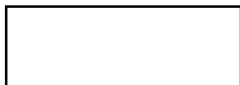
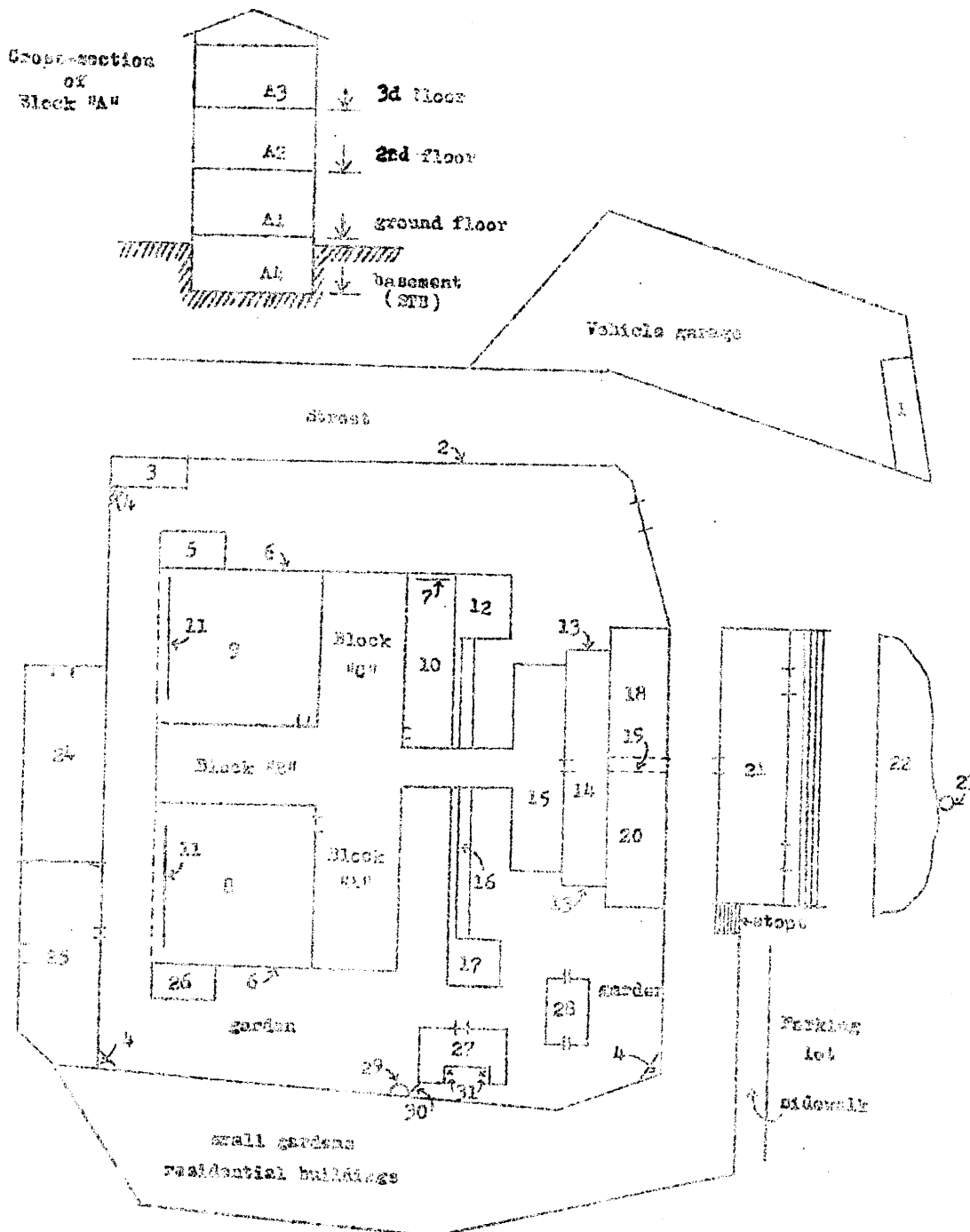


CENTRAL INTELLIGENCE AGENCY



"BANKHAC" mission in Prague



~~SECRET~~**CONFIDENTIAL**

25X1

CENTRAL INTELLIGENCE AGENCY

Legend to plan of Fankrac prison

P

1. Residential buildings.
2. Outer wall.
3. Storehouse.
4. Sentry box.
5. Bakery.
6. Inner wall.
7. Watchdog.
8. Courtyard "A".
9. Courtyard "B".
10. Courtyard "C".
11. Watchdogs.
12. Women's block.
13. Wall (thickness 12 feet).
14. Courtyard.
15. Offices of investigating judges, living quarters of prison guards, office of the SED, in basement, quarantine cells.
16. Store rooms.
17. Cookhouse.
18. Administrative offices.
19. Thoroughfare (passage).
20. Reception rooms.
21. Main building.
22. Park (flowerbeds).
23. Streetcar stop.
24. Garage.
25. Courtyard for supplies.
26. Workshop.
27. Infirmary, hospital.
28. Block II "A".
29. Guard box.
30. Wire fence.
31. Halls.

~~SECRET~~**CONFIDENTIAL**

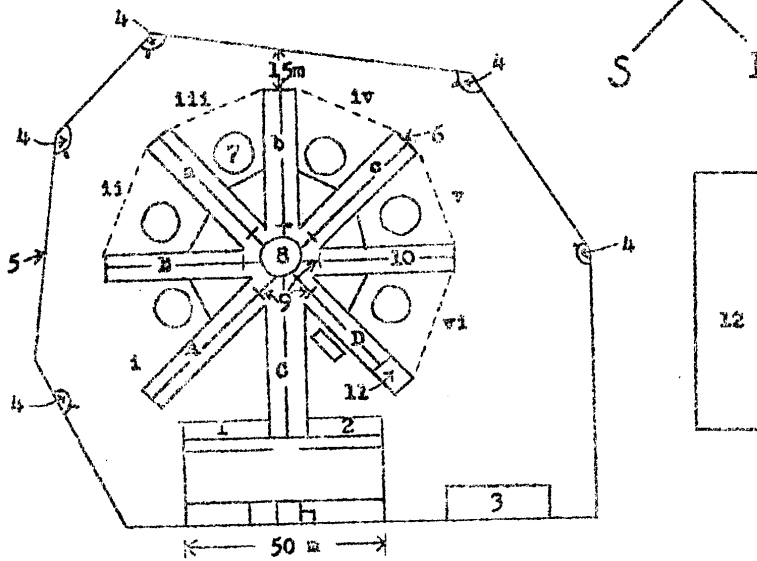
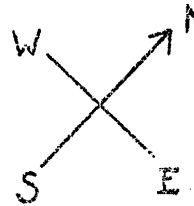
~~SECRET~~

~~CONFIDENTIAL~~

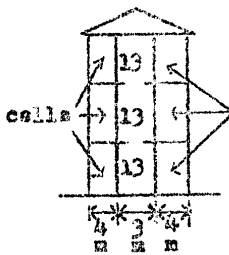
CENTRAL INTELLIGENCE AGENCY



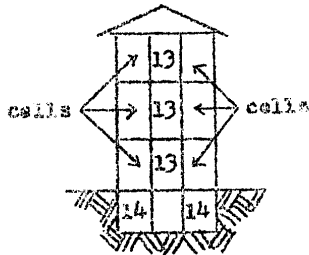
PROXY prison near Ploeg



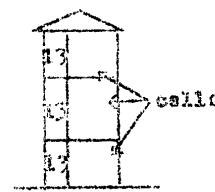
Cross section:



Block: a, c.

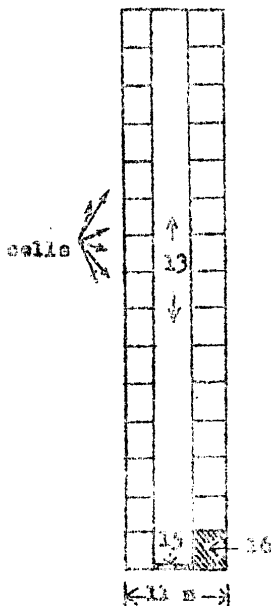


Block: b.



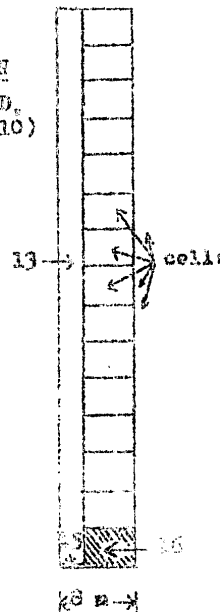
Blocks: A, B, D, and workshops (10).

Ground plan:



SOLENTARY CELLS
Blocks: a, b, c.

COMMON PRISON
Blocks: A, B, D,
& workshops (10)



~~CONFIDENTIAL~~

CONFIDENTIALPlan of "Barr" prison.

1. Administrative offices.
 2. Prison guards' living quarters.
 3. Garages.
 4. Guard boxes (with alarm installation).
 5. Outer wall, 15 feet high, two feet thick.
 6. Prison wall, 15 feet high, two feet thick.
 7. Circular concrete compounds for prisoners' daily exercise.
 8. Central rotunda.
 9. Iron grating with doors leading from central rotunda to passages of prison blocks A, B, C, A, B, D, and workshops (10). /see 15 on ground plan/.
 10. Prison block containing workshops.
 11. Last three cells on the ground floor of prison block "D", reserved for "prominent" prisoners; cells are entered from the passage through a special iron grating covered with canvas.
 12. Military barracks (artillery).
-
13. Passages.
 14. Underground dungeons (block "b" only).
 15. Iron grating with door, connecting the passage with the central rotunda. /see 9 above/.
 16. Guard-room.
-
- a)
 - b) Prison-blocks containing solitary cells ("samotki").
 - c)
 - A)
 - B) Prison-blocks containing common prison cells (mass prison) ("spolnocna").
 - D)
-
- 0 Main entry passage leading to central rotunda.
-
- 1 Watchdog #1.
 - ii, iii, iv, v, vi: Watchdogs #2 through #6.
Watchdogs are tied to overhead wires connecting the outer ends of prison-blocks at a height of 11 feet.

~~SECRET~~**CONFIDENTIAL**