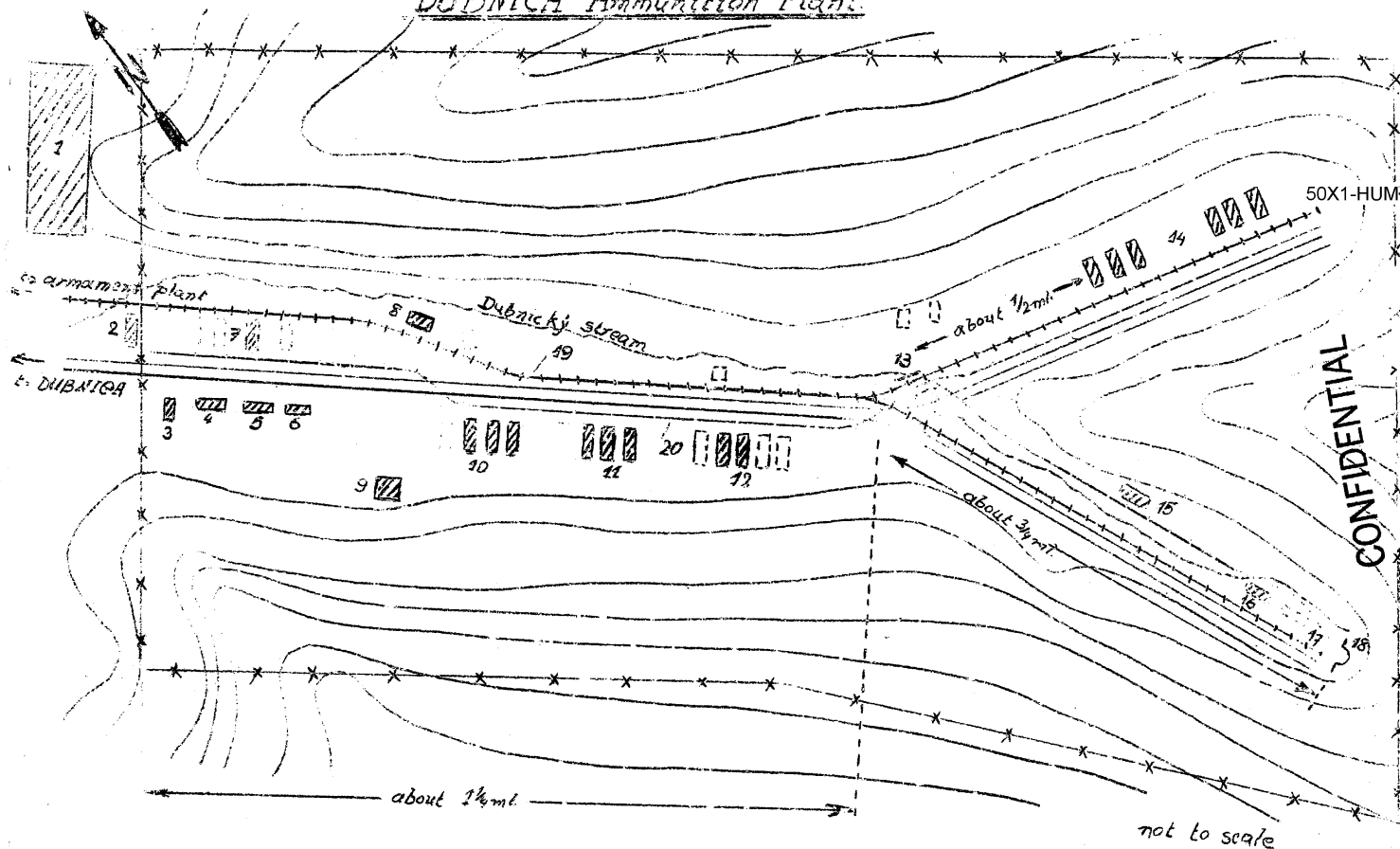


CONFIDENTIAL

SECRET  
CENTRAL INTELLIGENCE AGENCY

Sanitized Copy Approved for Release 2011/03/22 : CIA-RDP82-00457R006800770010-9

DUBNICA Ammunition Plant



Sanitized Copy Approved for Release 2011/03/22 : CIA-RDP82-00457R006800770010-9

~~SECRET~~

## CENTRAL INTELLIGENCE AGENCY

-2-

50X1-HUM

Legend:Dubnica Ammunition Plant (Valley Plant)

1. Workers' settlement. The apprentices were housed in single-story brick buildings. There were about 630 apprentices between 14 and 17 years old in the plant in October 1949. The workers' families were housed in brick structures while bachelor workers were housed in wooden buildings.
2. Messhall.
3. Gatekeepers' house.
4. Plant administration, infirmary and dispensary.
5. School for apprentices.
6. Dressing and washing rooms.
7. Workshops for apprentices.
8. Central heating station of the Valley Plant.
9. Transformer station.
10. Shops where shells were filled.
11. Shops where mines were filled.
12. Shops producing 150 mm shells.
13. Bridge across the Dubnický Brook.
14. Shops producing explosives (probably only doing filling work).
15. Shop producing shells.
16. Military guard station.
17. Artillery test firing range.
18. Underground ammunition dump (central dump).
19. Spur tracks leading past the main section of the Dubnica-Armament Plant to the Zilina-Bratislava railroad line.
20. Narrow gauge plant railroad line.

Buildings destroyed during the war and not yet reconstructed by October 1949. Wire fence surrounding the entire plant. All structures were built close to the mountain slopes. Between the individual buildings of the departments, identified above as 10, 11, 12, 14 and 15, were protective embankments which were as high as the buildings. The average size of the ammunition workshops was about 25x60 meters.

~~SECRET~~

CONFIDENTIAL