

INFORMATION REPORT

CD NO.

FLD 196

COUNTRY Czechoslovakia

DATE DISTR. 20 Mar 51

SUBJECT Tatra Works at Kolin
25X1A

CONFIDENTIAL

NO. OF PAGES 2

PLACE ACQUIRED [Redacted]
DATE OF INFO. [Redacted]

RETURN TO CIA LIBRARY

NO. OF ENCLS. 1
(LISTED BELOW)

25X1X

SUPPLEMENT TO REPORT NO.



1. The Tatra Works, National Corporation at Kolin, employ about 900 persons, of whom about 700 are men; 150 of the total force are clerks and 750 workers. Work is done in two shifts of eight hours each.
2. Leading personnel are:
 - a. Linecek, managing director.
 - b. Frantisek Hrdy, official in charge of security.
 - c. Marek, political official in charge of personnel.
 - d. Frantisek Spical, chairman of workers' council.
 - e. Vlastinil Kalva, commander of the workers' militia.
 All of them are members of the Communist Party.
3. Production at the Tatra Works consists of the following:
 - a. Railroad coaches; some parts such as brakes, dynamos and interior furnishings are supplied by other plants.
 - b. Open railroad freight cars capable of diverse loading.
 - c. Open railroad freight cars with six axles for transportation of weapons.
 - d. Tipping cars for metallurgical works.
 All of these cars have standard gauge.
4. Two to four freight cars of various types are produced weekly. The production of heavy open railroad freight cars with six axles was started in February 1950 and 30 cars have been completed. Machining of semi-finished products such as axles and wheels is also done at the works.

CLASSIFICATION

SECRET

STATE	<input checked="" type="checkbox"/>	NAVY	<input checked="" type="checkbox"/>	NSRB	<input checked="" type="checkbox"/>	DISTRIBUTION			
ARMY	<input checked="" type="checkbox"/>	AIR	<input checked="" type="checkbox"/>	FBI					

CONFIDENTIAL

This document is hereby regraded to CONFIDENTIAL in accordance with the letter of 18 October 1978 from the Director of Central Intelligence to the Archivist of the United States.

Approved For Release 2000/05/18 : CIA-RDP82-00457R007100090011-6

Next Review Date: 2008

Document No. [Redacted]

No Change in Class.

Declassified

Class. Changed To: [Redacted]

Auth.: [Redacted]

Date: [Redacted]

VOID

CENTRAL INTELLIGENCE AGENCY

25X1A

-2-

CONFIDENTIAL

5. Tatra has the following machinery:

- a. Lathes: most of them are of an older German type, and the largest diameter is 3.5-4 m.
- b. Turnery: 16 milling machines
 - 4 wing-drilling machines
 - 4 planing machines
- c. Forge: 8 electric hammers
 - 4 gas furnaces
- d. Assembly shop I: 5 travelling cranes
 - 1 large electric shears
- e. Assembly shop II: 2 travelling cranes

6. A bottleneck in production has been caused by the lack of iron bars and of welding machines. The vulnerable point in the works is the transformer.

7. About 30 percent of production is used domestically. The remainder is exported as follows: railroad coaches to Turkey; open railroad freight cars to Western Germany.

8. Labor morale is poor. Workers are dissatisfied with the method of computing wages and with low earnings. There is considerable absenteeism but no great variation in the number of workers because they are not permitted to transfer to another factory. Absenteeism results in severe punishment, sometimes assignment to a forced labor camp. An economy system like that used at Bata has been instituted.

Attachment: Sketch showing installations at the Tatra Works at Kolin.

Legend to attachment:

- | | |
|----------------------------|---|
| 1. Villa | 8. Joiner's shop |
| 2. Administration building | 9. Offices and arsenal |
| 3. Offices | 10. a. Compressors |
| 4. Gate | b. Boilerhouse |
| 5. Spray boxes (sic) | 11. a. Smithy |
| 6. Store of paints | b. 3-4 electric hammers |
| 7. a. Assembly shop II | 12. Turning shop |
| b. Varnishing shop | 13. Main store |
| c. Assembly shop I | 14. Varnishing shop |
| d. Locksmith's shop | 15. Villa of director |
| e. Lathe shop | 16. Garages |
| f. Transformer | 17-19. Stores |
| g. Tool shop | A. Kolin Refinery of Mineral Oils, National Corporation |
| h. Maintenance | B. Kolin Plant for Coffee Substitutes |

CONFIDENTIAL

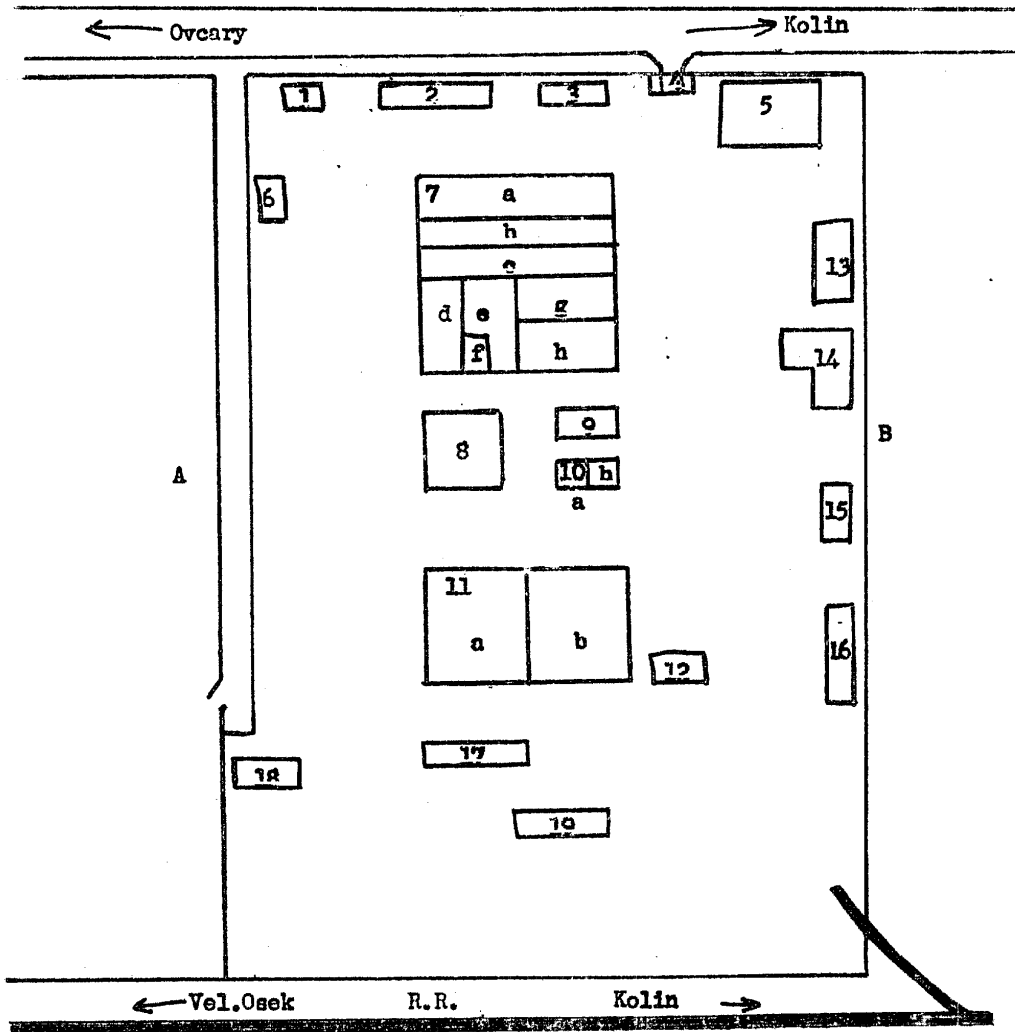
~~CONFIDENTIAL~~

SECRET

25X1A

CENTRAL INTELLIGENCE AGENCY
ATTACHMENT I

Works at Kolin



~~SECRET~~

~~CONFIDENTIAL~~