

INTELLOFAX 29

CENTRAL INTELLIGENCE AGENCY 25X1 REPORT [redacted]

INFORMATION REPORT

CD NO.

COUNTRY USSR (Moscow Oblast)

DATE DISTR. 27 February 1951

SUBJECT Optical Plant No 393 at Krasnogorsk-Pavshino

NO. OF PAGES 1

25X1

PLACE ACQUIRED [redacted]

NO. OF ENCLS. 3
(LISTED BELOW)

DATE OF INFO. [redacted]

25X1

SUPPLEMENT TO REPORT NO.

[redacted]

THIS DOCUMENT CONTAINS INFORMATION AFFECTING THE NATIONAL DEFENSE OF THE UNITED STATES, WITHIN THE MEANING OF TITLE 18, SECTIONS 793 AND 794, OF THE U. S. CODE, AS AMENDED. ITS TRANSMISSION OR REVELATION OF ITS CONTENTS TO OR RECEIPT BY AN UNAUTHORIZED PERSON IS PROHIBITED BY LAW. THE REPRODUCTION OF THIS FORM IS PROHIBITED.

THIS IS UNEVALUATED INFORMATION

[redacted]

25X1

- Optical Plant No 393 is located in Krasnogorsk (55-51N, 37-19E). Ten new workshops for this plant were under construction during the period of observation. (1)
- The production of the plant included various types of lenses and prisms, field glasses, panoramic sights and battery commander's telescopes in addition to aircraft sights and cameras. According to engineer Brauer, the aircraft sights and cameras were to be installed in modern jet aircraft. (2) Photographic plates and films were also manufactured at the plant. One source claimed to have observed the production of three items which he could not identify. (3)
- Production figures were not known. Power was supplied via a high-tension line coming from the direction of Moscow.

25X1

- Until mid-1949, the plant employed 1,500 to 1,700 workers. [redacted] work was done in two shifts after August 1949. The foundry department worked three shifts. After August 1949, 1,500 employees worked in the day shift and approximately 1,100 to 1,300 in the night shift. (4)
- The presence at the plant of German experts of the Zeiss Firm in Jena was confirmed. The names of engineers Wilhelm Schneider, who had come from Moscow, and Brauer (fnu) were mentioned.

25X1

[redacted] Comments.

- This considerable enlargement of the plant is reported for the first time. It is not believed that the construction work mentioned can have been started prior to 1949.
 - This statement may refer to bomb sights for jet aircraft and aircraft cameras developed at the Zeiss plant. These cameras were equipped with a special high-speed film transport mechanism (Schnellschriftschaltwerk).
 - For sketches of production items noticed by one source only, see Annexes 1-3. The purpose of these items could not be determined. It is possible that these items were cases for aircraft parachute flares.
 - The data on the number of shifts worked and the number of employees is believed to be credible.
- 3 Annexes: 3 - sketches on ditto.

25X1

CLASSIFICATION		CONFIDENTIAL/CONTROL		[redacted]	
STATE	<input checked="" type="checkbox"/>	NAVY	<input checked="" type="checkbox"/>	NSRB	
ARMY	<input checked="" type="checkbox"/>	AIR	<input checked="" type="checkbox"/>	FBI	
DISTRIBUTION					

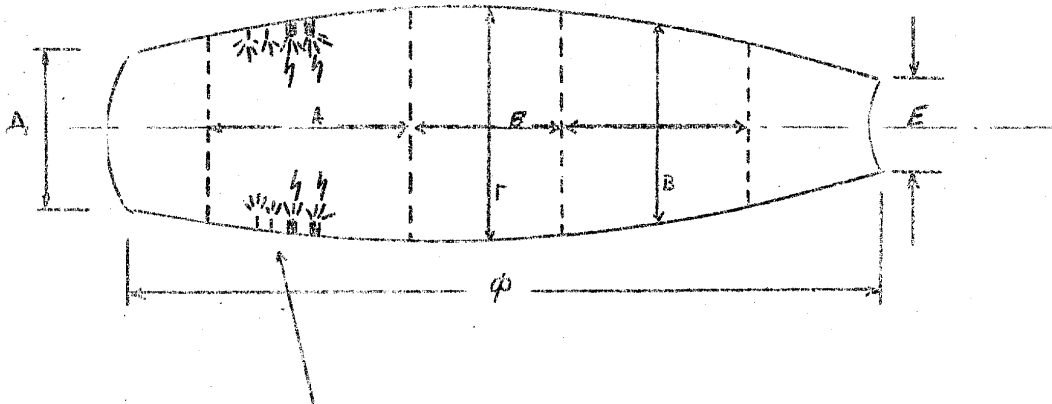
Document No. 3
 No Change in Class.
 Declassified
 Class. Changed To: TS S C 25X1
 Auth: HR 70-2
 Date: 1-14-78
 [redacted]

CONFIDENTIAL/CONTROL [REDACTED]

25X1

Annex I

Production Item Observed in Optical Plant No 391 in Krasnogorsk



Four bores located closely together; the first two bores had a diameter of 7-~~mm~~ to 8-~~mm~~ the other two bores a diameter of 30-~~mm~~ to 40 ~~mm~~

25X1

CONFIDENTIAL/CONTROL [REDACTED]

Production Item Seen at the Foundry of Optical Plant No 393

tubular line, 8 mm in diameter

2 threaded bores, 7-8 mm in diameter, 2 threaded bores, 40-50 mm in diameter

Wire screen fastened by wooden wedges

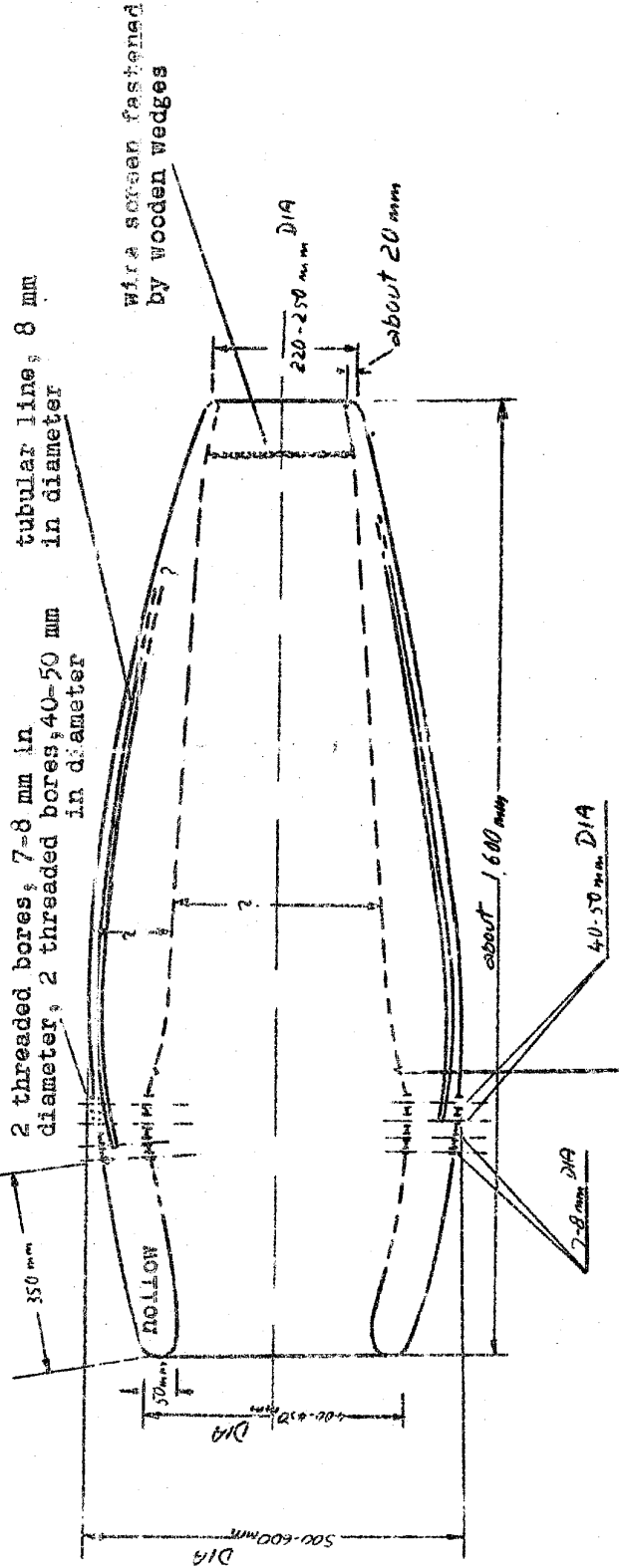
220-230 mm DIA

about 20 mm

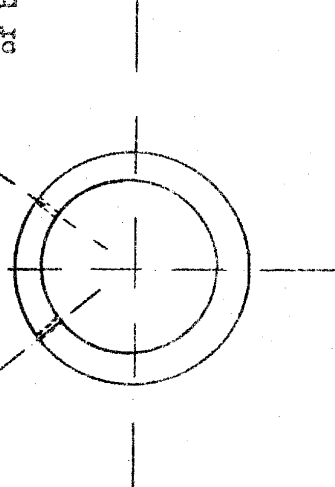
about 1,600 mm

40-50 mm DIA

7-8 mm DIA



front view showing arrangement of bores

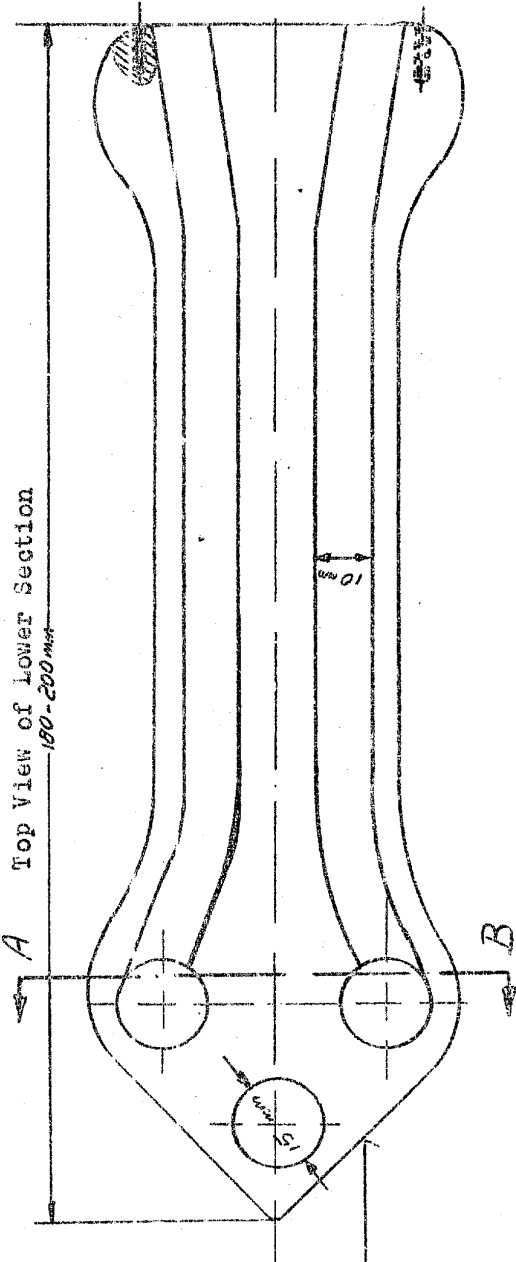


Reinforced section begins aft of bores. At this point it looks like a ring.

CENTRAL INTELLIGENCE AGENCY

Annex 3

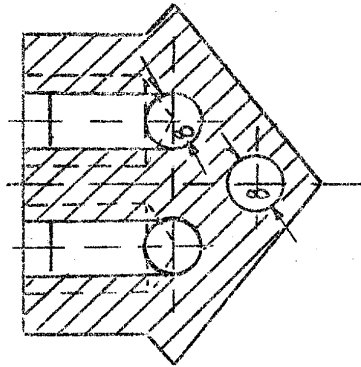
Sketch of Product machined in the Milling Shop of Optical Plant No 393



bores 15 mm deep

This section was ground off and measured with a slide gauge

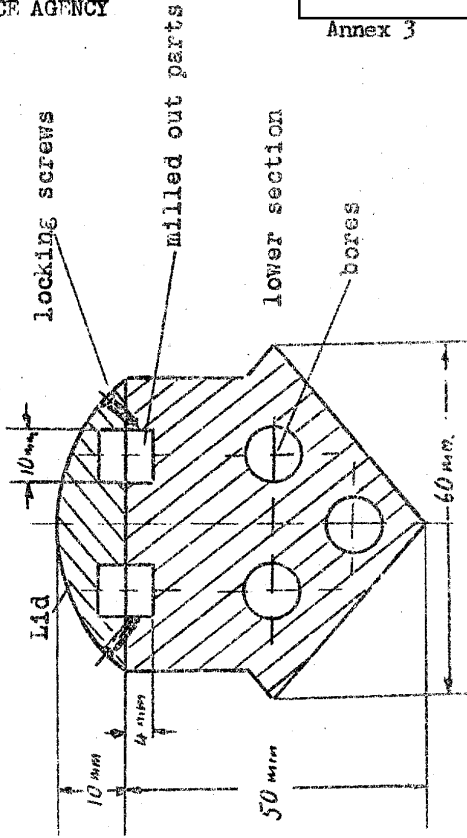
Cross Section of Lower Section



See Fig. A-B

scale about 1:1

Cross Section of Work Piece (middle Section with Lid)



25X1