

C 25X1A
5593

CLASSIFICATION CONFIDENTIAL/

SECURITY INFORMATION
CENTRAL INTELLIGENCE AGENCY

INFORMATION REPORT

REPORT NO. []

CD NO. []

COUNTRY USSR(Ukrainian SSR)

DATE DISTR. 8 February 1952

SUBJECT Stalin Machine Factory at Kramatorsk

NO. OF PAGES 2

25X1A

PLACE ACQUIRED []

NO. OF ENCLS. 2@
(LISTED BELOW)

DATE OF INFO. []

SUPPLEMENT TO REPORT NO. []

25X1X
25X1

DESTROY AFTER USE



1. Location

25X1

Northeast of Kramatorsk (37°35' N/48°43' E), Ukrainian SSR, east of the small Torets river.

2. Plant installations

Soviets said that the plant was constructed from 1930 to 1932 and was 80 percent damaged during the war. Reconstructed according to the old plans the plant resumed full operation in May 1949. Production was constantly increasing. For plant layout see Annex 2.

3. Work force

More than 10,000 laborers, 30 percent women, working in three shifts.

4. Production

Machine parts and accessories, except electric motors.

25X1A

[] comment:

a. This is the second report on the Stalin Machine Plant. The previous report * which, for the lack of comparable records, has not been commented on, can now be rated with attached pre-war aerial photograph (Annex 1) and attached sketch (Annex 2).

CLASSIFICATION CONFIDENTIAL/

25X1

STATE	NAVY	NSRB	DISTRIBUTION			
ARMY #3 x	AIR #2 x	FBI				

CENTRAL INTELLIGENCE AGENCY

25X1A

comparison shows that previous data * approach facts.

b. This report confirms previous information * on the main plant buildings as to location and therefore is considered valuable. Previous sketch * and attached photograph strongly agree on the layout of those buildings which can be identified on the photograph. It is thus concluded that the heavily damaged plant was actually reconstructed in its original shape.

- 2 annexes:
- (1) Aerial photograph of the Stalin Machine Factory
 - (2) Sketch of the Stalin Machine Factory.

25X1A

CONFIDENTIAL

25X1

CENTRAL INTELLIGENCE AGENCY

25X1A

Legend to Annex 2

- 1 Administration
- 2 Assembly
- 3a Lathe shop for shells
- 3b Laboratory
- 4a Laboratory
- 4b Main administration No 2
- 5 Model making carpenter shop
- 6 Lathe shop
- 7a Lathe shop
- 7b Chemical laboratory
- 8 Forge with light and heavy steam hammers
- 9 Pressing plant with one 10-ton press, two 5-ton presses and several annealing furnaces
- 10 Main store
- 11 Power plant
- 12 Foundry
- 13 Open hearth plant with several open-hearth furnaces
- 14 Stores of open-hearth plant
- 15 New buildings
- 16 Coal dump
- 17 Workshops
- 18 Assembly for structural bridge parts and towers
- 19 Main administration No 1
- 20 Railroad installations
- 21 Iron dump
- 22 Slag-stone plant
- 23 Cement stores
- 24 Transformer station

CONFIDENTIAL-

25X1

"Stalin"

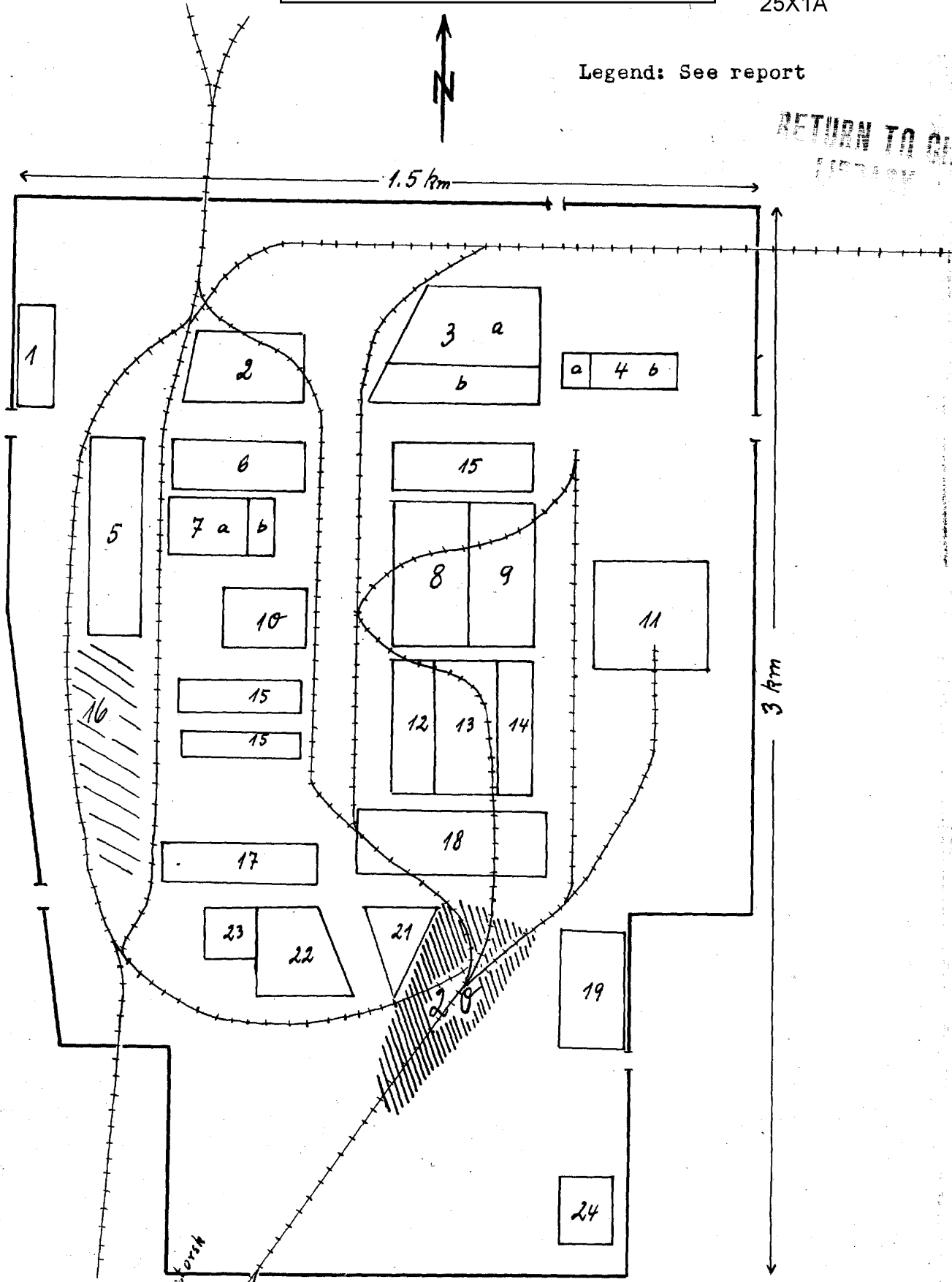
25X1

5593

25X1A

Legend: See report

RETURN TO CIA
LIBRARY



25X1

CENTRAL INTELLIGENCE AGENCY

25X1A

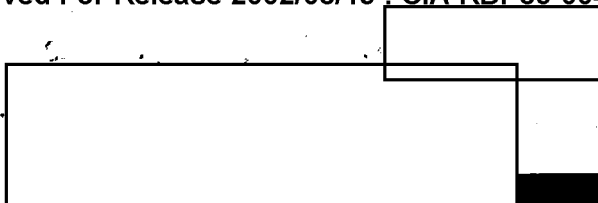
Legend to Annex 2

- 1 Administration
- 2 Assembly
- 3a Lathe shop for shells
- 3b Laboratory
- 4a Laboratory
- 4b Main administration No 2
- 5 Model making carpenter shop
- 6 Lathe shop
- 7a Lathe shop
- 7b Chemical laboratory
- 8 Forge with light and heavy steam hammers
- 9 Pressing plant with one 10-ton press, two 5-ton presses and several annealing furnaces
- 10 Main store
- 11 Power plant
- 12 Foundry
- 13 Open hearth plant with several open-hearth furnaces
- 14 Stores of open-hearth plant
- 15 New buildings
- 16 Coal dump
- 17 Workshops
- 18 Assembly for structural bridge parts and towers
- 19 Main administration No 1
- 20 Railroad installations
- 21 Iron dump
- 22 Slag-stone plant
- 23 Cement stores
- 24 Transformer station

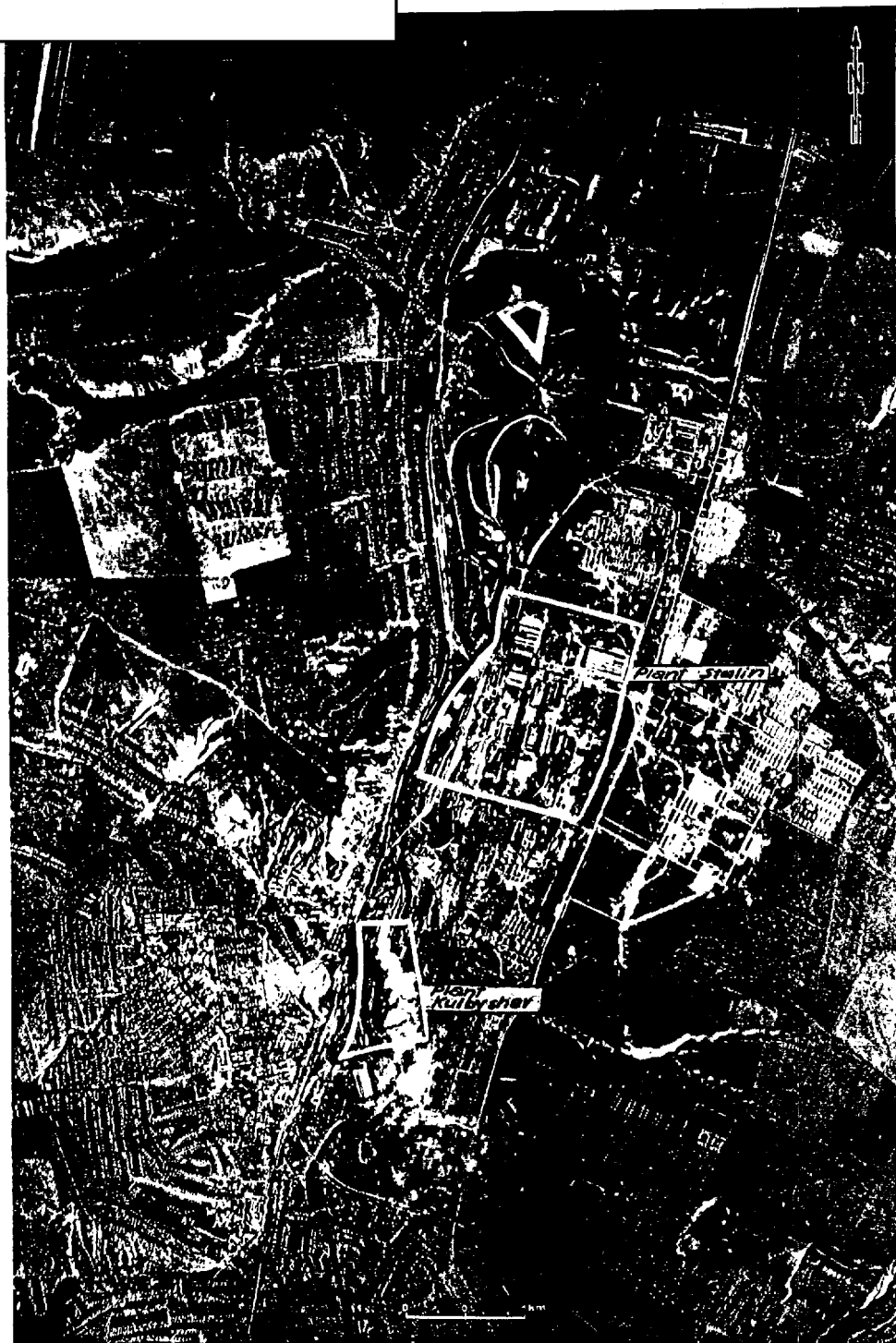
CONFIDENTIAL

25X1

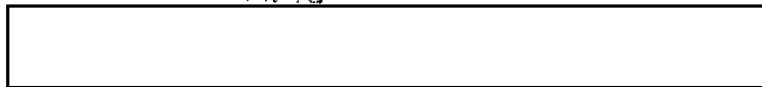
25X1



25X1A



CONFIDENTIAL



25X1