

25X1

Approved For Release 2004/05/12 : CIA-RDP83-00415R013200030006-5

CLASSIFICATION

**SECRET**

CENTRAL INTELLIGENCE AGENCY

25X1 REPORT NO



FORM NO. 51.61  
MAY 1952

INTELEGRAM 29

# INFORMATION REPORT

CD NO.

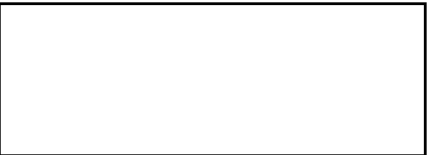
25X1

COUNTRY **Poland**

DATE DISTR. **12 November 1952**

SUBJECT **Sketches of Rokita Factory**

NO. OF PAGES **1**



25X1

25X1

25X1

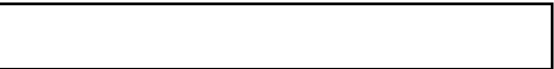
NO. OF ENCLS. **1 (2 map sketches)**  
(LISTED BELOW)

SUPPLEMENT TO  
REPORT NO.



THIS DOCUMENT CONTAINS INFORMATION AFFECTING THE NATIONAL DEFENSE OF THE UNITED STATES WITHIN THE MEANING OF THE ESPIONAGE ACT 50 U.S.C. 31 AND 32 AS AMENDED. ITS TRANSMISSION OR THE REVELATION OF ITS CONTENTS IN ANY MANNER TO AN UNAUTHORIZED PERSON IS PROHIBITED BY LAW. REPRODUCTION OF THIS FORM IS PROHIBITED.

THIS IS UNEVALUATED INFORMATION



25X1

The attached two map sketches of the Rokita factory are forwarded to your office for retention.

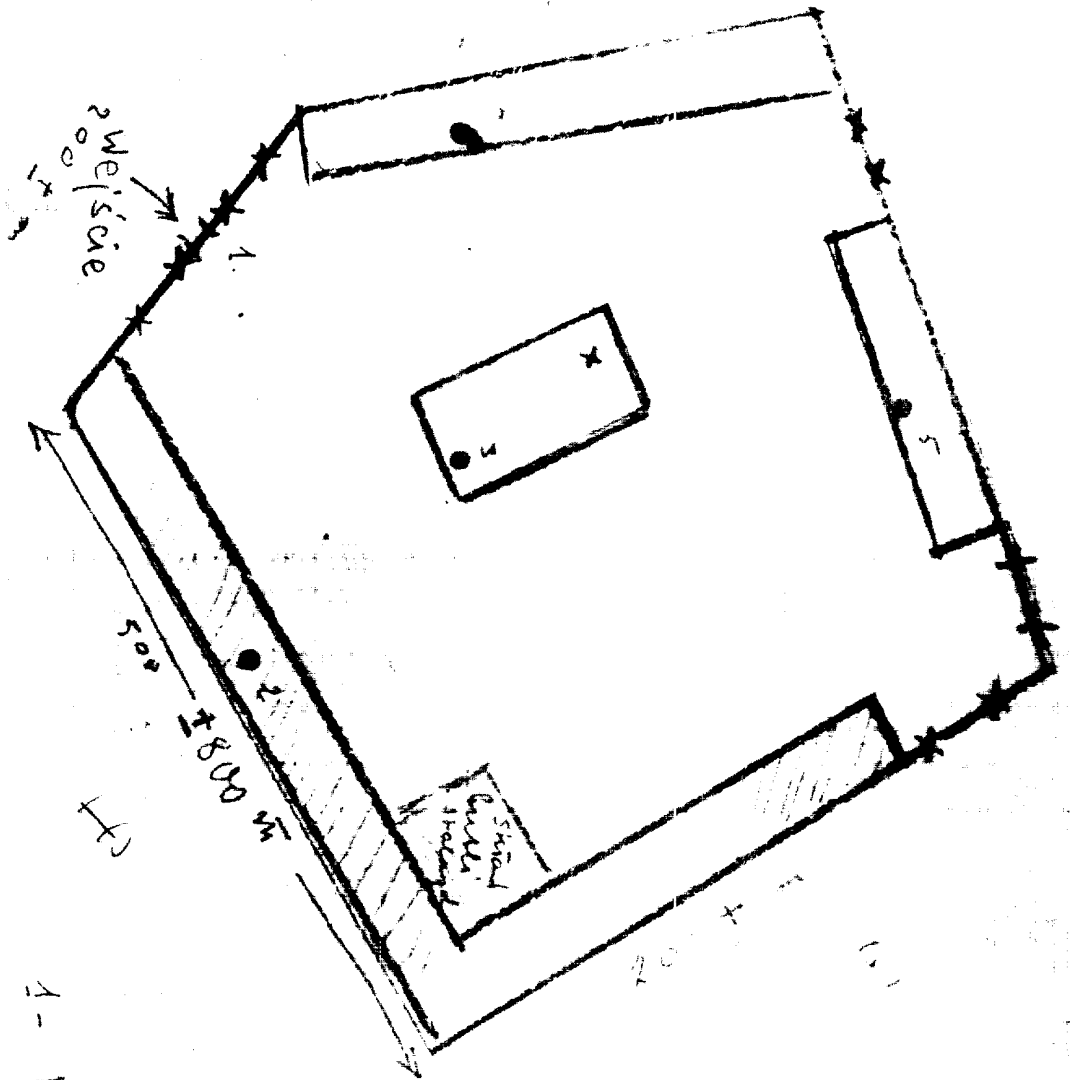
**DEC 18 1952**  
DEC 18 1952  
DEC 18 1952  
DEC 18 1952  
DEC 18 1952  
DEC 18 1952  
DEC 18 1952  
DEC 18 1952  
DEC 18 1952  
DEC 18 1952

THIS DOCUMENT HAS AN ENCLOSURE ATTACHED  
DO NOT DETACH

DEC 19 1952  
OSI/IC  
DEC 31 1952  
OSI/IC

**EXPLOITED BY IN**

SECRET



Handwritten notes on the left margin, partially obscured by a dark vertical band:

- remains to be seen...
- from the...
- of the...

Handwritten notes at the bottom left:

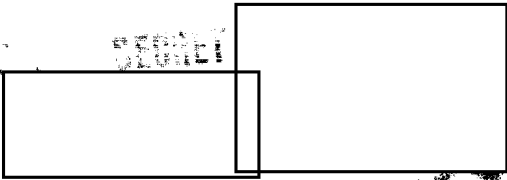
- 1 - Weisäe q'one. -
- Structure known as the K.P. with rd 2-4 ends
- 2-5 - Working fabrications by...
- X - Building description - pro...
- many days from the area in 1950s etc.
- Three buildings - 1st, 2nd, 3rd
- Using Komplex buildings above...

SECRET

21e11

25X1

25X1



25X1

WINDTUNNEL

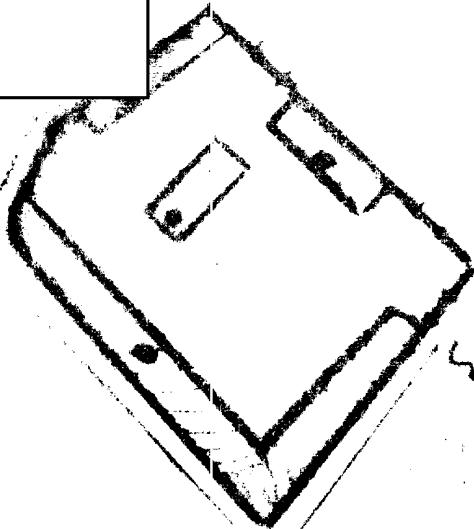
m  
Breeze

Divs

800 m

BRIDGE  
Breeze Tunnel

Open



SECRET



25X1

"C"

25X1