

| | | |
|--|--|---------------------|
| RESTRICTED CONFIDENTIAL SECRET ROUTING AND CONTROL RECORD | | |
| DO NOT DETACH FROM 'ON LOAN' DOCUMENTS | | |
| <u>3 Nov 53</u> DATE | | |
| TO: CIA Library | | |
| ATTN: | | |
| BUILDING | M | ROOM NO. |
| TITLE | | |
| Two Drawings for [REDACTED] | | |
| Drawings are UNCLASSIFIED when separated from this report. | | |
| [REDACTED] | | |
| REMARKS | | |
| | | |
| <input checked="" type="checkbox"/> RETAIN <input type="checkbox"/> ON LOAN | | |
| DOCUMENT(S) | DOCUMENT(S) MUST BE RE [REDACTED] | |
| FOR RETENSION | BY (DEADLINE) | |
| BY ADDRESSEE | | |
| FROM: | [REDACTED] | BRANCH |
| | | GY STAFF [REDACTED] |
| BUILDING | ROOM NO. | EXTENSION |
| South | 252 | 2576 |

25X1A

25X1A

25X1A

25X1A

25X9

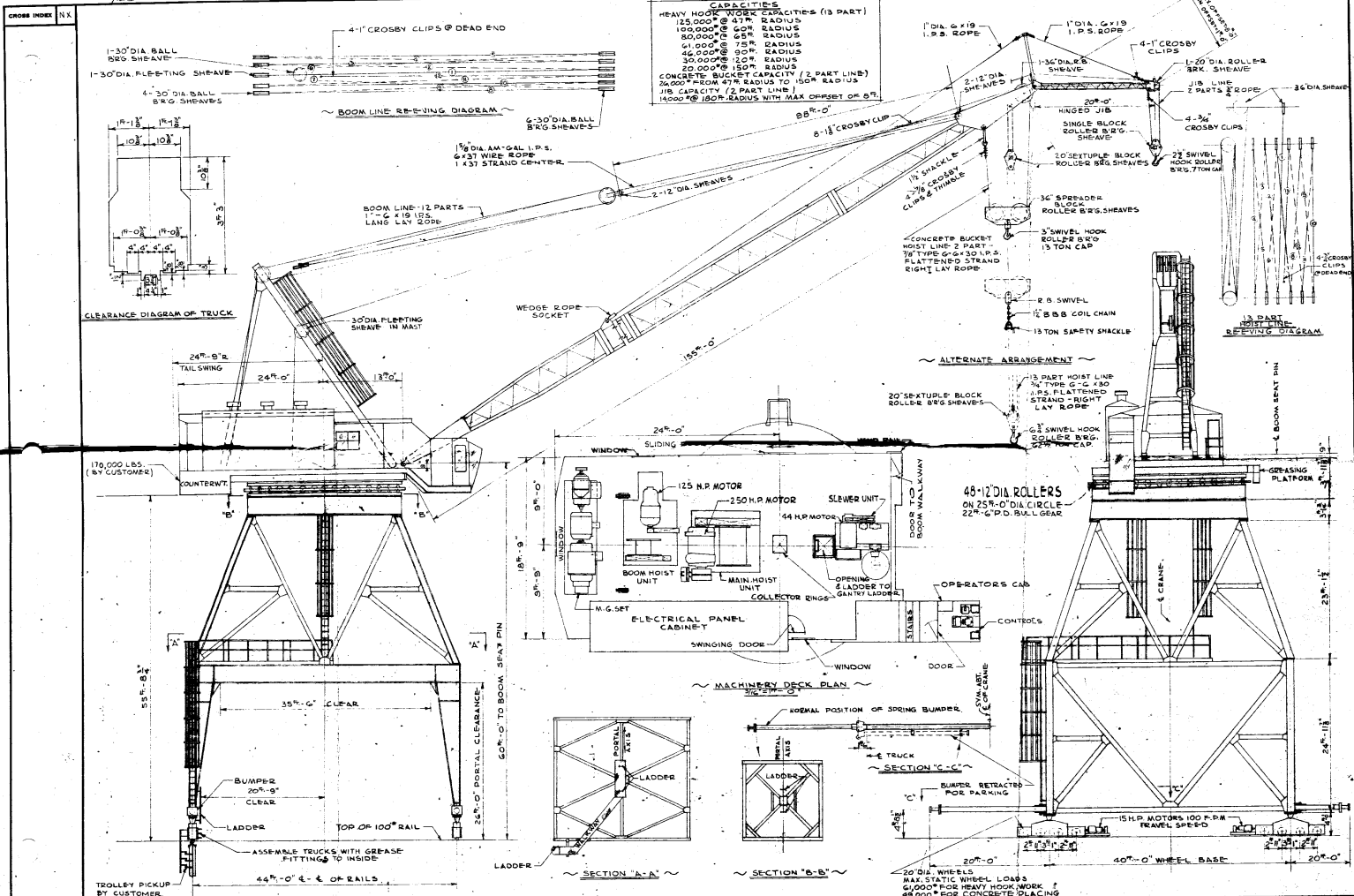
GENERAL ASSEMBLY
R-25 REVOLVER

65685
C 88501

Approved For Release 1999/09/10 : CIA-RDP83-00423R001100810002-8

PENILED J.S.
TRACED SCALE 1/8" = 1'-0"
CHECKED R.E. DATE 10-12-53

CAPACITIES
HEAVY HOOK WOSEK CAPACITIES (13 PART)
125,000 @ 43" RADIUS
100,000 @ 60" RADIUS
80,000 @ 68" RADIUS
61,000 @ 75" RADIUS
46,000 @ 90" RADIUS
30,000 @ 120" RADIUS
20,000 @ 150" RADIUS
CONCRETE BUCKET CAPACITY (2 PART LINE)
26,000 @ 47" RADIUS TO 150" RADIUS
115 CAPACITY (2 PART LINE)
14,000 @ 180" RADIUS WITH MAX OFFSET OF 8 1/2"



| | | | | | | | | | | | | | | | | | | | | |
|----|--|---|---|---|---|--|--|--|--|--|--|--|--|--|--|--|--|--|--|--|
| 10 | | 8 | 6 | 4 | 2 | | | | | | | | | | | | | | | |
| 9 | | 7 | 5 | 3 | 1 | | | | | | | | | | | | | | | |
| 8 | | | | | | | | | | | | | | | | | | | | |

Approved For Release 1999/09/10 : CIA-RDP83-00423R001100810002-8

