

258

5 April 1954

(Submit to HQ-00/C in triplicate with process sheet attached)

DIST: ORIG-GRAPHICS; DUPL-CASE FILE; TRIPL-SOURCE FILE; QUAD-FO RECORD

GIFT

LOAN

AREA

Chuquicamata, Chile

SUBJECT

Slides of the Chuquicamata Sulphide Plant, Chile

NUMBER OF ITEMS AND CATEGORY (Still photographs, negatives, or slides)

14 Stereo Slides

DATE OF EXPOSURE

[REDACTED]

25X1A

CHECK CLASSIFICATION OF PHOTOGRAPHS WHEN SEPARATED FROM THIS FORM. (The classification need not be the same.)

U. S. OFFICIALS ONLY

CIA OFFICIALS ONLY

SECRET

~~CONFIDENTIAL~~

RESTRICTED

UNCLASSIFIED

BRIEF SOURCE DESCRIPTION

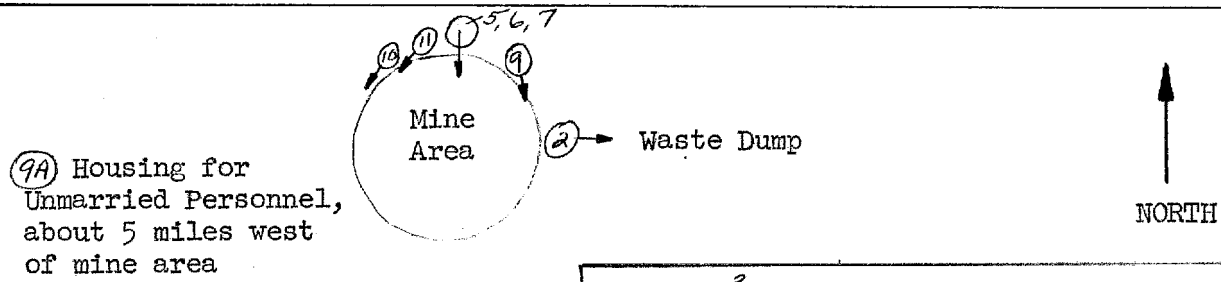
[REDACTED]

25X1X6

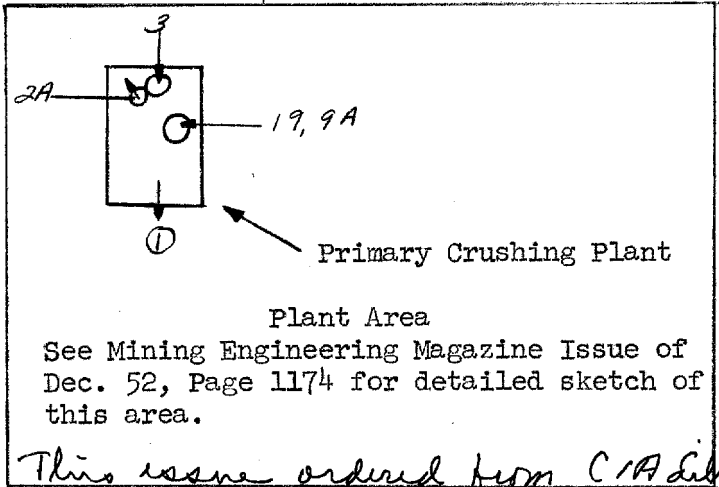
IS SOURCE APT TO MAKE ADDITIONAL PHOTOGRAPHIC MATERIAL AVAILABLE? Yes No

MAY SOURCE'S NAME BE REVEALED TO GRAPHICS REGISTER, OCD, IF REQUIRED? Yes No

DESCRIPTION OF MATERIAL



④ →



*Accessioned 10
 CIA-193384-193393*

See Mining Engineering Magazine Issue of Dec. 52, Page 1174 for detailed sketch of this area.

*This issue ordered from CIA Library
 9 April 54*

"CHUQUICAMATA SULPHIDE PLANT"

25X1A2g

FOR HEADQUARTERS USE ONLY

GR CONTROL NO.	CASE NO.	DATE FORWARDED TO GR BY GMP	25X1A9a
	X	7 April 54	
		RETURN DEADLINE (IF LOAN)	
		30 April 54	

CHILE ANTOFAGASTA CHUQUICAMATA
22 19 S 68 53 W COPPER MINE NEAR PRIMARY

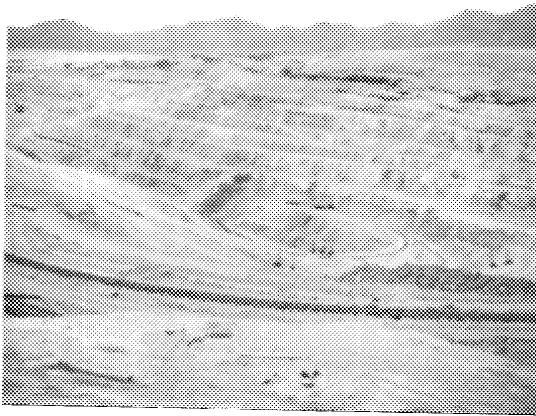
SULPHIDE CRUSHING PLANT. PART 1 OF 2 PART
PANORAMA (SEE CIA 193393). 1954.

CIA 193392



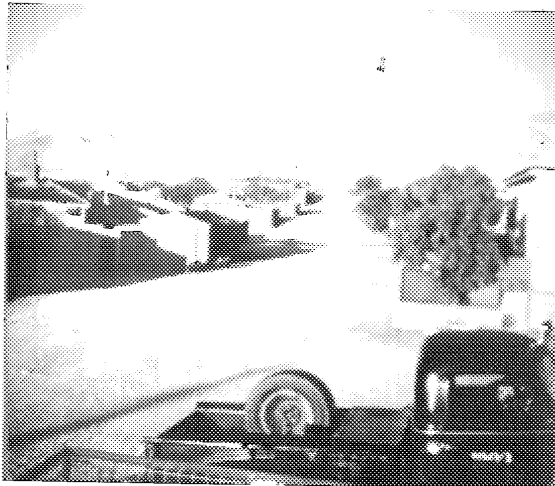
CHILE ANTOFAGASTA CHUQUICAMATA
22 19 S 68 53 W COPPER MINE NEAR PRIMARY
SULPHIDE CRUSHING PLANT. PART 2 OF 2 PART
PANORAMA (SEE CIA 193392). 1954.

CIA 193393



CHILE ANTOFAGASTA CHUQUICAMATA
22 19 S 68 53 W HOUSING FOR UNMARRIED
WORKERS AT SULPHIDE PLANT. 1954.

CIA 193391



CIA 193386



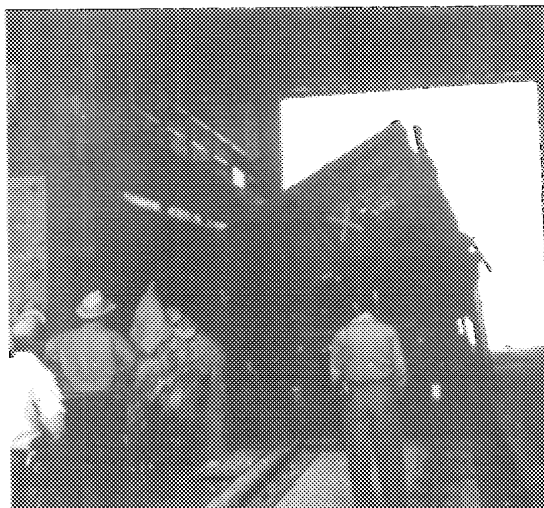
CHILE ANTOFAGASTA CHUQUICAMATA
22 19 S 68 53 W COPPER MINING AREA NEAR
SULPHIDE PLANT. 1954.

CIA 193387



CHILE ANTOFAGASTA CHUQUICAMATA
22 19 S 68 53 W SULPHIDE PLANT. PRIMARY
CRUSHING PLANT FOR COPPER ORE. 1954.

CIA 193388



CHILE ANTOFAGASTA CHUQUICAMATA
22 19 S 68 53 W COPPER MINING AREA NEAR
SULPHIDE PLANT. 1954.

CIA 193389



CHILE ANTOFAGASTA CHUQUICAMATA
22 19 S 68 53 W WASTE DUMP FOR COPPER MINE
NORTH OF PRIMARY SULPHIDE CRUSHING PLANT.
1954.

CIA 193390



CHILE ANTOFAGASTA CHUQUICAMATA
22 19 S 68 53 W LOOKING SOUTH FROM PRIMARY
SULPHIDE CRUSHING PLANT FOR COPPER ORE. 1954.
CIA 193384



CHILE ANTOFAGASTA CHUQUICAMATA
22 19 S 68 53 W LOOKING EAST TOWARD PRI-
MARY SULPHIDE CRUSHING PLANT FOR COPPER ORE.
1954. CIA 193385

