

25X1A2g

25X1A2g

PRESENTATION FORM FOR GRAPHIC MATERIAL

DATE

23 August 1954

(Submit to HQ-00/C in triplicate with process sheet attached)

DIST ORIG-GRAPHICS; DUPL-CASE FILE; TRIPL-SOURCE FILE; QUAD-FO RECORD

GIFT

LOAN

AREA

China

SUBJECT

Various stills taken in Communist China

NUMBER OF ITEMS AND CATEGORY (Still photographs, negatives, or slides)

DATE OF EXPOSURE

25X1X6

CHECK CLASSIFICATION OF PHOTOGRAPHS WHEN SEPARATED FROM THIS FORM. (The classification need not be the same.)

U. S. OFFICIALS ONLY

CIA OFFICIALS ONLY

SECRET

CONFIDENTIAL

RESTRICTED

UNCLASSIFIED

BRIEF SOURCE DESCRIPTION

IS SOURCE APT TO MAKE ADDITIONAL PHOTOGRAPHIC MATERIAL AVAILABLE? Yes No

MAY SOURCE'S NAME BE REVEALED TO GRAPHICS REGISTER, OCD, IF REQUIRED? Yes No

DESCRIPTION OF MATERIAL

(Ancient Irrigation Works Enters a New Phase - The Tuchiangyen Dam in Western Szechuan Province): Captions as follows:

50334 - In Pai Sha Hsiang of Kuan County, western Szechuan Province, the Minkiang River divides into two - an inner (right) and an outer (left). The Tuchiangyen Dam was built just starting from the watershed of the inner and outer river. CIA-138791

50335 - The newly-built lock of the stone dyke in Pi County, southeast to Kuan County. CIA-138790

50336 - Irrigation canals - More than 200,000 hectares of the West Szechuan Plain is crisscrossed with canals led by the Tuchiangyen irrigation system. CIA-138792

50341 - The Tuchiangyen Dam is not only famous for its irrigation system, but is also a picturesque place. On Sundays and holidays, many people visit the dam. Photo shows Young Pioneers of the No. 1 Middle School of Kuan County sketching by the Anlansochiao (a bamboo bridge) of the Tuchiangyen Dam. CIA-138783

(The Peaceful Construction of the Democratic People's Republic of Korea.): Captions as follows:

51205 - Workers of the Hwanghae Iron Smelting Plant in North Korea repair an ore jar. CIA-138788

51206 - The 12-ton crane of the Hwanghae Iron Smelting Plant in North Korea has started operation again after rapid restoration. CIA-138789

51208 - The Bessemer converter of the copper smelting shop of the Nampo Iron and Steel Works in North Korea has started operation again. CIA-138782

51210 - Workers of the Pyongyang Farm Machinery Station in North Korea hoeing in the kaoliang field. [continued on next page] CIA-138781

25X1A2g

FOR HEADQUARTERS USE ONLY

OO A NO

CASE NO.

DATE FORWARDED TO GR BY GMP

GR CONTROL NO.

RETURN DEADLINE (IF LOAN)

26 August

NITRATE FILM EXPLOSIVE-SHIP BY EXPRESS UNDER SPECIAL ARRANGEMENTS

FORM NO. 57-27 FEB 1953 Approved For Release 1999/09/10 : CIA-RDP83-00423R001600510001-7

CIA-138781-138782

[continued]

51214 - The newly restored building of the No. 14 People's School in Pyongyang, North Korea. *CIA-138784*

51215 - The Western Pyongyang Stadium in North Korea is being built. A large number of students of the Kim Il Sung University take part in the construction of this stadium. *CIA-138787*

49637 - A Korean worker at work in the silk reeling shop of the Pyongyang Textile Mill, the biggest of its kind in North Korea. The mill has started operation again after rapid restoration. *CIA-138786*

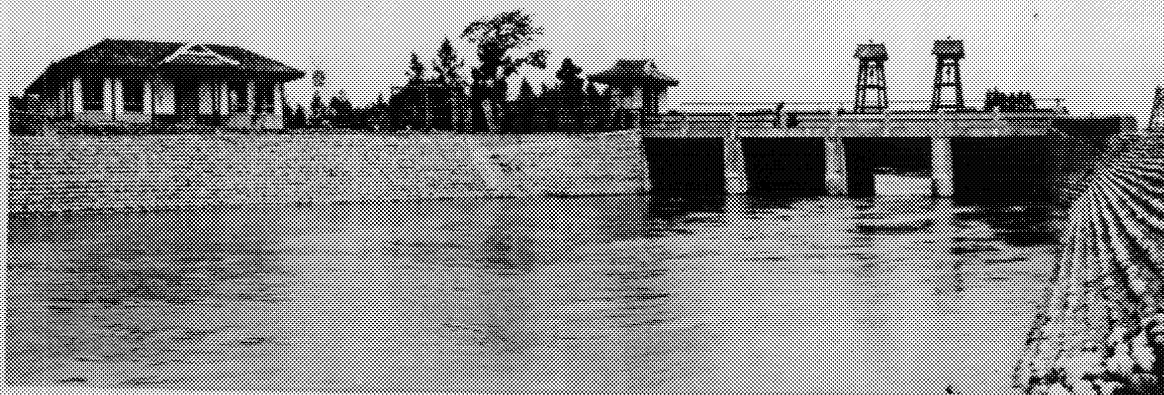
(Peking People Held a Rally Hailing Indo-Chinese Truce): Caption as follows:

47905 - A rally hailing Indo-Chinese Truce was held and a resolution greeting the cessation of hostilities in Indo-China was adopted by the Peking people on July 23, in Peking. Photo shows the above-mentioned resolution passed at the rally.

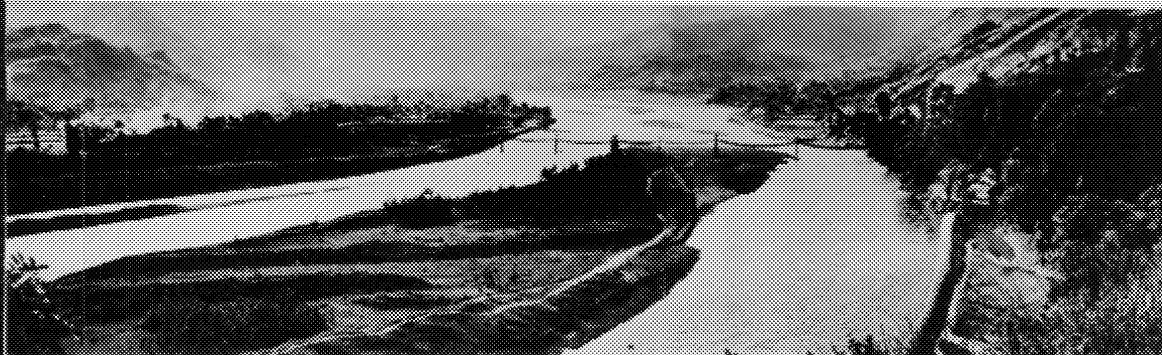
CIA-138785

-end-

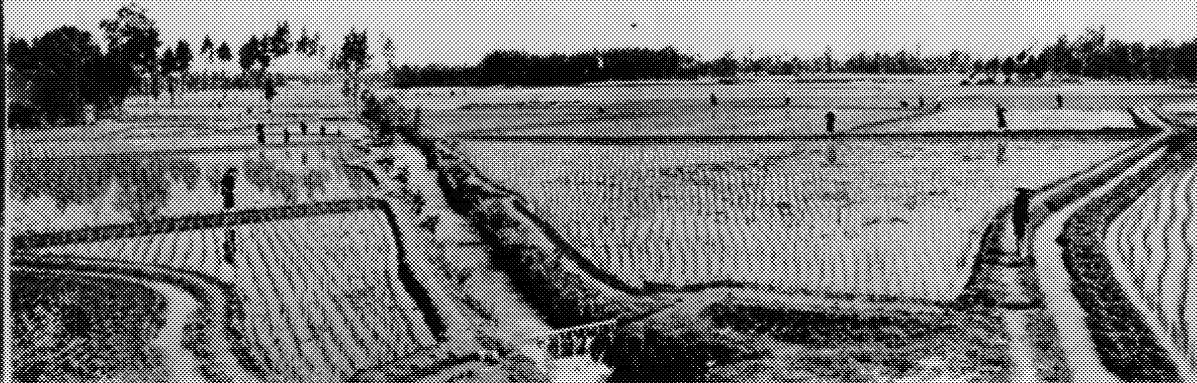
CHINA SZECHWAN PAI HSIEN 30 48 N 103 53 E
RECENTLY CONSTRUCTED LOCK, PART OF TU-CHIANG IRRIGATION SYSTEM. 1954.
OFFICIAL USE ONLY CIA 138790



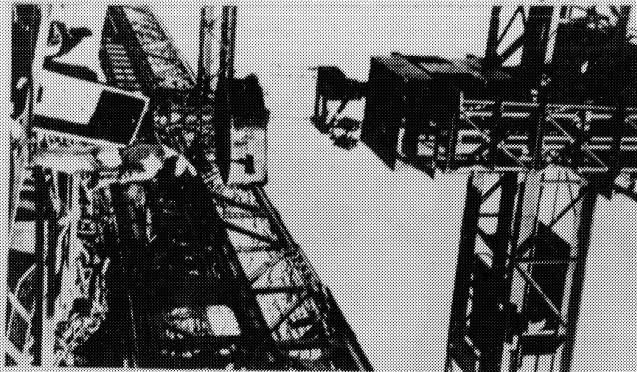
CHINA SZECHWAN TU-CHIANG WEIR 29 10 N 104 17 E (PROB)
BAMBOO BRIDGE OVER MIN CHIANG (RIVER) LOCATED AT PAI SHA HSIANG IN KUAN
COUNTY. 1954. OFFICIAL USE ONLY CIA 138791



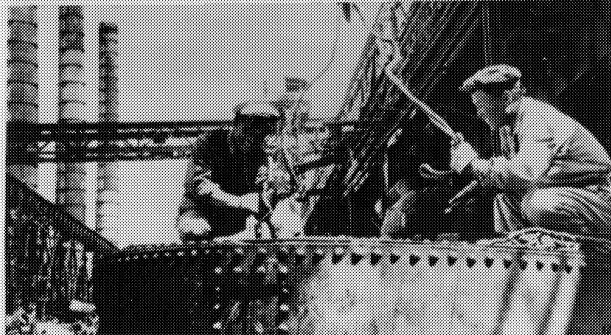
CHINA SZECHWAN TU-CHIANG WEIR 29 10 N 104 17 E (PROB.)
IRRIGATION SYSTEM. CANALS SUPPLY WATER TO 20,000,000 ACRES IN WESTERN
SECTION OF PROVINCE. 1954. OFFICIAL USE ONLY CIA 138792



KOREA HWANGHAE-DO KYONGIPO 38 44 N 125 38 E
KYONGIPO IRON SMELTING PLANT, 1954. OFFICIAL USE ONLY



KOREA HWANGHAE-DO KYONGIPO 38 44 N 125 38 E
KYONGIPO IRON SMELTING PLANT, 1954. OFFICIAL USE ONLY CIA 138768

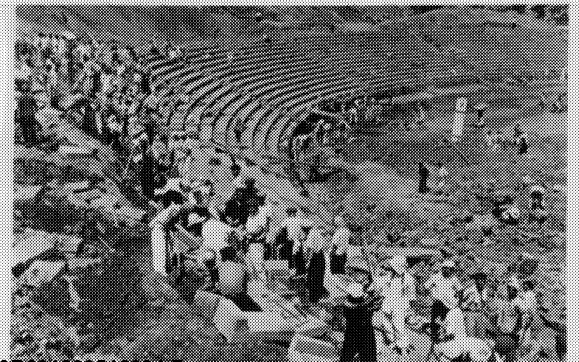


KOREA PYONGYANG 39 01 N 125 44 E
PYONGYANG TEXTILE MILL, SILK REELING SHOP, 1954. OFFICIAL USE ONLY



CIA 138766

KOREA PYONGAN-NAMEO PYONGYANG 39 01 N 125 44 E
STUDENTS OF KIM IL SUNG UNIVERSITY HELPING WITH CONSTRUCTION OF WESTERN PYONGYANG STADIUM, 1954. OFFICIAL USE ONLY CIA 138767



CHINA SZEDWAN TUN CHANGCHUN 40 30 N 108 43 E
YOUNG PIONEERS OF NO. 1 MIDDLE SCHOOL OF KUAN COUNTY
BARBED IRONCL. BACKGROUND. 1953. OFFICIAL USE ONLY CIA 138783



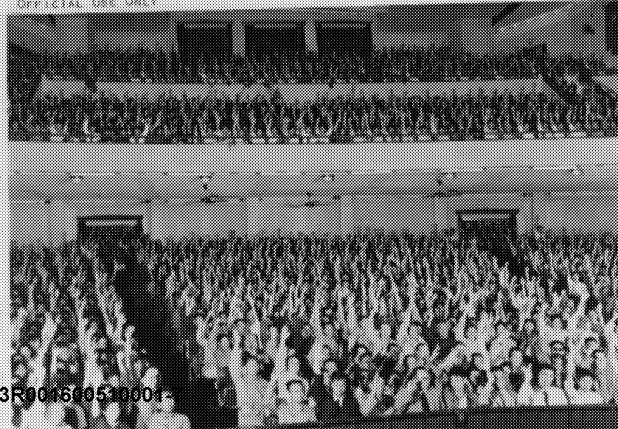
CHINA PINGYANG 39 01 N 125 44 E
RECENTLY RECONSTRUCTED PEOPLE'S SCHOOL NO. 14. 1954.
OFFICIAL USE ONLY CIA 138784



KOREA HWANGHAE-DO CHINNAMPYO 38 44 N 125 24
NAMPO IRON AND STEEL WORKS. DESIGNER CONVERTER IN COPPER SHEETING
SHOP. 1954. OFFICIAL USE ONLY CIA 138782



CHINA HOPEN PEIPING 39 56 N 116 24 E
RALLY CELEBRATING INDO-CHINESE TRUCE. 23 JULY 1954.
OFFICIAL USE ONLY CIA 138785



KOREA PYONGAN-NAKDO PYONGYANG 39 01 N 125 44 E
WORKERS OF PYONGYANG FARM MACHINERY STATION CULTIVATING. 1954.
OFFICIAL USE ONLY CIA 138781



47905

A rally hailing Indo-Chinese trade was held and a resolution greeting the cessation of hostilities in Indo-China was adopted by the Peking people on July 23, in Peking. Photo shows the above-mentioned resolution passed at the rally



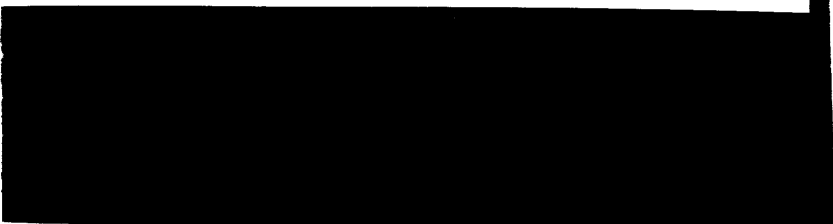
WILMINGTON
Neg. No. 49637

49637 A Korean worker at work in the silk reeling shop of the Pyongyang Textile Mill, the biggest of its kind in North Korea. The mill has started operation again after rapid restoration.



WILMINGTON
Neg. No. 51214

51214 The newly restored building of the No. 14 People's School in Pyongyang, North Korea



WILMINGTON
Neg. No. 51210

51210 Workers of the Pyongyang Farm Machinery Station in North Korea hoeing in the kaoliang field.

WILMINGTON
Neg. No. 51208

51208 The Bessemer converter of the copper smelting shop of the Nanpo Iron and Steel Works in North Korea has started operation again.

50335 - The newly built back of the stone dyke in Pi County, southeast to Kuan County

WILMINGTON
Neg. No. 50335

50336 Irrigation canals - More than 200,000 hectares of the West Szechuan Plain is crisscrossed with canals led by the Tuchiangyen irrigation system.

50341 The Tuchiangyen Dam is not only famous for its irrigation system, but is also a picturesque place. On Sundays and holidays, many people visit the dam. Photo shows Young Pioneers of the No. 1 Middle School of Kuan County sketching by the Anlansochiao (a bamboo bridge) of the Tuchiangyen Dam.

50334 In Pai Sha Hsiang of Kuan County, western Szechuan Province, the Minkiang River divides into two - an inner (right) and an outer river (left). The Tuchiangyen Dam was built just starting from the watershed of the inner and outer river.

WILMINGTON No.
~~CS-A-6018~~
Neg. No. 50334

WILMINGTON

Neg. No. 51205

51205 Workers of the Hwanghae Iron Smelting Plant in North Korea repair an ore jar.

WILMINGTON

Neg. No. 51215

51215 The Western Pyongyang Stadium in North Korea is being built. A large number of students of the Kim Il Sung University take part in the Construction of this stadium.

WILMINGTON

Neg. No. 51206

51206 - The 12 ton crane of the Hwanghae Iron Smelting Plant in North Korea has started operation again after rapid restoration,