

N USSR
VILLAGE ON THE VOLGA RIVER. 1955.

OFFICIAL USE ONLY

CIA 205143



*Down the Volga - In the center is part of a
wharf at one of the villages where freight
is to be picked up.*

25X1X



28N USSR S. EUROPEAN RSFSR ROSTOV OBLAST ROSTOV 47 15 N 39 53 E
THEATER UNDER RECONSTRUCTION. 1955. OFFICIAL USE ONLY

CIA 203124



Rostov - The capital of the Don country, an important battleground of World War II, suffered as severely as most other important Russian cities. The fine-looking Rostov Theater, of modern architectural style, was badly damaged, and has not yet been fully repaired. Still to be rebuilt is the roof which shows the effects of bombardment.

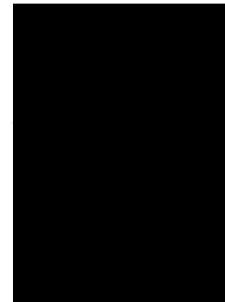
25X1X

N USSR
ROAD SIGN FOR "BUMP" ON MOSCOW-KHARKOV HIGHWAY, 1955. OFFICIAL USE ONLY CIA 203146



Sign along Kharkov - Moscow highway. The one at the lower right has no political motive at all - this marker simply means "Watch out for the bump."

25X1X



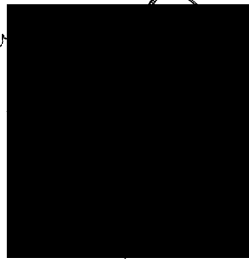
N USSR
 TYPICAL STATE HOTEL-SERVICE STATION ON MOSCOW-KHARKOV HIGHWAY. 1955.
 OFFICIAL USE ONLY

CIA 203149



most of the Kharkov-Moscow highway is
 blacktop, three lanes wide and well graded.
 There are government service stations every ~~at~~
 70 to 100 miles, with wells and hand-
 drawn buckets, outdoor comfort facilities and
 hand-operated gasoline pumps. At intervals
 of 150 miles or so, there are combined govern-
 ment hotels and service stations, as at left, with
 plain but comfortable rooms.

25X1X

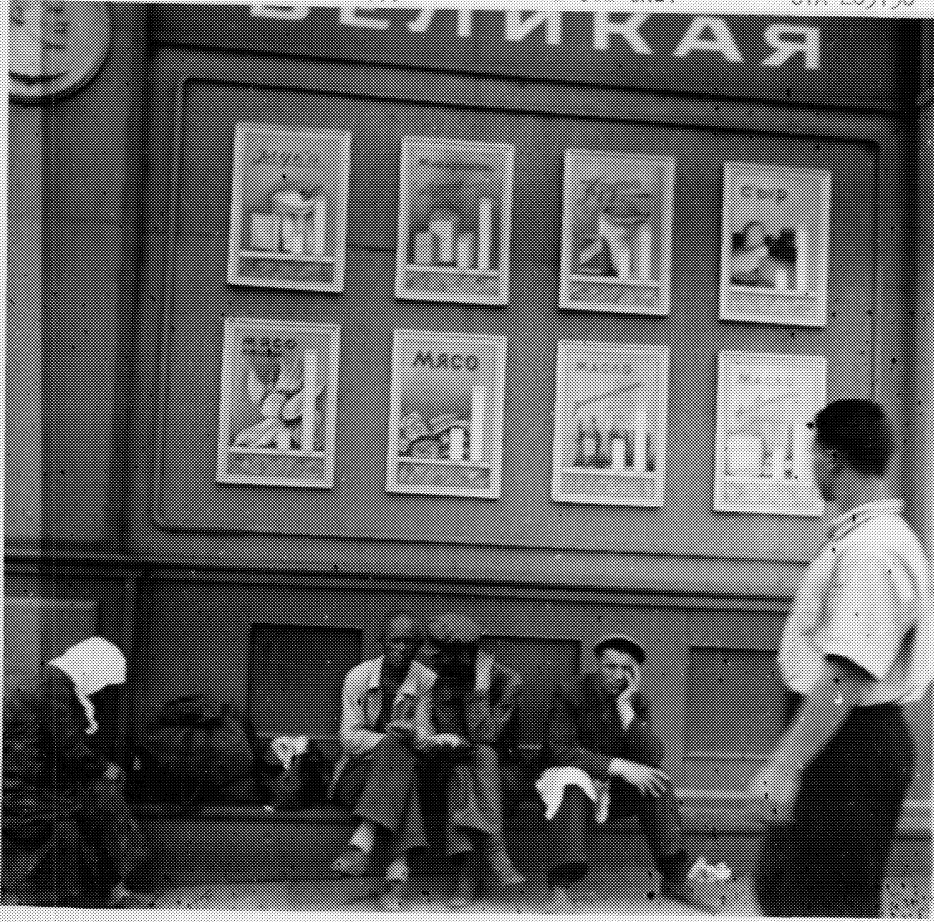


28N USSR S. EUROPEAN RSFSR STALINGRAD OBLAST STALINGRAD
48 45 N 44 25 E PLANETARIUM IN BACKGROUND. STATE INSURANCE
COMPANY POSTER ON BUILDING. 1955. OFFICIAL USE ONLY CIA 203148



Stalingrad - At the bottom is a view of ^{25X1X}
Peace Street, with a planetarium
that is described as a "gift" from the
people of East Germany. The
advertisement on the Building
at the right suggests, "Inquire households
property with the State Insurance Company."

37N USSR N. EUROPEAN RSFSR GORKIY OBLAST GORKIY 56 20 N 44 00 E
 WAITING ROOM OF BOAT LINE. CHARTS SHOW FOOD PRODUCTION GOALS OF THE
 CURRENT FIVE-YEAR PLAN. 1977. OFFICIAL USE ONLY CIA 203150



25X1X



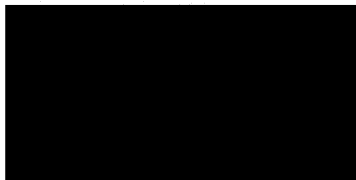
Gorki - The ancient market town of Nizhni Novgorod, has been renamed after Maxim Gorki, the writer who was born there. Today the city is a Soviet Detroit, with one of Europe's largest auto plants and a population of more than 1,000,000. A group of travelers sits in the boat's line waiting room at Gorki beneath a series of graphs showing production goals of the current five-year plan.

N USSR
MOSCOW-KHARKOV HIGHWAY. SIGN READS "NEW VILLAGE". 1955.
OFFICIAL USE ONLY

CIA 203145



25X1X



Kharkov-Moscow highway. Highway markers are a mixture of advertising propaganda and directions. Sign in center photo identifies "new village," in background, not much different from older ones.



Stalingrad - In center, on the main square,
is the entrance to Stalingrad Drama Theater.

25X1X



Chernov