

~~CONFIDENTIAL~~

Legend for Map of Odraport, Swinoujscie

(The map and following legend are accurate as of June 1954)

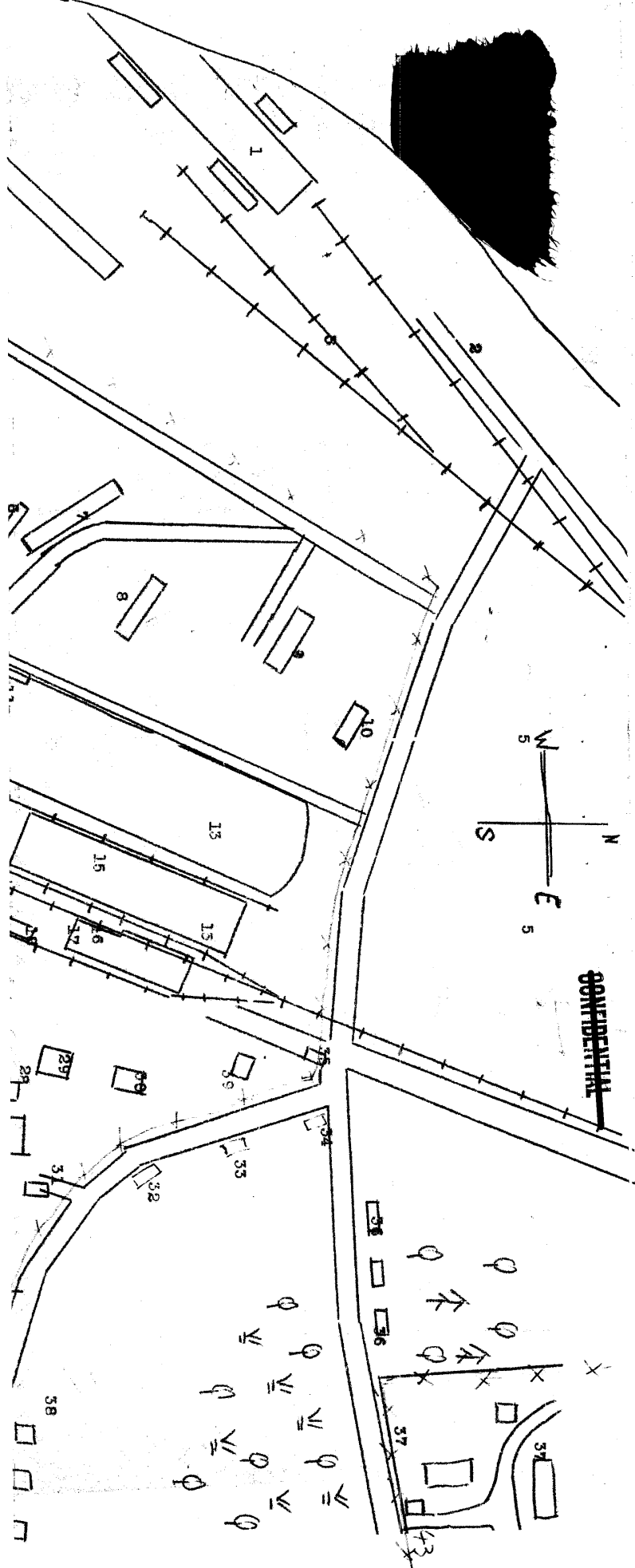
I think Odraport is still under construction, but the main basin (13 is finished, and offers ample space for the ODRA fishing fleet. The port is located on a branch of the Swina. The entrance to the port is marked by buoys (40). The main basin is about 200 meters long and about 70 meters wide. On the southeastern bank it has concrete quays, well made and modern in construction (14). Along this [see map] is a little wooden pier (20) for the local ferry going from Swina to Szczecin. Immediately behind this pier is a two storey building in which different administrative offices are located as is a WOP watch-tower (19). Travelling northeast along the quay there is an ice factory with ice-breaking machines for the fishing industry (42). Further to the northeast are warehouses and fish-processing works (15). Next to them is a cold-storage (16) connected by rail with the loading facilities. Next to this there is a small guard room of the Industrial Guard (Strasz Przemyslowa) (17) and in the vicinity is a boiler room (18). Warehouses and cold-storages are connected by a many-branched railway line, and with the main line going north.

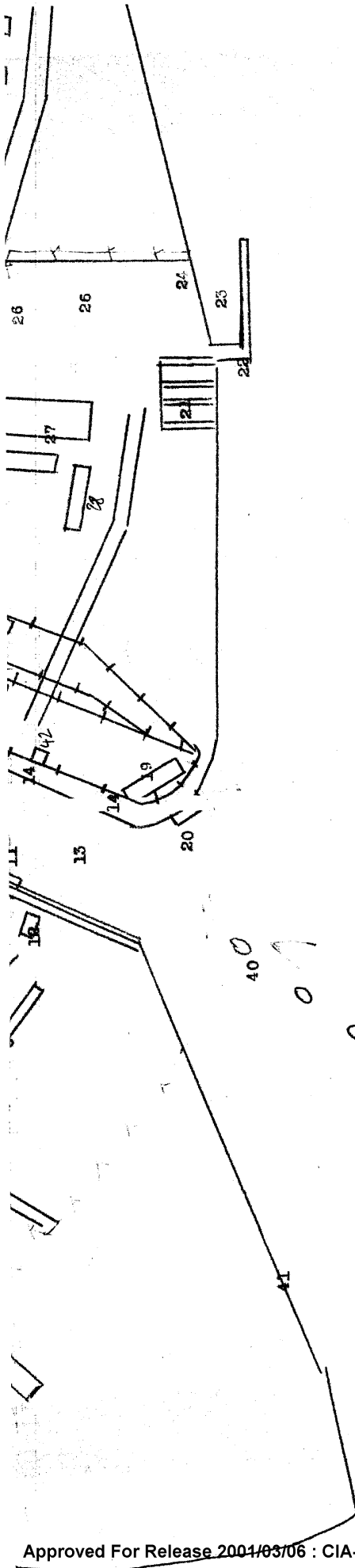
On the northwest side of the basin there are cranes (11), fuel stores, etc. (12) is a crude-oil pump; (6) and (7) are stores and administrative buildings; (8) is a water tank; (10) is the guard room of Strasz Przemyslowa; (9) is the main building of Strasz Przemyslowa - Industrial Guard.

Further to the northwest is a small basin for the Swedish ferry; and also buildings of the ODRA station connected with the other sections of the port by road and rail. All this is numbered (1) (2) (3). In the northern part of the area is an empty lot for development (5).

Southeast of the basin (13) and fish processing establishment, are shipyards for repair and construction of fishing vessels. There are three or four slipways for fishing boats (21), a jetty for mooring ships (24), a small basin (22) with dry dock for fishing boats up to 1,000 tons (23). In one area (26) are various small establishments of the shipyards. Building (27) houses mechanical workshop; the two buildings (28) are carpenters' workshops; (29), (30), (39) and (32) are different barracks and warehouses. Building (33) is a shop for the fishermen; (34) is the WOP and UB office; (35) is the entrance to the area and Industrial Guard post. Another entrance (31) is along the road to Kazimierzowo. North of Kazimierzowo are additional warehouses (37) with a special Strasz Przemyslowa post (43). Buildings market (37) are administrative. All of Odraport is surrounded by barbed wire or net or brick fences and walls, as marked on the plan. The same applies to the extra warehouses (37).

~~CONFIDENTIAL~~





4, 25, 43 - cannot be located -

~~CONFIDENTIAL~~

25X1A2g



1 encl.

~~CONFIDENTIAL~~

**RETURN
IN THIS
ENVELOPE**

**RETURN
IN THIS
ENVELOPE**