

SPAIN MALAGA

COASTLINE FROM MAIN COAST ROAD LOOKING WSW. GIBRALTAR IN BACKGROUND, TEN MILES DISTANT. FEBRUARY 1954.

OFFICIAL USE ONLY

CIA 192673



SPAIN MALAGA TORREMOLINOS 36 37 N 04 30 W

LOOKING NNE FROM POINT WEST OF TOWN. SCHOOL ON HILLTOP. MOUNTAINS FROM ONE AND A HALF TO TWO MILES DISTANT. SUGAR CANE, FOREGROUND. FEBRUARY 1954.

OFFICIAL USE ONLY

CIA 192674



SPAIN MALAGA TORREMOLINOS 36 37 N 04 30 W

LOOKING N. FROM COAST ROAD EAST OF TOWN. FEBRUARY 1954.

OFFICIAL USE ONLY

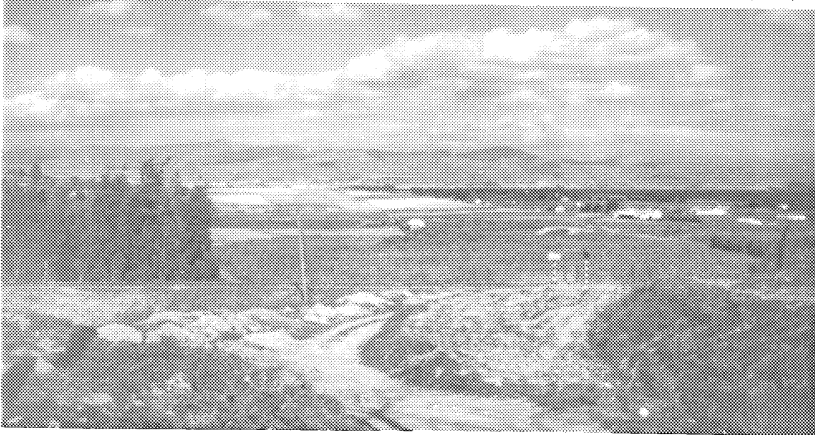
CIA 192675



SPAIN MALAGA

LOOKING EAST TOWARD MALAGA FROM MAIN COAST ROAD. SINGLE TRACK RAILWAY, FOREGROUND. SECONDARY DIRT ROAD, CENTER FOREGROUND. MALAGA TEN MILES DISTANT. FEBRUARY 1954. OFFICIAL USE ONLY

CIA 192676



SPAIN MALAGA

COASTAL PLAIN TEN MILES WEST OF MALAGA LOOKING EAST. SUGAR-CANE, RIGHT. FEBRUARY 1954. OFFICIAL USE ONLY

CIA 192677

