

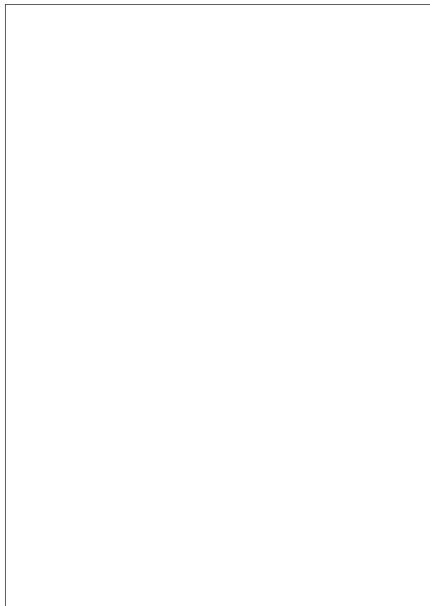
U

1 of 10

**NPIC DATA SYSTEM
DATA AND CONTROL SEGMENT
ACQUISITION PHASE**

- APPENDIX C4 — OBS DICTIONARY**
- APPENDIX C5 — MASTER SCHEDULE**
- APPENDIX C6 — BOC PRICE**
- APPENDIX C7 — IOC PRICE**
- APPENDIX C8 — FOC PRICE**
- APPENDIX C9 — INTEGRATED WORK STATION PRICE**
- APPENDIX C11 — ADPE PROCUREMENT OPTIONS**

REVISION



STAT

31 March 1982

NPIC DATA SYSTEM
DATA AND CONTROL SEGMENT
ACQUISITION PHASE

- APPENDIX C4 - OBS DICTIONARY
- APPENDIX C5 - MASTER SCHEDULE
- APPENDIX C6 - BOC PRICE
- APPENDIX C7 - IOC PRICE
- APPENDIX C8 - FOC PRICE
- APPENDIX C9 - INTEGRATED WORK STATION PRICE
- APPENDIX C11 - ADPE PROCUREMENT OPTIONS

REVISION

STAT

31 March 1982

This data, furnished in connection with this solicitation, shall not be disclosed outside the Government and shall not be duplicated, used, or disclosed in whole or in part for any purpose other than to evaluate the proposal; provided, that if a contract is awarded to this offeror as a result of, or in connection with, the submission of this data, the government shall have the right to duplicate, use, or disclose the data if, and to the extent, it is so provided in the contract. This restriction does not limit the government's right to use information contained in the data if it is rightfully obtained from another source without restriction. The data subject to this restriction is contained in the pages appropriately marked.

The data in the pages of this proposal where so annotated contains trade secrets and commercial or financial information that are either specifically exempted from disclosure by statute or privileged or confidential within the meaning of the exemption that is set forth in Section 552 (b) (3) and (4), respectively, of the Freedom of Information Act, 5 U.S.C. 552, the disclosure of which could invoke the criminal sanctions of 18 U.S.C. 1905.

STAT

APPENDIX C4

OBS DICTIONARY

The OBS Dictionary is directly related to the D/C Segment project organization structure. The project manager has all technical functions, subcontractor management and the project control office reporting directly to him. Three other staff functions have project responsibilities and have committed their support and services, these are Contracts, Security and Product Assurance. Figure 1 shows the hierarchical relationship between elements of the D/C Segment project organization. The dictionary relates the project efforts as defined by the work breakdown structure and the statement of work to the organization. These efforts are described in terms such as design, provide, prepare, monitor, develop, test, etc. The dictionary uses the hierarchical reference number and organization function as the key item identifier. The tasks associated with these functions are then listed with their work breakdown structure number and/or statement of work number as appropriate.

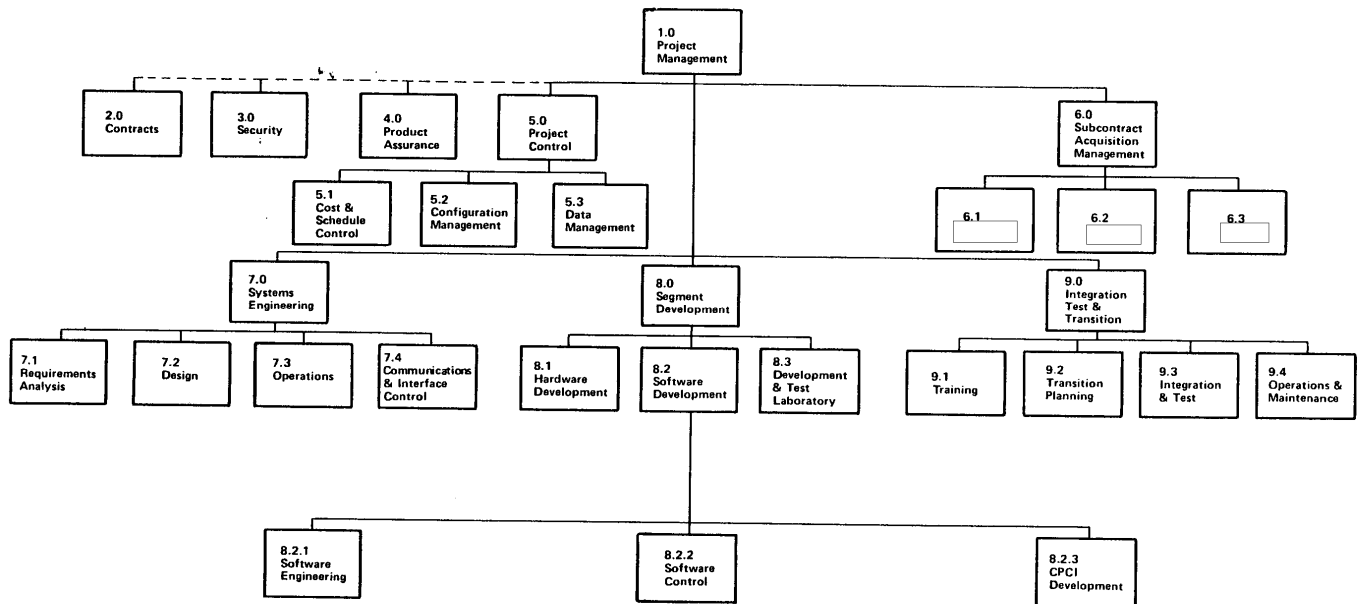


Figure 1. D/C Segment Project Hierarchical Structure

OBS DICTIONARY

<u>OBS REF</u>	<u>ORGANIZATIONAL ELEMENT</u>	<u>WBS #</u>	<u>SOW #</u>	<u>ASSOCIATED TASK</u>
1.0	PROJECT MANAGEMENT	241000	4.1.1	o PROVIDE PROJECT ORGANIZATION AND MANAGEMENT
2.0	CONTRACTS	--	--	o CONTRACTURAL ADMINISTRATION AND SUPPORT
3.0	SECURITY	341500 541500	4.1.5	o PREPARE SECURITY PLAN AND PROCEDURES o IMPLEMENT SECURITY PROCEDURES
4.0	PRODUCT ASSURANCE	341300 541300	4.1.3	o PROVIDE QUALITY ASSURANCE PLAN o IMPLEMENT SOFTWARE QUALITY ASSURANCE o IMPLEMENT HARDWARE QUALITY ASSURANCE o MONITOR SUBCONTRACTOR QUALITY ASSURANCE o PROVIDE QUALITY ASSURANCE AUDIT REPORTS
5.0	PROJECT CONTROL	341200	4.1.2	
5.1	COST & SCHEDULE CONTROL	541200		o MONITOR, CONTROL AND REPORT SCHEDULE STATUS o MONITOR, CONTROL AND REPORT COST STATUS
5.2	CONFIGURATION MANAGEMENT	341400 541400	4.1.4	o PREPARE AND MAINTAIN CM PLAN AND PROCEDURES o PREPARE ENGINEERING CHANGE NOTICES/ REQUESTS AND OTHER CM RELATED DOCUMENTS o PERFORM CM AUDITS o PROVIDE MASTER PRODUCT & DOCUMENT CONTROL o PREPARE/MAINTAIN SOFTWARE VERSION DESCRIPTION DOCUMENT o ADMINISTER CONTRACTOR CCB o PROVIDE CHANGE STATUS ACCOUNTING

OBS DICTIONARY
(CONTINUED)

<u>OBS REF</u>	<u>ORGANIZATIONAL ELEMENT</u>	<u>WBS #</u>	<u>SOW #</u>	<u>ASOCIATED TASK</u>
5.3	ADMINISTRATIVE DATA MANAGEMENT	341800 541800	4.1.8	<ul style="list-style-type: none"> o PROVIDE PUBLICATION, MAINTENANCE AND CONTROL OF ALL PROJECT DOCUMENTATION o PREPARE AND ADMINISTER DOCUMENT MANAGEMENT PLAN
6.0	SUBCONTRACT ACQUISITION MANAGEMENT	341700	4.1.7	
6.1		541700		<ul style="list-style-type: none"> o PROVIDE MANAGEMENT, CONTROL AND VISIBILITY TO COST SCHEDULE OF
6.2				<ul style="list-style-type: none"> o PROVIDE MANAGEMENT, CONTROL AND VISIBILITY TO COST SCHEDULE OF
6.3				<ul style="list-style-type: none"> o PROVIDE MANAGEMENT, CONTROL AND VISIBILITY TO COST SCHEDULE OF
7.0	SYSTEMS ENGINEERING	342000 342100 542100	4.2 4.2.1	<ul style="list-style-type: none"> o SYSTEMS ENGINEERING MANAGEMENT o PROVIDE TECHNICAL MANAGEMENT OF PROJECT o PROVIDE/ENFORCE S/W, OPERATIONS, H/W INTERFACE STANDARDS
		442800	4.2.8	<ul style="list-style-type: none"> o PREPARE SEGMENT DEVELOPMENT PLAN o PROVIDE SEGMENT TECHNICAL REVIEWS AND ACTION ITEM FOLLOW-UP (PDR, CDR, SRR, ETC.)
7.1	REQUIREMENTS ANALYSIS	342200 542200	4.2.2	<ul style="list-style-type: none"> o PROVIDE REQUIREMENTS ANALYSIS AND TRACEABILITY
		542201 542202 542203		<ul style="list-style-type: none"> o PROVIDE PERFORMANCE ANALYSIS o PROVIDE RMA ANALYSIS o PREPARE SEGMENT DESIGN ANALYSIS REPORT
		542204 542205 542206		<ul style="list-style-type: none"> o ACCOMPLISH TRADE STUDIES o PROVIDE ENGINEERING SPECIALTIES o PROVIDE SUPPORT TO INTERSEGMENT INTERFACE DEFINITION AND REQUIREMENTS DETERMINATION
		542207 542700	4.2.7	<ul style="list-style-type: none"> o PREPARE ENGINEERING TECHNICAL NOTES o EVALUATE PROPOSED CHANGES o PROVIDE CHANGE REQUEST IMPACT ANALYSIS o PROVIDE INTERFACE CONTROL

OBS DICTIONARY
(CONTINUED)

<u>OBS REF</u>	<u>ORGANIZATIONAL ELEMENT</u>	<u>WBS #</u>	<u>SOW #</u>	<u>ASSOCIATED TASK</u>
7.2	DESIGN	342400 542400 542401 542402	4.2.4	<ul style="list-style-type: none"> o PREPARE SEGMENT DESIGN SPECIFICATION o PROVIDE DATA BASE SPECIFICATIONS o PROVIDE ENGINEERING SPECIALTIES DESIGN
7.3	OPERATIONS ENGINEERING & DEVELOPMENT	542403 342300 542300 542301 542302 542303 542304 542305 342600 542600 542601 542602	4.2.3 4.2.6	<ul style="list-style-type: none"> o PROVIDE ILS DESIGN o DEVELOP SEGMENT OPERATIONS CONCEPTS, PROCEDURES AND SPECIFICATIONS o DEVELOP USER MANUALS o DEVELOPMENT SEGMENT/SYSTEMS OPERATIONS MANUALS o CONDUCT PRODUCTIVITY ENHANCEMENT STUDIES o PREPARE O&M PLAN o PREPARE MAINTENANCE AND LOGISTICS PLAN o TEST SUPPORT o PREPARE SEGMENT VERIFICATION PLAN o PREPARE SEGMENT TEST PLAN AND PROCEDURES o SUPPORT THE EXECUTION AND EVALUATION OF TESTS
7.4	COMMUNICATIONS AND INTERFACE CONTROL	342500 542500 542501 542502	4.2.5	<ul style="list-style-type: none"> o TRANSITION AND INTEGRATION PLANNING AND SUPPORT o DEVELOP SEGMENT TRANSITION AND INTEGRATION PLAN o SUPPORT FACILITY PLANNING, INSTALLATION AND CHECKOUT o SUPPORT TRANSITION OF NEW CAPABILITY INTO THE OPERATIONAL ENVIRONMENT o PROVIDE INTERSEGMENT INTERFACE DEFINITION o ASSURE CONTROLLED INTERFACE DESIGN o PROVIDE FOR CONTROLLED INTRASEGMENT STANDARDS AND INTERFACES
8.0	SEGMENT DEVELOPMENT	--		
8.1	HARDWARE DEVELOPMENT	246000 346100 546100 546101	4.6 4.6.1	<ul style="list-style-type: none"> o HARDWARE DEVELOPMENT MANAGEMENT o MANAGE ALL HARDWARE DEVELOPMENT o SET AND MAINTAIN HARDWARE DESIGN, FABRICATION, TEST PRACTICES, STANDARDS AND CONVENTIONS

OBS DICTIONARY
(CONTINUED)

<u>OBS REF</u>	<u>ORGANIZATIONAL ELEMENT</u>	<u>WBS #</u>	<u>SOW #</u>	<u>ASOCIATED TASK</u>
		546102		o PROVIDE INPUTS TO THE SEGMENT DEVELOPMENT PLAN
		346200	4.6.2	o CI: BASIC WORK STATION
		546210	4.6.2.1	o ACCOMPLISH PRELIMINARY CI DESIGN/ REQUIREMENTS ANALYSIS AND ALLOCATION
		546211		o PREPARE CI SPECIFICATIONS AND CONDUCT INTERNAL DESIGN REVIEWS
		546212		o ACCOMPLISH PRELIMINARY DESIGN OF COMMERCIAL PRODUCT MODIFICATIONS
		446220	4.6.2.2	o CRITICAL DESIGN
		546220		o ACCOMPLISH DETAILED DESIGN OF CI
		546221		o PREPARE BUILD-TO COMPONENT SPECIFICATIONS
		546222		o CONDUCT INTERNAL DESIGN REVIEWS
		546223		o ACCOMPLISH CRITICAL DESIGN OF COMMERCIAL PRODUCT MODIFICATION
		446230	4.6.2.3	o DEVELOPMENT
		546230		o ACCOMPLISH FABRICATION OF ALL MANUFACTURED HARDWARE
		546231		o ACCOMPLISH MODIFICATION OF ALL COMMERCIAL PRODUCTS
		546232		o PREPARE AS-BUILT COMPONENT SPECIFICATIONS
		446240	4.6.2.4	o TEST
		546240		o PREPARE HARDWARE TEST PROCEDURES
		546241		o TEST HARDWARE AT COMPONENT AND CI LEVELS
		546242		o SUPPORT AND TEST VERIFICATION
		446250	4.6.2.5	o DOCUMENTATION
		546250		o PREPARE EQUIPMENT OPERATION AND MAINTENANCE MANUALS
		546251		o PREPARE INPUTS TO SEGMENT/SYSTEM OPERATIONS AND USER MANUALS
		546252		o PREPARE INPUTS TO TRAINING MANUALS
8.2	SOFTWARE DEVELOPMENT	243000	4.3	
		343100	4.3.1	o SOFTWARE DEVELOPMENT MANAGEMENT
		543100		o MANAGE ALL SOFTWARE DEVELOPMENT ACTIVITIES
		543101		o PROVIDE/ENFORCE PROGRAM DESIGN, CODING AND TEST PRACTICES, STANDARDS AND CONVENTIONS
8.2.1	SOFTWARE ENGINEERING	543102		o SOFTWARE ENGINEERING/ARCHITECTURE
8.2.2	SOFTWARE CONTROL	543103		o SOFTWARE CONTROL
		543104		o PROVIDE INPUT TO SEGMENT DEVELOPMENT PLAN
		543105		o IMPLEMENT DATA BASE

OBS DICTIONARY
(CONTINUED)

<u>OBS REF</u>	<u>ORGANIZATIONAL ELEMENT</u>	<u>WBS #</u>	<u>SOW #</u>	<u>ASOCIATED TASK</u>
8.2.3	CPCI DEVELOPMENT	343200	4.3.2	
		443210	4.3.2.1	o PRELIMINARY DESIGN
		543210		o PREPARE PRELIMINARY DESIGN SPECIFICATIONS
		443220	4.3.2.2	o CRITICAL DESIGN
		543220		o PREPARE BUILD-TO DESIGN SPECIFICATIONS
8.2.3	CPCI DEVELOPMENT (CONTINUED)	443230	4.3.2.3	o DEVELOPMENT
		543230		o DEVELOP CPCs, CODE AND DEBUG
		443240	4.3.2.4	o TEST
		543240		o TEST AND PREPARE REPORTS
		443250	4.3.2.5	o DOCUMENTATION
		543250		o PREPARE AS-BUILT DOCUMENTATION
8.3	DEVELOPMENT AND TEST LABORATORY	241600	4.16	
		341610	4.16.1	o DEVELOPMENT AND TEST LABORATORY MANAGEMENT
		541610		o PROVIDE MANAGEMENT, PLANNING AND CONTROL OF FACILITIES
		541620	4.16.2	o PROVIDE SERVICES FOR DEVELOPMENT AND TEST LABORATORY
		541630	4.16.3	o PROVIDE ADPE CAPABLE OF SUPPORTING THE DEVELOPMENT AND TEST LABORATORY
		541640	4.16.4	o OPERATE AND MAINTAIN THE DEVELOPMENT AND TEST LABORATORY
9.0	INTEGRATION, TEST AND TRANSITION	241000	4.10	o TEST AND VERIFICATION
		541000	4.10.1	o PROVIDE MANAGEMENT OF SEGMENT TEST ACTIVITIES
9.1	TRAINING	241700	4.17	
		541700	4.17.1	o PROVIDE MANAGEMENT OF TRAINING ACTIVITIES
		541720	4.17.2	o PROVIDE SEGMENT TRAINING PLAN o PREPARE USER TRAINING MATERIALS o TRAIN USERS AND GOVERNMENT INSTRUCTORS
		541730	4.17.3	o PREPARE OPERATOR TRAINING MATERIALS o TRAIN SEGMENT AND SYSTEM OPERATORS AND MANAGEMENT PERSONNEL
		541740	4.17.4	o PREPARE AND DELIVER MAINTENANCE TRAINING MATERIALS o TRAIN SEGMENT MAINTENANCE PERSONNEL
9.2	TRANSITION PLANNING	541000	4.10.1	o PREPARE TEST PLANS

OBS DICTIONARY
(CONTINUED)

<u>OBS REF</u>	<u>ORGANIZATIONAL ELEMENT</u>	<u>WBS #</u>	<u>SOW #</u>	<u>ASSOCIATED TASK</u>
		541020	4.10.2	<ul style="list-style-type: none"> o PREPARE TEST PROCEDURES o PROVIDE NECESSARY SOFTWARE TO SUPPORT INTEGRATED TESTING
9.3	INTEGRATION AND TEST	241300	4.13	
		541310	4.13.1	<ul style="list-style-type: none"> o INSTALLATION, CHECKOUT AND TEST o PROVIDE MANAGEMENT OF INSTALLATION, CHECKOUT AND TEST
9.3	INTEGRATION AND TEST (CONTINUED)	541320	4.13.2	<ul style="list-style-type: none"> o PROVIDE FACILITY INTERFACE REQUIREMENTS o PROVIDE FACILITY PLANNING
		541330	4.13.3	<ul style="list-style-type: none"> o PREPARE SEGMENT SHIPPING PLAN o PREPARE SEGMENT INSTALLATION PLAN o PROVIDE FOR SHIPMENT OF ALL ITEMS o ACCOMPLISH SEGMENT INTEGRATION AND TRANSITION TO OPERATIONAL STATUS
		541340	4.13.4	<ul style="list-style-type: none"> o PERFORM FORMAL SITE SEGMENT TEST o PROVIDE SITE SEGMENT TEST REPORT
		541350	4.13.5	<ul style="list-style-type: none"> o PARTICIPATE IN ON-SITE TESTING
9.4	OPERATIONS & MAINTENANCE	541360	4.13.6	<ul style="list-style-type: none"> o SUPPORT PROGRAM DEMOS
		241800	4.18	
		541810	4.18.1	<ul style="list-style-type: none"> o PROVIDE O&M MANAGEMENT
		541811		<ul style="list-style-type: none"> o PROVIDE O&M PROJECT CONTROL
		541812	4.18.2	<ul style="list-style-type: none"> o PROVIDE SPARING OF SEGMENT EQUIPMENT AND EXPENDABLES
		341830	4.18.3	<ul style="list-style-type: none"> o SOFTWARE MAINTENANCE
		541830		<ul style="list-style-type: none"> o PROVIDE SYSTEMS ENGINEERING
		541831		<ul style="list-style-type: none"> o PROVIDE SOFTWARE MANAGEMENT
		541832		<ul style="list-style-type: none"> o PROVIDE ANALYSIS, ERROR CORRECTION AND UPDATE DOCUMENTATION
		541833		<ul style="list-style-type: none"> o TEST SOFTWARE CHANGES
		541834		<ul style="list-style-type: none"> o MAINTAIN COMMERCIAL SOFTWARE PRODUCTS
		341840	4.18.4	<ul style="list-style-type: none"> o HARDWARE MAINTENANCE
		541840		<ul style="list-style-type: none"> o PROVIDE ANALYSIS, ERROR CORRECTION AND UPDATE DOCUMENTATION
		541841		<ul style="list-style-type: none"> o MAINTAIN COMMERCIAL HARDWARE
		341850	4.18.5	<ul style="list-style-type: none"> o CONFIGURATION CONTROL
		541850		<ul style="list-style-type: none"> o SUPPORT CONFIGURATION CONTROL FOR OPERATIONAL SOFTWARE AND HARDWARE
		341860	4.18.6	<ul style="list-style-type: none"> o PROVIDE ADMINISTRATIVE SUPPORT AND DOCUMENT CONTROL

MASTER SCHEDULE

APPENDIX C5
MASTER SCHEDULE

Basic proposal schedules are unchanged from February 24, 1982 submittal. Figures 1-6, which follow, provide schedules for the options.

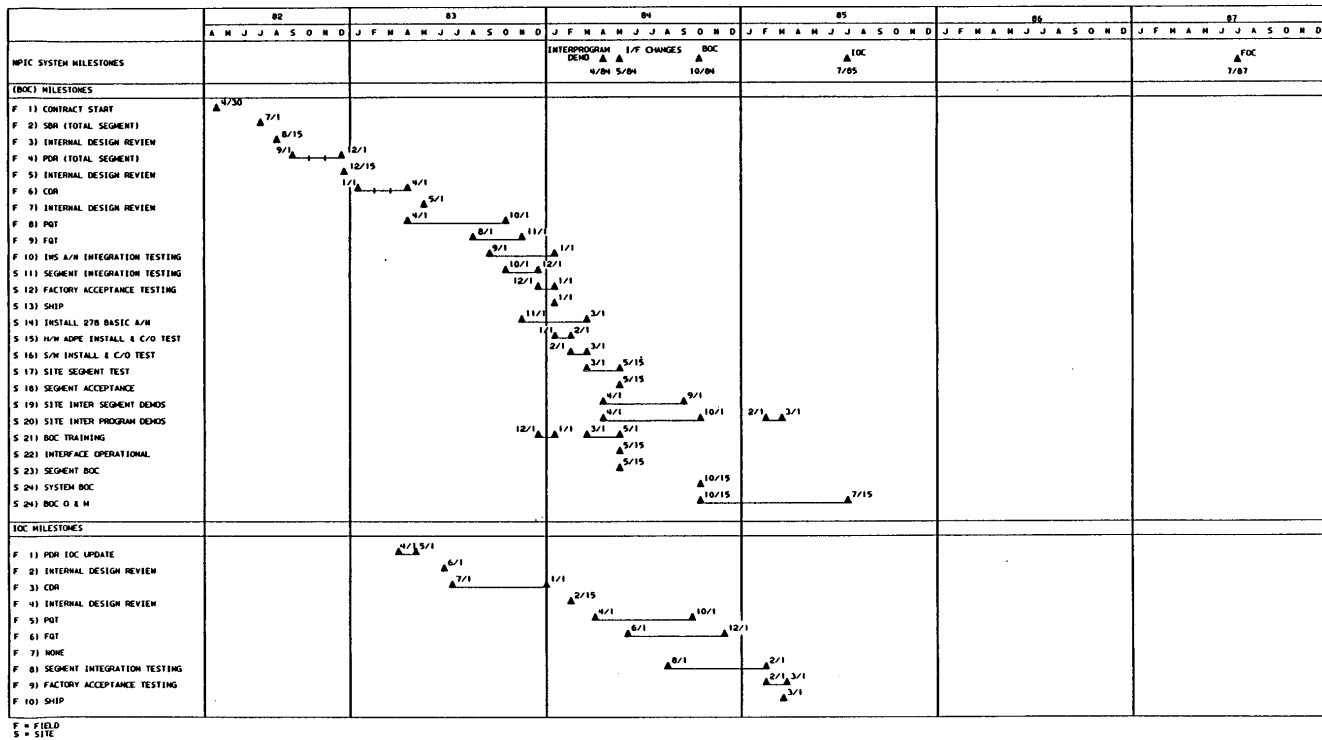


Figure 1. Option A Master Schedule (Sheet 1 of 2)

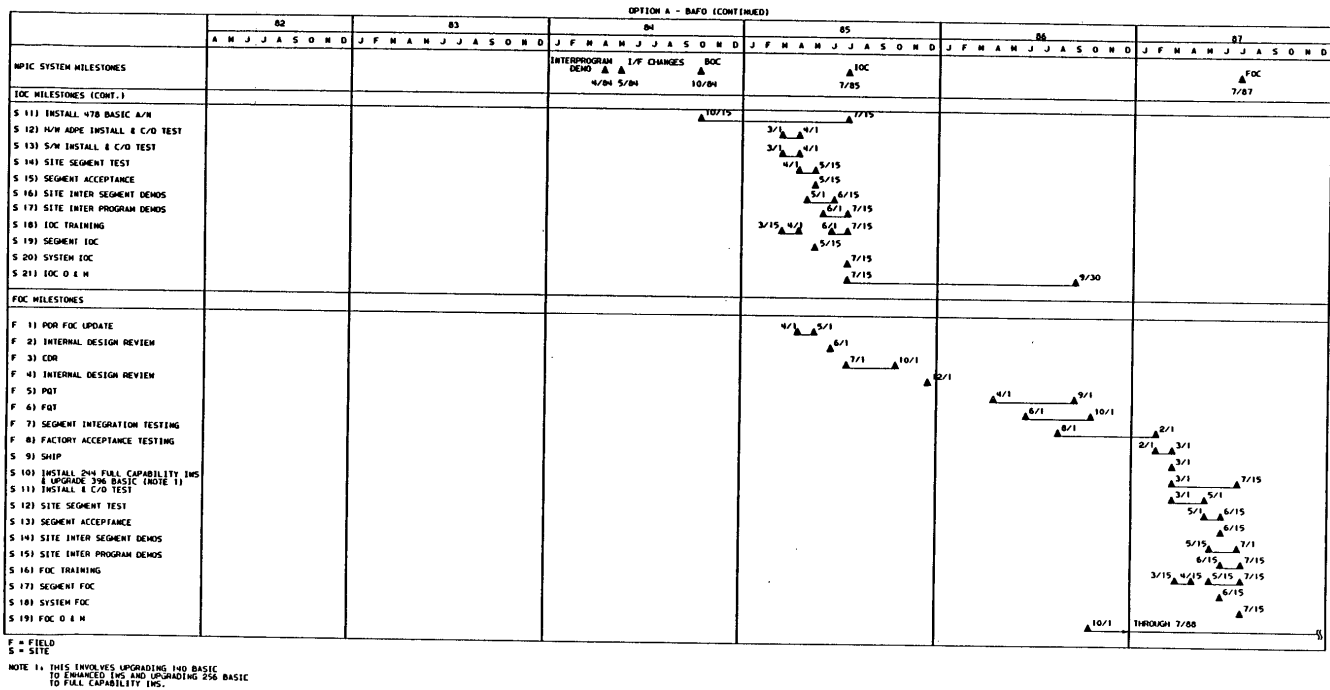


Figure 1. Option A Master Schedule (Sheet 2 of 2)

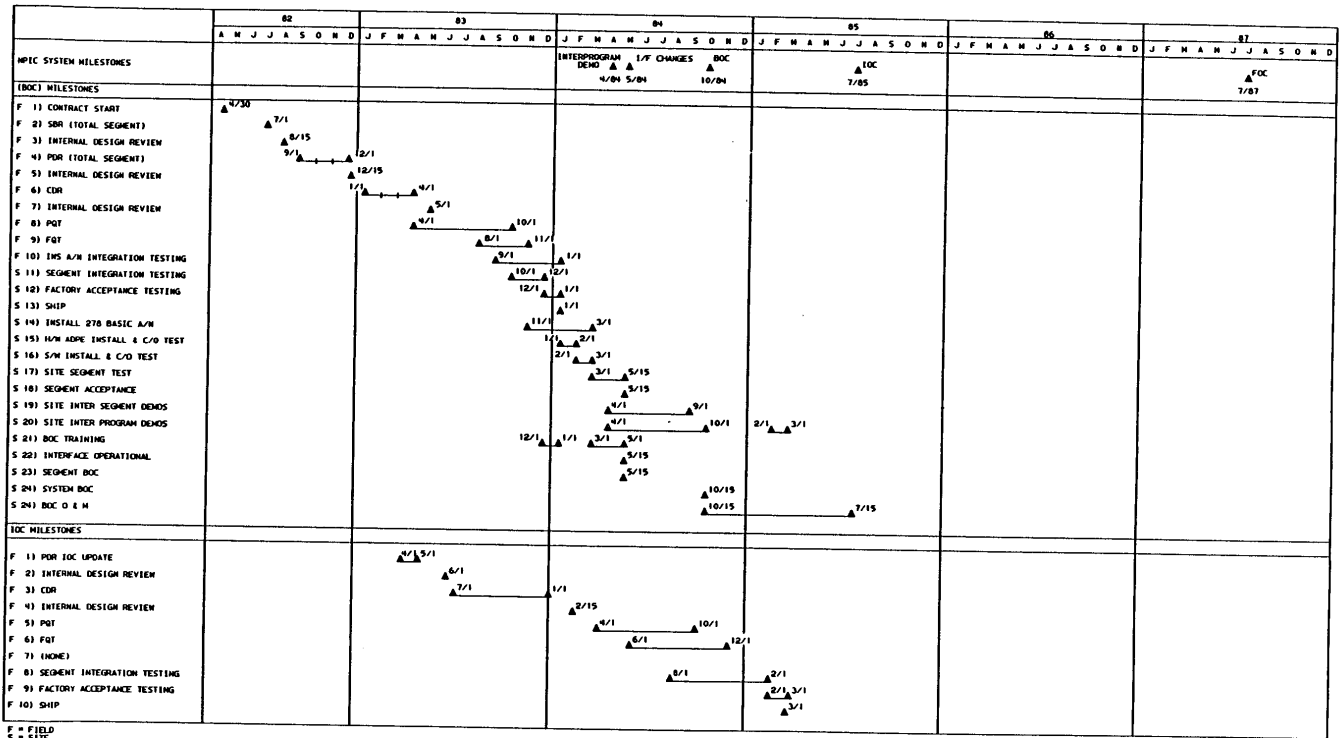


Figure 2. Option B Master Schedule (Sheet 1 of 2)

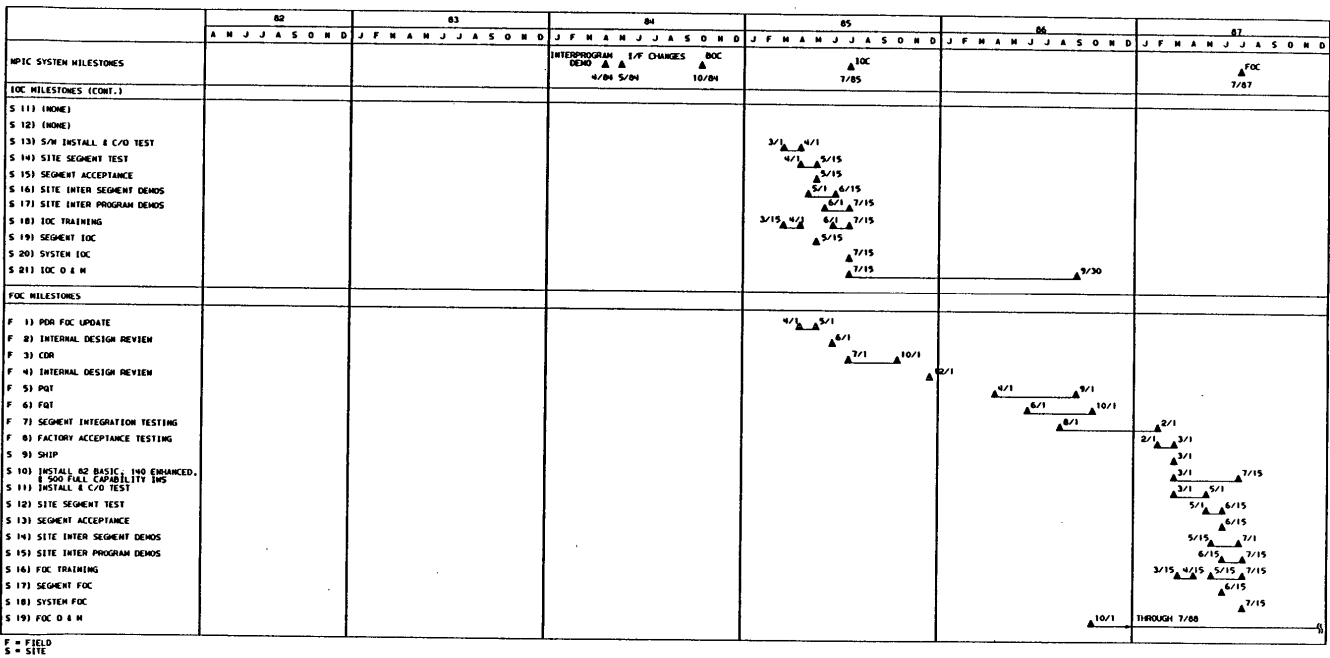


Figure 2. Option B Master Schedule (Sheet 2 of 2)

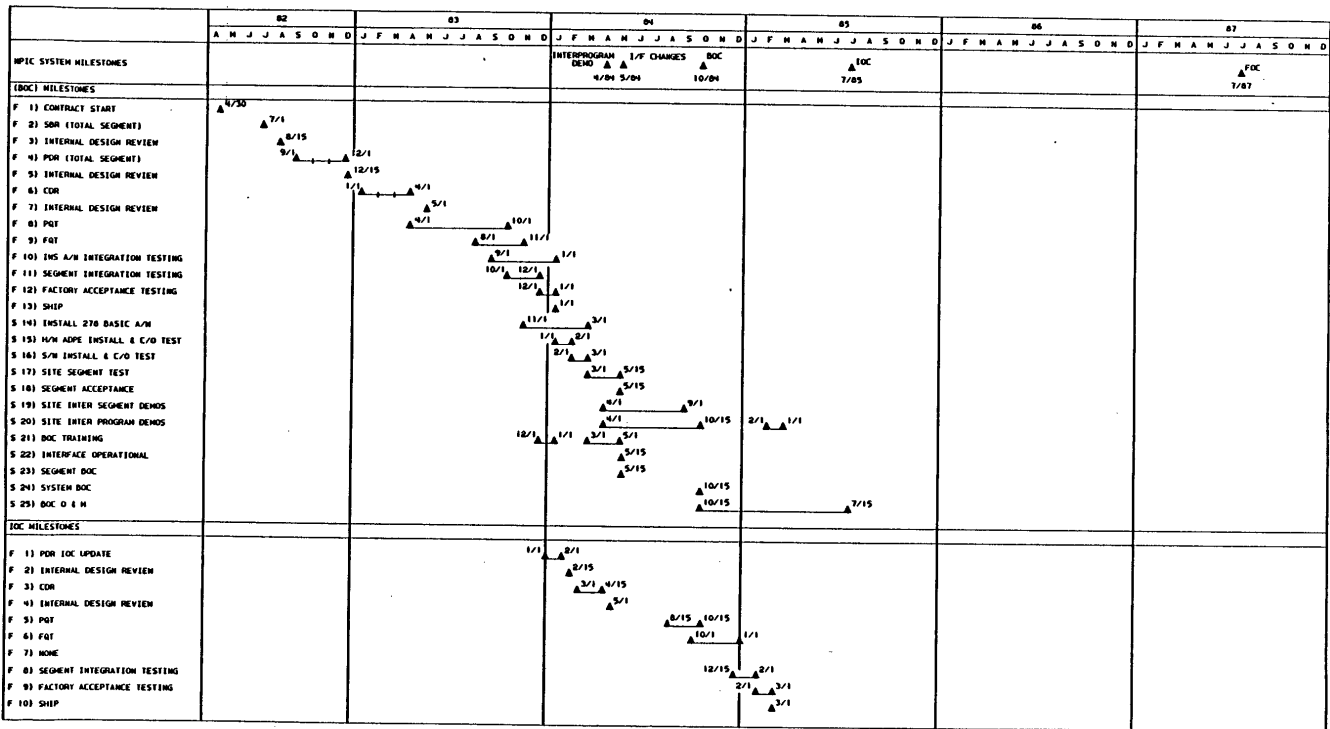
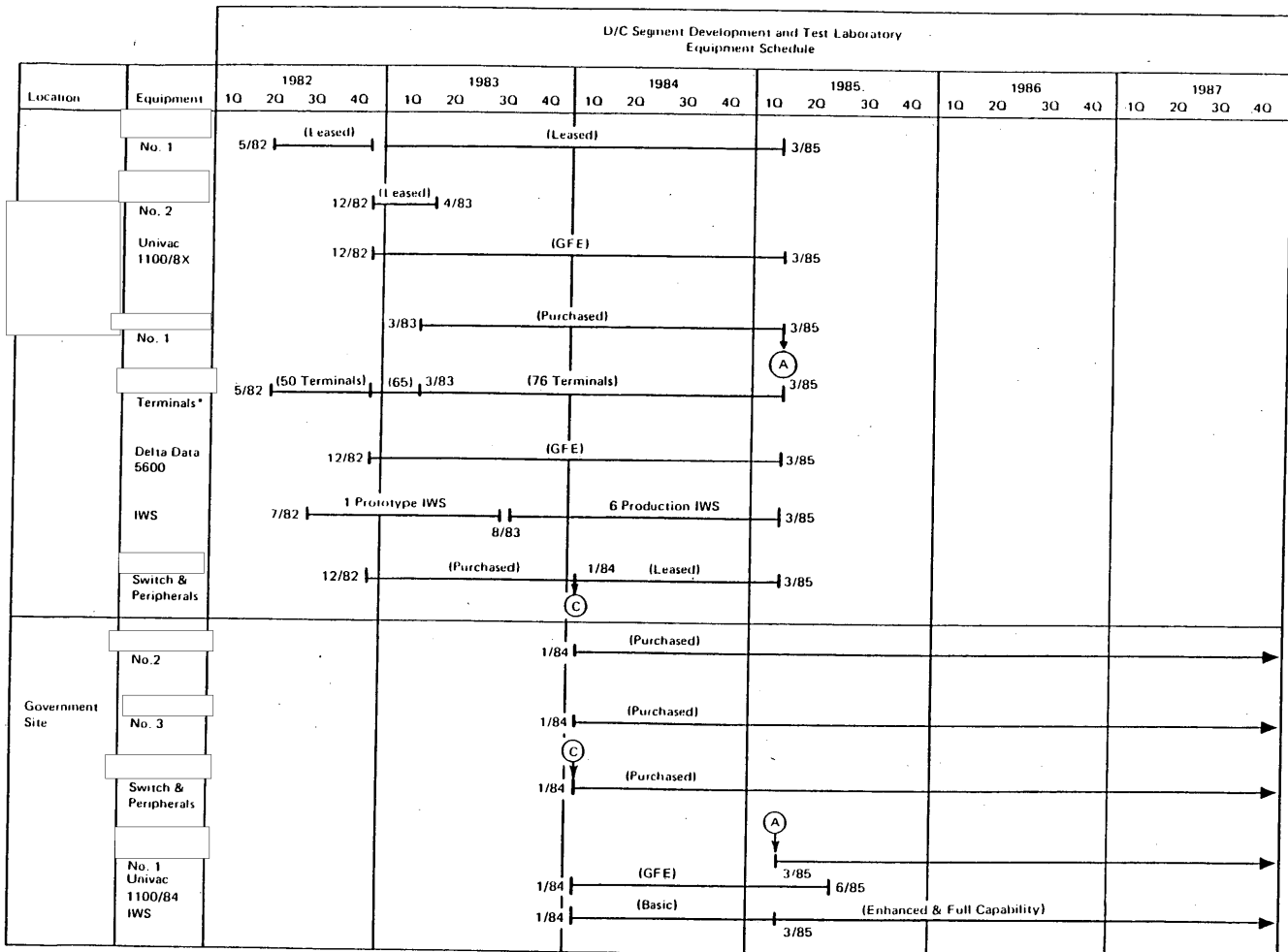


Figure 3. Option C Master Schedule (Sheet 1 of 2)



*Numbers are total number of terminals for the given time frame.

Figure 4. Equipment Phasing at Contractor's Facility and Government Facility

Option A

STAT

STAT

STAT

STAT

STAT

STAT

STAT

STAT

STAT

STAT

STAT

STAT

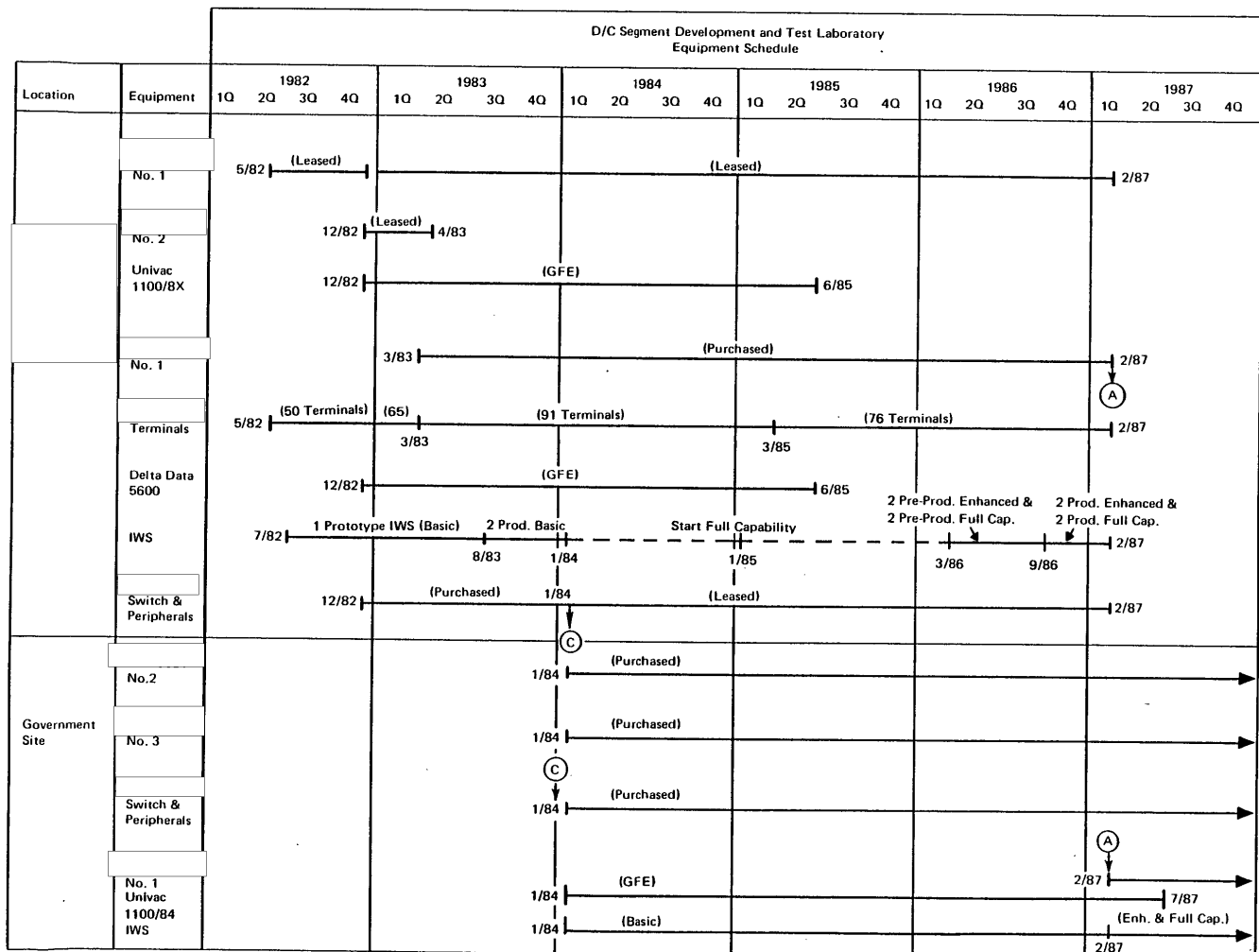


Figure 5. Equipment Phasing at Contractor's and Government Facilities
Option B

STAT
STAT
STAT
STAT
STAT
STAT
STAT
STAT
STAT
STAT

6

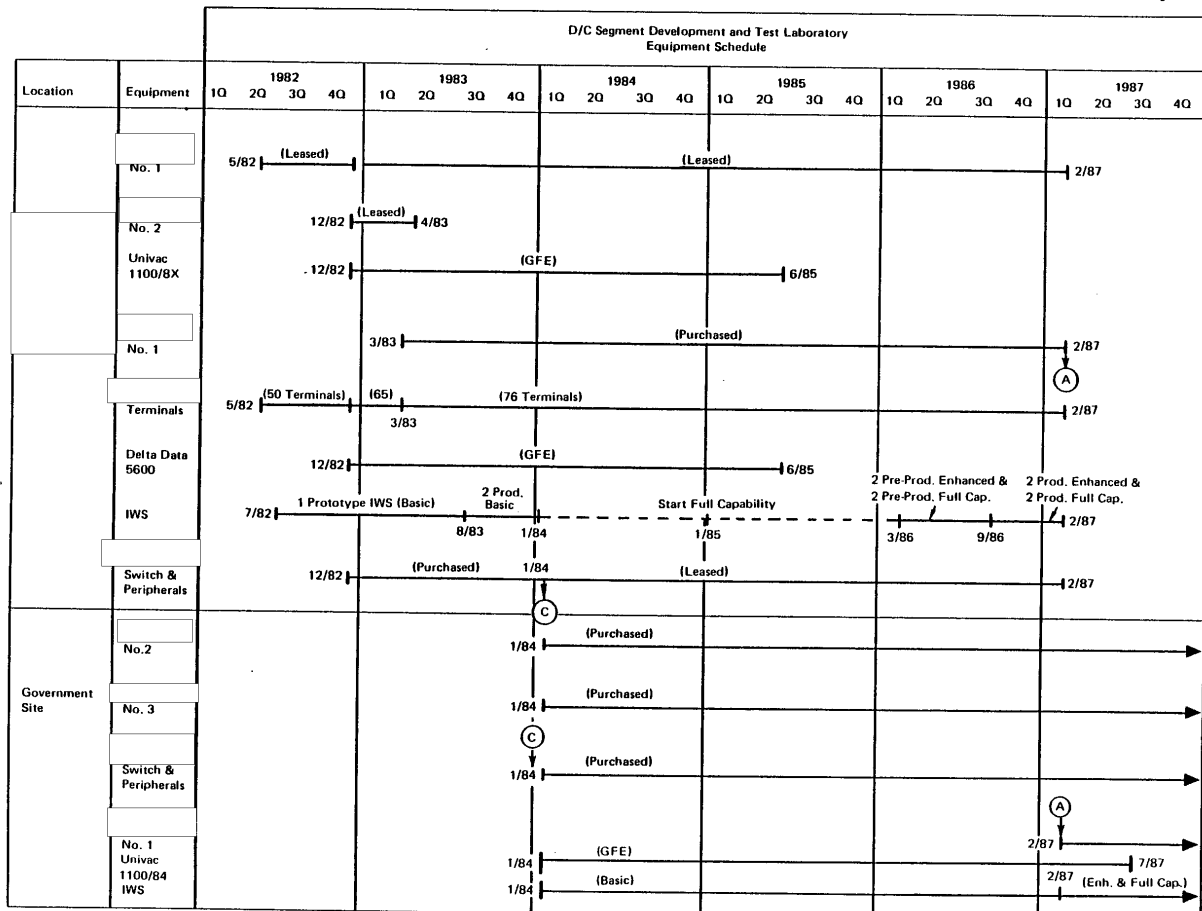


Figure 6. Equipment Phasing at Contractor's and Government Facilities

Option C

BOC PRICE

Approved For Release 2007/09/05 : CIA-RDP84T00037R000300010001-7

Page Denied

IOC PRICE

Approved For Release 2007/09/05 : CIA-RDP84T00037R000300010001-7

Page Denied

FOC PRICE

Approved For Release 2007/09/05 : CIA-RDP84T00037R000300010001-7

Page Denied

INTEGRATED WORK STATION
PRICE

Approved For Release 2007/09/05 : CIA-RDP84T00037R000300010001-7

Page Denied

ADPE PROCUREMENT
OPTIONS

APPENDIX C11

ADPE PROCUREMENT OPTIONS

1.0 Introduction

This section presents a comparative analysis of three ADPE procurement options, namely:

o Baseline Procurement Option (BPO)

Previously (February proposal) referred to as the "Recommended Procurement Option", this option involves the outright purchase of all ADPE destined for delivery to the Government's site. While this procurement option has the lowest overall cost, it requires significantly more dollar outlay in the first three program years.

o Alternate Payment Plan (APP)

Where, the hardware items being purchased are the same as for the BPO above, but the schedule for payment by the Government is agreed to under the terms, conditions and provisions of the contract.

o Lease Procurement Option (LPO)

Where, all ADPE procurements are leased at rates equivalent to those offered under the GSA ADP Contract. While this procurement option has the highest overall cost, it requires significantly less dollar outlay in the first three program years.

1.2 Criteria For The Optimal Procurement Approach

Efforts toward development of alternative approaches to ADPE procurement have been guided by three criteria:

1. That the approach yield the least overall program cost.
2. That the approach present an attractive affordability profile especially over the early years of the program.
3. That the approach taken to attain 1 and 2 in no way increase risk attendant to the performance of the program.

2.0 ADPE Cost By Procurement Option

Figure 1-1 summarizes the procurement options by categories of Purchase/Lease, Hardware Maintenance, and Software (License and Support) across hardware groups B, C, D, E, G, I, J and K. Price adjustments, as applicable, are shown for the following hardware group combinations:

<u>Hardware Group</u>	<u>Applicable to Procurement Option</u>		
	<u>Baseline</u>	<u>APP</u>	<u>Lease</u>
B&C	Yes	Yes	No
D&E&G	Yes	Yes	No
I&J	Yes	Yes	No
K	Yes	Yes	No

STAT

Interest accruals engendered by the APP options are shown as "Cost Deltas".

The option total for each of the procurement options in Figure 1-1 shows the Baseline option to be the overall cost followed by the APP option (14% more costly). The Lease Option¹ is 40% and 30% more costly than the Baseline and APP options, respectively. On the basis of the above stated criteria to develop and present the most cost effective procurement approach, the Lease option is disqualified as a viable alternative. Baseline and APP options thus remain as the procurement options of choice and are further compared below.

Figures 1-2 and 1-3 present cost by hardware group across fiscal years of the program for the Baseline and APP options, respectively. In terms of the above stated criteria to "present an attractive affordability profile especially over the early years of the program", attention is directed to the TOTAL and PERCENT OF TOTAL columns. Clearly, the APP option presents the most attractive affordability profile over the early years of the program.

¹Lease pricing is included here as a ROM comparison to Baseline and APP Options and does not represent a commitment

STAT



STAT

STAT

OPTION TOTAL	BASELINE			ALTERNATE PAYMENT PLAN			LEASE		
	EXTENDED PRICING		TOTAL ADJUSTED LIFE CYCLE	EXTENDED PRICING		TOTAL ADJUSTED	EXTENDED PRICING		TOTAL ADJUSTED
	HARDWARE	SOFTWARE		HARDWARE	SOFTWARE		HARDWARE	SOFTWARE	
	HARDWARE: PURCHASE, LEASE, MAINTENANCE		17810132			20670049			29577783
	SOFTWARE: LICENSE, SUPPORT		*****			*****			*****
	TRANSPORTATION								
	INSTALLATION								

UNCLASSIFIED

UNCLASSIFIED

Page Denied

Next 1 Page(s) In Document Denied