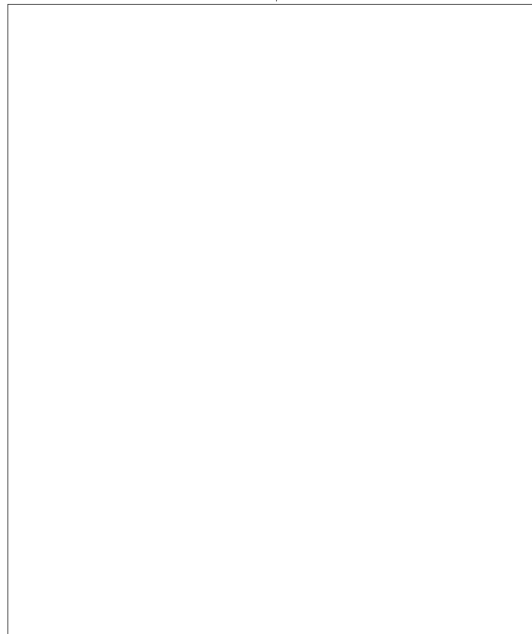


UNCLASSIFIED

10610

**NPIC DATA SYSTEM
DATA AND CONTROL SEGMENT
ACQUISITION PHASE**

**VOLUME VIII
COST PROPOSAL
QUESTIONS AND ANSWERS**



25X1

31 March 1982

UNCLASSIFIED

UNCLASSIFIED

NPIC DATA SYSTEM DATA AND CONTROL SEGMENT ACQUISITION PHASE

VOLUME VIII COST PROPOSAL QUESTIONS AND ANSWERS



25X1

31 March 1982

This data, furnished in connection with this solicitation, shall not be disclosed outside the Government and shall not be duplicated, used, or disclosed in whole or in part for any purpose other than to evaluate the proposal; provided, that if a contract is awarded to this offeror as a result of, or in connection with, the submission of this data, the government shall have the right to duplicate, use, or disclose the data if, and to the extent, it is so provided in the contract. This restriction does not limit the government's right to use information contained in the data if it is rightfully obtained from another source without restriction. The data subject to this restriction is contained in the pages appropriately marked.

The data in the pages of this proposal where so annotated contains trade secrets and commercial or financial information that are either specifically exempted from disclosure by statute or privileged or confidential within the meaning of the exemption that is set forth in Section 552 (b) (3) and (4), respectively, of the Freedom of Information Act, 5 U.S.C. 552, the disclosure of which could invoke the criminal sanctions of 18 U.S.C. 1905.



25X1



UNCLASSIFIED

25X1

UNCLASSIFIED

COST PROPOSAL

IV.1 *GFE Univac system software for SDL, Figure 3.7-2, Page IV.3-31 shows a GFE charge of \$284K. Page IV.5-3, paragraph d, shows licensed S/W as a contractor cost. Please clarify.*

Answer:

Cost of the Univac system software required for operation of the Univac 1100/81 in the SDL is included in our bid price. The GFE charge shown in Figure 3.7-2 (Page IV.3-31) was erroneously entered and has been removed from our March 31 GFE list.

UNCLASSIFIED

UNCLASSIFIED

IV.2 *Total LOCs from Table 5.5.2-2, page IV.5-11, 12, is 1,205,000 lines after correcting for errors in the Table. Paragraphs 6.4, 5, pages IV.6-3, 4 show a total of 859,000 LOCs. Tables 5.5.2-4 and 5.5.7-5, page IV.6-15, show a total of 927,000 LOCs for the BOC and IOC. Also, reference Figure 5.4.1-1, page II.5-28/29 in Volume II. Please clarify.*

Answer:

Figure 5.5.2-2 accurately reflects the basis of our February 24 bid. The confusion arose due to our use of the total KSLOC quantity shown for the CPCI's and we have clarified this with an explanatory note on the figure. We have also provided at the bottom of the figure a table of total KSLOC counts for all the CPCI's.

Paragraphs 6.4 - Software Development (BOC) and 6.5 - Software Development (IOC) which also reflected KSLOC estimates have been corrected as needed to match Figure 5.5.2-2.

Figures 5.5.2-4 and 5 show a total of 854,000 LOC's which are the new and modified counts of the BOC/IOC code from Figure 5.5.2-2 (635,000) plus the BOC/IOC counts of BOC/IOC converted code (219,000 LOC's).

UNCLASSIFIED

25X1

UNCLASSIFIED

Applying these data to the code count estimates, man month estimates and resultant aggregate productivities per CPI were derived and are tabulated in Figure 5.5.2-2.

		KSLOCs			MM			PRODUCTIVITY		
		N&M	R&C*	Total	N&M	R&C	Total	N&M	R&C	Total
Pre-Exploitation	- BOC	103	28	131	358	14	372	288	2000	352
BEPPRE	- IOC	1	7	8	5	4	9	200	1750	888
	- Total	104	35	128**	363	18	381	287	1944	336
Exploitation Mgmt	- BOC	67	26	93	208	5	213	322	5200	437
BEMGMT	- IOC	14	32	46	51	16	67	275	2600	687
	- Total	81	58	76**	259	21	280	313	2760	271
Exploitation Spt	- BOC	31	133	164	82	30	112	378	4400	1460
BEXSUP	- IOC	48	2	50	201	1	202	239	1750	248
	- Total	79	135	50**	283	31	314	279	4350	159
Exploitation Results	- BOC	7	21	28	19	5	24	268	4200	1170
BERESU	- IOC	0	21	21		6	6		3500	3500
	- Total	7	42	21**	19	11	30	268	3800	700
Data Manipulation	- BOC	21	88	109	54	20	74	389	4400	1470
BMANIP	- IOC	6	80	86	18	42	60	333	1900	1430
	- Total	27	168	86**	72	62	134	375	2700	642
Statistics Reporting	- BOC	7	23	30	22	5	27	318	4600	1100
BSTATR	- IOC	2	18	20	5	10	15	400	1800	1330
	- Total	9	41	20**	27	15	42	333	2700	475

*IOC and FOC estimates in the R&C column show counts of converted code but omit retained code counts.

**Total KSLOC quantities listed are the installed KSLOC's at FOC.

Figure 5.5.2-2 (1 of 3)

UNCLASSIFIED

		KSLOCs			MM			PRODUCTIVITY		
		N&M	R&C*	Total	N&M	R&C	Total	N&M	R&C	Total
Materials Mgmt	- BOC	0	15	15		6	6		2500	2500
BMMGMT	- IOC	1	8	9	4	4	8	250	2000	1120
	- FOC	7	0	7	30		30	233		233
	- Total	8	23	16**	34	10	44	235	2300	364
Command and Control	- BOC	4	0	4	18		18	222		222
BCCNTR	- IOC	20	0	20	87		87	230		230
	- FOC	12	0	12	50		50	240		240
	- Total	36	0	36**	155		155	232		232
Query Spt	- BOC	3	40	43	12	14	26	250	2850	1650
BQUERY	- IOC	16	23	39	71	12	83	225	1900	470
	- Total	19	63	39**	83	26	109	229	2400	358
Host Appl Spt	- BOC	22	50	72	71	12	83	239	4250	819
BAPPLS	- IOC	24	0	24		16	16		1800	1810
	- Total	46	50	24**	71	28	99	239	2850	293
DBM Appl Spt	- BOC	11	0	11	41		41	268		268
BDMAPS	- IOC	8	0	8	33		33	242		242
	- Total	19	0	16**	74		74	257		216
Test and Training Spt	- BOC	35	6	41	121	2	123	289	3000	333
BTTDEV	- IOC	8	5	13	27	1	28	296	5000	464
	- FOC	5	0	5	17		17	294		294
	- Total	48	11	48**	165	3	168	291	3700	286

Figure 5.5.2-2 (2 of 3)

UNCLASSIFIED

UNCLASSIFIED

		KSLOCs			MM			PRODUCTIVITY		
		N&M	R&C*	Total	N&M	R&C	Total	N&M	R&C	Total
WS Application	- BOC	35	0	35	172		172	203		203
	WAPPLS	- IOC	141	0	141	540		540	261	261
	- Total	176	0	176**	712		712	247		247
All CPCI's	- BOC	346	430	776						
	- IOC	289	196	485						
	- FOC	24	0	24						
	- Total	659	626	735						

Figure 5.5.2-2 (3 of 3)



UNCLASSIFIED

UNCLASSIFIEDCost Substantiation Data for
CPCI Test and VerificationBOC Phase

CPCI	N, M, &C* KSLOC	MM EST	PEAK MANPOWER	WBS LEVEL 3
BEPPRE	126	74.1	6.5	343200
BEMGMT	67	43.8	4.6	343201
BERESU	7	3.8	1.4	343202
BMANIP	21	11.3	1.3	343204
BSTATR	7	4.4	1.0	343205
BCCNTR	4	2.7	0.5	343208
BQUERY	3	1.2	0.2	343209
BAPPLS	22	10.2	1.5	343210
BDMAPS	11	7.3	0.6	343211
BTTDEV	35	23.3	2.5	343212
WAPPLS	35	33.3	3.5	343213
BEXSUP	<u>31</u>	<u>16.3</u>	2.3	343214
TOTALS	369	231.7		

Figure 5.5.2-4

IOC Phase

CPCI	KSLOC	MM EST	PEAK MANPOWER	WBS LEVEL 3
BEPPRE	8	2.6	1.1	344200
BEMGMT	46	18.4	2.0	344201
BMANIP	86	26.8	3.0	344203
BERESU	21	6.0	2.0	344202
BSTATR	20	6.4	1.2	344204
BMMGMT	9	2.9	0.6	344206
BCCNTR	20	13.3	2.0	344207
BQUERY	39	17.2	2.7	344208
BAPPLS	24	20.1	2.8	344209
BDMAPS	8	5.3	0.5	344210
BTTDEV	13	6.7	1.0	344211
WAPPLS	141	120.8	9.0	344212
BEXSUP	<u>50</u>	<u>32.6</u>	2.8	344213
TOTALS	485	279.1		

Figure 5.5.2-5

*KSLOC's for estimating test and verification efforts include new, modified and converted code (not retained code) and hence will differ from the KSLOC totals of Figure 5.5.2-2.

UNCLASSIFIED

UNCLASSIFIED

Cost Substantiation Data for
CPCI Test and Verficiation

CPCI	KSLOC	<u>FOC Phase</u> MM EST	PEAK MANPOWER	WBS LEVEL 3
BMMGMT	7	7.6	1.4	345200
BCCNTR	12	8.0	1.6	345201
BTTDEV	<u>5</u>	<u>3.3</u>	1.0	354202
TOTALS	24	18.9		

Figure 5.5.2-6



UNCLASSIFIED

UNCLASSIFIED

Cost Factors: In total, 1,000 analyst positions are equipped with the new IWS capabilities. Three types of work stations and their proposed costs are indicated in the table below:

IWS Type	Qty	Unit Cost (1,000s)		25X1
Basic	360	\$ 8.0		
Enhanced	140	15.2		
Full Capability	500	36.7		
Total	1,000	-		

6.4 Cost Driver: Software Development BOC

Software development effort leading to BOC will produce a total of 346,000 new and modified source lines at code (SLOC's) and 23,000 converted SLOC's.

25X1

GWBS Reference: 4.3 Software Development BOC

Technical Proposal Reference: 5.4 Software
 5.5 Data Base
 5.8 Integrated Work Station

Management Proposal Reference: 5.3 Software Development Plan

Cost Factors:	Size (KSLOC's)		25X1
New and Modified Code	346		
Converted Code	23		

6.5 Cost Driver: Software Development IOC

Software development effort leading to IOC will produce a total of 289,000 new and modified source lines of code (SLOC's) and 196,000 SLOC's of converted code.

25X1

GWBS Reference: 4.4 Software Development IOC

UNCLASSIFIED

25X1

UNCLASSIFIED

Technical Proposal Reference: 5.4 Software
5.5 Data Base
5.8 Integrated Work Station

Management Proposal Reference: 5.3 Software Development Plan

Cost Factors:

	Size (KSLOC's)		25X1
New and Modified Code	289		
Converted Code	196		

6.6 Cost Driver: Development and Test Facility

The Development and Test Facility at the will consist of three host CPU's with peripherals and approximately 90 terminals for development. Facility operations during peak development and test periods are planned and costed for three shift, seven day per week operations. 25X1

25X1

GWBS Reference: 4.16 Development and Test Facility

Technical Proposal Reference: None

Management Proposal Reference: 5.3 Software Development Plan
5.5 Verification and Test Plan

Cost Factors:

Lease and Maintenance of Host Configurations and Software Products		25X1
Facility Labor		

6.7 Cost Driver: Operations and Maintenance IOC and FOC

Operations and maintenance by the contractor following completion of D/C Segment IOC and extending through July, 1988, will include (1) level-of-effort labor for hardware and software maintenance; (2) purchased commercial hardware maintenance; and (3) purchased commercial software licensing and software service charges.

UNCLASSIFIED 25X1

UNCLASSIFIED

IV.3 *Where are the costs for IWS spares? If this is a GFE item, please supply cost.*

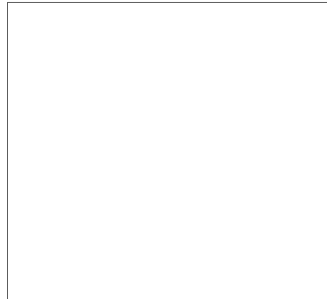
Answer:

We have defined and priced in our baseline and option bids for BAFO an initial spares program through FOC. Spares pricing has been based on MTBF historical data which yields an annual spares estimate of 4 percent of acquisition price for the Burroughs B20 equipment and an annual spares estimate of 7 percent of acquisition price for the Aydin equipment.

The initial IWS spares costs through 1987 FOC included in our bids are as follows:

Bid

Baseline
Option A
Option B
Option C



25X1

After FOC, experience will dictate what sparing is required. Our ROM estimate for post-FOC IWS spares is \$1.3 million annually.



UNCLASSIFIED

IV.4 *Identify specifically where the maintenance costs for the
SDL H/W are.*

Answer:

The maintenance costs for SDL commercial hardware are included in WBS element 541640, Operations and Maintenance for the Development and Test Facility of SDL.

UNCLASSIFIED

Page Denied

UNCLASSIFIED

IV.6 *O&M S/W Maintenance Personnel (Appendix C2, page 146) - two people (one contractor, one Government) between BOC and IOC and four people after IOC seems very low for the amount of S/W that will be maintained. Page IV.5-2 describes an O&M contingent of up to 14 (or 28?) system programmers and up to 3 (or 6?) personnel for IWS maintenance. Please discuss the O&M area in greater detail.*

Answer:

A. O&M S/W Maintenance Personnel (Appendix C2, page 146) - Two people (one contractor, one Government) between BOC and IOC and four people after IOC seems very low for the amount of S/W that will be maintained.

During BOC, 1 [] programmer will be dedicated to IWS software maintenance. IOC and FOC will also require 1 [] programmer for IWS software maintenance. During all phases of the IWS development effort, the software development personnel will also serve as maintenance programmers on call as needed basis to the O&M maintenance programmers. This approach to IWS S/W maintenance is very practical and cost effective due to our closeness to the NPIC operations site.

25X1

25X1

B. Page IV.5-2 describes an O&M contingent of up to 14 (or 28?) system programmers and up to 3 (or 6?) personnel for IWS maintenance.

Our total O&M maintenance requirements for BOC are 15 [] personnel. During IOC and FOC [] personnel will be required for total O&M maintenance. Out of these totals [] [] (2 S/W and 11 H/W) maintainers will be dedicated to the IWS O&M maintenance during BOC. IOC and FOC will require 5 [] (2 S/W and 12 H/W) maintainers for IWS O&M maintenance.

25X1

25X1

25X1

25X1

25X1

UNCLASSIFIED

25X1



UNCLASSIFIED

C. Please discuss the O&M area in greater detail.

After acceptance of each D/C Segment delivery [] will share on-site hardware/software maintenance support. On-site H/W maintenance support will be limited to the IWS. The [] ADPE equipment will be serviced by the [] Customer Engineers who are presently servicing [] equipment at the site and this maintenance team will be expanded as appropriate as the new [] equipment is installed.

25X1

25X1

25X1

25X1

[] will each initially provide 50% of the personnel for S/W maintenance. Over the O&M period, [] participation will increase towards ultimately taking total responsibility. Figure 6-1 illustrates the numbers of [] personnel required during the O&M period.

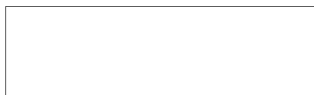
25X1

25X1

25X1

UNCLASSIFIED

25X1



UNCLASSIFIED

	BOC				IOC/FOC				
	H/W	S/W	H/W	S/W	H/W	S/W	H/W	S/W	
<input type="checkbox"/>	CE	11	N/A	5	CE	12	N/A	10	25X1
HOST	UNDER				UNDER				
O&M	LEASE				LEASE				
	AGREE				AGREE				
IWS	3	1	8	1	4	1	8	1	
Totals	3	12	8	6	4	13	8	11	

Figure 6-1

UNCLASSIFIED

25X1

UNCLASSIFIED

IV.7 *NDS program source and object code listings, user's manuals and operations manuals are complete and up to date. CPCI Part I and Part II documents exist but have not been maintained since about 1977. You have reviewed our documentation. Please verify that your proposal takes the existing NDS documentation deficiencies into account.*

Answer:

NDS CPCI Part I and Part II specifications were requested GFE (Cost Prop Fig. 3.7-2) on CPCIs for which we do not have copies. This request should also include the cost of updating the specifications we now have to reflect the current system. The advantage of this activity is realized by the fact that our BOC proposed system will contain a significant amount of retained software supporting existing functions and additional converted and slightly modified software from the current system. This documentation will permit us to increase our proficiency on the existing software.


UNCLASSIFIED

UNCLASSIFIED

IV.8 *Your analysis for subcontractor costs is considerably less than the subcontractors proposed. Have the revised costs been agreed to by the subcontractors? Discuss the probability that the revised costs will be met.*

Answer:

Our February 24 bid to the Government reflected an aggregate subcontractor bid price which was approximately [] less than their bids to us at that point in time. Our bid price included a carefully-derived, bottoms-up "should cost" estimate for each subcontractor, at Level 6 of the WBS. After proposal submittal, we worked with each subcontractor to clarify task responsibilities and development methodology. This process has reduced the [] aggregate difference to approximately [] as reflected in our BAFO submittal. We are about to begin detailed fact-finding and negotiations, and we expect to reach agreement at our bid position.

25X1

25X1

25X1



UNCLASSIFIED

IV.9 Volume IV, pages 3-21, 3-28, have inconsistencies in WBS elements 4.8, 4.9. Volume IV, pages 3-21, 6-5, have inconsistencies in WBS element 4.18. Please clarify.

The accumulation of costs in this area was a result of the factoring of subcontract type activity. The amount to be used for analytical purposes is the figure reflected in Exhibit 1 (page 3-21). The amount to be used for analysis of WBS element 4.18 is the amount reflected in Exhibit 1 (page 3-21).

UNCLASSIFIED

UNCLASSIFIED

IV.10 *Volume IV, Section 9 (per RFP Amendment 1) is missing.
Please provide.*

Answer:

Section 9, O&M Costs, has been incorporated into the March 31, 1982 updated Cost Proposal per Amendment 1.

UNCLASSIFIED

UNCLASSIFIED

IV.11 *It appears as though SDC is purchasing the Full Capability IWS (Appendix C-10, page 274). Why is this purchase in this element (448222)? Who are they being purchased from?*

Answer:

1. The Full Capability IWS is comprised of two major subsystems; the Alpha Numeric (A/N) display and the Imagery display. The A/N display is being purchased from the Burroughs Corporation and is its model B-20 with TEMPEST qualification. The Imagery display is being purchased from the [] [] and is the [] model 5216 - modified. The modifications include the TEMPEST qualification of a data entry device (trackball, mouse, or joystick) and other minor modifications to reduce its production cost. SDC will integrate the two subsystems into the Full Capability IWS.
2. Why is this purchase in this element WBS #448222?

25X1
25X1

Answer: Procurement of the Full Capability IWS hardware was erroneously budgeted in WBS #448222. It should have been budgeted in WBS # 448232, Development.

[] UNCLASSIFIED

25X1

UNCLASSIFIED

IV.12 Reference cover letter dated February 24, 1982 - Assumption #2 (Attached). Please identify specific TBR's/TBD's referred to in Assumption 2 as well as specific cost/schedule assumptions. Please reference the specific WBS elements in Appendices C-1 and C-10 where the costs are included.

25X1

Answer:

Proposal Assumption #2 refers to all TBR/TBD issues in the RFP. We have included in our proposal adequate cost and sufficient development schedule to implement the resolution of all TBR/TBD issues provided such resolution is within ranges and assumptions cited throughout the proposal. We have taken a position in the proposal on all TBD/TBR issues in terms of ranges and assumptions. Costs for resolution of TBR/TBD issues have not been segregated in our development of cost information, but rather have been taken into consideration in the basic overall cost estimating procedures for each task activity assuming that all TBR/TBD issues would be resolved within the prescribed ranges and assumptions.

UNCLASSIFIED

25X1

Page Denied

UNCLASSIFIED

IV.14 *How are the SDL terminals acquired? What happens to them after the main frame (3081) is moved to NPIC?*

Answer;

Twenty-six of the 3278-2 terminals will be purchased for the initial Software Development Laboratory (SDL) configuration (on 5/82) and 24 3278-2 terminals will be leased. More leased terminals will be added to the development laboratory after 12/82 as the development effort terminal requirements grow. The 26 purchased 3278's will be transferred to site for BOC (1/84) and will be replaced by leased terminals.

25X1

The SDL IWS terminals will be purchased by the Government under the NDS contract while the Delta Data 5600 terminals will be GFE The IWS terminals at the SDL will be installed at site when the SDL is disbanded. The Delta Data 5600's will be returned to the Government upon removal of the Univac 1100/8X from the SDL.

25X1

UNCLASSIFIED

25X1

UNCLASSIFIED

IV.15 *What is included in the 4.1.8 PM-Documentation manhours?*

Answer:

This is technical publications department effort to prepare and publish all briefing materials and all deliverable CDRL documents. Effort includes drafting, photographic work and all printing and binding.

UNCLASSIFIED

UNCLASSIFIED

IV.16 *Please provide total indirect manhours by WBS-2 (use Exhibit 5 format) summing all contractors. Provide supporting narrative explaining what each element includes.*

Answer:

Our overhead is allocated on the basis of direct hours incurred on the contract and cannot be readily identified with a specific product or contract. These overhead expenses include accounting and financial services, personnel administration, normal office functions, general administration and such items as light, heat, power, taxes and employee benefits.

Indirect subcontractor data is considered proprietary by the subcontractors and is available for audit by a cognizant agent of DCAA.

UNCLASSIFIED

UNCLASSIFIED

IV.17 *Appendix C1 is apparently missing data. For example, WBS elements 542402, 542501, 542502. Appendices C2 and C3 are apparently missing data which are costed in C1, for example, WBS elements 541402, 541820, 541830, 541831. Please review Appendices C1, C2, C3, C10 and provide the missing data.*

Answer:

Our review of Appendix C1 indicates that all man-hour data corresponding to our basic bid was complete at the February 24 submittal but was not matched to the WBS Index sequence. Our updated submittal of March 24, 1982 provided Appendix C1 properly sequenced with the WBS Index and tabbed in level 2 categories for quicker reference.

Appendix C2 (WBS Index) has been maintained in its original sequence which matches the Government Work Breakdown Structure. Appendix C2 submitted March 24 is a marked up version edited to bring it into correspondence with Appendix C1. As now edited, it reflects the correct level 5 WBS elements for our March 31 BAFO bid package. Adjustments are of four types:

- (1) Some level 5 WBS elements which were erroneously omitted, have been added.
- (2) Some level 5 (and level 6) WBS elements have been marked reserved where it was determined that they were not required for the basic bid; no Appendix C1 data sheets exist for these.
- (3) In a few instances, costs intended to go into one level 5 element were erroneously budgeted in another WBS element. These instances are appropriately identified.
- (4) In a few instances, a level 5 WBS element contains only purchase, computer, or travel cost and no labor costs. These instances are not annotated in the Index; no Appendix C1 data sheets exist for these.

UNCLASSIFIED

UNCLASSIFIED

Appendix C10 has been reviewed and accurately reflects our March 31 bid package.

Revised versions of Appendices C1 and C2 are included with our March 31, 1982 Best and Final packages.

 **UNCLASSIFIED**

UNCLASSIFIED

IV.18 *Please provide an index in WBS order showing what page each WBS element is on for Appendix C1 and C10 (not required for the computer listing of C10).*

Answer:

As described in the response for question 17, we have re-ordered the Appendix C1 data sheets to exactly sequence with the Appendix C2 WBS Index. The Index, in the column titled WBS Code Number, provides the level 5 element number which in turn appears on each data sheet of Appendix C1.

UNCLASSIFIED

UNCLASSIFIED

IV.19 *Why is there no labor required for SDL management 4.16.1?*

Answer:

The SDL management labor was erroneously budgeted in WBS element 541640, SDL Operations and Maintenance, in our February 24 submittal. For the BAFO bid, this management labor has been budgeted in its appropriate place, WBS element 541610. Detailed WBS level 5 data is included in our revised Appendix C1.

UNCLASSIFIED

UNCLASSIFIED

IV.20 *What is included in the SDL O&M manhours, 4.16.4?*

Answer:

Included in the SDL O&M manhours are the following skill categories which operate and maintain the development and test facility:

Manager
System Engineer
System Programmer
Computer Operator
Clerk-Librarian

The attached figure aids in understanding the manpower levels we have provided in each category in our BAFO bid.

UNCLASSIFIED

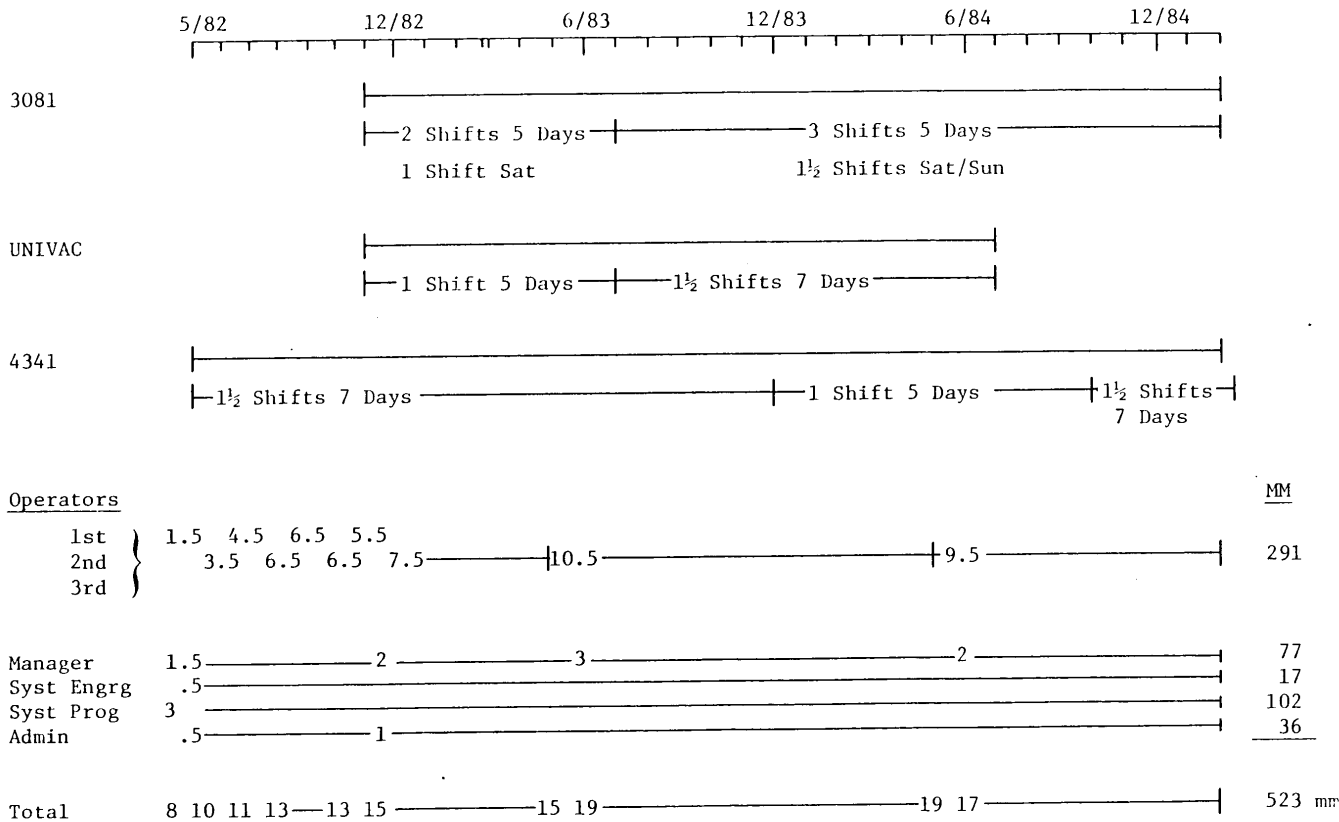


Figure 6. Development & Test Facility
Labor WP# 341640

Attachment to Cost Question 20

UNCLASSIFIED

UNCLASSIFIED

UNCLASSIFIED

IV.21 *Please provide C-1, C-10 data for CPCI BEPPRE (4.3.2.0 and 4.4.2.0).*

Answer:

This data is attached hereto and is now incorporated in the revised Appendices C-1 and C-10.



UNCLASSIFIED

Page Denied

Next 16 Page(s) In Document Denied

UNCLASSIFIED

IV.22 *Please explain why you recommend purchase rather than alternate payment plan for the ADPE procurement?*

Answer:

The Basic Bid reflects our lowest cost approach for meeting SAP technical objectives. An alternate payment plan for ADPE incurs additional interest expense and, for that reason, was not included.

For each of our proposed options, the objective is to reduce development costs through FY '85. In support of that, we have included a five-year alternate payment plan in each. Again, in an effort to minimize total program cost, we have reflected the final payment of all ADPE in FY '86. The Government, of course, has the option to continue the five-year plan beyond FY '86, incurring additional interest charges.

UNCLASSIFIED

UNCLASSIFIED

IV.23 *As a further enhancement of our security measures for the protection of highly sensitive information, the Government has initiated a voluntary program in industry which provides for the polygraph interview of contractor personnel who will require access to such information. The polygraph coverage under this program is limited to counterintelligence issues. Please indicate your willingness or unwillingness to participate in this Industrial Contractor's Polygraph Program (ICPP).*

Answer:

Will Participate _____ Yes _____

Will Not Participate _____

UNCLASSIFIED



UNCLASSIFIED

IV.24 *Please provide cost and price deltas to run the SDL through
FY-88.*

Answer:

A ROM to run the SDL through FY88 would be

25X1

UNCLASSIFIED

25X1

UNCLASSIFIED

IV.25 *Do you propose to continue the CWBS used in C-1 and C-10 for the duration of SAP?*

Answer:

Yes, with simplification to reduce the number of work packages. The revised CWBS will be reviewed with NDPO to ensure desired Government visibility.

 UNCLASSIFIED

UNCLASSIFIED

IV.26 Please provide a chart of all Univac and computers needed per your basic proposal at both your factory and our facility in the following format:

25X1

CY BY MONTH

CONTRACTOR
FACILITY

GOVERNMENT
FACILITY

Any computer which moves from one facility to another should be so indicated. Number each entry on the above graph and provide associated schedule and cost data in the following format:

Entry #: For each unit in that configuration by model number: number of units, unit purchase price, unit lease price, number of months leased, total unit lease price, maintenance price, software lease price, total life cycle unit costs exclusive of operators and consumables.

Entry #: Total hardware cost, total software lease price, total maintenance cost and total life cycle cost exclusive of operator and consumable costs.

- A. Provide the above information for your basic proposal Volume 5 configuration.
- B. Provide the above information for your revised proposal Volumes 4, and 5 if different from your basic proposal.

Answer:

Summary and detailed data in response to part A of the question are contained in Figures XXVI-1 through XXVI-17, and 26-VI through 26-V5.

Summary and detailed data in response to part B are contained in Figures XXVI BC-1 through XXVI BC-4.

UNCLASSIFIED

25X1

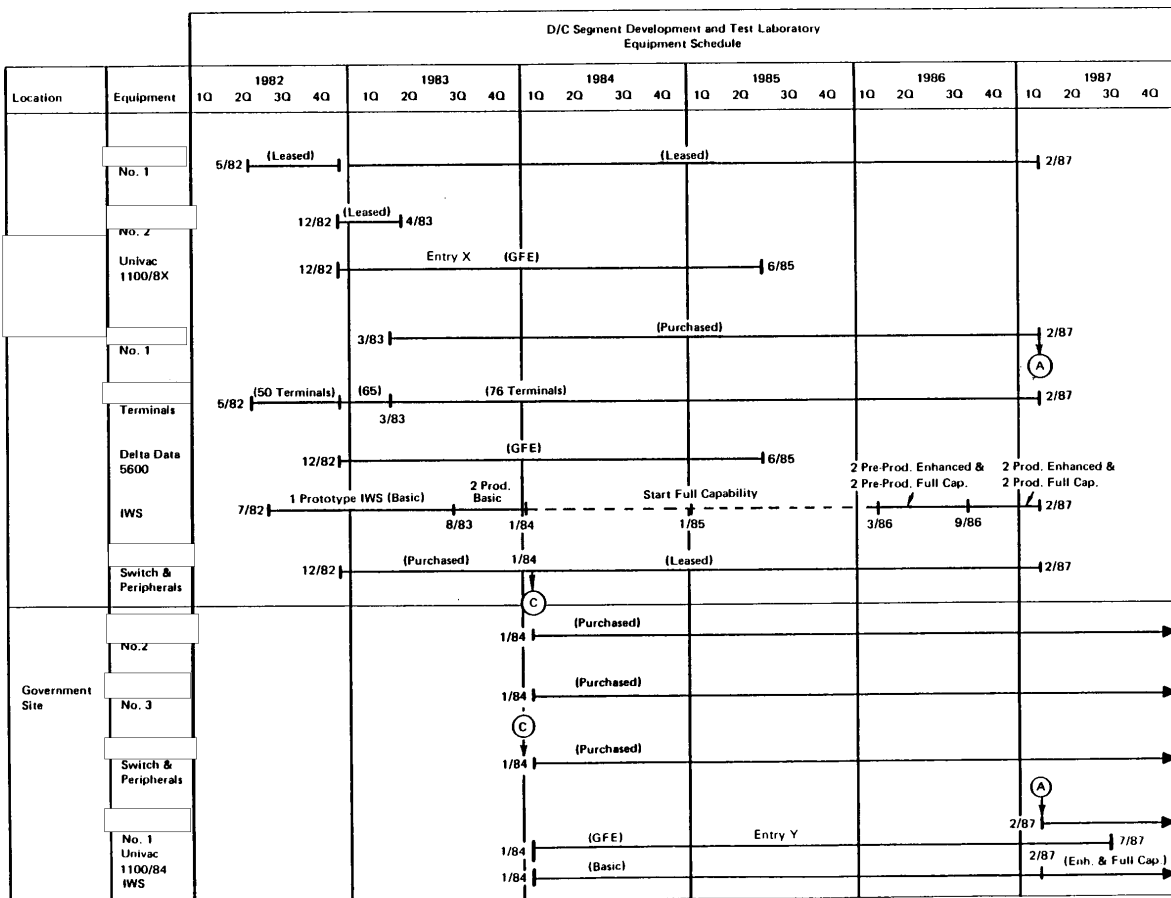


Figure XXVI-1. Equipment Phasing at Contractor and Government Facilities

UNCLASSIFIED

UNCLASSIFIED

25X1
25X1
25X1
25X1
25X1
25X1
25X1
25X1
25X1
25X1

55

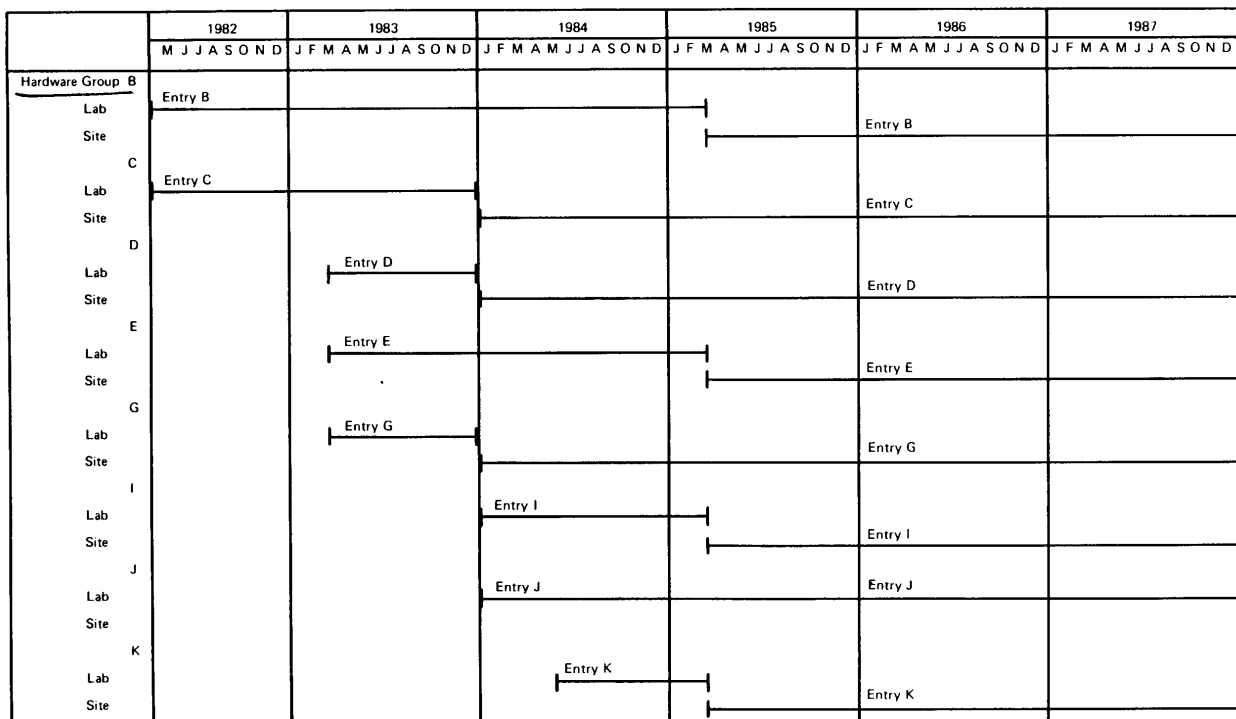


Figure XXVI-2. Computer Phasing at Contractor and Government Facilities - Baseline and Option A

UNCLASSIFIED

UNCLASSIFIED

Page Denied

Next 16 Page(s) In Document Denied

25X1

4341 PROCESSORS AND PERIPHERALS

FY	<u>82</u>	<u>83</u>	<u>84</u>	<u>85</u>	<u>86</u>	<u>87</u>	<u>88</u>	<u>TOTAL</u>
	56495	161338	439066	299754	-	-	-	949739

Equipment in this group is priced at internal lease rates which typically yield a discount of 60% on commercial pricing.

Lease data is summarized by fiscal year above. Detailed unit pricing at internal rates was unavailable at time of proposal publication.

Figure 26-14. (1 of 2) ADPE Cost Summary Lease of Hardware Groups A, F, H and L for Laboratory (Revised Proposal)

25X1

UNCLASSIFIED

UNCLASSIFIED

UNCLASSIFIED

Figure 26-14 (2 of 2) Revised Proposal

Type/Feature #	Description	Quantity	Time
4341-M02	Processor-8M	1	8205-8503
3278-002	Display Station	24	8205-8503
3278-A02	Display Console	1	8205-8503
3278-002	Display Station	26	8301-8503
3705-J04	Comm. Controller	1	8401-8503
3203-005	Printer	3	8401-8503
1416-001	Interch Train Cart.	3	8401-8503
3814-A03	Switch Mgt. Sys. Contr.	2	8401-8503
3880-D13	Storage Control	1	8401-8503
3380-AA4	DASD	8	8401-8503
3803-002	Tape Control	3	8401-8503
3420-008	Magnetic Tape Unit	8	8401-8503
3274-D21	D21 Control Unit	2	8401-8503
3274-D21	D21 Control Unit	1	8401-8503
3278-002	Display Station	28	8401-8503
3287-001	Printer	11	8401-8503
3350-A02	Disk Storage & CTL	2	8401-8503
3350-B02	Disk Storage	2	8401-8503
3880-003	Storage Control	2	8401-8503
3880-AA4	DASD	4	8401-8503
3278-A02	Display Console	1	8401-8503
3705-J04	Comm. Controller	2	8406-8503
4341-P02	Processor	1	8212-8304
3278-002	Display Stations	5	8212-8304
3278-A02	Display Console	1	8212-8304

UNCLASSIFIED

25X1

4341 PROCESSORS AND PERIPHERALS

FY	<u>82</u>	<u>83</u>	<u>84</u>	<u>85</u>	<u>86</u>	<u>87</u>	<u>TOTAL</u>
	51495	210616	454827	790832	643985	269160	2420915

Equipment in this group is priced at internal lease rates which typically yield a discount of 60% on commercial pricing. Lease data is summarized by fiscal year above. Detailed unit pricing at internal rates was unavailable at time of proposal publication.

Figure 26-15. (1 of 3) ADPE Cost Summary Lease of
Hardware Groups A, F, H and L for
Laboratory (Option A)

25X1

UNCLASSIFIED

76

UNCLASSIFIED

UNCLASSIFIED

Figure 26-15 (2 of 3)
Option A

Type/Feature #	Description	Quantity	Time
4341-M02	Processor-8M	1	8205-8503
3278-002	Display Station	24	8205-8503
3278-A02	Display Console	1	8205-8503
3278-002	Display Station	26	8301-8503
3705-J04	Comm. Controller	1	8401-8503
3203-005	Printer	3	8401-8503
1416-001	Interch Train Cart.	3	8401-8503
3814-A03	Switch Mgt. Sys. Contr.	2	8401-8503
3880-D13	Storage Control	1	8401-8503
3380-AA4	DASD	8	8401-8503
3803-002	Tape Control	3	8401-8503
3420-008	Magnetic Tape Unit	8	8401-8503
3274-D21	D21 Control Unit	2	8401-8503
3274-D21	D21 Control Unit	1	8401-8503
3278-002	Display Station	28	8401-8503
3287-001	Printer	11	8401-8503
3350-A02	Disk Storage & CTL	2	8401-8503
3350-B02	Disk Storage	2	8401-8503
3880-003	Storage Control	2	8401-8503
3880-AA4	DASD	4	8401-8503
3278-A02	Display Console	1	8401-8503
3705-J04	Comm. Controller	2	8406-8503

UNCLASSIFIED

UNCLASSIFIED

Figure 26-15 (3 of 3)
Option A

Type/Feature #	Description	Quantity	Time
4341-P02	Processor	1	8212-8304
3278-002	Display Station	5	8212-8304
3278-A02	Display Console	1	8212-8304
4341-P02	Processor	2	8503-8702
3278-002	Display Station	50	8503-8702
3278-A02	Display Console	2	8503-8702
3287-001	Printer	4	8503-8702
3880-D11	Storage Control	2	8503-8702
3350-A02	Disk Storage CTL	4	8503-8702
3880-003	Storage Control	1	8503-8702
3380-AA4	DASD	4	8503-8702
3380-B04	DASD	2	8503-8702
3803-002	Tape Control	4	8503-8702
3420-008	Mag. Tape Unit	12	8503-8702
3203-005	Printer	4	8503-8702
1416-001	Interch Train Cart.	4	8503-8702
3350-B02	Disk Storage	2	8503-8702
3274-D21	Control Unit	2	8503-8702
3705-J04	Comm. Controller	2	8503-8702
3278-002	Display Station	30	8303-8503

25X1

4341 PROCESSORS AND PERIPHERALS

FY	<u>82</u>	<u>83</u>	<u>84</u>	<u>85</u>	<u>86</u>	<u>87</u>	<u>TOTAL</u>
	56495	201951	446218	781098	686988	271412	2444162

Equipment in this group is priced at internal lease rates which typically yield a discount of 60% on commercial pricing.

Lease data is summarized by fiscal year above. Detailed unit pricing at internal rates was unavailable at time of proposal publication.

Figure 26-16 (1 of 3) ADPE Cost Summary Lease of Hardware Groups A, F, H and L for Laboratory (Option B)

25X1

UNCLASSIFIED

UNCLASSIFIED

UNCLASSIFIED

Figure 26-16 (2 of 3)

Option B

Type/Feature #	Description	Quantity	Time
4341-M02	Processor-8M	1	8205-8503
3278-002	Display Station	24	8205-8503
3278-A02	Display Console	1	8205-8503
3278-002	Display Station	26	8301-8503
3705-J04	Comm. Controller	1	8401-8503
3203-005	Printer	3	8401-8503
1416-001	Interch Train Cart.	3	8401-8503
3814-A03	Switch Mgt. Sys. Contr.	2	8401-8503
3880-D13	Storage Control	1	8401-8503
3380-AA4	DASD	8	8401-8503
3803-002	Tape Control	3	8401-8503
3420-008	Magnetic Tape Unit	8	8401-8503
3274-D21	D21 Control Unit	2	8401-8503
3274-D21	D21 Control Unit	1	8401-8503
3278-002	Display Station	28	8401-8503
3287-001	Printer	11	8401-8503
3350-A02	Disk Storage & CTL	2	8401-8503
3350-B02	Disk Storage	2	8401-8503
3880-003	Storage Control	2	8401-8503
3880-AA4	DASD	4	8401-8503
3278-A02	Display Console	1	8401-8503
3705-J04	Comm. Controller	2	8406-8503
4341-P02	Processor	1	8212-8304
3278-002	Display Stations	5	8212-8304
3278-A02	Display Console	1	8212-8304

UNCLASSIFIED

UNCLASSIFIED

Figure 26-16 (3 of 3)

Type/Feature #	Description	Quantity	Time
4341-M02	Processor-8M	1	8503-8702
3278-002	Display Station	24	8503-8702
3278-A02	Display Console	2	8503-8702
3880-D11	Storage Control	1	8503-8702
3278-002	Display Station	51	8503-8702
3705-J04	Comm. Controller	3	8503-8702
3203-005	Printer	3	8503-8702
1416-001	Interch Train Cart.	3	8503-8702
3814-A03	Switch Mgt. Sys. Contr. 8 x 4	2	8503-8702
3880-D13	Storage Control	3	8503-8702
3380-AA4	DASD	3	8503-8702
3380-D04	DASD	5	8503-8702
3803-002	Tape Control	3	8503-8702
3420-008	Magnetic Tape Unit	8	8503-8702
3274-D21	Control Unit Terminal Dept.	2	8503-8702
3274-D21	Control Unit	1	8503-8702
3287-001	Printer	11	8503-8702
3350-A02	DASD	2	8503-8702
3350-B02	DASD	2	8503-8702
3880-003	Storage Control	1	8503-8702
3380-AA4	DASD	4	8503-8702
3287-001	Printer	1	8503-8702
3880-B04	DASD	1	8503-8702
3278-002	Display Station	15	8303-8503

UNCLASSIFIED

25X1

4341 PROCESSORS AND PERIPHERALS

FY	<u>82</u>	<u>83</u>	<u>84</u>	<u>85</u>	<u>86</u>	<u>87</u>	<u>TOTAL</u>
	56495	198274	15720	631385	1141272	391412	2434558

Equipment in this group is priced at internal lease rates which typically yield a discount of 60% on commercial pricing. Lease data is summarized by fiscal year above. Detailed unit pricing at internal rates was unavailable at time of proposal publication.

Figure 26-17 (1 of 3) ADPE Cost Summary Lease of Hardware Groups A, F, H and L for Laboratory Option C

25X1

UNCLASSIFIED

UNCLASSIFIED

UNCLASSIFIED

Figure 26-17 (2 of 3)

Option C

Type/Feature #	Description	Quantity	Time
4341-M02	Processor-8M	1	8205-8503
3278-002	Display Station	24	8205-8503
3278-A02	Display Console	1	8205-8503
3278-002	Display Station	26	8301-8503
3705-J04	Comm. Controller	1	8401-8503
3203-005	Printer	3	8401-8503
1416-001	Interch Train Cart.	3	8401-8503
3814-A03	Switch Mgt. Sys. Contr.	2	8401-8503
3880-D13	Storage Control	1	8401-8503
3380-AA4	DASD	8	8401-8503
3803-002	Tape Control	3	8401-8503
3420-008	Magnetic Tape Unit	8	8401-8503
3274-D21	D21 Control Unit	2	8401-8503
3274-D21	D21 Control Unit	1	8401-8503
3278-002	Display Station	28	8401-8503
3287-001	Printer	11	8401-8503
3350-A02	Disk Storage & CTL	2	8401-8503
3350-B02	Disk Storage	2	8401-8503
3880-003	Storage Control	2	8401-8503
3880-AA4	DASD	4	8401-8503
3278-A02	Display Console	1	8401-8503
3705-J04	Comm. Controller	2	8406-8503
4341-P02	Processor	1	8212-8304
3278-002	Display Stations	5	8212-8304
3278-A02	Display Console	1	8212-8304

UNCLASSIFIED

UNCLASSIFIED

Figure 26-17 (3 of 3)

Type/Feature #	Description	Quantity	Time
4341-M02	Processor-8M	1	8503-8702
3278-002	Display Station	24	8503-8702
3278-A02	Display Console	2	8503-8702
3880-D11	Storage Control	1	8503-8702
3278-002	Display Station	51	8503-8702
3705-J04	Comm. Controller	3	8503-8702
3203-005	Printer	3	8503-8702
1416-001	Interch Train Cart.	3	8503-8702
3814-A03	Switch Mgt. Sys. Contr. 8 x 4	2	8503-8702
3880-D13	Storage Control	3	8503-8702
3380-AA4	DASD	3	8503-8702
3380-D04	DASD	5	8503-8702
3803-002	Tape Control	3	8503-8702
3420-008	Magnetic Tape Unit	8	8503-8702
3274-D21	Control Unit Terminal Dept.	2	8503-8702
3274-D21	Control Unit	1	8503-8702
3287-001	Printer	11	8503-8702
3350-A02	DASD	2	8503-8702
3350-B02	DASD	2	8503-8702
3880-003	Storage Control	1	8503-8702
3380-AA4	DASD	4	8503-8702
3287-001	Printer	1	8503-8702
3880-B04	DASD	1	8503-8702

UNCLASSIFIED

UNCLASSIFIED

85

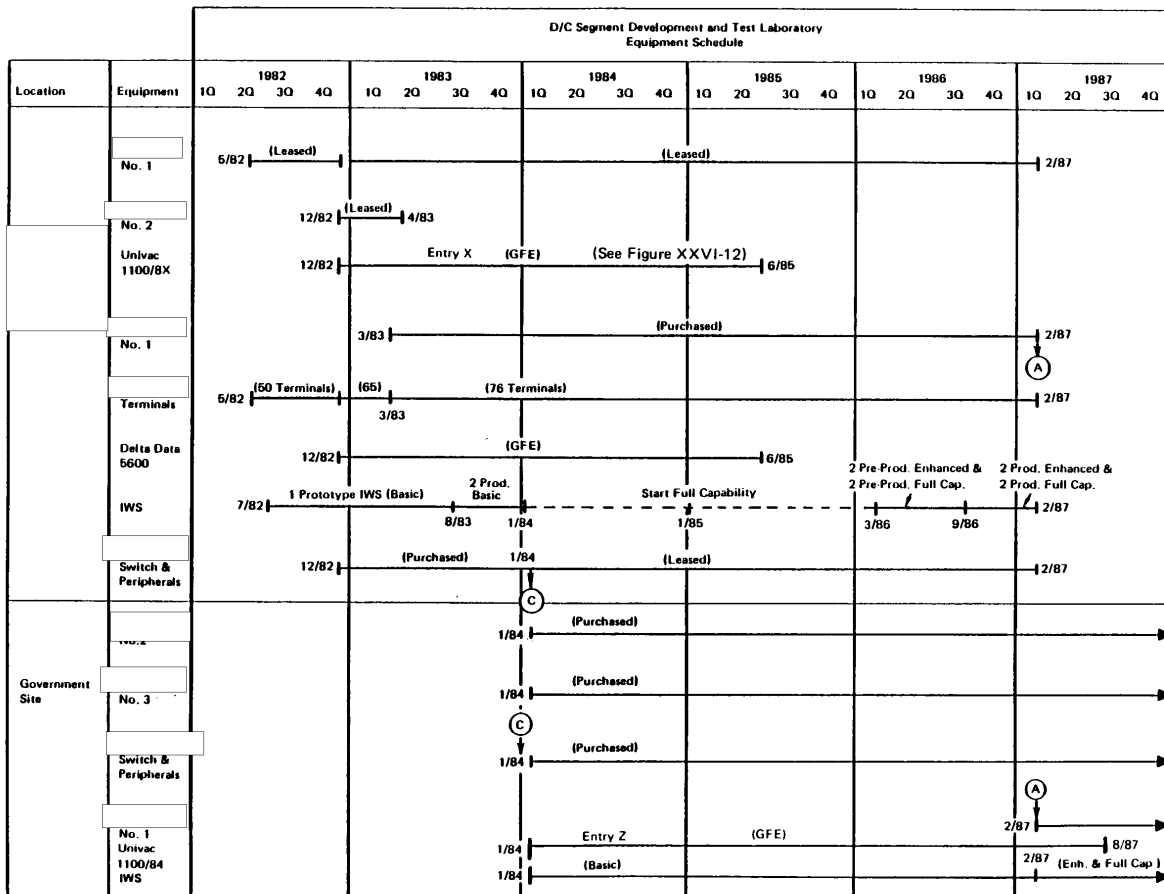


Figure XXVI B/C-1. Equipment Phasing of Contractor and Government Facilities

25X1

25X1

25X1
25X1

UNCLASSIFIED

25X1

25X1

25X1

25X1

25X1

25X1

	1982	1983	1984	1985	1986	1987
	M J J A S O N D	J F M A M J J A S O N D	J F M A M J J A S O N D	J F M A M J J A S O N D	J F M A M J J A S O N D	J F M A M J J A S O N D
Hardware Group B	Entry B					
Lab						Entry B
Site						
C	Entry C			Entry C		
Lab						
Site						
D		Entry D		Entry D		
Lab						
Site						
E		Entry E				Entry E
Lab						
Site						
G		Entry G		Entry G		
Lab						
Site						
I			Entry I			Entry I
Lab						
Site						
J			Entry J			
Lab						
Site						
K			Entry K			Entry K
Lab						
Site						

Figure XXVI B/C-2. Computer Phasing at Contractor and Government Facility - Option B & C

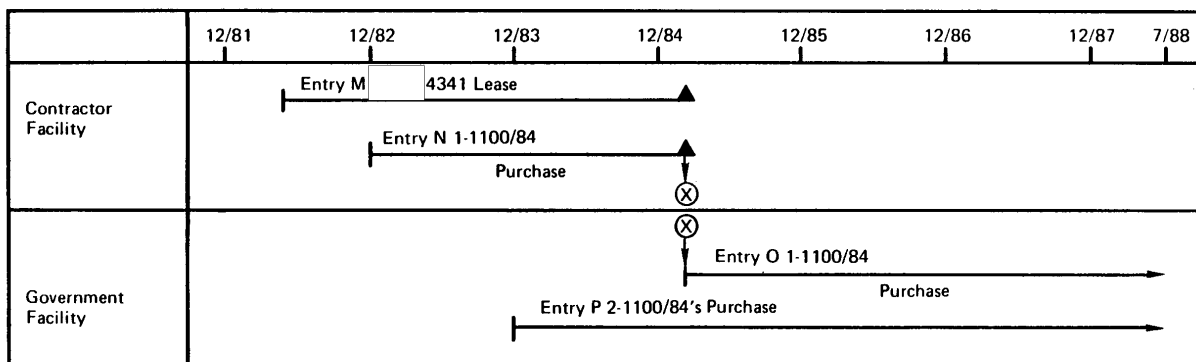
UNCLASSIFIED

UNCLASSIFIED

Page Denied

Next 4 Page(s) In Document Denied

25X1



25X1

Figure 26-V1 Computer Phasing at Contractor and Government Facilities -
Volume V, Alternate Configuration Analysis

UNCLASSIFIED

UNCLASSIFIED

Page Denied

Next 16 Page(s) In Document Denied

UNCLASSIFIED

IV.27 *Please clarify what is included in "non-commercial spares"
(Vol. IV, page IV.5-3).*

Answer:

IWS spares were referred to as non-commercial spares to differentiate them from the ADPE commercial spares which are supplied and costed under a commercial maintenance agreement.

UNCLASSIFIED

UNCLASSIFIED

IV.28 *Your cover letter implies that Vol. V is not an offer to be considered for acceptance by the Government. State how this complies with the RFP.*

Answer:

Our understanding of the RFP relative to Volume V was that there was no requirement for an offer to implement the system using the Alternate Configuration. The RFP only required a comparative analysis to the preferred solution and rough-order-of-magnitude cost deltas to the preferred configuration.

marketing practices preclude us from offering to implement a 25X1
system using other manufacturers' equipment when there is equipment 25X1
that will do the job.

UNCLASSIFIED

25X1

UNCLASSIFIED

1. *For options B&C please clarify the deinstallation data for the Univac 1100/84.*

Answer:

The deinstallation data for the Univac equipment is reflected in Volume IV, Section 10.

UNCLASSIFIED

UNCLASSIFIED

2. *Please estimate the GFE cost for the Univac 1100/84 (including base, maintenance and commercial S/W) for all options which use their computer.*

Answer:

The costs for all GFE equipment are reflected in the response to Question IV.26.

UNCLASSIFIED

UNCLASSIFIED

3. *Say again whether the design margin is reduced in the "BAFO" outlook.*

Answer:

Our design margin requirement is unchanged at 100%. For BAFO, we have replaced the purchase of processor with the required development margins with processors that are field-upgradable to (and, in fact, beyond) the required margins. If our current performance projections hold during the SAP, the upgrade would not be required. If, however, the processing requirement grows, the processors could be expanded to meet the need.

UNCLASSIFIED

UNCLASSIFIED

4. *Will the prices for all commercial hardware (including maintenance) be firm prices in the "BAF".*

Answer:

All commercial hardware prices in the "BAF" are firm. In addition, our ADPE special price offers the Government price protection on the D/C Segment proposed configuration.

UNCLASSIFIED

UNCLASSIFIED

5. *Please supply the configuration (including the equipment list) for the Univac 1100/84 for all options which use that computer system.*

Answer:

The configuration information requested is defined in the response to Question IV.26.

UNCLASSIFIED

UNCLASSIFIED

UNCLASSIFIED