

G. LEBOVSKIY, V. D.

EXCERPTA MEDICA Sec 2 Vol 12/1 Physiology Jan 59

III. EXTENSOR REFLEXES AT EARLY STAGES OF POSTNATAL DEVELOPMENT (Russian text) - Glebovskii V. D. Dept. of Physiol., Paediat. Med. Inst., Leningrad - FIZIOL. ZH. SSSR 1958, 44/4 (334-341) Russ. 3

The quadriceps femoris muscle of decerebrate kittens, at the age of from several hours to 35 days, was extended by means of passive flexion of the hind limb at the knee joint. The EMG of antagonistic hind limb muscles was recorded. During the first hours or days of life, when the quadriceps muscle was in tonic contraction, its extension tended to produce autogenous inhibition. Myotatic reflexes were neither constant nor stable. At the same time, a distinct myotatic reflex of forelimb extensors was noted. Philippson's reflex could be obtained immediately after birth. The decerebration rigidity persisted after section of the tendon of the quadriceps muscle. In older kittens, the myotatic reflex became more pronounced and more stable, while the minimal force of extension eliciting autogenous inhibition increased. In preparations of kittens of the same age, the activity of proprioceptive reflexes depends upon the intensity of decerebrate rigidity.

Simonson - Minneapolis, Minn.

GLEBOVSKIY, V.D.

Dependence of reflexes on the strength and frequency of stimulation
of the central segments of muscle nerves of contralateral extremities.
Fiziol.zhur. 46 no.8:917-925 Ag '60. (MIRA 13:8)

1. From the Chair of normal physiology, Paediatric Medical Institute,
Leningrad.

(MUSCLES)

(REFLEXES)

GLEBOVSKIY, V.D.

Reflexes produced by rhythmic excitation on the muscular nerves.
Biol. eksp. biol. i med. 49 no. 6:8-13 Je '60. (MIRA 13:8)

1. Iz kafedry normal'noy fiziologii (zav. - prof. D.G. Kvasov)
Pediatricheskogo meditsinskogo instituta (dir. - prof. N.T.
Shutova), Leningrad. Predstavlera deystv. chlenom AMN SSSR
A.F. Turom.

(REFLEXES) (MUSCLES)

GLEBOVSKIY, V.D.

Contractil properties of respiratory muscles in adult and newborn animals. Fiziol. zhur. 47 no.4:427-435 Ap '61. (MIRA 14:6)

1. From the Normal Physiology Chair of the Paediatric Medical Institute, Leningrad.
(RESPIRATION) (MUSCLES)

GLEBOVSKIY, V.D.

Physiological characteristics of the motor fibers of the phrenic
and intercostal nerves in adult and newborn animals. Fiziol. zhur.
47 no.10:1267-1275 0 '61. (MIRA 15:1)

1. From the Department of Normal Physiology, Pediatric Medical
Institute, Leningrad.
(NERVES, INTERCOSTAL) (PHRENIC NERVE)

GLEBOVSKIY, V.D. (Leningrad); MATYUSEKHIN, D.P. (Leningrad)

Review of the collection, "Motor visceral reflexes in their physiology
and clinical aspects." Fiziol. zhur. 48 no.1:106-107 Ja '62.

(MIRA 15:2)

(REFLEXES)

(VISCERA)

GLEBOVSKIY, V.D.

Stretch receptors of the diaphragm. Fiziol.zhur. 48 no.5:545-553
My '62. (MIRA 15:8)

1. Kafedra normal'noy fiziologii Pediatricheskogo meditsinskogo
instituta, Leningrad.
(DIAPHRAGM--INNERVATION) (RESPIRATION)

GLEBOVSKIY, V.D.; PAVLOVA, N.A.

Reflexes of the diaphragm in adequate stimulation of pulmonary and respiratory muscle receptors. Fiziol. zhur. 48 no.12:1444-1453 D '62. (MIRA 16:2)

1. From the Department of Physiology Pediatric Medical Institute, Leningrad.

(DIAPHRAGM--INNERVATION) (RESPIRATION)

GLEBOVSKIY, V.D.

Physiological properties of the sensory fibers of the phrenic
and intercostal nerves. Biul. eksp. biol. i med. 53 no.2:17-22
P'62. (MIRA 15:3)

1. Iz kafedry normal'noy fiziologii (zav. - prof. D.G. Kvasov)
pediatr'cheskogo meditsinskogo inistituta, Leningrad. Predstavlena
deystvitel'nym chlenom AMN SSSR A.F. Turcm.
(PHRENIC NERVE) (NERVES, INTERCOSTAL)

GLEBOVSKIY, V.D.

Intercostal muscle reflexes during adequate stimulation of
pulmonary and thoracic receptors. Fiziol. zhur. 49 no.3:
965-975 Ag '63. (MIRA 17:2)

1. From the Department of Physiology, Pediatric Medical
Institute, Leningrad.

GIFROVSKIY, V.D.

Variation in compliance and rate of spread of response to the
stimulations of varying intensity of peripheral proprioceptive
nerve fibers. *Ukr. zh. fiziol. nauk* 1976, 23: 1-4.

(UFA 12:1)

1. From the Department of Physical Therapy, Institute of Medicine, Institute,
Leningrad.

GLEBOVSKIY, V.D.; BEYKH, L.Ya.

Sequelae of bilateral paralysis of the diaphragm in kittens.
Biol. eksp. biol. i med. 59 no.4:26-30 Ap '65. (MIRA 18:5)

L. Kafedra normal'noy fiziologii (zav. - prof. E.G. Kvasov)
Pediatricheskogo meditsinskogo instituta, Leningrad.

BEKASOV, V.S. (Moskva); GIBBOWSKIY, V.S. (Moskva); KRYVAKOV, I.V. (Moskva);
SAYGIDIN, A.M. (Moskva)

Sulfur and oxygen distribution between iron and limestone-alumina
slag during suspension smelting. Izv. AN SSSR. Met. no. 6:21-27
1965. (MIRA 19:1)

1. Submitted February 13, 1965.

BURTSEV, V.P.; GLEBOVSKIY, V.G.

Method for studying the distribution of impurities between the metal and the slag during melting in suspension. Zav. lab. 31 no.11:1352-1356 '65. (MIRA 19:1)

1. Institut metallurgii imeni Baykova, Moskva.

GLEBOVSKY, U. S.

PA 13711

USSR/Magnetism, Terrestrial
Geology

Apr 1946

"The Reason for the East-Siberian Continental Anomaly
of the Magnetic Field," U. S. Glebovsky, U. S. P.

"Izv Ak Nauk Geograf i Geofiz." Vol X, No 4

Direct measurements of the magnetic properties of
rock in the region of East Siberia, together with
geological observations, on which is based a theory
a number of peculiarities of the earth's magnetic
field.

13711

GLEBOVSKIY, Y. S.
25432

Rezultaty Geofizicheskikh Issledovaniy. Allanskoje Massiv. Sov. Geologiya,
No. 32, 1948, s. 43-57

SO: LETOPIS NO. 30, 1948

Glebovskiy, Yu. S.

USSR/Physics of the Earth - Electric and Magnetic Field of the Earth, C-1

Abst Journal: Referat Zhur - Fizika, No 12, 1956, 36400

Author: Glebovskiy, Yu. S.

Institution: None

Title: On the Causes of the Anomalous Magnetization of Mountain Rocks and Ores

Original
Periodical: Sb. nauch. tekhn. inform., M-vo geol. i okhrany nedr, 1955, No 1, 76-80

Abstract: Development of a new hypothesis concerning the formation of anomalous magnetization of rocks and ores. It is proposed that the basic magma and the lavas can retain their fluidity at a temperature below the crystallization temperature and below the Curie point of magnetite and of certain other ferromagnetic and paramagnetic minerals. Such a suspension, containing a liquid magma and the solid crystals that separate out of the magma obeys the laws of hydromechanics. When the magma moves in a crack in the rock, its speed in the center and

Card 1/3

USSR/Physics of the Earth - Electric and Magnetic Field of the Earth, 0-4

Abst Journal: Referat Zhur - Fizika, No 12, 1956, 36400

Abstract: near the walls of the cracks is different. The moving magma causes a reorientation of the separating solid crystals. Depending on the width and on the slope of the crack, one determines the direction of the orientation of the crystals of the magnetite, and the orientation of the crystals will vary substantially even within the same intrusion both along its length, as well as transversely to it. At certain values of relative viscosity, temperature, and pressure, the processes of the rotation of the crystals may gradually encompass the entire crack intrusion and, according to the laws of hydrodynamics, may change the orientation of the crystals by as much as 180° inclusive. If the melting substance moves after the time that the magnetite has become precipitated in the form of crystals and has cooled below the Curie point, then according to the mechanism described for the formation of certain intrusions, the crystals become magnetized and after that they change their orientation all the way to reversal. This will result also in a reversed magnetization. For ore deposits of the Angara-Ilimsk type, the proposed hypothesis is applicable only if one assumes that they are of magmatic origin. The author considers it possible to employ also the laws of

Card 2/3

USSR/Physics of the Earth - Electric and Magnetic Field of the Earth, O-4

Abst Journal: Referat Zhur - Fizika, No 12, 1956, 36400

Abstract: hydrodynamics to explain the reverse magnetization of deposits of the hydrothermal type and of the sedimentation rocks. It is indicated that this hypothesis must be checked by studying the structure and the physical properties of oriented specimens, thoroughly selected from anomalously-magnetized bodies.

Card 3/3

GLEBOVSKIY, Yu.S., starshiy nauchnyy sotrudnik

Ridge discovered below ice in the region of the Pionerskaya
Station. Inform. biul. Sov. antark. eksp. no.7:5-9 '59 (MIRA 13:3)

1. Leningradskiy filial Vsesoyuznogo nauchno-issledovatel'skogo
instituta Geofiziki.

(Geology, Structural--Pionerskaya region)

GLEBOVSKIY, Yu.S, starshiy nauchnyy sotrudnik

Geological structure of the Mirnyy Observatory area. Inform.
biul. Sov. antark. eksp. no.8:21-23 '59. (MIRA 13:3)

1.Vsesoyuznyy institut metodiki i tekhniki razvedki.
(Mirnyy region--Geology, Structural)

GLEBOVSKIY, Yu.S., starshiy nauchnyy sotrudnik

The Mount Brown-Gaussberg subglacial ridge. Inform. biul. Sov. antark.
eksp. no.10:13-17 '59 (MIRA 13:3)

1. Leningradskiy filial Vsesoyuznogo nauchno-issledovatel'skogo in-
stituta geofiziki.

(Brown region (Antarctica)--Geology, Structural)

(Gaussberg region (Antarctica)--Geology, Structural)

85918

S/169/60/000/010/013/013
A005/A001

9.9500

Translation from: Referativnyy zhurnal, Geofizika, 1960, No. 10, p. 213, # 13231

AUTHOR: Glebovskiy, Yu.S.

TITLE: The Properties of the Magnetic Anomalies of the Westfall Oasis

PERIODICAL: Inform. byul. Sov. antarkt. ekspeditsii, 1959, No. 11, pp. 33-36

TEXT: The results of an aeromagnetic survey performed by the Soviet ant-
arctic expedition are compared with the geological structure and the aerophoto-
graphs of the Westfall oasis. The bareness of the section makes it possible to
determine quite reliably that the magnetic anomalies (variation amplitude up to
 $\Delta T = 2,500 \gamma$) are associated with the development sections of the basic rock
dikes, and that the strike of the anomalies does not reflect that of individual
dikes but the outlines of the crack zones. The author points out that the con-
clusions obtained in the Antarctic may be also extended to other parts of the
earth' surface, in particular to the regions of the Taymyrskaya and Leno-Vilyu-
skaya depressions, where the interpretation conclusions were of hypothetic charac-

f

Card 1/2

85918
S/169/60/000/010/013/013
A005/A001

The Properties of the Magnetic Anomalies of the Westfall Oasis

ter in consequence of the covered state of the rocks and the deficiency of expensive drillings.

V.P. Orlov

Translator's note: This is the full translation of the original Russian abstract.

Card 2/2

OLEBOVSKIY, Yu.S., starshiy nauchnyy sotrudnik

Principal results of small-scale aerial magnetic surveying south
of the Shackleton Shelf Ice. Inform.biul.Sov.antark.eksp. no.12:
37-40 '59. (MIRA 13:6)

1. Leningradskiy filial Vsesoyuznogo nauchno-issledovatel'skogo
institut Geofiziki.
(Shackleton Shelf-Ice region--Geology, Structural)

GLEBOVSKIY, Yu. S.

"Methods of Aerogeophysical Exploration in the USSR."
"Aeromagnetic Survey of the Soviet Antarctic Expedition."

report submitted for the United Nations Seminar on Aerial Survey Methods and
Equipment, Bangkok, Thailand, 4 January - 5 Feb 1960.

Leningrad Branch, AU Research Inst. of Methods and Techniques of Surveys.

GLEBOVSKIY, Yu.S.

Foreign airborne geophysical methods. Geofiz. prib.
no.9:90-93 '61. (MIRA 15:11)
(Prospecting--Geophysical methods)
(Aeronautics in geology)

E/189/52/000/006/028/095
5229/9304

AUTHOR: Glebovskiy, Yu. S.

TITLE: Results of an aeromagnetic survey in Antarctica
(Discourse theses)

PERIODICAL: Referativnyy zhurnal, Geofizika, no. 6, 1962, 29, ab-
stract 6A215 (V sb. Sostoyaniye i perspektivy razviti-
ya geofiz. metodov poiskov i razvedki polezn. isko-
pashnykh, K., Gosstektkhizdat, 1961, 553-574)

NOTE: An aeromagnetic survey on the East Antarctic Platform covered
an area of more than 40,000 km². A number of ridges and horsts were
discovered beneath the ice as a result of the aeromagnetic data's
interpretation; their structural and age correlations with each
other and with the platform's contiguous tectonic elements were
also established. It is concluded that there is a link between the
intensive magnetic anomalies near Westfold Oasis and intrusive acti-
vity in the fracture zone; in the author's opinion, this may ex-
plain the nature of a series of magnetic anomalies in the enclosed

Card 1/2

results of an aeromagnetic ...

6/16/62/000/006/028/033
0213/0504

sections of east Antarctica and in analogous areas of the USSR. The leading role of aeromagnetic surveying in the complex of Antarctic geophysical investigations is indicated. [Abstracter's note: Complete translation.]

Card 2/2

0017
S/B73/62/000/004/001/002
A052/A101

AUTHOR: Glebovskiy, Yu. S.

TITLE: On local magnetic variations and anomalous terrestrial currents on the Antarctic coastline

SOURCE: Leningrad. Nauchno-issledovatel'skiy institut geologii Arktiki. Trudy, v. 132, 1962. Geofizicheskiye metody razvedki v Arktike, no. 4, 7 - 9

TEXT: The article represents an attempt to explain the anomalously intensive terrestrial currents and local magnetic field variations observed on the Antarctic coastline. Hitherto this phenomenon (coastal effect) was ascribed to the presence in the sea of electric current induced by outside sources or to the skin effect. Also attempts to substantiate the suggested hypotheses mathematically have been undertaken. Without rejecting other existing theories the author considers them as not quite convincing, in particular, because of the absence of any recommendations for their experimental verification. The author believes that the said phenomenon can be fully or partly explained as the result

Card 1/3

3/22/52/055/00A/001/02
AO52/A101

On local magnetic variations and anomalous...

of salt sea water contacting the fresh water originating from the melting land ice. When two solutions, differing only by the concentration of the same salts, contact, a jump of the potential takes place in the contact region. This diffusive potential is conditioned by the dissociation of dissolved salts and by the different velocity of ions during the equalization of concentrations. Depending on the kind of ions, positive or negative, which have a higher mobility, the concentrated solution of salts near the boundary with the low-concentrated solution is charged positively or negatively. (On this principle concentration galvanic cells work and on it the turbineless hydroelectric plants are based, utilizing the difference of saltiness of the sea and river water. The same process takes place when the almost saltless land ice of Antarctica melts while contacting the sea water and the salt diffuses into the fresh water. The diffusion takes its course along the frontal surface of the ice wall in the lower ice surface and inside the surface layer between crystals, whereby the porosity of the land ice increases the contact area. The process of equalization of concentrations develops as described above with the displacement of ions, emergence of diffusive potentials and ion currents. Each of the innumerable pores and cracks on the ice-water contact can be considered as a concentration galvanic cell, and the

Card 2/3

On local magnetic variations and anomalous...

8/873/62/000/004/001/002
AO52/A101

summary effect at an ordered orientation of elementary processes may be very high. Under actual conditions the processes of diffusion and electric current formation on the ice-sea water contact are complicated by many factors: tides, destructive work of waves and also probably by the seasonal fluctuation of water saltiness and temperature. All this makes the quantitative evaluation of the described phenomenon complicated, but its presence cannot be questioned. The question remains whether it is the only cause of anomalous variations. For quantitative evaluation the author recommends a laboratory study using real sea water and different samples of Antarctic land ice. If the author's hypothesis proves correct the magnetic observatories in Antarctica should be located some distance away from the coastline. Furthermore this hypothesis entitles to a conclusion that anomalous variations are characteristic for any place in the world where salt sea water contacts fresh ice (Greenland, Franz Josef Land, Severnaya Zemlya). It is also possible that this phenomenon, in a modified form, takes place in estuaries of rivers flowing into seas.

Card 3/3

AM4016863

BOOK EXPLOITATION

S/

Boshnyakovich, Igor" Dragomirovich; Glebovskiy, YUriy Sergeyeovich

Photocontrol extension of aerogeophysical photo strips and anomalies (Fotoprivyazka aero-geofizicheskikh marshrutov i anomalii) Moscow, Gosgeoltekhizdat, 63. 0171 p. illus., biblio. Errata slip inserted. 2000 copies printed.

TOPIC TAGS: aerial photography, aerial photography strips, photocontrol extension, aerogeophysical photostrip, aerogeophysical anomaly

PURPOSE AND COVERAGE: The book contains essential data necessary for the planning and effecting photocontrol extension of aerogeophysical photostrips and anomalies, and a report of the experience of scientific research and production organizations of Gosudarstvennyy geologicheskii komitet SSSR (State Geological Committee SSSR). The fundamentals of aerogeophysical research procedures are described.

Card 1/4

AM4016863

the significance of exact planned control of results of aerogeophysical measurements is indicated, and the advantages and shortcomings of photocontrol extension are considered. General information is presented on aerophotography and the aerial photography apparatus used in aerogeophysical work. Procedures and techniques for photocontrol extension for different types and different conditions of aerogeophysical research is discussed, particularly in the case of detailed photography at altitudes below 100 meters. A separate chapter is devoted to the projecting and organization of photocontrol extension, description of the aerial photography process, the gathering of field data, and preparation of reports. The book is for specialists who take part in the production of aerogeophysical photographs, geophysicists, aerial photographers, photogrammetrists, photographic laboratory workers, the flight crew, and those who compile summary geophysical maps and geophysics students. The authors express deep gratitude for valuable advice and remarks to Doctor of Technical Sciences Professor M. D. Konshin, Candidate of Technical

Card 2/2

AM4016863

Sciences S. V. Knorozov, staff member of Nauchno-issledovatel'skiy institut geologii Arktiki (Scientific Research Institute of the Geology of the Arctic) A. M. Karasik, and their co-workers Yu. A. Bochkov and N. D. Yaskovich. The introduction and conclusion were written by Yu. S. Glebovskiy, Ch. IV by I. D. Boshnyakov, and the remaining chapters are jointly written.

TABLE OF CONTENTS:

Foreword - - 3
Introduction - - 7
Ch. I. Brief information on aerophotography - - 34
Ch. II. Fundamentals of the procedure for photocontrol extension
of aerogeophysical strips and anomalies - - 71
Ch. III. Planning, organization, and technique of field and office
work, reporting procedure - - 114
Ch. IV. Increase of efficiency of photocontrol extension - - 145

Card 3/4

GCRSKI, Marian; GLEBOWSKI, Henryk

Magnesium fertilization. Postepy nauk roln 7 no.3:3-11 My-Je '60.
(EEAI 9:12)

1. Zaklad Chemii Rolniczej SGGW
(Magnesium) (Fertilizers and manures)

MOSKAL, Stanislaw; GLEBOWSKI, Henryk

The absorption of phosphorus by oats from different depths in soil. Rocznik nauk rolniczych 83 no.1:167-175 '60. (EEAI 10:7)

1. Zaklad Chemii Rolniczej Szkoły Glownej Gospodarstwa Wiejskiego, Warszawa. Kierownik: prof. dr M. Gorski.
(Phosphorus) (Poland--Oats)

LENKO, Jan; PANASIEWICZ, Kazimierz; GLEBOWSKI, Jozef

The problem of active industrial prophylaxis of urological diseases among workers exposed to aromatic amines. Med. pracy 16 no.1:67-70 1965

1. Z Kliniki Urologicznej Akademii Medycznej (Kierownik: prof. dr. med. J. Lenko); i z Zakladu Przemyslu Barwnikow (Kierownik: dr. J. Glebowski).

BOMSKI, Henryk; BOMSKA, Halina; GLEBOWSKI, Jozef; GIER, Maria

Iron deficiency in workers exposed to aromatic nitro- and amino-
compounds. Polski tygod.lek. 16 no.1:26-27 2 Ja '61.

1. Z Zakladu Leczniczo-Zapobiegawczego przy ZPB "Boruta" w Zgierzu;
kierownik: dr J.Glebowski, konsultant; dr H.Bouski.

(IRON defic)

(POISONING)

(OCCUPATIONAL DISEASES)

100
BOWSKI, Henryk
BOWSKA (in cop); Given Name

Country: Poland

Academic Degrees: Dr. med.

Originator of Division of Internal Diseases, Municipal Hospital
APPOINTMENT: (Główny Chorob Wewnętrznych Szpitala Miejskiego), Egiera

Source: Warsaw, Przebieg Lekarski, No 5, 1961, pp 195-196.

Data: "Disturbances in the Iron Balance in Internal Diseases and in Chemical
Factory Workers."

Co-authors:

BOWSKA, Malina, Division of Internal Diseases, Municipal Hospital, Egiera;
Ordinator: Henryk BOWSKI, Dr. med.

GLEBOCZKI, Josef, Division of Internal Diseases, Municipal Hospital, Egiera;

Ordinator: Henryk BOWSKI, Dr. med.

SKRZYCKA, Grazyna, Division of Internal Diseases, Municipal Hospital,
Egiera; Ordinator: Henryk BOWSKI, Dr. med.

GIER, Maria, Division of Internal Diseases, Municipal Hospital, Egiera;

Ordinator: Henryk BOWSKI, Dr. med.

OTWORSKI, Jan, Division of Internal Diseases, Municipal Hospital, Egiera;

Ordinator: Henryk BOWSKI, Dr. med.

GLEBSKI, Jerzy

Value of urine examination in the diagnosis of trichomoniasis.
Wiad. parazyt. 10 no.1:41-49 '64.

1. Zakład Analizy Klinicznej Katedry III Kliniki Chorob
Wewnętrznych Akademii Medycznej w Łodzi.

"APPROVED FOR RELEASE: 09/24/2001

CIA-RDP86-00513R000500030003-0

APPROVED FOR RELEASE: 09/24/2001

CIA-RDP86-00513R000500030003-0"

615677, 4007

Experimental determination of wave resistance of a ship hull
with a (T-shaped) vertical fin as estimated by
statistical analysis. *Med. parvozt.* 11, no. 12: 45-48, 1955

Case observation on the secretory function of the stomach
in Leishmaniasis. *Med.* 22: 77

1. *Parlad D. and other Laboratory of ...*
K. *Parlad D. and other Laboratory of ...*

SECRET

SECRET

SECRET

GLEBSKI, Jerzy; MALDYK, Henryka

On strongyloidiasis. *Polskie arch. med. wewnetrz.* 31 no.2:251-260
'61.

1. Z Laboratorium P.S.K. Nr 1 Kierownik: dr med. A. Wierzbowska
i I Kl. Chor. Wewy. A.M. w Łodzi Kierownik: prof. dr nauk med.
J. W. Grett.

(STRONGYLOIDIASIS case reports)

GLEBSKI, Jerzy

Detection of *Trichomonas vaginalis* with the aid of phase-contrast microscopy. *Polski tygod. lek.* 16 no.48:1846-1848 27 II '61.

1. Z Laboratorium Szpitala Klinicznego Nr 1 A.M. w Lodzi; kierownik: doc. dr med. A. Wierzbowska.

(TRICHOMONAS INFECTIONS diag)

(MICROSCOPY)

GLEBSKI, Jerzy

Some diagnostic errors in the examination of parasite eggs. Wlad.
parazyt. 8 no.5:539-542 '62.

1. Laboratorium Szpitala Klinicznego Nr 1 AM, Lodz.
(PARASITIC DISEASES) (FECES) (POLLEN)

GLEBSKI, Jozef

1. [Illegible text]

2. [Illegible text]

3. [Illegible text]

4. [Illegible text]

5. [Illegible text]

6. [Illegible text]

7. [Illegible text]

8. [Illegible text]

9. [Illegible text]

10. [Illegible text]

11. [Illegible text]

12. [Illegible text]

13. [Illegible text]

14. [Illegible text]

15. [Illegible text]

16. [Illegible text]

17. [Illegible text]

18. [Illegible text]

19. [Illegible text]

20. [Illegible text]

21. [Illegible text]

22. [Illegible text]

23. [Illegible text]

24. [Illegible text]

25. [Illegible text]

26. [Illegible text]

27. [Illegible text]

28. [Illegible text]

29. [Illegible text]

30. [Illegible text]

31. [Illegible text]

32. [Illegible text]

33. [Illegible text]

34. [Illegible text]

35. [Illegible text]

36. [Illegible text]

37. [Illegible text]

38. [Illegible text]

39. [Illegible text]

40. [Illegible text]

41. [Illegible text]

42. [Illegible text]

43. [Illegible text]

44. [Illegible text]

45. [Illegible text]

46. [Illegible text]

47. [Illegible text]

48. [Illegible text]

49. [Illegible text]

50. [Illegible text]

1954

1955

GLEBSKI, Jerzy

Some notes on the examination of duodenal contents for the presence of *Lambli*a. Pol. tyg. lek. 19 no.31:1198-1199 3 Ag'64

1. Z Zakładu Analizy Klinicznej przy Katedrze III Klinicznej Chorob Wewnętrznych Akademii Medycznej w Łodzi; kierownik: doc. dr. med. A. Wierzbowski.

POLAND

GLEBSKI, Jerzy.

Diagnostic Laboratory at the 3rd Clinic of Internal Diseases, Medical Academy, Lodz (Zaklad Diagnostyki Laboratoryjnej, Lodz).

Warsaw, Acta Parasitologica Polonica, Fasc 17, pp 171-175

"Some remarks on the frequency of trichomoniasis in different age groups."

Glebskiy, Yu. V.

25-6-3/42

AUTHOR: GLEBSKIY, Yu, V.

TITLE: On the Characteristic Properties of the Solutions of Regular and Quasi-Regular Problems of the Calculus of Variations (O kharakteristicheskikh svoystvakh resheniy regulyarnykh i kvazi-regulyarnykh zadach variatsionnogo ischisleniya)

PERIODICAL: Doklady Akad.Nauk, SSSR, . 1957, Vol. 116, Nr 6, pp. 910-912 (USSR)

ABSTRACT: The author considers the characteristic properties of the curves which give an absolute minimum of regular and quasi-regular positive-definite simple integrals of the calculus of variation (in parameter representation). Furthermore the convergence of the curve sequences is considered with respect to the functional. Among others it is stated that the characteristic property, necessary and sufficient for the fact that a simply closed curve gives a minimum of a functional of a prescribed class, is the condition that the curve be smooth with respect to a functional of the considered class (e.g. with respect to the arc length for regular functionals). There are 4 references, 2 of which are Slavic.

Card 1/2

On the Characteristic Properties of the Solutions of Regular and Quasi-Regular Problems of the Calculus of Variations 20-6-3/42

ASSOCIATION: Gor'kiy State University imeni N. I. Lobachevskiy (Gor'kevskiy gosudarstvennyy universitet im. N. I. Lobachevskogo)

PRESENTED: By I.G.Pretrovskiy, Academician, May 3, 1957

SUBMITTED: January 30, 1957

AVAILABLE: Library of Congress

Card 2/2

S/044/62/000/006/098/127
B166/B112

AUTHOR: Glebskiy, Yu. V.

TITLE: Realizable sequence in finite automata

PERIODICAL: Referativnyy zhurnal. Matematika, no. 6, 1962, 44, abstract
6V217 (Sb. "Probl. kibernetiki." no. 5, M., Fizmatgiz,
1961, 279-282)

TEXT: Using algebraic concepts associated with semigroups the author:
(1) indicates an algorithm which for any finite sequence of output symbols
(or of pairs of input and output symbols) ascertains the possibility of
obtaining this sequence in the given automaton; (2) formulates a
criterion which for two given automata establishes whether combinations of
all the sequences of output symbols (or of pairs of input and output
symbols) which can be obtained in these automata are identical.
[Abstracter's note: This article is overloaded with terms and
designations.] [Abstracter's note: Complete translation.]

Card 1/1

3817
S/Sgt. [handwritten]
[handwritten]

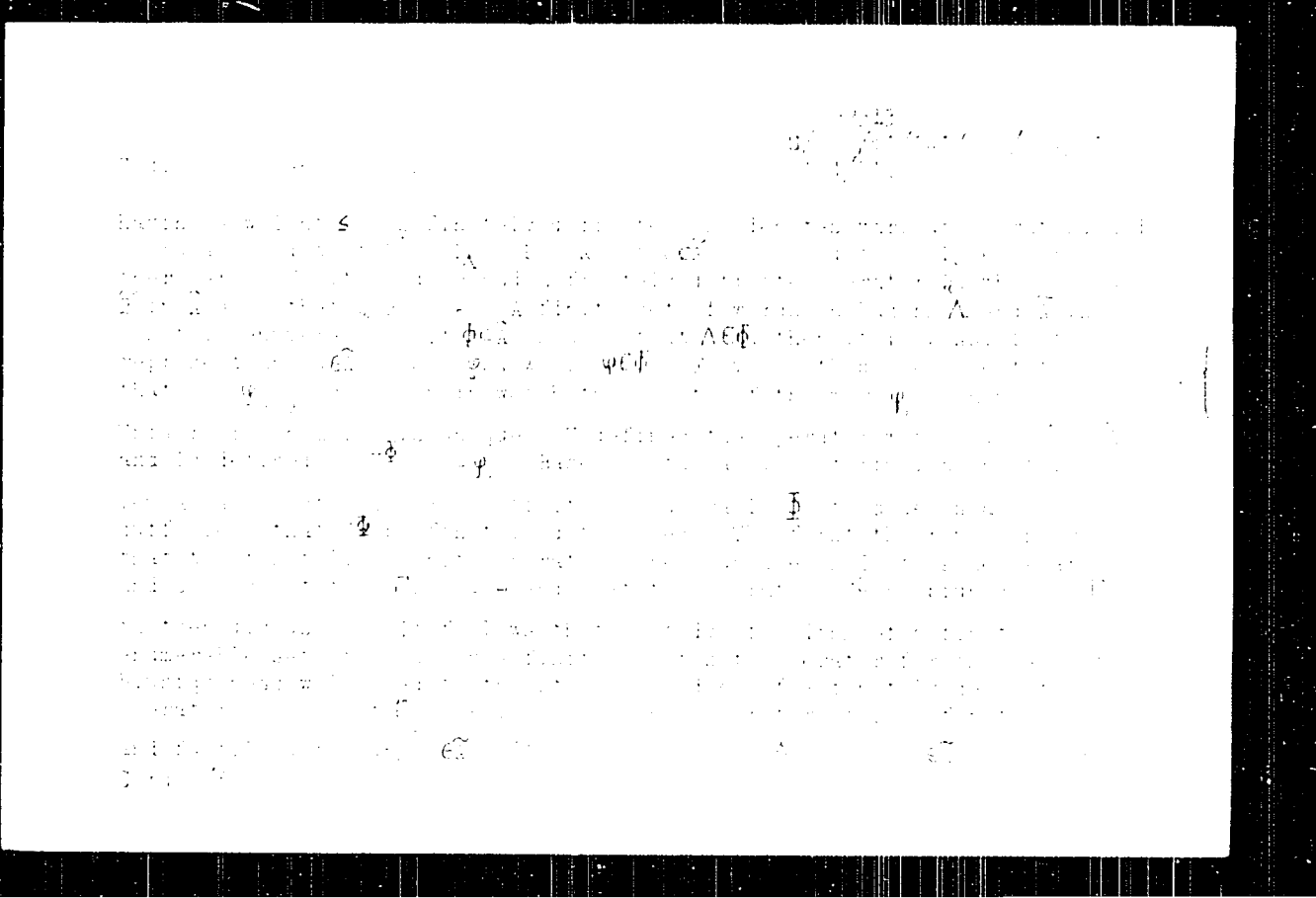
6.9500

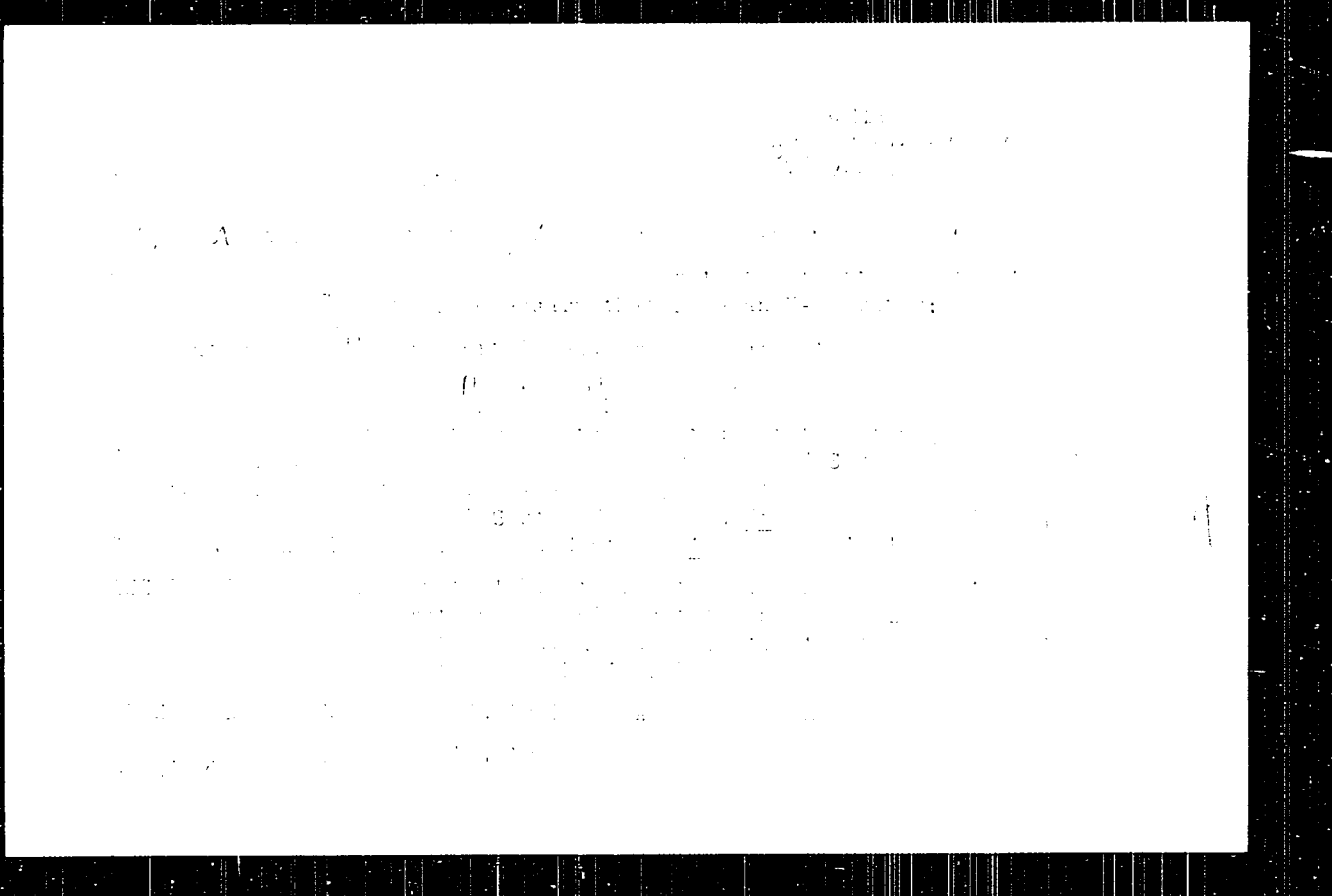
ATTORNEY [handwritten]

TEXT [handwritten]

PERIODICAL [handwritten]

TEXT The set of all integers is denoted by \mathbb{Z} . Let A and B be discrete devices which have a common set of operations. Let f be the function which maps the set of all operations into the set of all operations which can be performed by A and B . Let f^{-1} be the inverse function of f . Let K and L be the sets of all elements of the alphabet $A = \{a_1, a_2, \dots, a_n\}$ and $B = \{b_1, b_2, \dots, b_m\}$. The operator P maps the K in B is fully determined if it satisfies the following conditions: $P(a_i) = \Lambda$ (where Λ stands for the blank word), if the letter a_i does not exist in the word $P^{-1}(a_i)$ for any $i \in \mathbb{N}$; if the letter a_i differs by b_j , $i \in \mathbb{N}$, is finite. The number of elements of the set $P^{-1}(a_i)$ is called the multiplicity of the letter a_i in $P^{-1}(a_i)$.





S/194/62/000/008/025/100
D201/D308

AUTHOR: Glebskiy, Yu.V.

TITLE: Sequences realizable in finite automata

PERIODICAL: Referativnyy zhurnal. Avtomatika i radioelektronika,
no. 8, 1962, abstract 8-2-139 ch (In collection: Probl.
kibernetiki, no. 5, M., Fizmatgiz, 1961, 279-282)

TEXT: The author considers finite automata (L-automata) $A = \{P, Q, R, f, g\}$ given by sets of input symbols $P = \{p^1, \dots, p^1\}$ output symbols $R = \{r^1, \dots, r^n\}$, internal states $Q = \{q^1, \dots, q^m\}$, and by mappings f and g of the set $P \times Q$ on the sets R and Q . The word $(p_0, r_0), \dots, (p_k, r_k)$ from the set $P \times R$ of all finite words. ($k = 1, 2, \dots$) from the set $P \times Q$ is called realizable in A if a word $q_0, q_1, \dots, q_{k+1} \in Q$ can be found for which the following equations are satisfied

$$r_t = f(p_t, q_t); q_{t+1} = g(p_t, q_t) \quad (1)$$

Card 1/2

Sequences realizable in finite automata 3/194/62/000/008/025/100
D201/D308

where $t = 0, 1, \dots, k$. The set of all words realizable in A is denoted by Ω_A^{PR} . Two L-automata are called reflector-equivalent if $\Omega_{A_1}^{PR} =$

$\Omega_{A_2}^{PR}$ and effector-equivalent if $\Omega_{A_1}^f = \Omega_{A_2}^f$. A theorem is proved

that, in order that the word $x = \overline{PR} (y \in R)$ be realizable in A , it is necessary and sufficient that it be recorded in the reflector (effector) circuit of the L-automaton A . Consequently the determination of the realizability of the word x or y in the automaton A is achieved by determining the recording of this word in the corresponding system, for which an algorithm is given. Similar definitions and proofs are given for the L-converter $\mathcal{K} = (A, q^{10}, Q)$ of the L-automaton with predetermined initial internal state $q^{10} \in Q$. 6 references.

[Abstracter's note: Complete translation.]

16.6800

h1673

S:582/62,000/007,005,008
1011/1211

AUTHOR: Glebskiy, Yu. V., (Gor'kiy)
TITLE: Encoding by the use of automatic machines with a finite memory
SOURCE: Problemy kibernetiki, no. 7, 1962, 127-149

TEXT: The one-to-one correspondence of the encoding of words in one alphabet by words in another (or the same one) by operators realized by digital devices is investigated. Operators realized by devices with memory are investigated in papers on finite automatic machines, but the commonly demanded synchronization of input and output limits the discussion to operators that cannot encode letters by words of different lengths. This paper deals with modified common operators that make such an encoding possible. Attention is paid exclusively to the one-to-one correspondence of the encoding operators and the problems posed by the statistical character of the source of information are not dealt with here.

Finitely-determined operators are defined, their simplest characteristics are given, and their relation to the commonly defined operators is found. Ensembles of all the words of a given alphabet are defined similarly to what was done by Chomsky and Miller. The problem of one-to-one correspondence of any finitely-determined operators on any finitely-counted ensemble is reduced to the problem of one-to-one correspondence of

Card 1/2

Encoding by the use of ...

S/582/62/000,007:005:008

1011/1211

certain operator P (which coincides with the previous one on the investigated ensemble) for which the ensemble is one of essential words. The necessary and sufficient criterion for the one-to-one correspondence of any operator P on an ensemble of essential words is then proved. This criterion is formulated by a certain finite oriented graph, but this aspect is not expanded here. The criterion is used to prove the theorem that if P is of one-to-one correspondence on an ensemble of words not longer than n , as pre-determined for this given operator number, then it is of one-to-one correspondence on the whole ensemble of the encoded words.

There are 5 figures. The most important English-language references read as follows: Gilbert, E. N., Moore, E. F., Variable length binary encoding, *The Bell Syst. Technical J.*, 38, 4, 1959, 933-967; Chomski, N., Miller, G. A., Finite state languages, *Inf. and Control*, 1, 2, 1958, 91-112.

SUBMITTED June 27, 1960

Card 2/2

GLEBSKIY, Yu.V.

Optimization of production planning. Izv. vys. ucheb. zav.;
radiofiz. 6 no.5:1033-1051 '63. (MIRA 16:12)

I. Nauchno-issledovatel'skiy fiziko-tekhnicheskiy institut
pri Gor'kovskom universitete.

GLEBSKIY, Yu.V. (Ger'yay); SHEN'GHEIKO, V.V. (Sh'gheik)

Preparation of an optimum work schedule. In: *Tr. Vuz. 1963*, 1963, 1963, 23-
163. (NIA 1814)

GLECHYAN, K. A., Cand of Agric Sci -- (diss) "Fertilization of sugar beets in Armenian SSR." Yerevan, 1957, 20 pp. (Institute of Soil Sciences, Academy of Sciences Armenian SSR; Institute of Fodder, Ministry of Agriculture Armenian SSR) 120 copies (KL, 32-57, 94)

USSR/Cultivated Plants - Fodders.

M

Abs Jour : Ref Zhur - D.S.L., No 12, 1958, 53652

Author : Glechyan, M.A.

Inst : Armenian Scientific Research Institute for Animal
Husbandry and Veterinary Medicine

Title : The Effect of Mineral Fertilizers on the Yield of Some
Feed Cultures.

Orig Pub : Tr. Arm. n.-i. in-ta zhivotnovodstva i veterinarii,
1957, 2, 305-311

Abstract : This article describes the experiments conducted during
1953-1955 on the Kalinin Experimental Field under dry
farming conditions, and on the (kolkhozes collective
farms) of Artashatskiy and Azizbekovski Rayons under
irrigational conditions. The experiments dealt with the
fertilizing of corn, fodder beets, fodder cabbage and

Card 1/2

- 59 -

GLECHYAN, M.A.

When to apply mineral and organic fertilizers to sugar beets. Izv.
AN Arm. SSR Biol. i sel'khoz. nauki 10 no.1:93-100 Ja '57. (MLRA 10:4)

1. Institut zhivotnovodstva Ministerstva sel'skogo khozyaystva
Armenyanskoj SSR.

(FERTILIZERS AND MANURES) (SUGAR BEETS)

GLEDIN, A.

AID P - 1985

Subject : USNR/Aeronautics

Card 1/1 Pub. 135 - 9/70

Author : Gledin, A., Lt. Col.

Title : ~~Antiatomic defence of personnel and of aviation~~
operations

Periodical : Vest. voz. flota, 5, 52-57, My 1955

Abstract : The author lists and discusses various kind of passive antiatomic defence, such as: special individual clothing, gas masks, improvised and special shelters, ventilation, etc. He stresses the importance of antiatomic defence planning and training. He mentions also aircraft-protection from blast and the protection of fuel and water. Diagrams.

Institution: None

Submitted : No date

GLEICH
GLEICH, J. HALZBAUER, Zdenek, MUDr; GLEICH, Jaroslav, MUDr

Contribution to epidemiology of epidemic diarrheas in newborn and young infants. *Pediat. listy*, Praha 9 no.5:289-292 Sept-Oct 54.

1. Ustav epidemiologie and mikrobiologie. Reditel: Doc. Dr. Karel Raska (for Halzbauer) 2. I Porodnicka a ginekologicka klinika KU
Prednosta: Prof. Dr. Karel Klaus (for Gleich)
(DIARRHEA, in infant and child
epidemic, in Czech., statist.)

GLEICH, J.

"Acute Necrosis of the Pancreas During Parturition." p. 209.
(Casopis Lekarů Ceských. Vol. 93, no. 8, Feb. 1954. Praha).

East European Vol. 3, No. 6

4

SO: Monthly List of ~~Russian~~ Accessions, Library of Congress, June 1953, Uncl.

GLEICH, Jaroslav, MUDr

Effect of smoking and of drinking of coffee and alcohol in pregnancy on the fetus. Cas. lek. cesk. 93 no.36-37:1006-1012 10 Sept 54.

1. Z I. porodnicke K.U. Prednosta prof. Dr K.Flaus.
(SMOKING, effects, (COFFEE, effects,
on fetus in pregn.) on fetus in pregn.)
(ALCOHOL, ETHYL, effects,
on fetus in pregn.)
(PREGNANCY,
eff. of maternal smoking & drinking of coffee & alcohol
on fetus)
(FETUS,
eff. of maternal smoking & drinking of coffee & alcohol
in pregn. on fetus)

GLEICH, Jaroslav, MUDr; MALY, Vladimir, Mg.Mat.

Involution of the uterus after labor. Cesk.gyn. 20 no.2:125-129
Mar 55.

1. I. por. kl. KU Praha, prednosta prof. MUDr K. Klaus. U. org.
zdrav., prednosta prof. MUDr V. Prosek.
(UTERUS, physiology,
involution after labor)
(PUERPERIUM, physiology,
uterus involution)

1971
ENDOMETRIOSIS

GLANCH J. Zádvargyó of external endometriosis. *Acta Obstet. Gynec. Hung.* 1969, 18: 1-10.
A woman of 39, abdominal hysterectomy was performed for external endometriosis. Nine years previously, 14 days after delivery, a part of the placenta had been retained, and after that she had never menstruated, but had been suffering from colicky pains every month at the time of expected menstruation. The specimen showed the internal os dilated and the uterine cavity filled with old blood. This case is regarded as confirming Sampson's theory on the aetiology of external endometriosis by way of reflux and implantation.
Rolan - Valasské Meziříčí

GLEICH, Jaroslav

Excretion of pregnandiol after radical hysterectomy for carcinoma of cervix. *Cesk. gyn.* 36 no.3:207-210 1957.

1. *Gyn. klin. KU, prednosta prof. Dr. K. Klaus.*
(CERVIX NEOPLASMS, surg.
hysterectomy, radical, determ. of pregnandiol
excretion (Cz))
(PREGNANDIOL, in urine
determ. following radical hysterectomy in cancer of
cervix (Cz))

GLEICH, J.
GLEICH, Jaroslav, MUDr.; MALY, Vladimir, Mg. Mat.

Menstruation in maturing girls. Cesk. gyn. 22[37] no.1/2:40-47 Jan 58.

1. I. por. klinika KU v Praze, prednosta prof. Dr. K. Klaus.
Ustav organizace zdravotnictvi, prednosta prof. Dr V. Prosek. J. G.
Praha 2, Apolinarska 18.

(MENSTRUATION, statist.
in adolescent girls (Cz))

GLEICH, Jaroslav, MUDr.; MALY, Vladimir, Mg. Mat.

Parental factors in fetal weight. Cesk. gyn. 23 [37] no.3:196-194 Apr 58.

1. I. por. kl. KU, prednosta prof. Dr. K. Klaus --UOZ, KU, prednosta prof. Dr. V. Prosek. J. G. Praha II, Karlovo nam. 439.

(FETUS

weight, eff. of parental age, age-difference, body weight & height (Cz))

(PREGNANCY

duration, eff. of parental age, age-difference, body weight & height (Cz))

(AGING

age factor of parents in fetal weight (Cz))

(BODY WEIGHT

of parents, eff. on duration of pregn. & fetal weight (Cz))

(BODY HEIGHT

same)

GLEICH, Jaroslav; MALY, Vladimir

Relations between the season, conception, diseases of the mother before pregnancy, the duration of the pregnancy, the weight increase of the mother, and the weight and length of the fetus. Gesk. gyn. 23[37] no.5:386-389 July 58.

I. I. por. klin. KU, prednosta prof. Dr. K. Klaus. Ustav pro organisaci sdravotnictvi KU, prednosta prof. Dr. V. Prosek, J. G., Praha II, Karlove nam. 499.

(FETUS

weight & length, relation to various maternal factors (Cz))

(PREGNANCY, physiology

relation of various maternal factors on weight & length of fetus (Cz))

GLEICH, Jaroslav; MALY, Vladimir

The influence of bioclimatic factors on menstruation in adolescent girls. Sborn. lek. 60 no.5:152-164 May 58.

I. I. porodnicka klinika fakulty vseobecneho lekarstvi university Karlovy v Praze, prednosta prof. Dr. Karel Klaus Ustav organizace zdravotnictvi fakulty vseobecneho lekarstvi university Karlovy v Praze, prednosta prof. Dr. Vaclav Prosek. Dr. J. G., Praha 12, Nad Petruskou 6.

(WEATHER,

bioclimatic factors, influence on menstruation in adolescent girls (Cz))

(MENSTRUATION, physiology

influence on bioclimatic factors in adolescent girls (Cz))

(ADOLESCENCE, physiology

influence of bioclimatic factors on menstruation in adolescent girls (Cz))

GLEICHGEWICHT, B.; KUCHARCZYK, J.; STEINHAUS, H. (Wroclaw)

Remarks on numerical games. Zastos mat 5 no.1:21-33 '60. (EEAI 10:1)
(Games of chance (Mathematics))
(Poland--Lotteries) (Probabilities)

GLEICHGEWICHT, B.

Algebras with a quasi-involution. Bul Ac Pol mat 8 no.11/12:763-765
'60.

1. Instytut Matematyczny Oddzial Wroclaw, PAN. Presented by E. Marozewski.

(Algebra) (Involution)

GLEICHGEWICHT, B. (Wroclaw)

Some remarks on \mathcal{J} -rings. Col math 8 no.2:225-231 '61.

1. Matematicheskiy Institut Polskoy akademii nauk.

BARTKONTAKOWA, A.; GLEICHGEWICHT, B. (Wroclaw)

Characteristic number of syllables used by Polish authors in their writings. Zastos mat 6 no.3:309-319 '62.

1. Instytut Matematyczny, Polska Akademia Nauk, Warszawa.

GLEICHGEWICHT, B. (Wroclaw)

On algebras with a quasi-involution. Colloquium mathem 9 no. 1:
49-53 '62.

1. Mathematical Institute, Polish Academy of Sciences, Warsaw.

GLEICHENICHT, B. (Wrocław)

A remark on absolute-valued algebras. Col. math 11 no.1:
29-30 '63.

SECRET

CONFIDENTIAL

GLEICHGEWICHTOWA, Stefania (Walbrzych, ul. Czerwonego Krzyza 4)

Case of pneumonia with simultaneous appendicitis. *Pediat. polska* 32
no.8:933-934 Aug 57.

1. Z K Oddziału Dziecięcego Szpitala Miejskiego Nr 2 w Walbrzychu
Ordynator Oddziału: dr med. St. Gleichgewichtow.

(APPENDICITIS, in inf. & child
with pneumonia, case report (Pol))

(PNEUMONIA, in inf. & child
with appendicitis, case report (Pol))

GLEICHGEWICHTOWA, Stefania

Peritoneal reaction during generalized infections in newborn infants.
Pediat.polska 33 no.1:77-82 Jan 58.

1. Z Oddziału Dziecięcego Szpitala Miejskiego Nr 2 w Wnibrzychu
Dyrektor Szpitala; dr med. M. Ropak. Ordynator Oddziału: dr med.
St Gleichgewichtowa. Adres: Wrocław-Karłowice, Al. Kasprowicz
64/66 . Szpital Miejski Chorob Dziecięcych im. J. Korczaka.
(MICROCOCCIA INFECTIONS, in inf. & child
peritonitis in newborn (Pol))
(PERITONITIS , in inf. & child
micrococcal, in newborn (Pol))
(INFANT, NEWBORN, dis.
micrococcal peritonitis (POL))

POLAND/Physical Chemistry. Kinetics. Combustion. Explosions. Topochemistry. Catalysis. B

Abs Jour: Ref. Zhur. - Khimiya, No. 4, 1959, 11110

Authors : Krause A., Gleinert H., Gorgolewski L.,
Krezowski Z.

Inst : Not given

Title : Amphoteric Mixed Hydroxides as Models of Peroxidases of an Inorganic Nature.

Orig Pub: Roczn. chem., 1959, 32, No. 1, 139-142

Abstract: The mixed hydroxides, into the composition of which, together with the ions of Fe^{2+} , there enter the ions of Cu^{2+} and Co^{2+} , Cu^{2+} and Ca^{2+} or Cu^{2+} , Mn^{2+} and Ni^{2+} , reveal an important catalytic activity (CA) at the oxidation of HCOOH by hydrogen peroxide at 37° . The CA of mixed hydroxides is greater than the CA of the separate components, entering into its composition.

Card 1/2

GLIWITZ, GER.

Gliwice, Poland, 1957. Politechnika Slaska, Politechnika Slaska, 1945-1955.

P. 263

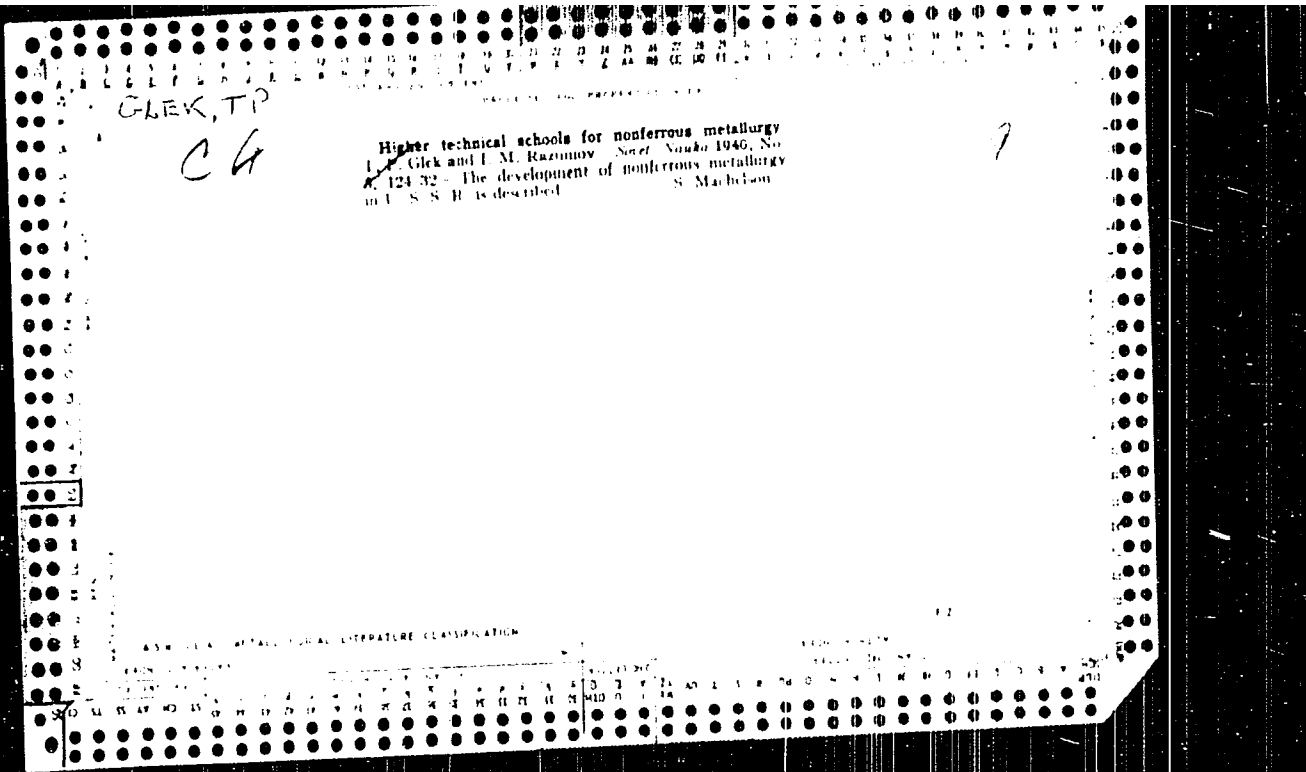
Monthly list of East European Accessions Index (EEAI), IC, Vol. 8, no. 6,
June 1959
uncla.

MEMORANDUM FOR THE DIRECTOR

Reference is made to the report of the Special Agent in Charge, New York, dated 11/17/54, and the report of the Special Agent in Charge, New York, dated 11/18/54.

GLENNER, Ted-unk

For proper organization of series, opinions in case of
disability. Inca mscap. pol 6 no. 11:13-14 11 104.



BAYKONUROV, O.A.; BELYAYEV, A.I.; BOGOMOLOV, V.I.; VANTUKOV, V.A.; GAZARYAN, L.M.;
GLEK, T.P.; GORYAYEV, M.I.; KARCHEVSKIY, V.A.; KLUJSHIN, D.N., KUNAYEV,
D.A.; LEBEDEV, B.N.; LISOVSKIY, D.I.; LOSEUTOV, P.M.; MITROPANOV, S.I.;
MOLGHANOV, A.A.; MOSKVITIN, I.N.; OL'KHOV, N.P.; OSIPOVA, T.B.;
PLAKSIN, I.N.; PONOMAREV, V.D.; RUMYANTSEV, M.V.; SOKOL'SKIY, D.V.;
SOKOLOV, M.A.; SPASSKIY, A.G.; STRIGIN, I.A.; SUSHKOV, K.V.;
SHAKHNAZAROV, A.K.; YASYUKOVICH, S.M.

Khosrov Kurginovich Avetisian, obituary. TSvet.met.27 no.3:66-68
My-Je '54. (MIRA 10:10)

(Avetisian, Khosrov Kurginovich, 1900-1954)

AKIMOVA, K.I.; BAZHENOV, M.F.; BAKHVALOV, G.T.; BEZKLUBENKO, N.P.; BERMAN, S.I.;
BOGDANOV, Ye.S.; BODYAKO, M.N.; BOYKO, B.B.; VINOGRADOV, S.V.;
GAGEN-TORN, K.V.; GLEK, T.P.; GOREV, K.V.; GRADUSOV, P.I.; GUSHCHINA, T.N.;
YEMEL'YANOV, A.K.; YESIKOV, M.P.; ZDZYARSKIY, A.V.; ZAKHAROV, M.V.;
ZAKHAROVA, M.I.; KARCHEVSKIY, V.A.; KOMAROV, A.M.; KORZHENKO, O.T.;
LAYNER, V.I.; MAL'TSEV, M.V.; MILLER, L.Ye.; MILOVANOV, A.I.;
MIRONOV, S.S.; NIKONOROVA, N.A.; OL'KHOV, N.P.; OSIPOVA, T.V.;
OSOKIN, N.Ye.; PERLIN, I.L.; PLAKSIN, I.N.; PROKOF'YEV, A.D.;
RUMYANTSEV, M.V.; SEVERDENKO, V.P.; SHREDIN, P.I.; SMIRYAGIN, A.P.;
SPASSKIY, A.G.; TITOV, P.S.; TURKOVSKAYA, A.V.; SHAKHNAZAROV, A.K.;
SHPICHINETSKIY, Ye.S.; YURKSHTOVICH, N.A.; YUSHKOV, A.V.;
YANUSHEVICH, L.V.

Sergei Ivanovich Gubkin. TSvet.met. 28 no.6:60-61 N-D '55. (MIRA 10:11)
(Gubkin, Sergei Ivanovich, 1893-1955)

3-2-2/32

3 1 2 1 1 1

AUTHOR: Glek, T.P., Dotsent and Director of Institute for Non-Ferrous Metals and Gold imeni M.I. Kalinin

TITLE: Some Problems of Ideological Education (Nekotorye voprosy ideynoy-vospitatel'noy raboty)

PERIODICAL: Vestnik vysshey shkoly, Feb 1957, # 2, p 6-13 (USSR)

ABSTRACT: The author states that nobody can deny the irrefutable fact that none of the universities in the world supply a greater number of engineers than those of the USSR, and that the quality of training in the USSR is increasing from year to year. But the most remarkable achievement is the type of the specialist trained in the Soviet higher educational institutions, who is imbued with a Marxist-Leninist conception of life, supremely loyal to his nation and capable of realizing the party's policy. The 20th Congress of the Communist Party has set for the higher schools the task of increasing the quality of training of specialists and this calls for a further improvement in organization of training and educational work. The government decisions, creating favorable conditions for the scientific research and teaching in the

Card 1/3

Some Problems of Ideological Education

3-2-2/32

higher schools, served as preliminaries for issuing the instructive letter of the Ministry of Higher Education, # K-100 containing basic principles for the work of the higher schools. It set faculty strengths, reduced some compulsory lessons, and established a new ratio between class work and independent work. Gradually, centralization of administration of the higher schools is being eliminated; the councils of higher schools, their directors and deans of faculties have greater independence in deciding questions, and the granting of stipends to students is based on new principles. The author then refers to teachers who underrate the necessity of changing the methods of training or who give the instructions a unilateral interpretation, and then deals with questions which the teaching staff can decide itself and with those on which it has to contact the Ministry. The leaders of the higher schools must support and abet everything that is sound, progressive and promotes the preparation of specialists. The author states that only a proper understanding of international and internal events will improve the teaching of Marxism-Leninism and increase still more the power of its educational influence. The character of work has now changed: there are no compulsory subjects for discussion, any subject of in-

Card 2/3

Some Problems of Ideological Education

3-2-72

terest can be used. Instead of agitators, teachers have been assigned to assist in organizing the group work. This refers to the author's institute. He also points out here the mistakes made, which have caused some of the groups to hold no meetings at all during the entire first semester of the year. The author also pleads for a closer co-operation with the Komsomol in the educational institutions. In his institute and in many others every fifth student is a Komsomolets and is detailed by his organization to assist the director, the dean and the Professorial Chairs in their work. In connection with the new method of granting scholarships to students, the institute director had a meeting with the members of the students' professional organization, who with the Komsomol activists constitute the majority in the scholarship commission. In conclusion the author emphasizes the necessity of mobilizing the entire faculties of the higher educational institutions for the ideologic-educational work of the students.

ASSOCIATION:

Moskva Institute of Non-Ferrous Metals and Gold imeni M.I. Kalinin (Moskovskiy institut tsvetnykh metallov i zolota imeni M.I. Kalinina)
Library of Congress

AVAILABLE:
Card 3/3

G. N. P.

AUTHOR: Glek, T.P., Candidate of Economic Sciences, Dotsent 3-10-12/30

TITLE: The Experiences of Vtuze in Training Young Specialists in Economics (Opyt ekonomicheskoy podgotovki molodykh spetsialistov vo vtuze)

PERIODICAL: Vestnik Vysshey Shkoly, 1957, # 10, pp 47 - 54 (USSR)

ABSTRACT: The author states that the training in economics at the Moscow Institute of Nonferrous Metals and Gold was treated at various Party meetings, but that no marked results were reached. Some progress was made only after the XXth Party Congress took place.

The main subjects of the established program are: the improved teaching of political economy as a theoretical discipline, improved courses in industrial economy, and the introduction of problems relating to economics and industrial organization in special technical disciplines. These three subjects must be coordinated to show satisfactory results. The author goes on to describe the work done along these themes.

The chair of Political Economy at the Moscow Institute of Nonferrous Metals and Gold is headed by F.M. Drobyshev.

The training of engineers in economics required increased qualifications of teachers in technical disciplines. For this purpose teachers work in economic seminars where they investigate

Card 1/2

3-10-12/30

The Experiences of Vtuzes in Training Young Specialists in Economics

problems of economics. Last year 3 professors and 7 dotsents worked in the economics seminar of the Faculty of Prospecting Geology, headed by Professor S.A. Pervushin, Doctor of Economic Sciences, holding the Chair of Industrial Economy. These seminars are very useful for the teachers of technical disciplines.

The collaboration of technical and economic chairs is an established feature of this Moscow Institute. So, e.g. Pervushin assisted a lecture by Professor A.A. Tsaydler on "Mining and Reverberatory Melting in the Copper Industry". Economic problems of industrial processes are at present already contained in lectures and textbooks, as e.g. economic subjects treated in a lecture given by Professor A.I. Belyayev on "Metallurgy of Light Metals". Economic problems are also dealt with in the course "Enrichment of Mineral Products". As a result of the mentioned measures, many diploma projects of the last two years show marked improvements in the economic training of engineers and the influence of economics in the solution of technical problems.

ASSOCIATION: The Moscow Institute of Nonferrous Metals and Gold imeni M.I. Kalinin (Moskovskiy institut tsvetnykh metallov i zolota imeni M.I. Kalinina)

AVAILABLE: Library of Congress

Card 2/2

AFONCHENKO, M.Ye.; AVDEYEV, P.L.; GLEKEL', B.A.

Hydraulic beater with horizontal rotor shaft. Bum.prom.32
no.9:22-23 S '57. (MIRA 10:12)

1. TSellyulczno-bumazhnyy kombinat "Gercy truda."
(Papermaking machinery)

KANTSEPOL'SKIY I.S.; GLEKEL', F.L.; KOLONTSAROV, I.Kh.

Effect of the density of cement stone on the corrosive processes
in glinite-portland cement during sulfate aggression. Kor. tr. in.
i mery bor'by s nei no.1:128-140 '61. (MIRA 1712)

TASHPULATOV, Yu.T. [deceased]; GLEBA', E.L.; ZOLICHNEV, I.Kh.

Obtaining sulfate resistant siliceo-portland cement under industrial conditions. Kor. tsem. i very bor'by s noi no.1:121-154
'61. (MIRA 17:2)