

**LEWICKA-URBANSKA, Barbara**

Hypoderma bovis as a cause of meningitis in a child. Pediat.polska  
30 no.1:61-63 Jan 55.

1. Z Oddziału Dziecięcego Szpitala Powiatowego w Pulawach. Dyrektor szpitala: lek. B.Kuzma, Ordynator Oddz. Dziecięcego: lek. B.Lewicka-Urbanska. Pulawy, Dabrowskiego 14.

(MENINGITIS, etiology and pathogenesis,  
Hypoderma bovis infect. in child.)

(FLIES,  
Hypoderma bovis larvae causing meningitis in child.)

GERKOWICZ, Teresa; LEWICKA-URBANSKA, Barbara

Kidneys in rheumatic disease. Polski tygod. lek. 15 no.46:1770-1772  
14. II '60.

1. Z Kliniki Chorob Dzieci A.M. w Lublinie; kierownik: doc. dr  
Witold Klepaeki.

(RHEUMATIC FEVER physiol)  
(KIDNEY FUNCTION TESTS)

LEWICKA-URBANSKA, Barbara

Contribution to clinical and diagnostic aspects of urinary lithiasis in children according to our material. *Pediat.polska* 35 no.7:779-785 J1 '60.

1. Z Kliniki Chorob Dzieci A.M. w Lublinie Kierownik: doc. dr med.  
W.Klepacki [deceased]  
(URINARY CALCULI in inf & child)

SURNAME, Given Names

Country: Poland

Academic Degrees: [not given]

Affiliation: Clinic of Children's Diseases of the Medical Academy (Klinika Chorob Dziecięcych, Akademia Medyczna), Lublin; Director (Kierownik): Doc Dr W Klepacki, recently deceased

Source: Krakow, Przegląd Lekarski, Vol XVII, Ser II, No 10, 1961, pp 366-370

Data: "Collagenosis in the Pediatric Clinic."

(2)

GPO 981643

GERKOWICZ, Teresa; LEWICKA-URBANSKA, Barbara; PIETRON, Kazimierz

Infections of the urinary system in children. *Pediat. pol.* 36  
no.7:731-741 '61.

1. Z Kliniki Chorob Dzieci AM w Lublinie Kierownik: prof. dr. med.  
W.Klepcki [deceased] i z Zakladu Radiologii AM w Lublinie Kierownik:  
prof. dr med. K. Skorzynski.  
(URINARY TRACT INFECTIONS in inf & child)

62-11111-11A - BELGIUM, BARCELONA

16 JUL 1951

23

217

Enkov, Enkova, Vol. XVIII, Series II, No. 5, 52.

1. "Pathogenesis of the Influence of Infective Factors on Purpura Maligna," Madzyski S., Journal of the Institute of General Pathology of the Academy of Medicine of Poland (Zaklad Patologii Ogolnej Akademii Wiedzy w Gdanisku), director: Prof. Wladyslaw Szredura, Vol. 1, pp. 205-208.
2. "Evaluation of Laboratory Research in Acute Rheumatic Disease," Anna Kowalska-Zajacka, pp. 208-211.
3. "Alterations in Brain Ganglions of Vasculitis Origin, Arteries Particularly the Striated Body in the Course of Purpura Maligna and C. Eburnacea," of the Institute of Pathology of the Institute of Pathology of the Faculty of Medicine of the University of Medicine of Lodz (A.M. V. Lodz), director: Prof. Wladyslaw Szredura, pp. 211-213.
4. "Preventive Treatment of Rheumatoid Disease and other Blood Vessel Contributing Diseases by Means of the Simultaneous Application of Hypertensive and Vasodilator-Induced Therapy," Wladyslaw Szredura, pp. 213-217.
5. "The Vascular Post in Patients with Epidemic Hemorrhagic Disease," Nieczyslaw Zajacki, of the Department of Infectious Diseases of the City Hospital of Lodz (Zaklad Chorob Zespilanych Wzrostku i Ciężarow), director: Prof. Dr. E. Czajkowski, pp. 217-219.
6. "An Essay on the Graphic Representation of a 'Vasculitis' (Disease) of the Laboratory (Laboratorium) 52. (un-identified) No. 1 of the Academy of Medicine of Lodz (A.M. V. Lodz), director: Prof. Wladyslaw Szredura, pp. 219-221.
7. "Letter in Visceral Diseases," Harold L. Hirsch, Journal of the American Medical Association, Vol. 117, No. 11, pp. 221-224.
8. "The Case of Purpura Maligna," Wladyslaw Szredura, of the Second Pediatric Clinic of the Academy of Medicine of Poland (Zaklad Pediatryczny Akademii Wiedzy w Szczecinie), director: Prof. Dr. Antoni Belonowicz, pp. 224-227.

LEWICKA-URBANSKA, Barbara

A case of diabetes insipidus in Hand-Schueller-Christian disease.  
Pediat. pol. 37 no.11:1221-1224 '62.

1. Z Kliniki Chorob Dzieci AM w Lublinie Kierownik: doc. dr med.

A. Sokolowska-Dekowa.

(DIABETES INSIPIDUS)

(HAND SCHUELLER CHRISTIAN SYNDROME)

LEWICKI, ANDRZEJ.

Mechanizm odrozniania w swietle nauki Pawlowa. Poznan,  
Panstwowe Wydawn. Naukowe. 1955. 69 p. (Poznanskie Towarzystwo  
Naukowe. Komisja Filologiczna. Prace, t. 8, zasz. 1)

SOURCE: East European Acession List (EEAL) Library of Congress  
Vol. 5, no. 8, August 1956



LEWICKI, A.; KUBINSKA, H.; KULIKOWSKA, A.; LUKOMSKA, A.

Psychological studies on the mental state of patients treated with geriocaine. Neurol. neurochir. psychiat. pol. 12 no.1:63-66 '62.

1. Z Katedry Psychologii Ogolnej Uniwersytetu M. Kopernika w Toruniu  
Kierownik: prof. dr A. Lewicki i Sanatorium Geriatrycznego w Inowro-  
clawiu Dyrektor: dr B. Snarski.

(GERIATRICS)

LEWICKI, A., prof. dr; KUBINSKA, H.; KULIKOWSKA, A; LUKOMSKA, A.

Psychological studies on the psychic state of patients treated with Geriocaine. Neurol neurochir psych 12 no.1:63-66 Ja-F '62.

1. Katedra Psychologii Ogólnej, Uniwersytet M. Kopernika, Torun;  
Kierownik: prof. dr A Lewicki; i Sanatorium Geriatryczne, Inowroclaw;  
Dyrektor: dr B. Snarski.

WITEKOWA, Stanisława; LEWICKI, Andrzej

Kinetics of the reaction between iodine and sulfur dioxide at  
the liquid-liquid interface. *Recz chemii* 37 no.1:91-107 '63.

1. Zakład Chemii Ogólnej, Politechnika, Łódź.

LEWICKI, Andrzej, prof. dr

Stefan Blachowski's works on clinical psychology. Przegl  
psychol no. 6: 30-40 '63.

Main problems of clinical psychology. Ibid.:67-87.

1. Kierownik Katedry Psychologii Klinicznej, Uniwersytet im.  
Adama Mickiewicza, Poznan.

\*

LEWICKI, B.

Kacner, A.; Lewicki, B.

"Proper Dimensions of Hollow Ceramic Blocks Used for Ceilings." p. 428  
(Inzyniera I Budownictwo, Vol. 10, No. 12, Dec. 1953, Warszawa)

SO: Monthly List of East European Accessions, Vol. 3, No. 6, Library of Congress, June,  
1954, Uncl.

3

POL.

✓1302. Kacner, A., and Lewicki, B., Nonuniformly heated beams on elastic foundation (in Polish), Inżyn. Budown. 11, 4, 122-128, Apr. 1954.

A few special problems of beams on elastic foundations (simply supported at some points or without supports) and with non-uniform temperature distribution through the thickness of the beams, assumed to be linear, have been solved. Numerical illustrative examples supplement theoretical solutions.

R. M. Evan-Iwanowski, USA

*EGP JH*

LEWICKI, Bohdan

"Building Structures; Needs and Progress," by Wacław Zenczykowski and Bohdan Lewicki, corresponding member of the Polish Academy of Sciences, and member of the Land Engineering Committee of the Polish Academy of Sciences, respectively. Nauka, Polska, No. 1(13), 4th Year, Warsaw, Polish Academy of Sciences, 1956.

LIMICKI, B.

Report on a conference concerning technological progress in building construction at Miedzyzdroje.

P. 353 (ARCHIWUM INŻYNIERII LAYOWEJ) Poland, Vol. 2, No. 3, 1956

SO: Index of East European Accessions (AEEI) Vol. 6, No. 11, November 1957



LEWICKI, B.

A report on the discussion of the Scientific Conference of the Committee on Civil Engineering of the Polish Academy of Sciences concerning the progress in prestressed and prefabricated constructions. p.182.

(ARCHIWUM INZYNIERII LADOWEJ. Vol. 3, No.  $\frac{1}{2}$ , 1957. Warszawa, Poland)

SO: Monthly List of East European Accessions (EEAL) LC. Vol. 6, No. 10, October 1957. Uncl.

LEWICKI, B.

Large-panel building made of Zeran bricks; construction problems. p. 365.

INZYNIERIA I BUDOWNICTWO. Warszawa, Poland. Vol. 16, no. 9, Sept. 1959.

Monthly List of East European Accessions (EEAI) LC, Vol. 9, no. 2, Feb. 1960.  
Uncl.

LEWICKI, Bronislaw

Engineer Waszkowski's new carding machine. Przegl techn no.44:6  
2 N '60.

LEWICKI, Bronislaw

Planning based on weight of the production is a risky, undetermined effort; production of the Lower Silesian Metallurgical Works in Nowa Sola. Przegl techn no.48:3 30 N '60.

LEWICKI, Bohdan, doc. dr inż.

Designing of joints and protection of large-panel outer walls from penetration of rain. Inż i bud 19 no.3:Suppl.: Maly por konstr 3 no.2:5-12 Mr '62.

1. Instytut Techniki Budowlanej, Warszawa.

LEWICKI, Bohdan, doc. dr inż.

Designing of joints and protection of large-panel outer walls  
from penetration of rain. Inż. i bud 19 no.5:Suppl.: Maly por  
konstr 3 no.3:22-24 My '62.

1. Instytut Techniki Budowlanej, Warszawa.

LEWICKI, Bohdan, doc. dr (Warszawa)

Problems of the apartment building industry. Przegl budowl i bud  
mieszk 34 no.1:13-16 Ja '62.

LEWICKI, Bohdan, doc. dr.; ZIELINSKI, Jerzy, mgr inż.

Rigidity of ceilings made of prefabricated floor panels subjected to bending. Inż i bud 20 no.6:189-192 Je '63.

1. Instytut Techniki Budowlanej, Warszawa.



LEWICKI, Bohdan, doc. dr.; KUBICKI, Jan, mgr inz.;

Calculation of deflections of reinforced concrete structures under longlasting loads according to Professor I.I. Ulicki's method. Inz i bud 20 no.11:434-440 N '63.

1. Instytut Techniki Budowlanej, Warszawa.

LEWICKI, Bohdan, doc. dr.; CHOLEWICKI, Andrzej, mgr inż.

Rain chamber tests of tightness of joints in large-panel walls.  
Inst tech bud biul inf no.17:52-57 '64.

1. Department of Concrete and Ferroconcrete Structures and of  
Industrial Building of the Institute of Civil Engineering, Warsaw.

LEWICKI, Bohdan, doc. dr inż.; KOBYLINSKI, A. prof.; CZUDEK, Henryk,  
dr inż.

New books reviewed. Inz 1 bud 21 no.5:182-183 My '64.

LEWICKI, Bohdan

Planned solutions of material and construction problems in industrial building during the years 1965-1970 and their prospects. Praca budowl i bud mieszk 27 [i.e. 37] no.3:140-144 Mr '65.

1. Institute of Construction Engineering, Warsaw.

BRODNIEWICZ, A.; LEWICKI, C.; SZUBER, T.

Studies on the population of rats within the territory of the city of Torun. Roczn panstw zakl hig 14 no.1:9-16 '63.

1. Department of Disinfection, Disinfestation and Deratization, State Institute of Hygiene, Warsaw, and Sanitary and Epidemiological Station of the City of Warsaw.

LEWICKI, Cz

Q-2

POLAND / Farm Animals. Cattle

Abs Jour : Rof Zhur-Biol., No 6, 1958, 26115

Author : Szogokin-Krotow W., Lewicki Cz., Trzaskowski J.

Inst : Not givon

Title : The Studies of the Polish Red Brood Cattle of the Wysokio Mazowieckio District (Issledovaniya pol'skogo krasnogo krupnogo rogatogo skota Vysoko-Mazovetskogo uyozda)

Orig Pub : Roczn. nauk rolniczych, 1955, D72, 223 s.

Abstract : The article presents a vast monograph-size study, containing characteristics of the climatic, soil, and economic conditions of raising these cattle, of its milk productivity and live weight, of the related family groups and strains, as well as data on the cows and bulls of the herd. The Polish Red cattle is most suitable under conditions prevailing

Card 1/2

9

LEWICKI, Czesław

Biological value of protein in certain forms of fish waste.  
Zesz probl post nauk roln no.54:75-79 '64.

Fish waste in feeding pigs. Pt. 5. Ibid.:131-136

1. Department of Animal Feeding of the School of Agriculture,  
Olsztyn-Kortowo.

LEWINOWSKI, Czeslaw

Economic calculation of modernizing pavements depending on the increase of traffic. Budown Gliwice no. 9:67-80 '63.

1. Katedra Komunikacji Miejskich, Politechnika, Gliwice.



LENICKI, E.

New development in reinforced concrete and concrete construction in Germany. Tr. from the German. p. 508.

(MELEPITESTUDOMANYI SZEMLE. Vol. 4, no. 10, Oct. 1954. Budapest.)

SO: Monthly List of East European Accession. (EEAL). Lc. Vol 1 Nov. 11 Nov. 1955 Uncl.

LEWICKI, E.

Recent tests on steam curing of concrete to accelerate the increase of its strength. In German. p. 45.

ACTA TECHNICA. (Magyar Tudományos Akademia) Budapest, Hungary.  
Vol. 26, no. 1/2, 1959.

Monthly List of East European Accessions (EEAI) LC, Vol. <sup>8</sup>~~26~~, no. <sup>12 Dec.</sup>~~1/2~~, 1959.  
*Uncl*

POCZEKAJ, Jan; WENCLEWSKI, Alojzy; ~~LEWICKI, Jannaz~~

Electrophoretic studies on proteins in the amniotic fluid. Polski tygod.lek. 15 no.50:1915-1917 12 D '60.

1. Z Oddzialu Ginekologiczno-Polozniczego Szpitala MSW w Poznaniu;  
ordynator: dr med. Jan Poczekaj.  
(PROTEINS chem)  
(AMNIOTIC FLUID chem)

WAJDA, Zdzislaw; LEWICKI, Kazimierz

Spontaneous bleeding into the peritoneal cavity from the cystic artery. Pol. przegl. chir. 34 no.1:59-60 '62.

1. Z III Kliniki Chirurgicznej AM w Gdansk Kierownik: prof. dr  
Z Kieturakis. (GALLEBLADDER dis) (HEMORRHAGE)

LEWICKI, Kazimierz; JANUKOWICZ, Celestyn

Testicular reticulosarcoma. Pol. tyg. lek. 20 no.10:361-362  
8 Mr '65.

1. Z III Kliniki Chirurgicznej (Kierownik: prof. dr. Zdzislaw  
Kieturakis) i z III Kliniki Chorob Wewnętrznych Akademii Medycy-  
nej w Gdansk (Kierownik: prof. dr. Mieczyslaw Gamski).

ZWYKIELSKI, Grzegorz; TYMINSKI, Witold; LEWICKI, Kazimierz

Postoperative hemorrhage caused by fibrinogene deficiency.  
Pol. przegl. chir. 37 no. 12:1299-1309 D ' 65

1. Z III Kliniki Chirurgicznej AM w Gdansk (Kierownik: prof. dr. Z. Kieturakis) i z III Kliniki Chorob Wewnetrznych AM w Gdansk (Kierownik: prof. dr. M. Ganski).

FOLAND

LEWICKI, Piotr, Mgr inz.

Assistant in the Dept. of Agro-Food Industry Technology, Central  
Higher Agricultural School (asystent Katedry Technologii Przemyslu  
Rolno-Spozywczego Szkoły Glownej Gospodarstwa Wiejskiego), Warsaw

Wroclaw, Wiadomosci chemiczne, No 1, January 1966, pp 47-58

"Flavonoids in food technology."

LEWICKI, R.

Agricultural machinery and implements. p. 228.

PRZEGLAD MECHANICZNY. (Stowarzyszenie Inzynierow i Technikow Mechanikow  
Polskich) warszawa. Poland. Vol. 17, no. 5, May 1958.

Monthly List of East European Accessions (EEAI) LC, Vol. 9, No. 2, Feb. 1959.

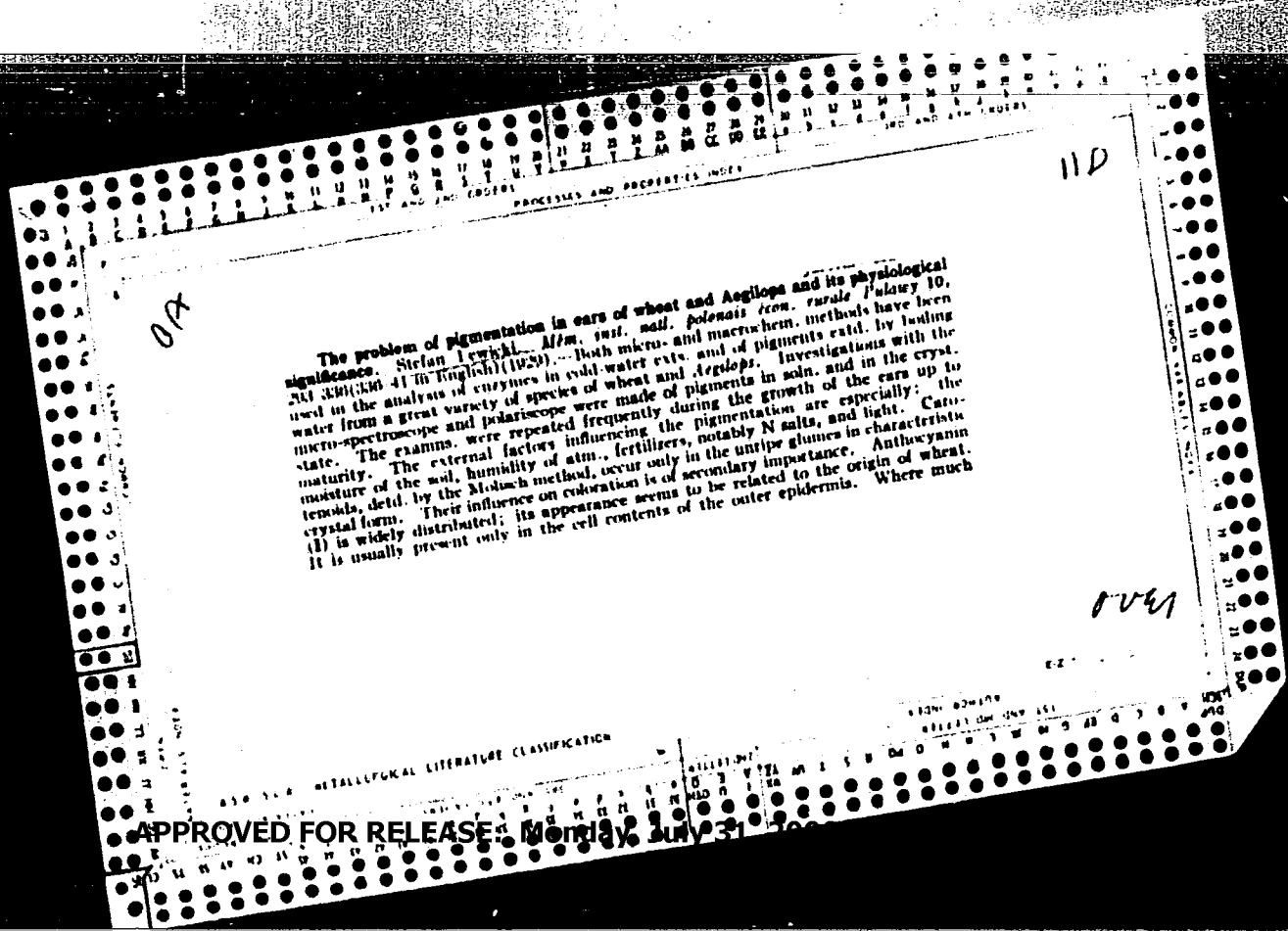
Uncla.



LEWICKI, Kazimierz; DZOGA, Maria

Eosinophilic granuloma of the stomach. Pol. przegl. chir. 36  
no.10:1217-1219 0 '64

1. Z III Kliniki Chirurgicznej Akademii Medycznej w Gdansku  
(Kierownik: prof. dr. Z. Kieturakis).



07

110

The problem of pigmentation in ears of wheat and *Aegilops* and its physiological significance. Stefan Lewycki. *M/m. Inst. natl. polonais Icon. evolut. Polony 10, 201 (1911:310-41) in English (1929)*. --Both micro- and macrochem. methods have been used in the analysis of enzymes in cold-water cuts and of pigments extd. by boiling water from a great variety of species of wheat and *Aegilops*. Investigations with the micro-spectroscope and polariscope were made of pigments in soln. and in the cryst. state. The exams. were repeated frequently during the growth of the ears up to maturity. The external factors influencing the pigmentation are especially: the moisture of the soil, humidity of atm., fertilizers, notably N salts, and light. Carotenoids, detd. by the Mohr method, occur only in the unripe glumes in characteristic crystal form. Their influence on coloration is of secondary importance. Anthocyanin (A) is widely distributed; its appearance seems to be related to the origin of wheat. It is usually present only in the cell contents of the outer epidermis. Where much

over

METALLURGICAL LITERATURE CLASSIFICATION

It is present it may also be seen in the parenchymatous tissue of the glume and in the inner bundle sheath. The flavones are found in the glucosidal form in white glumes, in the free state in red varieties and in black glumes in both forms. Pure free flavones are present in the pinkish red varieties with black awns. The following reactions are used to distinguish them. (a)  $FeSO_4$  does not ppt. the cell contents of the epidermis in the pinkish red varieties, while pptn. occurs in the brownish red forms; (b) a satd.  $(NH_4)_2SiO_4$  soln. in  $NH_4Cl$  produces a bright red color in the glumes of the brownish red varieties, while with pinkish red glumes little or no color is produced. Flavones occur in small amt. in *Aeglops*. Two different groups of tannins are present: pyrogallol (II) in the brownish red glumes and catechol (III) in the white and black ones. Both groups of tannins readily absorb O, the 1st becoming brown, the 2nd black by the formation of phlobaphenes, as shown artificially by heating exts. of the glumes with  $H_2SO_4$ . Both groups of tannins can be distinguished, even in green glumes, by the following microchem. reactions:  $FeSO_4$  produces with the III group greenish coloration of the cell walls only, while a brownish color in the cell contents is produced with II tannins, which may be pptd.  $NH_4$  molybdate in  $NH_4Cl$  causes a bright red coloration in a short time in the II group.  $KCN$  soln. (3%) gives the same coloration very quickly, this being the best reaction when the glumes are green. Pink coloration is obtained by the soln. of I in  $KI + 10\% NH_4OH$ . The chem. nature of the different colors of the glumes and in the grain of wheat is indicated. The full appearance of pigmentation is dependent upon 2 internal factors, the presence of tannin and corresponding amt. of oxidases. The most vigorous activity of the oxidases is during the period preceding the development of pigments. The physiol. significance of pigmentation of ears can be understood on the basis of great ability of tannins to absorb O. This leads to increased respiratory activity and to more intensive metabolic processes. T. K.

PROCESSES AND PROPERTIES

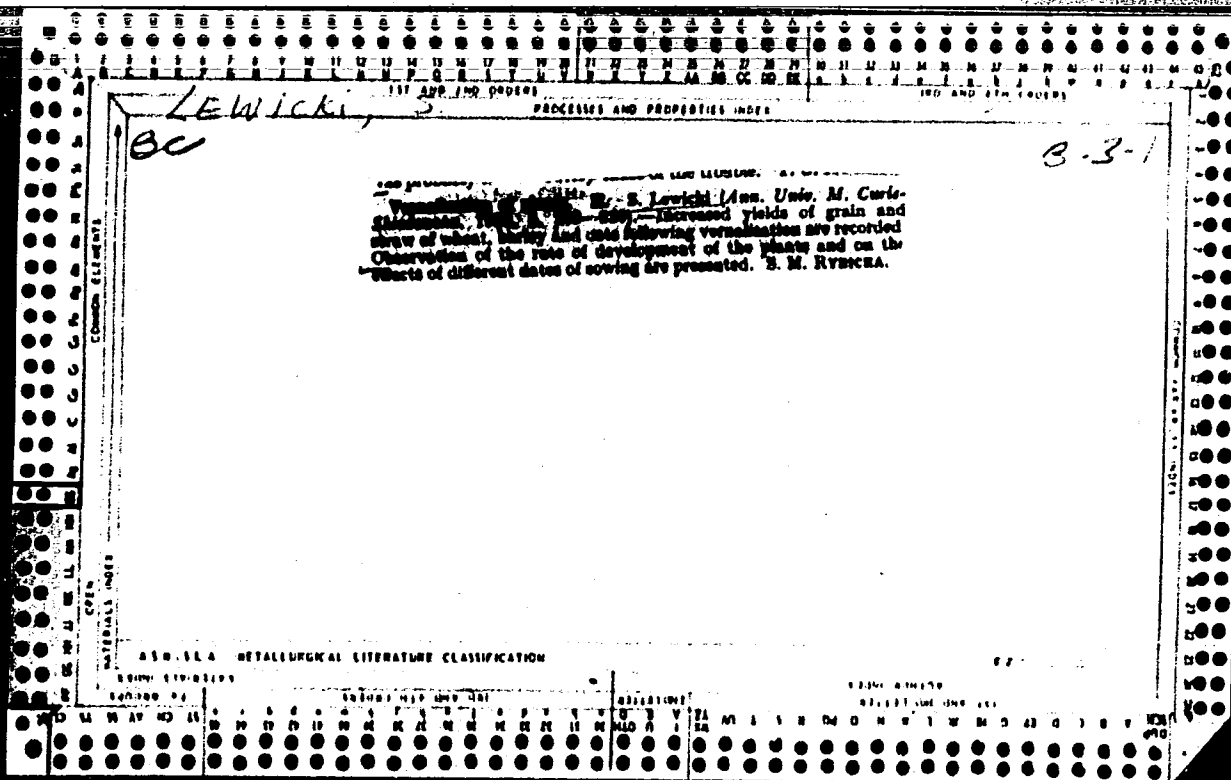
110

CPX

**Pigments in barleys and oats.** *Stefan-Lowicki. Mm. inst. natl. polonais (con. rurale Pulawy 10, 342-30(350-62 in English)(1929); cf. preceding abstr.—Four types of pigmentation in the ears of barley can be distinguished: ears white and yellow, ears black without anthocyanin (I), ears violet with much I remaining until maturity and ears black with much I in the immature state. No flavones have been found in the glumes, and carotenoids in only very small quantities. Micro- and macro-chem. tests at 3-4 different stages in the development of the varieties listed led to the conclusion that catechol tannins being oxidized produce phlobaphenes which cause black coloration. The oxidizing enzymes maintain their full activity until the development of pigmentation is complete. The chem. nature of the different colors of the glumes of barley and oats and in the grain of barley is also indicated. The role of light in the formation of black pigment in barley is unimportant. Pigments of oats, like those of barley, are present in the flowering glumes, never in the empty glumes. Unlike wheat, *Aegilops* and barley, oats contain no I in the glumes at any stage of development. The action of oxidizing enzymes in oats is similar to that in barley and wheat. The factors controlling pigmentation are identical in wheat, *Aegilops*, barley and oats. J. K.*

AS 6-51 A METALLURGICAL LITERATURE CLASSIFICATION

E 2



Lewicki, S.

Winter wheat and rye under various conditions of production and environment. S. Lewicki (*Ann. Univ. M. Curie-Skłodowska*, 1952, 1, L, 330-416). This study comprises the results of 10 years of research at 14 Research Stations and establishes the grounds for increasing the acreage under wheat cultivation at a cost of reducing the acreage occupied by rye. It is found that under identical conditions of environment, fertilization, and cultivation but with different preceding crops (rye following cereals, wheat following legumes), the increase in grain yield for wheat in comparison with that of rye is stable and relatively highest, irrespective of location. Apart from severe winters, which always bring a decrease in crops, cold and dry springs have an adverse effect on wheat yields; in the case of rye this results in a decrease of straw yield. Normally, regardless of soil, the straw yields for best chosen varieties are much the same for rye as for wheat.

S. R. Lachowicz

LEWICKI, S.

Journal of the Science  
of Food and Agriculture  
March 1954  
Agriculture and Horticulture

Vernalisation of plants. III. S. Lewicki and M. Ruszkowski  
(Ann. Univ. M. Curie Sklod., 1952, 7, Sect. E, 59-74).—Results  
of field and laboratory studies of the effects of vernalisation on  
different varieties of wheat, barley, and oats are reported. Ver-  
nalisation induced modification of some plant parts and increased  
the grain yields in all the studied cases and the straw yields in  
a majority of them. S. K. LACHOWICZ.

LEWICKI, T. (Szczecinek)

Field instruction in Szczecinek. Przegl geod 34 no.11:478 N '62.



LEWICKI, Tadeusz

From the activities of the Koszalin Branch of the Association  
of Polish Geodesists. Przegl geod 35 no. 12: 525-526 D '63.

LEWICKI, Tadeusz (Szczecinek)

Useful instruction for surveyors of the administration of  
agriculture. Przegl geod 37 no.3:121 Mr '65.

**"APPROVED FOR RELEASE: Monday, July 31, 2000**

**CIA-RDP86-00513R000929710**

**APPROVED FOR RELEASE: Monday, July 31, 2000**

**CIA-RDP86-00513R000929710C**

LEWICKI, WLADYSLAW

Witold Tomassi and Wladyslaw Lowicki: "Potentiometric Investigation of the Adsorption Isotherms, Roczniki Chemii, Vol 30, No 3, Warsaw, 1956. Published from the Chair of Physical Chemistry, Warsaw Polytechnic, 23 Apr 56.

6.7. W. Lewicki, et al.  
POLAND/Physical Chemistry - Surface Phenomena, Adsorption, Chromato-  
graphy, Ion Interchange.

B-13

Abs Jour: Referat. Zhurnal Khimiya, No 2, 1958, 4000.

Author : W. Lewicki.

Inst :

Title : Potentiometric Determination of Adsorption Isotherms. Part III.

Orig Pub: Przem. chem., 1957, 13, No 5, 268-270.

Abstract: The potential magnitudes of carbon powder electrodes saturated with gaseous ammonia are given. The dependence of the potential on the equilibrium pressure of  $\text{NH}_3$  is shown. See part II in RZhKhim, 1957, 47585.

Card : 1/1

-9-

LEWICKI, Zbigniew St.; ZAWADZKI, Zbigniew A.

Dramatic and unexpected cause of anuria. Polski tygod. lek. 9 no.  
23:716-718 7 June 54.

1. Z Lecznicy Ministerstwa Zdrowia, dyr. dr J. Winor.  
(ANURIA, etiology and pathogenesis,  
aortic rupt. compressing kidney, autopsy)  
(AORTA, tupture,  
causing kidney compression & anuria, autopsy)

PLOCKER, Leon; BIBLECKA, Zofia; BILBAUM, Maks Michal; LEWICKY, Zdzislaw

Case of military tuberculosis of the liver diagnosed by biopsy.  
Polski tygod. lek. 9 no.27:847-849 5 July 54.

1. Z Kliniki Gastrologicznej Akademii Medycznej w Warszawie;  
kierownik: prof. dr L.Plocker i z Zakladu Anatomii Patologicznej  
Akademii Medycznej w Warszawie; kierownik: prof. dr L.Paszkwicz.  
(TUBERCULOSIS, MILIARY,  
liver, diag., biopsy)  
(TUBERCULOSIS, HEPATIC,  
miliary, diag., biopsy)

BLAIN, Alicja; LEWICKI, Zdzislaw

Tetany syndrome and general underdevelopment in the infant with congenital absence of the parathyroid. *Pediat. polska* 31 no.9: 823-832 Sept 55.

1. Z II Kliniki Chorob Dzieci A M w Warszawie. Kierownik: prof. dr. med. M. Michalowicz. Z-ca kierownika: prof. dr. med. T. Lewenfisz-Wojnarowska 1 z Zakladu Anatomii Patologicznej A M w Warszawie. Kierownik: prof. dr. med. L. Paszkiewicz. Warszawa, Litewska 16.

- (PARATHYROID GLANDS, abnormalities  
absence, causing tetany and growth disord. in inf.)
- (GROWTH, in infant and child  
disord. caused by congen. absence of parathyroid glands)
- (TETANY, in infant and child  
caused by congen. absence of parathyroid glands)



LEWICKI, Zdzislaw; MASLINSKI, Czeclaw.

Effect of unilateral section of the vagus nerve on experimental tuberculosis. Polski tygod. lek. 12 no.33:1261-1263 12 Aug 57.

1. Z Zakladu Patomorfologii Polskiej Akademii Nauk; Kierownik: dr, nauk med. Ludwik Passkiewicz. Adres: Warszawa, ul. Chalubinskiego 5, Zakl. Patomorfologii PAN.

(TUBERCULOSIS, PULMONARY, experimental,  
eff. of vagotomy, unilateral (Pol))  
(VAGOTOMY, effects;  
on exper. pulm. tuberc., unilateral section (Pol))

**DZIENISZEWSKA-KLEPACKA, Lidia; LEWICKI, Zdzislaw**

A case of fatal generalized BCG infection in a 5 1/2-month-old infant with dyshormonosis. Gruzlica 26 no.1:43-49 Jan 58.

1. Z Kliniki Niemowlecej Instytutu Matki i Dziecka w Warszawie.  
Kierownik: doc. dr I. Bielicka. Dyrektor: prof. dr med. F. Groer  
i Zakładu Anatomii Patologicznej A. M. w Warszawie. Kierownik: prof. dr  
med. L. Paszkiewicz. Adres: Warszawa, ul. Kasprzaka 17.

(BCG VACCINATION, compl.

generalized infect. in inf., with endocrine dis. (Pol))

(TUBERCULOSIS, in inf. & child

generalized infect. after BCG vacc. in inf., with endocrine  
dis. (Pol))

(ENDOCRINE DISEASES, in inf. & child

with generalized tuberc. infect. after BCG vacc. in inf. (Pol))

LEWICKI, Zdzislaw

Certain aspects of the pathogenesis of experimental tuberculosis.  
I. Investigations on the occurrence and sequelae of bacillary  
bacteriemia. Review of the literature. Gruzlica 28 no.7:535-555  
Jl '60.

1. Z Zakladu Anatomii Patologicznej Akademii Medycznej i Zakladu  
Patologii Doswiadczalnej PAN w Warszawie Kierownik Zakladow:  
prof. dr nauk med. L.Paszkiwicz  
(TUBERCULOSIS exper.)  
(SEPTICEMIA exper.)

LEWICKI, Zdzislaw

Certain problems of the pathogenesis of experimental tuberculosis.  
II. Development and biological significance of the primary complex.  
Gruzlica 28 no.8:597-611 Ag '60.

1. Z Zakladu Anatomii Patologicznej Akademii Medycznej i Zakladu  
Patologii Doswiadczalnej PAN Kierownik Zakladow: prof. dr med.  
L. Paszkiewicz.  
(TUBERCULOSIS exper.)

LEWICKI, Zdzislaw

Arteriosclerosis and myocardial infarction according to autopsy material of the Institute of Pathological Anatomy of the Academy of Medicine in Warsaw in 1946-1959. Postepy hig. med. dosw. 15 no.6:703-718 '61.

1. Z Zakladu Anatomii Patologicznej AM w Warszawie Kierownik:  
prof. dr. J. Dabrowska.  
(CORONARY DISEASE statist) (MYOCARDIAL INFARCT statist)

KRZESKI, Tadeusz; LEWICKI, Zdzislaw; MITTELSTAEDT, Maurycy; NASIOROWSKA, Wanda

Spontaneous filtration of urine into the perirenal tissue in a case  
of ureteral stenosis. Polski tygod. lek. 16 no.27:1042-1046 3 JI '61.

1. Z Leczniczy Ministerstwa Zdrowia; dyrektor: dr Wl. Kulesza.

(URETERS dis)

MIERNOWSKI, Stanislaw; LEWICKI, Zdzislaw; GOLISZEK, Zbigniew

Difficulties in the evaluation of angiographic studies in a case of tendinous fibrosarcoma. Polski przegl. radiol. 25 no.6:539-548 '61.

1. Z Zakladu Radiologii Lekarskiej Kierownik: prof. dr nauk. med.  
W. Zawadowski z Zakladu Anatomii Patologicznej p.o. Kierownik: doc. dr  
med. R. Walentyncwicz-Stanczyk z I Kliniki Chirurgicznej Kierownik:  
doc. dr med. J. Nielubowicz.

(FIBROSARCOMA radiog) (ANGIOGRAPHY) (TENDONS neopl)

LEWICKI, Zdzislaw; REJOWA, Alicja

A case of neurinoma of the stomach. Polskie arch. med. wewn. 31 no.5:  
731-735 '61.

1. Z Zakladu Anatomii Patologicznej AM w Warszawie Kierownik: prof.  
dr med. J. Dabrowska oraz z II Kliniki Chorob Wewnetrznych AM w Warszawie  
Kierownik: prof. dr med. D. Aleksandrow.

(STOMACH NEOPLASMS case reports)  
(NEURILEMOMA case reports)



BANKOWSKI, Zbigniew; BICZOWA, Barbara; GORSKI, Michal; KRUS, Stefan;  
LEWICKI, Zdzislaw; RUSZCZEWSKI, Zygmunt; STARZYNSKI, Stefan

Behavior of glycogen, fats and nucleic acids in the rat liver in acute radiation sickness. Pat. pol. 13 no.3:325-336 '62.

1. Z Pracowni Patomorfologii Zakladu Patologii Doswiadczalnej PAN w Warszawie. Kierownik: prof. dr med. L. Paszkiewicz. Kierownik pracowni: doc. dr med. Z. Ruszczewski.

(RADIATION INJURY EXPERIMENTAL)  
(LIVER) (NUCLEIC ACIDS)

(LIVER GLYCOGEN)  
(LIPID METABOLISM)

LEWICKI, Zdzislaw; TUBYLEWICZ, Halina

Detection of *Listeria monocytogenes* with the aid of labeled antibodies.  
Polski tygod. lek. 17 no.22:866-869 28 IV 1962.

1. Z Zakladu Anatomii Patologicznej AM w Warszawie; p.o. kierownika  
Zakladu; doc. dr med. R. Walentynowicz-Szanczyk i z Zakladu Mikrobiologii  
Lekarskiej AM w Warszawie; kierownik: prof. dr med. E.Mikulaszek.  
(*LISTERIA MONOCYTOGENES*) (ANTIBODIES)

WISLAWSKI, Jerzy; MAZUROWSKI, Witold; LEWICKI, Zdzislaw

Metastatic tumors of the brain. Nowotwory 14 no.3:253-257  
Ag-S '64.

1. Z Kliniki Neurochirurgii Akademii Medycznej w Warszawie  
(Kierownik: prof. dr. med. L. Stepien) i z Zakladu Anatomii  
Patologicznej Akademii Medycznej w Warszawie (Kierownik:  
doc. dr. med. R. Stanczykowa).

LEWIECKA, Irena

Some problems concerning microwave noise diodes.  
Przeł elektroniki 3 no.11:662-664 N '62.

1. Przemyslowy Instytut Elektroniki, Warszawa.

LEWIN, S.; ZALMAN, M.; REICHRATH, S.

Modifications of biochemical, antigenic, and pathogenic properties of the celi baccillus by vegetative hybridization with the typhoid baccillus. p. 1795. Academia Republicii Populare Romine. COMUNICARILE. Bucuresti. Vol. 5, no. 12, Dec. 1955.

So. East European Accessions List Vol. 5, No. 9 September, 1956

LEWINSKA, A.

Observations on the coloration of designs. Biuletyn Wzor.

p. 13 (Przemysl Wloclienniczny. Vol. 10, no. 7, July 1956. Lodz, Poland)

Monthly Index of EastEuropean Accessions (EEAI) LC. Vol. 7, no. 2,  
February 1958

LEWINSKA, A.

The problem of the value of the fabrics in ready-made clothes; remarks of a designer of fabrics. Biuletyn Wzor. p. 1.

PRZEGLAD WLOKIENNICZY. (Stowarzyszenie Inzynierow i Technikow Przemyslu Wlokienniczego) Lodz, Poland. Vol. 12, no. 1, Jan. 1958.

Monthly List of East European Accessions (EEAI) LC. Vol. 8, no. 7, July 1959.

Uncl.

LEWINSKA, A.; SZARRAS, D.

Utility functions of fabrics in the apartment interior. Przegl  
wlokie 16 no.5:Suppl.:Biul inst wzorn przem 12 no.2:2-3 My '62.



*L. Lewińska and Janina*

2

551.578.41:551.579.4  
 7.4-239  
 ✓ Lewińska, Janina, Badania zawartości wody w śniegu na tle wahań wiosennych. [The study of water content of snow and spring floods.] Przebieg A. meteorologiczny i Hydrologiczny, Warsaw, 6(3/4):83-94, 1953. fig., table, 20 refs. English summary p. 94. DWB—The thickness of snow cover, its content in accumulated water, the changes of weather conditions (mainly air temperature changes) and retention properties of the ground are the main factors determining spring floods. An analysis of results of such observations carried out by the author in order to study the mechanism of spring floods in the region of the Carpathian Mountains during 5 winter periods (1948/49-1952/53) are presented in graphs (variation of water content in snow cover and its relationship with air temperature) and tables and discussed. It was shown that of the 5 investigated periods, two (1948/49, 1951/52) were abundant in snow; two (1950/51, 1952/53) were normal and the remaining were poor in snow. The highest snow retention, 547 million m<sup>3</sup>, occurred in 1951/52 (90% of the annual runoff) while the mean for the 5 yrs was 230 mil. m<sup>3</sup> or 42% for the mean yearly runoff. In spite of the brevity of the observations, a certain rhythm of sequence of winters rich and poor in snow may be observed. A tendency to floods in the following spring and summer is noticeable after a winter with abundant snowfalls when great quantities of water are stored in snow cover. This may be considered as an indication of coming floods. Subject Headings: 1. Water content of snow 2. Spring floods 3. Snow melt runoff 4. Poland.—A.M.P.

67

180 JSD

**"APPROVED FOR RELEASE: Monday, July 31, 2000**

**CIA-RDP86-00513R000929710**

**APPROVED FOR RELEASE: Monday, July 31, 2000**

**CIA-RDP86-00513R000929710C**

LEWINSKA, J.

The distribution and frequency of the lower air currents in the Polish Tatra Mountains, p. 239.

Panstwowy Instytut Hydrologiczno-Meteorologiczny. WIADOMOSCI SLUZYNY HYDROLOG-  
ICZNEJ I METEOROLOGICZNEJ.  
Warszawa, Poland. Vol. 6, no. 5, 1959

Monthly List of East European Accessions (EEAI) LC, Vol. 8, no. 7, July 1959

Uncl.

LEWINSKA, Janina

Determination of the water content in snow. Przegl geofiz 7  
no.4:245-254 '62.

1. Panstwowy Instytut Hydrologiczno-Meteorologiczny, Krakow.

BALINSKA, H.; LEWINSKA, K.; ROMANIUK, A.; WYRWICKA, W.

The effect of lesions of the medial hypothalamus on internal inhibition in the alimentary conditioned reflexes type II. Acta biol exper 21:188-197 '61.

1. Physiological Laboratory, University, Lodz and Department of Neurophysiology, Nencki Institute of Experimental Biology, Warsaw.

(HYPOTHALAMUS)

LEWINSKA, Krystyna

Rhythmic changes in food intake and blood sugar level in  
the rabbit as a function of food deprivation intervals. Acta  
biol. exp. 23 no.3:193-206 '63.

1. Laboratory of Physiology, University of Lodz, Lodz, Poland.  
(HUNGER) (BLOOD SUGAR) (PERIODICITY)  
(PHYSIOLOGY)

LEWINSKA, M.

Effect of hunger on food conditioned reflexes of the 2d type in rabbits before and after damaging the pericentral hypothalamic region. Acta physiol.polon. 11 no.5/6:803-805 '60.

1. Z Zakladu Fizjologii Zwierzat U.L. w Lodzi, Kierownik: doc. dr W.Wyrwicka.

(REFLEX CONDITIONED)  
(HYPOTHALAMUS physiol)  
(HUNGER)

LEWINSKA, M. Krystyna

Effect of injuries of the central hypothalamus on conditioned food reflexes of the 2d type in various degrees of starvation in the rabbit. Acta physiol Pol 12 no.5:635-647 '61.

1. Z Zakladu Fizjologii Zwierzat Uniwersytetu w Lodzi Kierownik: doc. dr W. Wyrwicka.

(REFLEX CONDITIONED) (HYPOTHALAMUS physiol)  
(STARVATION exper)



LEWINSKA, Maria Krystyna

The effect of food deprivation on blood sugar level, food intake  
and conditioning in rabbits with medial hypothalamic lesions.  
Acta biol. exp. (Warsz.) 24 no.4:219-246 '64.

1. Laboratory of Animal Physiology, University of Lodz, Lodz, Poland.

WOJCIECHOWSKI, E. LEWINSKA, Zofia

Sporadic typhoid fever. V. Behavior of serological reactions.  
Przegl.epidem.Warsz. 9 no.1:21-29 1955.

1. Z Panstwowego Zakladu Higieny w Warszawie.  
(TYPHOID FEVER, diagnosis  
serodiag. in sporadic cases)  
(SERODIAGNOSIS, in various diseases  
typhoid fever, sporadic)

LEWINSKA, ZOFIA

KASSUR, Bertold; MIGDAJSKA-KASSUROWA, Bronislawa; LEWINSKA, Zofia

Dynamics of sporadic serological reactions in sporadic typhus.  
Przegl. epidem., Warsz. 11 no.1:1-9 1957.

1. Z II Kliniki Chorob Zakaznych A. M. i Dzialu Klinicznego  
P. Z. H. w Warszawie Kierownik: prof. dr med B. Kassur. Z Oddzialu  
Obserwacyjnego Szpitala Zakaznego Nr 1 w Warszawie Ordynator:  
dr. med. Br. Migdalska-Kassurowa i z Zakladu Bakteriologii P. Z. H.  
w Warszawie Kierownik: doc. dr med. E. Wojciechowski.

(TYPHUS, immunology,  
serol. reactions, dynamics (Pol))

LEWINSKA, Zofia

Opsono-phagocytic reaction with Rickettsia prowazeki. Przegł. epidem.,  
Warsz. 11 no.1:31-38 1957.

1. Z Zakładu Bakteriologii Państw. Zakładn Higieny w Warszawie.

(RICKETTSIA PROWAZEKI, immunology,  
opsono-phagocytic reactions (Pol))

(PHAGOCYTOSIS,  
opsono-phagocytic reactions with Rickettsia prowazeki  
(Pol))

LEWINSKA, ZOFIA

WOJCIECHOWSKI, Edmund; LEWINSKA, Zofia; MIKOLAJCZYK, Edward; pomoc techn.  
PRZYBYLA, Apollonia

Survival of *Rickettsia prowazeki* in organs of experimentally  
infected rodents. Przegł. epidem., Warsz. 11 no.1:39-46 1957.

1. Z Zakładu Bakteriologii Państwowego Zakładu Higieny w Warszawie.  
(TYPHUS, experimental,  
survival of *Rickettsia* in organs of infected rodents (Pol))

LEWINSKA, ZOFIA

WOJCIECHOWSKI, Edmund; MIKOLAJCZYK, Edward; LEWINSKA, Zofia; pomoc techn.  
PRZYBYLIA, Apollonia

Antigenic activity of four strains of R. burneti. Przegl. epidem.,  
Warsz. 11 no.1:47-58 1957.

1. Z Zakladu Bakteriologii Panstwowego Zakladu Higieny w Warszawie.  
(COXIELLA BURNETII, immunology,  
antigenic activity of 4 strains (Pol))

WOJCIECHOWSKI, Edmund; LEWINSKA, Zofia; MIKOLAJCZYK, Edward

Q fever serological survey of certain groups of the population  
in Poland. Przegł. epidem., Warsz. 11 no.1:59-63 1957.

1. Z Zakładu Bakteriologii Państwowego Zakładu Higieny w Warszawie.  
(Q FEVER, immunology,  
serol. reactions in Poland (Pol))

LEWINSKA, ZOFIA

WOJCIENCHOWSKI, Edmond; WNEK, Sylwester; ~~LEWINSKA, Zofia~~; FRYGIN, Czesława

Q fever serological examination of in meat and breeding animals.  
Przegl. epidem., Warsz. 11 no.1:65-68 1957.

1. Z Zakładu Bakteriologii Państw. Zakładu Higieny i Obwođu Urzędu  
Badania Zwierząt Rzeźnych i Mięsa P. R. N. Warszawa.

(Q FEVER, immunology,  
serol. reaction in domestic animals in Poland (Pol))



LEWINSKA, ZOFIA

OLEBS, Andrzej; KURZEJA, Kazimierz; LEWINSKA, Zofia

Serological survey of domestic animals in the first focus of epidemic of Q fever in Poland. Przegł. epidem., Warsz. 11 no.1: 85-89 1957.

1. Z Wojewodskiej Stacji Sanitarno-Epidemiologicznej w Rzeszowie i pracowni riketsyjowej Państwowego Zakładu Higieny w Warszawie.  
(Q FEVER, immunology,  
serol. reactions in domestic animals in Poland (Pol))

WOJCIECHOWSKI, Edmund; LEWINSKA, Zofia

Complement fixation reactions with epidemic and endemic typhus antigens in the course of sporadic exanthematous typhus. Med. dosw. mikrob. 11 no.2:125-134 1959.

1. Z Zakladu Bakteriologii Panstw. Zakladu Higieny w Warszawie.  
(TYPHUS, immunol.) (COMPLEMENT)

LEWINSKI, A.

"Delay in brick production during a long rainy period." (To be contd.) p. 59.  
"Houses of limestone blocks. Tr. from the Russian." p. 59. "Methods of shortening the production cycle and improving sand and lime products. Tr. from the Russian." p. 60. "Appeal of the Central Management of Building Ceramics to workers, group leaders, and foremen of the North Kiln." p. 61. (MATERIALY BUDOWLANE, Vol. 8, no. 2, Feb. 1953, Warszawa, Poland)

SO: Monthly List of East European Accessions, L. C., Vol. 3, No. 5, May 1954, Uncl.

LEWINSKI, A.

(MATERIALY BUDOWLANE, Vol. 8, No. 8, Aug. 1953, Warszawa, Poland)

"Proper organization in the production of ceramics." p. 213

SO: MONTHLY LIST OF EAST EUROPEAN ACCESSIONS, L.C., Vol.3, No. 4, APRIL 1954

LEWINSKI, APOLONIUSZ.

Wydobywanie gliny. (Wyd. 1.) Warszawa, Budownictwo i Architektura  
(1955) 40 p. (Digging clay. 1st edl. illus., diags.)

SOURCE: East European Accessions List (EEAL), LC, Vol. 5, no. 3,  
March 1956

LEWINSKI, A.

Possibilities of an efficient shortening of the cycle of drying  
raw material for building ceramics products. p. 311. Vol. 10, no. 11,  
Nov. 1955, MATERIALY BUDOWLANE. Warszawa.

SOURCE: East European Accessions List (EEAL), IC, Vol. 5, no. 3, March 1956.

LEWINSKA, A.

Industrial design in Finland. Szklo 12 no.11:351-352 N '61.

TAUBENFLIEGEL, W.; WAJDA, Z.; LEWINSKI, A.

Determination of the condition of vascularization of pedicle skin grafts (Gillies-Filatov) by the thermoelement. Acta chir. plast. (Praha) 7 no.3:236-240 '65.

1. The 3rd Surgical Clinic, Medical Academy, Gdansk (Poland)  
(Director: Prof. Zdzislaw Kieturakis M.D.).

KOZŁOWSKI, W.; RACZYŃSKI, S.; TAUBENFLIGEL, W.; KOSSAK, J.; LEWINSKI, A.;  
BANASIK, Z.

Experimental studies on the insertion of an electronic pacemaker  
of the heart of our construction in the dog. Preliminary commu-  
nication. Kardiol. Pol. 8 no.2:125-128 '65.

1. Z III Kliniki Chorob Wewnętrznych (Kierownik: prof. dr.  
M. Gamski) i z III Kliniki Chirurgicznej AM w Gdansk (Kierownik:  
prof. dr. Z. Kieturakis).



HAXHOLD, B. Fl.; LEWINSKI, Aleksander

Anesthesia in laryngological interventions in the Glostrup hospital. Polski tygod. lek. 16 no.42:1607-1608 16 0 '61.

1. Z Oddzialu Anestezjologicznego Szpitala Miejskiego w Glostrup w Kopenhadze; kierownik; dr med B.Fl. Haxholdt i z III Kliniki Chirurgicznej A.M.G.; kierownik: prof. dr. Zdislaw Kieturakis.

(TONSILLECTOMY anesthe & analg)

(ADENOIDECTOMY anesth & analg)

(NITROUS OXIDE anesth & analg)

LEWINSKI, Jan, inz.

Efforts to arrange line testing in electric traction of the  
Baltic Sea Coastline. Pruegl kolej elektrotech 10 [i.e. 15]  
no.12:351-355 D'63.

1. Gdansk District Administration of State Railroads.

POLAND/Chemical Technology. Chemical Products and Their  
Application. Part 4. - Dyeing and Chemical Treat-  
ment of Textile Materials.

H

Abs Jour: Referat. Zhurnal Khimiya, No 21, 1958, 72694.

Author : Jerzy Lewinski.  
Inst :  
Title : Devices for Size Preparation.

Orig Pub: Wlokiennictwo, 1957, 6, No 12, 272-276.

Abstract: Description of vats with stirrers, of autoclaves of  
the "sucker" and "Rutti" companies and of Polish  
autoclave EVZ, of aggregates of the same companies  
and of the British company "Hibbert". Description  
of the technological process of preparation and of  
the quality of starch size.

Card : 1/1

150

LEWINSKI K.

Części składowe i naprawa odbiorników radiowych (Component parts and repair of radio receivers) by K. Lewinski. Reported in New Books (Nowe Książki.) March 1, 1956.