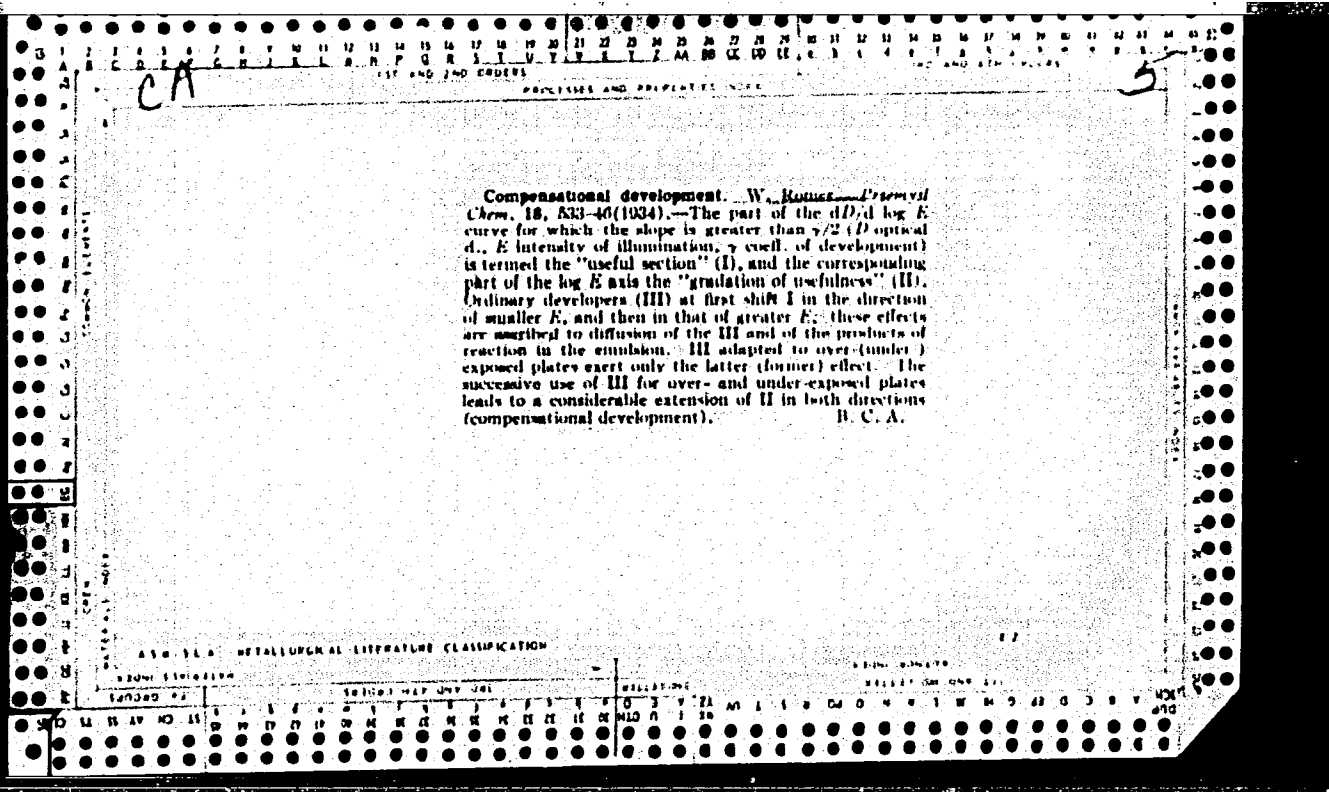
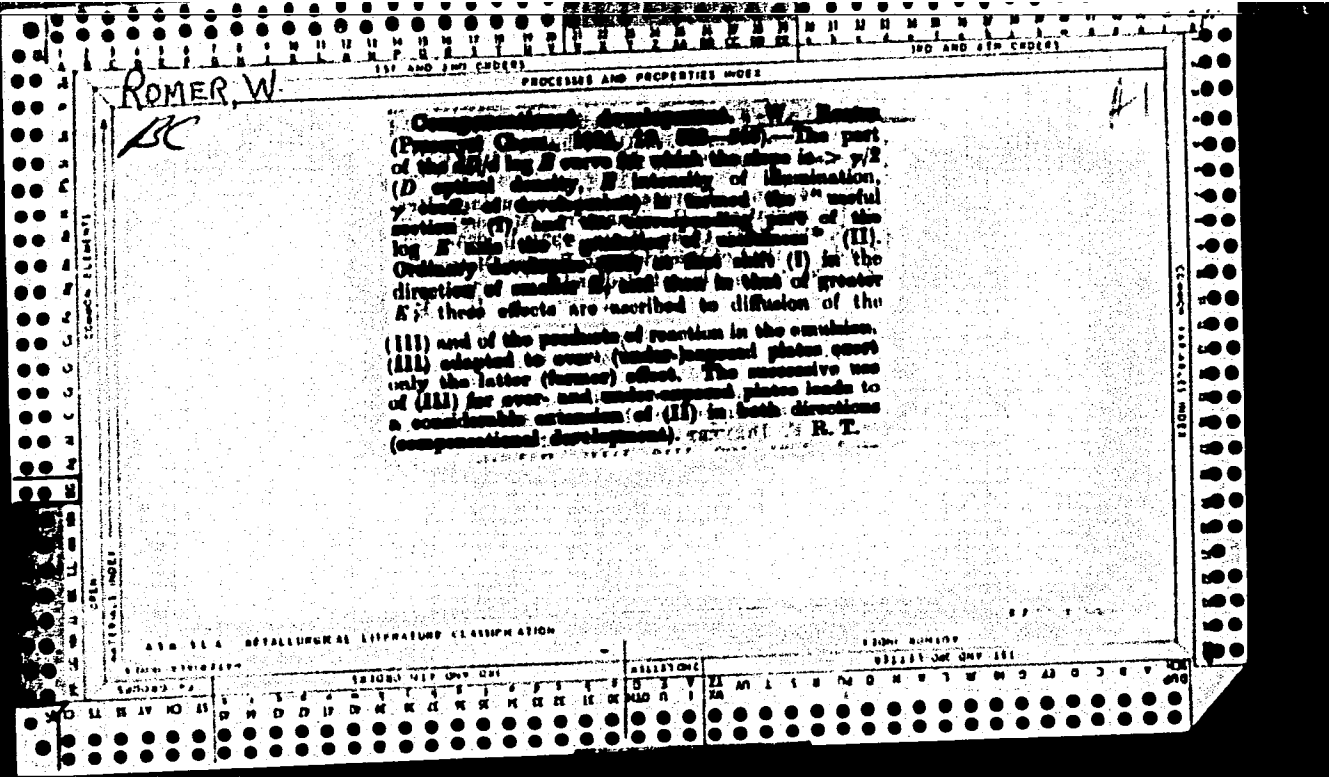


ROMER, Witold

An application of the comparison standard for the estimation of graininess of photographic layers. *Chemia stosow* 5 no.2:187-194 '61.

1. Katedra Fototechniki, Politechnika Wroclawska i Pracownia Fizykochemii Procesu Fotograficznego, Polska Akademia Nauk.

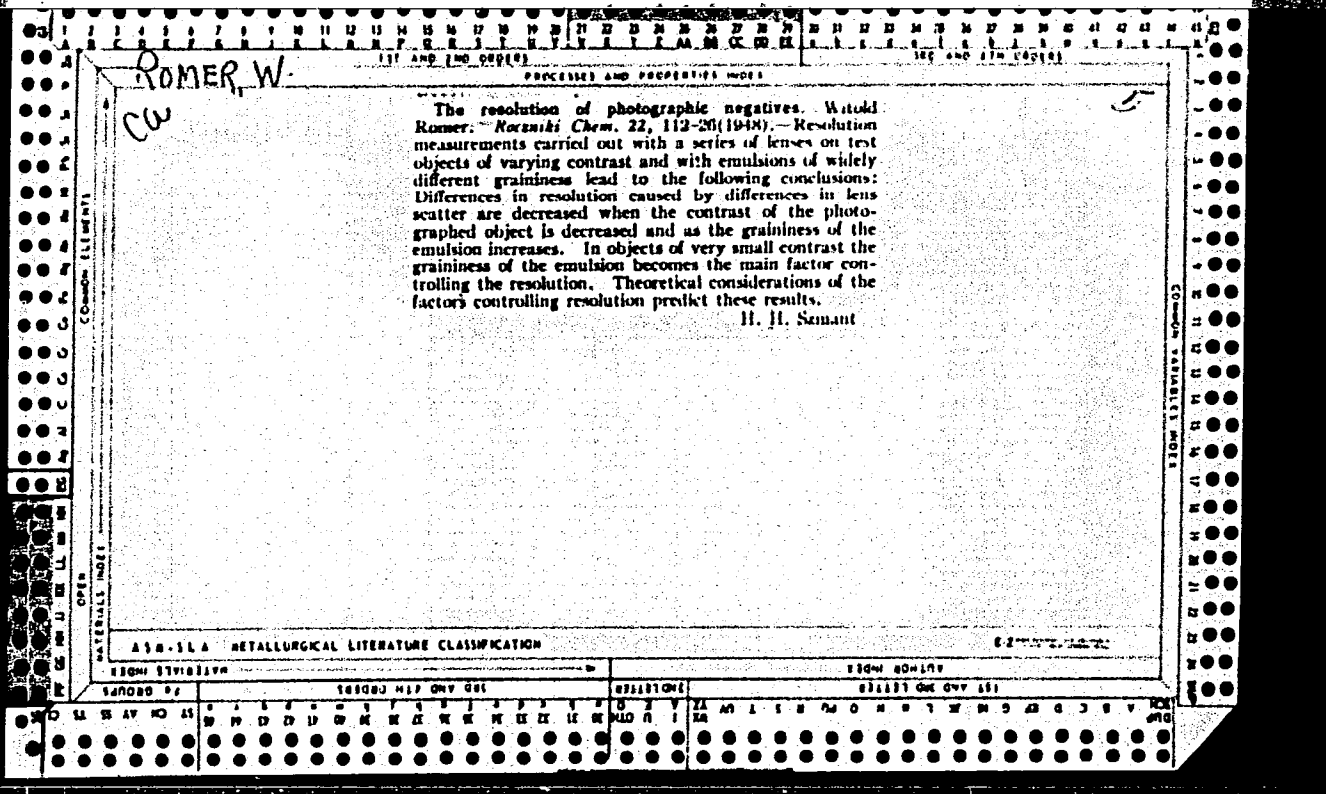




ROMER, Witold; GREDKA, Maria; JACKIEWICZ, Zofia; PASEK, Halina;  
PLEBANCZYK, Wiesława

Photographic chemistry. *Chemia stosow* 3 no.2:201-223 '59.

1. Katedra Fototechniki, Politechnika, Warszawa.



ROMER, Witold

The graininess of photographic images. *Chemia stosow* 4 no.2:183-230  
'60. (EEAI 10:3)

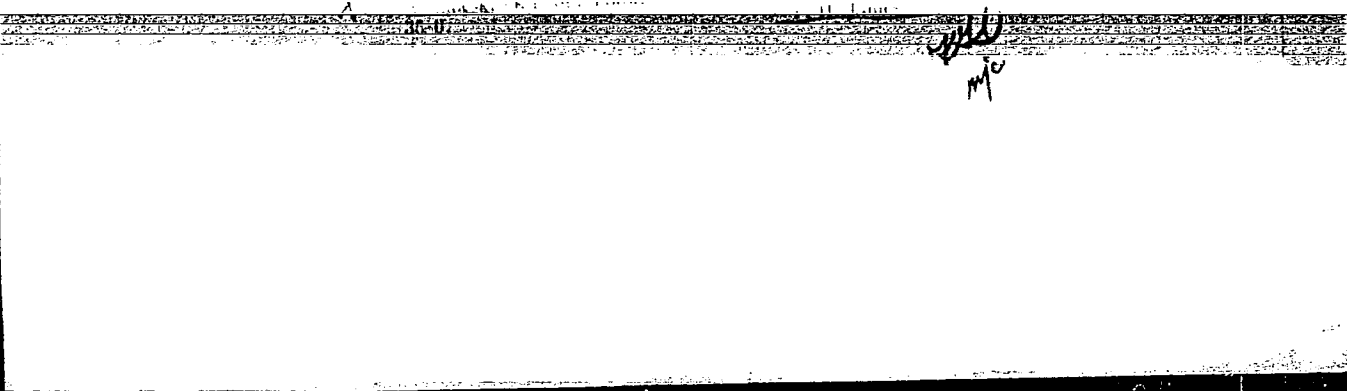
1. Katedra Fototechniki Politechniki Wroclawskiej.  
(Photography)

*As per, 10.*

~~... of a ...~~  
photographic enlargements ... A new visual  
... of ...

"APPROVED FOR RELEASE: 07/19/2001

CIA-RDP86-00513R001445320007-5



APPROVED FOR RELEASE: 07/19/2001

CIA-RDP86-00513R001445320007-5"



ROMER, Witold; WOJTCZAK, Jan

Phototropism of copper systems and Jan Wojtczak's remarks on this article. Roczniki chemii 33 no.4/5:1261-1262 '59. (EEAI 9:9)

1. Katedra Fototechniki Politechniki, Wroclaw (for Romer). 2. Katedra Chemii Fizycznej Uniwersytetu im. A.Mickiewicza, Poznan (for Wojtczak)  
(Phototropy) (Copper)

ROMER, WITOLD

~~Problems of optical sensitization of photographic emulsions. Witold Romer (Higher Polytech. School, Wroclaw, Poland). *Przegląd Chem.* 8, 97-128 (1964). The following topics are reviewed: chem. and optical sensitization, optical sensitizers, complex formation and dye adsorption on crystals of Ag halides, aggregation and second type sensitization, efficiency of sensitization, supersensitization, and antisensitization. Mechanism of energy transfer, and the quantum deficit are also mentioned. 17 references.~~

Adam Spiczynski

ROMERSHTEYN, T.I., inzh.

Automatizing tube trimming and threading machines. Metallurg 3  
no.12:35-37 D '58. (MIRA 11:12)  
(Metal-cutting tools) (Automatic control) (Tubes)

SOV/130-58-12-16/21

AUTHOR: Romershteyn, T.I., (Engineer)

TITLE: Automation of Tube-Cutting and Tube-Threading Mills  
(Avtomatizatsiya trubobreznykh i trubonareznykh stankov)

PERIODICAL: Metallurg, 1958, Nr 12, pp 35 - 37 (USSR)

ABSTRACT: The author describes the recently introduced automation of some groups of type 9A151 tube cutting and of tube threading machines at the im. Lenina (im. Lenin) works in Dnepropetrovsk. Fig 1 shows the position of contact detection for a pair of machines to provide automatic operation from the dumping of a batch of tubes (including removal of burrs) enabling one instead of two men to work two machines. The system adopted (Fig 2) for the automation of "Stamets" type thread-cutting machines has also enabled one man to work two machines. There are 2 figures.

Card 1/1

ROMERSHTEYN, T. I.

AUTHOR: Romershteyn, T. I., Engineer. 130-3-15/21  
TITLE: Change in the method of blowing skelp in the furnace  
welding of tubes. (Izmeneniye sposoba obduvki shtripsov  
pri pechnoy svarke trub).  
PERIODICAL: Metallurg, 1958, No.3, pp.31-32 (USSR).

ABSTRACT: The author outlines the action of the air blast on the  
edges of the skelp in the furnace welding of tubes and  
considers the disadvantages of the present method where  
the compressed air is supplied through slots in two  
wind-boxes placed on either side of the moving skelp.  
These disadvantages include frequent misplacement of  
the blast, clogging of the slots by scale particles  
from the skelp and difficulties in changing tube  
profiles. He describes a new system (Fig.16), claimed  
to avoid these disadvantages, in which vertical blowing  
from a single box situated above the skelp is used,  
and outlines corresponding equipment layout changes.  
He states that adoption of the new system has enabled  
the metal-consumption coefficient to be reduced to 1.5-  
2.0 kg/ton of finished tubes.  
Card 1/1 There is 1 figure.

AVAILABLE: Library of Congress.

ROMERSHTEYN, T. I., inzh.

Changing the method of compressed air blasting of strips during  
furnace pipe welding. Metallurg 3 no.3:31-32 Mr '58. (MIRA 11:3)  
(Pipe, Steel--Welding)

ROMERSHTEYN, T.I., inzhener.

Pipe welding funnel with inserted rings. Metallurg 2 no.7:28-29  
Jl '57. (MERA 10:8)

1. Truboprokatnyy zavod imeni Lenina.  
(Pipe, Steel--Welding)  
(Electric welding--Equipment and supplies)

ROMERSHTEYN, T.I.

130-7-15/24

AUTHOR: Romershteyn, T.I. (Engineer)

TITLE: Tube-Welding Funnel with Ring Inserts (Trubosvarochnaya voronka so vstavnyimi kol'tsami)

PERIODICAL: Metallurg, 1957, Nr 7, pp.28-29 (USSR)

ABSTRACT: In 1952 and 1954 inter-works study groups were organised on the production and finishing of tubes butt-welded in stationary mills. In this article some of the results are briefly considered: at the author's works, for example, the adoption of techniques used at the Vyksunsk and imeni Andreyeva works led to considerable savings in fuel and electricity and greater increases in productivity than originally planned. The funnel in which the tubes are welded is of particular importance and experience on these was exchanged with mutual benefit; since September, 1956 a new construction has been introduced with rings of type P 18 high-speed cutting steel inserted in the funnel. The funnel itself is made of non-inoculated cast iron and the new assembly has a durability ten times that of the inoculated-iron funnels previously used

Card 1/2



130-7-15/24

.Tube-Welding Funnel with Ring Inserts.

and enables tube production to be increased by 7 - 8%. There is 1 figure.

ASSOCIATION: The imeni Lenina tube-rolling works. (Truboprokatnyy zavod im. Lenina)

AVAILABLE: Library of Congress.

Card 2/2

197 AND 198 CODES      199 AND 200 CODES

PROCESSES AND PROPERTIES INDEX

ca

17

A vacuum chlorinator. B. M. Romesnikil. *Vostochnazhenskoe Sanit. Tekh.* 1930, No. 1, 48-51. *KAFW: Referat Zhur.* 2, No. 5, 95(1930). - A chlorinator (either stationary or portable) is described for disinfection of drinking water without the use of special indicator solutions. A cylinder can be used for the supply of Cl<sub>2</sub>. W. R. Henn

ASD 514 METALLURGICAL LITERATURE CLASSIFICATION

FROM 197-200

FROM 201-300

FROM 301-400

FROM 401-500

FROM 501-600

FROM 601-700

FROM 701-800

FROM 801-900

FROM 901-1000

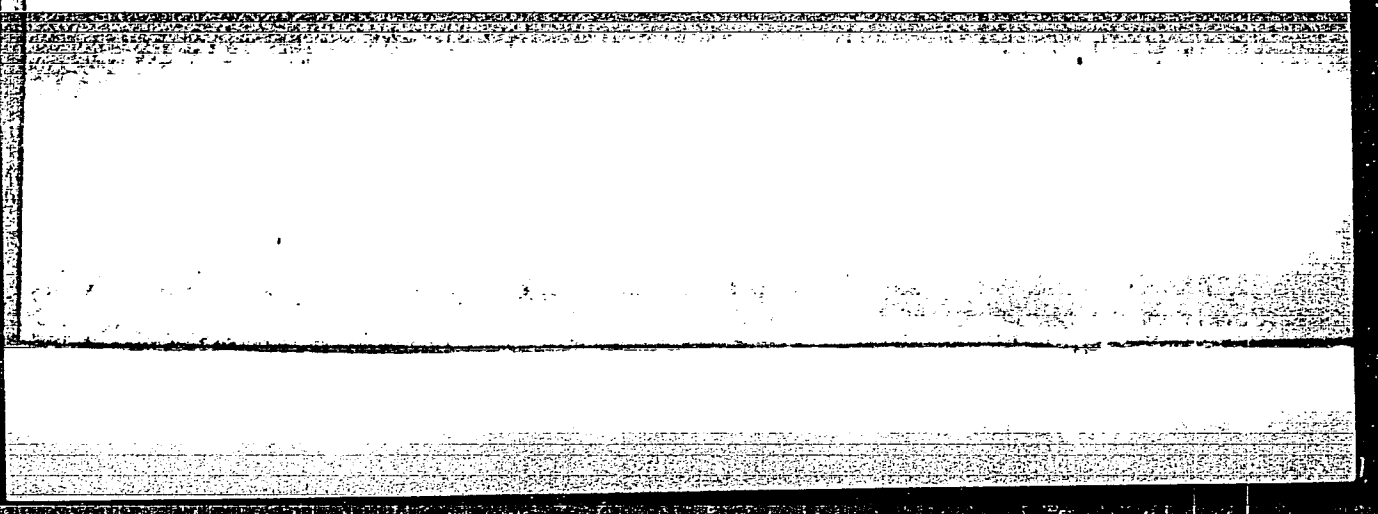
ROMEYKO, I. M.

1  
/ A microbiologic study of the rhizosphere of hops. II. The effect of some rhizosphere bacteria on the growth and yield of hops. I. M. Romelko. *Mikrobiol. Zhur., Akad. Nauk Ukr.S.S.R., Inst. Mikrobiol. im. D. K. Zabolotnogo* 18, No. 2, 9-12 (Russian summary, 13) (1966).—Tests were made of the effect of introduction of the following bacteria into the rhizosphere of hops: *Bacillus mycoidei*; and *Azotobacter chroococcum*, alone and in combination; *Chromobacterium aurantiacum*, *B. mycoidei*, *B. megatherium*, *Pseudomonas liquefaciens*, *Bacterium cellulosum*, *A. chroococcum*, alone and in combination. The presence in the rhizosphere of ammonifying bacteria and of *Azotobacter* increased the ammonification of the soil and its P-acids and nitrates content, resulted in the proliferation of the microflora of the rhizosphere, and increased the yield of the dry cones of the hops.

R S Levins

**"APPROVED FOR RELEASE: 07/19/2001**

**CIA-RDP86-00513R001445320007-5**



**APPROVED FOR RELEASE: 07/19/2001**

**CIA-RDP86-00513R001445320007-5"**

D 4917-00 EWT(1) OW

ACC NR: AP5023339

UR/0154/65/000/003/0055/0061  
538.52

AUTHOR: Batrakov, Yu. G., (Docent, Candidate of technical sciences); Lyubarets, V. P.,  
(Student); Kovalenko, A. N., (Student); Romeyko, D. F., (Engineer) 56  
48  
3

TITLE: Field investigation and trial use of the Koni 007 and Ni-VZ leveling instruments 10

SOURCE: IVUZ: Geodeziya i aerofotos"yemka, no. 3, 1965, 55-61

TOPIC TAGS: geodetic survey, geodetic instrument, model test, performance test

ABSTRACT: The Koni 007 leveling instrument, made by VEB Karl Zeiss in Jena, and the Ni-VZ, made by the Hungarian optical factory MOM, were field-tested near Moscow in 1963 and used during the 1963 Kazakh expedition of Giprovdokhoz to survey the possible route of the Irtysh-Ishim canal. An analysis of the comprehensive data presented in this article shows that the leveling accuracy for double (single) path is  $\pm 2 - 3$  mm (2.5 - 4 mm) per 1 km for the Koni 007 instrument, and  $\pm 3 - 4$  mm (4 - 6 mm) for the Ni-VZ instrument. Both instruments are resident to shocks encountered during travel on poor quality village roads. During high wind or heavy traffic nearby, the filaments of the Ni-VZ instrument acquired excessive vibrations leading to unreliable readings. No such effects appeared on the Koni 007 instrument. The use of these leveling instruments reduced by about 20 - 25% relative to the ordinary instruments the amount of time needed for the leveling operations. "Students Yu. Soldatov and K. Shetinina participated in the work with the leveling instruments." Orig. art. has: 7 formulas, 2 figures, and 2 tables.

Card 1/2

0901 1347

L 4917-66

ACC NR: AP5023339

ASSOCIATION: [Batrakov, Lyubarets, Kovalenko] Moscow Institute of Land Management  
Engineers (Moskovskiy institut inzhenerov zemleustroystva); [Romeyko] Giprovdokhoz 44,55

SUBMITTED: 29Sep64

ENC: 00

44.55  
SUB CODE: ES, IE

NO REF SOV: 004

OTHER: 002

BC  
Card 2/2

ROMBYKO, I.M.

Microbiological studies of the hop rhizosphere. Report  
No. 1. Mikrobiol. zhur. 17 no.4:5-8 '55 (MLBA 10:5)

1. Z Kiivs'kogo derzhavnogo universitetu im. T.G. Shevchenka.  
(HOPS) (RHIZOSPHERE MICROBIOLOGY)

SAMTSEVICH, S.A.; ZAREMBA, V.P.; ROMEYKO, I.N.

Effect of different cultivation practices on the microflora of  
podzolized soils. Trudy Inst. mikrobiol. no.7:115-123 '60.

(MIRA 14:4)

1. Ukrainskiy nauchno-issledovatel'skiy institut zemledel'ya.  
(SOIL MICRO-ORGANISMS) (TILLAGE)



ROMEYKO, I.N.

Influence of certain rhizospheric bacteria on hop growth and productivity. Trudy VNIIPP no.5: 122-131 '55. (MLBA 9:1)

(Rhizosphere microbiology) (Hops)

NALIVAYKO, G.S., kandidat sel'skokhozyaystvennykh nauk.; ROMBYKO, I.N.,  
kandidat biologicheskikh nauk.

Increasing the effect of fertilizers when applying certain rhizo -  
sphere bacteria. Dokl. Akad. sel'khoz. 21 no.9:43-47 '56.

(MIRA 9:10)

1. Zhitomirskaya nauchno-issledovatel'skaya stantsiya khmelovodstva.  
Predstavleno akademikom P.A. Vlasyukom.

(Fertilizers and manures) (Rhizosphere microbiology)

ROMSYKO. I.M.

Microbiological study of hop rhizosphere. Report No.2: Effect of  
some rhizosphere bacteria on the growth and productivity of hops.  
Mikrobiol.zhur. 18 no.2:9-13 '56. (MLA 10:9)

1. Z Kiiva'kogo derzhavnogo universitetu im. T.G.Shevchenka  
(HOPS) (RHIZOSPHERE MICROBIOLOGY)

"Microbiological Investigation of the Rhizosphere of Hops." Cand Biol Sci, Chair  
of Antibiotics and Microbiology, Kiev State U, Kiev, 1954. (RZhBiol, No 8, Apr '55)

SO: Sum. No. 704, 2 Nov 55 - Survey of Scientific and Technical Dissertations Defended  
at USSR Higher Educational Institutions (16).

ROMENKO, Marjan

Taktika aviatsii; perevod s pol'skogo. [Aviation tactics] Fredisl. Tadeusha Kutschety.  
Moskva, Gos. voen, izd-vo, 1938. 213 p. plans.

Added t. p. in Polish, with imprint: Warszawa, Glowna Ksieg. Wojskowa, 1936.

DLC: UG630.R567

SO: Soviet Transportation and Communications, A Bibliography, Library of Congress  
Reference Department, Washington, 1952, Unclassified

L 12720-00 EWT(d)/EWT(l)/EWT(m)/EWT(n)/EWT(w)/EWA(d)/EWA(v)/ECS(k)/EWF(k)/ETG(m)-6/

ACC NR: AT6003093 EWA(l)/ SOURCE CODE: UR/3181/63/000/015/0245/0251  
EWA(h) LJP(c) EM/JD/WW

AUTHOR: Romeyko, N. F.

ORG: None

76  
BT/

TITLE: Results of an investigation of local heat transfer and resistance coefficients in turbulent flow of a gas along the length of a round tube, under constant heat flux conditions

SOURCE: Kuybyshev. Aviatsionnyy institut. Trudy, no. 15, pt. 2, 1963.  
Doklady kustovoy nauchno-tehnicheskoy konferentsii po voprosam mekhaniki zhidkosti i gaza (Reports of the Joint scientific-technical conference on problems of the mechanics of liquid and gas). 245-251

TOPIC TAGS: convective heat transfer, hydraulic resistance, turbulent flow, heat transfer coefficient

ABSTRACT: In previous work by the author, an attempt was made to set up a basic calculating equation for the determination of heat transfer coefficients. In the region governed by the Blasius Law, the equation had the form:

$$Nu_m = 1,056 C_r \cdot Re_m Pr_m^{0.43} \quad (1)$$

Card 1/2

L 15720-66

ACC NR: AT6003093

The physical parameters in the equation relate to the mean temperature between the temperature of the wall and the flow. The article presents a figure showing a comparison of the equations proposed by various authors for calculation of the similarity number with respect to the mean temperature. The author concludes that the use of a two-layer model of the boundary layer for solution of the heat transfer problem in the flow of a gas makes it possible to obtain semi-empirical relationships which correlate sufficiently well the data of various authors in the region of significant nonisothermicity. Orig. art. has: 12 formulas and 3 figures.

SUB CODE: 20/ SUBM DATE: 00/ ORIG REF: 007/ SOV REF: 000/ OTH REF: 002

TS  
Card 2/2

KUDRYASHEV, L. I.; ROMEYKO, N. F.

"Application of boundary-layer theory to the determination of heat transfer and resistance coefficients for a constant heat flux along the length of a round tube."

report submitted for 2nd All-Union Conf on Heat & Mass Transfer, Minsk, 4-12 May 1964.

Kuybyshev Aviation Inst.



I 11-516-66 EWT(1)/EPF(n)-2/EWG(m) WW

Acc No AT6003067

SOURCE CODE: UR/3181/63/000/015/0003/0024

AUTHOR: Kudryashev, L.I. (Professor, Doctor of technical sciences);  
Romeyko, N.F.

ORG: None

TITLE: Use of boundary layer theory to determine the resistance and  
heat transfer coefficients along a round tube with constant heat loadsSOURCE: Kuybyshev. Aviatsonnyy institut. Trudy, no. 15, pt. 2, 1963.  
Doklady kustovoy nauchno-tekhnicheskoy konferentsii po voprosam mekhan-  
iki zhidkosti i gaza (Reports of the Joint scientific-technical con-  
ference on problems of the mechanics of liquid and gas), 3-24TOPIC TAGS: boundary layer theory, convective heat transfer, hydrodyna-  
mic theory, heat transfer coefficient, heat balanceABSTRACT: The heat balance equation between two cross sections of a  
tube at a distance dz from each other will be

$$c_p \varphi dt = \pi D q_0 dz, \quad (1)$$

where  $\varphi$  is the mass gas rate, kg/hr;  $\bar{t}$  is the mean temperature of the  
gas stream over the cross section, determined by the expression:

Card 1/3

14516-66

ACC NR:

AT6003067

$$\bar{t} = \frac{\int_0^{r_0} w r dr}{\int_0^{r_0} w dr} \quad (2)$$

$q_0$  is the constant magnitude of the heat flux; kcal/m<sup>2</sup>-hr; D is the inside diameter of the tube in meters. Integrating Eq. 1, we get:

$$\bar{t} = \frac{\pi D q_0}{C_p \dot{Q}} z + t_0 \quad (3)$$

This linear relationship was verified experimentally and fully confirmed (experimental data are shown in two figures). The article proceeds to an extended theoretical development based on the above relationship and a comparison of the results with the work of other authors. It is concluded that, under a constant heat load, the temperature change along the length of the tube is linear. Best results are shown by a method proposed by L. S. Leybenzon for constructing the velocity and temperature profiles in the boundary sublayer; this method does not require a three-layer model of the boundary layer. From a comparison of the experimental data on the resistance coefficients and the hydrodynamic theory of heat transfer, it was established that the choice of an experimental relationship for the velocity distribution leads to the

Card 2/3

T. 11516-66

ACC NR: AT6003067

0

requirement that the constant coefficient in the resistance coefficient be reduced by approximately 8%. The investigations are not of a limited character and can be extended, without serious changes, to the region of changes in the Reynolds number greater than  $10^5$ . Orig. art. has: 105 formulas and 6 figures.

SUB CODE: 20/ SUBM DATE: 00/ ORIG REF: 003/ OTH REF: 002

TS  
Card 3/3

KUDRYASHEV, L.I., prof., doktor tekhn.nauk; ROMEYKO, N.F., inzh.

Combined use of the method of intermediate integration and the theory of similarity in solving problems of convective heat transfer. Sbor. nauch. trud. Kuib. indus. inst. no.8:197-205  
159. (MIRA 14:7)

(Differential equations) (Dimensional analysis)  
(Heat--Convection)

32272  
S/612/59/000/008/013/016  
D218/D304

26. 5200  
AUTHORS:

Kudryashev, L. I., Professor, Doctor of Technical Sciences, and Romeyko, N. F., Engineer

TITLE:

Simultaneous application of the method of intermediate integration and the theory of similarity to solving problems of convective heat transfer

SOURCE:

Kuybyshev. Industrial'nyy institut. Sbornik nauchnykh trudov, no. 8, 1959. Teplotekhnika; voprosy teorii, rascheta i proyektirovaniya, 197-205

TEXT: The authors are concerned with heat transfer in a confined medium. They show that whatever the flow conditions, both the resistance and heat transfer are determined by the temperature conditions at the wall. Existing theories of heat transfer in a confined medium are critically examined, and the theory of similarity is used to reformulate the problem in the case of turbulent flow. It is shown that the method of "intermediate integration" leads to the following expressions which are universal both for turbulent

Card 1/3

X

32272  
S/612/59/000/008/013/016  
D218/D304

Simultaneous application of ...  
and laminar flow in a confined medium:

$$\bar{r} \bar{c}_p \bar{w} \frac{\partial t}{\partial z} = \frac{2}{r_0} \lambda_w \left( \frac{\partial t}{\partial r} \right)_{r=r_0} \quad (a)$$

$$\frac{\partial p}{\partial z} = \frac{2}{r_0} \mu_w \left( \frac{\partial w}{\partial r} \right)_{r=r_0} \quad (b) \quad (12)$$

It is established that the formulae giving the coefficients of heat transfer and resistance should include the ratios of the viscosity and thermal conductivity at the wall and in the stream, rather than the ratio of the Prandtl numbers. It is shown that determination of the coefficients of heat transfer and resistance can be reduced to determining the radial derivatives of the tem-

X

Card 2/3

Simultaneous application of ...

<sup>32272</sup>  
S/612/59/000/008/013/016  
D218/D304

perature and velocity at the wall of the tube

$$\left(\frac{\partial t_1}{\partial r_1}\right)_{r_1=1} = C_1 Re_f^{n_1} Pr_f^{n_2} \left(\frac{\lambda_{10}}{\lambda}\right)^{n_3} \quad (34)$$

$$\left(\frac{\partial w_1}{\partial r_1}\right)_{r_1=1} = C_2 Re_f^{m_1} \left(\frac{\mu_w}{\mu}\right)^{m_2} \quad (35)$$

as functions of  $\mu_w/\bar{\mu}$  and  $\lambda_w/\bar{\lambda}$  [Abstractor's note: No explicit definition of symbols given.]

Card 3/3

X

L 16615-65 EWT(1)/ENP(m)/EPF(c)/EPF(n)-2/EPR/EPA(bb)-2/T/FOS(k)/EWA(1) Pd-1/  
 Pr-l/Ps-l/Pi-l/Pu-l ESD(t)/AEDC(a)/BSD/ASD(f)-2/ASD(p)-3 WH  
 S/0264/64/000/009/A035/A035  
 ACCESSION NR: AR4049289

SOURCE: Ref. zh. Vozdushny\*y transport. Svodny\*y tom, Abs. 9A245

AUTHOR: Kudryashev, L.I.; Romeyko, N.F.

TITLE: Application of the boundary layer theory to determinations of drag and heat exchange coefficients for constant heat stresses along the length of a round cylinder

CITED SOURCE: Tr. Kuyby\*shevsk. aviats. in-t. vy\*p. 15, ch. 2, 1964, 3-24

TOPIC TAGS: two layer flow, turbulent gas flow, gas flow heat exchange, friction drag, heat exchange, drag coefficient, boundary layer theory

TRANSLATION: The authors carried out a theoretical analysis of the process of heat exchange during turbulent flow of a gas with variable physical properties in a cylinder. It was assumed that a solution can be obtained, as for the case of constant physical properties, if some median values, integrated according to temperature, can be accepted as the physical parameters. The model considered was a two-layer flow. Velocity and temperature distribution in the streamline sublayer were assumed to be parabolic, or described by means of a polynomial. In the latter case, the condition of equality was

Card 1/2



L 16615-65

ACCESSION NR: AR4049289

introduced not only for the absolute values of velocity and temperature at the boundary of the streamline sublayer and the turbulent main flow segment, but also for their derivatives. It was assumed that the distribution of velocity and temperature in the turbulent main flow segment is expressed by an exponential function with an exponent of  $1/7$ . Constants participating in solutions to the problem were determined for Pr values of 0.68 and 0.722. The results of friction drag calculations were lower by 8% when compared with the Blasius equation. The results of heat exchange calculations coincided satisfactorily with experimental data obtained by the authors. Experimental conditions were not described. V. Popov

SUB CODE: ME, TD

ENCL: 00

Card 2/2

KUZ'MIN, N.I.; ROMEYKO, V.P.

Cabs of the new motor vehicles manufactured by the Minsk Automobile  
Plant. Avt.prom. no.9:32-33 S '61. (MIRA 14:9)

1. Minskiy avtozavod.

(Minsk--Motor vehicles)

PIK, I.Sh.; ROMEYKO, V.S.

Modernization of a high-frequency generator for heating molding compositions and for a further intensification of processes of the compression molding of phenoplasts. Plast.massy no.9:61-63 '61.  
(MIRA 15:1)

(Phenol condensation products) (Plastics--Molding)

DERKACH, Ya.S.; ROMEYKO, V.S.

Finishing of plastic goods by abrasive polishing. Plast.massy  
no.8:67-68 '61. (MIRA 14:7)

(Plastics)

ROMEYKOV, I. V.

"A Photoelectric Method of Measuring Color in Color Printing." Cand Tech Sci,  
Moscow Polygraphic Inst, 27 Dec 54. (VM, 15 Dec 54)

Survey of Scientific and Technical Dissertations Defended at USSR Higher Educational  
Institutions (12)

SO: SUM No. 556, 24 Jun 55

MALYUSOV, V.A.; ZHAVORONKOV, N.M.; MALAFEYEV, N.A.; ROMEYKOV, R.N.;  
Prinimali uchastiye: BABKOV, S.I.; UVAROV, O.V.; SOLYANKIN,  
L.N.; GRISHIN, D.M.

Effectiveness of regular packings in the rectification of water.  
Khim.prom. no.7:519-529 JL '62. (MIRA 15:9)  
(Packed towers)

HOROVITZ, Gyorgy; SZAKACS, Laszlo; ROMFA, Anna

New system of recording daily performance in weaving mills. Muhka  
szemle 5 no.10:14-18 0 '61.

ROMHIAN, Istvan, oklevles gépészmernok

Prefabricated open-air medium-voltage switchgears. Villamossag  
12 no. 3:76-80 Mr '64.

1. Tiszantul Electric Current Supply Enterprise.



BAKOS, Laszlo; ROMHANYI, Endre, dr., jogtanacsos

Architectural administrative questions of city planning.  
Építés-szemle 7 no.4:118-123 '63.

1. Építészeti Minisztérium Város- és Községrendezési  
Főosztálya.

G. ROMIANYI

"Pathomorphology of experimental exsiccation nephrosis." p. 418 (ACTA  
MORPHOLOGICA ACADEMIAE SCIENTIARUM HUNGARICAE, Vol. 2, no. 4, 1952, Budapest, Hungary)

SO: Monthly List of East European Accessions, L.C., Vol. 2 No. 7, July 1953, Uncl.

BANCA, Ilona; LOEVEN, W.A.; POMHANYI, Gy.

Histochemical studies of elastic fibres by the use of elastolytic enzymes separated by chromatography on dextran-sephadex column. Acta morph. acad. sci. Hung. 13 no.4:385-395 '65.

1. First Institute of Pathological Anatomy and Experimental Cancer Research (Director: Prof. J. Baló), University Medical School, Budapest, Department of Chemistry and Physics (Head: Dr. W.A. Loeven), Netherlands Institute for Preventive Medicine, Leiden, Institute of Pathological Anatomy (Director: Prof. Gy. Pomhanyi), University Medical School, Pécs. Submitted November 11, 1964.

ROMHANYI, Gy.

On the submicroscopic structure of the elastic fibres of the bovine ligamentum nuchae as revealed by the polarization microscope. Acta morph. acad. sci. Hung. 13 no.4:397-409 '65.

1. Institute of Pathological Anatomy (Director: Prof. Dr. Gy. Romhanyi), University Medical School, Pecs.

ROMHANYI, G. 1949

(Prosektor des Stadtischen Krankenhauses, Szombathely)

"The Submicroscopic Structure of Amyloid."

Schweiz. Ziet. Fur Path und Bakter., Vasle, 1949 12/3(253-262)

Abst: Exc. Med. V. Vol. 11, No. 12, p. 885

ROMHANYI, G, 1947

"Histological Evaluation of the Submicroscopic Fibre Elements."

Orvosok Lapja, Budapest, 1947, 3/39(1569-1574)

Abst: Exc. Med. V. Vol. 11, No. 4, p. 327

ROMHANYI, C. 1948

(Budapest Tud. I. sz. Belklinikajarol)

"Anatomy of Hypochloraemic Kidney."

Orvosi Hetilap, Budapest 1948, 89/21 (336)

Abst: Exc. Med. V. Vol. 11, No. 3, p. 222

ROMHANYI Gy and FOLDI M.

4732. ROMHANYI Gy and FOLDI M. I. med. Univ.-Klin. Budapest; Inst. für path. Anat., med. Univ., Pécs, Ungarn. \* Untersuchungen über den Lymphstrom der Niere. Observations on the lymph flow of the kidney ACTA MED.ACAD.SCIENT.HUNG. (Budapest) 1953, 4/3-4 (323-353) Graphs 1 Tables 10 Illus. 13

Acute experiments were made on anaesthetized dogs. The kidney of one side was used as control for the other experimental side, on which either the lymph vessels or the ureter were obstructed. In nonhydrated animals lymphatic obstruction resulted in an increased rate of water excretion, due to decreased tubular reabsorption of water; glomerular filtration was essentially unchanged. The raised Cl and Na excretion observed were also due to diminished reabsorption. Acute lymphatic obstruction did not diminish  $C_{PAH}$ ,  $T_{mg}$  or  $T_{PAH}$ . Post-mortem histological examination showed the presence of marked interstitial oedema. In the dog the capsular and pararenchymatous lymphatics are in connection with each other. For some time after the onset of hydro-nephrosis the lymphatics remove both the urine formed and the oedema fluid. At this time, renal necrosis rapidly follows lymphatic obstruction. Pickford - Edinburgh

SO: Excerpta Medica, Section II, Vol 7, No 9



*ROM HANYI, G*

HUNGARY/Morphology of Man and Animals. Lymphatic and R.E. Systems. S-3

Abs Jour: Referat. Zh.-Biol., No 1, 10 January 1958, 2866.

Author : Babics, A., Foldin, H., Renyi-Vamos, F., Romhanyi, G.,  
Ruunysak, I., Szabo, G.

Inst :

Title : The Space of Disse and the Hepatic Lymph System.

Orig Pub: Magyar Belorv. archivum., 1954, 7, No 1, 7-10.

Abstract: Two lymph vessels located next to the portal vein and receiving lymph flowing caudally from the liver, were ligated in cats. After a few days the animals were sacrificed. Widening of the lymphatics in the periportal space was found in histological preparations. Thus by ligation it was possible to cause stagnation of lymph in the spaces of Disse. In a series of histological sections it was found that there are no lymph vessels within liver lobules but lymph capillaries are seen only in the periportal space. The authors state that the spaces of Disse

Card : 1/2

-5-

FOLDI, M.; RISZNYAK, I.; ROMHANYI, G.; SZABO, G.; SOLTÍ, F.

Insufficiency of the lymphatic flow in the heart. Acta med. hung.  
6 no.1-2:61-75 1954.

1. I. Innere Klinik der Medizinischen Universität, Budapest und  
Pathologisch-Anatomisches Institut der Medizinischen Universität,  
Pecs.

(LYMPHATIC VESSELS, physiol.

eff. of ligation of cardiac lymph vessels on ECG &  
histol. in dogs)

(ELECTROCARDIOGRAPHY,

eff. of ligation of cardiac lymphatic vessels in dogs)

(HEART, pathol.

eff. of ligation of cardiac lymphatic vessels in dogs)

*Romhányi György*

BABICS, Antal, dr.; FOLDI, Haly, M., dr. RENYI-VAMOS, Ferenc, dr.; ROMHANYI,  
Gyorgy, dr. RUSZNYAK, Istvan, dr. SZABO, Gyorgy, dr.

Disse's spaces and the lymphatic system of the liver. *Magy. belorv.*  
arch. 7 no.1:7-10 Feb 54.

1. A Budapesti Orvostudományi Egyetem I. sz. Belklinikájának (Igazgató:  
Rusznay István dr. egyetemi tanár), Urológiai Klinikájának (Igazgató:  
Babics Antal dr. egyetemi tanár) és a Pécsi Orvostudományi Egyetem  
Korbonctani Intézetének (Igazgató: Romhányi György dr. egyetemi tanár)  
közleménye.

(LIVER, anat. & histol.

Disse's spaces & lymphatic system)

(LYMPHATIC SYSTEM

liver)

KOMHANYI, G.

GOMORI, P.; ROMHANYI, G.

Pathophysiological relations of morphological renal changes in hypochloremic exsiccosis. II. *Magy. belorv. arch.* 5 no.3:109-114 Sept 1952.  
(*CIML* 25:5)

1. Doctors. 2. Third Internal Clinic (Director -- Prof. Dr. Pal Gomori) of Budapest Medical University and Institute of Pathological Anatomy (Director -- Prof. Dr. Gyorgy Romhanyi) of Pecs Medical University.

KOMMUNYI, C.

EXCERPTA MEDICA Sec.5 Vol.9/12 Pathology Dec 56

3646. ROMHÁNYI G. Inst. für Pathol. Anat., Med. Univ. Pécs. \*Einfaches Verfahren zur Konservierung in natürlichen Farben. A simple procedure for preservation in natural colours VIRCHOWS ARCH. PATH. ANAT. 1956, 328/5 (573-575)

Description of a method of preservation which has been used by the author for 15 yr. for the storage of morbid-anatomical museum preparations. The method has the advantage that the preparations are kept in their natural colour for 10 yr. and longer. The method is based on a haemochromogen reaction induced in the fresh preparation: in the fixation fluid, haemochromogens are synthesized from reduced haem with various nitrogen bases. Airtight closure is necessary to prevent oxidative processes. Another advantage of the method is that it also serves for fixation, so that only 1 solution is required. Solution: formol (40%) 120 ml., pyridine 10 ml., crude nicotin (5%, in aqueous solution) 10 ml. (not absolutely necessary), technical or pure sodium hydrosulphurosum (dithionite) 20 g., distilled water ad 1000. Slight turbidities which may occur when dithionite is used can be eliminated by sedimentation and pouring-off. The preparation is fixed in the fluid, which is repeatedly poured off and renewed. After repeated renewal, the preparation can be finished, but care should be taken not to expose it too long to the air during mounting. Not only tissue colours on a haemoglobin basis are thus preserved, but also carotenoid

pigments and pyoid tinges, as well as the icteric discolorations of kernicterus.  
Loblich - Hannover (V, 1\*)

ROMHANYI, G.  
EXCERPTA MEDICA Sec.5 Vol.10/5 Gen.Pathology May57

1250. ROMHÁNYI G. Pathol. Inst., Univ. Pécs, Ungarn. \*Zur Frage der submikroskopischen Struktur des Amyloid. Submicroscopical structure of amyloid ZBL. ALLG. PATH. PATH. ANAT. 1956, 95/3-4 (130-138) Tables 1 illus. 5

The author observed in previous experiments that amyloid shows a stronger anisotropy when stained with Congo red, than in unstained sections. He concluded therefore that amyloid has a submicroscopical micellar structure. Other authors, however, suggested that the increased anisotropy does not allow any conclusions to be drawn as to the finer structure; according to them the increased anisotropy is caused by the multiplied, somewhat changed collagenous fibres; in their opinion amyloid is an amorphous substance. The present author uses different anisotropic staining methods (phenol, rivanol, tryptaflavin) and also a new one with Congo red stained sections, which are immersed in a phenol-canada mixture. The investigation of these preparations in polarized light is recommended. The method shows definitively the micellar structure of the amyloid substance.

Sümegei - Budapest

FOLDI, M.; CSANDA, E.; TOTH, K.; OBAL, F.; MADARASZ, I.; ROMHANYI, Gy.;  
VARGA, L.; WAGNER, A.

Melkersson-Rosenthal-Miescher syndrome. Orv. hetil. 105 no.6:  
245-250 9 F'64.

1. Szegedi Orvostudományi Egyetem, II. Belklinika, II. Fogászati Klinika, Elettani Intézet és Ideg-elmekortani Klinika;  
és Pécsi Orvostudományi Egyetem, Kóronctani Intézet.

JULESZ, Miklos, dr.; SZATMARI, Eva, dr.; HOLJO, Istvan, dr.;  
ROMHANYI, Gyorgy, dr.; Szuszekar, Judit

Effects of pituitary gland transplantation on Masugi's nephritis.  
Magy. belorv. arch. 9 no.3:82-84 June 56.

1. A Budapesti Orvostud. Egyetem I. sz. Belklinik. kozl. (Igaz.:  
Rusznay, Istvan, dr. egyetemi tanar).

(GLOMERULONEPHRITIS, exper.

Masugi's nephritis, eff. of pituitary transpl. in  
rabbits (Hun))

(PITUITARY GLAND, transpl.

eff. on Masugi's nephritis in rabbits (Hun))



*ROMHANYI, Gyorgy*

BABICS, Antal, dr.; FOLDI, Mihaly, dr.; RENYI-VAMOS, Ferenc, dr; ROMHANYI, Gyorgy, dr.; RUSZNYAK, Istvan, dr. SZABO, Gyorgy, dr.

The significance of the lymphatic system of the liver in choledochal stenosis and cholangitis. Magy belorv. arch. 7 no.3:86-91 June 54.

1. A Budapesti Orvostudományi Egyetem I. sz. Belklinikájának (igazgató: dr. Rusznyak Istvan egyetemi tanár) Urológiai Klinikájának (igazgató: dr. Babics Antal egyetemi tanár) és a Pécsi Orvostudományi Egyetem Kóronctani Intézetének (igazgató: dr. Romhányi György egyetemi tanár) közleménye.

(BILE DUCT, COMMON, stenosis,  
liver lymphatic system in)

(CHOLANGITIS, physiology,  
liver lymphatic system)

(LIVER,  
lymphatic system in cholangitis & choledochal stenosis)

(LYMPHATIC SYSTEM,  
liver, in cholangitis & choledochal stenosis)

*ROMHANYI, G.*

BALINT, P.; LASZLO, K.; FEKETE, A.; ROMHANYI, G.; GYORGPALY, J.

The protective effect of general anesthesia on posthemorrhagic renal changes. Acta physiol. hung. 6 no.1:57-67 1954.

1. Institute of Physiology of the Medical University, Budapest,  
and Institute of Pathological Anatomy of the Medical University, Pecs.

(KIDNEYS, pathol.

posthemorrhagic in dogs, protective eff. of general anesth.)

(NECROSIS, exper.

kidneys, posthemorrhagic, protective eff. of general anesth.)

(KIDNEYS, dis.

necrosis, posthemorrhagic in dogs, protective eff. of  
general anesth.)

(ANESTHESIA, eff.

protective eff. on posthemorrhagic renal changes in dogs)

~~ROMHANYI, Gy.~~

The relations between structure and function. Acta physiol. hung.  
Suppl. no.6:5-8 1954.

1. Pathologisch-Anatomisches Institut der Medizinischen Universität,  
Pecs.

(CELLS  
structural organiz.)

LISZKAI, Laszlo, dr.; ROMHANYI, Imre, dr.; FABER, Viktor, dr.

Cholesterol granuloma of the coronary artery. Orv. hetil.  
104 no.48:2281-2283 1 D '63.

1. Magyar Nephadsereg Egeszsegugyi Szolgalata.  
(CORONARY DISEASE) (CHOLESTEROL)  
(GRANULOMA) (PATHOLOGY)

FAZEKAS, I. Gyula; RÓMHANYI, Istvan; RENGEI, Bela

On the copper content of fetal organs. Kiserl. orvostud.  
15 no. 3:230-238 Je '63.

1. Szegedi Orvostudományi Egyetem Igazságügyi Orvostani Intézete  
(COPPER) (FETUS) (MATERNAL-FETAL EXCHANGE)

FAZEKAS, I. Gyula; RENGEI, Bela; ROMHANYI, Istvan

On the copper content of the organs of newborn rabbits.  
Kiserl. orvostud. 15 no. 3:239-243 Je '63.

1. Szegedi Orvostudományi Egyetem Igazságügyi Orvostani  
Intézete.

(COPPER) (ANIMALS, NEWBORN)

LUKACS, V. Ferenc, dr.; ROMHANYI, Jozsef, dr.

An epidemic of menigo-encephalo-myocarditis in newborn infants during the epidemic of Bornholm disease in Hungary in 1958. I. Clinical aspects. Orv. hetil. 101 no.17:589-593 24 Ap '60.

1. Budapesti Orvostudományi Egyetem, I. sz. Gyermekklinika.

(PLEURODYNIA EPIDEMIC in inf. & child)

(INFANT NEWBORN dis.)

(MENINGITIS in inf. & child)

(ENCEPHALITIS in inf. & child)

(MYOCARDITIS in inf. & child)

ROMHANYI, Jozsef, dr.; SIMON, Gyorgy, dr.; BANKI, Gyorgy, dr.

A case of strongyloidosis causing leukemoid reaction. *Gyermekgyogyaszat*  
12 no.11:328-330 N '61.

1. A Budapesti Orvostudományi Egyetem I sz. Gyermeklinikája (Igazgató:  
Gegesi Kiss Pal dr. egyetemi tanár, akadémikus) és az Országos Köz-  
egészségügyi Intézet (Igazgató: Bakats Tibor dr.) Parazitológiai  
Osztályának közleménye (Parazitológiai osztályvezető: Zoltai Nandor dr.)

(STRONGYLOIDIASIS blood) (LEUKEMIA)



ROMIANYI, M. (BUDAPEST, XI., Sztoczek u.2)

General correlations between the convection and influence currents as well as between the displacement and capacitive currents in quasi-stationary fields. Periodica polytechnica electr 6 no.1:25-43 '62.

1. Lehrstuhl für Elektronenrohren und Halbleiter, Technische Universität Budapest. Vorgelegt vom Vorstand des Lehrstuhls Dr. Ing. I.P. Valko.

EISERT Arpad, dr.; ROMHANYI, Tibor, dr.

Experiences in pancreas surgery. II. Pancreatic necrosis. Magy.  
sebeszet 13 no.4:209-214 Ag '60.

1. Szabolcs - Szatmar Megyei Tanacs Koshaza (Igazgato: Banko  
Laszlo dr.) I. sz. Sebeszeti Osztalyanak (foorvos: Eisert Arpad dr.)  
kozlemeny  
(PANCREAS dis.)

ROMHANYI, Tibor, dr.

Primary gastrectomy in a case of perforated gastric cancer.  
Magy sebeszet 13 no.6:369-370 D '59.

1. Szaboles-Szatmar Megyei Tanacs Korhaza (Igazgato-foorvos:  
Dr. Banko Laszlo) I. Sebeszeti osztalyanak (Foorvos: Dr. Eisert  
Arpad) kozlemenye.

(GASTRECTOMY)

ROMHANYI, Tibor, Dr.

Successfully operated case of recidivous diaphragmatic hernia.  
Magy. sebeszet 12 no.1:62-65 Mar 59.

1. A Szabolcs-Szatmar Megyei Tanacs Korhaza (Igazgato: Banko  
Iaszlo dr.) I. sz. sebeszeti osztalyanak (Foorvos: Misert Arpad  
dr.) kozlemenye.

(HERNIA, DIAPHRAGMATIC, surg.

successfully operated recidivous case (Hun))

MAJOR, Laszlo, dr.; ROMHANYI, Tibor, dr.

Lipoma of the colon with a simultaneous angiofibroma discharged  
by vias naturales. Orv.hetil. 102 no.3:134-135 15 Ja'61.

1. Szabolcs-Szatmar Megyei Tanacs Koshaza, II. Belgyogyaszati es  
I. Sebészeti Osztaly.  
(COLON neopl)  
(LIPOMA case reports)  
(ANGIOMA SCLEROSING case reports)

ROMHANYI, Tibor, dr.

Perforation of the cervical esophagus with a flexible gastroscope.  
Orv.hetil. 102 no.33:1565-1566 13 Ag '61.

1. Szabolcs-Szatmar Megyei Tanacs Korhaz, I. Sebeszeti Osztaly.

(ESOPHAGUS wds & inj) (GASTROSCOPY compl)

ROMIC, L.

Yugoslavia (430)

History and Description - Serials

One more unsuccessful maneuver. p. 12. REVIEW OF INTERNATIONAL AFFAIRS.  
(Federation of Yugoslav Journalists) Beograd. (Fortnightly journal on  
international problems. Published also in Serbo-Croatian as Medunarodna Politika.

East European Accessions List. Library of Congress, Vol. 1, no. 13,  
November 1952. UNCLASSIFIED "Card 1 of 2"

SELMECI, L.; ROMICS, L.

The role of the adrenal gland in the development of Shay-ulcer in the rat. Acta physiol. acad. sci. hung. 22 no.1:89-91 '62.

1. Institute of Pathophysiology, Medical University, Budapest.  
(STOMACH ULCER) (ADRENALECTOMY)



ROMHAN, Istvan, okleveles gepeszmernok

Use of peripheral transformer stations in the electric power supply of our towns in the countryside. Villamossag 10 no.12: 353-357 D '62.

1. Tiszantuli Aramszolgaltato Vallalat.

HUNGARY

FAZEKAS, I., Gyula, RENGETI, Bela, ROMHANYI, Istvan; Medical University of Szeged, Forensic Medical Institute (Szegedi Orvostudományi Egyetem, Igazságügyi Orvostani Intézet).

"Copper Content of the Organs of New-Born Domestic Rabbits."

Budapest, Kísérletes Orvostudomány, Vol. XV, No 3, June 1963, pp 239-243.

Abstract:[Authors' Hungarian summary] The copper content of 6-6 new-born rabbits from two sisters and a common father was determined immediately after birth. The copper content of the organs was much more uniform than in humans. This is explained by the similar copper intake of the mothers due to uniform feeding of long duration. The small differences found in identical organs are probably due to the individual variations of the fetal organs, mainly to the varying copper binding and catabolic effect of the cuproproteins and cuproenzymes. All Western references.

1/1

ROMHANYI, G.

Submicroscopic structure of elastic fibers. Acta morph. hung.  
5 no.3-4:311-328 1955.

1. Institut für pathologische Anatomie der medizinischen Universität  
Pecs (Vorstand: Prof. G. Romhanyi)  
Prof. Gyorgy Romhanyi, Pecs, Dischka Gy. u.5, Ungarn.  
(BLOOD VESSELS, anatomy and histology,  
submicroscopic structures of elastic fibers)

FOLDI, M.; ROMHANYI, G.

Significance of renal lymph circulation in hydronephrosis. Orv. hetil.  
94 no.12:315-318 22 Mar 1953. (CML 24:4)

1. Doctors. 2. First Internal Clinic (Director -- Prof. Dr. Istvan Rusznyak), Budapest Medical University and Institute of Pathological Anatomy (Director -- Prof. Dr. Gyorgy Romhanyi), Pecs Medical University.

HUNGARY

ROMHANYI, Gyorgy: Medical University, Institute of Pathology (Orvostudományi Egyetem Korbonctani Intezete), Pecs.

"Current Achievements of the Joint Study of Microstructure and Function, in the World-Literature and in Hungary."

Budapest, A Magyar Tudományos Akadémia Biológiai Tudományok Osztályának Közleményei, Vol VI, No 1-2, 1963, pages 31-43.

Abstract: Selected problems of the research carried out on ultrastructure are discussed by the author. The macromolecular structure of DNA, its anisotropic precipitation and anisotropic staining and the ultrastructure of the cell nuclei are discussed. The membrane system, ergastoplasm and the structural lipoids are presented. Several pictures and sketches accompany the article which was presented at the Structure and Function Symposium held in Tihany, Hungary, 2-3 July 1962. 19 Western, 7 Hungarian references.

1/1

10

ROMHÁNYI Gy. and FÖLDI M.

1. med. Univ. -Klin. Budapest; Inst für path. Anat., med. Univ., Pécs, Ungarn.  
\*Untersuchungen über den Lymphstrom der Niere. Observations on the lymph flow of the kidney  
ACTA MED. ACAD. SCIENT. HUNG. (Budapest) 1953, 4/3-4 (323-353) Graphs 1 Tables 10 Illus. 13

Acute experiments were made on anaesthetized dogs. The kidney of one side was used as control for the other experimental side, on which either the lymph vessels or the ureter were obstructed. In non-hydrated animals lymphatic obstruction resulted in an increased rate of water excretion, due to decreased tubular reabsorption of water; glomerular filtration was essentially unchanged. The raised Cl and Na excretion observed were also due to diminished reabsorption. Acute lymphatic obstruction did not diminish CPAH,  $T_m$  or  $T_{mPAH}$ . Post-mortem histological examination showed the presence of marked interstitial oedema. In the dog the capsular and parenchymatous lymphatics are in connection with each other. For some time after the onset of hydronephrosis the lymphatics remove both the urine formed and the oedema fluid. At this time, renal necrosis rapidly follows lymphatic obstruction.  
Pickford - Edinburgh (II,5)

SO: Excerpta Medica; Section V Vol. 7 No. 12

ROMHANYI GY.

1. med. Univ. -Klin. Budapest; Inst fur path. Anat., med. Univ., Pecs. Ungarn  
\* Untersuchungen Ober din Lymphstrom der Niere. Observations on the lymph flow of the kidney ACTA MED. ACAD. SCIENT. HUNG. (Budapest) 1953, 4/3-4 (323-353) Graphs 1 Tables 10 Illus. 13

Acute experiments were made on anaesthetized dogs. The kidney of one side was used as control for the other experimental side, on which either the lymph vessels or the ureter were obstructed. In non-hydrated animals lymphatic obstruction resulted in an increased rate of water excretion, due to decreased tubular reabsorption of water; glomerular filtration was essentially unchanged. The raised CL and Na excretion observed were also due to diminished reabsorption. Acute lymphatic obstruction did not diminish CPAH. TMG OR TmpAH. Post-mortem histological examination showed the presence of marked interstitial oedema. In the dog the capsular and parenchymatous lymphatics are in connection with each other. For some time after the onset of Hydronephrosis the lymphatics remove both the urine formed and oedema fluid. At this time, renal necrosis rapidly follows lymphatic obstruction.

Pickford - Edinburgh (II, 5)

SO: Excerpta Medica; section V vol. 7 No. 12

BABICS, A., von,; FOLDI, M.,; RENYI-VAMOS, F.,; ROMHANYI, Gy.,; RUSZNYAK, I.,;  
Szabo, Gy.

Lymphatic system of the liver and its pathological significance.  
Acta med. hung. 7 no.3-4:261-278 1955.

1. I. Klinik für innere Medizin und Urologische Klinik der  
Medizinischen Universität, Budapest, und Pathologisch-  
Anatomisches Institut der Medizinischen Universität, Pecs.

(LIVER,

lymphatic system, eff. of ligation of bile ducts)

(LYMPHATIC SYSTEM,

liver, eff. of ligation of bile ducts)

(BILE DUCTS, physiology

eff. of ligation on liver lymphatic system)



ROMHANYI, GY.

"Importance of Structure in Biological Functions." p. 705 (TERMESZET  
ES TUDOMANYSAG. Vol. 113, No. 12, Dec. 1954; Budapest, Hungary.)

So: Monthly List of East European Accessions, (EEAL), LC, Vol. 4, No. 4,  
April 1955, Uncl..

ROMHANYI, Jozsef, egyetemi docens

International Congress of Pediatricians. Magy tud 70 no.2:133  
F '63.

1. Budapesti Orvostudományi Egyetem.

\*

POLAND / Farm Animals. Honey Bees.

Q-6

Abs Jour : Ref Zhur - Biol., No 10, 1958, No 45321

Author : Roniar, Ludwik

Inst : Not given

Title : Nosema - the Deadliest Enemy of our Apiaries.

Orig Pub : Pszczelarstwo, 1957, 8, No. 3, 68-71.

Abstract : Nosematosis occurs in almost all apiaries of Poland, and the number of colonies lost during last years, show a disastrous increase. In 1954, in the apiaries of the Subcarpathian region, 95% of the colonies perished from nosematosis. Nosematosis constitutes one of the basic causes of the low honey harvests in Poland. A colony which is invaded by disease up to 40% produces either a low crop or no crop at all.

Card 1/1

15

ROMIC, I.

Yugoslavia (430)

and in French as Revue de la Politique Mondiale, Vol. 3, no. 14,  
July 16, 1952.

East European Accessions List, Library of Congress, Vol. 1, no. 13,  
November 1952. UNCLASSIFIED. "Card 2 of 2"

*D. ab*

*B111-1 Agriculture*

Atmospheric conditions in stalls. S. Romić (*Reviz. Sci. Agric., Zagreb, 1950, 18, 197--218*).—The temp., and  $CO_2$  and  $NH_3$  contents in the atm. of stone-built stalls are examined. P. J. BOYLE.

ROMIC, SLOBODAN

SOURCE (in caps); Given Names

(1)

Country: Yugoslavia

Academic Degrees:

Affiliation: / not given /

Source: Belgrade, Jugoslovensko pronalazastvo, No 7, July 1961, pp 6-9.

Data: "Brick Silo with Counter-Arches."

Authors:

VELJANOVIC, Jovan, Ing.  
ROMIC, Slobodan, Ing.

113

Romic, S.

Q-2

YUGOSLAVIA/Farm Animals - Horses.

Abs Jour : Ref Zhur - Biol., No 7, 1958, 30911

Author : Romic S.

Inst :

Title :

On the 450th Anniversary of the D'yakov Stud .  
(K 450-letiyu konnogo zavoda v D'yakove).

Orig Pub : Veterinaria (Jugosl.), 1957, 6, No 1, 114-120.

Abstract : The first mention of this Yugoslav stud appears in the year 1506. During Turkish domination, the Turkish pasha kept about 100 Arab mares in D'yakov. After liberation from Turks, the stud was reestablished by bringing the Arab mares from Constantinople and Egypt. In 1728, the stud numbered 86 mares, 5 stallions, and 288 youngs. From 1885 on, the stud was reorganized into the Lipitsa breed, and in 1943 it number 128 thoroughbred mares. During the last war, the stud sustained great losses;

Card 1/2

ROMIC, S.

"The influence of the gastric Yintestinal parasitic invasion upon the development & the formation of the body of the Lipetsanian (horses)

Vet. Archiv, 22 : 309-321, 1952



ROMIC, Dr. Ing Stjepan

"Prof. & chief of the Inst. of Vet. Medicine & Zoohygiene, Fac of Agric. & Forestry  
U. of Zagreb.

Vet: 1:28-33, 1954

YUGOSLAVIA/Microbiology - Microbes Pathogenic for Man and  
Animals. Bacteria. Mycobacteria.

F

Abs Jour : Ref Zhur Biol., No 22, 1958, 99503

Author : Forsek, Z., Tunkl, D., Romic, Z.

Inst : -

Title : Testing of Bovine Tuberculin on Artificially Sensitized  
Cattle. I. Sensitization of Cattle with Killed Tubercle  
Bacteria

Orig Pub : Veterinaria (Jugosl.), 1957, 6, No 4, 55

Abstract : No abstract.

Card 1/1

ROMICH, W. F.

"Sur la question de la dependance de la chaleur d'evaporation de la tension superficielle."  
Starobineta, G. L. et Romich, W. F. (p. 151)

SO: Journal of General Chemistry (Zhurnal Obshchei Khimii). 1937, Volume 7, No. 1.

ROMICKA, Anna

Crowzon's disease in 12-years old boy. *Pediat. Pol.* 40 no.6:  
633-635 Je '65.

1. Z Kliniki Pediatricznej Studium Doskonalenia Lekarzy AM w  
Warszawie (Kierownik: prof. dr. med. E. Wilkoszewski) i z Insty-  
tutu Reumatologicznego w Warszawie (Dyrektor: dr. med. W. Brühl).