

S/169/63/000/001/029/062
D263/D307

AUTHOR: ~~Wierzchowska, Zofia~~
TITLE: New concepts regarding the origin of earth tremors
in Upper Silesia
PERIODICAL: Referativnyy zhurnal, Geofizika, no. 1, 1963, 9,
abstract 1G60 (Przegl. gorn., 1962, v. 18, no. 7-8,
417-422 (Pol.))

TEXT: The author disputes the hypothesis of the tectonic origin of the tremors in the coal basin of Upper Silesia, by generalization of a large number of observational data. Rapid fadeout of the tremors away from the epicenter shows that the focus of these earthquakes is not situated at a depth of some kilometers as indicated earlier, but at the lesser depth of the mining zone. Greater explosions in the mining pit are as a rule accompanied by similar tremors and earth-slides. The intensively mined regions of Upper Silesia are distinguished by higher seismicity. Earth-slides and accompanying tremors are preceded by the collapse of ceilings,

Card 1/2

S/169/63/000/001/029/062
D263/D307

New concepts regarding ...

disturbance of props, and other effects in the pits; the quakes are felt much more strongly in the mines than on the surface. All the above facts agree in favor of a connection between the origin of earth tremors in Upper Silesia and the mining associated with exploitation of the coal seams. The author considers that not one of the tremors recorded in Upper Silesia over the past decade can be ascribed to tectonic causes.

[Abstracter's note: Complete translation]

Card 2/2

WIERZCHOWSKA, Z.

Communique of the Standardization Section of the Central Institute of Mining,
p. 32. (PRZEGLAD GORNICZY, Stalinograd, Vol. 11, no. 1, Jan. 1955.)

SO: Monthly List of East European Accessions, (EEAL), LC, Vol. 4, No. ⁶~~4~~, ⁴Jan. 1955,
Uncl.

BTH

WIERZCHOWSKI, A.

2

1108 561.68 : 591.577
Wierzchowski A. Modification of the Iszkowski Formulae.
"Modyfikacja wzorów Iszkowskiego". Gospodarka Wodna. No.
4-5. 1951. pp. 156-157; 1 tab.

The formulae discussed by the authors provide further solutions of the Iszkowski formula with Cm and Ch factors. Yet even the fixing of the optimum form of the formula is not likely, if applied mechanically, to produce in every instance, accurate results compatible with the actual position. Thus, for instance, the outline of the confines of the catchment area and the relative arrangement of affluents, together with the time required for the flood waves to reach their destination, have a marked effect on the magnitude of the inflow during the culmination period. These formulae may provide satisfactory results in certain average cases, but it is essential, if the catchment basin reveals peculiar features, to make allowance, by selecting the proper value for these factors, for such peculiarities in computations based on these formulae.

WIERZBOWSKI, Andrzej

Occurrence of Lower Kimeridgian in the Jurassic of the
Czestochowa region. Acta geol Pol 14 no. 1:151-167 '64.

1. Laboratory of the Palaeozoic and Mesozoic, Institute of
Geology, Polish Academy of Sciences, Warsaw.

POLAND

WIĘZBOWSKI, Andrzej

Stratigraphy Laboratory, Dept. of Geological Sciences, Polish
Academy of Sciences (Pracownia Stratygrafii Zakładu Nauk Geologicznych PAN)

Warsaw, Acta geologica polonica, No 2, Apr-Jun 1966, pages 127-200
plus 10 unnumbered pages of plates

"The upper Oxfordian and the lower Kimmeridge of the Wielun
Plateau."

Country : POLAND
 Category : Cosmochemistry. Geochemistry. Hydrochemistry D
 Abs. Jour : Ref. Jour - KHM., No 5, 1959, No. 14972
 Author : Mierzchowski, E.
 Institut. : POLISH ACADEMY OF SCIENCES
 Title : "Tonolites" from the Source Area of Biala
 Indzeka River in the Western Silesia
 Orig. Publ. : Bull. Acad. Polon. sci. Ser. sci. chim., Geol.
 et Geogr., 1958, 2, No 4, 203-206, XII
 Abstract : Tonolites and other intrusive rocks make up
 great bodies among metamorphic rocks of mica
 gneiss, amphibolites and paragneiss. Plutonic
 rocks form a series ranging from tonalites
 with microcline (up to 7%) to granodiorites,
 rather leucocratic monzonitic granites and
 pegmatites. All of these rocks have qualita-
 tively identical mineral compositions and dif-
 fer only in the quantitative ratios of the
 major components. In particular, the content

Card: 1/3

Category : Geochemistry, Geochemistry, Hydrochemistry
Vol. Year : Vol. Year - Month, No. 5, 1958; No. 11972

Author :
Institute :
Title :

Orig. Ref. :

Abstract Cont'd : of biotite is increased in tonalites. Study of the K_2O content in the rocks as a whole, and in the biotite and microcline from among these rocks, showed that although the total content of K_2O for tonalites and granodiorites is very similar, in tonalites which constitute the nucleus of intrusions almost the total amount of K_2O is found in biotite; at the same time, in granodiorites occurring on the margin of plu-

Card: 2/3

Country : POLAND D
Category : Cosmochemistry, Geochemistry. Hydrochemistry
Abs. Jour : Ref Zhur - Khim., No 5, 1959, No. 14972
Author :
Institut. :
Title :
Orig. Pub. :
Abstract : tonic rocks, a considerable part of the K_2O is
Cont'd found in feldspars.-- V. Kudryashova

Card: 3/3

1. Comparison of oils used in fish preparations. J. Wierchowicki and H. Drabikowska (Oddział Badania Żywności i Przedmiotów Użytku Filii Morskiej P.Z.H., Gdynia). *Roczniki Państwowego Zakładu Hig.* 2, 120-32 (1951) (French summary).—No detectable differences were found in the s, sapon, no., and I no. when the various oils used in the fish preps. were tested. L. J. Piotrowski

WIERZCHOWSKI J.

Zaleski, S., Drabidowska, H., and Wierzchowski, J., Odd. Badania Zywnosci i Przed. Uzytku Filii P. Z. H., Gdansk. *Bacteriological and chemical study of salted fish; palatability versus salinity (Polish text) ROCZNIKI PANSTW. ZAKL. Hig. 1952, 3 (431-442)

The relation between salinity and palatability was studied in codlings (Gadus Morrhua). Improperly salted fish rapidly became unpalatable, and when fish on the borderline of spoilage were properly salted, NH₃ and bacterial count decreased but an unpalatable product resulted.

Chem. Abstr.

SO: Excerpta Medica Section XVII Vol 1, No. 1

WIERZCHOWSKI, JOSEF

Chemical Abst.
Vol. 48 No. 9
May 10, 1954
Foods

Rapid methods for the determination of ammonia in decaying fish. Josef Wierzchowski, Hozef Borowik, and Maria Severin (Wojew. Stacja Sanit.-Epidemiol., Odd. Badania Zywosci, Gdansk). Roczniki Państwowego Zakładu Hig. 1953, No. 3a, 321-30 (English summary).—An organoleptic method for testing fresh fish was compared with the quant. detn. of Me_3N , NH_3 , and steam-volatilized bases. To det. NH_3 , the following method was used: to 2 g. of finely ground fish 40 ml. of 5% CCl_3COOH is added, mixed, and after 15 min. filtered through filter paper. Five ml. of the filtrate is added to 40 ml. distd. water, and an addn. of 5 ml. of Nessler's reagent follows. The results of the colorimetric detn. are expressed as Nessler no., whereby one grade corresponds to approx. 2 mg. of NH_3 /100 g. of fish. Because of its simplicity, rapidity, and reproducibility this method is suitable for use in sanitary-epidemiological station and for general sanitary control detns.
Richard Ehrlich

WIERZCHOWSKI, JOSEF

Chemical Abst.
Vol. 48 No. 9
May 10, 1954
Foods

(3)
Indole as an indicator of decaying fish. Josef Wier-
chowski and Maria Severin (Wojew. Stacja Sanitarno-
Epidemiol. Odd. Badania Żywności, Gdańsk). *Acta
Polon. Pharm.* 10, 161-8 (1953) (English summary).—Qual.
and quant. detns. of indole were made in decaying fish.
The indole content of fresh sea fish was 0-0.0008 mg./100 g.
Fish on the borderline of fitness for human consumption
contained 0.003-0.008, and decaying fish had 0.02-0.058
mg./100 g. No indole was found in fresh sweet-water fish;
still edible sweet-water fish had 0.0001-0.003, and decaying
had 0.04 mg./100 g. of fish. The increase in indole parallels
the progress of decay, therefore, the detn. of indole can be
used to evaluate the freshness of fish. Dilns. of Co(NO₂)₂
were used as standards for the colorimetric detn. of indole.
Richard Ehrlich

WIERZCHOWSKI, Jozef; JAROSINSKA, Halina

Detection and determination of putrefaction of certain types of fish; *Essex lucius* and *Bramis brama*. Acta Poloniae pharm. 11 no.2:131-136 1954.

1. Z Zakladu Nauki o Srodkach Sposywczych Akademii Medycznej w Gdansk. Kierownik: doc. dr J.Wierschowski.

(FISH,

**Bramis brama* & *Essex lucius*, determ. of putrefaction)

WIERZCHOWSKI, JOZEF

P O L

Testing and evaluating the caloric value of the most common Polish canned fish products. Józef Wierzchowski and Władysław Kasilski (Med. Acad., Gdansk, Poland). *Rocznik Państwowego Zakładu Hig 6, 75-84(1955)* (English summary).—Most common Polish canned-fish products were analyzed for caloric value, moisture, Ca, P, protein, fat, titrable acidity, and organoleptic quality. The following caloric values were obtained (cal./100 g.): eels in oil 425, sprats in oil 350, Baltic in oil 244, pickled herring 174, mackerel in tomato sauce 139, and perch in tomato sauce 85. Alina S. Szczesniak

WIERZCHOWSKI, JOZEF

Poland/Chemical Technology. Chemical Products and Their Application -- Food Industry, I-28

Abst Journal: Referat Zhur - Khimiya, No 2, 1957, 6740

Author: Wierzchowski, Jozef

Institution: State Foundation of Hygiene

Title: Investigation of Chemical Composition and Calorie Content of Fish Paste of Polish Manufacture

Original
Publication: Roczn. Panstw. zakl. hig., 1955, 6, No 4a, 473-442

Abstract: Fish paste (FP) and fish liver-paste (LP) differ substantially in chemical composition and contents in calories. Protein content of FP is of 19.1-25.9%, that of LP 10.4-14.62%; the fat content is respectively, 22.3 and 37.4%. Average calorie content (per 100 g) FP 280, LP 425 calories.

Card 1/1

WIERZCHOWSKI, J.

Wierzchowski, J. Fish is a good source of mineral salts important to the human organism. p.3.

GOSPODARKA RYBNA

Vol. 7, no. 5, May 1955

Warszawa, Poland

SO: Monthly List of East European Accessions, (E-EAL), LC, Vol. 5, No. 10 Oct.56

WIERZCHOWSKI, Jozef

WIERZCHOWSKI, Jozef. Dec.dr.

Fish oil. Farm.polska 11 no.2:29-30 Feb '55.

(FISH,
fish oil)

(OILS,
fish oil)

WIERZCHOWSKI, J.

POLAND/Food Processing Industry.

H.

Abs Jour : Ref Zhur - Khimiya, No 19, 1958, 65886

Author : Wierzchowski Jozef, Czarnowska Wanda, Pawlokowa Zofia
Inst : -
Title : An Investigation of Evaporated Milk Domestically Produced;

Orig Pub : Roczn. Panstw. zakl. hig., 1956, 7, No 5, 389-394.

Abstract : The results are cited of an investigation of the chemical composition and microfluid of evaporated milk with sugar developed by Polish plants in 1953-1956. A careful analysis of the productive process permitted eliminating repeated infection of the product.

Card 1/1

WIERZCHOWSKI, J.

Fish fat. p.17. Have the assignments of the 6-Year Plan in the fish industry
been fulfilled? p.19.
GOSPODARKA RYBNA (Polskie Wydawnictwa Gospodarcze) Warszawa
Vol. 8; no. 2, Feb. 1956

So. East European Accessions List Vol. 5, No. 9 September 1956

Wskiy Jozef

Med

Some chemical indicators of fish spoilage. Ybzel Wysz-
chowski. *Przemysl Sposzyncey* 10, 102-5(1950).—Com-
parison of several chem. methods for detn. of fish spoilage
gives a good correlation between the assay of NH_3 bases
(microdiffusion or distn. with steam) and the Walkiewicz
method. The last method, based on the estn. of turbidity
which develops after mixing the fish ext. with 0.1% HgCl_2 ,
offers great advantages owing to its speed and simplicity.
It gives a clear pos. reaction when steam distn. indicates

about 35 mg. NH_3 in 100 g. fish. Detn. of Me_3N is not
suitable for practical measurement of fish spoilage because of
its low sensitivity and great variability of the results.

W. Szybalski

POLAND / Chemical Technology, Chemical Products and Their
Application. Food Industry.

H-28

Abs Jour : Ref Zhur - Khimiya, No 5, 1959, No. 17450

Author : Wierzchowski, J.^{2:21}; Severin, M. K. P.

Inst : Not given

Title : Content of Tin and Iron in Certain Fish Preserves

Orig Pub : Roczn. Panstw. zakl. hig., 1957, 8, No 5, 481-493

Abstract : Presented are data on the determination of Sn, Fe, acidity of oil, and acidity of tomato sauce in 6 varieties of fish preserves used in the studies of rates at which the above metals migrated into the contents of these preserves. Interdependence between acidity of oil and tin content has been established.

Card 1/1

H-120

WIERZCHOWSKI, JOSEF.

POLAND/Chemical Technology - Chemical Products and Their
Application, Part 3. - Fermentation Industry.

II-27

Abs Jour : Ref Zhur - Khimiya, No 14, 1958, 48405
Author : Jozef Wierzchowski, Wanda Czarnowska, Maria Severin
Inst : State Institute of Hygiene.
Title : Sanitary-Hygienic Evaluation of Samples of Bottled Beer.
Orig Pub : Roczn. Panstw. zakl. hig., 1957, 8, No 6, 549-556
Abstract : No abstract.

Card 1/1

...LAND/Chemical Technology - Chemical Products and Their
Application. Food Industry.

H-28

Abs Jour : Ref Zhur - Khimiya, No 8, 1958, 26916
Author : Wierzchowski Josef
Inst :
Title : Sorbic Acid -- A New Preservative for Food Products.
Orig Pub : Przem. spozywczy, 1957, 11, No 10, 419-421
Abstract : A review. Data on solubility of sorbic acid in ethanol,
acids, and water are included.
Bibliography 13 references.

Card 1/1

- 81 -

WIERZCHOWSKI J.
EXCERPTA MEDICA Sec'17 Vol 5/11 Public Health Nov 59

3722. EVALUATION OF THE STATE OF HYGIENE OF PRODUCTION IN
SELECTED MILK SHOPS IN GDAŃSK - Ocena stanu higienicznego
produkcji w wytypowanych barach mlecznych w Gdańsku - Wierzchow-
ski J., Czarnowska W. and Szymikowski J. Działu Hig.
Żywności i Żywności Wojewódzk. Stacji, Sanit.-Epidemiol., Gdańsk -
ROCZN. ZAKŁ. HIG. (Warsz.) 1959, 10/1 (51-60) Graphs 2 Tables 3

The authors carried out investigations for the purpose of hygienic evaluation of
production of meals served in various milk shops in Gdańsk. Investigations con-
sisted of both sanitary inspection of the milk shops as well as laboratory analysis
of the samples collected during the inspection. Accepting the presented method of
collecting samples in reference to bacteriologic purity the authors propose the
following norms: (a) for table utensils - coli and enterococcus titre above 1, num-
ber of micro-organisms on the standard surface up to 500; (b) for the hands of the
staff - coli and enterococcus titre over 1, number of micro-organisms on the
inner surface of the right hand up to 50,000.

WIERZCHOWSKI, Jozef

A biological study of the nutrient value of raw and preserved fish.
Cesk. hyg. 7 no.1:20-27 F '62.

1. Ustav pro vyzkum potravin lekarske fakulty, Gdansk.
(FISH nutrition & diet)

WIERZCHOWSKI, Jozef, prof. dr.

Cold sterilization. Farmacja polska 18 no.12:277-283
25 Je '62.

*

WIERZCHOWSKI, Jozef; PAWLAKOWA, Zofia

Evaluation of usefulness of certain seasonings. Pt.1. Roczn
panstw zakl hig 14 no.1:79-83 '63.

1. Department of Articles of Common Consumption, School of
Medicine, Gdansk, and Division of Hygiene of Feeding and Food,
School of Statistics and Economics, Gdansk.

WIERZCHOWSKI, Jozef; CZARNOWSKA, Wanda; GANOWIAK, Zenon; SEVERIN, Maria

Hygienic evaluation of industrial ice cream production. Roczn
panstw zakl hig 14 no.6:529-536 '63.

1. Department of Food Science, School of Medicine, Gdansk, and
School of Statistics and Economics, Gdansk.

WIERZCHOWSKI, Jozef, prof.dr.

First scientific session of the Department of Pharmacy of
the School of Medicine in Danzig. *Farmacja Pol.* 19 no.17/18:
365-367 25 S'63

*

WIERZCHOWSKI, Jozef, prof. dr

"Laboratory manual for food analysis" by Stanislaw Krauze,
Zbigniew Bozyk, Lech Piekarski. Reviewed by Jozef Wierzchowski.
Farmacja Pol 19 no. 23/24:514 23 D '63.

*

WIERZCHOWSKI, K.L.

POLAND/Physical Chemistry - Molecule, Chemical Bond.

B-4

Abs Jour: Referat. Zhurnal Khimiya, No 2, 1958, 3545.

Author : A. Tramer, K.L. Wierzechowski.

Inst : Academy of Sciences of Poland.

Title : Vibration Spectrum of Carbonyl Cyanide.

Orig Pub: Bull. Acad. polon. sci., 1957, Cl. 3, 5, No 4, 411-415, XXXIII.

Abstract: The infrared absorption spectrum of $\text{CO}(\text{CN})_2$ vapors in the range from 2 to 14μ and under the pressure of 10 to 120 mm of mercury column and the Raman spectra in liquid phase and ether solution were studied. The basic frequencies corresponding to the valence vibrations were identified by comparing the intensities and contours of bands in the infra-red spectrum. 6 of the 7 possible deformation frequencies are observed in Raman spectrum, which is confirmed by the analysis of overtones and

Card : 1/2

-26-

POLAND/Physical Chemistry - Molecule, Chemical Bond.

B-4

Abs Jour: Referat. Zhurnal Khimiya, No 2, 1958, 3545.

component tones of the infrared spectrum. According to the analysis of component tones, it is possible to assume the presence of a frequency of about 370 cm^{-1} . The molecule symmetry is assumed to be C_{2v} . The fundamental frequencies are (in cm^{-1}): in the infrared spectrum ν_1 2245; ν_2 1720; ν_3 714; ν_6 2245; ν_7 1115; ν_{10} (370); in the Raman spectrum ν_1 2248, ν_2 1709; ν_3 710; ν_4 520; ν_5 142; ν_6 2248; ν_8 565; ν_9 306; ν_{11} 475; ν_{12} 255. See also RZhKhim, 1958, 3539.

Card : 2/2

-27-

WIERZHOWSKI, K.L.

POLAND/Optics - Spectroscopy

K-7

Abs Jour : Ref Zhur - Fizika, No 3, 1958, No 7082

Author : Tramer A., Wierzhowski K.L.

Inst : Institute of ~~Physics~~, Polish Academy of Sciences; the University, Warsaw Poland

Title : The Structure of Carbonyl Cyanide

Orig Pub : Bull. Acad. polon. sci., 1957, Cl. 3, 5, No 4, 417-420, XXXIII

Abstract : The forced constants of carbonyl cyanide (I) are calculated by the Vol'kenshteyn, El'yashevich and Stepanov method. As the zero approximation, use was made of data for the unsaturated nitrils (II) and acetone. The calculated values of the vibrational frequencies are in good agreement with the experimental ones and confirm the interpretation given by the authors (see Abstract 7081) for the frequencies of I. The magnitudes of the forced constants of I are evidence of a stronger coupling between the double and triple bonds in I than in II. The high reactivity of I is explained by the greater polarizability of the molecule.

Card : 1/1

Wierzchowski, K.L.

POLAND/Physical Chemistry - Molecule, Chemical Bond.

Abs Jour: Referat. Zhurnal Khimiya, No 2, 1958, 3540.

Author : A. Tramer, K.L. Wierzchowski.

Inst : Academy of Sciences of Poland.

Title : Vibration Spectra and Force Constants of Nitriles.

Orig Pub: Bull. Acad. polon. sci., 1957, Cl. 3, 5, No 3, 335-341, XXVII.

Abstract: An approximate computation of force constants of saturated (I) and unsaturated nitriles (II) and dicyanogen was carried out by the method of Yeliashevich and Stepanov. The constants in each group were assumed to be equal. The groups CH_2 and CH_3 were excluded in some molecules from the computation because of their approximate internal symmetry. The rise of the force constant of the link C-C from $K = 7.02$ in hydrocarbons to $K_c = 8.0$ in I, 8.3 in II and 10.0 in III and the simultaneous drop of the constant K of the link $\text{C} \equiv \text{N}$ indicate a strong hyperconjugation (in I) and conjugation (in II and III) of links. A

Card : 1/2

-24-

POLAND/Physical Chemistry - Molecule, Chemical Bond.

B-4

Abs Jour: Referat. Zhurnal Khimiya, No 2, 1958, 3540.

general interpretation of all molecule spectra is given. The characteristic peculiarities of nitrile spectra in the range from 100 to 600 cm^{-1} are explained by a strong interaction of the completely symmetrical coordinates γ and w .

Card : 2/2

-25-

WIERZCHOWSKI, K.
SHUGAR, D.

Photochemistry of nucleic acids and of their components. p. 187

POSTEPY BIOCHEMI. (Polska Akademia Nauk. Komitet Biochemiczny)
Warszawa. Vol. 4, no. 2, 1958

Poland/

Monthly List of East European Accessions Index (EEAI), IC, Vol. 8, no. 6, June 1959
Uncl.

SHUGAR, D.; WIERZCHOWSKI, ^{K.}L.

Photochemistry of nucleic acids, nucleic acid derivatives and related compounds. Postepy biochem. 4 no.2;243-296 Suppl. 1958.

(NUCLEIC ACIDS

photochem., review)

(NUCLEOSIDES AND NUCLEOTIDES,

photochem., review)

WIERZCHOWSKI, K.L.

7
Structure and photochemical behavior of nucleic acids and related components. D. Shugar and K. L. Wierzchowski (Acad. Sci. Warsaw). J. Polymer Sci. 31, 269-80 (1958). A study was made of the photochem. behavior at 2537 Å. of 2', 3', 5'- and cyclic 2', 3'-cytidylic acids and various preps. of apurinic, ribonucleic, and deaminated ribonucleic acids. Their behavior is qualitatively similar and support the suggestion of H bonding in cytosine nucleosides and nucleotides between the pyrimidine 2-carbonyl and the 5'-sugar hydroxyl which influences the photochem. reaction.
M. H. Danzig

JW
1/1

3
2 May

WIERZCHOWSKI, K.L.; SHUGAR, D.

Studies of reversible photolysis in oligo- and poly-uridylic acids.
Acta biochim. polon. 6 no.3: 313-334 '59.

1. Instytut Biochemii i Biofizyki Polskiej Akademii Nauk, Warszawa.
(NUCLEOSIDES AND NUCLEOTIDES chem.)

WIERZCHOWSKI, K.L.; SHUGAR, D.

Photochemistry of model oligo- and polynucleotides. II. Homopolymers of adenylic, guanylic and cytidylic acids and several heteropolymers. Acta biochim.polon. 7 no.2/3:377-399 '60.

1. Institute of Biochemistry and Biophysics, Polish Academy of Sciences, Warsaw.

(NUCLEIC ACIDS chem)

(NUCLEOSIDES AND NUCLEOTIDES chem)

(ULTRAVIOLET RAYS)

WIERZCHOWSKI, K.L., SHUGAR, D.

Photochemistry of cytosine nucleosides and nucleotides. II. Acta
biochim. polon. 8 no.2:219-234 '61.

1. Institute of Biochemistry and biophysics, Polish Academy of Sciences,
Warsaw

(NUCLEOSIDES AND NUCLEOTIDES chem)

WIERZCHOWSKI, Kazimierz Lech

Shape, size, and secondary structure of the particles of nucleic acid in solutions according to their physicochemical properties. Postepy mikrobiol 2 no. 3: 311-360 '63.

1. Instytut Biochemii i Biofizyki, Polska Akademia Nauk, Warszawa.

*

WIERZCHOWSKI, K.L.

The Fourth International Congress of Photobiology in Oxford,
July 26-30, 1964. Kosmos biol 14, no.1:108-110 '65.

WIERZCHOWIECKI, Michal

Serologic investigations and their interpretation in systemic
lupus erythematosus. Pol. tyg. lek. 20 no.21:763-765 24 My '65.

1. Z I Kliniki Chorob Wewnętrznych AM w Poznaniu (Kierownik:
doc. dr. med. K. Jasinski).

WIERZCHOWIECKI, Michal; ZEROMSKI, Jan

Antiglobulin consumption and immunofluorescence tests in the diagnosis of systemic lupus erythematosus. Pol. arch. med. wewnet. 35 no.7:1019-1024 '65.

1. Z I Kliniki Chorob Wewnetrznych AM w Poznaniu (Kierownik: doc. dr. med. K. Jasinski) i z Zakladu Anatomii Patologicznej AM w Poznaniu (Kierownik: doc. dr. med. P. Gabryel).

WIERZCHOWSKI, Przemyslaw, mgr inz.

Problems of structure strength in ship design. Bud
okretowe Warszawa 9 no.4:118-120 '64.

1. Research Center of the Shipbuilding Industry, Central
Ship Designing Office No. 1, Gdansk.

WIERZCHOWSKI, P. 131 AND 132 (1951) PROCESSES AND PROPERTIES INDEX 140 AND 141 (1951)

BC H 3

Hydrocarbons of the terpene-aromatic series.
II. Bornylbenzene. L. KAMIEŃSKI and P. WIERZCHOWSKI (Roczn. Chem. 1935, 15, 92-98).—Bornyl chloride, $C_{15}H_{25}$, and $AlCl_3$ are maintained under reduced pressure (20-30 mm.) for 18 hr., with occasional addition of $AlCl_3$ in C_6H_6 , when bornylbenzene, b.p. 117-118°/1.5 mm., [$p-NO_2$], b.p. 168-169°/1 mm., $p-NH_2$, b.p. 147-148°/1 mm., $p-SO_2H$, $p-SO_2NH_2$, m.p. 107°, and $p-Br$ -derivative (I), b.p. 154-155°/1 mm., is obtained in good yield. p -Bornylbenzoic acid, m.p. 100°, is obtained by heating Mel, I, Mg, and (I) in K_2O at 36° for 4 hr., and then passing CO_2 through the mixture at 0° for 3 hr.

R. T.

ASB-SLA DETALLURGIKAL LITERATURE CLASSIFICATION

131 132 133 134 135 136 137 138 139 140 141 142 143 144 145 146 147 148 149 150 151 152 153 154 155 156 157 158 159 160 161 162 163 164 165 166 167 168 169 170 171 172 173 174 175 176 177 178 179 180 181 182 183 184 185 186 187 188 189 190 191 192 193 194 195 196 197 198 199 200

WIERZCHOWSKI, P. a-3

BC

Oxidation of anisole and *o*-anisole by selenium dioxide. P. Wierzychowski (Rocz. Chem., 1936, 10, 451-454). Anisole is heated with SeO₂ in NaOH (3 hr. at the b.p.), the product is filtered from pptd. Se. NaOH is removed at 100°, and the residue is extracted with Et₂O. The following substances were identified in the extract: piperonylaldehyde (I), *o*- and *p*-hydroxyanisole, and *l*-ethoxyanisole. *o*-Anisole (II) and SeO₂ yield (I) and *o*-piperonylpropene: *o*-anisole, m.p. 38-40°; (II) and SeO₂ in xylene (1 hr. at the b.p.) afford a substance, C₁₀H₈O₂Se, m.p. 122°. R. T.

Common Elements
Common Variables Index
OPEN MATERIALS INDEX
ASTM-SLA METALLURGICAL LITERATURE CLASSIFICATION
AUTHOR INDEX
SUBJECT INDEX
SYMBOLS INDEX
FIRST AND LAST LETTERS

WIERZCHOWSKI, P.:MYSZKOWSKI, L.

Chromatographic salting out of proteins. Acta physiol. polon. 3 no.
3:334-348 1952. (GLML 23:5)

1. Of the Institute of General Chemistry (Head--Prof. P. Wierschowski,
M. D.) of Warsaw Medical Academy.

WIERZCHOWSKI, Piotr; MYSZKOWSKI, Leopold

Diagrams of chromatographic desalination of blood proteins. Polskie arch. med. wewn. 25 no.1a:217-218 1955.

1. Z Zakladu chemii ogolnej w Warszawie; kier. prof. dr. P.Wierzchowski.
(BLOOD PROTEINS, determination
chromatographic diagrams of desalination)
(CHROMATOGRAPHY
of blood proteins, diagram of desalination)
(SALTS
blood proteins, diagram of chromatographic desalination)

WIERZCHOWSKI, Piotr; KRUZE, Dariusz; SZUKALSKI, Bogdan; ZIOLECKA, Izabela

The fractionation of tuberculin by salting out on the starch column.
Postepy biochem 7 no.1:41-48 '61.

(TUBERCULIN chem) (PROTEINS chem)

WIERZCHOWSKI, P.; JANCZARSKI, I.; KRUZE, D.

The method of combined column-paper chromatography applied to the determination of amino acids. Acta biochim. pol. 9 no.4:343-349 '62.

1. Department of General Chemistry, Medical School, Warszawa.
(AMINO ACIDS) (CHROMATOGRAPHY)

WIERZCHOWSKI, Piotr; ADAMIEC, Arnold; KONIECZNY, Wacław; POLUS, Elżbieta;
SIECZKOWSKA, Kazimiera

Production of gibberellic acid by means of biosynthesis. Acta
pol. pharm. 19 no.2:97-101 '62.

1. Z Instytutu Antybiotyków w Warszawie Dyrektor: mgr inż. F.Ulak.
(GIBBERELLINS metab)

ADAMIEC, A.; PASS, L.; WIERZCHOWSKI, P.

Biological test for detecting biologically active gibberellins in chromatograms. Acta soc botan Pol 31 no.4:637-649 '62.

1. Zaklad Biochemii Instytutu Antybiotykow, Warszawa.

ADAMIEC, A.; PASS, L.; WIERZCHOWSKI, P.

Detection of gibberellins A₁-A₄ on chromatograms. Acta
soc botan Pol 33 no.2:351-357 4'64.

1. Department of Biochemistry, Institute of Antibiotics,
Warsaw.

FOLIANE

WIERZUCHOWSKI, Piotr, DABKOWSKA, Renata, and FOMPERS, Monika,
Department of General Chemistry (Zaklad Chemii Ogolnej), AM
[Akademia Medycyna, Medical Academy] in Warsaw.

"Respiration of *Streptomyces Aureofaciens* During Unbuffered
Fermentation."

Warsaw, *Medycyna Doświadczalna i Mikrobiologia*, Vol 15,
No 1, 63, pp 69-73.

Abstract [Authors' English summary modified] Procedure,
suitable for both experimental work and tank fermentation,
is described for determining the respiration of X-60 strain
of *S. aureofaciens* (CO₂ absorbed in barium hydroxide). Corn
steep or a mixture containing amino acids, sucrose, and mi-
neral salts were used as medium. Course and intensity of
respiration found to depend on type of medium and growth
phase, the curve showing 2 or 3 characteristic maxima. A
curve of 2 combined cultures, one 12-hrs older than the other,
resembled the curve obtained by superimposing curves from two
cultures shifted by a half-phase and had no maxima. The 27
references are about equally divided between East and West.

1/1

RYMARSKI, Witold, mgr. inz.; WIERZCHOWSKI, Szczepan, mgr. inz.

Influence of the time of exploitation and intensity of airing
upon the origination of endogenous fires in thick deposits.
Wlad gorn 13 no.4:117-122 Ap '62.

82a Science and technique in Soviet Union. V. L. Zaitku and T.
Wierchowki. *Nafta-Kraakow*, 1954, 10, 40-2 --Mechanics
are described with drawings and instructions
Hydraulic equipment designed in Kamensk is
described.

Wierzechowski, Z.

POL.

1068. Determination of alkaloids in fodder lupins.
II. Gravimetric and colorimetric micro-methods.
Z. Wierzechowski (*Rośl. Nauk. Rolniczym.*, II, 1964,
67-489-469).—Ground sweet-lupin seed (0.02 to
0.1 per cent. of alkaloid) is extracted with ether-
chloroform and the extract is evaporated to dryness
in a vacuum. The aq. acid extract of alkaloids in
the residue is treated with a 1 per cent. ammonium
reineckate soln. After 12 hr. at 4° to 5° C, the
ppt. is collected on a glass filter (porosity, 3),
washed with water and dissolved in acetone. The
intensity of the purple coloration is determined
photometrically. Reineckate solutions containing
0.3 to 6.0 mg of alkaloid in 5 ml of acetone follow
the Beer-Lambert law. Alternatively, the rein-
eckate ppt. is dried at 101° to 102° C and weighed.
The conversion factor (ppt. → alkaloid) for yellow
lupin is 0.32; for blue lupin in \approx 1-mg amounts
the factor is 0.32 and for larger amounts, 0.34; for
white lupin, the corresponding values are 0.30 and
0.31. Crystals of the reineckates of sparteino-,
lupinino-, lupanino- and hydroxylupanino are des-
cribed and photomicrographs are presented.
A. G. POLLARD

WIERZCHOWSKI, Zenon, prof. dr.; AKSANOWSKI, Ryszard; JURZYSTA, Marian

Determination of the total amount of Papaver plant alkaloids. Chem
anal 5 no.4:671-781 '60. (EEAI 10:9)

1. Department of General Chemistry, School of Agriculture, Lublin.

(Poppy) (Alkaloids)

WIERZCHOWSKI, ZENON

Influence of temperature, oxygen, and light on the carotene content of green forages during drying. Zenon Wierzchowski. *Roczniki Nauk Rolniczych* 69, Ser. B, 103-94 (1955) (English summary).--The influence of some external factors on the provitamin carotene content of green forage plants was studied during their dehydration and storage. The forage plants studied were yellow lupine, alfalfa, and bush rye. Field drying of alfalfa resulted in 95-100% losses of carotene. Drying in the shade resulted in 50% losses. Carotene losses under artificial drying at high temps. amounted to 6-69%. Lowest losses were obtained by drying at 50-60° with ventilation. The highest losses occurred at 105°. Highest losses of carotene corresponded to a high moisture content of the dried material. A rapid lowering of moisture content of the vegetative material to a level interrupting the decompn. processes preserved the carotene. Vacuum drying (50-100 mm. Hg at 50°) was the most sparing on the carotene content. Losses of carotene amounted to only 0.2-3%. In an atm. of CO₂ losses were 11-23%. Drying with ventilation resulted in losses of 31-8%. Sunlight was the most destructive external factor on the carotene content of fresh plants. Forage lupine-leaf

meal obtained by drying with ventilation and kept in hermetic clear glass containers for 2.5-4.5 years still contained 16-77 mg. of carotene/kg. Excellent preservation of carotene for 16-17 months was achieved in hay meals by storing the meals in dark glass at low temps. Losses amounted to 3-4%. Vacuum-dried meals rich in carotene were less stable. A significant fraction (32-48%) of their carotene content appears to occur in a more labile form. In hays additionally dried at 105° the losses were very low (4-14%). The stability of carotene in fresh vegetative pulp was influenced as follows: (1) more rapid trituration with water (19-26% loss), (2) sunlight irradiation for 2 hrs. (65% loss), (3) irradiation with a quartz-tlg light (53% loss), (4) 3% H₂O₂ treatment for 2 hrs. (70% loss), (5) 1% solns. of HCHO or hydroquinone lowered losses (by 32-65% for HCHO), (6) strongly alk. conditions tended to preserve carotene: after 20 hrs. at pH 13 losses were 4.5 0%; after 20 hrs. at pH 0.3 losses were approx. 20%. Temp. variations between 0 and 18° did not influence the amt. of losses.
Ernest G. Jaworski

WIERZCHOWSKI, Z.

COUNTRY : POLAND
CATEGORY : Cultivated Plants. Potatoes, Vegetables, Cucurbits. M
ABS. JOUR. : RZhBiol., No. 23 1958, No. 104712
AUTHOR : Wierzcowski, Zenon
INST. : Pulawy Zootechnical Institute
TITLE : Variations in the Carotene Content in Forage Plants
During Vegetation Period.
ORIG. PUB. : Roczniki Nauk Rolniczych 69, Ser. B., 303-4, 1955.
ABSTRACT : The carotene content (C) in the stems, leaves, and flowers in the local early hybrid variety of alfalfa, red clover, yellow forage lupine, orchard grass, meadow fescue, timothy, perennial rye grass and tall oat grass, was determined at the Zootechnical Institute in Pulawy (Poland). The greatest C content was found in lupine (75.8 mg% of the dry weight from one clump) at the end of blossoming; in clover (70.3 mg%) at budding stage, in rye (70.6 mg%) at the end of earing. Distinguished by the smallest C content were

Card: 1/2

60

COUNTRY	:		
CATEGORY	:		M
ABS. JOUR.	:	RZhBiol., No.23 1958, No. 104712	
AUTHOR	:		
INST.	:		
TITLE	:		
ORIG. PUB.	:		
ABSTRACT	:	the rye grasses (42 and 48 mg%) and alfalfa (45.5 mg%). The stems contained considerably less C (2-15 mg%) than the leaves (30-46 mg%) and the flowers (13-19 mg%). -- I. N. Zaikina	

Card: 2/2

[POLAND

LEONOWICZ, A., E. SAPIECHA and Z. WIERZCZYNSKI; Department of General Chemistry (Katedra Chemii Ogólnej), College of Agriculture (Wysza Szkoła Rolnicza), Lublin.

"Xanthophylls in Tree Leaves During the Vegetation Period"

Warsaw, Bulletin de l'Académie Polonaise des Sciences: Série des Sciences Biologiques, Vol. X, No. 12, 1952, pp 505-512.

Abstract: [English article] Report on a systematic study of how the contents of xanthophylls and carotenes change in the leaves of beech and oak from May to October. Several other species of deciduous trees were similarly investigated in the autumn. Procedures and results are discussed. 2 tables, 2 diagrams; 7 references, mostly Western.

0/1

WIERZCHOWSKI, Zenon; AKSANOWSKI, Ryszard [deceased]; JURZYSTA, Mariar.

Provitamin carotene in the green forage of *zea mays* esp. *indentata*.
Rocz nauk roln rosl 88 no.2:259-275 '64.

1. Department of General Chemistry, College of Agriculture, Lublin.

WIERZCHOWSKI, Zygmunt, dr inż.

Torsion of the boom lemniscate of seaport cranes, taking into consideration the torsional rigidity of the entire boom. 'Przeł mech 22 no.15:480 10 Ag '63.

1. Katedra Maszyn Dźwigowych i Przenosnikowych, Politechnika, Gdansk.

WIERZCHOWSKI, Zygmunt, dr inż.

Necessity of introducing new elements into the characteristics of a certain group of shipyard cranes. Bud okretowe Warszawa 9 no. 9:307,308 S '64.

1. Department of Lifting and Conveying Machinery, Technical University, Gdansk.

WIERZCHOWSKI, Zygmunt (Gdansk)

Torsion of four-member straight-line booms. Archiw bud masz
11 no.3:563-579 '64.

WIERZEJEWSKI, Edmund, inż.

Explosions in the crankchamber of compression-ignition combustion engines. Biul techn Cegielski 6 Special issue:38-41 '62.

WIERZEJEWSKI, Edmund, inz.

Wear and prevention of wear of cylinder sleeves during the
combustion of heavy oils in ship engines. Biul techn Gugiolski
5:102-104 Special issue '61.

WIERZEJSKA-SKWARSKA, Krystyna

On the problem of pigmented naevi of the cornea, Klin. oczna 32 no.2:
131-136 '62.

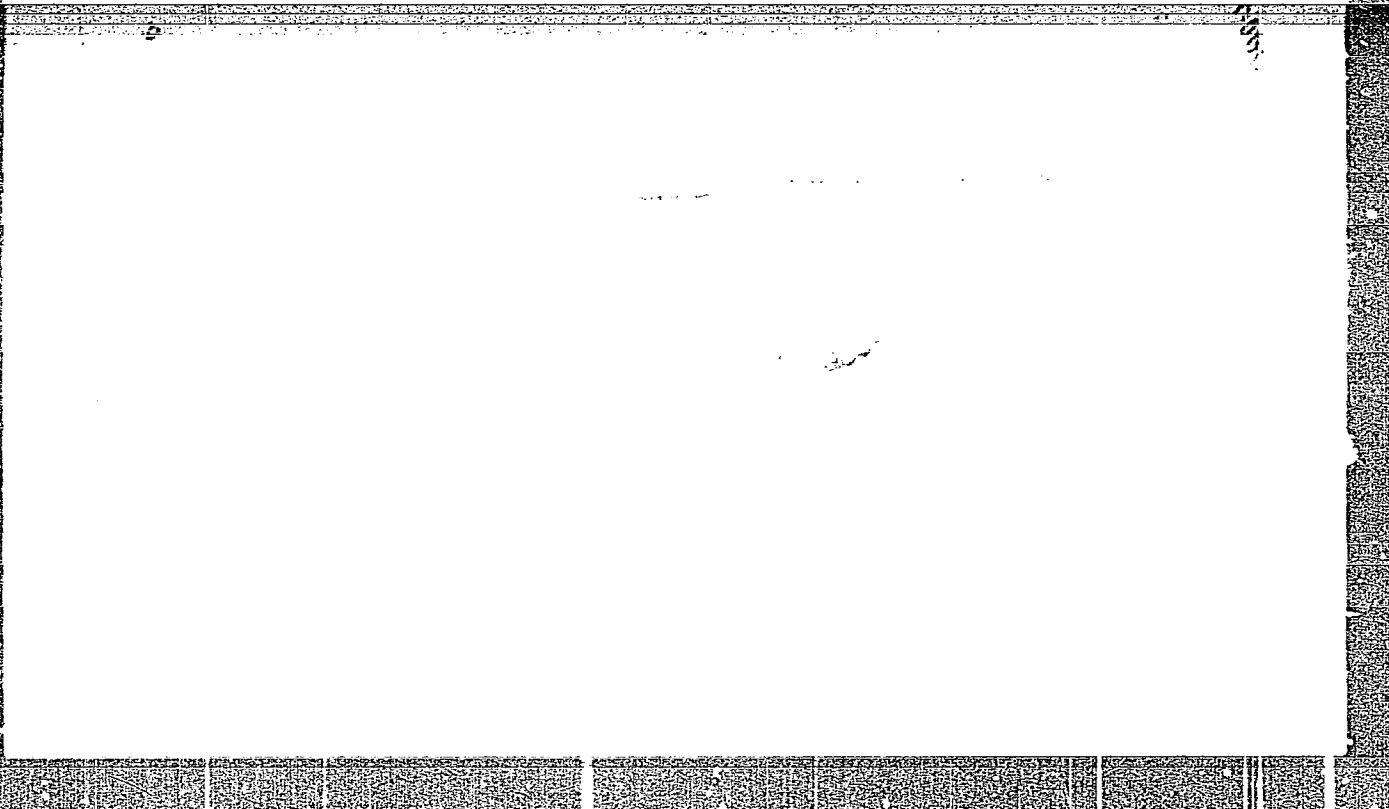
1. Z Kliniki Okulistycznej AM w Lublinie Kierownik: prof. dr med.
T. Krawicz.

(NEVUS PIGMENTED case reports)
(CORNEA neoplasms)

WISNIEJSKI, Witold

Design and measurements of homogenous helical delay lines. Rozpr
elektrotech 10 no.1/2:181-206 '64

1. Department of Electronic Systems, Technical University, Warsaw.



WIERZEJSKA, Hanna

Case of early complications of the second stage of diabetes. *Pediat.*
polska 34 no.3:318-322 Mar 59.

1. Z Kliniki Chorob Wewnętrznych Instytutu Matki i Dziecka w War-
szawie Dyrektor Instytutu: prof. dr med. Fr. Groer Kierownik Kliniki:
doc. dr med. J. Raszek. Adres: Warszawa, ul. Kasprzaka 17 Instytut
Matki i Dziecka.

(DIABETES MELLITUS, in inf. & child,
compl. (Pol))

SWIDERSKI, J.; OBODOSSKA-ZYSK, W.; WIERZEJSKA, H.

A case of Morgagni-Adams-Stokes syndrome in a girl with complete
auriculoventricular block. *Pediat.polska* 35 no.11:1349-1356
N '60.

1. Z Zakładu Fizjopatologii, Kierownik: doc. dr med. A.Chroscicki
i z Kliniki Chorob Wewnętrznych, Kierownik: prof. dr med. J.Raszek
Instytutu Matki i Dziecka w Warszawie, Dyrektor: prof. dr med. .
F.Groer i z Oddziału Obserwacyjnego Szpitala Miejskiego Zakaznego
nr 1 w Warszawie, Ordynator: doc. dr med. B.Migdalska-Kassurowa.
(HEART BLOCK in inf & child)

KOHLE, Jerzy, mgr inz.; WIERZEJSKI, Ryszard, mgr inz.;
ROSSMAN, Jan, dr inz.

Pressure of the Carpathian Flysch on drift laggings.
Gosp wodna 24 no. 1: 8-11 Ja '64.

1. Biuro Projektow Inzynieryjno-Komunikacyjnych
"Metroprojekt," Warszawa (for Kohle and Wierzejski).
2. Politechnika, Warszawa (for Rossman).

HELSZTYNSKI, Jerzy; WIERZEJSKI, Witold

The nanosecond synchroscope. Zesz probl nauki Pol 25:232-238
'63.

1. Institute of Basic Telecommunication Problems, Technical
Univeristy, Warsaw.

PROCESSES AND PROPERTIES INDEX

11-4

Metabolism of sugars injected intravenously at a constant rate. VI. Influence of hormones of inanition, and of alimentary factors on the assimilation of galactose and glucose. M. WINKLICHOWSKI (Acta Biol. Exp. Warsaw, 1931, 6, 331-331).—Aq. galactose or glucose (was injected intravenously into dogs at a rate of 2 g. per kg. per hr., under various conditions. Urinary and blood-galactose at first rise, and then remain at a constant level. Adrenaline and thyroxine have no influence on assimilation or excretion of galactose; whilst insulin produces a feeble but distinct anti-galactemic and galactosuric effect. In the case of glucose, the urinary and blood-glucose curves exhibit an initial rise, a more or less prolonged summit, and a final decline to a constant level; the time required for the attainment of equilibrium is prolonged by previous inanition, but varies considerably with different individuals, from 7 to 30 hr. Insulin accelerates assimilation only during the period of rising glycosuria of the first phase, at the summit of which it is without action; the duration of max. glycosuria is, however, prolonged. Adrenaline intensifies glycosuria, which may attain a val. of 100% of glucose injected during the period of max. glycosuria. The inability of the organism to assimilate glucose during the first phase is less marked in the case of dogs on a fat diet than with fasting dogs, and is still less so in protein-fed animals; it is unaffected by previous muscular work. Insulin and adrenaline act similarly under these conditions as in the case of fasting dogs. Carbohydrate feeding (starch or sucrose) reduces the duration and intensity of the hypoglycemia characteristic of the first phase; the initial rise is completely absent if glucose is injected at the height of digestion of a starch meal. It is concluded that the initial max. glycosuria may be due to augmented suprarenal secretion excited by injection of glucose. R. TRUNKOWSKI.

ASH. S.L.A. METALLURGICAL LITERATURE CLASSIFICATION

FROM DIVISION

TRUNKOWSKI

WINKLICHOWSKI

11-4

PUBLISHED AND PROPRIETARY INFORMATION

114

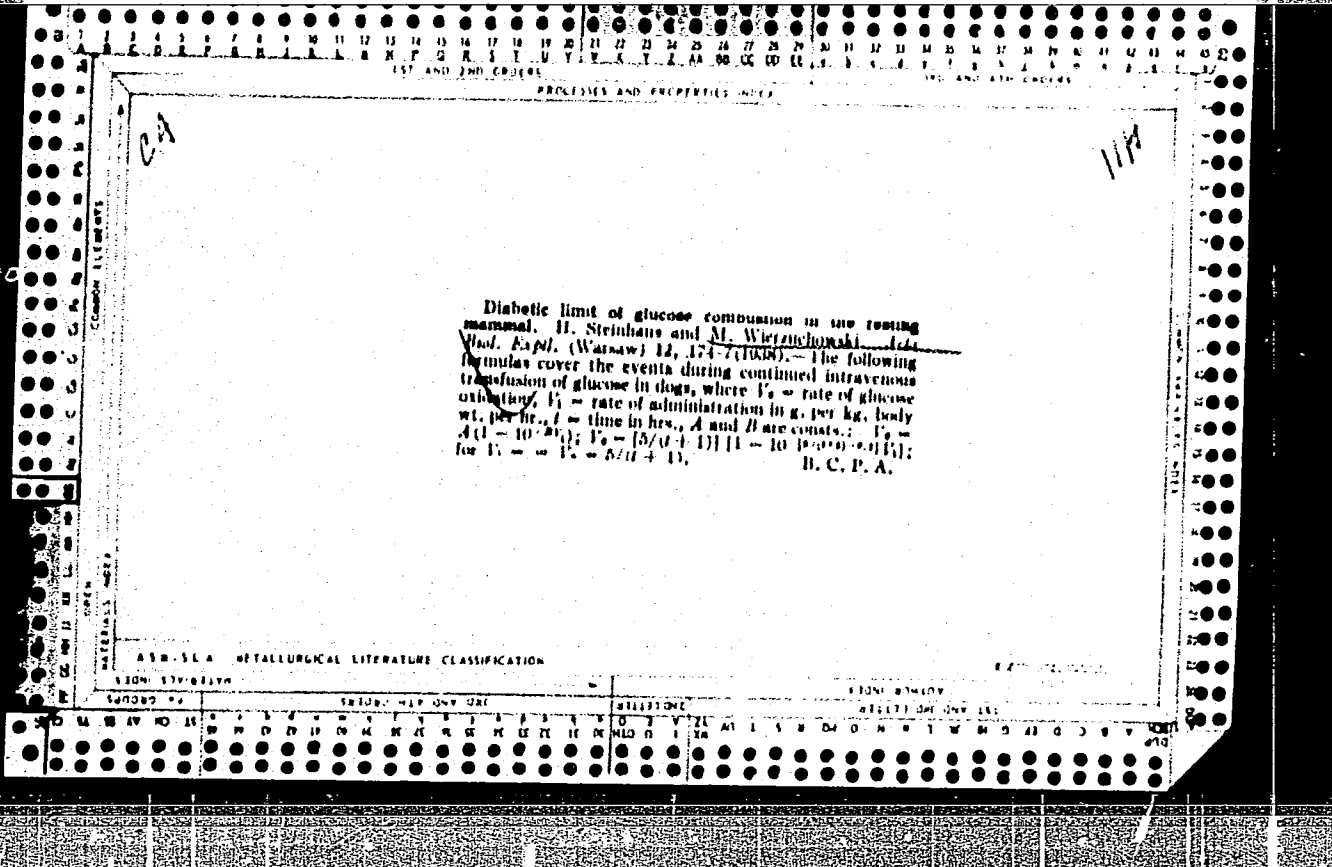
2A

Differentiation of the forms of glucose intoxication. M. Wieruchowski and Z. Borkowski. *Acta Biol. Exptl. (Warsaw)* 12, 168-73 (1938); cf. *C. A.* 32, 7976.—Glucose in 20% soln. was transfused intravenously into dogs under amytal anesthesia at the rate of 7 g. per kg. body wt. per hr. The fluid retained amounted to 5% of the body wt. at death. If the anesthesia was deep enough, no convulsions appeared. Death occurred from respiratory arrest at a blood-sugar level of 4-5 g. %. Ninety g. of sugar is excreted in the urine per sq. m. body surface per hr. Edema of various abdominal organs, effusions into the serous cavities, signs of acute kidney damage, and increased cerebrospinal fluid vol. were observed. If the animals worked a treadmill 11 g. of glucose per kg. body wt. per hr. was transfused. Convulsions appeared at a blood-sugar level of 2.5 g. %; death occurred at 2.72 g. %.

B. C. P. A.

METALLURGICAL LITERATURE CLASSIFICATION

13047 13048 13049 13050 13051 13052 13053 13054 13055 13056 13057 13058 13059 13060 13061 13062 13063 13064 13065 13066 13067 13068 13069 13070 13071 13072 13073 13074 13075 13076 13077 13078 13079 13080 13081 13082 13083 13084 13085 13086 13087 13088 13089 13090 13091 13092 13093 13094 13095 13096 13097 13098 13099 13100 13101 13102 13103 13104 13105 13106 13107 13108 13109 13110 13111 13112 13113 13114 13115 13116 13117 13118 13119 13120 13121 13122 13123 13124 13125 13126 13127 13128 13129 13130 13131 13132 13133 13134 13135 13136 13137 13138 13139 13140 13141 13142 13143 13144 13145 13146 13147 13148 13149 13150 13151 13152 13153 13154 13155 13156 13157 13158 13159 13160 13161 13162 13163 13164 13165 13166 13167 13168 13169 13170 13171 13172 13173 13174 13175 13176 13177 13178 13179 13180 13181 13182 13183 13184 13185 13186 13187 13188 13189 13190 13191 13192 13193 13194 13195 13196 13197 13198 13199 13200 13201 13202 13203 13204 13205 13206 13207 13208 13209 13210 13211 13212 13213 13214 13215 13216 13217 13218 13219 13220 13221 13222 13223 13224 13225 13226 13227 13228 13229 13230 13231 13232 13233 13234 13235 13236 13237 13238 13239 13240 13241 13242 13243 13244 13245 13246 13247 13248 13249 13250 13251 13252 13253 13254 13255 13256 13257 13258 13259 13260 13261 13262 13263 13264 13265 13266 13267 13268 13269 13270 13271 13272 13273 13274 13275 13276 13277 13278 13279 13280 13281 13282 13283 13284 13285 13286 13287 13288 13289 13290 13291 13292 13293 13294 13295 13296 13297 13298 13299 13300 13301 13302 13303 13304 13305 13306 13307 13308 13309 13310 13311 13312 13313 13314 13315 13316 13317 13318 13319 13320 13321 13322 13323 13324 13325 13326 13327 13328 13329 13330 13331 13332 13333 13334 13335 13336 13337 13338 13339 13340 13341 13342 13343 13344 13345 13346 13347 13348 13349 13350 13351 13352 13353 13354 13355 13356 13357 13358 13359 13360 13361 13362 13363 13364 13365 13366 13367 13368 13369 13370 13371 13372 13373 13374 13375 13376 13377 13378 13379 13380 13381 13382 13383 13384 13385 13386 13387 13388 13389 13390 13391 13392 13393 13394 13395 13396 13397 13398 13399 13400 13401 13402 13403 13404 13405 13406 13407 13408 13409 13410 13411 13412 13413 13414 13415 13416 13417 13418 13419 13420 13421 13422 13423 13424 13425 13426 13427 13428 13429 13430 13431 13432 13433 13434 13435 13436 13437 13438 13439 13440 13441 13442 13443 13444 13445 13446 13447 13448 13449 13450 13451 13452 13453 13454 13455 13456 13457 13458 13459 13460 13461 13462 13463 13464 13465 13466 13467 13468 13469 13470 13471 13472 13473 13474 13475 13476 13477 13478 13479 13480 13481 13482 13483 13484 13485 13486 13487 13488 13489 13490 13491 13492 13493 13494 13495 13496 13497 13498 13499 13500 13501 13502 13503 13504 13505 13506 13507 13508 13509 13510 13511 13512 13513 13514 13515 13516 13517 13518 13519 13520 13521 13522 13523 13524 13525 13526 13527 13528 13529 13530 13531 13532 13533 13534 13535 13536 13537 13538 13539 13540 13541 13542 13543 13544 13545 13546 13547 13548 13549 13550 13551 13552 13553 13554 13555 13556 13557 13558 13559 13560 13561 13562 13563 13564 13565 13566 13567 13568 13569 13570 13571 13572 13573 13574 13575 13576 13577 13578 13579 13580 13581 13582 13583 13584 13585 13586 13587 13588 13589 13590 13591 13592 13593 13594 13595 13596 13597 13598 13599 13600 13601 13602 13603 13604 13605 13606 13607 13608 13609 13610 13611 13612 13613 13614 13615 13616 13617 13618 13619 13620 13621 13622 13623 13624 13625 13626 13627 13628 13629 13630 13631 13632 13633 13634 13635 13636 13637 13638 13639 13640 13641 13642 13643 13644 13645 13646 13647 13648 13649 13650 13651 13652 13653 13654 13655 13656 13657 13658 13659 13660 13661 13662 13663 13664 13665 13666 13667 13668 13669 13670 13671 13672 13673 13674 13675 13676 13677 13678 13679 13680 13681 13682 13683 13684 13685 13686 13687 13688 13689 13690 13691 13692 13693 13694 13695 13696 13697 13698 13699 13700 13701 13702 13703 13704 13705 13706 13707 13708 13709 13710 13711 13712 13713 13714 13715 13716 13717 13718 13719 13720 13721 13722 13723 13724 13725 13726 13727 13728 13729 13730 13731 13732 13733 13734 13735 13736 13737 13738 13739 13740 13741 13742 13743 13744 13745 13746 13747 13748 13749 13750 13751 13752 13753 13754 13755 13756 13757 13758 13759 13760 13761 13762 13763 13764 13765 13766 13767 13768 13769 13770 13771 13772 13773 13774 13775 13776 13777 13778 13779 13780 13781 13782 13783 13784 13785 13786 13787 13788 13789 13790 13791 13792 13793 13794 13795 13796 13797 13798 13799 13800 13801 13802 13803 13804 13805 13806 13807 13808 13809 13810 13811 13812 13813 13814 13815 13816 13817 13818 13819 13820 13821 13822 13823 13824 13825 13826 13827 13828 13829 13830 13831 13832 13833 13834 13835 13836 13837 13838 13839 13840 13841 13842 13843 13844 13845 13846 13847 13848 13849 13850 13851 13852 13853 13854 13855 13856 13857 13858 13859 13860 13861 13862 13863 13864 13865 13866 13867 13868 13869 13870 13871 13872 13873 13874 13875 13876 13877 13878 13879 13880 13881 13882 13883 13884 13885 13886 13887 13888 13889 13890 13891 13892 13893 13894 13895 13896 13897 13898 13899 13900 13901 13902 13903 13904 13905 13906 13907 13908 13909 13910 13911 13912 13913 13914 13915 13916 13917 13918 13919 13920 13921 13922 13923 13924 13925 13926 13927 13928 13929 13930 13931 13932 13933 13934 13935 13936 13937 13938 13939 13940 13941 13942 13943 13944 13945 13946 13947 13948 13949 13950 13951 13952 13953 13954 13955 13956 13957 13958 13959 13960 13961 13962 13963 13964 13965 13966 13967 13968 13969 13970 13971 13972 13973 13974 13975 13976 13977 13978 13979 13980 13981 13982 13983 13984 13985 13986 13987 13988 13989 13990 13991 13992 13993 13994 13995 13996 13997 13998 13999 14000 14001 14002 14003 14004 14005 14006 14007 14008 14009 14010 14011 14012 14013 14014 14015 14016 14017 14018 14019 14020 14021 14022 14023 14024 14025 14026 14027 14028 14029 14030 14031 14032 14033 14034 14035 14036 14037 14038 14039 14040 14041 14042 14043 14044 14045 14046 14047 14048 14049 14050 14051 14052 14053 14054 14055 14056 14057 14058 14059 14060 14061 14062 14063 14064 14065 14066 14067 14068 14069 14070 14071 14072 14073 14074 14075 14076 14077 14078 14079 14080 14081 14082 14083 14084 14085 14086 14087 14088 14089 14090 14091 14092 14093 14094 14095 14096 14097 14098 14099 14100 14101 14102 14103 14104 14105 14106 14107 14108 14109 14110 14111 14112 14113 14114 14115 14116 14117 14118 14119 14120 14121 14122 14123 14124 14125 14126 14127 14128 14129 14130 14131 14132 14133 14134 14135 14136 14137 14138 14139 14140 14141 14142 14143 14144 14145 14146 14147 14148 14149 14150 14151 14152 14153 14154 14155 14156 14157 14158 14159 14160 14161 14162 14163 14164 14165 14166 14167 14168 14169 14170 14171 14172 14173 14174 14175 14176 14177 14178 14179 14180 14181 14182 14183 14184 14185 14186 14187 14188 14189 14190 14191 14192 14193 14194 14195 14196 14197 14198 14199 14200 14201 14202 14203 14204 14205 14206 14207 14208 14209 14210 14211 14212 14213 14214 14215 14216 14217 14218 14219 14220 14221 14222 14223 14224 14225 14226 14227 14228 14229 14230 14231 14232 14233 14234 14235 14236 14237 14238 14239 14240 14241 14242 14243 14244 14245 14246 14247 14248 14249 14250 14251 14252 14253 14254 14255 14256 14257 14258 14259 14260 14261 14262 14263 14264 14265 14266 14267 14268 14269 14270 14271 14272 14273 14274 14275 14276 14277 14278 14279 14280 14281 14282 14283 14284 14285 14286 14287 14288 14289 14290 14291 14292 14293 14294 14295 14296 14297 14298 14299 14300 14301 14302 14303 14304 14305 14306 14307 14308 14309 14310 14311 14312 14313 14314 14315 14316 14317 14318 14319 14320 14321 14322 14323 14324 14325 14326 14327 14328 14329 14330 14331 14332 14333 14334 14335 14336 14337 14338 14339 14340 14341 14342 14343 14344 14345 14346 14347 14348 14349 14350 14351 14352 14353 14354 14355 14356 14357 14358 14359 14360 14361 14362 14363 14364 14365 14366 14367 14368 14369 14370 14371 14372 14373 14374 14375 14376 14377 14378 14379 14380 14381 14382 14383 14384 14385 14386 14387 14388 14389 14390 14391 14392 14393 14394 14395 14396 14397 14398 14399 14400 14401 14402 14403 14404 14405 14406 14407 14408 14409 14410 14411 14412 14413 14414 14415 14416 14417 14418 14419 14420 14421 14422 14423 14424 14425 14426 14427 14428 14429 14430 14431 14432 14433 14434 14435 14436 14437 14438 14439 14440 14441 14442 14443 14444 14445 14446 14447 14448 14449 14450 14451 14452 14453 14454 14455 14456 14457 14458 14459 14460 14461 14462 14463 14464 14465 14466 14467 14468 14469 14470 14471 14472 14473 14474 14475 14476 14477 14478 14479 14480 14481 14482 14483 14484 14485 14486 14487 14488 14489 14490 14491 14492 14493 14494 14495 14496 14497 14498 14499 14500 14501 14502 14503 14504 14505 14506 14507 14508 14509 14510 14511 14512 14513 14514 14515 14516 14517 14518 14519 14520 14521 14522 14523 14524 14525 14526 14527 14528 14529 14530 14531 14532 14533 14534 14535 14536 14537 14538 14539 14540 14541 14542 14543 14544 14545 14546 14547 14548 14549 14550 14551 14552 14553 14554 14555 14556 14557 14558 14559 14560 14561 14562 14563 14564 14565 14566 14567 14568 14569 14570 14571 14572 14573 14574 14575 14576 14577 14578 14579 14580 14581 14582 14583 14584 14585 14586 14587 14588 14589 14590 14591 14592 14593 14594 14595 14596 14597 14598 14599 14600 14601 14602 14603 14604 14605 14606 14607 14608 14609 14610 14611 14612 14613 14614 14615 14616 14617 14618 14619 14620 14621 14622 14623 14624 14625 14626 14627 14628 14629 14630 14631 14632 14633 14634 14635 14636 14637 14638 14639 14640 14641 14642 14643 14644 14645 14646 14647 14648 14649 14650 14651 14652 14653 14654 14655 14656 14657 14658 14659 14660 14661 14662 14663 14664 14665 14666 14667 14668 14669 14670 14671 14672 14673 14674 14675 14676 14677 14678 14679 14680 14681 14682 14683 14684 14685 14686 14687 14688 14689 14690 14691 14692 14693 14694 14695 14696 14697 14698 14699 14700 14701 14702 14703 14704 14705 14706 14707 14708 14709 14710 14711 14712 14713 14714 14715 14716 14717 14718 14719 14720 14721 14722 14723 14724 14725 14726 14727 14728 14729 14730 14731 14732 14733 14734 14735 14736 14737 14738 14739 14740 14741 14742 14743 14744 14745 14746 14747 14748 14749 14750 14751 14752 14753 14754 14755 14756 14757 14758 14759 14760 14761 14762 14763 14764 14765 14766 14767 14768 14769 14770 14771 14772 14773 14774 14775 14776 14777 14778 14779 14780 14781 14782 14783 14784 14785 14786 14787 14788 14789 14790 14791 14792 14793 14794 14795 14796 14797 14798 14799 14800 14801 14802 14803 14804 14805 14806 14807 14808 14809 14810 14811 14812 14813 14814 14815 14816 14817 14818 14819 14820 14821 14822 14823 14824 14825 14826 14827 14828 14829 14830 14831 14832 14833 14834 14835 14836 14837 14838 14839 14840 14841 14842 14843 14844 14845 14846 14847 14848 14849 14850 14851 14852 14853 14854 14855 14856 14857 14858 14859 14860 14861 14862 14863 14864 14865 14866 14867 14868 14869 14870 14871 14872 14873 14874 14875 14876 14877 14878 14879 14880 14881 14882 14883 14884 14885 14886 14887 14888 14889 14890 14891 14892 14893 14894 14895 14896 14897 14898 14899 14900 14901 14902 14903 14904 14905 14906 14907 14908 14909 14910 14911 14912 14913 14914 14915 14916 14917 14918 14919 14920 14921 14922 14923 14924 14925 14926 14927 14928 14929 14930 14931 14932 14933 14934 14935 14936 14937 14938 14939 14940 14941 14942 14943 14944 14945 14946 14947 14948 14949 14950 14951 14952 14953 14954 14955 14956 14957 14958 14959 14960 14961 14962 14963 14964 14965 14966 14967 14968 14969 14970 14971 14972 14973 14974 14975 14976 14977 14978 14979 14980 14981 14982 14983 14984 14985 14986 14987 14988 14989 14990 14991 14992 14993 14994 14995 14996 14997 14998 14999 15000



1ST AND 2ND CODES 3RD AND 4TH CODES

PROCESSES AND PROPERTIES INDEX

ca

The influence of carbon dioxide gas on the carotid sinus which has been isolated from the circulation. M. Wieruchowski and Z. Blinski. *Acta Biol. Exptl.* (Warsaw) 13, 166-70(1939); *Chem. Zentr.* 1940, II, 3002; cf. C. A. 33, 6112', 6955'.--The carotid sinus of the dog was isolated from the circulation and perfused with gaseous CO₂. This treatment reduced the excitability of the pressor-sensory nerve fibers. The inhibition concerned the pressor-receptor reflexes of the circulation and respiration. The influence of high CO₂ pressures on the chemosensitive nerve fibers of the glomus caroticum produced a sharp acceleration and deepening of respiration even when the vasosympathetic depressors and other nerves of the carotid sinus were severed. The chemosensitive nerve fibers are very resistant to CO₂; they retained their excitability for about 10 min. under continuous exposure to the influence of CO₂. The pressor-sensory nerve fibers, on the other hand, lost their excitability very rapidly.

M. G. Moore

11 F

COMMON ELEMENTS

OPEN MATERIALS INDEX

ASB-55A METALLURGICAL LITERATURE CLASSIFICATION

FROM BOMBY

1ST AND 2ND LETTERS

3RD AND 4TH LETTERS

5TH LETTER

6TH LETTER

7TH LETTER

8TH LETTER

9TH LETTER

10TH LETTER

11TH LETTER

12TH LETTER

13TH LETTER

14TH LETTER

15TH LETTER

16TH LETTER

17TH LETTER

18TH LETTER

19TH LETTER

20TH LETTER

21ST LETTER

22ND LETTER

23RD LETTER

24TH LETTER

25TH LETTER

26TH LETTER

27TH LETTER

28TH LETTER

29TH LETTER

30TH LETTER

31ST LETTER

32ND LETTER

33RD LETTER

34TH LETTER

35TH LETTER

36TH LETTER

37TH LETTER

38TH LETTER

39TH LETTER

40TH LETTER

41ST LETTER

42ND LETTER

43RD LETTER

44TH LETTER

45TH LETTER

46TH LETTER

47TH LETTER

48TH LETTER

49TH LETTER

50TH LETTER

51ST LETTER

52ND LETTER

53RD LETTER

54TH LETTER

55TH LETTER

56TH LETTER

57TH LETTER

58TH LETTER

59TH LETTER

60TH LETTER

61ST LETTER

62ND LETTER

63RD LETTER

64TH LETTER

65TH LETTER

66TH LETTER

67TH LETTER

68TH LETTER

69TH LETTER

70TH LETTER

71ST LETTER

72ND LETTER

73RD LETTER

74TH LETTER

75TH LETTER

76TH LETTER

77TH LETTER

78TH LETTER

79TH LETTER

80TH LETTER

81ST LETTER

82ND LETTER

83RD LETTER

84TH LETTER

85TH LETTER

86TH LETTER

87TH LETTER

88TH LETTER

89TH LETTER

90TH LETTER

91ST LETTER

92ND LETTER

93RD LETTER

94TH LETTER

95TH LETTER

96TH LETTER

97TH LETTER

98TH LETTER

99TH LETTER

100TH LETTER

WIERZUCHOWSKI, M.
5907

Physiol. Inst. of the Med. Faculty, Univ. of Lodz Intravenous glucose trans-
formation during severe muscular exercise in normal dogs Proceedings of the Society
for Experimental Biology and Medicine 1948, 68/3 (549-550)

With an injection rate of 4 g./kg/hour glucose elimination by dogs performing
work becomes inappreciable towards the end of the experiment, whereas in resting
animals even with a rate of 2 g/kg/hour such an improvement of glucose utilization
is not achieved.

Gottschalk - Melbourne

SO: EXCERPTA MEDICA, Vol. II, No. 11, Sec. II, Nov. 1949

WIERZUCHOWSKI, M.

Research studies on the localization of antimetabolic action of
adrenalin in vivo. Acta physiol. polon. 3 Suppl. 3: 277-278 1952.
(GLML 24:1)

1. Lodz.

WIERZYCHOWSKI, M.

The inhibiting action of adrenalin on glucose metabolism at different
saccharification levels. Acta physiol. polon. 3 Suppl. 3: 279-281 1952.
(CML 24:1)

1. Lodz.

WIERZUCHOWSKI, M.

Chemical Abst.
Vol. 48 No. 8
Apr. 25, 1954
Biological Chemistry

Intravenous feeding. I. Glucose assimilation in dogs. M. Wierzuchowski (Zakład Fizjol. Akad. Med., Łódź). *Polish Akad. Umiejętności Rozprawy Wydziału Lekarsk.* 12, No. 8, 1-18(1952).—The rate of assimilation of glucose (I), given intravenously in various concns., was noted in normal female dogs. Dogs (av. surface area 0.511 m.²) given 0-20 g. I/m.²/hr. usually had an initial rise followed by a fall in blood I to the normal range. Dogs given 120-200 g. I/m.²/hr., in the 2nd and 3rd hr. of adn. had the highest blood I concns. (700-2000 mg.%) and rates of assimilation (82-85.5 g./m.²/hr.). After 3 hrs. of I feeding the I concns. in the blood and urine may have risen, but there was a decrease in the assimilation rate as noted by an increase of I in urine, a decrease in ventilation rate, O₂ consumption, CO₂ output, body temp., and lactic acid. 23 references. II. The effect of time and blood-glucose concentration on intravenously infused glucose. *Ibid.* No. 9, 1-22.—In normal dogs, during a continuous intravenous infusion of I the assimilation rate of I steadily rose as the blood I concn. rose up to 500-800 mg.% above normal. As higher concns. were reached (up to 2500 mg.%) the assimilation rates usually remained const. The highest assimilation rates were obtained in the first 3 hrs., then a levelling or a drop occurred after the third hr. while the blood I concn. rose. 35 references. III. Production of lactates at various assimilation levels of glucose. M. Wierzuchowski and T. Chmielewski. *Ibid.* 10, 1-17(1952).—As the concn. of I (given intravenously) rose in the blood (from 0 to 800-1300 mg.% above normal) the concn. of lactates in blood and urine rose proportionately (in blood from 0 to 20-35 mg.% above normal; in urine from 0 to 130-150 mg./m.²/hr.). Further increase in blood I concn. up to 2300 mg.% above normal caused no further rise in the concn. of blood and urine lactates. To obtain such high blood I concn. the rate of I infusion was 150 g. I/m.²/hr. 18 references. L. F.P.

WIERZUCHOWSKI, M.

Emotional behavior in various concentrations of glucose in the blood.
Acta physiol. polon. 4 no.3:199-206 1953. (CML 25:5)

WIERZUCHOWSKI, M.

Apparatus for intravenous transfusions for laboratories and clinics.
Polski tygod. lek. 8 no.26:925-927 29 June 1953. (CJML 25:1)

WIERZUCHOWSKI, M.

Double kinetic dependence between blood sugar concentration and rate of glucose intake. Acta physiol. polon. 8 no.3:563-565 1957.

(BLOOD SUGAR,

double kinetic dependence with glucose intake rate (Pol))

WIERZUCHOWSKI, M.

Hypersaturation of the nerve centers with glucose following application of osmotic stimulus. Acta physiol. polon. 8 no.3:565-567 1957.

(BRAIN, metabolism,

hypersaturation with glucose with osmotic stimulus in dogs (Pol))

(GLUCOSE,

hypersaturation of brain with osmotic stimulus in dogs (Pol))

WIERZUCHOWSKI, M.

Glucose load in dogs at rest and relation to body size. Acta
biochim.polon. 5 no.2:93-138 1958
(GLUCOSE TOLERANCE TEST,
eff. of body size & body weight on intravenous glucose
load in dog (Pol))

WIERZUCHOWSKI, M.

Heavy muscular exercise and the disappearance of blood sugar during priming with glucose.
p. 55.

ACTA BIOCHIMICA POLONICA. (Polska Akademia Nauk. Komitet Biochemiczny)
Warszawa. Vol. 6, no. 1, 1959

Poland/

Monthly List of East European Accessions Index (EEAI), LC, Vol. 8, no. 6, June 1959

Uncl.

[POLAND]

WIERZBIKOWSKI, M., S. GOSCHLEWSKI, B. LESNIAK, Z. WYCHOWA-
WONA and Z. WOJAS; Institute of Physiology (Zaklad Fizjolo-
gii), PAN [Polska Akademia Nauk -- Polish Academy of Scien-
ces], Lodz.

"Pancreas in Immediate Regulation of Blood Volume During
Hypercapnality."

Warsaw, Bulletin de l'Academie Polonaise des Sciences:
Serie des Sciences Biologiques, Vol. X, 1968,
1968, no 559-563.

Abstract: [English article] Report on an experiment made
on dogs to investigate the role of the pancreas in the
immediate regulation of blood volume during hypercapnality.
The experiment is part of a series of studies on the
phenomena of the primary period of glucose infusion. 5
illustrations, 1 diagram; 9 references, mostly Polish.

1/1

WIERZUCHOWSKI, M.; LESNIAK, H.; GOGOLEWSKI, S.; WOJAS, Z.; SZYCHOWSKI, W.
WYCZOLKOWSKA, J.

Early and late edema of pancreas during glucose hyperosmolality.
Bul Ac Pol biol 11 no.2:99-103 '63.

1. Institute of Physiology, Lodz, Polish Academy of Sciences.

WIERZUCHOWSKI, Mieczysław

Quantitative glycemometry: a search for the glucose-saturation point in the dog at rest. Acta physiol. pol., 14 no.1:1-27 '63.

1. Z Zakładu Fizjologii PAN w Łodzi Kierownik: prof. dr
M. Wierzuchowski.

(DOGS) (REST)

WIERZUCHOWSKI, Mieczyslaw

The rest integrated glycemionetry and its relation to osmotic diuresis. Acta physiol. Pol. 15 no.4:457-475 J1-Ag '64

1. Z Zakladu Fizjologii Polskiej Akademii Nauk w Lodzi
(Kierownik prof. dr. M. Wierzuchowski).

WIERZUCHOWSKI, Mieczyslaw

Heavy muscular work during intravenous glucose infusion at various
rate. Acta physiol. Pol. 15 no.6:729-758 N-D '64

1. Z Zakladu Fizjologii Polskiej Akademii Nauk w Lodzi (kie-
rownik: prof. dr. M. Wierzuchowski).