

## INTRODUCTION

The following pages include a schedule of my activities at SRI, a report on each of those seven activities, and an extensive analysis of the second remote viewing. Each of those sections stands alone, and a summary assessment is best obtained by reading each of the critiques, since they indicate not only my criticisms but the steps taken to counter them.

By way of additional comment, my impressions were favorable with regard to the SRI effort, the existence and hardness of the phenomena involved, Hella's credibility and capability, and my own performance. Although this is a subjective assessment of my own performance, I have tried to restrain my amazement and excitement over the results. In particular, since this is written weeks after the events, I have attempted to not give myself benefit of the doubt when relying on memory. Very likely the SRI report of my activities will be less restrained. Also, the results need be viewed in the context of a number of isolated events occurring over a short period of time, without precedent in my experiences.

An additional subjective assessment of operational utility for these phenomena is being completed, but is not part of this historical report.

SCHEDULE

Wednesday

1: 30 A.M. arrive motel  
9: 30 A.M. arrive SRI, tour and meetings  
10: 00 RV #1 and its debriefing  
12: 00 lunch and review of Nature paper critiques  
1: 00 met Hella Hammid, observed her performance at Stanford chapel.  
3: 00 witnessed critique of Hella's performance  
4: 30 discussions with Targ and Puthoff regarding schedule for the next days, obtained further background reading on Remote Viewing and Ryzl's paper on redundant coding  
7: 30 dinner meeting including Puthoff and [REDACTED] off-site. Followed by discussion with [REDACTED] regarding handling of Hella's data and my further activities.

SG11

SG11

Thursday

10: 00 RV #2 and its debriefing  
1: 00 select target, Hella's RV and its critique  
3: 00 Hella leaves, further discussion of her results  
4: 00 Obtain tape of Hella performing an RV on scientific apparatus, to try repeating the drill press experiment.  
4: 15 make several runs on the ESP teaching machine, using various techniques  
6: 30 listen to Hella's RV tape, identify keywords; read coding theory papers.

Friday

9: 30 obtain Hella's drawings from the RV and again listen to tape  
10: 00 debriefing on my performance  
11: 00 RV #3 and debriefing  
2: 00 abacus experiment  
2: 20 teaching machine experiment  
4: 00 correct RV #2 transcript, obtain copies of drawings and photos  
6: 00 total debriefing: my results, my criticisms, expected follow-on, alternative funding sources, what my trip accomplished, outlook for operational utility  
10: 00 flight out

RV #1

Mood

The first experiment utilizing me as subject was run immediately upon my arrival at the SRI lab. The standard mood adjective assessment was not done in this case or on the subsequent days for lack of time and because I was already noting my experiences in detail. At this time I was very tired and suffering from a bad head cold, and so was certain no one could expect a good performance from me. As a result, I was completely relaxed. Puthoff and Targ seemed anxious to run such an experiment at once as a way of calibrating me, and defining our schedule for the three days.

Protocol

Hal Puthoff obtained a standard target site from the office safe, under their usual protocol, and proceeded to the place. I remained in the experiment room with Russell Targ, discussing a variety of topics. At the agreed time, I turned on the tape recorder and described the images that came to mind. At various points, Russell encouraged me to talk in further detail. I drew no pictures. Another tape was made when Hal returned and I was debriefed.

Data

Transcripts of these tapes were not completed before I left and so are not contained here. They will be included in SRI's report on my visit. From my notes, key points in my description were:

Hal is shuffling about an area that is 50 feet from parked cars. The area has a geometrical shape (not round) which he has decided to stay inside, although it is not a physical constraint in the sense that he can get out of the area if he wants. There is a railing more than waist high. He is looking both out and down. There is movement, in the sense of a breeze, past him. He walks back to our room.

When Hal returned and asked how it went, I began to confess that I had avoided describing my initial impressions. At that point he turned on a second tape recorder, and I continued with a description of Hal standing on a wooden dock with rippling water going past him. There were two reasons why I had not described these feelings: first, the image seemed too much like my own apartment dock and I thought I was just remembering it. Second, I had driven around SRI's periphery in locating the lab, and was certain there was no water around. Since I wanted to do well, I had not mentioned those impressions, although I later realized that I wanted them on tape for completeness of the documentation.

### Subjective Assessment

The impressions came easily to mind. It was like daydreaming except I had Russ as director, and the impressions had to be translated into words and pictures with conscious effort. As a result, I was reluctant to talk. I did not expect that I had done well. I was, however, surprised that I had been able to really clear my mind, and had then gotten a consistent set of impressions for 15-20 minutes. Also in the past experiments I had reviewed, there seemed to be no impressions of time or motion (as well as no sounds) and so I had not expected to receive such impressions when following that protocol.

### Analysis of Results

Hal became obviously either pleased or amused at listening to my tape during debriefing. I was too impatient to make any drawings and so we proceeded to revisit the target site. My initially suppressed description was very accurate, as were my other statements. From my impressions I could have identified the actual target location, which was a bridge across a man-made brook on the SRI grounds. I was extremely surprised by that, and later analyzed the proceedings for possible explanation.

### Critique

It was frustrating to attempt a 15-20 minute session, as my mind started to wander.

The questioning sometimes was distracting. The process I was performing seemed to involve getting an impression, then searching for a word or image to match - sometimes an entire experience would result from the search. The process was analogous to smelling something, which may recall the name of a fragrance, or may recall an entire event complete with sounds and emotional memories. Sometimes the questions would get me off on such a side track.

I questioned how I could be certain the site was not manufactured after-the-fact either by monitoring my description as I made it or during debriefing. Either Hal's cleverness or computer assistance could then select a site similar to my description. There were three retorts to this:

- 1) Originally, the outbound experimenter did tape his movements and destination. This procedure was later dropped since it did not seem to add to the analysis, but merely generated more tapes to be catalogued.

2) The high strangeness of the sites would make it difficult to manufacture such places within the required range, if any specific description were given. Due to my unfamiliarity with the area, I could not effectively counter their challenge to match my total description to any other site within 15 minutes from SRI. However, I did attempt to construct such a site near my D.C. office and could not. If some of the details were ignored it became possible.

3) We decided that we would tape a complete record of the outbound experimenter's journey and activities at the site, both to eliminate such a possibility of manufacture after the fact; and to provide time calibration data for my impressions of body movement, posture, and intent. Unfortunately, this was not done until the third experiment.

Much discussion has been made concerning the "symbolism" used by RV subjects. This term carries incorrect connotations, referring to a purposeful obscuring of details. Rather, the process which occurs is a pure translation from experience to words, which may necessitate analogy but not symbolism. By a discussion of symbolic content in the RV data, experimenters imply that the deep psychological make-up of a subject must be probed before his data can be assessed. That is not true.

With Hella at the Church

As described in the objective report, I accompanied Hella to the church primarily to observe her, although I did have a number of questions in mind regarding my own performance potential and possible interaction with her.

She did extremely well, as described elsewhere in this report and as attested to by a letter from the officer in charge. I will add here only a few of my own observations.

Hella's performance indicates the durability of the phenomenon involved. The environment was totally uncontrolled and the task was completely new to her, since it involved perception of past events, with no assistance from a "transmitting" experimenter.

The attending officer knew full details of the case, so that Hella could theoretically have gotten all the verifiable results from him via telepathy. She did add information regarding the suspect's description and identity which have yet to be verified.

The possibility that the entire event was staged for me is not worth consideration. Since I viewed official reports and video tapes at the Menlo Park police barracks, the staging would have required police co-operation.

Hella's results support the frequent assertion that subjects perform better on more difficult and important tasks, rather than when playing games.

In attempting to establish rapport with Hella, I directed some questioning of her. She in turn began asking me for my impressions and confirmation of hers. Since the entire proceedings were being taped, I backed off and said I wanted to walk around. However, we did briefly work together on the description of the victim, and I believe that was at least a psychological boost to her performance. (She directed the officer at one point to question me further since I seemed to be on to something, but I was able to avoid his further interest by describing aspects of the case that were completely wrong. He paid me no more attention, and I receive no notice in his further correspondence with SRI.)

I found it was possible to get a number of impressions myself as I walked about the church, although they were not as specific as Hella's. I do believe that a group discussion following independent observations would effectively integrate out some of the noise involved in such a process.

Hella is very much concerned with her performance. After the visit to the church, she several times cited statements she had made and the fact that no one had told her the data before hand. She was somewhat surprised at how well she had done, and joked about how much further she should go. She is attempting further efforts on the case, and it will be interesting to follow them.

RV #2

Mood

Of my three RV experiments, I talked most freely during this one, and a mood indicator would probably have shown me to be still excited over the events of the previous day. As a result, I talked more in this experiment, giving elaborate detail, and drew a set of pictures.

Protocol

The desire was to duplicate the standard protocol as performed the previous day. I made a number of mental adjustments: I would dictate everything that came to mind, I would concentrate on body movements, I would work on detail rather than overall impressions

Data

A completely checked and verified transcript of my tape is included in a later section, along with a detailed attempt at objective analysis. The RV occurred in three parts:

- 1) First, I attempted to predict the site at a time when I expected Hal was on his way there.
- 2) Second, at the agreed time I get an initial impression of shielding and then perception of geometrical forms.
- 3) Third, I then get an impression of a building interior, and continue to be involved with the building for the remainder of the experiment.

Subjective Assessment

1) At the time of my first attempt, Hal was in fact still waiting in Bart Cox's office for a site to be selected from the safe. He was leaning against a more than waist high counter which has a light wood top. My impression of him leaning against a light wood workbench of similar height, and my later statement that this is not a prediction but a viewing at the time, are both essentially correct. In addition, I correctly describe "papers and small items, no large equipment" on the counter top.



2) The second perception, at the actual start of the experiment later provided the most satisfying single piece of feedback of the entire trip. Initially, I describe a positive feeling of an absence of emissions, and guess that Hal is in the shielded room which I have not seen but know to exist. Soon after that statement, I get a sensation of moving triangles which I describe as looking through a prism or shooting a movie through a Kallidescope. In addition, I see Hal grinning and chuckling to himself. The scene then shifts inside a building.

At the time of this description, Hal was reportedly standing inside the left tower shown in Figure RV #2-1. Upon remembering that Pat Price had gotten a shielded sensation under the same conditions, he decided to move out, but first wanted to give me a good target in case I was getting an impression. Therefore, he looked up through the tower, and spun around.

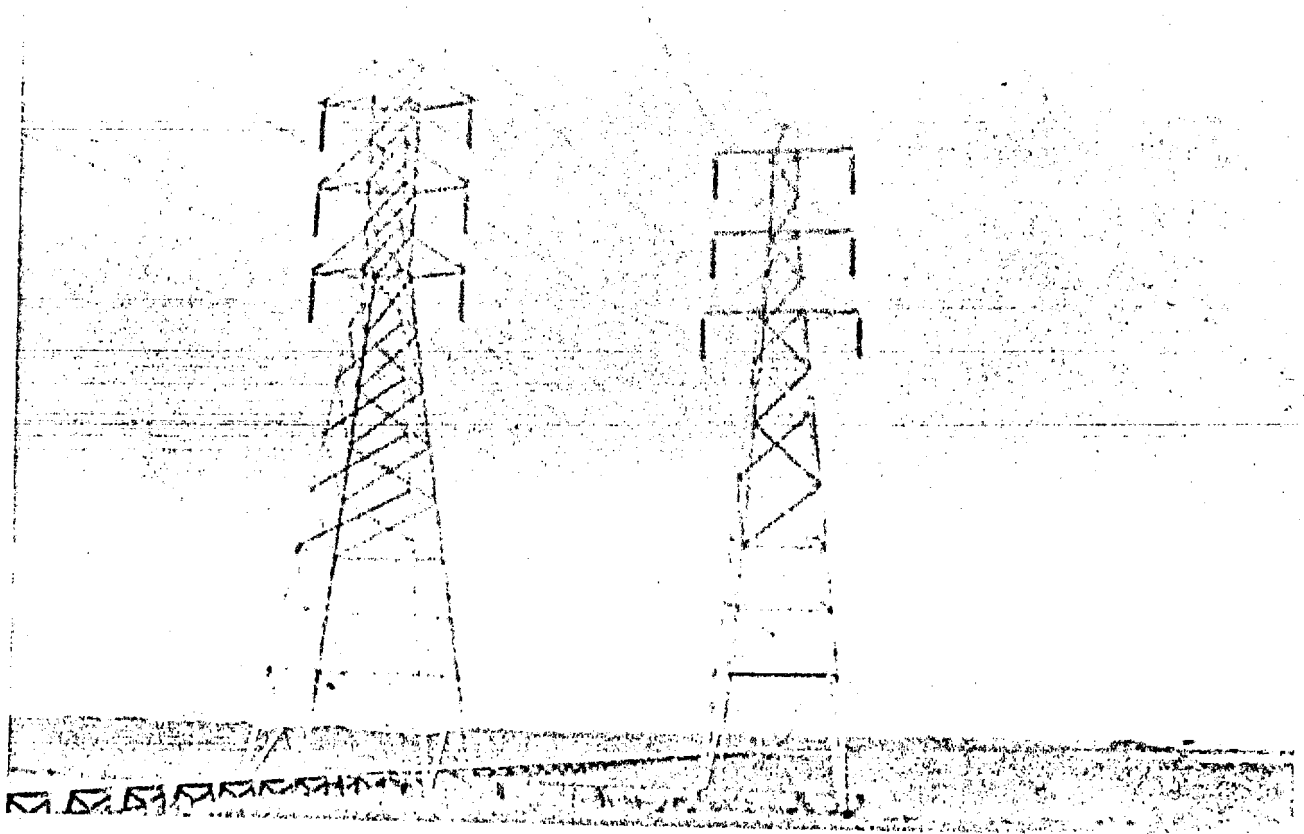
The weather was too wet for me to get any good pictures but, as SRI's photos should show, and as I verified for myself, my description gives a very good picture of the actual scenes.

3) For the remainder of the experiment I describe the interior of a building which is a museum and art gallery where movies are shown; a tourist type place for walking around which is not a business place. The architecture is busy, with the main room about 40 x 40.

It is not really a museum. Also, just before he leaves, Hal turns a complete circle and scans the whole place.

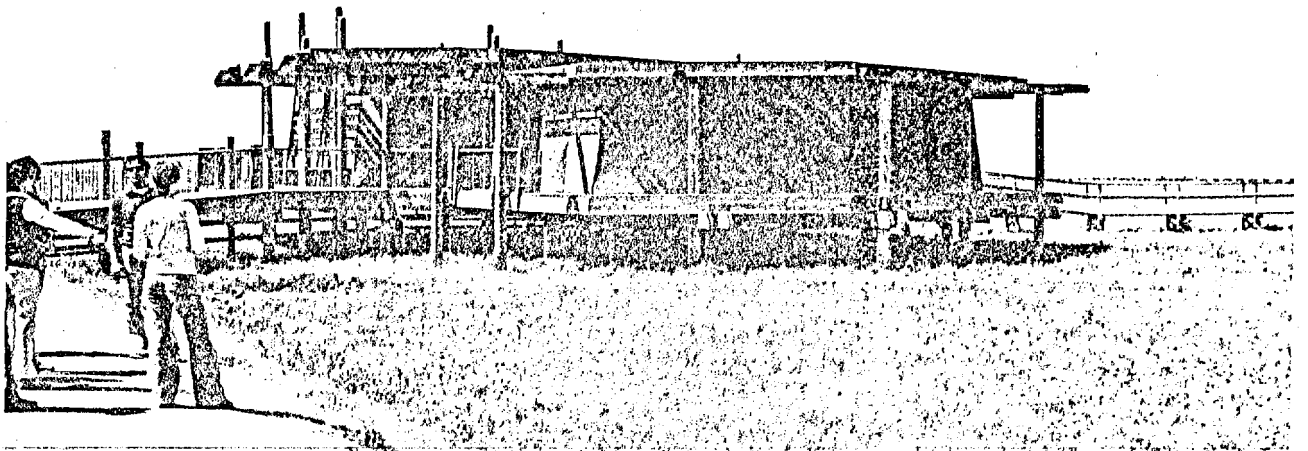
Those facts are all correct. The details of the description are a little better than 50% correct as later discussed.

I felt frustrated at my inability to achieve the precise overview I had expected remote viewing to entail. I was beginning to suspect that what I must really be doing was picking up unprocessed sensory data from Hal, along with his intentions and body posturing. However, in the third portion of the experiment, I am concerned with the interior of the building, while he remains outside. Either I am getting impressions from his unconscious memories of the interior, or I am merely using him as a beacon, in the true RV sense. Unfortunately, I do not have the ability to raise up and clearly see the entire site, but am restricted to more myopic views.



RV #2 - 1

RV #2 - 2



Analysis of Results

During debriefing, Hal was delighted with my Kallidescope description, as well as with the general content of the building description. I was particularly surprised by my impressions (correct) of absolute compass directions since I am characteristically poor at directions, and could not even figure out the heading of my own house.

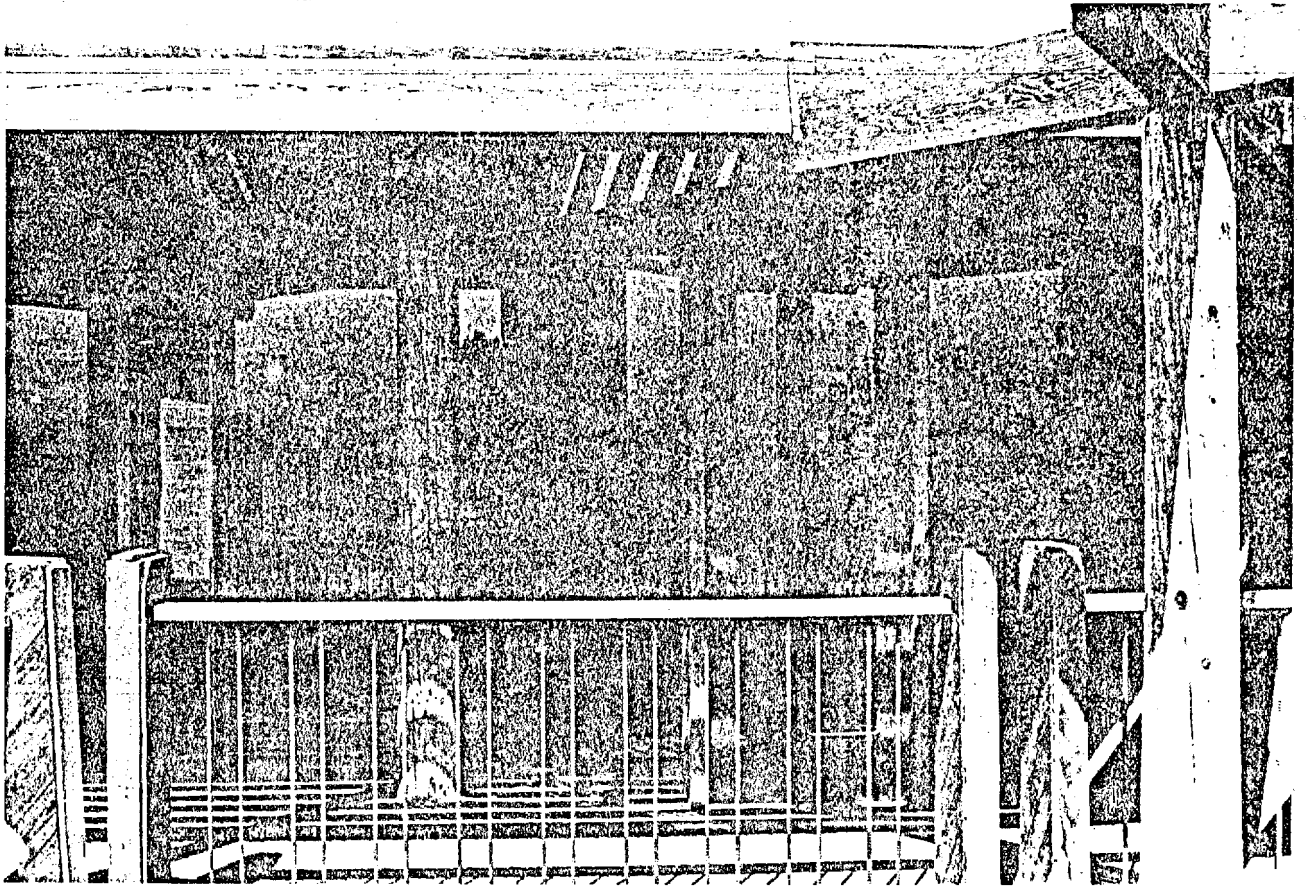
Critique

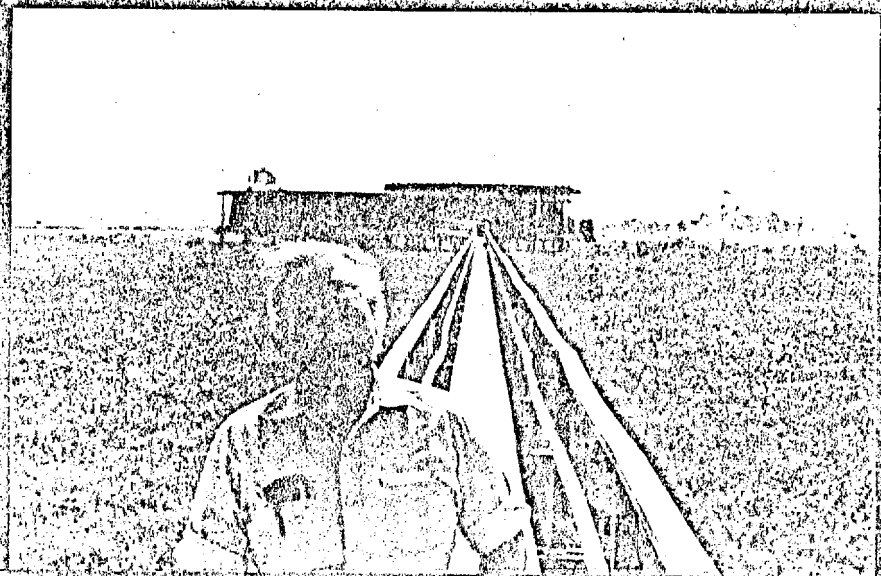
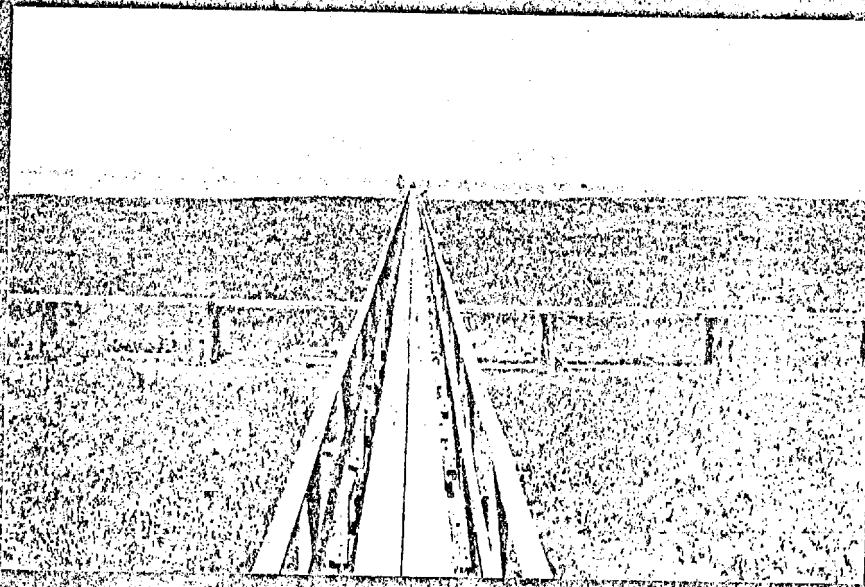
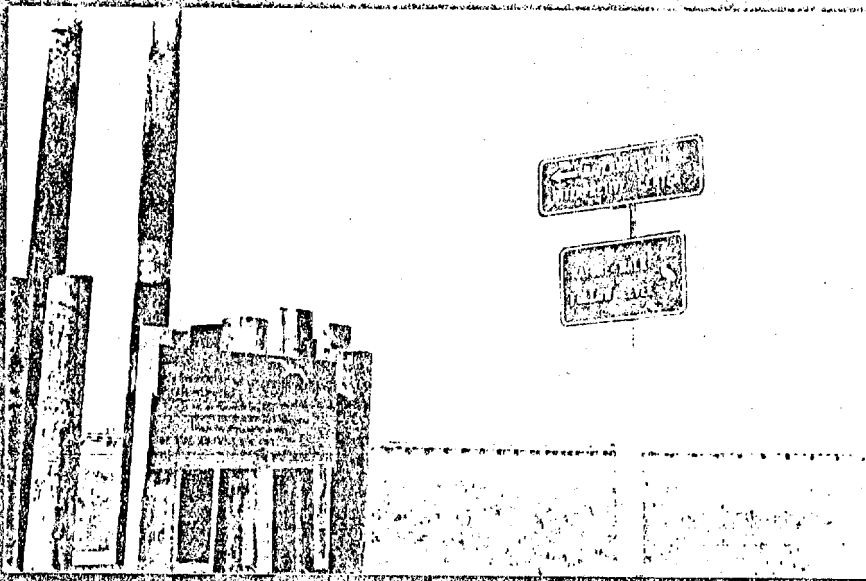
Although it would seem impossible to manufacture a site having both the Kallidescope and museum aspects, it is very unfortunate that no record was made of Hal's movements. At the time, we wished to duplicate the preceding day's protocol, and so did not wish to introduce the need for Hal to dictate all his moves and intentions into a recorder. (In retrospect, there was no sufficient reason for this decision. The shortness of my stay made us continually choose between replication of results and trials of new experiments.)

There were particularly bad effects in this instance from the interrogation procedure. In certain cases, the questions served to distract me by either drawing my attention to something else in my perception or to Hal's perceptions. In other cases, the questions were completely misleading, either in making wrong suppositions ("describe the room Hal is in" when he is outside), or asking for further detail on an incorrect point of description ("what color is the floor?" When what I have described is the outside area). I was not consciously able to distinguish between the perceptions that Hal was getting, and the remaining ones I got. Therefore, any question which directed me to go and get a specific piece of information might lead me to give conflicting descriptions.

Due to the effects stated above, it is additionally difficult to analyze information received under the interrogation process. My next RV would use no interrogator.

The question of personality dependance is now raised, since I wonder whether I can perform with Russell on the outbound end. In addition, the effect of multiple outbounders should be studied. Due to the lack of time, all of these changes are made in RV #3.





Abacus

Experiment

Two trials were made using the abacus clock which had previously been an RV target. As shown in the SRI reports, the apparatus has 5 rows of 10 beads each, plus a clock face with two hands, a slide indicating the date, and cutouts for exposing day of the week and month.

Hal Puthoff wanted to try perception of a binary message generated by moving all the beads in each row to the right or left. I selected positions from a random number table, and focused on the resulting bead positions while he attempted to visualize them in the next room. He got 3 out of the five bits, essentially chance results.

I preferred that he set up the entire apparatus, including movement of any number of beads in each row. I guessed that I could get the outline of the beads pattern.



The outline was the correct shape  
but in trying to come up with

corresponding digits, the sequence generated was 66689. If these are positioned left or right based on the outline shape, then three of the digits were correct. The small hand of the clock was correct, and the approximate position of the date slide indicator was close, although an incorrect number was assigned to it.

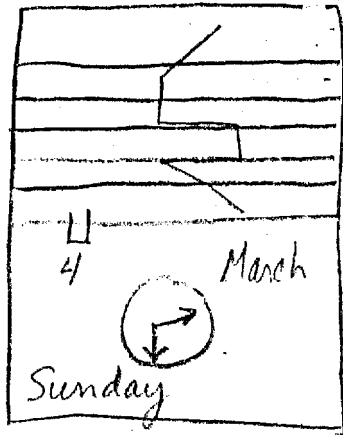
Results were not good enough to further consider at that time, but additional trials along with more familiarity with the apparatus are worth pursuing.

Critique

It is interesting that I predicted the type of Task I could do well.

This was the only coding-type experiment we had time to perform, although we had discussions involving a good design for a redundant coding experiment.

Both for training purposes and ease of analysis, more such short experiments should be emphasized.



(4) 6	✓
6 (4)	✓
6 (4)	x
8 (2)	x
(1) 9	✓
March	x (April)
21	✓
:30	x (:00)

Sunday	x (Saturday)
4th	x (11th)

<u>Guess</u>	<u>Result</u>
--------------	---------------

ABACUS

ESP Teaching Machine

In an attempt to demonstrate some degree of learning or improvement during my three days, I made three series of runs on the teaching machine which was designed by Russell Targ for NASA, and which is described in the SRI reports. Basically, it is a four-state machine, with the states generated randomly. Each run consists of 25 trials in which the subject selects one of 4 state buttons or the "pass" button. The machine can also be operated in two precognitive modes, during which the machine state is determined either 1/2 or 1 second after the operator selects his prediction of the state.

I tried a variety of approaches: right hand only, left hand only, both hands, the preceding three both with eyes open or shut. By shutting my eyes I was avoiding the visual feedback on my incorrect selections. Correct selections rang a bell. After 200 runs of each type, I appeared to do best by using both hands, eyes open, and proceeding very fast. I then performed 2000 such trials, and attained an average of about +15, for  $P \approx .10$ .

Generally, people get better as they practice more with the machine. On the following day, I repeated my run of 2000, and scored precisely at chance, although with possibly a significantly extra-chance variance. I've not yet received results of those calculations or computed them myself.

Later that same afternoon while both Hal and Russ were called to the phone, I went in to again run the machine, this time in an angry mood over my earlier results. I cleared the machine, and then punched out very deliberately 15 hits out of the 25 trials. It sounded as if the bell were ringing constantly. I ran for Russ and Hal to show them the result and then attempted to repeat it. After two trials below chance, I abandoned the machine again.

Although a run of 2000 trials took me less than two hours, I did not have a chance to make any further runs.



Interpretation of Hella's RV Tape

SG11

Before my trip to SRI, I had been reviewing Hella's performance on remote viewing of technical equipment. After hearing her description and seeing her drawings from the experiment with a CRT graphics terminal as target, I mentioned that I could possibly have guessed the actual equipment from her descriptions. [REDACTED] suggested I try to do that with another tape she had made, which was thought to be less good than the CRT results. After two runs through the tape, my guess of a vertical boring machine was close to the actual target of a drill press.

That result was considered significant, since it indicated that more information might be present in the data than had been supposed. Two factors seemed important to me: One, I was very familiar with both CRT's and vertical milling machines, and was currently working with both. Two, I had been briefed on Hella's background and personality. In particular, I knew that she was basically untechnically oriented, that she was capable of detailed description of anything she had seen, that she was not prone to fabricate details, and that she was employed in photography.

After having spent several hours with her at SRI, I expected that my familiarity with her RV performances had very much increased. My attempt to process another of her tapes, however, was not a success. In this case, the target was the ESP teaching machine, with which she was quite familiar. I had spent my first hour on it just before I left with her tape for the evening. My guess of a view graph projector was based on arbitrary selections from seemingly ambiguous and contradictory sets of statements. For instance, I was not certain if light were shining into or out of the box. Some of her terminology, such as "burning in" had specific meaning for me based on my background. I had to decide, in those cases, whether another meaning fit her background, or whether she had picked up the terminology along with the target.

Although it is probably helpful to have a calibration on the original subject (such as realizing that Hella's sizes are generally overestimated, and her drawings are often better than her descriptions), it does seem that familiarity of the interpreter with the possible target set is the crucial aspect of such an interpretation attempt. This may be considered analogous to giving raw intelligence data to an analyst who is well grounded in the pertinent fields.

Both from the standpoint of reliability assessment and information production, the analyst must know his field as well as his source.

Unfortunately, there was no chance to work along with Hella as she performed a technical RV experiment, due to time constraints.

RV #3

Mood

This experiment was not the first event of the day, as the other two RV's had been. In this case, I had just completed the interpretation run on Hella's RV of the teaching machine. I had been disappointed in my performance. However, my interest was peaked for this RV #3, since there were several protocol modifications I wished to try. In addition, this could be my last RV of the trip, so I wanted it to go well.

Protocol

Based on my observations during Hella's performances and during my own, I made a number of changes to the standard protocol. In each case, I believe the change resulted in stronger evidence for occurrence of paranormal phenomena, as well as demonstration that the phenomena are not fragile or protocol-dependent. From the suggestions contained in each section of this paper, the following changes were made for this run:

Both Russ and Hal went to the site, which was a standard target obtained from the safe.

No one remained with me; there was no interrogator.

All movements, intentions, and descriptions of the site were recorded by Russ and Hal from the time they left the building.

In addition, although I had not mentioned it beforehand; I moved around inside the room, moved outside of the inner room,

I taped all of my responses, but did not mention my movements on the tape.

Data

Transcript of my tape was not completed before I left and so is not contained here. Photographs of the target site are also still in preparation. The following data is from my notes and from memory. I drew no pictures at that time.

I spoke very little, relative to RV #2. The predominant feature was white arches, on a circular base. I felt I could distinguish the presence of both Hal and Russ. I tried concentrating on Russ, to check whether my results were dependent on Hal; and I got a clear impression of Russ sitting very low to the ground such that his knees were up by his ears, And at one point his head rested on his arms, which were folded across his knees. I did not like the place, and had an uneasy feeling about it. I mentioned the word "cupola" which came to mind, and stated that I didn't know what it meant. I had a particular sensation of looking down and attending to one point purposely, although the site could have been used as a vantage point.

### Subjective Assessment

The few images I did receive were very strong. However, the peripheral information just seemed blurred out. In particular, the body sensations of sitting, fixating on an area, and being uncomfortable were very strong. I was not particular pleased with my results, although I had ascertained that all my moving about during the experiment did not affect my perceptions.

### Analysis of Results

When Hal and Russ returned, my first statement was that I didn't like the place. I also mentioned my strange use of the word "cupola", and my image of Russ sitting down. At Hal's suggestion, I tried to draw my overall image, which was of white arches. He then directed me to draw the cupola, and also an overhead view. He was delighted with the results, and asked his secretary to guess what it was on our way out to the site. She did not know, but responded to his whispered answer by saying "oh, that's right!", which really pleased him.

We drove to the site, which was a park play ground, and Russ and Hal recreated their motions, which involved sitting on and spinning a merry go round composed of a disk with large white loops for holding on. Many screaming children were around, as is obvious from the tapes. I agreed that my images had been pretty good, but noticed that a maintenance building adjoining the merry go round area had a cupola on the roof (I had looked the word up in an illustrated dictionary just before leaving the office), and that it had a black lightning rod on top, and divisions just as my top view drawing showed. Hal and Russ both expressed dismay that the structure was there and that they had not noticed it. However, my feeling was that I had originally seen only the arches, and when directed by Russ to go back and draw the cupola, I had done just that by finding a cupola at the site. I'm certain I must have known

the word in the past sometime. My TOP VIEW drawing could be a good sketch of that cupola, while the other two are composite of the two features - arches and cupola.

At the site, Hal and Russ recreated their motions, which I later verified by listening to their tape. The sensations of focusing on a spot, looking down, and feeling uneasy were strongly verified by Russ, who had gotten quite dizzy during the experiment and had been eager for it to end.

We were all surprised that no strong perceptions of lots of people, lots of noise, or rapid movement ever came through.

### Critique

During debriefing, wording of the questions or instructions is critical.

Assessment of debriefing results must be done in the context of the interrogator's involvement.

Lack of an inquisitor during the experiment was no handicap, although I would generally produce less data when alone.

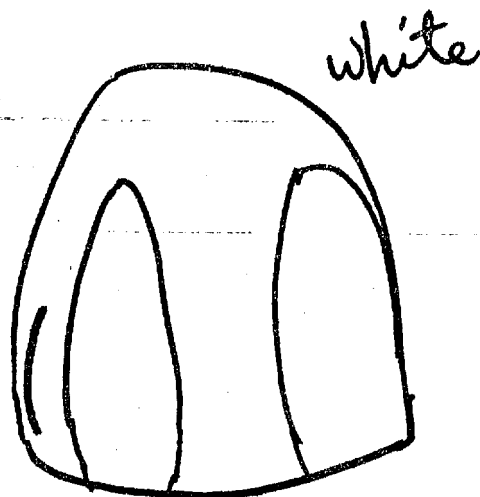
I was able to receive impressions of Russell, as well as of Hal.

Using two outbounders seemed to increase the strength of a few primary impressions, while washing out the rest. Part of that washout, however, may have been due to the saturation effects of so much noise and such rapid movement.

As in the previous experiments, my sensations of bodily movements or feelings were correct; although in this case there were several strong sensory inputs of that type which I failed to receive.

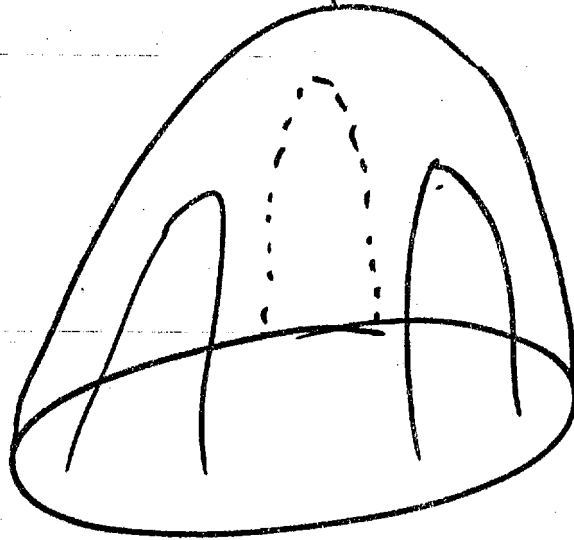
Taping by the outbounders was desirable in this case, since it verified my impressions, as well as indicating that the cupola was not an intentional part of their target activities.

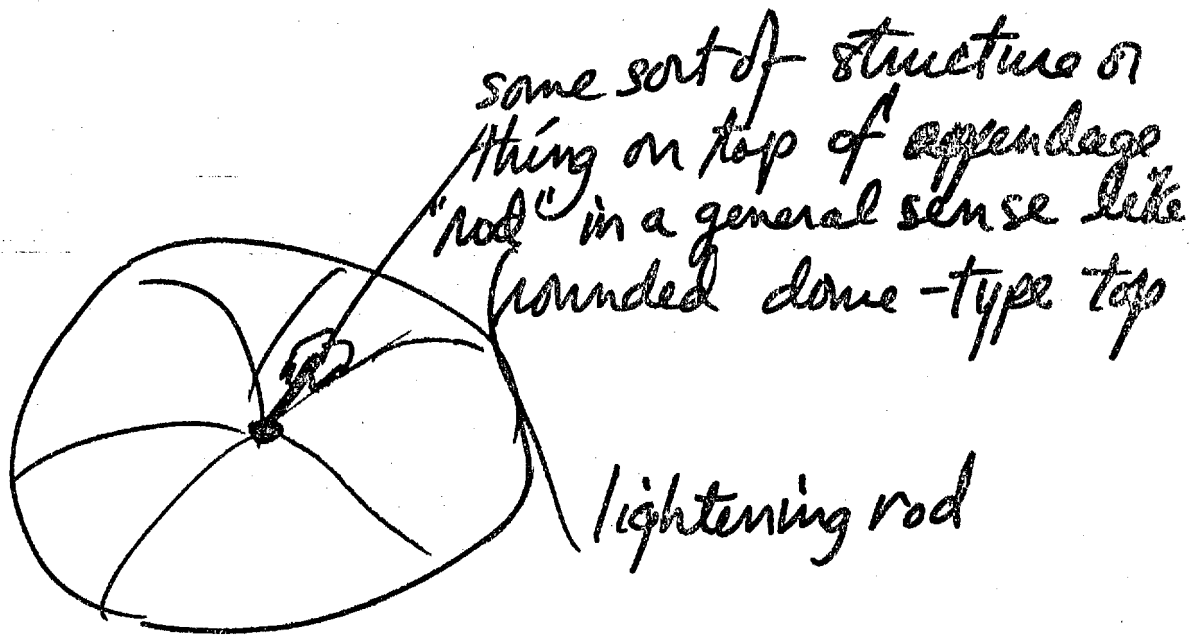
From my movements about and outside of the experiment room, I conclude that no subliminal suggestion techniques were being used on me.



*medium darkness thing*

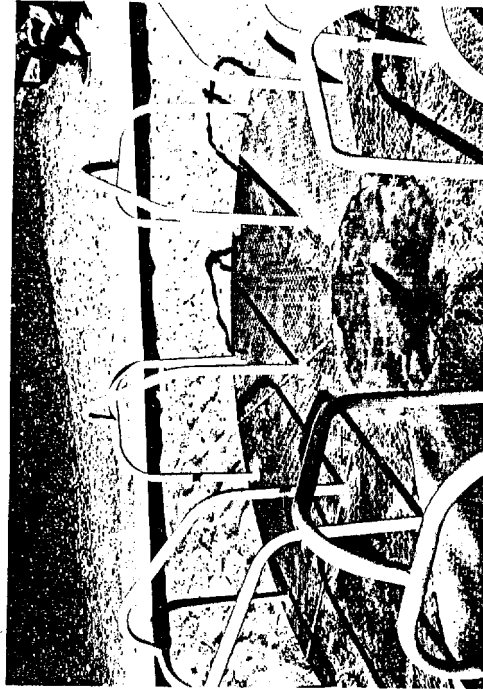
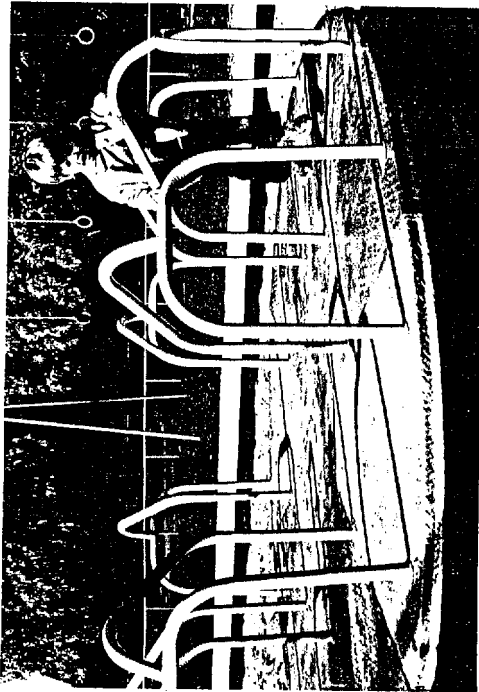
*rod black or brassy*



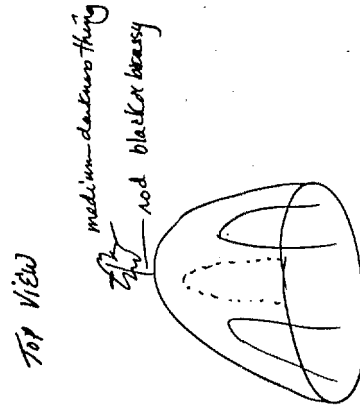
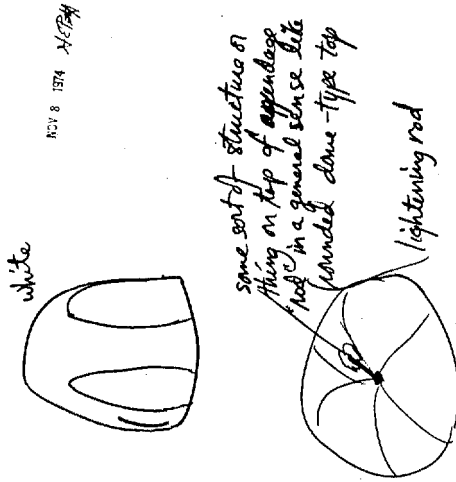


TOP VIEW





MERRY-GO-ROUND TARGET



RESPONSES OF VISITING SCIENTIST SUBJECT

SA-3183-17