

## INTRODUCTION

The trip to SRI was in support of CB's contract on enhancement of human perception. The purpose was to take an independent look at the SRI protocols, subjects, results and their analysis. In particular, I was to witness further demonstrations on the existence of an extra sensory information channel, to criticize the experimental protocols and analysis procedures, and to evaluate potential operational utility of the phenomena.

My applicable history includes a ten-year mild interest in paranormal phenomena, peaking slightly at times of various personal experiences. My education includes a Ph.D. in electrical engineering, with research in applications of computer science to bioengineering and experimental psychology.

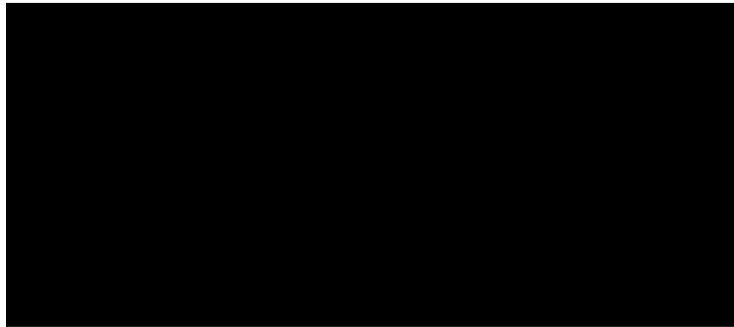
Before this trip, I had read the SRI progress reports and had briefly met with Hal Puthoff. Although the existence of telepathic communication seemed possible to me, the possibility of remote viewing (RV) of a location without a human "sender" seemed absurd, and foreign to my concept of human information processing. Based on reading the earlier results with Price and Swann, I became willing to admit the possibility that some people might have such talents, and so I participated as a control on the Atlas experiment - with no particular success. Later, in reviewing the results of an SRI subject (Hella Hammid) performing RV on a piece of scientific apparatus, I attempted to identify the apparatus from her descriptions, which had been judged marginally useful. My attempt was successful, and raised the question of how best to assess information content in RV experiments. An attempt was to be made to repeat this procedure, and to become more familiar with Hammid's vocabulary and manners of speech as well as with her general ability to observe and describe events.

This report is in three parts; Assessment of experimental results using the subject Hella Hammid, Criticism of experimental protocols and analysis procedures, Recommendations for future efforts.

Trip Report - SRI

6-8 November 1974

Attached are two reports concerning my visit to SRI in conjunction with the current CB contract on perceptual augmentation. The separate reports represent an Objective Assessment and a Subjective Critique of the SRI protocols and results, and reflect my dual role as observer and participant. They were written for different audiences, and so overlap in part.



SG11

I. Experiments With Hella Hammid

My assessment of Hella, based on my reading of her earlier results and an observation of those described here, is summarized by the following points:

Hella is very alert and outgoing; although not insightful.

She is very concerned with her performance, although she does not argue with the analysis of it. Her aim seems to be pleasing the experimenters rather than proving anything to herself.

Although the quality of her results varies greatly, she has had some outstanding successes, including one which I witnessed.

Certain features of all her results may be generalized: She does very badly on absolute size estimates. She does very well on indicating lighting conditions, including the presence of steady or pulsing lights. She does not often describe colors, but is very accurate when she does. She apparently cannot assess her own performance, although she is more pessimistic when she knows the target is technical.

She is very willing to try new experiments or to follow new suggestions, including working along with someone else. In fact, there are indications that she gets at least a psychological boost from such interaction.

There can be no question that Hella can repeatably, although not reliably, produce information not available through normal means. As yet she has not shown an ability to assess or increase that reliability.

Hella's Remote Viewing of  
Scientific Apparatus

Experiment

I was to witness Hella's attempts to perform a remote viewing experiment on some piece of technical equipment. The standard procedures were followed except that I selected the target, which was not drawn from the safe but selected arbitrarily by me at the last possible moment before she was to begin. Hal Puthoff accompanied me, and Russell Targ remained with Hella as inquisitor.

The target selected was an electric typewriter. I sat at it for 10 minutes typing the words "Hella", "Mustang", "Francine"; after which Hal sat and typed "typing". We then returned and listened to Hella's tape and saw her drawing.

The results were disappointing. Although elements of the drawing and certain of her verbal descriptions were excellent, an overall analysis must rate her results as a miss.

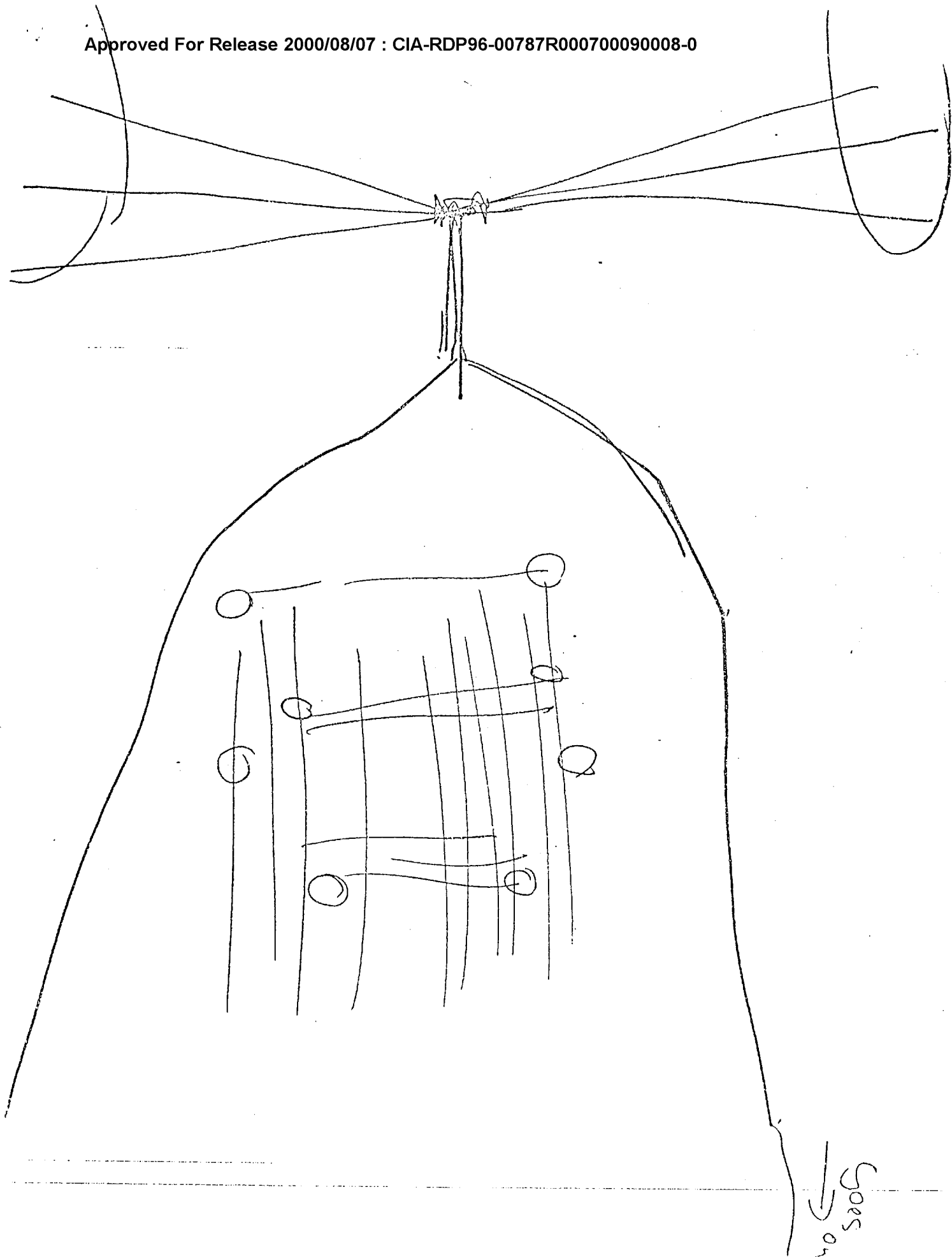
Critique

Hella is not confident of her ability to perform on the apparatus tests; and that attitude may be detrimental to her performance.

My presence may have had some effect on her. Also, the use of two experimenters at the sending end had not previously been tried with her.

The most significant results of the experiment were the fact that Russell gave a nearly perfect account of the target when I asked, although he had been engaged in actively questioning Hella during the entire experiment. This result brings into question the whole process of interrogation, with its potential for leading the subject.

In addition, the fact that Russell perceived only Hal and not me doing the typing indicates the existence of a strong preferential bond between Puthoff and Targ which must not be allowed to influence any further results. Later experiments, described elsewhere, eliminated the use of the inquisitor, and sent both Puthoff and Targ to the site. Results were quite good, and indicated that the established link between those two is not responsible for the phenomena involved in such experiments, although it may alter the specific results. Hella's performance at the church is another justification for that conclusion.



5025  
→

Background

Due to the sensitive nature of my attendance at this event, it is necessary to justify that attendance and to assure anyone concerned that such attendance was not officially documented nor was I specifically identified to the participants.

A major goal of my trip was the witnessing of Hella Hammid's performance, and an assessment of that performance. Another goal was duplication of my analysis efforts with her past remote viewings of technical targets.

It was important for me to establish a rapport with her, and I began that when she arrived for the day at SRI. I had been introduced to her merely as an interested party who happened to be at SRI and wanted to meet her. We discussed the fact that I had listened to her tape of the drill press, and from those results we (meaning Hal, Russ, and I) were interested in whether or not such combined effort could work in general. She enjoys the experiments and enjoyed talking with me about them. She is particularly impressed that they are not tiring to her, but quite the opposite.

SG1I I was attempting to establish a rapport with her, since she had done badly when observed by [REDACTED] the previous days. She was disappointed in that performance, and talked (without provocation) about the "two men from DOD" who had made her "tense".

During the middle of those discussions, I accompanied Puthoff, Targ, Hammid, and Police lieutenant Walt Konar to Stanford chapel because it would have appeared unusual for me to have left the group at this point, and because it presented a unique opportunity to observe Hella in a totally unfamiliar task and setting.

Experiment

Lt. Konar was in charge of investigating the murder of a young girl in the Stanford chapel some weeks before. When he had exhausted all available leads, he contacted SRI and asked for Puthoff and Targ's assistance, having read the recent publicity associated with their work. They had called Hella, who indicated she was willing to give it a try, although she was skeptical of her ability to help. I was introduced by name (not spelled out) to the lieutenant as an interested observer, and was invited along. Tape recordings were made of the entire activity, including during the car rides and during later discussion.

Hella performed extremely well, giving much information that was later corroborated, as well as specific information beyond that known to the police. She had never tried such a task before. Apparently the presence of the policeman and myself, as non-hostile witnesses, was not noticeably distracting to her.

In particular, she gave details of the crime location, described the victim and her assailant, indicated the exact location of the fatal wound, alluded to the ritualistic tone of the crime, and traced the victim's movements before the crime as well as the relocation of the body afterwards. Of the wealth of detail given, the only information known to be incorrect was Hella's statement that the victim was wearing earrings. The overall excellence of Hella's performance has been attested to by a letter sent from Lt. Konar to SRI, and by the fact that they are following up leads she provided.

### Critique

This is Hella's only performance to date in which neither Puthoff nor Targ were actively involved. For this reason alone, it is important to note the excellence of her results as occurring independent of any SRI involvement.

The results show the durability of the phenomena involved. No special environment or preconditioning was used. There were many people (tourists) around, and every word Hella said was recorded.

This was definitely Hella's best performance of those I am acquainted with. She was very earnest in her desire to help, and she stated that her impressions were stronger than when she is playing games with experiments.

The conditions of this experiment were much closer to operational utility than those of the routine experiments. As such, the results are more pertinent. The independent assessment by Lt. Konar should therefore be considered in any assessment of operational feasibility for such activities.

None of the data that Hella generated, that has been verified, was unknown to Lt. Konar at the time of this experiment. Therefore, it is possible that Hella received all of her information from the Lt., by some unknown means. Only when the additional facts have been verified, can the conclusion be reached that some technique akin to remote viewing was involved.

*How much  
info available  
openly or  
could  
have  
been  
summed*

SG11

Before my trip to SRI, I had been reviewing Hella's performance on remote viewing of technical equipment. After hearing her description and seeing her drawings from the experiment with a CRT graphics terminal as target, I mentioned that I could possibly have guessed the actual equipment from her descriptions. [REDACTED] suggested I try to do that with another tape she had made, which was thought to be less good than the CRT results. After two runs through the tape, my guess of a vertical boring machine was close to the actual target of a drill press.

That result was considered significant, since it indicated that more information might be present in the data than had been supposed. Two factors seemed important to me: One, I was very familiar with both CRT's and vertical milling machines, and was currently working with both. Two, I had been briefed on Hella's background and personality. In particular, I knew that she was basically untechnically oriented, that she was capable of detailed description of anything she had seen, that she was not prone to fabricate details, and that she was employed in photography.

After having spent several hours with her at SRI, I expected that my familiarity with her RV performances had very much increased. My attempt to process another of her tapes, however, was not a success. In this case, the target was the ESP teaching machine, with which she was quite familiar. I had spent my first hour on it just before I left with her tape for the evening. My guess of a view graph projector was based on arbitrary selections from seemingly ambiguous and contradictory sets of statements. For instance, I was not certain if light were shining into or out of the box. Some of her terminology, such as "burning in" had specific meaning for me based on my background. I had to decide, in those cases, whether another meaning fit her background, or whether she had picked up the terminology along with the target.

Although it is probably helpful to have a calibration on the original subject (such as realizing that Hella's sizes are generally overestimated, and her drawings are often better than her descriptions), it does seem that familiarity of the interpreter with the possible target set is the crucial aspect of such an interpretation attempt. This may be considered analogous to giving raw intelligence data to an analyst who is well grounded in the pertinent fields.



Both from the standpoint of reliability assessment and information production, the analyst must know his field as well as his source.

Unfortunately, there was no chance to work along with Hella as she performed a technical RV experiment, due to time constraints.

Necessary experimental constraints depend to a great extent on what is being constrained from occurring. If the wish is to prevent manufacture of apparently paranormal results through covert use of normal techniques, then the experimental constraints must be sufficiently tight that any such attempt will be detected. Under those conditions, the following are valid criticisms:

Documentation of the outbound experimenter's movements, destination, and perceptions should be generated, by tape recording and photographs, during the experiment. This avoids the possibility of manufacturing a site to suit the subject's description, or of describing movements and perceptions to match the subject's descriptions, after his data has been heard.

To avoid collusion between experimenters, no interrogator should be used, and no one should be present with the subject.

To avoid use of subliminal cueing to the subject, he should be free to roam during the experiment, and should be encouraged to randomly select his own locations.

To avoid any use of suggestion, the subject should not first appear at SRI; but should go directly to his experiment location, and begin the experiment at a time selected well in advance and sent to him in writing or via a third party.

Having concluded that the phenomena do exist, which I believe has been justifiably concluded, the constraints should now be shifted so as to enhance the reliability of the data and make more meaningful its analysis. Under those conditions, the following criticisms are presented:

*This follows  
statistical  
professional  
reliability /  
objectivity.*

There exists an unconscious preferential link between Puthoff and Targ which must be eliminated from any experiments. There are two reasons why existence of this link should not be considered grounds for dismissing further work with these two. First, there are indications that any pair of people involved in such experiments establish an increasingly strong link of this type, so the problem will reoccur. Secondly, Puthoff and Targ probably represent the strongest link of this sort we have yet found; so that, in some sense, they may be of unique value in evaluating the individual-dependent aspects of the phenomena.

The process of debriefing has been shown to be useful in some cases. Analysis of the debriefing data would be much simpler if the debriefer were not witting as to the target.

There is no strong evidence that an interrogator is needed. Again, the analysis could be much simpler if no one is leading the subject in either correct or incorrect directions. By moving an unwitting interrogator to the debriefing process, any additional information can be eaked out, without confusing the primary analysis.

"Symbolism" is an incorrect word to use in analyzing the data; since it connotes repressions or associations involving the subject's psychological make-up; or the subject's unconscious desire to sublimate impressions. None of the experiments I have studied here involved either the need to probe the subject's psyche, or the need to translate from one level of abstraction to a lower level. Rather, the processes that occur are simple extrapolations and analogies. The need is for an understanding of the subject's vocabulary background and speech patterns, rather than an assessment of his values and attitudes. Obviously, for a more emotional set of targets, the psychological assessment may be necessary.

Analysis of the drawings should be done both alone and in conjunction with the verbal report. Any inconsistencies should be noted, and followed up during debriefing.

The subject's satisfaction with both his drawing and his description should be recorded before and after he receives feedback. This would be needed to compute trends in the subject's performance, as well as leading to calibration of future results.

A simple analysis scheme would involve having the subject select a site or object from a set of 10 or 50 to match his impressions; after he has been debriefed. Most real-life uses for these phenomena would probably involve such limited possibilities. The effects of the size of the set would also be of interest.

The targets chosen are of such a complexity that analysis is difficult. The possible range for ambiguous results is very large. Use of simpler targets for assessing a subject's capabilities, or calibrating his performance would provide for more consistent assessments.

Repetition of targets should be used for assessment of the subject's learning, as well as for an indication of the role that familiarity plays in performance.

More real-world problems should be attempted, both to provide independent assessments and to introduce the emotional involvement which seems to enhance performance.

H was

The operational utility of the phenomena and of the SRI data has not been addressed in this assessment of their results, since that was not the purpose of this current contract. Any further effort in support of OTS must, however, address that point.

I would suggest that a follow-on be in two parts: 1) Identification of methods for increasing the signal-to-noise of RV data, and for estimating attainable SNR. This implies a need for meaningful definition of SNR. 2) Design and running of tightly constrained experiments to demonstrate the use of redundant coding techniques to telepathically transmit coded messages, with a pre-determined degree of reliability.

In the first section, the effects of calibration, training, repetition, multiple outbounders, groupings of subjects, and combination or decomposition of targets should be considered. An analysis of the phenomena should be performed similar to that done on an unknown machine in order to draw its state diagram.

In the second section, the basic utility of paranormal communication can be quickly and directly assessed in an operationally useful context. The possibility that the utility does exist has already been demonstrated on a number of occasions.

It is important to indicate the alternatives available at this point; although that is not my task. I do want to emphasize one alternative which is not available. Given we do not continue to fund SRI research in this field without interruption, we will probably not have a later chance. Both Puthoff and Targ are sufficiently dedicated to this work that they will publish everything they have generated if they are forced to seek funding. At present, they are counting on our continued support, and so have not actively pursued other sources.

If they do dump their data on the open market, this may include publishing their association with unreliable subjects, as well as the presentation of unanalyzed data. Already there are many people contacting SRI from the outside, and the number of newsmen and radicals soliciting SRI for time and information would definitely get out of hand - to the point where the agency could not risk involvement. At present, SRI represents the most advanced center for paranormal research, with an excellent reputation for credibility. Although the directors of the Institute would certainly not allow its reputation to suffer due to Puthoff and Targ's publication; the future interests of this agency may suffer, and so should be considered in the current decision.

with whom?

November, 1974

Approved For Release 2000/08/07 : CIA-RDP96-00787R000700090008-0

INTRODUCTION

The following pages include a schedule of my activities at SRI, a report on each of those seven activities, and an extensive analysis of the second remote viewing. Each of those sections stands alone, and a summary assessment is best obtained by reading each of the critiques, since they indicate not only my criticisms but the steps taken to counter them.

By way of additional comment, my impressions were favorable with regard to the SRI effort, the existence and hardness of the phenomena involved, Hella's credibility and capability, and my own performance. Although this is a subjective assessment of my own performance, I have tried to restrain my amazement and excitement over the results. In particular, since this is written weeks after the events, I have attempted to not give myself benefit of the doubt when relying on memory. Very likely the SRI report of my activities will be less restrained. Also, the results need be viewed in the context of a number of isolated events occurring over a short period of time, without precedent in my experiences.

An additional subjective assesement of operational utility for these phenomena is being completed, but is not part of this historical report.

Approved For Release 2000/08/07 : CIA-RDP96-00787R000700090008-0

SCHEDULE

Wednesday

- 1:30 A.M. arrive motel
- 9:30 A.M. arrive SRI, tour and meetings
- 10:00 RV #1 and its debriefing
- 12:00 lunch and review of Nature paper critiques
- 1:00 met Hella Hammid, observed her performance at Stanford chapel.
- 3:00 witnessed critique of Hella's performance
- 4:30 discussions with Targ and Puthoff regarding schedule for the next days, obtained further background reading on Remote Viewing and Ryzl's paper on redundant coding
- 7:30 dinner meeting including Puthoff and [REDACTED] off-site. Followed by discussion with [REDACTED] regarding handling of Hella's data and my further activities. SG1I  
SG1I

Thursday

- 10:00 RV #2 and its debriefing
- 1:00 select target, Hella's RV and its critique
- 3:00 Hella leaves, further discussion of her results
- 4:00 Obtain tape of Hella performing an RV on scientific apparatus, to try repeating the drill press experiment.
- 4:15 make several runs on the ESP teaching machine, using various techniques
- 6:30 listen to Hella's RV tape, identify keywords; read coding theory papers.

Friday

- 9:30 obtain Hella's drawings from the RV and again listen to tape
- 10:00 debriefing on my performance
- 11:00 RV #3 and debriefing
- 2:00 abacus experiment
- 2:20 teaching machine experiment
- 4:00 correct RV #2 transcript, obtain copies of drawings and photos
- 6:00 total debriefing: my results, my criticisms, expected follow-on, alternative funding sources, what my trip accomplished, outlook for operational utility
- 10:00 flight out

### Mood

The first experiment utilizing me as subject was run immediately upon my arrival at the SRI lab. The standard mood adjective assessment was not done in this case or on the subsequent days for lack of time and because I was already noting my experiences in detail. At this time I was very tired and suffering from a bad head cold, and so was certain no one could expect a good performance from me. As a result, I was completely relaxed. Puthoff and Targ seemed anxious to run such an experiment at once as a way of calibrating me, and defining our schedule for the three days.

### Protocol

Hal Puthoff obtained a standard target site from the office safe, under their usual protocol, and proceeded to the place. I remained in the experiment room with Russell Targ, discussing a variety of topics. At the agreed time, I turned on the tape recorder and described the images that came to mind. At various points, Russell encouraged me to talk in further detail. I drew no pictures. Another tape was made when Hal returned and I was debriefed.

### Data

Transcripts of these tapes were not completed before I left and so are not contained here. They will be included in SRI's report on my visit. From my notes, key points in my description were:

Hal is shuffling about an area that is 50 feet from parked cars. The area has a geometrical shape (not round) which he has decided to stay inside, although it is not a physical constraint in the sense that he can get out of the area if he wants. There is a railing more than waist high. He is looking both out and down. There is movement, in the sense of a breeze, past him. He walks back to our room.

When Hal returned and asked how it went, I began to confess that I had avoided describing my initial impressions. At that point he turned on a second tape recorder, and I continued with a description of Hal standing on a wooden dock with rippling water going past him. There were two reasons why I had not described these feelings: first, the image seemed too much like my own apartment dock and I thought I was just remembering it. Second, I had driven around SRI's periphery in locating the lab, and was certain there was no water around. Since I wanted to do well, I had not mentioned those impressions, although I later realized that I wanted them on tape for completeness of the documentation.



Mood

The first experiment utilizing me as subject was run immediately upon my arrival at the SRI lab. The standard mood adjective assessment was not done in this case or on the subsequent days for lack of time and because I was already noting my experiences in detail. At this time I was very tired and suffering from a bad head cold, and so was certain no one could expect a good performance from me. As a result, I was completely relaxed. Puthoff and Targ seemed anxious to run such an experiment at once as a way of calibrating me, and defining our schedule for the three days.

Protocol

Hal Puthoff obtained a standard target site from the office safe, under their usual protocol, and proceeded to the place. I remained in the experiment room with Russell Targ, discussing a variety of topics. At the agreed time, I turned on the tape recorder and described the images that came to mind. At various points, Russell encouraged me to talk in further detail. I drew no pictures. Another tape was made when Hal returned and I was debriefed.

Data

Transcripts of these tapes were not completed before I left and so are not contained here. They will be included in SRI's report on my visit. From my notes, key points in my description were:

Hal is shuffling about an area that is 50 feet from parked cars. The area has a geometrical shape (not round) which he has decided to stay inside, although it is not a physical constraint in the sense that he can get out of the area if he wants. There is a railing more than waist high. He is looking both out and down. There is movement, in the sense of a breeze, past him. He walks back to our room.

When Hal returned and asked how it went, I began to confess that I had avoided describing my initial impressions. At that point he turned on a second tape recorder, and I continued with a description of Hal standing on a wooden dock with rippling water going past him. There were two reasons why I had not described these feelings: first, the image seemed too much like my own apartment dock and I thought I was just remembering it. Second, I had driven around SRI's periphery in locating the lab, and was certain there was no water around. Since I wanted to do well, I had not mentioned those impressions, although I later realized that I wanted them on tape for completeness of the documentation.

The impressions came easily to mind. It was like daydreaming except I had Russ as director, and the impressions had to be translated into words and pictures with conscious effort. As a result, I was reluctant to talk. I did not expect that I had done well. I was, however, surprised that I had been able to really clear my mind, and had then gotten a consistent set of impressions for 15-20 minutes. Also in the past experiments I had reviewed, there seemed to be no impressions of time or motion (as well as no sounds) and so I had not expected to receive such impressions when following that protocol.

### Analysis of Results

Hal became obviously either pleased or amused at listening to my tape during debriefing. I was too impatient to make any drawings and so we proceeded to revisit the target site. My initially suppressed description was very accurate, as were my other statements. From my impressions I could have identified the actual target location, which was a bridge across a man-made brook on the SRI grounds. I was extremely surprised by that, and later analyzed the proceedings for possible explanation.

### Critique

It was frustrating to attempt a 15-20 minute session, as my mind started to wander.

The questioning sometimes was distracting. The process I was performing seemed to involve getting an impression, then searching for a word or image to match - sometimes an entire experience would result from the search. The process was analogous to smelling something, which may recall the name of a fragrance, or may recall an entire event complete with sounds and emotional memories. Sometimes the questions would get me off on such a side track.

I questioned how I could be certain the site was not manufactured after-the-fact either by monitoring my description as I made it or during debriefing. Either Hal's cleverness or computer assistance could then select a site similar to my description. There were three retorts to this:

- 1) Originally, the outbound experimenter did tape his movements and destination. This procedure was later dropped since it did not seem to add to the analysis, but merely generated more tapes to be catalogued.

2) The high strangeness of the sites would make it difficult to manufacture such places within the required range, if any specific description were given. Due to my unfamiliarity with the area, I could not effectively counter their challenge to match my total description to any other site within 15 minutes from SRI. However, I did attempt to construct such a site near my D.C. office and could not. If some of the details were ignored it became possible.

3) We decided that we would tape a complete record of the outbound experimenter's journey and activities at the site, both to eliminate such a possibility of manufacture after the fact; and to provide time calibration data for my impressions of body movement, posture, and intent. Unfortunately, this was not done until the third experiment.

Much discussion has been made concerning the "symbolism" used by RV subjects. This term carries incorrect connotations, referring to a purposeful obscuring of details. Rather, the process which occurs is a pure translation from experience to words, which may necessitate analogy but not symbolism. By a discussion of symbolic content in the RV data, experimenters imply that the deep psychological make-up of a subject must be probed before his data can be assessed. That is not true.

As described in the objective report, I accompanied Hella to the church primarily to observe her, although I did have a number of questions in mind regarding my own performance potential and possible interaction with her.

She did extremely well, as described elsewhere in this report and as attested to by a letter from the officer in charge. I will add here only a few of my own observations.

Hella's performance indicates the durability of the phenomenon involved. The environment was totally uncontrolled and the task was completely new to her, since it involved perception of past events, with no assistance from a "transmitting" experimenter.

The attending officer knew full details of the case, so that Hella could theoretically have gotten all the verifiable results from him via telepathy. She did add information regarding the suspect's description and identity which have yet to be verified.

The possibility that the entire event was staged for me is not worth consideration. Since I viewed official reports and video tapes at the Menlo Park police barracks, the staging would have required police co-operation.

Hella's results support the frequent assertion that subjects perform better on more difficult and important tasks, rather than when playing games.

In attempting to establish rapport with Hella, I directed some questioning of her. She in turn began asking me for my impressions and confirmation of hers. Since the entire proceedings were being taped, I backed off and said I wanted to walk around. However, we did briefly work together on the description of the victim, and I believe that was at least a psychological boost to her performance. (She directed the officer at one point to question me further since I seemed to be on to something, but I was able to avoid his further interest by describing aspects of the case that were completely wrong. He paid me no more attention, and I receive no notice in his further correspondence with SRI.)

I found it was possible to get a number of impressions myself as I walked about the church, although they were not as specific as Hella's. I do believe that a group discussion following independent observations would effectively integrate out some of the noise involved in such a process.

Hella is very much concerned with her performance. After the visit to the church, she several times cited statements she had made and the fact that no one had told her the data before hand. She was somewhat surprised at how well she had done, and joked about how much further she should go. She is attempting further efforts on the case, and it will be interesting to follow them.

Mood

Of my three RV experiments, I talked most freely during this one, and a mood indicator would probably have shown me to be still excited over the events of the previous day. As a result, I talked more in this experiment, giving elaborate detail, and drew a set of pictures.

Protocol

The desire was to duplicate the standard protocol as performed the previous day. I made a number of mental adjustments: I would dictate everything that came to mind, I would concentrate on body movements, I would work on detail rather than overall impressions

Data

A completely checked and verified transcript of my tape is included in a later section, along with a detailed attempt at objective analysis. The RV occurred in three parts:

- 1) First, I attempted to predict the site at a time when I expected Hal was on his way there.
- 2) Second, at the agreed time I get an initial impression of shielding and then perception of geometrical forms.
- 3) Third, I then get an impression of a building interior, and continue to be involved with the building for the remainder of the experiment.

Subjective Assessment

1) At the time of my first attempt, Hal was in fact still waiting in Bart Cox's office for a site to be selected from the safe. He was leaning against a more than waist high counter which has a light wood top. My impression of him leaning against a light wood workbench of similar height, and my later statement that this is not a prediction but a viewing at the time, are both essentially correct. In addition, I correctly describe "papers and small items, no large equipment" on the counter top.

feedback of the entire trip. Initially, I describe a positive feeling of an absence of emissions, and guess that Hal is in the shielded room which I have not seen but know to exist. Soon after that statement, I get a sensation of moving triangles which I describe as looking through a prism or shooting a movie through a Kallidescope. In addition, I see Hal grinning and chuckling to himself. The scene then shifts inside a building.

At the time of this description, Hal was reportedly standing inside the left tower shown in Figure RV #2-1. Upon remembering that Pat Price had gotten a shielded sensation under the same conditions, he decided to move out, but first wanted to give me a good target in case I was getting an impression. Therefore, he looked up through the tower, and spun around.

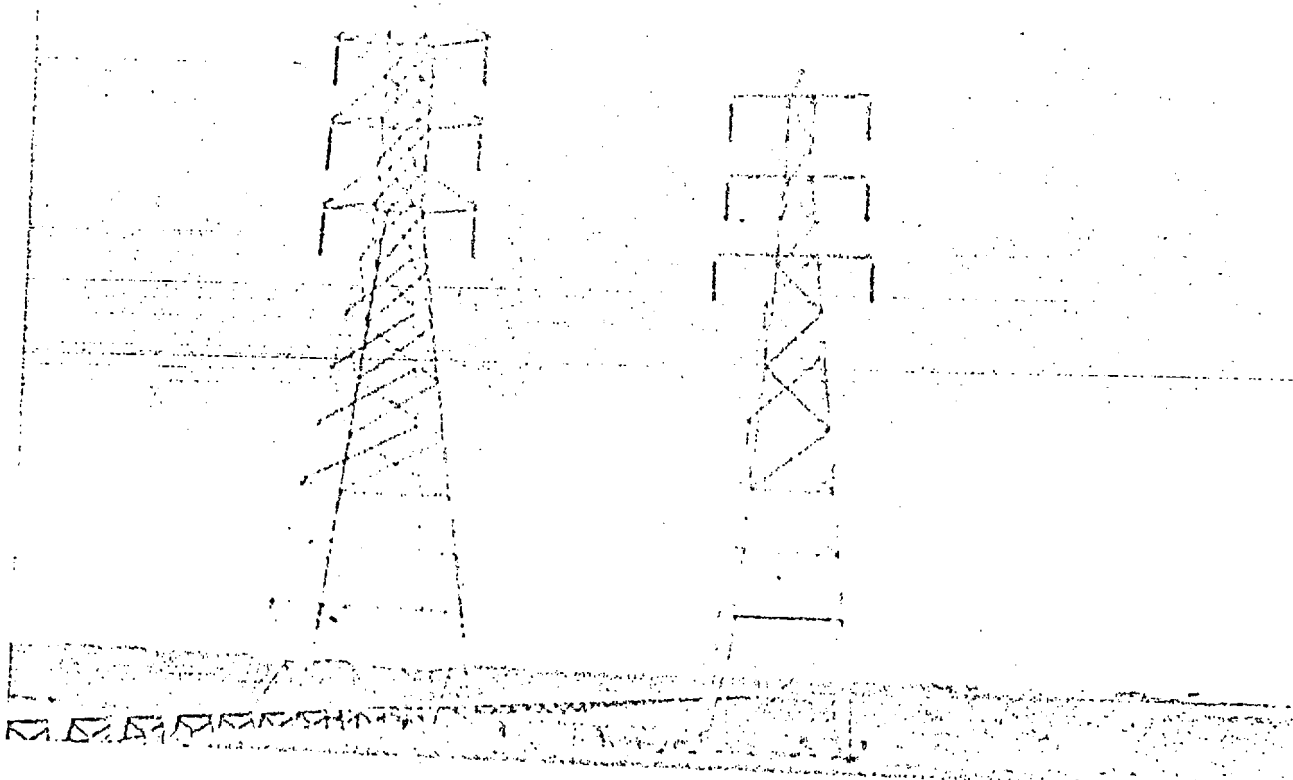
The weather was too wet for me to get any good pictures but, as SRI's photos should show, and as I verified for myself, my description gives a very good picture of the actual scenes.

3) For the remainder of the experiment I describe the interior of a building which is a museum and art gallery where movies are shown; a tourist type place for walking around which is not a business place. The architecture is busy, with the main room about 40 x 40.

It is not really a museum. Also, just before he leaves, Hal turns a complete circle and scans the whole place.

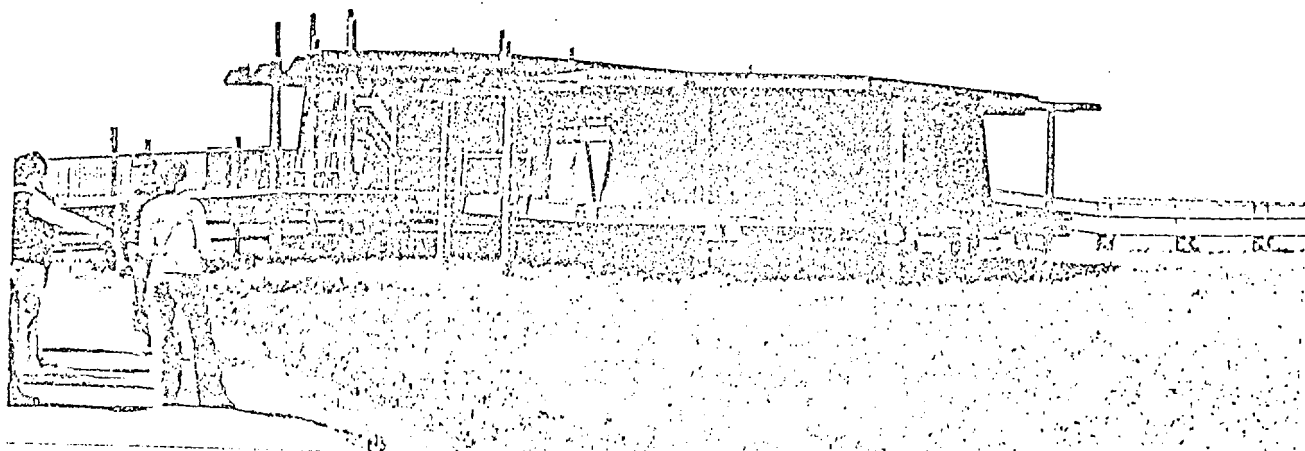
Those facts are all correct. The details of the description are a little better than 50% correct as later discussed.

I felt frustrated at my inability to achieve the precise overview I had expected remote viewing to entail. I was beginning to suspect that what I must really be doing was picking up unprocessed sensory data from Hal, along with his intentions and body posturing. However, in the third portion of the experiment, I am concerned with the interior of the building, while he remains outside. Either I am getting impressions from his unconscious memories of the interior, or I am merely using him as a beacon, in the true RV sense. Unfortunately, I do not have the ability to raise up and clearly see the entire site, but am restricted to more myopic views.



RV #2 - 1

RV #2 - 2



TARGET #2



During debriefing, Hal was delighted with my Kallidescope description, as well as with the general content of the building description. I was particularly surprised by my impressions (correct) of absolute compass directions since I am characteristically poor at directions, and could not even figure out the heading of my own house.

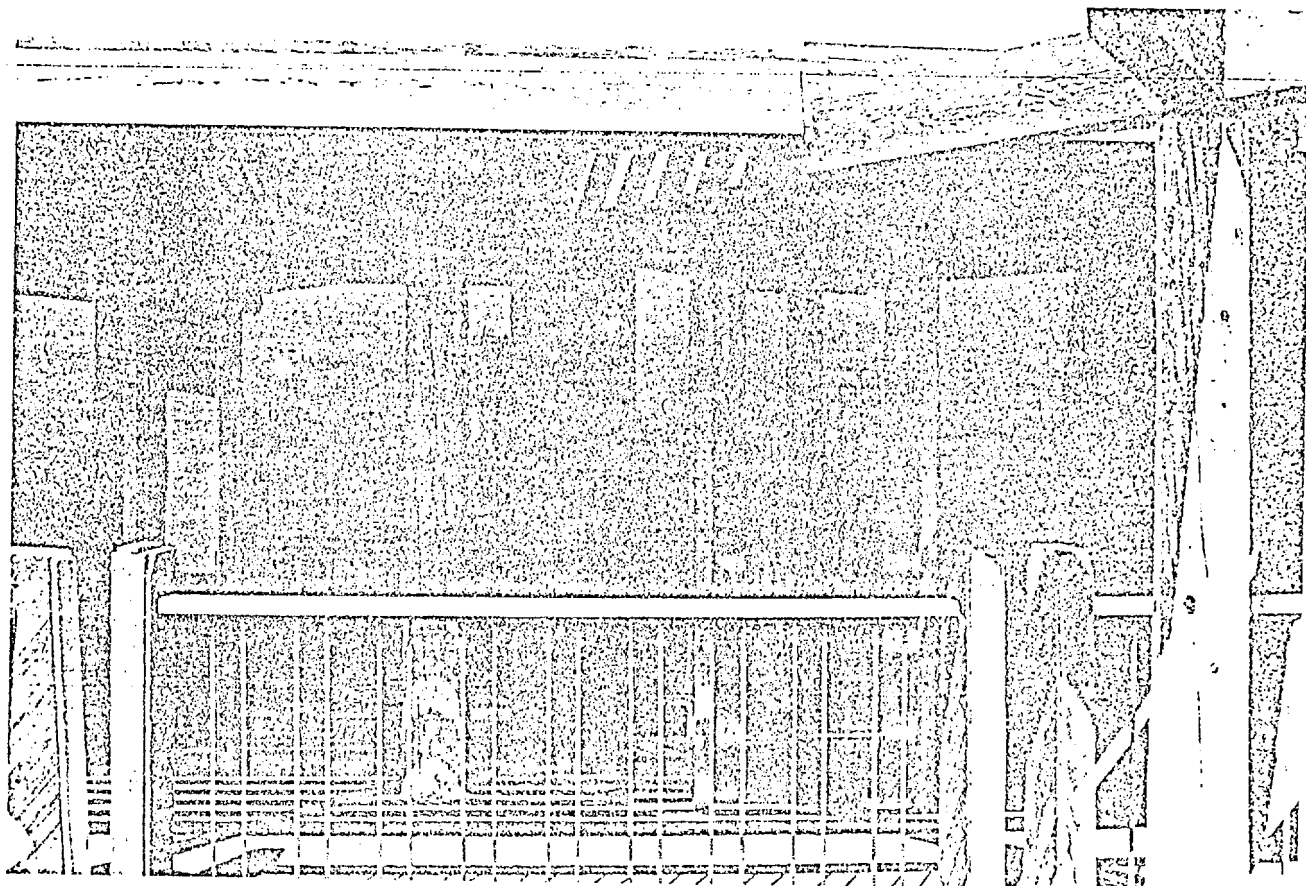
### Critique

Although it would seem impossible to manufacture a site having both the Kallidescope and museum aspects, it is very unfortunate that no record was made of Hal's movements. At the time, we wished to duplicate the preceding day's protocol, and so did not wish to introduce the need for Hal to dictate all his moves and intentions into a recorder. (In retrospect, there was no sufficient reason for this decision. The shortness of my stay made us continually choose between replication of results and trials of new experiments.)

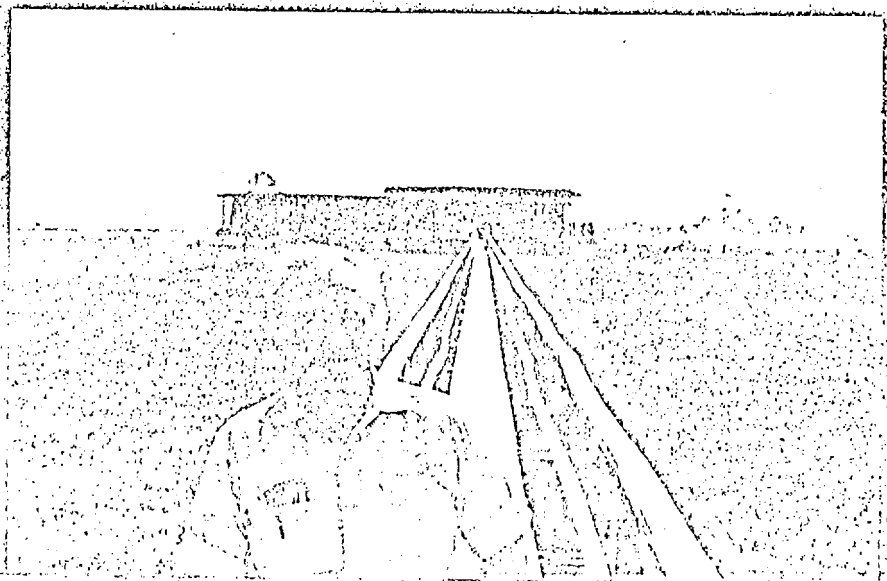
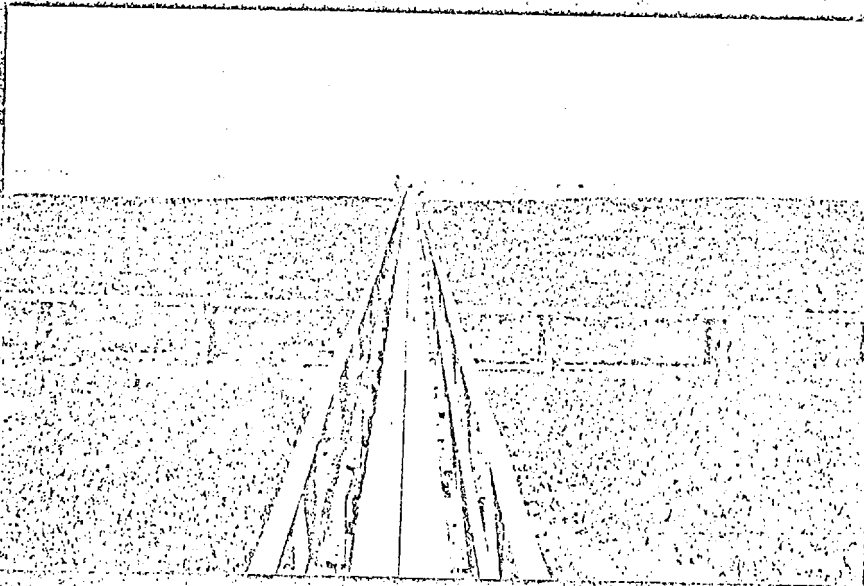
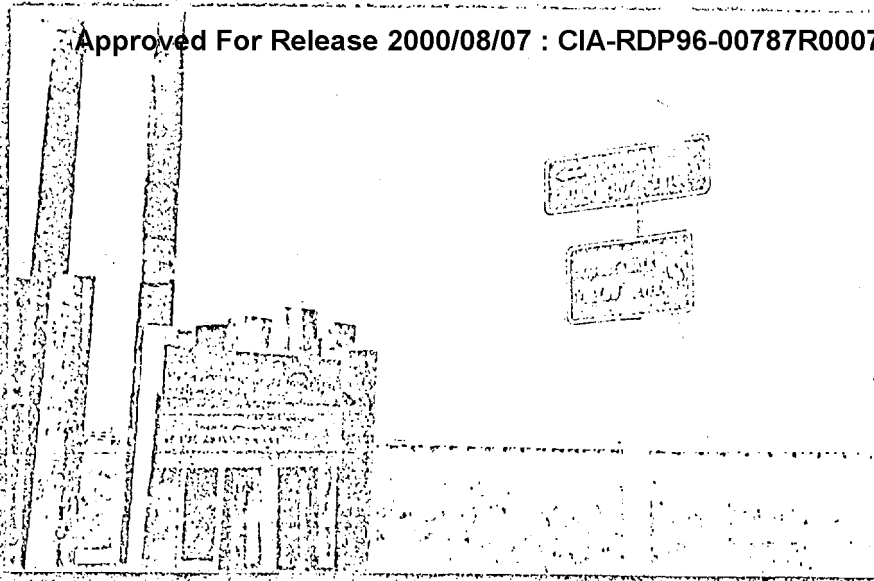
There were particularly bad effects in this instance from the interrogation procedure. In certain cases, the questions served to distract me by either drawing my attention to something else in my perception or to Hal's perceptions. In other cases, the questions were completely misleading, either in making wrong suppositions ("describe the room Hal is in" when he is outside), or asking for further detail on an incorrect point of description ("what color is the floor?" When what I have described is the outside area). I was not consciously able to distinguish between the perceptions that Hal was getting, and the remaining ones I got. Therefore, any question which directed me to go and get a specific piece of information might lead me to give conflicting descriptions.

Due to the effects stated above, it is additionally difficult to analyze information received under the interrogation process. My next RV would use no interrogator.

The question of personality dependance is now raised, since I wonder whether I can perform with Russell on the outbound end. In addition, the effect of multiple outbounders should be studied. Due to the lack of time, all of these changes are made in RV #3.



TARGET #2



PHOTOS OF TARGET #2

Abacus

Experiment

Two trials were made using the abacus clock which had previously been an RV target. As shown in the SRI reports, the apparatus has 5 rows of 10 beads each, plus a clock face with two hands, a slide indicating the date, and cutouts for exposing day of the week and month.

Hal Puthoff wanted to try perception of a binary message generated by moving all the beads in each row to the right or left. I selected positions from a random number table, and focused on the resulting bead positions while he attempted to visualize them in the next room. He got 3 out of the five bits, essentially chance results.

I preferred that he set up the entire apparatus, including movement of any number of beads in each row. I guessed that I could get the outline of the beads pattern.



The outline was the correct shape  
but in trying to come up with

corresponding digits, the sequence generated was 66689. If these are positioned left or right based on the outline shape, then three of the digits were correct. The small hand of the clock was correct, and the approximate position of the date slide indicator was close, although an incorrect number was assigned to it.

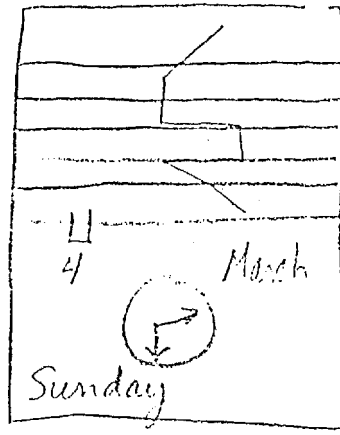
Results were not good enough to further consider at that time, but additional trials along with more familiarity with the apparatus are worth pursuing.

Critique

It is interesting that I predicted the type of Task I could do well.

This was the only coding-type experiment we had time to perform, although we had discussions involving a good design for a redundant coding experiment.

Both for training purposes and ease of analysis, more such short experiments should be emphasized.



(4) 6	✓
6 (4)	✓
6 (4)	X
8 (2)	X
(1) 9	✓
March	X (April)
21	✓
:33	X (:00)

Sunday	X (Saturday)
4th	X (11th)

<u>Guess</u>	<u>Result</u>
--------------	---------------

ABACUS

ESP Teaching Machine

In an attempt to demonstrate some degree of learning or improvement during my three days, I made three series of runs on the teaching machine which was designed by Russell Targ for NASA, and which is described in the SRI reports. Basically, it is a four-state machine, with the states generated randomly. Each run consists of 25 trials in which the subject selects one of 4 state buttons or the "pass" button. The machine can also be operated in two precognitive modes, during which the machine state is determined either 1/2 or 1 second after the operator selects his prediction of the state.

I tried a variety of approaches: right hand only, left hand only, both hands, the preceding three both with eyes open or shut. By shutting my eyes I was avoiding the visual feedback on my incorrect selections. Correct selections rang a bell. After 200 runs of each type, I appeared to do best by using both hands, eyes open, and proceeding very fast. I then performed 2000 such trials, and attained an average of about +1 $\sigma$ , for  $P \approx .10$ .

Generally, people get better as they practice more with the machine. On the following day, I repeated my run of 2000, and scored precisely at chance, although with possibly a significantly extra-chance variance. I've not yet received results of those calculations or computed them myself.

Later that same afternoon while both Hal and Russ were called to the phone, I went in to again run the machine, this time in an angry mood over my earlier results. I cleared the machine, and then punched out very deliberately 15 hits out of the 25 trials. It sounded as if the bell were ringing constantly. I ran for Russ and Hal to show them the result and then attempted to repeat it. After two trials below chance, I abandoned the machine again.

Although a run of 2000 trials took me less than two hours, I did not have a chance to make any further runs.

Interpretation of Hella's RV Tape

SG11 Before my trip to SRI, I had been reviewing Hella's performance on remote viewing of technical equipment. After hearing her description and seeing her drawings from the experiment with a CRT graphics terminal as target, I mentioned that I could possibly have guessed the actual equipment from her descriptions. [REDACTED] suggested I try to do that with another tape she had made, which was thought to be less good than the CRT results. After two runs through the tape, my guess of a vertical boring machine was close to the actual target of a drill press.

That result was considered significant, since it indicated that more information might be present in the data than had been supposed. Two factors seemed important to me: One, I was very familiar with both CRT's and vertical milling machines, and was currently working with both. Two, I had been briefed on Hella's background and personality. In particular, I knew that she was basically untechnically oriented, that she was capable of detailed description of anything she had seen, that she was not prone to fabricate details, and that she was employed in photography.

After having spent several hours with her at SRI, I expected that my familiarity with her RV performances had very much increased. My attempt to process another of her tapes, however, was not a success. In this case, the target was the ESP teaching machine, with which she was quite familiar. I had spent my first hour on it just before I left with her tape for the evening. My guess of a view graph projector was based on arbitrary selections from seemingly ambiguous and contradictory sets of statements. For instance, I was not certain if light were shining into or out of the box. Some of her terminology, such as "burning in" had specific meaning for me based on my background. I had to decide, in those cases, whether another meaning fit her background, or whether she had picked up the terminology along with the target.

Although it is probably helpful to have a calibration on the original subject (such as realizing that Hella's sizes are generally overestimated, and her drawings are often better than her descriptions), it does seem that familiarity of the interpreter with the possible target set is the crucial aspect of such an interpretation attempt. This may be considered analogous to giving raw intelligence data to an analyst who is well grounded in the pertinent fields.





Interpretation of Hella's RV Tape

SG11

Before my trip to SRI, I had been reviewing Hella's performance on remote viewing of technical equipment. After hearing her description and seeing her drawings from the experiment with a CRT graphics terminal as target, I mentioned that I could possibly have guessed the actual equipment from her descriptions. [REDACTED] suggested I try to do that with another tape she had made, which was thought to be less good than the CRT results. After two runs through the tape, my guess of a vertical boring machine was close to the actual target of a drill press.

That result was considered significant, since it indicated that more information might be present in the data than had been supposed. Two factors seemed important to me: One, I was very familiar with both CRT's and vertical milling machines, and was currently working with both. Two, I had been briefed on Hella's background and personality. In particular, I knew that she was basically untechnically oriented, that she was capable of detailed description of anything she had seen, that she was not prone to fabricate details, and that she was employed in photography.

After having spent several hours with her at SRI, I expected that my familiarity with her RV performances had very much increased. My attempt to process another of her tapes, however, was not a success. In this case, the target was the ESP teaching machine, with which she was quite familiar. I had spent my first hour on it just before I left with her tape for the evening. My guess of a view graph projector was based on arbitrary selections from seemingly ambiguous and contradictory sets of statements. For instance, I was not certain if light were shining into or out of the box. Some of her terminology, such as "burning in" had specific meaning for me based on my background. I had to decide, in those cases, whether another meaning fit her background, or whether she had picked up the terminology along with the target.

Although it is probably helpful to have a calibration on the original subject (such as realizing that Hella's sizes are generally overestimated, and her drawings are often better than her descriptions), it does seem that familiarity of the interpreter with the possible target set is the crucial aspect of such an interpretation attempt. This may be considered analogous to giving raw intelligence data to an analyst who is well grounded in the pertinent fields.

Both from the standpoint of reliability assessment and information production, the analyst must know his field as well as his source.

Unfortunately, there was no chance to work along with Hella as she performed a technical RV experiment, due to time constraints.

RV #3

Mood

This experiment was not the first event of the day, as the other two RV's had been. In this case, I had just completed the interpretation run on Hella's RV of the teaching machine. I had been disappointed in my performance. However, my interest was peaked for this RV #3, since there were several protocol modifications I wished to try. In addition, this could be my last RV of the trip, so I wanted it to go well.

Protocol

Based on my observations during Hella's performances and during my own, I made a number of changes to the standard protocol. In each case, I believe the change resulted in stronger evidence for occurrence of paranormal phenomena, as well as demonstration that the phenomena are not fragile or protocol-dependent. From the suggestions contained in each section of this paper, the following changes were made for this run:

Both Russ and Hal went to the site, which was a standard target obtained from the safe.

No one remained with me; there was no interrogator.

All movements, intentions, and descriptions of the site were recorded by Russ and Hal from the time they left the building.

In addition, although I had not mentioned it beforehand; I moved around inside the room, moved outside of the inner room,

I taped all of my responses, but did not mention my movements on the tape.

Data

Transcript of my tape was not completed before I left and so is not contained here. Photographs of the target site are also still in preparation. The following data is from my notes and from memory. I drew no pictures at that time.

I spoke very little, relative to RV #2. The predominant feature was white arches, on a circular base. I felt I could distinguish the presence of both Hal and Russ. I tried concentrating on Russ, to check whether my results were dependent on Hal; and I got a clear impression of Russ sitting very low to the ground such that his knees were up by his ears, And at one point his head rested on his arms, which were folded across his knees. I did not like the place, and had an uneasy feeling about it. I mentioned the word "cupola" which came to mind, and stated that I didn't know what it meant. I had a particular sensation of looking down and attending to one point purposely, although the site could have been used as a vantage point.

### Subjective Assessment

The few images I did receive were very strong. However, the peripheral information just seemed blurred out. In particular, the body sensations of sitting, fixating on an area, and being uncomfortable were very strong. I was not particular pleased with my results, although I had ascertained that all my moving about during the experiment did not affect my perceptions.

### Analysis of Results

When Hal and Russ returned, my first statement was that I didn't like the place. I also mentioned my strange use of the word "cupola", and my image of Russ sitting down. At Hal's suggestion, I tried to draw my overall image, which was of white arches. He then directed me to draw the cupola, and also an overhead view. He was delighted with the results, and asked his secretary to guess what it was on our way out to the site. She did not know, but responded to his whispered answer by saying "oh, that's right!", which really pleased him.

We drove to the site, which was a park play ground, and Russ and Hal recreated their motions, which involved sitting on and spinning a merry go round composed of a disk with large white loops for holding on. Many screaming children were around, as is obvious from the tapes. I agreed that my images had been pretty good, but noticed that a maintenance building adjoining the merry go round area had a cupola on the roof (I had looked the word up in an illustrated dictionary just before leaving the office), and that it had a black lightening rod on top, and divisions just as my top view drawing showed. Hal and Russ both expressed dismay that the structure was there and that they had not noticed it. However, my feeling was that I had originally seen only the arches, and when directed by Russ to go back and draw the cupola, I had done just that by finding a cupola at the site. I'm certain I must have known

the word in the past sometime. My TOP VIEW drawing could be a good sketch of that cupola, while the other two are composite of the two features - arches and cupola.

At the site, Hal and Russ recreated their motions, which I later verified by listening to their tape. The sensations of focusing on a spot, looking down, and feeling uneasy were strongly verified by Russ, who had gotten quite dizzy during the experiment and had been eager for it to end.

We were all surprised that no strong perceptions of lots of people, lots of noise, or rapid movement ever came through.

### Critique

During debriefing, wording of the questions or instructions is critical.

Assessment of debriefing results must be done in the context of the interrogator's involvement.

Lack of an inquisitor during the experiment was no handicap, although I would generally produce less data when alone.

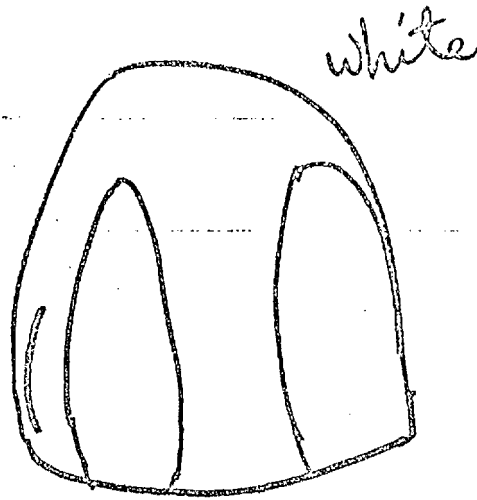
I was able to receive impressions of Russell, as well as of Hal.

Using two outbounders seemed to increase the strength of a few primary impressions, while washing out the rest. Part of that washout, however, may have been due to the saturation effects of so much noise and such rapid movement.

As in the previous experiments, my sensations of bodily movements or feelings were correct; although in this case there were several strong sensory inputs of that type which I failed to receive.

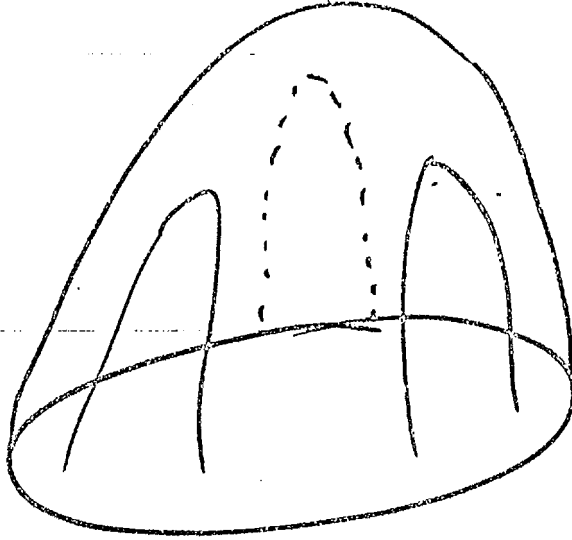
Taping by the outbounders was desirable in this case, since it verified my impressions, as well as indicating that the cupola was not an intentional part of their target activities.

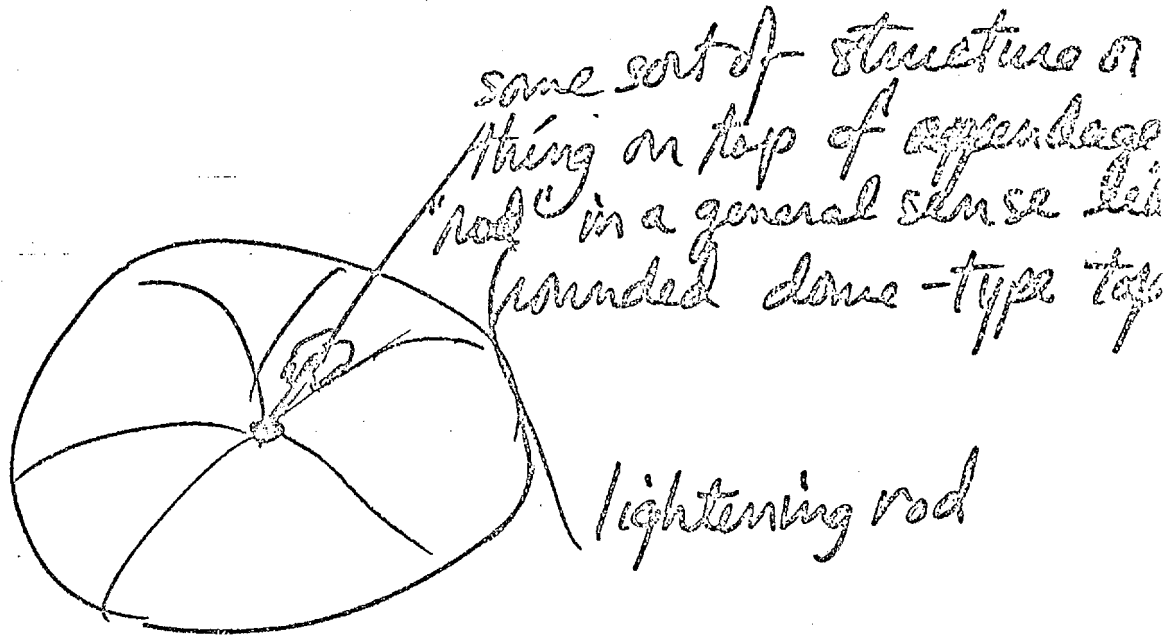
From my movements about and outside of the experiment room, I conclude that no subliminal suggestion techniques were being used on me.



*medium dark grey thing*

*rod black or brassy*



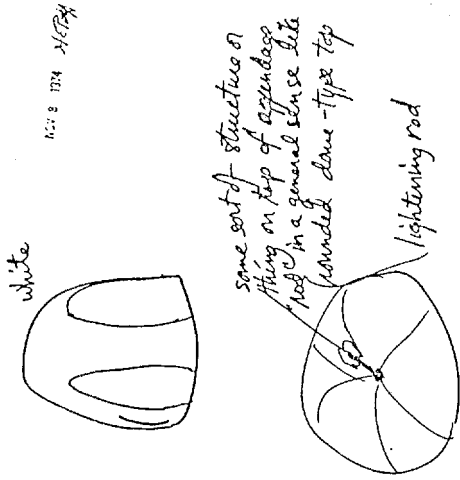
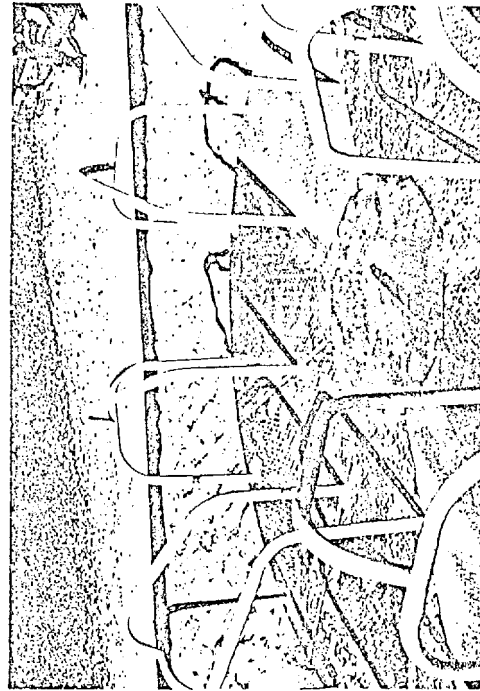
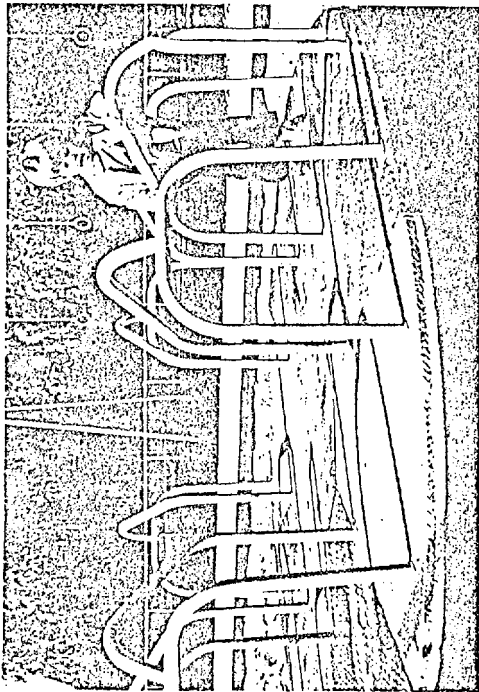


some sort of structure or  
thing on top of apparatus  
"rod" in a general sense like  
rounded dome-type top

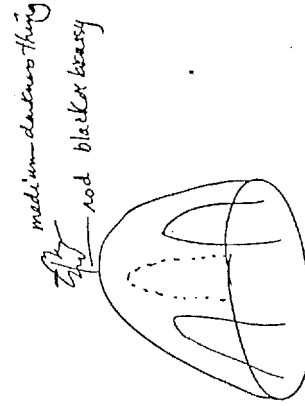
lightening rod

Top View





TOP VIEW



RESPONSES OF VISITING  
SCIENTIST SUBJECT

MERRY-GO-ROUND TARGET

SA-3183-17

Objective Analysis

RV #2

Baylands Nature Preserve

Transcript of the second remote viewing experiment was typed out the same day, and I corrected and verified it by replaying the tape made during the experiment.

There are three separate parts to the narration. First, the attempt to predict the site beforehand. Second, the description of a shielded environment followed by views through a kallidoscope. Third, the description of the building interior.

In each of the three parts (as in the other experiments as well) the initial description is good. Attempts to further elaborate on the descriptions begin to involve analogies, guesses, and memories; and get increasingly poor. Subjectively, the overall performance was definitely extra-chance, with the second portion particularly satisfying. As an attempt at objective analysis, each aspect of the drawing and each phase of the verbal description were designated true (+) or not true (-) with a (?) only for those details not verified. The drawing is difficult to so analyze, since it was drawn in conjunction with the verbal description.

The score given to each phase is shown, and then placed in summary categories. A number of sophisticated computations could be done to look at such variables as the time sequence of (+) and (-) responses. I doubt they would provide any pertinent information. A simple summation of the scores by category indicates only five significant categories: the body position of the outbound experimenter, ambience of the location, and relative locations were significantly true. Object names and descriptions relating to the out-bounder's environment were significantly untrue.

There are several problems with doing such an analysis:

- 1) The role of the interrogator must be considered, as it directs or misdirects the subject and focuses attention on categories of response easy or difficult to the subject.

- 2) Each RV site in these experiments is generally chosen to have a high degree of strangeness. Recognition of the peculiar qualities of the site should be weighted more heavily than correctness of details such as color or sizes. An analysis procedure should reflect informational value, relative to the particular goal in performing the RV. My personal goal was proof that I could perform remote viewing; my subjective analysis indicated that I was successful. The objective analysis attempted here

indicates that the informational quality of the results depend upon the categories of interest.

3) Categorization was arbitrarily done, and may have incorporated some additional bias into the analysis.

4) A number of correct items were not described, but are implied by the details described. For instance, by discussion of the floor plan it is implicitly stated that the site includes a building. Any analysis by count should include such implicit statements, although that is not attempted here.

5) It is not certain that the channel for RV transmission does not also involve telepathy; in fact there is evidence that the involvement does exist. Therefore, it is important that the outbound experimenter both focus his attention and record his perceptions and intentions, for correlation with the subject's descriptions.

6) By knowing the analysis procedure beforehand, the subject can generally improve his response relative to that assessment. In particular, a subject can refrain from describing details or drawing analogies. It would seem he might also use knowledge of his own calibration results to indicate what categories of data he usually gets correct. A learning program using such feedback might increase performance relative to a specific analysis. In all cases of remote viewing run to date, however, the attempt has been to obtain as much information as possible, without imposing any filtering. Objectively analyzed results may have suffered from this emphasis on production rather than validation of information. The phenomenon of remote viewing has now been sufficiently demonstrated that the current concern should be increasing the SNR of the subject's output.

SG11

TODAY IS THURSDAY, NOVEMBER 7, 1974. THIS IS RUSSELL TARG WITH [REDACTED] BLDG. 30 AT SRI. THE TIME IS 10:10 AM. HAL HAS LEFT TO OBTAIN TRAVELING ORDERS FOR A REMOTE TARGET. HE'LL GET HIS TRAVELING INSTRUCTIONS FROM BART COX WHO'S HOLDING A COLLECTION OF REMOTE SITES IN HIS SAFE. AT 10:30, HAL WILL BE AT HIS REMOTE SITE, AND AT THAT TIME WE'LL ENDEAVOR TO DESCRIBE WHERE HE'S AT.

SG11

IT'S 10:12, AND [REDACTED] AND I WERE DISCUSSING THE POSSIBILITY OF DESCRIBING AT THIS TIME WHILE HAL IS STILL OBTAINING HIS TRAVELING ORDERS WHAT KIND OF PLACE HE MIGHT ARRIVE AT 17 MINUTES FROM NOW WHEN HE GOES TO HIS REMOTE PLACE.

TELL ME ABOUT THE BENCH THAT YOU SAW.

I think that's probably just what he was moving past. It was just a standard work bench like you find in a lab--light wood more than waist high--in fact there are probably a bunch out in the hall here.

IF YOU PICTURE HIM AT THE BENCH, DO YOU SEE THAT BENCH INDOORS?

I assume that it is....then I start thinking of all similar kinds of things that would be outdoors. It's a...pretty....you just talk about the height. I sort of saw him leaning on one elbow and leaning against the bench.

BY BENCH YOU MEAN A LABORATORY BENCH OR WORK TABLE?

Um hum

IS THERE ANYTHING ON THE TABLE?

Not much. No.

YOU WANT TO TELL ME ABOUT IT?

A few papers, small things. No really large equipment.

Then when you asked me if he were inside, I flashed to him in the same kind of position but he's up on top a hill looking out over a landscape, and there's a guard rail along there, and he's kind of leaning against that.

So the idea of a structure that's a little higher than waist high with him leaning up against it--kind of common to both of them. let's stop for now.

THE TIME IS JUST ABOUT 10:30. SO WE'LL ASK [REDACTED] TO GIVE HER IMPRESSION OF WHERE HAL HAS GOTTEN TO.

My initial impression is very strange. First of all, I just saw a big, empty black box and thought maybe he was in the shielded room. Then I got a very clear image of him laughing and grinning, and I thought maybe the big darkness is a mirror that he's kind of looking in.

Trying to get a feeling for what he is doing--I just have him standing up kind of leaning with his back against something, hands in his pocket.

For a while the image all broke up as though I was looking through a prism or something. There were lots of Hals doing all different kinds of things.

Almost like looking at a movie projector that was shot through a kallidoscope.

There are images projected but they're all kind of piecemeal.

THAT'S WHAT YOUR IMAGES ARE DOING OR THAT'S WHAT YOU THINK HE'S SEEING.

I'm not sure which. I think he's involved in it. I don't know if he's running the show or just watching it.

IT INVOLVES CHANGING SCENES?

Now it's just all geometrics like triangles with lots of movement more than anything.

See a lot of patterns going by like maybe touring a modern art museum. Nothing I've done in fact would give me a comparable set of colors and shapes in such a short period of time.

I just got the idea to try and count the number of times he looks at this watch. I just lost track of how many times he's done it so far. I think twice so far.

IT'S 10:35 RIGHT NOW.

(phone rings, Russ goes to answer it)

DOES THAT BLACK BOX STILL FIGURE IN YOUR PICTURE?

No

I was just saying while you were out was that the only thing I could think in my experience would give a similar feeling is of walking through a museum looking at an art show--a lot of geometric forms and colors, different shapes.

Trying to get a feeling for how much activity he's involved in.

Initially, it was just the feeling that he was kind of relaxed, standing up and looking at something, but I haven't got anything else.

Just as I said that I saw him sitting down. That may have been my own memory of the fact that I always sit and look at art museums.

IF YOU LOOK AROUND YOU COULD YOU TRY TO DESCRIBE THE PLACE THAT HE'S AT?

Just got an image now of a square room. The floor seems to be checkerboard, black and white. Towards the center they kind of fade out. At the corners it seems a sharp pattern.

Looking toward one wall...there's something in the center...kind of circular. I don't know if it's a fountain or seats or both.

The wall I'm looking at is tall...there are high ceilings, was going to say a large door, but it's more as if there were just part of a wall...I guess that's the entrance area.

Just got an impression of a water fountain--one of the kind that's sticking to the wall rather than standing up on the floor.

There's marble around it.

It's kind of a...like arches...marble against the wall. There's a light fixture on the wall near the peak of the arch.

Steps leading down.

Trying to go down the steps I see a lot of things at once it's kind of a circular room down there, reddish colored rug on the floor.

Then I get the impression of something circular, maybe chairs in a circle--like a lounge.

IF HE LOOKS AT WHAT'S IN FRONT OF HIM, WHAT KIND OF SPACE DOES HE SEEM TO BE IN RIGHT NOW AT 11:20? IF HE LOOKS OFF, WHAT DOES HE SEE?

In the distance, it's very dark...blackness. Up close, it's rugs...kind of like going off in an alley way; bench-type chairs on either side.

Starting to get an impression--the feeling of the place. It's like kind of like a movie theatre or art museum. It's a tourist type place. A place you go to see and walk around in.

I don't think it's a business place.

IF YOU LOOK AT THE FLOOR WHERE HE IS NOW, WHAT DOES IT LOOK LIKE?

I don't know if it's tile or carpet tile. White, brown, gray, kind of an ornate dark on light pattern.

I seem to have a very small field of view. If you ask me to look at one thing I can guess about that, but I don't see the surroundings.

But it does seem to be a very busy place.

YOU THINK IT IS BUSY?

Not busy with activity, but architecturally busy.

IS THE ROOM ITSELF BRIGHTLY LIT?

It varies. I think he's downstairs now. He's moving around which I didn't expect. Maybe he's still upstairs and I'm moving around.

The upper part is more brightly lit than the lower part.

Lots of individual lamps around...on the ceiling and the walls.

DO YOU HAVE A FEELING FOR THE UPPER ROOM.

I think you enter on the upper level--it's big, open...central court...its inside though. Now I'm getting to remembering things.

Walking around over the church in that big courtyard, trying to get a relative feeling of size.

In this case I'd say maybe 40 x 40, maybe bigger. That's the upstairs.



just kind of scattered around against the wall.

ANY EXHIBITS?

I did initially. Now I get the feeling that that's not the purpose of the place. Just kind of there as ornaments.

I don't think it's really a museum.

ARE THERE WINDOWS?

Again I guess kind of ornamental windows, not clear glass, kind of foggy. See a lot of hatch marks, little panes.

Big windows, maybe big oval ones, with metal strips.

I don't think they're stained glass--they don't seem to be colored--just kind of foggy.

I just now got the impression of a very tall lamppost.

IS THE ROOM OF ANY PARTICULAR SYMMETRY?

Seems to be square.

SQUARE ROOM.

Yes

You enter on the western end==that's where the wall isn't. South is the side of the outside wall say facing the street or courtyard.

You enter from the west, and on the east is where the stairs go down.

Just now got the impression of kind of a vaulted ceiling or overhang or partition or something.

CAN YOU TELL ME ABOUT THAT?

Seems ornate, patterned, maybe tile, colored tiles.

Blue, gold, white. My eyes are starting to tear from keeping them closed.

Did you say 15 minutes or 20?

JUST BECAUSE HE LEAVES, IT DOESN'T MEAN YOU HAVE TO.

DOES THE ROOM HAVE ANY SPECIAL FEELING ABOUT IT?

The feeling I get on a small scale is like a train station depot. Something like Grand Central Station. It's not that busy, it's just that architecturally that's what it reminds me of.

I get the feeling of the purpose of the people.

I just had the impression before that before Hal left he kind of turned a complete circle and scanned the whole place once more.

I think to walk out, if he goes out on the western side and goes down a flight of stairs, turns left and goes down another flight and then he's out. Like long thin marble stairs, not a normal flight of stairs.

Outside there's a little brick--kind of a brick wall built in around the building.

SG11

██████████ IF YOU GO INSIDE, IS THERE ANYTHING IN THE BUILDING THAT REMINDS YOU OF THE LIGHT COLORED BENCH YOU SAW AT THE BEGINNING?

SAY, GO INTO THE MIDDLE OF YOUR ROOM AND LOOK AROUND, DO YOU SEE THAT LIGHT COLORED BENCH ANYWHERE?

No, it doesn't seem to fit in with the bench.

I don't see anything at all like a work bench around this place. I think really all I saw was transitory one of the places he went to

Then when you go downstairs from the upper level to the lower level, there's a bannister on the left and the stairs kind of curve around counter-clockwise.

It all seems so really clear and colorful--I'll be really curious as to...

CAN YOU TELL ME ABOUT THE COLORS?

About the stairs or.... Mostly I see the carpet downstairs--red with dark blue, red background, dark blue pattern on it.

YOU SAID IT HAD...YOU DESCRIBED BLACK AND WHITE TILES UPSTAIRS AND A CARPETED LOWER LEVEL.

Um hum

Not like any place I've ever been.

Makes me feel that I'm not remembering it, or making a composite of things I remember.

WOULD YOU LIKE TO TRY AND DRAW WHAT THE INSIDE OF THE ROOM LOOKS LIKE?

OK. My drawings are not usually very good.

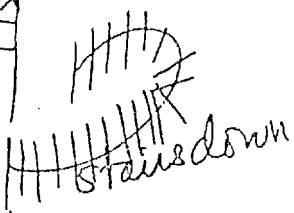
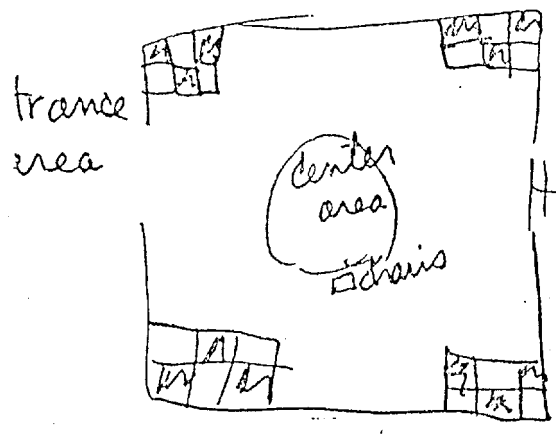
YOU SEEM READY FOR THE REST CURE.

get healthier as I go along.

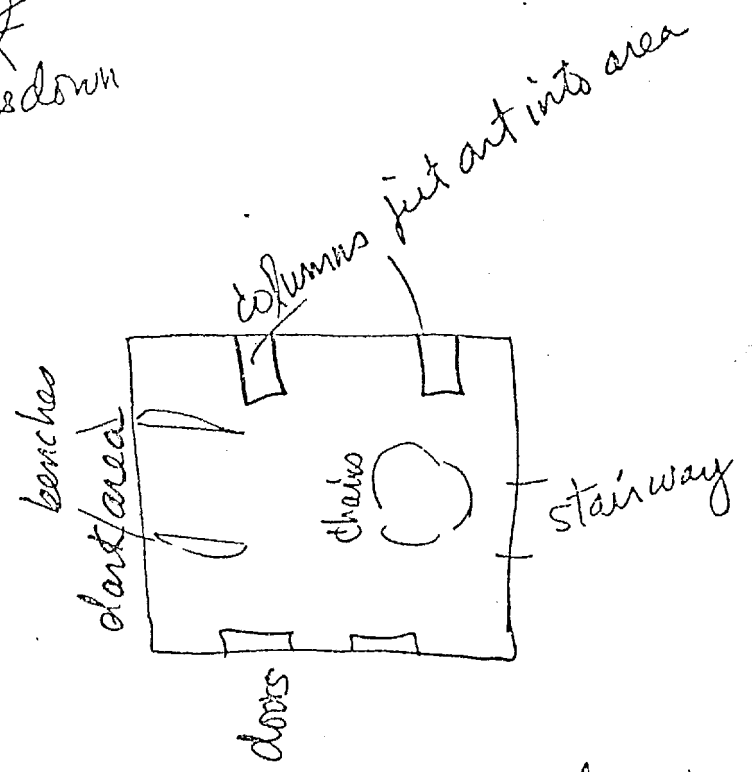
I think the picture is going to have much less detail than the description.

water canal

clerestory tile design fades off into center of area



external wall facing out



red carpet w  
dark black/blue design  
not modern  
not quite Persian

11/11/68  
[unclear]

Drawing made during RV #2

Analysis of Drawing

correct

correct orientation entrance & exit west & east  
stairs go around as shown, on outside  
presence of chairs in an area  
columns jutting into lower area  
downstairs was red with black/blue design

incorrect

checkerboard floor - was boards  
square columns - were round piles  
chairs downstairs, was outside ground  
red downstairs was marsh grass, not rug  
doors downstairs - don't exist

Hal leaning against light wood work bench more than waist high, at current time.

Nothing much on the table - a few papers, small things, no really large equipment.

He's outside, on a hill looking over landscape, leaning against guard rail.

Initial impression of shielded room, then Hal grinning.

Have him standing, leaning back, hands in pocket.

Image broke up like through a prism or Kallidoscope.

I think Hal's involved in the show - can't tell if he's running it or watching it.

All geometrics, triangles with lots of movement (no transition mentioned)

See patterns like touring an art museum

Hal has looked at watch for second time.

Hal still standing, relaxed, looking at something

Just saw him sit.

Square room, (he's at), checkerboard floor, black and white, shape at corners and fade in center

Something in center of room - fountain or seats or both, circular shape.

Tall wall, high ceilings; entrance area by a wall partition

Water fountain stuck to wall, not standing on floor.

Marble around it, light fixture on wall, near peak of marble arch.

Steps leading down

Circular room downstairs, reddish colored rug on the floor

Something circular - maybe chairs in a circle

Hal sees in the distance - blackness, rugs up close, like an alleyway, bench-type chairs on each side.

place is like a movie theatre or art museum; tourist type place; place you go to see and walk around in +

not a business place +

"floor under Hal" is ornate dark on light pattern

architecturally busy +

lighting varies, Hal downstairs now, he's moving around. ?

upper part more brightly lit than the lower +

lots of individual lamps around on ceiling and walls ?

entrance on upper level, open central court inside 40 x 40 + +

chairs scattered against the wall

initial feeling of exhibits; not the purpose of the place, just ornaments +

not really a museum +

ornamental windows, not clear glass, foggy, hatch marks, little panes

big windows, maybe oval, metal strips + - +

room is square

enter on west where wall is not, south faces street, stairs down on east + + +

vaulted ceiling, ornate, maybe tiles, blue, gold, white + - - - + -

like train station depot architecturally; like Grand Central

before Hal left he turned a complete circle and scanned the whole place once more +

to go out, he goes down a flight and turns left and goes down another and then he's out, like long thin marble stairs + +

Approved For Release 2000/08/07 : CIA-RDP96-00787R000700090008-0  
brick wall outside built in around the building

+  
the bench isn't here; that was where he was when I mentioned it



( + )

( - )

body position

object name

color

height object

time

objects absence (2)

objects (2)

outside location

location height

view

body position

shielding

body position

overview description-analogy

purpose

purpose

movement

transition away from Hal

ambience

body position

body position

room shape

design

design change

color

shape

environmental description (3)

object and location (2)

description substance

stairs location

object

shape area

area name

color

object (3)

color by Hal

objects (2) by Hal

ambience (5)

objects by Hal (2)

ambience

lighting (2)

Hal's location

relative positions (2)

area size

object position (2)

ambience (3)

windows (5)

windows (2)

windows

area shape

absolute directions (3)

room description (3)

color

color (2)

analogy - location

Hal's movements (2)

stairs relative position (2)

substance (2)

object present

track Hal from place to place

	(+)	(-)
+ body position, Hal	7	1
windows description, lighting	4	6
object size	1	0
colors	3	4
substance, material	0	3
- object name	4	11
object position	1	2
object absence	3	1
location - absolute	3	1
+ location - relative	6	1
presence of movement	1	0
area size	1	0
design of pattern	1	1
shapes	2	2
time	1	0
inside description	3	3
area name	0	1
outside description	1	0

analogies	1	1
+ ambience	10	0
purpose	1	1
- description relative to Hal	2	5
shielding	1	0
	<hr/>	<hr/>
	56	44

A suggested analysis procedure is the following:

If possible, calibrate a subject by identifying the categories of description he uses in RV, as well as those he gets significantly true or untrue.

Use as control a second person whose normal descriptions match that pattern. Have the control physically visit the site and describe it. (Included would most likely be a statement naming the type of site. (oceanside, building, park, etc.) and then a number of details.

Score the subject relative to that control.

In addition identify the outbound experimenter's movements and perceptions, and identify the subject's descriptions of these.

The control may be the outbound experimenter, if suitable.