

~~SECRET~~

cc 68
713
8001
7254

ORCON/NOT RELEASABLE TO FOREIGN NATIONALS

INSCOM

GRILL FLAME

PROGRAM

SESSION REPORT

copy 1 of 2

CLASSIFIED BY: DIRECTOR, DIA
REVIEW ON: JAN 2000
EXTENDED BY: DIRECTOR, DIA
REASON: 2-301c (3 & 6)

GRILL FLAME

~~SECRET~~

~~SECRET~~

22 Jan 80

SUMMARY ANALYSIS

REMOTE VIEWING (RV) SESSION CC68

1. (S) This report provides documentation of a remote viewing session conducted in compliance with a request for information on an intelligence target of high interest.
2. (S) At the time of the session the viewer was provided with the geographic coordinates of the target area. The viewer appeared very relaxed and seemed to be able to concentrate throughout the session. After the session he expressed confidence on the imagery reported.
3. (S) The protocol used for this session is detailed in the document, GRILL FLAME Protocol, AMSAA Applied Remote Viewing Protocol (S), undated.
4. (S) Following is a transcript of the viewer's impressions during the remote viewing session. At TAB A are drawings made by the viewer reference his impressions of the target site.
5. (S) See Report CC63 for data given by another viewer reference this target.

~~SECRET~~

~~SECRET~~

TRANSCRIPT

REMOTE VIEWING (RV) SESSION CC68

TIME

#43.5 This will be a remote viewing session (edited for security).

PAUSE

Ok #19.5 time to start the session today. We're going to work today on your first session on Project 8001.. That's the designation that was given to the task at hand. I want you to relax, concentrate and think about the target. The target is designated by the geographic coordinate:

SG1B

[REDACTED]

Relax and concentrate on that point. Let me read the coordinate again:

SG1B

[REDACTED]

Relax and focus your attention on that point and describe that area to me.

PAUSE

+03 #19.5 Impression of..uh..a light sandy hills...sand dunes or something. Looks like temporary building sitting on the sand dunes. They are up high on the back of the sand dunes. Got impression they are very close to the water. There's water behind me. I see what looks like..uh..two or three...I think it's two, very large white crosses and they're bent. Some kind of bent process. Black background. More like they're concave crosses and they're pointing out at me. I don't know. There's little squares make up these convex crosses. I see..uh..people standing in front of kind of electronics.

+06

#43.5 These people are standing in front of what?

#19.5 Electronics.

~~SECRET~~

~~SECRET~~

- #43.5 Describe these people to me?
- #19.5 They're wearing ..uh..tropical uniforms. They look European/Slavic. Uh..no markings on the uniform except..uh..some kind of it looks like they're..uh.. they are red tabs on the collars...like red bars on the collars. They're Slavic. Like..uh..Eastern European looking...it's tropical There's..uh.. get a.....get a strong flavor of some kind of.. strong flavor of Elint type equipment.
- #43.5 Tell me why you say that?
- +09 #19.5 I don't..uh..I sense some form of monitoring of some sort that..uh..it's not..uh..conventional.. not conventional calm, calm. Like..uh..it's radar type..uh..emission. I would say. Getting impression the crosses are antennae or something. Very strange looking.
- #43.5 What is your perspective right now #19.5?
- #19.5 I'm looking at..uh..I'm looking at racks of..uh.. racks of equipment. They're..uh..mostly..uh.. mostly high bread type receivers of some kind. Very strange. Too, too large. They're..uh..they're larger than the ones that we (mumbling) I still sense high frequencies (mumbling). For the 20-40 gegahurts (phonetic) ...I'm getting a strong impression of frequencies..uh..perhaps that
- #43.5 I want you to tell me about these people that you see #19.5. How many?
- +12 #19.5 There's..uh..very many..major..uh..major collection effort. Perhaps 250 people working now. I think they work in shifts.
- #43.5 You sense that there are 250 people working there?
- #19.5 Just this shift.
- #43.5 Just one shift.
- #19.5 Yeah. Working there now.
- #43.5 Working where #19.5?
- #19.5 In these...these..uh..they're black and white buildings. Get an impression of a long building with two legs. It's black and white but it's like

~~SECRET~~

~~SECRET~~

Approved For Release 2000/08/07 : CIA-RDP96-00768R000200020001-8

a temporary building and it's got..uh..these two very large..uh..light cross antennas across the edge. (Mumbling). Must be sand dunes.

- #43.5 Go inside that long building. Stand inside the front door and tell me what you see.
- +14 #19.5 See corridor. There's a hall..length of the building on the left side. There's doors to the right. There's two corridors to the right. There's ..uh..different kinds of equipment.
- #43.5 Tell me about the equipment.
- #19.5 Very large racks. Maybe 7 feet. It's..uh.. 5 cables...I don't know.
- #43.5 Are there any personnel in the area?
- #19.5 Yes. They're standing with..uh.. clip boards marking things down. Some kind of logs and they're ..uh..playing with the rack. Manipulating the racks. Many people at desks, tables with..uh.. with like some kind of recording paper. Like light sensitive recording paper. They're looking at peaks and things.
- #43.5 They're looking at what #19.5?
- #19.5 Peaks and things. I don't ...I don't understand that.
- #43.5 What do you mean, "They are looking at peaks?"
- #19.5 I don't know. That's what they're doing. Looking at peaks and things.
- #43.5 Describe what you mean by a peak.
- #19.5 Point.
- #43.5 Point. Ok.
- #19.5 I don't understand.
- #43.5 What seems to be confusing?
- #19.5 The peaks. See peaks. They're looking at peaks.
- #43.5 All right. Is there anything else unusual about these peaks?

Approved For Release 2000/08/07 : CIA-RDP96-00768R000200020001-8

~~SECRET~~

~~SECRET~~

- +17
- #19.5 The.....seems they're speaking two languages. I don't understand that, either. I hear two languages but I don't...I don't know why.
- #43.5 If you were there with them, speaking to them, what would they be talking about?
- PAUSE
- #19.5 Uh..technical thing. I don't think they would talk to me.
- #43.5 Tell me what languages these are that they're using.
- #19.5 One's like a..kind of South American language. It's a very quick, very quick tongue. Very rapid ..uh..the other is Slavic type thing (mumbling)
- #43.5 Ok. Very good. I want you to change your perspective now #19.5...change your perspective. I want you to leave this building, go outside and go up in the air and look down from a thousand feet. look down from a thousand feet and tell me about the area that you see around this building.
- PAUSE
- +21
- #19.5 It's like a small hill-top...a plateau and it's ..uh..it's up..uh..in the air on some sand dunes.. sandy cliffs..and there's..uh..appears to be the edge of water. There's..uh..the water is very green so it can't be very deep. There's rocks.
- #43.5 Is there anything else in the vicinity of this big building?
- #19.5 No. The roads...going from it...fence around it.
- #43.5 Where does the road lead to?
- #19.5 The road..uh..goes away from the water to the south. It's..uh..southwest I think. Feel like the sun is the side where the road is .
- #43.5 Follow that road, follow that road #19.5 from your present perspective, 1,000 feet, follow that road and tell me where it leads.

4
~~SECRET~~

~~SECRET~~

#19.5 Leads..a paved highway...appears to be a town there.
where it leaves the paved the highway.

#43.5 Ok. How large a town?

#19.5 Not large. Uh..I get..uh..getting distinct
impression of..uh..some kind of reed-like plant
that's grown...grown there. Like bamboo type plant or
something. But, it's harvested, for some reason.

PAUSE

#43.5 Tell me how I would go about finding this location
that you are talking about #19.5. Tell me how I
could go about finding this location.

PAUSE

#19.5 Could..uh..could see it with a boat, but you would
have to fly over it.

#43.5 Where are we in the world #19.5? Where is this
location?

#19.5 I don't know. I sense it's South America, or
something. This has a South American flavor about
it.

#43.5 Ok. Is there anything else you want to tell me
about the target?

#19.5 No.

#43.5 What is your overall impression of the target
area?

#19.5 Some kind of..uh..isolated collection site or..uh..
for..uh..ELINT, I would say. It's ..uh..near
water and it's..uh..some kind of South American
..uh..type area. It's my strongest impressions.

#43.5 Ok. Is there anything else you would like to add?

#19.5 No.

#43.5 Ok. Why don't you relax, relax and sit up and
draw some of these impressions that you have had,
ok.

~~SECRET~~

~~SECRET~~

#43.5 I'll put the tape on "pause" now so you can stretch.

Ok. We'll get going now. Why don't you go ahead and do your drawings.

#19.5 Ok. Page 1. I'll draw a picture of my very first scene. Looked like some kind of edge ...like sand dunes. They were coming down like this. I don't know how to describe it any other way. They looked like sandy cliffs. That's what they looked like. With some grass like you would see at a sea shore. Sticking up from this were two large things, like this. I don't know if I am going to do these justice or not, but, there were two very large white crosses here. They were..like..you know..concave or convex or whatever you call them. This part here is black. That's what, I guess, led me to think it was crosses, at first. May be crosses. They look like this. They're sticking up over the sand dunes. I get the impression like there was..there was lines running through this. The whole thing was made up of different plates, you know. Then, I started getting the feeling of antennae, for some reason. Some kind of an antenna. I get the feeling like there was..uh..some kind of a building behind it. I'm not sure of exactly how the building was back there, but, that's the impression I got.

#43.5 That building is behind that's what it looks like.

#19.5 It's behind there. Yeah. And..uh..that was it. That's my very first impression that I got and the first thing I saw was the white cross. The double white crosses. First I thought there was three and it was wavering and I saw two white crosses. I saw a square outline that the crosses were in and I got the impression of convex crosses because of the lines. Then, as I focused on this I started getting the impression it was all put together, like..with plates and that this was some kind of an antenna and there was a building behind it. It was right on the edge of some sand dunes. Up on a high plateau type thing looking down ...this being water down here. It was up very high, very high.

Page 2. I got the impression ..looking down this, now, was..uh..these..uh..sandy cliffs looked something like this.....the edge of the shore....this being water

~~SECRET~~

~~SECRET~~

#19.5 These two large antennae type things...like this why they'd be fixed antenna, I don't know. They may not be fixed, I don't know, they might be moveable. I get the impression they were fixed, for some reason. The building comes up like this. Like a long building sitting on a stand...two legged stand. 'course the whole thing is fenced. I'll just draw a fence. This whole thing is fenced. There was some kind of a road here, going up like this. (Mumbling) Hard pack, you know. Hard stand type road. (Mumbling) I got the impression that I was looking into the end of the building. I was looking at a long corridor. This kind of effect. Where these heavy black doors are there were two corridors that went down on the right. This was an outside wall. This is just a corridor. That's page 3.

Looking at it from the top. If I were to describeI'll put a dotted line down the middle of the page...looking at it from the top...get this sort of impression....like this was the corridor..... This may not be true. This is just the impression I got. This was a corridor. It didn't go all the way down where these doors were. There was just rooms on different sides.

#43.5 Where did you enter the building?

#19.5 Here. Which doesn't make any sense which is the opposite side of the road. I got the feeling that that's the way I entered the building, though.

#43.5 You're saying the road is over here, someplace.

#19.5 Yeah. The road is over here though. I may be backwards the way I look at the corridor.

#43.5 Where is the rooms with the racks of equipment?

#19.5 These rooms with the stars in them I felt were just packed with equipment. The rooms without the stars...the rooms with the circles in them...I felt were rooms with desks and people looking at some kind of....almost like a light sensitive paper type recording..something. And, by peaks. Let me explain what I mean by peaks. And, then I'm going to draw what I mean by peaks.

~~SECRET~~

~~SECRET~~

- #19.5 I kept seeing..uh..every time I kept trying to see what was on this paper I kept getting this kind of impression. You know. Like a paper full of peaks. I don't...like I drew on page 4. They just...some are small and some are large.
- #43.5 Ok. Did that mean anything to you?
- #19.5 Doesn't mean a dam thing to me. But..uh..and I got some kind of strong impression that this was some kind of facility for ELINT versus some form of communication type of signal. Like radars because of the..uh..I just sensed the very high frequency. I don't know why. I just did. Maybe it's..uh.. a whole collage of scene. Just the way it was layed out, and everything.
- Page 5. The only..uh..these guys were wearing uniforms, but, the..uh..like..uh..it's kind of a funny cut to the collar, ok. I don't know how to ...I don't think that is essentially correct. A funny cut to the collar and where it's black on this page 5, these were like..uh..where the black is these are red. Some kind of red tabs. I felt like this was rank, or something.
- #43.5 Were all the people wearing this type of uniform?
- #19.5 No. Some were wearing..you know..like shorts and light shirts. Got a very tropical feeling.
- #43.5 I guess I'm asking here, you said you sensed two languages, you know, and yet all the people were dressed similar.
- #19.5 Yes. They were all dressed similar.
- #43.5 Hum. Ok. I think that's an important point, though. Tell me your impressions of that road and where it went.
- #19.5 I had the feeling ...uh..this being the shore line and this being building like...this road went down here..up to a main highway. It went off this way. There was a small town or city right here. I got the feeling that all around this they were growing bamboo, or something. I don't know what the hell it is. Some kind of a...uh..I keep wanting to say bamboo, but, I can't imagine somebody deliberately growing bamboo for anything. That's the impression I got.

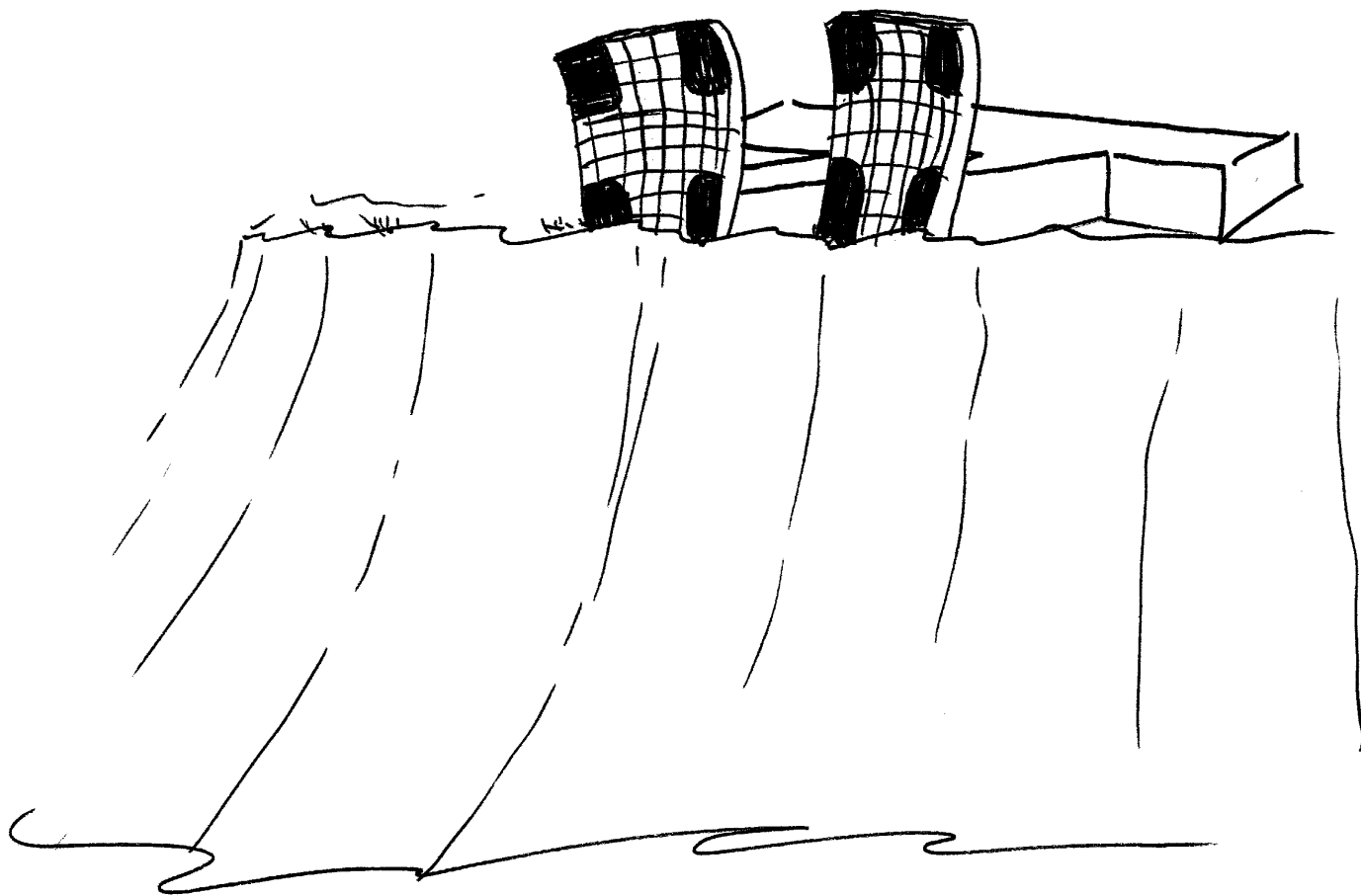
8
~~SECRET~~

~~SECRET~~

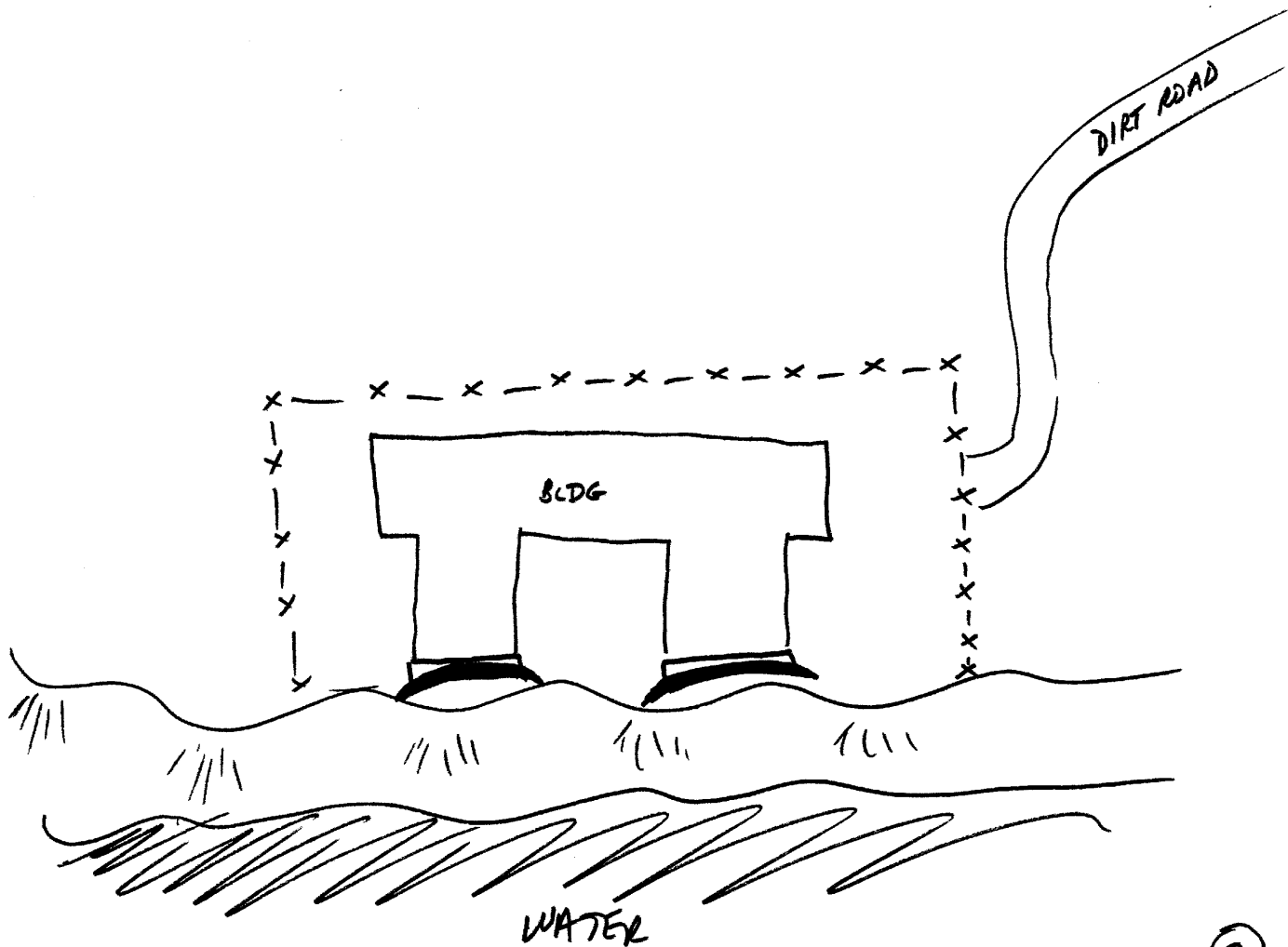
- #43.5 That's that weed like plant.
- #19.5 Yeah. And, the rest of it was just...slowly, graduating land going down towards the arrow and..uh..some very heavy jungle type..uh..some very heavy jungle type greenery down there.
- #43.5 Ok. asked you how you would locate this place?
- #19.5 I don't have any idea except by boat or by air.
- #43.5 Nothing stood out (interference by #19.5 talking also) when you were looking down a
- #19.5 No. Nothing stood out except these cliffs. These cliffs ...these cliffs are probably the most outstanding part of this thing. I got a feeling like it's only along in here...you got this kind of *height* and these kind of cliffs.
- #43.5 How high are these cliffs?
- #19.5 Uh.....I would say 400 feet, anyway.
- #43.5 Down to the water?
- #19.5 Yeah. Feeling they are very high, but they are sandy, you know.
- #43.5 Anything else you want to add?
- #19.5 No.
- #43.5 How do you feel about the session?
- #19.5 Feel great about the session. I don't remember starting it, so it's got to be a good one.
- #43.5 Ok. very good. That's it, then.

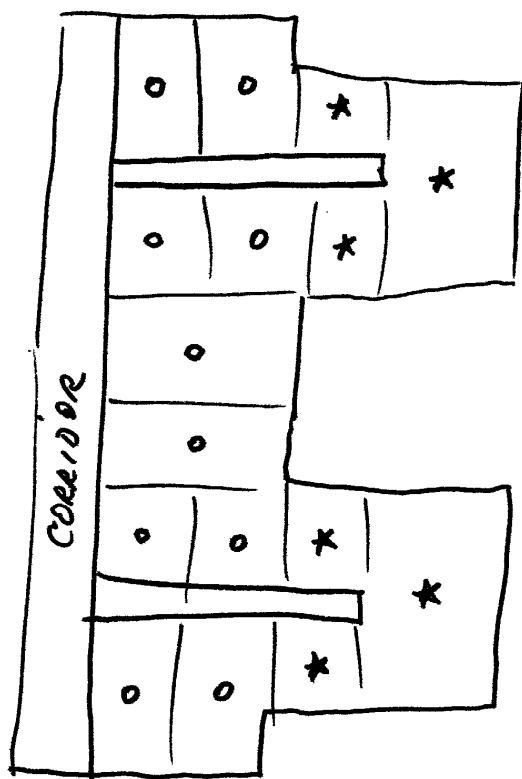
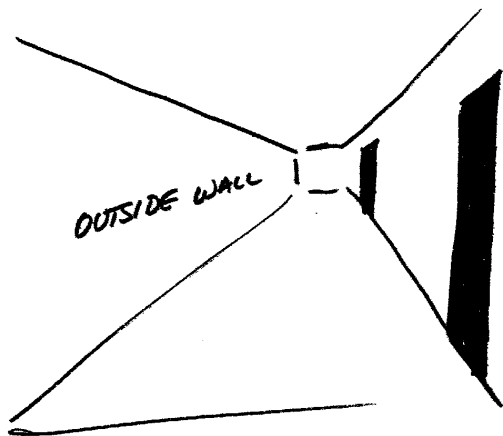
~~SECRET~~

Approved For Release 2000/08/07 : CIA-RDP96-00788R000200020001-8



Approved For Release 2000/08/07 : CIA-RDP96-00788R000200020001-8





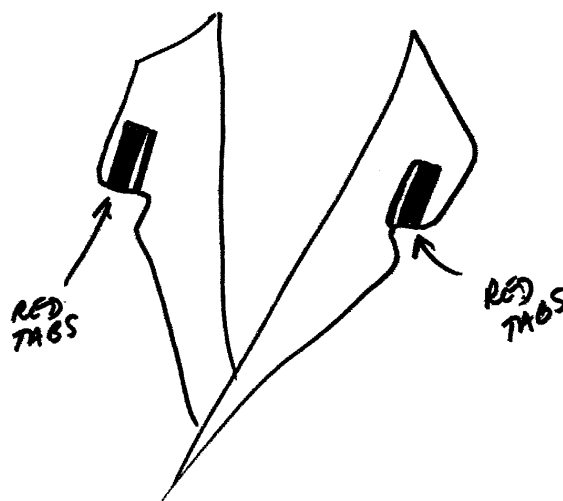
X
ENTERED

Approved For Release 2000/08/07 : CIA-RDP96-00788R000200020001-8



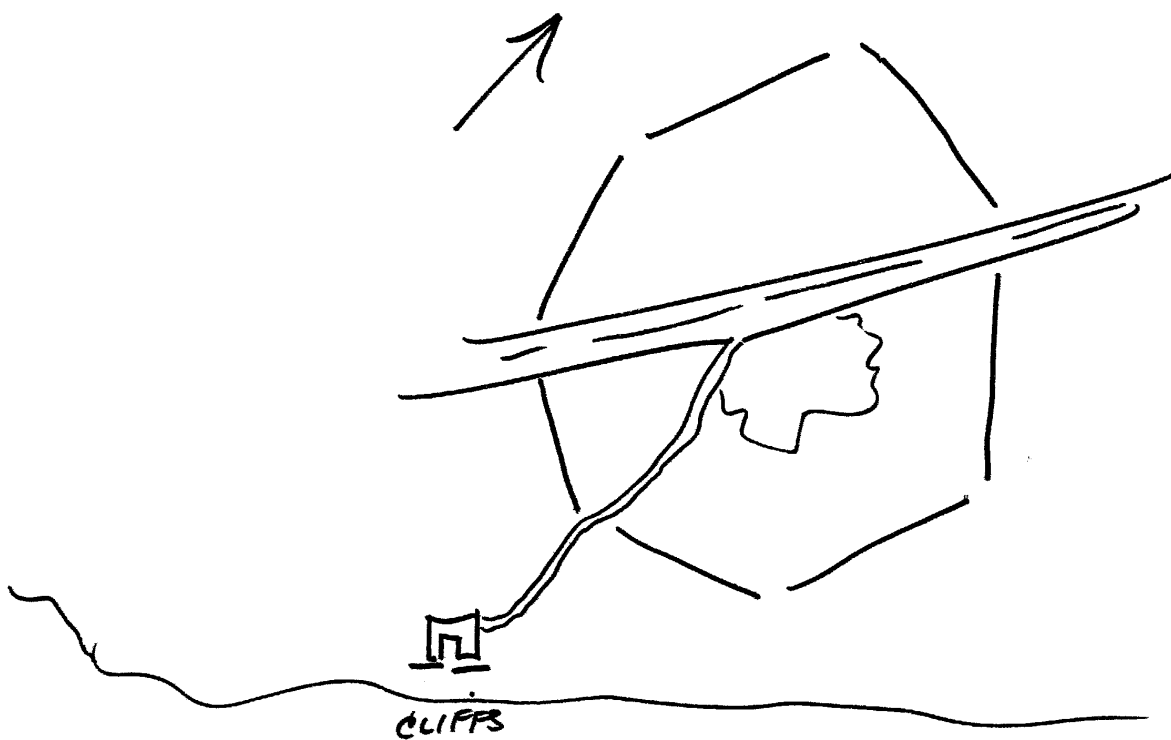
Approved For Release 2000/08/07 : CIA-RDP96-00788R000200020001-8

Approved For Release 2000/08/07 : CIA-RDP96-00788R000200020001-8



Approved For Release 2000/08/07 : CIA-RDP96-00788R000200020001-8

Approved For Release 2000/08/07 : CIA-RDP96-00788R000200020001-8



Approved For Release 2000/08/07 : CIA-RDP96-00788R000200020001-8

(6)