

~~SECRET~~

Approved For Release 2000/08/07 : CIA-RDP96-00788R000200200001-8

ORCON/NOT RELEASABLE TO FOREIGN NATIONALS

CCC 11
19-5

INSCOM

GRILL FLAME

PROGRAM

SESSION REPORT

CLASSIFIED BY: Director, DIA
REVIEW ON: March 2000
EXTENDED BY: Director, DIA
REASON: 2-301c (3 & 6)

GRILL FLAME

Approved For Release 2000/08/07 : CIA-RDP96-00788R000200200001-8

~~SECRET~~

~~SECRET~~

SUMMARY ANALYSIS

REMOTE VIEWING (RV) SESSION CCC11

1. (S) This report documents a remote viewing session conducted in compliance with a request for information on a target of interest.
2. (S) At the time of the session the remote viewer was provided the geographic coordinate of the target area. Ambient room noise did not appear to disturb the viewer and his level of concentration appeared to be good. The viewer felt that he had been able to concentrate and that the session had been successful.
3. (S) The protocol used for this session is detailed in the document GRILL FLAME Protocol, AMSAA Applied Remote Viewing Protocol (S), undated.
4. (S) Following is a transcript of the viewer's impressions during the remote viewing session. At TAB A are drawings made by the viewer reference his impressions of the target site.

~~SECRET~~

~~SECRET~~

TRANSCRIPT

REMOTE VIEWING SESSION CCC11

TIME

#43.5: This will be a remote viewing session for 5 March 1980. The time is 0900 hours.

PAUSE

It is time to start the session for today. Relax. Relax and concentrate. The target for today is designated by the coordinate:

SG1B

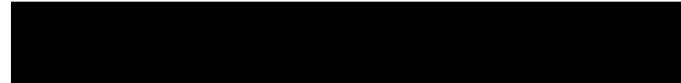


Relax. Relax and concentrate. And describe that area to me.

PAUSE

I'll read the coordinate again for you.

SG1B



Relax. Focus your attention on that area. Concentrate.

PAUSE

Describe the area to me.

PAUSE

+01 #19.5: Back at the table shape building. . but its a little bit different this time from . . last time. It has a small like and H shape to it. Where the legs kind of go all the way through. And its wider than it was the last time.

PAUSE

Also what appears to be things I saw that looked like fencing. Last time. Has sort of a bowed shape to it. Like just a section. A section of fence or . . gate to a fence standing by itself.

PAUSE

~~SECRET~~

~~SECRET~~

+04 #19.5: I see a rather peculiar form of road pattern on the ground. It looks like a pattern of curves off of curves. Sort of like all road intersections are a Y. Y shaped intersections.

PAUSE

And, . . . feel like I'm on fairly high ground.

PAUSE

I still got an impression that this complex is very large. And this particular building's only a . . . small part of it.

PAUSE

I see what apparently is a small airstrip of some sort. . . off to the side. I said its small. Its either small or the angle I'm looking at it is . . some distance. But its only a . . . just a very simple airstrip. Like its got one, one apron and that's all.

PAUSE

See the same circus tent pattern that I saw last time. It appears to be some kind of radial pattern. Its radial. Like spokes on a hub. Only this time they're. . . I'm seeing it sort of from a side angle. I'm getting a . . an impression of a . . . Oh, I don't know, like a droop. . . . droop in the spokes.

PAUSE

#43.5: Okay, I want you to focus your attention on the building. Tell me how that you get inside this building. Focus your attention on this building. Tell me how you would get inside it.

+07 #19.5: There's . . . a very, very simple door. Its . . nothing to it really. Its dark, sort of a dark gray on a light colored background. A white or an off-color white background. Its kind of down on the side of the building. That's the entry door.

#43.5: Okay, go through the entry door and tell me what you see.

PAUSE

#19.5: Black. Its a . . I get a sensation like I . . . I pass through a screen of some sort when I went through the door.

~~SECRET~~

~~SECRET~~

Approved For Release 2000/08/07 : CIA-RDP96-00788R000200200001-8

#19.5: There's a . . . a like a . . I want to say its a blackout curtain but that's not what it is. Its . . . like a curtain for light, keep light out. Its darker in the building. Sunlight is very bright here. The impression of very bright, warm sun. There's . . . just a straight hallway that goes to a T intersecting hallway.

#43.5: Okay, go to that T intersection. Go to the T intersection and tell me what you see.

PAUSE

#19.5: On the left section . . . there's . . short hallway that goes to the left again. The right section . . of the T, there's a . . appears to be a a door at the end. I kind of lose the right section for some reason. I think there's . . . maybe a set of swinging doors or something in the middle of a corridor and then there's another set of doors at the end of the corridor. I don't know what that is. It looks like . . looks like you go through swinging doors or something. . as you go down the corridor.

#43.5: I want you to move around in here. Move around inside the building and tell me what you feel about this building or what the function of this building is.

Move around so you get a feel for the building. Take your time.

PAUSE

+12 #19.5: I get a . . . its a . . . doesn't make sense. Its like a . . . a . . . its built alot like a tracking type center that I was in once. Or, it has a flavor of collection, like . . its not a SIGINT collection, its a . . more of a . . Oh . . . like a Downlink collection site. I would call it like a Downlink collection site from the . . . (not audible) type.

#43.5: Tell me what you okay. Tell me what made you say that. Why do you feel that way?

PAUSE

#19.5: I get a sensation that everything here is pointed up. I don't know that . . Let me break that down.

PAUSE

I get an impression that . . . that like everything is . . the interest lies within an angular

Approved For Release 2000/08/07 : CIA-RDP96-00788R000200200001-8

~~SECRET~~

~~SECRET~~

Approved For Release 2000/08/07 : CIA-RDP96-00788R000200200001-8

#19.5: Like a sort of an Ionospheric early warning system of some sort. Like you would look at a horizon but the very high part of the horizon. The angle would be like 20/22 degrees off of perpendicular to a flat surface on the earth. Looking North. Not quite North. I'd say North/Northeast. For some reason, it just Oh shit, pardon me.

#43.5: Relax.

PAUSE

#19.5: I see . . . I see this pattern like running down the globe from a very high altitude and its . . . the pattern is very much like the . . . what used to be the old Eastern test range type . . . pattern . . . when Canaveral was still . . . was way back launching rockets. The old Van Guards and things and . . .

#43.5: Um hm.

#19.5: Only this isn't part . . . This isn't part of the old Eastern test range, but its looking into the Eastern test range area. I don't . . . I don't . . . understand that. Its like diagonally off the the . . . the grid . . . the pattern. Its like a . . . peripheral collector of some sort.

#43.5: Okay. Relax. Relax. Don't try to figure everything out. Don't worry about that. All right. As you moved around, did you see any personnel in the area?

#19.5: Yeah. There's . . . a . . . military and there's para-military. Paramilitary are wearing what appear to be khaki uniforms but they're not complete. I get a feeling that they might be . . . civilians that are military associated. Wearing white lab coats. Strong. . . I'm getting a strong impression. Let me think about it a minute here.

PAUSE

There's . . . There's computer type people here. But I don't . . . I don't sense a very sophisticated computer effort. Its like first generation or something. Its not like ours. Its not as sophisticated. Its what I call a number, number cruncher. Lot of . . . I'm just getting a feel for a lot of open/shut type arm mechanical gates.

#43.5: Okay. What's the role of the military people that are there?

Approved For Release 2000/08/07 : CIA-RDP96-00788R000200200001-8

~~SECRET~~

~~SECRET~~

#19.5: Political. I don't know why I said that, but it's political. That's...I guess first word association to the question. Not something to do with politics Trade-off of some sort. Cover. I think the military are...the military are there for another reason but ...this facility operates under that cover.

#43.5: Ok. Is there anything else that attracts your attention inside this building?

PAUSE

+20 #19.5: There's a shielded room. Some kind of a shielded room in the building. I see gray, gray metallic walls. I get a strong impression of power output. But, it's not electrical power output. It's ... someother frequency that requires shielding. I don't know what it is. It's a grid shielding. Like cross-hatch wiring, ^{or} across that^h cabling or something .

#43.5: Ok. I want you to move outside the building now. Move outside the building...move a short distance away from the building and turn around and look back at the building, and tell me how you feel about the size of this building.

#19.5: Trying to...scale it against the fence. Getting impression of...perhaps 220 feet long by maybe 80 feet wide. Fairly large but not anything excessive, really.

#43.5: How tall is this building?

#19.5: Taller inside than outside. One story outside... story and a half inside.

#43.5: Ok. One last thing #19.5. I want you to change your perspective. I want you to change your perspective. Go up in the air 500 feet and look down at this area and tell me how it looks from that perspective.

#19.5: Cluttered. Get the impression I'm in a city.

#43.5: Ok. Looking down from 500 feet...maintain that perspective I want you to look away from this building over to the east about 200 meters, and tell me what you see.

PAUSE

~~SECRET~~

~~SECRET~~

#19.5: Some kind of...like some kind of storage tanks. Not...not your big oil storage or anything, but ...smaller tanks. Get a feeling that there is... if I got too far east I'll be in the water. Weird feeling. Tanks look like they're laying on their sides in a row and they're inside frame squares. It's like if you drew a square around them.

#43.5: Ok. Is there anything else you would like to add #19.5?

#19.5: There's...I think this is either on the edge or inside the edge of a city. It's extremely cluttered. I'm just overwhelmed with all the things that are around the building. There's just roof tops and exhaust vents and, and...tower type chimneys and smoke coming from forms of industrial type buildings, I guess. Uh...roads, parked vehicles. Just a conglomerate of things. Poles, wires. I just get that impression.

#43.5: Ok. I have no further questions #19.5. Is there anything else you want to say?

#19.5: No.

#43.5: Ok. I want you to relax now. Relax. We'll have the analyst come on in if he wants to, and we'll go over this and make some drawings. Ok? I'll put this thing on hold for now.

Ok #19.5. Why don't you go ahead and start off with number 1, there.

#19.5: Ok. On page 1. I feel...the shape of the building I feel like it's changed a little bit. At least I get the impression it has to me. Maybe I'm getting a clear picture what the building looks like. So on page 1, I'll do the building again, and there's... there's a difference in the...what I called fencing before...I got a different impression for what I called fencing before. It was really a strange change. Maybe it's just a gestaltic change in the building, and I got the impression that the...the door was like here. That's not really the scale, I don't think, but that's the general impression of the way the building changed. Back here where the arrow is...I had drawn fence. So I'll call it old fence location. I'll show you on dotted lines what appears to be now, to me, is this kind of design. This being ground. Sort of like a...a gate standing

~~SECRET~~

~~SECRET~~

there by itself, and...

#07: That's an elevator here. Is that correct?

#19.5: Uh, this is looking at it from the side. Side view. It's that kind of thing. Just looks like a...a gate standing there. I had gotten a piece of that before and assumed it to be fencing. That was probably an erroneous thought. There might be fencing there but...I, I was getting that impression. Let me put a north arrow on this too. Feeling like this was north. Not immediately off the top of the page for angling off to the left, I think that's... by virtue of the way we draw on these papers is probably why north is always there, but...going inside the building I got the impression that you went through a door and indoor corridor that went down into a T intersection, and there's...there's something, ok, something across the front of the door. It's either to drop the light level... deliberately drop the light level or it's a blackout curtain type thing right immediately inside of the door. And the T intersection...this one goes to the right and there's like a...sort of double doors... swinging doors, and then it goes on down a little ways. About the same distance to a door, and this way goes down a little ways and makes a left like this to a door. When I was down in this double door area...down in this area I...all of a sudden I had an impression that...I have to call an impression that there was...like an old stype computer type system back up in here.

#07: That's the area circled with the dash lines.

#19.5: Yeah. Right. I'll right in here. These are corridors and this is old style computer system. Somewhere in this area. I saw the...

Page 3. I saw that circular radio pattern, and this time I got an impression...like it was...if I can do this justice here...like I was looking at...at bow shapes in it Can you see that? Does that make any sense to you? You know what I'm talking about. Like, like drooping wires, ok with poles or something. These are heavier when they're drooping wire. And... this might be where I'm getting....I'm just getting a really strong impression of...like...like this thing is...if this was an exact perpendicular line right, but the...the face orientation of this thing

~~SECRET~~

~~SECRET~~

would be 20 to 22 degrees north northeast, ok.
You know...the plain.

#07: Do you think this is an antenna?

#19.5: I don't...I don't know if it's an antenna or if it's a...support for something under it. I don't know if this is a clothes line. You know. I'm just saying I get a real strong impression that there's some form of...of collection being done but it's not a SIGINT sight. It's different kind of collection.

#07: This thing you've drawn here...was this result of awareness or was this result of imagery that you were looking at? Do you have a feeling about this ... it was other than imagery.....because you said you had an impression a moment ago and I.....

#19.5: Well, my impressions are sort of a mixture of both. Sometimes they're stronger on the imagery side and sometimes they're not imagery at all. It's just... words that come into my mind that I have to say.

#07: This concept...conceptual here or is....

#19.5: This is a concept is what I'm trying to say. This I feel the pattern, ok. These support things with drooping lines I would say exist somewhere on that target. The impression I get is that the plain or the face...the facial plain of this is 20 to 20 degrees 20 to 22 degrees off perpendicular to the earth's face, ok.

When I went up in the air, over the target I got... I got an impression of looking over the horizon of globe, ok. I got the impression that we're somewhere here.....this being the equator, and that there's a... what they call the eastern test range that comes down like this across the equator. This is the old eastern test range, ok. It doesn't exist anymore. This dates back to when Canaveral was open and operating and everything, and that this point on the globe is looking through the eastern test range. This being...target. It's actually looking through the eastern test range. Do you see what I'm saying? Some form of peripheral collection of some sort.

Page 5. Saw a room. Shielded room and it had...the shielding was...like...the shielding was like wires. Just all woven together like this, and they had about

~~SECRET~~

~~SECRET~~

the same gauge as...that would be a cross section.

#07: Did you get a feel for the spacing of...for that grid?

#19.5: These...these...yeah. Spacing would be about that, and they were bronze colored. That might be overlay, ok. Room was fairly large, and it was gray. All I had seen was a corner with a shielding in it. I sensed alot of power in this room, and it's not electrical power. It's like output power of some other frequency. Possibly telemetric type output. I don't know. That sort of thing.

#07: I missed part of it. Did he have anything to draw? I heard you mention something ...to look down there 200 meters east.....

#19.5: Oh. Page 6. Yeah. This is the building over here, and you went to the east 200 meters. I got an impression of some kind of storage tanks layed end to end on their sides, and these were like in boxes or on boxes or in frames of some sort. Might be fencing or something...something defined as square around them, and from those all the way across here...and down in here I got alot of poles and wires. I got alot of parking here. Parking here with vehicles. I got.....commercial and military mixed...roof tops over here, and I had a feeling if I went too far in this direction, somewhere in here was water. All water. If I went too far to the east I would fall in the water.

#07: I have no further questions.

#43.5: Ok. Early in the session #19.5, you talked about the road pattern in the area.

#19.5: Oh, yeah. That's right. I don't know what made me say anything about the road...I got...I got this impression...like...everything about the road...the patterns of the road were like Ys. I'm not really sure that these are roads. Just like...all the interconnecting roads are Ys. And I mentioned it because it was...it was really eye-appealing. It might have something to do with the target. Just call it ground patterns.

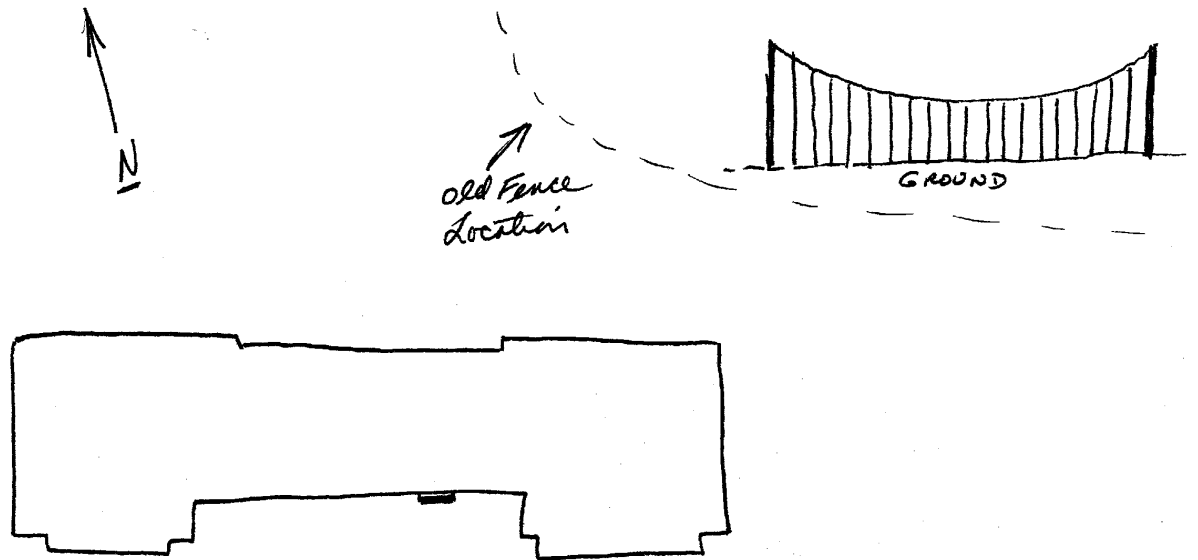
#43.5: In relationship to all this where was the small airfield?

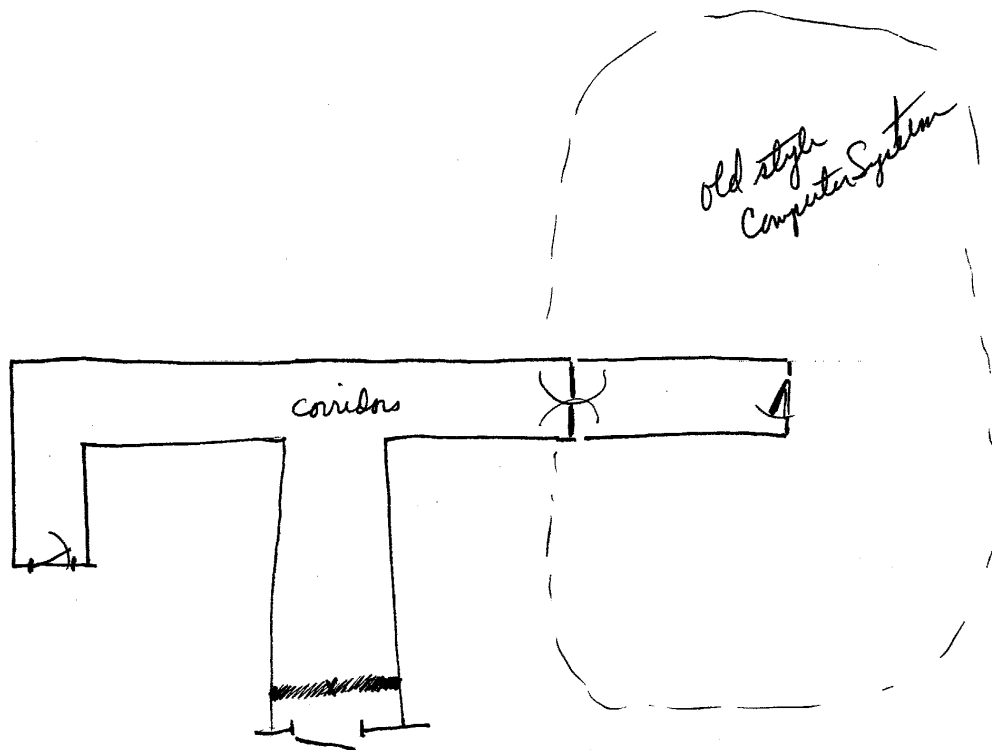
~~SECRET~~

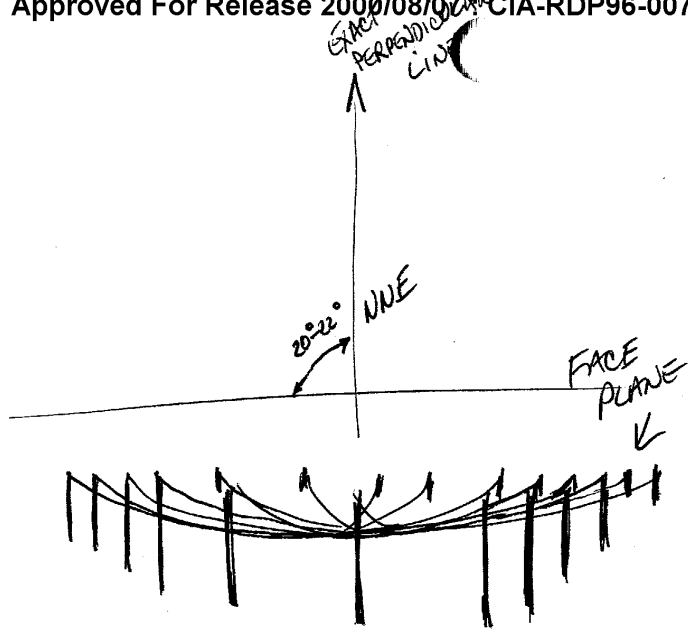
~~SECRET~~

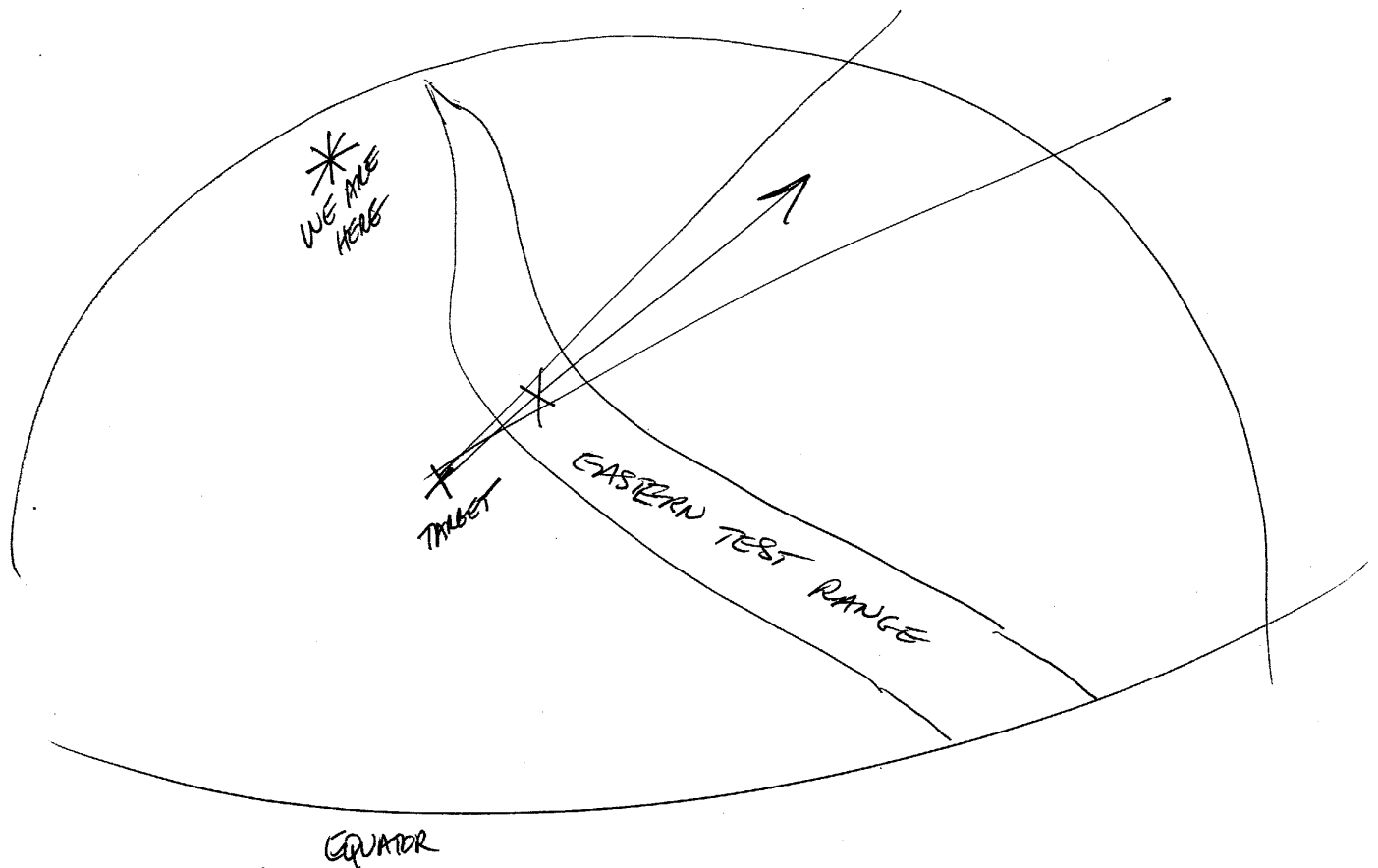
- #19.5: Small airfield was....on page 6 was back in this direction, and it was just a simple strip with a taxi. This would be...all my orientation is the same as the first page. Guess that's it unless you got anymore questions.
- #43.5: You got anymore on the personnel? Do you want to ask any questions on the personnel? He saw the military in paramilitary.
- #19.5: Well I call them paramilitary because they're wearing less than a uniform, but very much like a uniform. I just got a real strong feeling that it was like a cover. Like the military was.....a political cover, you know. Like we would allow some of these military into our country and we wouldn't really know that their paramilitary types were doing something other than what we allowed the military (not audible) to do. That sort of thing.
- #07: Did you feel the military types were doing anything inside that building now?
- #19.5: Oh, they were helping, yes. Most surely.
- #07: You say they were working on the same thing (not audible).
- #19.5: Yeah. Right. Exactly.
- #07: Not audible.
- #19.5: Nothing bothered me.
- #43.5: Yeah. It didn't seem to. There was an awful lot of footsteps and walking around, but didn't seem to be bothering you too much.
- #19.5: Didn't hear them.
- #43.5: Ok. Analyst do you have any questions?
- #07: Don't have any.
- #43.5: Very good. That'll be it then.

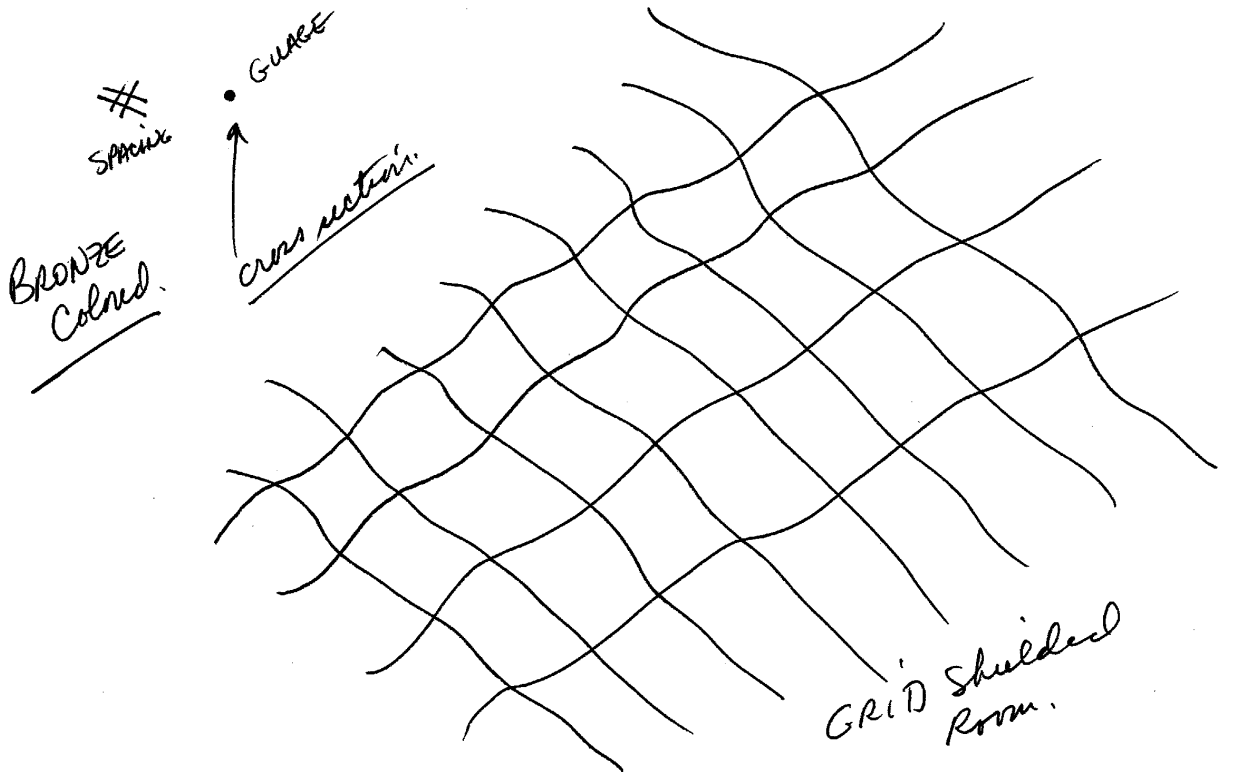
~~SECRET~~









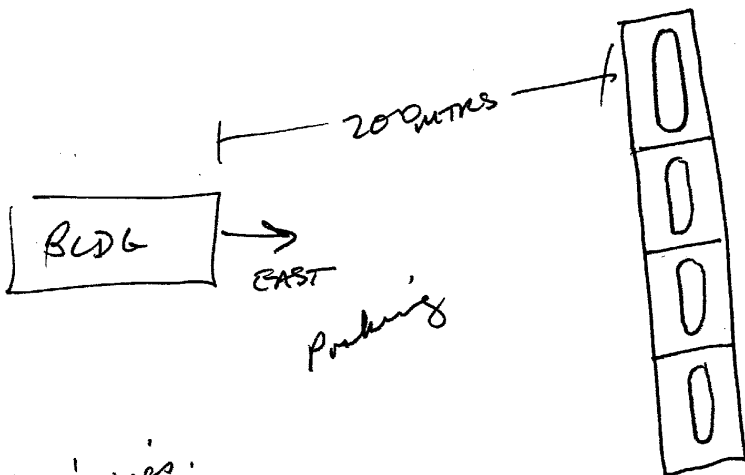


roof

Parking

↑ N.

WATER

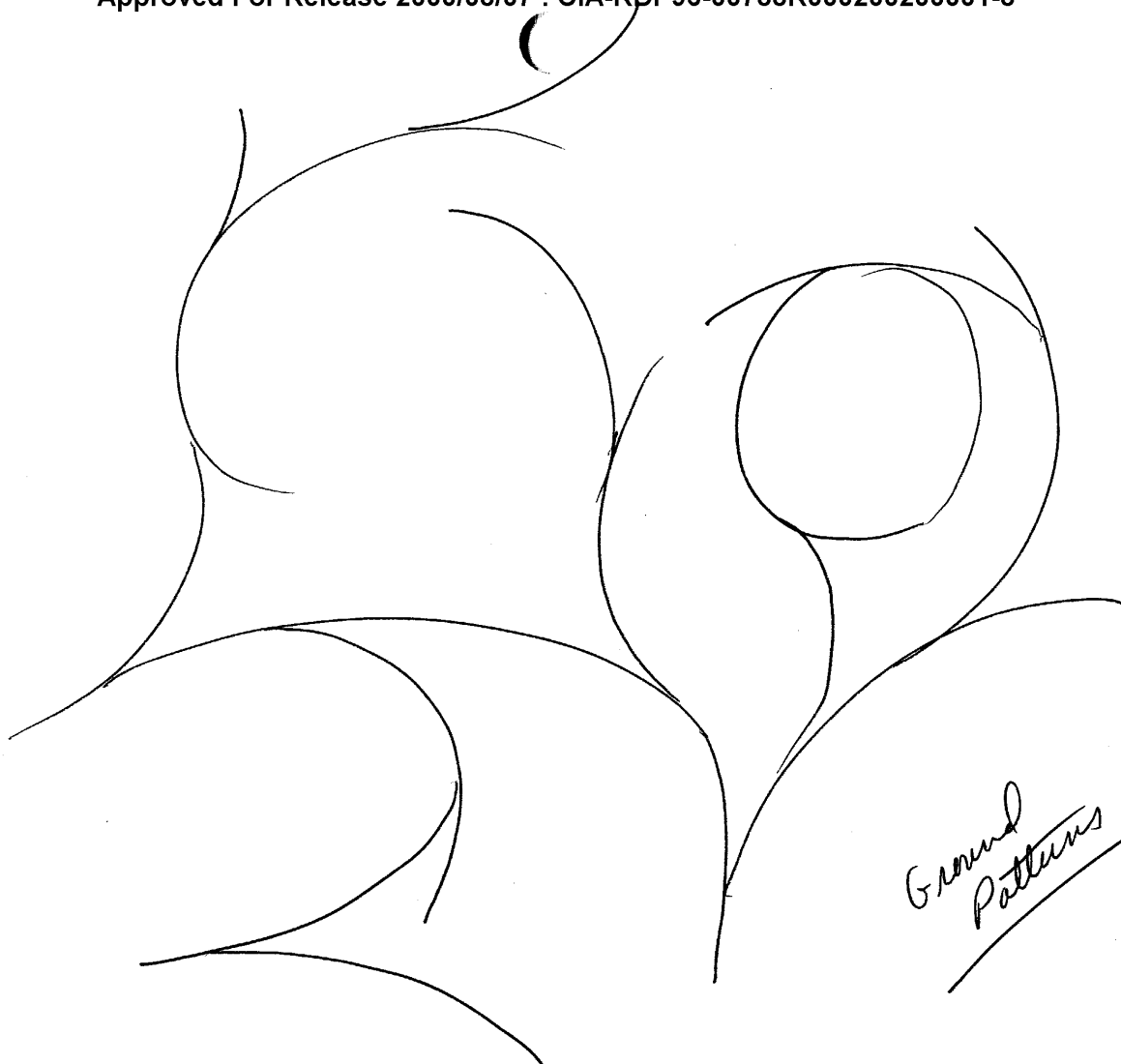


Parking

Poles & wires.

↘ Small air field.

Approved For Release 2000/08/07 : CIA-RDP96-00788R000200200001-8



Ground
Patterns

Approved For Release 2000/08/07 : CIA-RDP96-00788R000200200001-8