

**SECRET**

INSCOM  
GRILL FLAME  
PROGRAM

SESSION REPORT

CLASSIFIED BY:MSG,DAMI-ISH  
DATED: 051630ZJUL78  
NOT RELEASABLE TO FOREIGN NATIONALS REVIEW ON: Sep 2000  
**SECRET**  
ORCON  
**GRILL FLAME**  
*copy 1 of 2 copies*

**SECRET**

SUMMARY ANALYSIS

REMOTE VIEWING (RV) SESSION D-45

1. (S/NOFORN) This report documents a remote viewing session conducted in compliance with a request for information.
2. (S/NOFORN) The remote viewer's impressions of the target are provided as raw intelligence data, and, as such, have not been subjected to any intermediate analysis, evaluation or collation. Interpretation and use of the information provided is the responsibility of the requestor.
3. (S/NOFORN) The protocol used for this session is detailed in the document Grill Flame Protocol, AMSAA Applied Remote Viewing Protocol (S), undated.
4. (S/NOFORN) Following is a transcript of the viewer's impressions during the remote viewing session. At TAB A are drawings made by the remote viewer reference his impressions of the target site. At TAB B is target cuing information provided the remote viewer.

NOT RELEASABLE TO FOREIGN NATIONALS

**SECRET**  
ORCON

**SECRET**

## TRANSCRIPT

REMOTE VIEWING (RV) SESSION D-45

TIME

#14: This will be a remote viewing session for 12 September 1980. Mission time is 1400 hours.

SG1A

All right, #36. The time is now 1400 hours. Your mission for today is to go [REDACTED] I want you to go to the gate with the lock and chain. When you are there, please let me know.

+02

#36: I, uh.....I approached it from the lock side...It's right here in front of me... I, when I first hit it, it, uh... different time frame, and...it was wide open...(mumble)...

#14: Is it open at this time?

#36: I don't know what time I got here, but I saw it open and... I started lookin' for the lock and when I found the lock it was moved...

#14: Very briefly, is there anything more that you can tell us about this lock and the chain?...

#36: Whatever.....The k-, the, the key on that damn lock... appears to be silver colored rather than brass. I distinctly saw... Here's two of the letters on the key, it says, uh... I think it was a JL...whatever that's worth...was a...steel or aluminum color rather brass.

#14: Can you describe the key? Take a very good close look at it... Keep a picture of this key in your mind. I will ask you to draw a picture of it later. Okay, at this time, I now want you to face north, north looking towards the building, the building with a down staircase and the guard at a desk on the inside. I want you to face that direction .... Okay.

#36: (Mumble).

#14: I want you to move very slowly past the gate and towards the building.

#36: Okay, I'll go back to the gate. I'm already at the building.

#14: Okay, I want you to move-

#36: Gonna go back...

**SECRET**

~~SECRET~~

- #14: As-
- #36: Okay, I got the gate...
- #14: Okay, while you're at the gate do you perceive any type of sign on the gate? Or immediately to the left or the right of this gate?
- #36: To the left....(mumble) seem to be a smooth area towards the top of this gate and I was tryin' to see if anything was written on it. There's something...oh, I don't know, give or take a few inches, 18 inches high and...28,30 inches long to the left... I can't read it.
- #14: Are there any colors associated with this sign?
- #36: I was getting a strong, uh...a strong, uh...sensation of, uh, white. And there was some red. The white could be... could be, uh...very reflective...seem bright, that's why I call it white...and some red.
- #14: Okay. Now at this time I want you from your position at the gate to move very slowly towards the building that we're interested in. As you're moving, I want you to look to your left. Tell me what you see on your left.
- #36: I got the flashlight tunnel vision again today. But there seems to be some vegetation, and white toned...decorative, uh...about a meter...I don't see anything to be sure that size of it.
- #14: Can you see anything beyond this vegetation?
- #36: Oh, yeah, I see the top of some (mumble). I see a few big trees maybe...maybe 30 feet or so.
- #14: Okay, very good. I want you to continue, continue on your way to the front of this building. To the entrance. I want you to go inside, and I want you to go to the desk inside. What do you see at the desk?
- #36: I see a person, uh...
- #14: Describe this person to me.
- #36: Fortyish, forty, uh...forties, Asian...male...light toned, bright shirt, short sleeve...wait a minute...short sleeve. I'm seeing a...a red stripe, narrow, a quarter inch wide on dark fabric here somewhere. I think it's part of a uniform, it's...something is draped over a chair over there. Like it's...
- #14: Okay.
- #36: Narrow red piping.

~~SECRET~~

~~SECRET~~

- #14: As you came through the entrance, was this desk, is this desk located to the left or to your right?
- #36: Oh, I see it. It's, uh, on my left, and there's a door somewhere behind it. Just beyond that a few feet is a... further indentation to the left. I don't know whether it's a hallway or just a...setback in the wall. It appears to be on my left.
- #14: Very good. Before we move on any further I want you to take a close look at this individual sitting at the desk. Do you perceive any arms associated with him or this position?
- #36: With him, on this position....
- #14: Does this-
- +15 #36: Yes, I feel a strong feeling of, uh...security. I can't get beyond this place without, uh...I couldn't...I couldn't just barge by this place. He's looking for a...the weapon I saw on the table, uh, desk before, but I don't see it. But I feel a strong...sense of restriction, like this position is capable of stopping someone. But I don't see any weapons right now.... Dark trousers, that's what it is.
- #14: Okay. at this time- and I want to reinforce you, you're doing very well. At this time, I want you to move on, and move left to that indentation that you described beyond the desk. To your left, I want you to move to that point and go down what you call the indentation, describing as you go.....
- #36: Ahh, I was just, I'm not seeing anything. I...came up against...a conglomerate blank...can't explain. I...got an extremely high frequency...uhh, p-p-p-piercing sound in my ears... I saw...blue color with decorative edges. I saw a pentagon shape in the middle of it. This was over, over, above my head...I guess about 45 degree up, uh, above me. Wanna try again and see if I can see something in this... something tangible I can get my hands on.....
- +20 Feels like a....somewhere I'm seeing...somewhere I'm seeing a...little...what do I say? Separation, uh...a little gate in it, that doesn't restrict anything, except discourages passage beyond that point. I can go beyond that point then. I can't see all the way down through there, but, ah...let me see I just went past it, just turned left and there's a door on my right.
- #14: I want you to go through this door and tell me what your impressions are.
- #36: Mostly very bright...cream, tan color...

~~SECRET~~

~~SECRET~~

#14: You're doing very good now.

#36: It's high windows here...

#14: You're doing very well. I want you to describe everything you see here, and now you can tell me about the windows. Where are these windows located?

#36: I don't know, I just saw them above me, above my head, but higher than...real high windows, I...there's bars...bars on this window anyway. They go straight through the door... straight through the door. There's about a 30 inch indentation in the wall to my right...shaped like a kitchen cabinet... It's dark colored...electric wires... Ah... I think it's some kind of a...I feel that it's some kind of communications thing here, uh...

#14: You're doing great. You're doing very well. Please continue just as you're going.

#36: It's not a very big room...

#14: Look to your left. Tell me what you see on your left.

+25 #36: I saw...I said table, but then I see something that looks like a...a bunk, or a couch or something... Looks like a... a brown couch like thing I think...table here somewhere. Oh, well, I guess near the door. Oh, there's a closet here, uh... It's kind of specialized, it...

#14: I want you now, as you're looking to your left to look across the floor. Pay attention to the floor. Describe what is in the middle of the floor...

#36: Ah....I'm seeing a lot of stuff that reminds me of glass, you know, that translucent, airy, reflective color that you can't make up your mind if it's silver or glass. Flicker imagery tells me it's that quality. I thought the... also thought there was...something extending down from the overhead as well. I thought it was some kind of a work station of some kind, but I can't dope it out. And the closet to my left it was, it didn't seem like it was for, for coats. Seemed to have vertical slots in it, like...I don't know. It's not for coats.

#14: Okay. I want you to walk in to the closet.

#36: Hell, I can't... It's, it's a door with storage bins and shelves and things, no coat hanger.

#14: Can you describe the types of things that are on the shelves?

#36: Some of 'em are tubular things...small, uh, small parts of some kind. Seem like...seem like one or two bins have got

~~SECRET~~

~~SECRET~~

+30

#36: something, they're like boards, uh, like...like briefing boards, or, uh, chart paper or something. Shouldn't be folded....I'm seeing what looks like a fancy ornate fireplace where somewhere...a stove...

#14: Okay. You're doing absolutely super. At this time I want you to move to the north side of this building. I want you to move to the north side of this building. I want you to look out through the window on the north side and describe what you see.

#36: I see a rather...off at some distance there the darn thing seems to be, uh...a building that's taller than it is wide. I think it's, uh...from this angle it looks like the top of it is, uh, is flat, but it, it could have a kind of a peaked roof inside of there. The, uh, facade around the top. I get the feeling I'm looking through a...I got a very weak translucent image of a...like looking through a small park. I see a few...few trees, and a...walkway and...something on my right that for some reason is reminding me of a horse. I don't see anything that...I had that kind of feeling.

#14: Okay-

#36: Street over there to my left about, uh...a couple hundred feet, it goes away from me down that way.

#14: How far away from you is the building that you described?

#36: Ohh, it's hard to tell distance, but I'd say, uh, just be a good, it's over three blocks. Maybe...maybe a little more than that... Off to the left of me...what seem to be dull, haze, I don't understand that. I get the feeling of a... even more narrow spire or a tower like, uh, structure. Not an antenna tower, but like a building tower. That would be to the left side of the street that's on my left. And it's way over there. Oh, there's buildings on this street over here, I forgot to tell you that... Over there, further to the right I can see, seems like the buildings are... bigger on the other side of that street on my right than it is on the side of the street near me. Between those two streets I can see things there, but they...between the street on my right and the street on my left, on street ahead of me here I see...things that have less vertical development. Whole thing seems kind of low key in that area. Not very interesting to me for some reason. The buildings on the other side of the street to my right, uh...I don't know, they kind of seem like commercial buildings. big, uh, big, uh, big...I don't know, three stories high or so.

#14: Okay. Let's- you've done very well. Extremely well. At this time, remaining at your position at the window, I want you to turn around. Turn around, facing south, remaining at your location. Face the south and describe the room that you are in.....

~~SECRET~~

~~SECRET~~

+35

- #36: I don't know, I think I'm...up off the ground, I, I must be. I'm not on the ground floor, I...I'm getting...this doesn't look like a room. It looks like a...big hallway. It's big enough, it's got some...pretty nice old furniture in it... And I see light way over there. I think I can see clean to the other side of the...clean to the other side of the building. Either that or there's a skylight over that, down there somewhere. I sense it. This hallway must be shaped like a cross, because I, I can see openings about a third or so of the way down it open to my left and my right.
- #14: Okay. I want you to focus on the walls. Do you see anything on the walls that stands out?.....
- #36: I don't know, I've got a...a linear pattern.
- #14: Tell me about this linear pattern.
- #36: Ah, it's very faint. Coming and going on it moves towards me and then it moves away from me...kind of dark in here you know.
- #14: Focus-
- #36: Just a vertical linear pattern.
- #14: Focus on this linear pattern.
- #36: Got my eyes on the pattern, and that horizontal linear pattern about waist high. Could be a wainscoting or something. Some kind of horizontal pattern and...got that damn high frequency whistle again.
- #14: Do you associate a color with this horizontal pattern?
- #36: Hard seein' anything, it's the same color as the...same color as the vertical pattern.
- #14: Tell me more about this vertical pattern.
- #36: Ah, it's...I'm sorry, I forgot. What'd you want to know?
- #14: I want to know more about the vertical pattern.
- #36: Oh, yeah...okay... Uh, it's very subdued light in here. There's this, on my right there appears to be very dark gray linear bands, uh, I guess a darker gray, almost black... Seem to be a horizontal band about three or four inches thick about waist high goes horizontal.
- #14: Okay, at, at this time I'm going to have to turn the tape over. All right, I want you to relax and maintain your focus. I will try not to disturb you. I want you to remain at those patterns.

~~SECRET~~



~~SECRET~~

#36: It's kind of boring looking at this thing.

#14: Okay. Ready to change the tape.

All right, #36. I want you to focus on the dark gray or black linear band or bands that you perceive. I want you to follow these linear bands, describing as you go along what you see.

#36: They're out here on my right. I feel that it turns...to my right. Goddamn!....I don't know, I got a...I don't feel good. I...

#14: Okay.

#36: Think my imagination's got the best of me here. I thought along this hall here was...just went way down there. And it... just for a flash of a second looked like...

#14: Okay.

#36: ...looked like I was in a dungeon...like...dark as hell in here.

#14: Okay.

#36: I don't know.

#14: Where are you at this time in relation to the room you started from?

#36: Well, think I'm still up here on this floor. It's above ground level somewhere. I was looking down this...I was looking down s-, looking south. Tryin' to see in this damn, uh, damn outpost here. I could see light at the other end of the hall and I was... Oh, yeah, I see where I am. The wall to my right was a gray vertical pattern. I moved along that wall and there was a hallway to my right. I'm standing here looking down that hall. I don't know, I think I'm imaginin' things. I would just as soon not...try not to analyze.

#14: Okay, then don't try to analyze. I want you now to look down that hall that you were looking. Do you see any stairs? Look to your left. Do you see any stairs to your left?

#36: Oh, yeah, in the corner there's some but that's not down that hall.

#14: Looking down the hallway, if you were looking, where are the stairs located from you?

#36: Right here immediately on my left.

~~SECRET~~

~~SECRET~~

#14: Very good. Very good.

#36: But they're right, you know? They're right...I can't see them. I saw them a while ago.

#14: I want you now to focus on those stairs to your immediate left. I want you to proceed up those stairs. When you reach the top of the stairs describe what you see.

#36: Wait a minute.....I can't....I'm having trouble holding concentration, I...keep drifting off. Just a minute....I...I feel that...this don't make any damn sense. I keep looking at the stairs, and...appears that the overhead of the stairs that goes up is round rather than...than flat ceiling. It appears...

#14: Okay.

#36: Rounded.

#14: You're doing just absolutely super. And I have one final request before we call it quits. I want you to move back to the guard and the desk. When you're at that location, let me know.

#36: I can see it from here.

#14: Okay.

#36: Okay.

#14: Okay. I'm going to move you outside the building, but before I do I want you to take a look at this desk and tell me if you perceive a telephone at this desk.

#36: It's not on the desk.

#14: Is there a telephone near the desk?

#36: Yes, but I haven't found it yet. Just a minute, I know... not on the desk. I feel it's...around and behind and to the right somewhere. It's not on the desk.

#14: Okay, I want you to focus. Focus very carefully on this telephone.

#36: I got it.

#14: Okay. I want you to move in very, very close. I want you to try and read the number on this telephone. This is very important.

#36: 733 something, or a 933 something...

~~SECRET~~

~~SECRET~~

- #14: Concentrate. You're doing absolutely remarkable. Concentrate. Concentrate on this number, the full number.
- #36: 933...there is a.....I'm sorry, I can't get 'em in the right sequence. Have to see each letter at a time, each number.
- #14: Okay, give us these numbers.
- #36: The 7 is a gray number. But the 933 seems to be black. The number in a minute (mumble)...7339. But then I wander off and I remember what I'm supposed to be doin' and I come back and it looks different. Pretty interesting place here.
- #14: Okay. You've done very, very well. I want you now to move past the guard desk and on out to the front of this entrance. I want you, once outside, to turn around facing the building. I want you slowly to drift up, up in the air, until you reach the rooftop level. At this time I would like you to describe the roof of this building.
- #36: Ahh...I feel there's a...I guess you call it a private thing. Wall like facade around the top. And there seems to be a rather shallow sloping roof, that's shaped, that slopes in all directions. I mean that, uh, there's no vertical fronts to the roof. It slopes downward and slightly to the north, east, south and west. But the gutter line seems to- that don't make any damn sense. Anyway, the gutter line seems to be below....below the facade. Below the parapet, parapet, parapet thing. Seems like a...hmm... I get the feeling that there's metal in the roof somehow. Like, uh, soldered metal. I see...couple protrusions over there. That's be, uh, let's see...north side...toward the northeast corner I sense that there's a...something sticking up like a...vents or chimneys or something.
- #14: Is there anything more you would like to add before we... we quit? Do you perceive any box type shapes on this roof or anything?
- #36: I just told you about 'em.
- #14: Very good.
- #36: Seems they could be, uh, (mumble) they protrude upward. They could be vent devices or a chimney or something. I don't know. They must be about...must be about...I don't know...a meter or so across on one of 'em...about a meter across. I can't figure the damn things out because it... one of 'em looks like a little...a little, like a little dollhouse or somethin'. That's over there to the left. Can't figure out how this roof has got a little slope to it. 'Cause from the ground it looks like it's flat.

~~SECRET~~

~~SECRET~~

- #36: There's quite a few little things up here protrude up above the...protrudin' up above the...roof. The roof appears... very dark in color. I would have thought that it'd been very light toned to reflect the heat. Appears dark. There's a goddamn antenna up here somewhere and I been...I know, it's probably like looking for the sky's blue, but...I guess all roofs have got antennas, but there's one around here somewhere. I looked for a TV antenna but I didn't see it. I think if I stand on the wall directly over the entrance... I keep looking for the antenna to my left. But I don't see it. But it's there.
- #14: One last question before we break. When you're standing...
- #36: I'm sorry, what?
- #14: As you're standing looking for the antenna, which direction do you feel you are facing?
- #36: Oh, I'm standing...on the edge of the building, directly over the, the door where I left the guard so let's see, that, that makes me looking north, I guess.
- #14: Very good. I want you now to relax, and I want you to defocus, I want you to unfocus from this session-
- #36: I'm awful tense for some reason.
- #14: Okay, I want you to just lie there, relax. Take a deep breath, stretch your arms and legs and slowly drift back to this room. We will pause at this time.
- All right. We're now ready for debrief.
- #39: Okay, uh, again #36, was the- when you arrived at the gate, was the lock on the inside or outside of the gate?
- #36: Oh, uh, I think it must have been on the inside, because I was looking at the, the chain, following the chain around. It went around across the, uh, the bars...
- #39: Then what we perceive that-
- #36: And, I was looking for the, I was looking at the lock and I couldn't see it, and then I focused very tight and I could see it. So I don't think it was on the side that I was when I was looking the chain go by. So, I, I think I just focused in on the lock, and I think it must have been on the other side. I don't remember asking myself about that at the time.
- #39: Okay, when, when you saw the silver colored key, where was the key?

~~SECRET~~

~~SECRET~~

#36: Oh, just in space.

#39: And letters "JL".

#36: "JL", yeah. Yeah, those are really peculiar letters, they were kind of stylized, like a, uh, trademark or something. Would you, like those?

#39: Mm-hmm.

#14: Why don't you draw the whole key as you perceived it?

#36: I, I had trouble with the-

#14: As best you can.

#36: -part that is, goes in the lock. I kept, they kept changing on me...

#39: #36, would it be just as easy for us to go through the questions and then let you do your drawings in peace?

#36: Well, yeah, what did, whatever you-

#39: Okay, I would, I would like, uh, one of the key.

#36: Okay.

#39: Okay. The smooth metal plate you saw on the gate, red and white-

#36: To the left.

#39: To the left?

#36: Yeah. Oh, that, that was on the gate. Oh, oh, okay, I'm sorry.

#39: But you saw a sign to the left?

#36: No, I saw a sign to the left of some kind that was red and white, but I saw a smooth plate that was about 18 inches wide and about 3 feet long near the top of the gate to my right as I was facing the building.

#39: Okay. But...nothing on that?

#36: I didn't see anything on it was smooth, and to the, just a few feet to the left, uh, above shoulder height, I think, about shoulder height going up was the white with some red on it. I tried to dope it out, what it was, see if there was any letters or anything but I couldn't make it out.

#39: No, no pictures or anything? Just...

~~SECRET~~

~~SECRET~~

- #36: It kept changing so much that there was patterns, but I couldn't make sense out of it.
- #39: Okay, and the plants you saw, they were off to the left of the gate?
- #36: The what?
- #39: You saw some vegetation?
- #36: Oh, that was after I went through, I was heading toward the building, I think.
- #39: Okay.
- #36: It was off to the left.
- #39: Okay, guard. Male, fortyish, light toned, short sleeved shirt, dark trousers.
- #36: By the way, he had a beard.
- #39: Strong feeling of security. Feels...could not march by the desk without being stopped. Sense of restriction.....
- #36: Oh, I'm sorry, was you, are you, I thought you were reading from your notes that's-
- #39: I, I, I, I was, I was just-
- #36: Oh, okay.
- #39: -gonna see if you could elaborate on that.
- #36: Oh, okay, I, I didn't realize. I was just waitin'. Okay. I...afraid I was flying there. Will you read it again?
- #39: Okay. Strong feeling of security. Feel you could not march by the, by the desk without being stopped, sense of restriction.
- #36: Uh, okay. I had the feeling that the person was under instructions to be courteous, to display a facade of helpfulness and courtesy. But that you'd probably get yourself blown away if you proceeded beyond. But the person put forth a very friendly helpful atmosphere. I don't know what to make of that, but, uh, I felt underneath that that the person would, the person, or...passing that point was very dangerous. That's why I felt a restrictive feeling. I also felt there was a woman through that door behind him.....
- #39: Okay.....Wonder if he brings his girlfriend in?

~~SECRET~~

~~SECRET~~

#36: Hmm?

#39: Wonder if he brings his girlfriend in?

#36: I'll be damned if I know. I don't even know where that is.

#39: Okay, at that point when you went through the wall.

#36: To, to the left.

#39: Now you went up and you looked down the hallway, and then you went through the wall to your right.

#36: Oh, through that door?

#39: Mm-hmm.

#36: Yeah, okay.

#39: Then you got white-

#36: Right through there, about from here to that wall there, there was a indentation to the right that had some kind of counter top or something with some equipment. It was dark colored, darker than the rest of the room.

#39: Say the light-

#36: Seen 'em in there, there's some wires or something.

#39: Communications or like that, you commented on that.

#36: Yeah, I had a feeling I had.

#39: Okay, you said that you, you felt there was a specialized function in the room.

#36: Yeah. Because of the closet to my left. It'd be just to the left where that doorway comes in. Okay, I didn't see a bar and places to hang coats. I saw little cubbyholes and niches, and there was some long, tall narrow slots like you'd slip a briefing board or something like that into. Uh, and maybe a place for sticking attache cases or something, you know. I don't know. But they were about 3, 4 inches wide, and...20, 25 inches tall. And there was some horizontal shelves, 8, 9 inches wide that had some items on it smaller than my fist.....

#39: Okay, the...when, when you saw the closet immediately on your left, did it look like it extended a long way?

#36: Deep in...and the left portion looked like it went back a meter, maybe four feet. And the slots looked like they're,

~~SECRET~~

~~SECRET~~

- #36: uh, narrow, vertical things, boards or something, come right up to the door facing, was on the right. I just had a feeling they stopped back there about, about 20 or 30 inches.
- #39: How, how tall?
- #39: How tall were the slots?
- #39: The whole closet.
- #36: The whole closet? Well, the whole closet looked like it was, you know, normal size of that door there, little wider.
- #39: Maybe 8 feet tall?
- #36: Yeah. Something like that. I don't think it went anywhere else, I think it just, uh...it was strange, I'd never seen anything like it.
- #39: Okay. Then- what color was it, by the way?
- #36: What?
- #39: The closet.
- #36: Hell, I don't know.....Tans and browns it seemed to be, warm tone. It wasn't a black or it wasn't a white, something as harsh as that. It was kind of...comfortable, neutral tones.
- #39: Okay, then you walked over to the north wall and looked through the windows.
- #36: I saw something in the middle of the room, oh, I saw a couch or something in the middle of the room.
- #39: Sure it was couch?
- #36: I felt reclining, and I kept looking and looking, trying to get from the awareness to the visual. And I saw, as a result of that effort, I saw a couch. A brown couch with three cushions. And it was either leather or, uh, (cough)..
- #39: Couldn't have been a stool type thing.
- #36: I didn't see a stool. Oh, a stool I saw, but there's two of 'em. It was over near the, towards the, if that's where the niche was, where the stuff was, they were further that way and about this position. And the couch thing I saw would be over there. And the closet would be there.
- #39: See any ladders?
- #36: No, I saw no ladders, but I saw couple stools over there and

<sup>14</sup>  
~~SECRET~~



~~SECRET~~

- #36: I thought "Well, hell, that's, they are for the work space."  
So I didn't mention 'em.
- #39: Okay, then looking out the back window. Through the bars.  
Uh, you saw kind of a park area with a building.
- #36: Lots of distance. Looking out the window he was about there.  
And I saw a street here going away from me in that direction.  
And there was one over there, block or so away I guess. I'm  
talking about distance, I'm not, I didn't see a block. And  
this, the building, is pretty good size building there, and  
those little buildings on the other side of that street  
weren't quite as tall. Stuck in between two lower, except  
that big tall building there, then right back over here was  
a...
- #39: Okay, so looking-
- #36: Church spire.
- #39: Looking due north across the little-
- #36: Something like a park, some trees.
- #39: Then you see a huge tall building.
- #36: Yeah, right there. But it was taller than it was wide.  
(mumbling, mumbling, mumbling) get another tape (mumbling).
- #39: Or do you just want to wait until he gets back?
- #36: Oh, no. He said we got about 5 minutes on this one, so-
- #39: So we're, we're still gonna- okay.
- #36: -by the time he gets back.
- #39: Uh, that's the largest building you could see, was, was due  
north. Smaller building off to the left...and then taller.
- #36: Way back I saw a narrow tall thing that reminded me of, more  
of a spire than the tall building. Uh, something disturbed  
me, I, I saw a, kind of a, a blue haze. And I wouldn't  
think that it would be associated with that area. I know  
it disturbed me at the time, and something happened and I  
lost it. But to my left I saw kind of a haze about 50 feet  
off the ground.
- #39: Okay, you said in that room...uh, when you turned back  
around you had a, kind of a high frequency s-, uh, squeal.
- #36: Yeah, it- real, like a dog whistle.
- #39: Did you hear any clicking?

~~SECRET~~

~~SECRET~~

- #36: No, just a very smooth, crisp, piercing- made your head hurt, very, like it was air hissing, very high pressure, weird thing. Very high, high pitched.
- #39: Okay, you said you detected-
- #36: Same pitch, didn't vary, didn't go up and down, it just straight pitch.
- #39: You said you detected in the room on the walls and the ceiling horizontal and vertical pattern, it's dark gray, almost black linear patterns, 4 inches in diameter.
- #36: That corner of the building, whatever floor that is on, I was getting a feeling that- and I know this might have been analytical overlay, tryin' to figure out what the hell it was. But I had the feeling that corner of the building was bars, was secured off. That corner from, from the rest of it. It seemed like there was steel, or steel bars, or something heavy. And I went around the corner, and I looked down, the thing just shhh! you know, it was like it went forever. And it felt very ominous on the right side, that would be the side that had the vertical patterns. And I tried to focus, and tried to focus, and tried to focus, figure out why I felt so badly. I didn't want to say bars or steel, but I felt that that's probably what it was... on my right.
- #39: On, on your right there's the cables are going, when you're pattern went.
- #36: The gray, dark linear pattern went on down on the side around the corner, to my right on down. And it bothered me. I don't know why, and I was tryin' to figure out why it should bother me. I looked, tried to see, uh, tried to see hostages. And I, I couldn't get past whatever this was on my right. I didn't see any hostages.
- #39: Okay...Okay. Uh, telephone not on, but near the desk, behind it.
- #36: Yeah, I felt if I was sitting in his position it was off to my right and kind of back, behind me somewhere.
- #39: On the floor or somethin'?
- #36: I didn't know where it, it must have been on something, uh, on a table or something. But I looked on the desk. The desk was shiny. I did not see a phone.
- #39: Was there anything else on the desk?
- #36: I was looking for a gun, I saw no gun.

~~SECRET~~

~~SECRET~~

- #39: Okay.
- #36: There was some kind of a...I guess it was a desk pad or something.
- #39: Okay, you drifted up to the roof?
- #36: Yeah, okay.
- #39: Okay. Uh, before I get to that, let me go back to the ones I'd like to get sketches of. The key, uh, the location of those two plates, the sign and the plate...uh, your view of, you know, when you go through the door, where the desk is located, and the guy at the, at the desk.... Then an overall sketch of the room when, when you went through the wall.
- #36: You makin' notes of #66, uh, #14?
- #14: Mm-hmm.
- #39: Uh, the view from the window. And #36, do include those stools.
- #36: Hmm? Do?
- #39: Yes, please. Uh...the view from the window. Uh...the horizontal and the vertical patterns. And then I want one of the roof. Your overall view of the roof.
- #14: At this time we are going to switch to another tape, that'll be tape C.
- Okay, we're ready to continue on tape C. This is a continuation of debriefing on Session D-45, Tape 528, 12 September 1980. Okay. #36, you-
- #36: There's the key.
- #14: You've drawn the key...you've also drawn the gate and the, and the plates and sign associated with the gate. So, at this time, let's move to the inside of the entranceway and draw a sketch of the overall room and the position of the, the desk and the guard and the telephone where you felt these things were.....
- #36: I wanna put a question mark on this. Uh, I think the phone was right around there somewhere.....Spell closet. SS?
- #14: No, no, "set".
- #36: Closet?
- #14: Okay, that's the closet. Where was the, the black box that

~~SECRET~~

~~SECRET~~

#14: you described? You described something that-

#36: Yeah.

#14: Looked like a-

#36: It's a work space, communications or something.

#14: Oh, let me find the exact words... Said it looked something like a kitchen cabinet.

#36: Mm-hmm.

#14: Had something to do with communications.

#36: Mm-hmm. Yeah.

#14: Okay. Is that-

#36: Y-yeah, I wanna draw that and enlarge it somewhere. On #3, I guess.

#14: Okay.

#36: Just to show it's relative position there.

#14: Well, that's, that's probably-

#36: Uh, I didn't, you know, I, this time I don't remember lookin' over at the right here. I don't know what's over there. In this area dots, it's all, I don't, I didn't look.

#14: Well, it, I think this ought to be fine in drawing 2. Just put "commo"-

#36: Where he-

#14: You'd feel better if he did it.

#36: Right.

#14: Yeah, it runs off the page there. I have a feelin' you can't see it.

#14: Okay, and page 3 will be...an inset of the cabinet type... area.

PAUSE

#36: Well, that's something...

#14: Okay...

#36: There was something, uh.....shiny. How do you spell shiny?

~~SECRET~~

~~SECRET~~

#14: EY.....Actually I think it's "Y", but...

#36: Hmm?

#14: I think it's just plain "Y", but we'll have to let it go like that.

#36: I don't care (mumbling) anyway.

#14: My, uh, my left brain mode is not working all that good.

#36: What else do you need?

#14: Uh, a view from the window.

#36: A view from the window? Shee...Go...

#14: Ah, just kind of a...you know, n-, nothing detailed, just... This would be the window on the north side looking out...

#36: How the hell I'm gonna draw these trees and things?..... I know there's some stuff in here, in the center, I just couldn't focus on it.....That's good enough, I.....

#14: Don't put too much in there, you'll just confuse it.

#36: It was awful low confusing crap in there.

#14: Mm-hmm.

#36: Lot of stuff in there, quite a few trees, and...

#14: Okay. Interested...horizontal and vertical patterns...

#36: It was awfully difficult here.

PAUSE

#36: I don't know.....

#14: Okay.

#36: Anything else?

#14: Uh, yes. Uh, the ov-, an overall of the rooftop.

#36: O-kay. Let me draw a little thumb nail up here. It seemed to me like, as I was looking at this thing.....No, wait a minute. I bet this is an overlay from the, uh...I bet this is an overlay from the map that I was shown the other day. I'm havin' trouble drawin' this thing.

#14: Why don't you just do a vertical? A straight, flat-

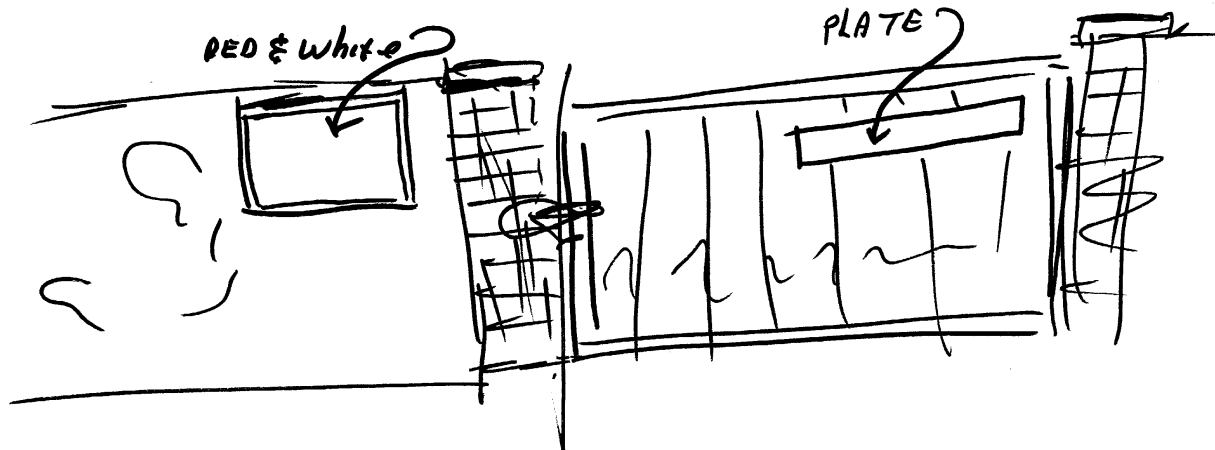
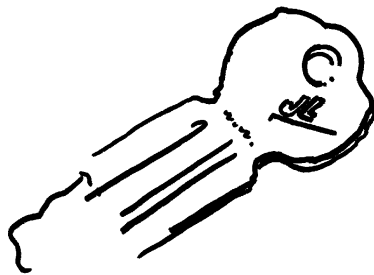
19  
~~SECRET~~

~~SECRET~~

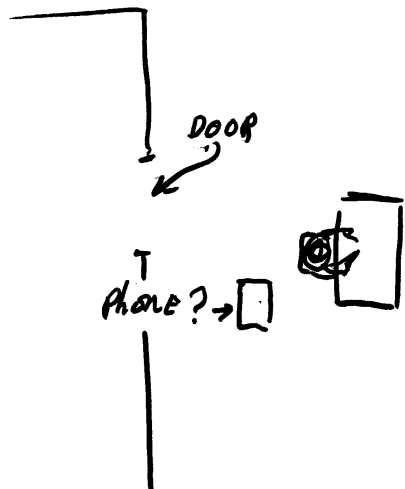
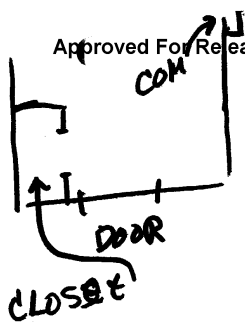
- #36: Straight vertical. Wait a minute.....  
Thought there was a kind of a parapet, I guess that's the word you use, around the top. But I felt...I felt there was some slope to that roof. What in the hell I did it in that darn corner for? I guess I musta draw something else here. Anything else.
- #14: Uh, why don't you label these things if you can, what, whatever-
- #36: Oh, heck, I don't know what they were. They were just little, uh...
- #14: Okay, where did you feel this antenna was located?
- #36: Well, I was standing here...and I felt the antennae off to the left of where I was standing. Um....Okay. I just don't know where it was in (mumble).....
- #14: Okay, why don't you label the drawings there "roof".....  
Okay.
- #36: Anything else?
- #14: (Mumbling).
- #36: Didn't know where it was half the time.
- #14: Very good. End of session.

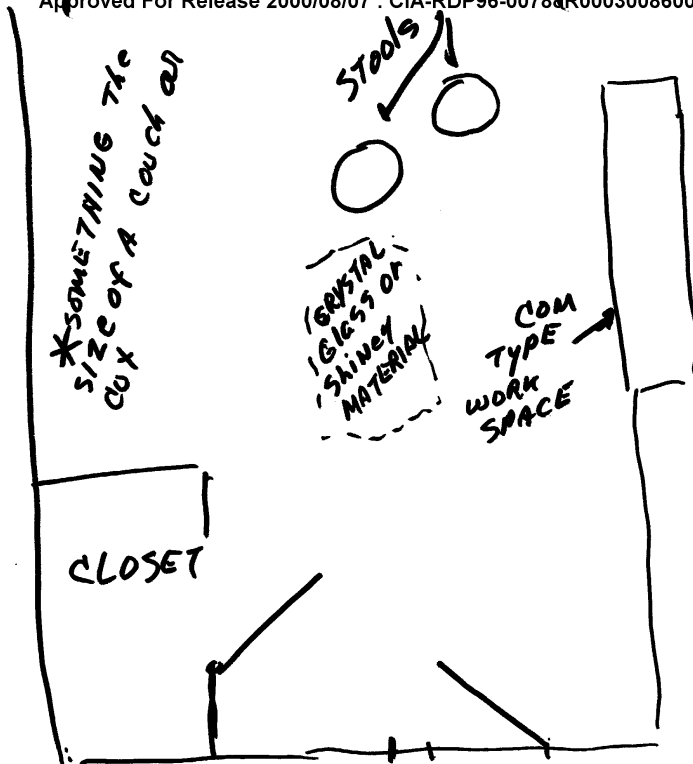
~~SECRET~~

**TAB**





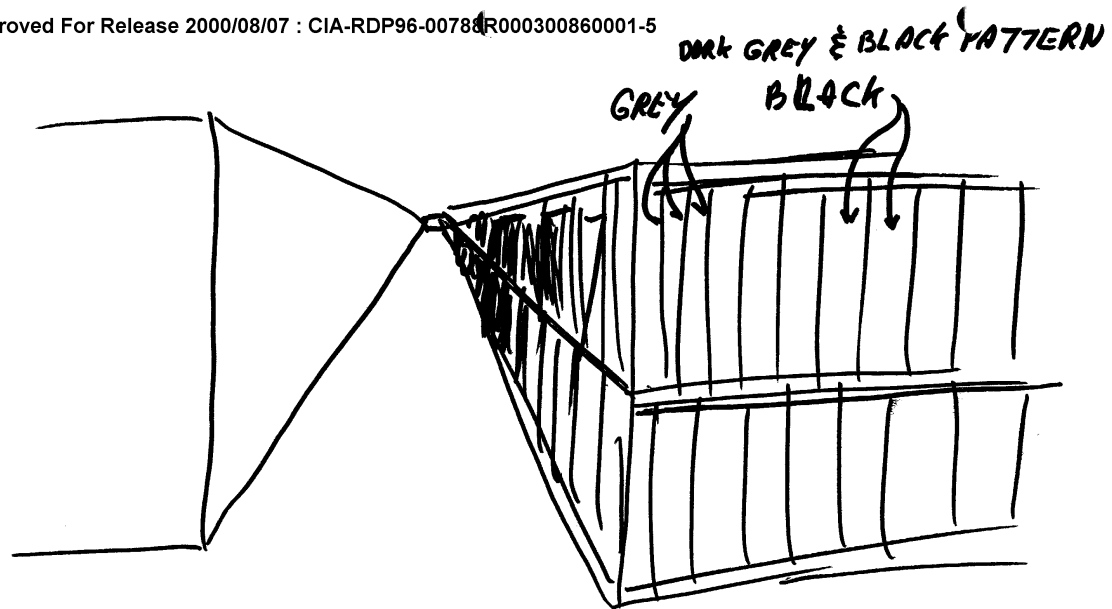


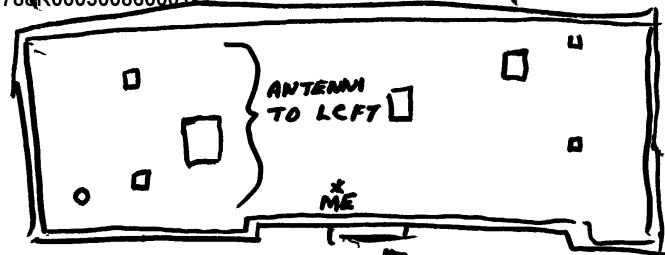


Approved For Release 2000/08/07 : CIA-RDP96-00788R000300860001-5



Approved For Release 2000/08/07 : CIA-RDP96-00788R000300860001-5





→  
ROOF OF  
BLDG

TAB

~~SECRET~~

TARGET CUIING INFORMATION

REMOTE VIEWING (RV) SESSION D-45

SG1A

1. (S/NOFORN) At the time of this session the remote viewer was asked to project himself to the city [REDACTED]. He was then asked to go to a location which he had worked against previously (see session D-37), and respond to tasking given to the interviewer by the project analyst. He was asked to go to the gate with the lock and chain. *n R*
2. (S/NOFORN) During this session the interviewer was responding to direct tasking from the project analyst while the session was taking place.

NOT RELEASABLE TO FOREIGN NATIONALS

~~SECRET~~  
ORCON