

~~SECRET~~
ORCON/NOFORN

GRILL FLAME

PROJECT

SESSION REPORT

CLASSIFIED BY: Director, DIA
DECLASSIFY ON: 31 Dec 99
EXTENDED BY: Director, DIA
REASON: 2-301-C (3) (6)

GRILL FLAME

~~SECRET~~

Approved For Release 2000/08/07 : CIA-RDP96-00788R000800270001-5

SUMMARY ANALYSIS

REMOTE VIEWING (RV) SESSION CC34

14 Dec 79

1. (S) This report documents a Remote Viewing (RV) session conducted in compliance with a request from SOD, J3, OJCS, Pentagon, Washington, D.C. The purpose of the session was to provide information relevant to the hostage situation in the U.S. Embassy compound in Teheran, Iran.
2. (S) The remote viewer's impressions of the target are provided as raw intelligence data and as such have not been subjected to any intermediate analysis, evaluation or collation. Interpretation and use of the information provided is the responsibility of the requestor.
3. (S) The protocol used for this session is detailed in the document, Grill Flame Protocol, AMSAA Applied Remote Viewing Protocol (S), undated.
4. (S) Following is a transcript of the viewer's impressions during the remote viewing session. At TAB A are drawings made by the remote viewer reference his impressions of the target site. At TAB B is target cueing information provided the remote viewer.

~~SECRET~~

Approved For Release 2000/08/07 : CIA-RDP96-00788R000800270001-5

~~SECRET~~



TRANSCRIPT

REMOTE VIEWING (RV) SESSION CC34

#66 This will be a remote viewing session (edited for security).

PAUSE

I've shown you photographs (not audible) Focus (not audible) location of these (not audible) Relax and concentrate. (not audible) Relax and concentrate and describe the area to me.

PAUSE

#31 Right at the very beginning my first imagery was ..uh..upper corner of a structure. It felt as though it was..uh..small stones and dark. I was looking at the corner of a flat roof a small wall around the edge, but the peculiar thing was, right in that corner was a metal tower. I felt as though it was maybe 25 or so feet tall. Almost as though it was a miniature of a commercial radio antenna..a box, tapering box metal framework with cross numbers running all through it. The building is made up of little stones, as though it was almost a brick face, and there was white outlined windows in it. Window squares that were not truly square. They are slightly arched with a..and the arch is..(mumbling) was bordered in white, and the arch of the windows had a funny upswing at each end of it. I felt as though this place that I was...maybe had a fourth or fifth story level. On the roof, to my far right was a large dark...my first feeling was a box with tar paper all over it. It seemed very dark in the..gummy and this thing was maybe 40 feet away from this tower in the far corner of the roof. Let me clear and work some more.

#66 Very good. .

PAUSE

#31 Um..I had another impression which began only when I began talking that the building had some sort of a frontal facade above the roof line. It seems something free standing above of the roof line. It is also, as I recall has the general but longer shape of the windows.

~~SECRET~~

~~SECRET~~

#31 It was arched and then had a peak at each end..
a bump at each end. But, this thing was also made of
the same stone of the structure OK, I'll clear now.

PAUSE

#31 I have a feeling this place is a very regular possibly
7 story high. A brick type of..it feels dark stone on
a corner. Has a...on ground, sidewalk level, has a
overhang of which is faced in white. It ..overhang
droops at each end. I have almost a feeling of a
of stairs and steps which are rounded or possibly
..uh..4 or 5 high..have a distinct feeling of a handrail
splitting this step in the middle...but the overhang
does not seem round. It seems flat (mumbling). It is
...it is ...puzzling..the face..the whole arrangement
is as though it's a theater similarity a marquee flavor.
Very unusual. Let me clear.

#66 Very good.

PAUSE

*Hall of
Mirrors*

#31 Second time now am in a wide cool..uh..glass, lined,
hall. It is a..dark, like a..it is damp and dark but
open, like a public mall. I..it's as though..there are
a business offices here..there are glass windows with
drapes and such. I ...like a place with..a..uh..
think I am in the place. I think I am only little
above street level on the gr....I think I went through
the front. It is a wide public thoroughfare..business
offices...there is a flavor of...flavor of..uh..
commerciality..commercialness communications Businesses
..little...little businesses...not of a crafts nature...
of a business office nature..uh..off of this place on
the right seems..is a..uh..mid-way..is a indented but
very open doors swinging doors for many people to go
through at one time. Much..uh..much..uh..traffic..

#66 You only ought to be in the area where the individuals
in the pictures are located. To the actual specific
area (not audible)....and describe (not audible)

PAUSE

#31 I popped out of that so give me a couple of minutes
and I'll get back into it.

#66 We have plenty of time. Return now to the area.
Focus in on a specific area in the building where
these people are located.

~~SECRET~~

~~SECRET~~

#31

I continue having feeling of a number of people dressed in disheveled clothes and sitting in a row of chairs with their backs to a wrinkled wall or a curtain, backdrop. It's...appears to be a tan or a sandy, gray..this place seems narrow and long and there are lights at the end of it. But they are facing across the narrow part. They are facing into a void. Into a..(mumbling) there's no other wall. Just as though they are on a platform or a..in a hallway or something. Where am I? There only seem to be four or five here. They..uh..I don't know....I don't know. I am getting alot of override. I have the feeling that they're on display and that they are on a stage. *m*

PAUSE

That's all I'm getting. I tried to clear from my earlier imagery, and I popped out. I tried to clear going in and I end up on the bloody stage that's in front of the double doors from before. That's all I can get.

#66

Ok. Lets draw pictures

#31

Once I came out of that it seemed like I just couldn't get back in. I was going great guns. For some reason my eyes opened right here onand then I had to start over again.

#66

OK. I think we got some very good descriptions of the building, so let's draw those.

#31

I had the feeling that when I went in there before that there were a number of people sitting in chairs on a bloody stage and that they were looking out into blackness. *m*

I did get a feeling for what kind of thing..I'll draw an overhead.

The first image I had was as though I was looking from very close up. I was looking down on the corner of a roof top as I am drawing it here on one. Tucked right inside the corner of this roof top was a small scaffolding that went up in the air. Maybe 25 feet. And it was tapered up, like this, and then here's a back part of it....a small wall...across this...and then this is the back.

#66

Are you telling me then that this is a three sided thing:

~~SECRET~~

~~SECRET~~

#31

I couldn't tell you if it was three or four. I'm drawing it three but it could be four. But, it's small. It's like a hand-radio rig, antenna..you know... I didn't get the idea the thing was massive. I just got the idea the thing was compact and maybe it was 25 feet high, and the base might be a foot and a half or 2 feet from pole. That's all. But it's tucked right down over the lip of this roof and the roof..... I had the feeling was generally flat. It had some bumps and things that I couldn't resolve. One being ...there that's the way to do it.....like this..... there we go.....ok.....like that.....all right.... one was that this edge that the corner of the building that I was facing had lines in it as though it was made up of smaller brick but all I can tell you is the linesI had the impression of small stones.....like this.... that the roof of the dam thing was essentially flat... It's hard for me to describe. It's as though there might have something covered up with the tar paper roof. Might have had little bumps in it or something like that. ...but, that it essentially was a flat roof. It wasn't a peaked roof with an overhang. It was a flat top roof. Definite feeling that the roof was tar black type of a thing. In the far right corner of this perspective that I was in there was some sort of a black shed. Possibly, only.....again....tucked right up close to the wall. I didn't see any door or anything on it. I definitely had the feeling it was tar paper.

The brickthis linear thing....I had the same for this thing which popped up....there was some irregularity on the roof line to my left. I couldn't tell precisely what it was. As I was working on the roof as a focus point, though, I got this feeling of some sort of facade and that there was some sort of artificial higher part on the front face of the building here which is this thing I've drawn on the left. That is probably not to scale but it is that type of an idea. Something false like that.

The window....I got a clear shot of a window....like a top floor window down here on my lower left. The proportions of which were very similar to this. As though they all matched. At least the window and this facade thing matched in gestalt. I'm not going to put any kind of a window in it. The peculiar about the window is the top and the bottom of it were much lighter than the sides of it. It is as though this top curvy part is an extra add on ornamental piece on the building,

~~SECRET~~

and it's white. The bottom of the window frame is a straight thing but it sticks out and it's white. The sides of the window are just regular old brick. That's the idea I wanted to talk about. Talking about a whiteness and white on the bottom...the bottom of the window sill. This is just regular old brick here. Goes right along with the wall. Perspective is off on that....The building appeared mid-tongue dark..like red brick or something.....deep tan....deep brown....small bricks....brown/red small bricks.... this is a facade..roof facade I guess we'll call it that tar paper covered shed. There were no windows on this. I had the feeling there were windows regularly on the building. This is the only one here in the upper right hand corner of what I think is the front building face, is one of them.

Now, two. Sidewalk down here...sidewalk across the front. Had the feeling of regularly spaced windows going up the side of the building. In what I perceived to be the front of the building was the only..as though what we had was almost like a some sort of overhanging protrusion...this being brick in the back but this being white and I had feeling against that white background that there were squiggly lines on it. As though it was a marquee type of thing or some sort of an announcement place where they had a title written up there. It was just squiggly lines..I had the flavor for black lines on the white front. A wide opening and a feeling that the steps shaped like this. Here being an under part and here being steps and here being steps and here being steps, and the steps being connected like this, as well. If you looked down at it the steps wouldn't be straight across. There would be three angles from which you could enter this thing. This is darkness. Oh! and a rail or some sort of a dividing rail that went down the middle of the steps on that face but I didn't see any on the other sides. The actual building face is there, though. I'm sure that there were buildings on the other side as well. I had the definite impression that I was looking at a ...now this is the interesting part...it's a T intersection type of a feeling....as you will see later on. This is another building on the right side.....road that goes up between structures. This over hang is bigger....the white over hang is bigger than the brick that supports it.

On three I will do what I perceive to have been....here is brick face of the building,...here is the overhang.

~~SECRET~~

~~SECRET~~

I perceived that thing to have been shaped like that. If I was to cross-section the thing right down the middle it would look like that. This is the brick part, and this is the white face. If it was sized, I would say that was 8 feet, sticking out off the side of the road, here again the side of the building goes down..and here is the staircase...yeah.....the staircase is there....or what would be the three way steps. Cross section of the building as if we were looking down the sidewalk from level with the overhang because I have shown you the perspective is off a little bit. Down here on the bottom is the steps.

The next feeling that I had was that I was looking down a very long mall type of thing. I think I was in the building. I will put it all together. I had the feeling that I was in a business mall area of small offices...commercial enterprises but I felt a heavy influence of communications ...like I kept thinging Radio City Hall....Radio City Hall....I had the distinct impression on the left and on the beginning of the right, that there glass panels were curtains hanging behind one could not look into the little offices.....cubicle type of offices...all business.... not little shops....not taylor shops or anything like that where you dealt in a commodity...but business offices where you didn't deal in anything ...you went in and made deals....things were elsewhere.... I had the feeling that on one side it went almost all the way down.....gray or tan curtains hanging behind panels of glass so as to keep you from looking through. I had the distinct feeling that the other end of this place was white...light...that there was light...would emanate down the hall...like it was an open mall... I will put open. I think it was the other end because one time during the session I turned around to see where I was, and behind me I just matter of factly said well that's the entrance so this must be the back way out.....open end.....that's all I'm going to call it.

Here, though, I had the feeling that on the right side of this long mall or wide hallway.....and I mean wide. I'd say that it was shopping center wide. It wasn't inside of a structure wide. It was more like 25 feet wide...much passage. Many people coming and going type of thing....and that here was an area which was like an entrance with a number of doors for mob action through them. Not like a single door, not like a double door

but like four sets of double doors here on the right. Like an entrance way to a big public place of some kind.

I'll label this an inset off of wide corridor with many pairs of doors, and they're glass. Public type of glass....like you find at the Kennedy Center....

Again, I'll be the first one to say it. When I got to the double doors, because possibly of the mine set I was working in at this time, I saw a amphitheater... like a stage. I saw a bowl...I saw a big thing and I thought I was looking down at a stage. That's why I began to worry.

#66 You went through the multi doors on the right, and when you went through there, what did you see.

#31 I saw what looked as though was a large open room, lined with seats down in a bowl shaped with typical theater type of thing with a stage at the end down there.

#66 Were you surprised to see this?

#31 Yes, I was. I couldn't shake it. I tried to find other things but I just could not lose this feeling, this image. It kept popping back. Even when I tried to just clear and not do anything for a couple minutes then I would continually come back to this darken theater type of feeling with rows seats going down into the distance and with stage with bright lights and things down there.

#66 Was there any activity at the time you saw it?

#31 I was not picking up on people. I had no people there. I didn't get the impression ...when I was doing all this I did not have the feeling that there crowds of people coming in and out, or anything like that. I did not get the feeling that there were people in there at this time. Just that this was down there.

That is when I faded out on the tape and I popped up to the surface again. Four or five minutes went by and I just cleared, and I did nothing and the next feeling that I had was a row of people sitting in chairs on my right going off in a perspective.

So this is six. They were just vague shapes. It wasn't very clear imagery. Vague shapes of people sitting in chairs. Then it became more and more solid as I was there. I had the feeling...this is where I think I went

~~SECRET~~

~~SECRET~~

around 360 degrees and I just...because I had the feeling of....this is a composite.....check the tape for sequence.....all right....of a hanging drape on my right with a number of people sitting....and then here..in a straight row, as though their back was to a drape...a number of figures sitting like this receding off into the distance... possibly four or five was the feeling I had. Four or five people sitting alone in this row. It was black out here and it was light.....intensely through that opening...it was just a square of something. My view of it was closer into this back drop. It was more, as though right here in front of me was a man.

#66 Did you recognize him?

#31 No, I am sorry to say. First of all I would like to say I was using Bruce Laingen as a beacon. I had looked at his picture and of course he was wearing a tan suit in that picture, but the guy on the end, I had the distinct impression was wearing a suit, coat and pants, but disheveled looking and had no tie and his shirt and color was open. Shadowing in the background were the other people. That's the idea I want to get across. The first feeling that I had was that these people had their arms tied behind them. As though they had had their wrists tied behind the backs of the chairs. They were sitting with wrists bound around behind the backs of the chairs. That's another thing I want to put in there. That was something I couldn't shake. Even though I said it was impossible that they were sitting in a public place being looked at...be so obviously bound up....but that is what I got.

*Laingen
Impression*

Here, this is more like the actual view that I had. This darkness. Here is the feeling of this curtain. I was much closer to the curtain from this perspective. Gray or tan light curtain hanging.....row of men sitting in chairs.....this guy open neck.....light tan type of suit.....or jacket. I am sure he was wearing some sort of a light type jacket. Open neck color.. it appeared as though the arms were bound behind the backs of the chairs. At least the guy on the end. But I never did get enough resolution to get a facial characture

#66 That will be page number seven then.

#31 Yes. And it was intently light. That's all I got.

~~SECRET~~

#31 Oh! I didn't do you your overhead. OK. When I was out I had this type of a feeling.....overhead perspective for eight was....here is the antenna thing.....here is the curvy thing.....black... I was very, very sure of that feeling...tar paper roof.....sidewalk here, sidewalk here....funny thing sticking out like this....stairs and under it.... Another building....building X...I don't know what it is....across the street I got no structure across the street. I felt like I was on a T intersection. There were trees down past the intersection and then building starts....trees up to there and then..... intermittent trees but open grassy area....no structure across....the street.....like a park....that's the over head I got.....

My overhead eight came between three and four. It came before I got in the building.

#66 Ok. I have a couple of questions now.

You commented on the eight of the building at one time. Can you comment on that now?

#31 I had the feeling it was five to seven stories area. When I was up there, I felt like I was a pretty good ways above the street but it wasn't like I was looking down from the Trade Building. I was higher than I had ever been in any other work in this group.

#66 Any time during your session, you simply saw no people at any time.

#31 No. I saw these people at the end of the session. I saw people sitting on stage. But I did not see people during the first part of the session...until I had surfaced and then I went back in I ended up at the stage level. All the while I was going through the complex until getting to the stage, I did not detect any individuals at all, or groups of people.

#66 Now, I would like you to comment on how you feel about time in this situation. As you know, when we were working this thing, it was between two and three in the morning. How do you feel about that concept and what you saw?

#31 It didn't bother me at all. I didn't detect anything that would contradict that. I didn't think I was necessarily looking at things in broad daylight but

I didn't think I was looking at things in the dark either. It's hard to tell.

#66 How do you feel generally about your session?
Generally about your imagery and your experience.
What do you feel about this imagery?

#31 Through four, I got no trouble at all with. From one through four. I know myself. From five, six and seven the...again the feeling...I was trying to shake it...but I couldn't shake it....overriding feeling of communication place like theater, radio station or something like that continued to override. So I would have doubts about the last section of the transcript. But, the first section one through four, I felt was real sharp and clear.

#66 Just one more question I have, and that is...whole beginning scenario of this session you were asked to focus on these individuals you have pictures of.. and, no time did you actually see or recognize those individuals during session but you started out describing a building.

#31 That's right...if I saw anyone of them, it's this guy, and he's sitting on the end of the line Bruce Laingen. It goes all the way through and into the session. The part that I am unsure about.

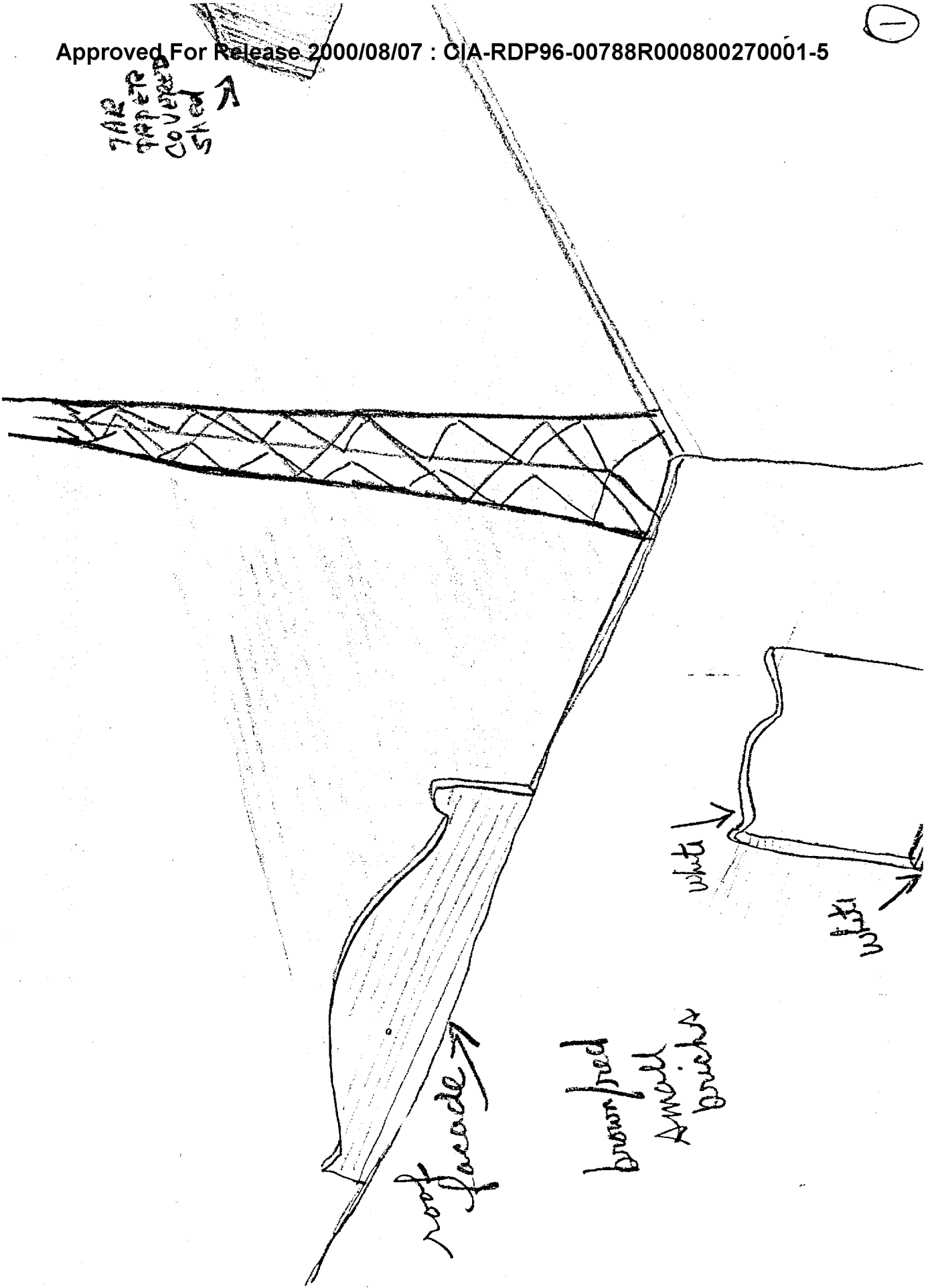
#66 Is there anything that you want to add?

#31 No.

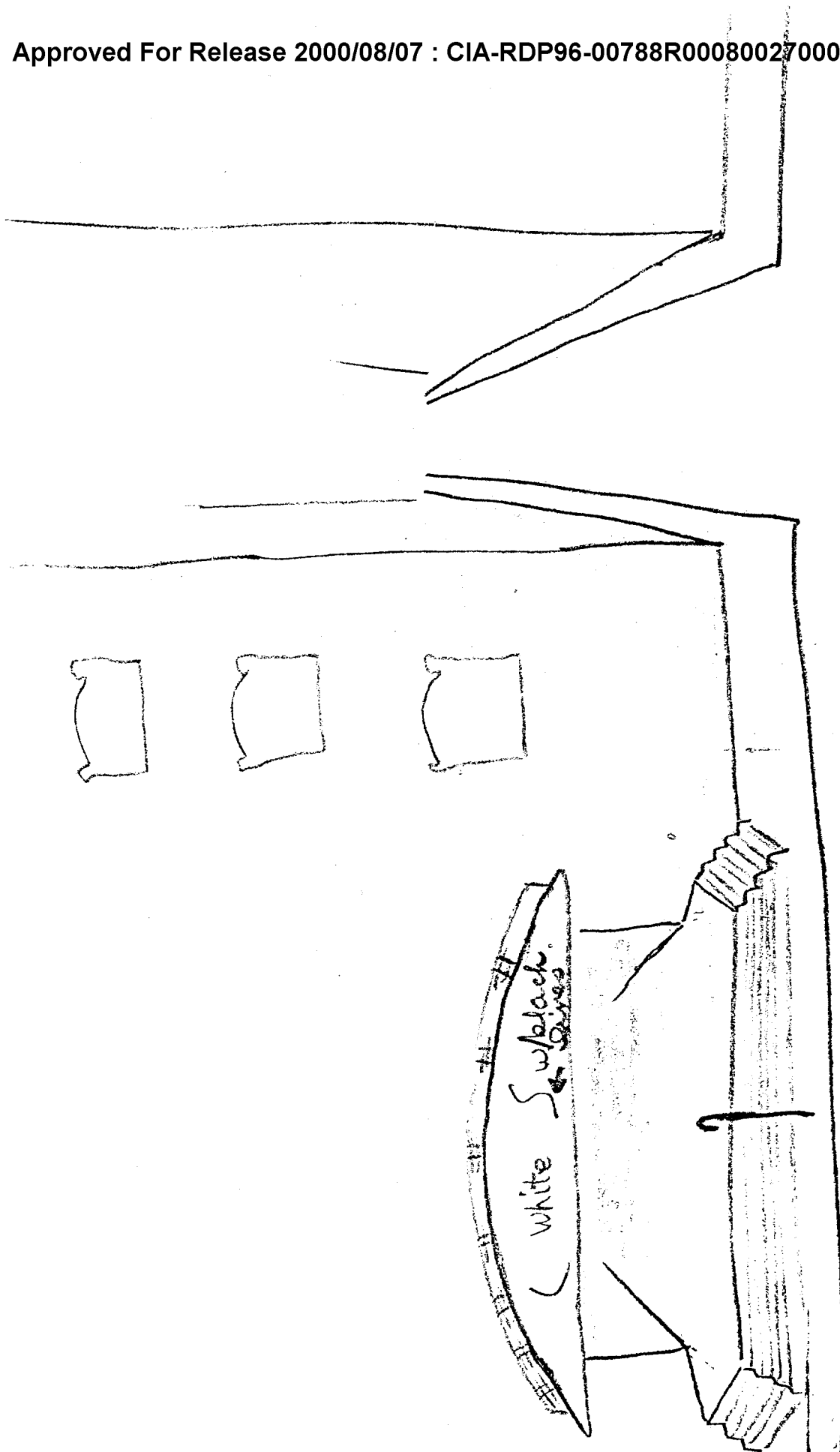
TAB

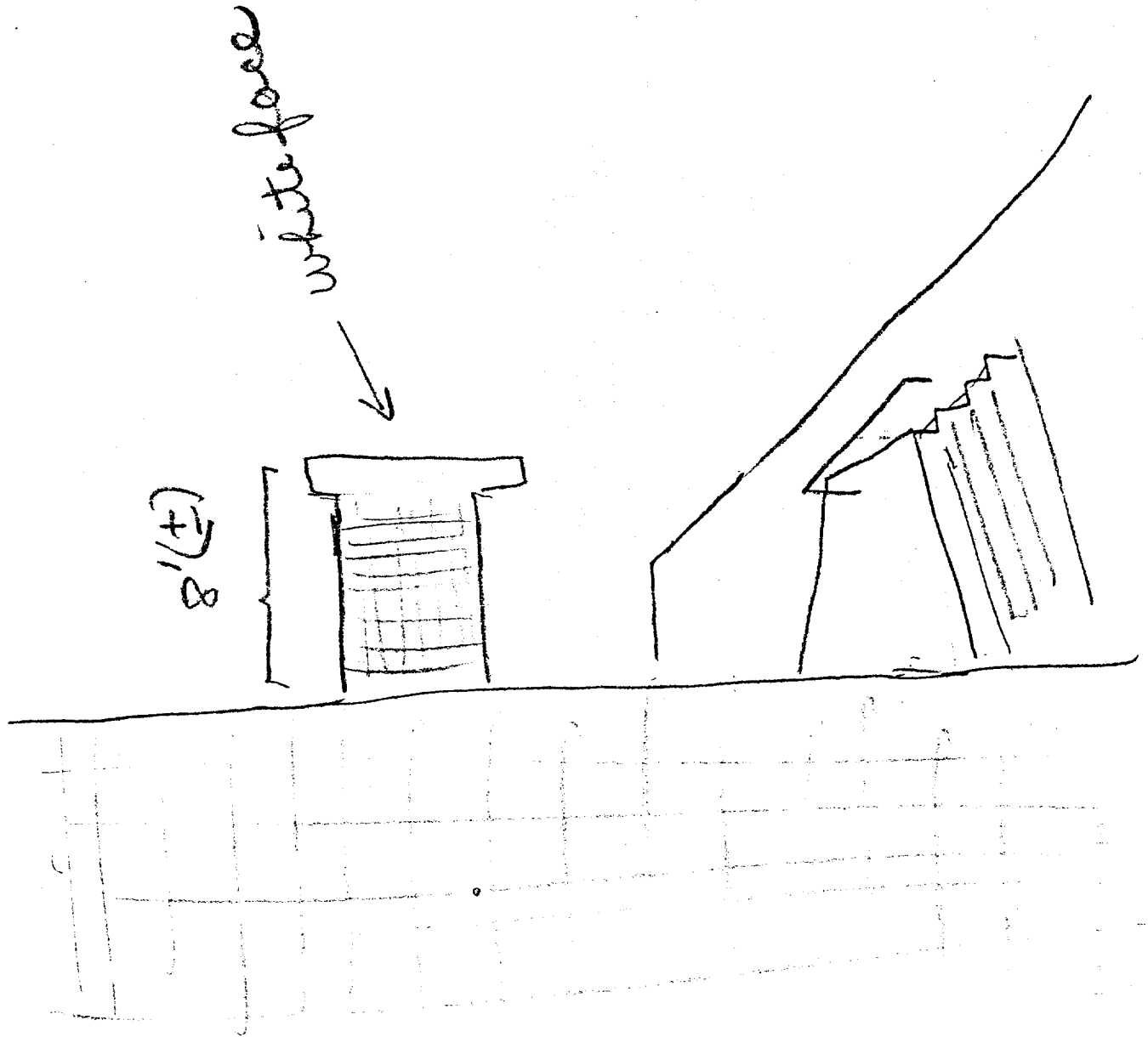
①

TAR
PAPER
COVERED
SKED →

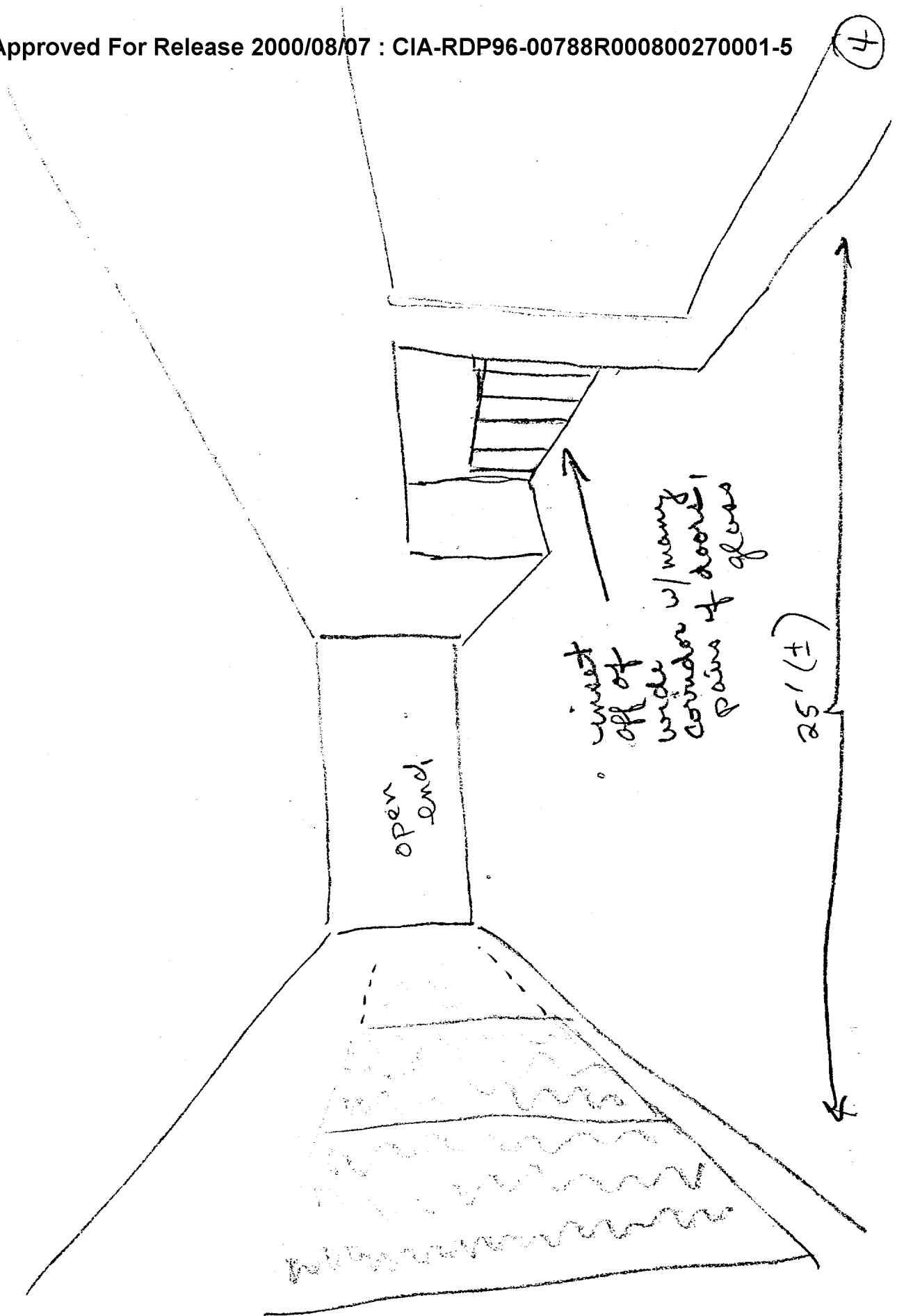


2



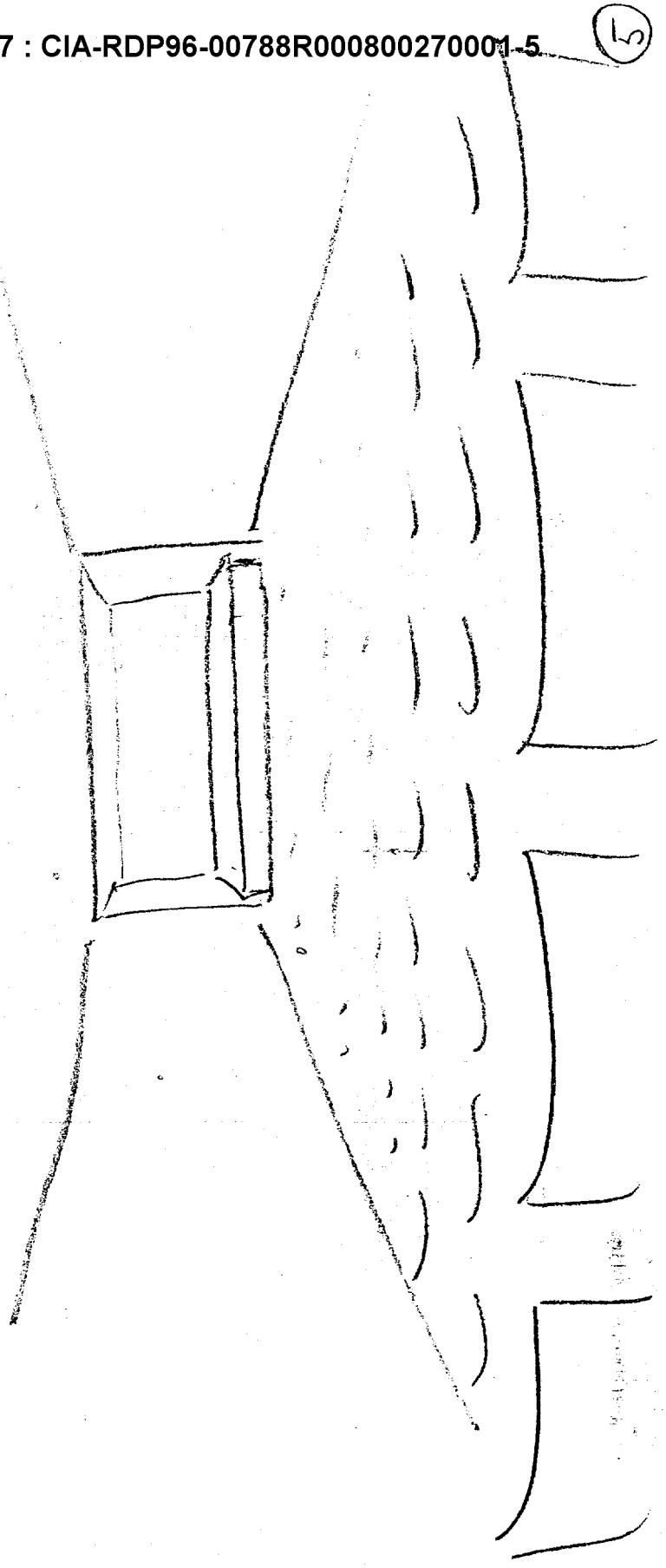


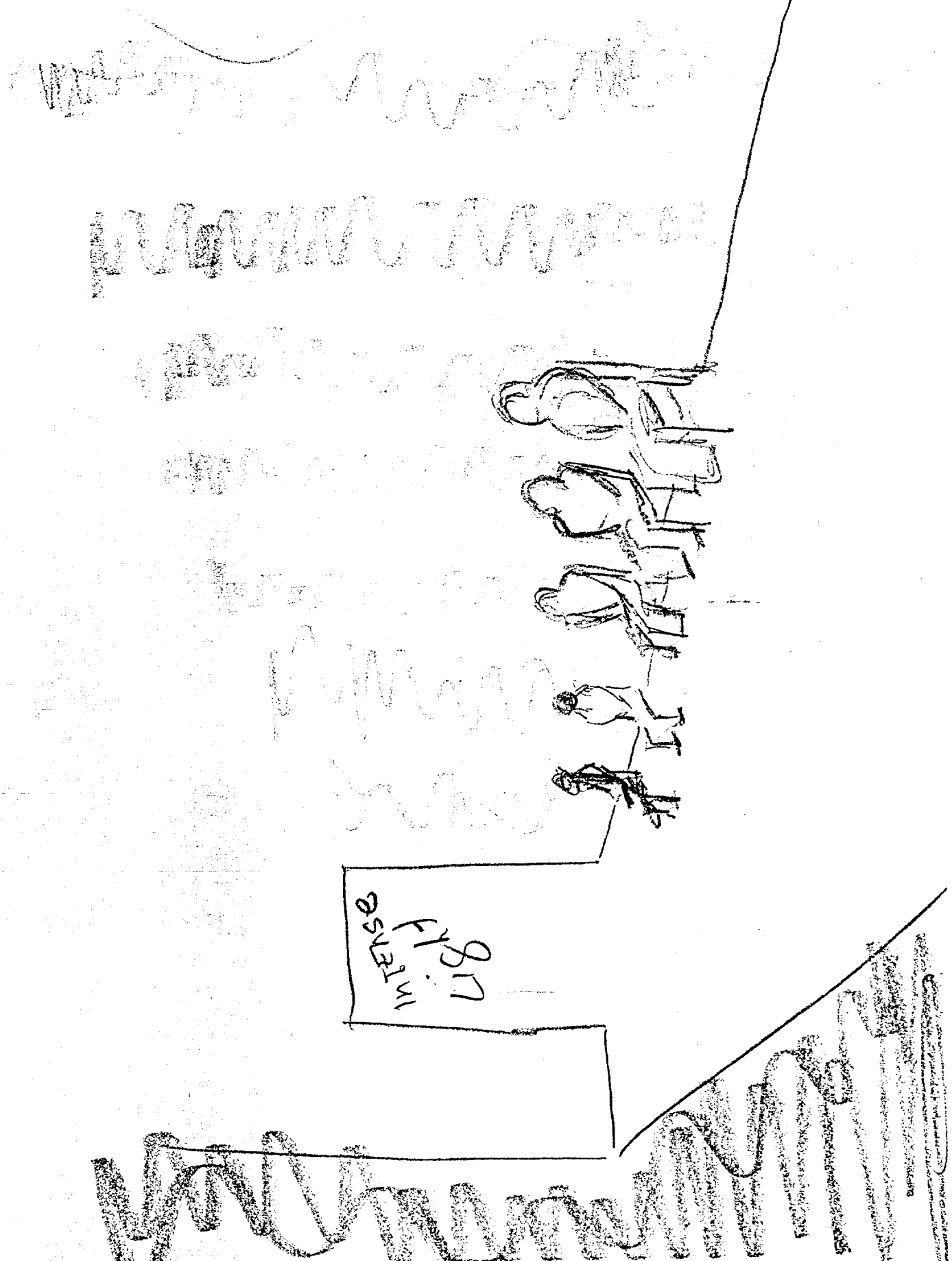
4



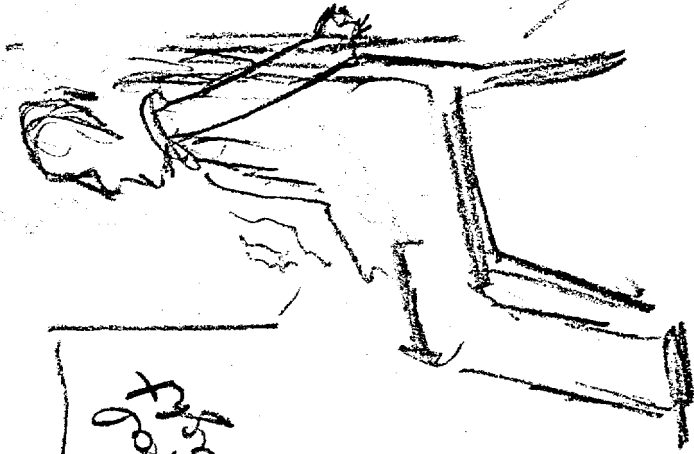
(b)

Theater type room
stage down front



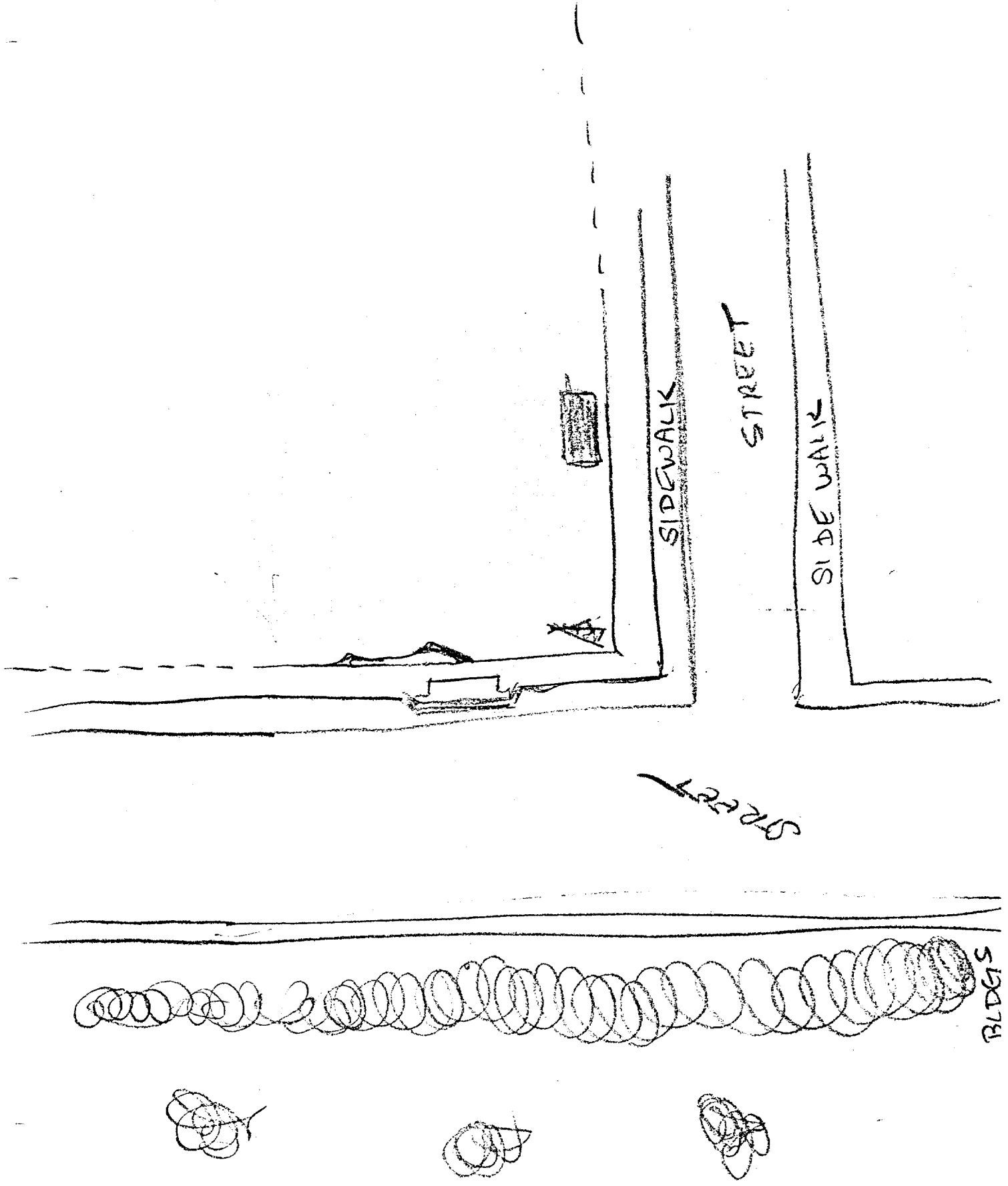


grey or
tan light
curtain
hangings



light
grey

Dark
grey



TAB

TARGET CUING INFORMATION

1. (S) The remote viewer had been exposed to open source news media information and had seen overhead imagery prior to the session. He knew he would be working against the hostage situation in Iran.
2. (S) The following pictures were the only information provided the viewer at the time of the session.

~~SECRET~~

SG1I

Approved For Release 2000/08/07 : CIA-RDP96-00788R000800270001-5

Approved For Release 2000/08/07 : CIA-RDP96-00788R000800270001-5