

~~SECRET~~

Approved For Release 2000/08/07 : CIA-RDP96-00788R000900030001-0

INSCOM

GRILL FLAME

PROJECT

SESSION REPORT

CLASSIFIED BY: Director, DIA  
~~REVIEW~~ ON: 31 May 99  
EXTENDED BY: Director, DIA  
REASON: 2-301-C (3) (6)

GRILL FLAME

Approved For Release 2000/08/07 : CIA-RDP96-00788R000900030001-0

~~SECRET~~

~~SECRET~~

SUMMARY ANALYSIS

REMOTE VIEWING (RV) SESSION XXIII

1. (S) This report provides documentation of a remote viewing session conducted for the purpose of orienting a remote viewer to the protocol which will be used in the remote viewing training program at Stanford Research Institute (SRI), Menlo Park, California.
2. (S) This remote viewing session was conducted after normal duty hours. There was a marked lack of enthusiasm on the part of the remote viewer and the interviewer. There was very little target correlation in this session. The "outbounder" or "beacon" behavior was excellent and would probably have aided in increased target correlation if other elements had been favorable. Ambient room noise was minimal. The remote viewer was simply unable to physically relax and concentrate on the task at hand due to as yet undetermined factors.
3. (S) The protocol used for this session was modified from that which will be used in later training. The protocol to be used in later training is detailed in the document, Standard Remote-Viewing Protocol (Local Targets) by Harold E. Puthoff and Russell Targ, November 1978. This session's protocol was modified in that a randomly generated, preselected target was not used due to the unavailability of the target pool. In lieu of a randomly generated, preselected target the "outbounder" or "beacon" simply chose a site which, in his opinion, was unique and identifiable.
4. (S) Following is a transcript of the viewer's impressions during the remote viewing session. At TAB A are drawings made by the viewer reference his impressions of the target site. At TAB B are photographs of the target site. At TAB C is a post-session interview.

~~SECRET~~

~~SECRET~~

TRANSCRIPT

REMOTE VIEWING (RV) SESSION XXIII

TIME

#7.5: This will be a remote viewing session. (Edited for security.)

PAUSE

#7.5: #6.5 is at the target location . . . He is . . . observing the target. . . He is taking notice of the features of the target. . . Relax. . . Concentrate. . . Focus. . . Look. . . at the target. . . and describe the target. . . to me.

PAUSE

+06 #7.5: Tell me about the target.

PAUSE

+10 #7.5: Describe your impressions to me.

PAUSE

+16 #7.5: What impressions do you have?

PAUSE

#47.5: I'm really not coming up with anything all that good. . . . My first impression had the shape of the handle of a . . . a Luger handle. Ah. . . another would be a funnel type shape.

I had the impression of trees. Or a tree line. ✓  
A vague impression of something that looked like a . . . a wolf's head or something. Something like you'd see on a Cub Scout badge or something.

PAUSE

#7.5: #6.5 is at the target site. . . Is working with the target. . . See what he sees. . . Sense what he senses. . . Relax. . . Concentrate . . . Focus your attention on the target . . . (not audible). . . Describe the area.

PAUSE

~~SECRET~~

#7.5: Describe the target to me.

PAUSE

#7.5: Do you want to draw what you have for us?  
(Not audible).

#47.5: Yeah.

PAUSE

#7.5: Do you want light?

PAUSE

#47.5: (DRAWING)

PAUSE

#47.5: I guess that's about it.

#7.5: Okay, talk to me about your pictures now.

#47.5: Okay. The shape of Number One reminded me  
of the handle of a Luger hand gun. I'll a . . .

#7.5: The dotted lines?

#47.5: That's just drawing in the rest of it. And  
this is just a shape that sticks in my mind  
more so than anything else. The rest of it  
could have been a , you know, materialization.

Number Two: It was a funnel shape, or . . .  
it was some type of a funnel shape with a stem  
on it. The stem was long and narrow. I'm not  
sure. It seemed to be more long and narrow.

The Third item looked like a tree line. It  
almost looked like if you were standing here  
on the parade ground and looking down towards  
the stop light sign, you're looking at the tree  
line over there.

Four: I had that . . . I visualized that  
several times and all I could really make out  
was . . strongly, was the V shape. And perhaps  
something round within. . . inside of this  
shape. I almost had an impression of kind of  
a foot or something down here. But I visual-  
ized this several times.

~~SECRET~~

#47.5: Five: I visualized earlier but didn't remember it. That's. . . It looked to me like the Cub Scout badge. You know, you see, the wolf thing in kind of a silhouette.

Number Six: Was interesting. It was like looking up into the air and seeing an aircraft with the contrail. . .

Seven: That is like looking into a culvert only it appeared to be square shaped or diamond shaped or something. It would be like this would be solid and you would be looking through, like through a wall or something.

PAUSE

And that's it.

#7.5: Okay. Did you get the impression of the target was inside or outside?

PAUSE

#47.5: I think the best overall impression would be outside. ✓

#7.5: Okay.

PAUSE

#7.5: What meaning does Drawing Number Two have for you?

#47.5: The, ah. . . the funnel shape? I don't know. In a way, it almost reminded me of a stem. Of a flower. But then again, it almost reminded me of a tornado. It was just a shape.

#7.5: Okay.

#47.5: And likewise with Three. All I saw was the outline. Then I had. . . I associated that shape with the tree line.

#7.5: Okay.

~~SECRET~~

~~SECRET~~

#47.5: Four: That picture completely escapes me. I don't even have anything on the analytical side that I can hook to it.

PAUSE

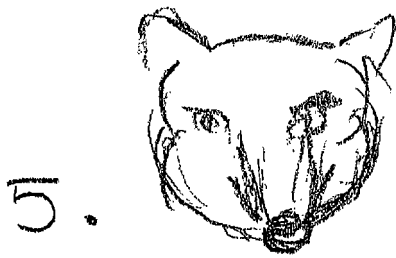
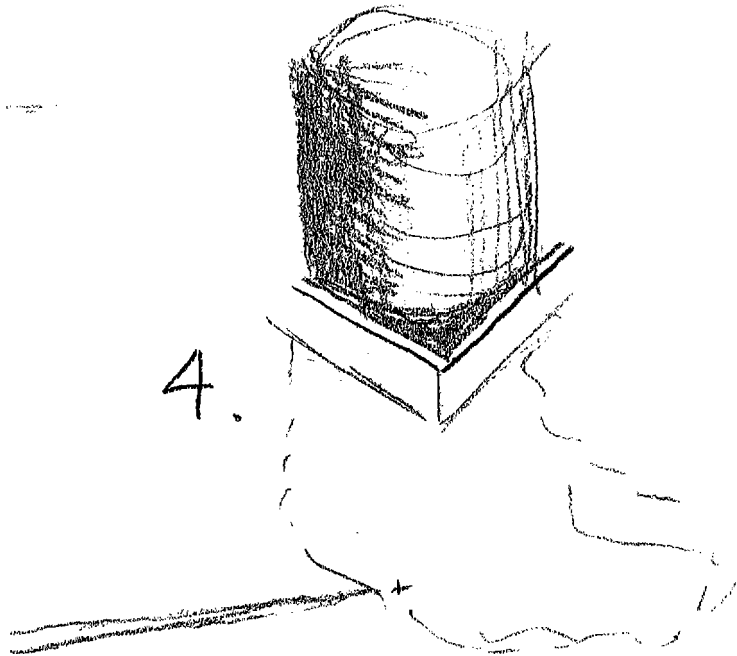
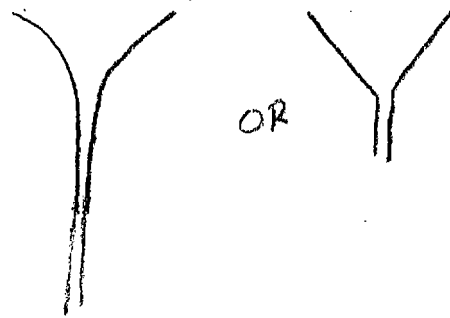
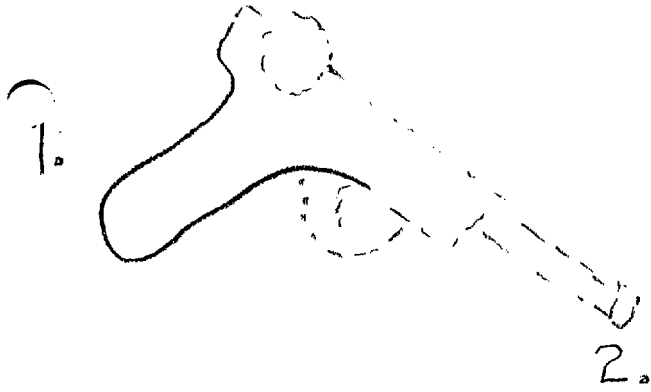
#47.5: That's all.

#7.5: Okay. Is there anything else you want to add?

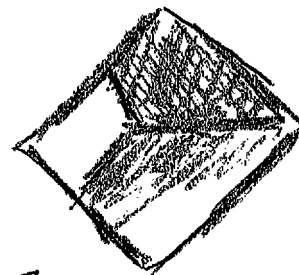
#47.5: No, except that I am not too confident on this session either. This seems to be about, what, the third one in a row?

~~SECRET~~

# TAB A

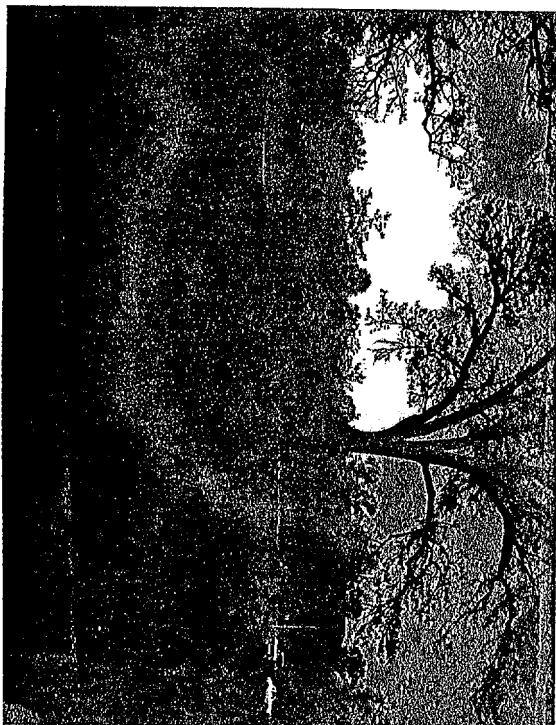
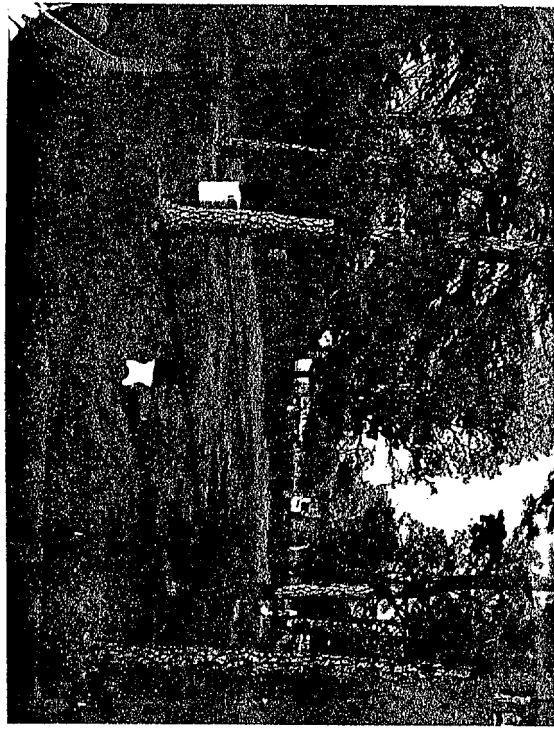
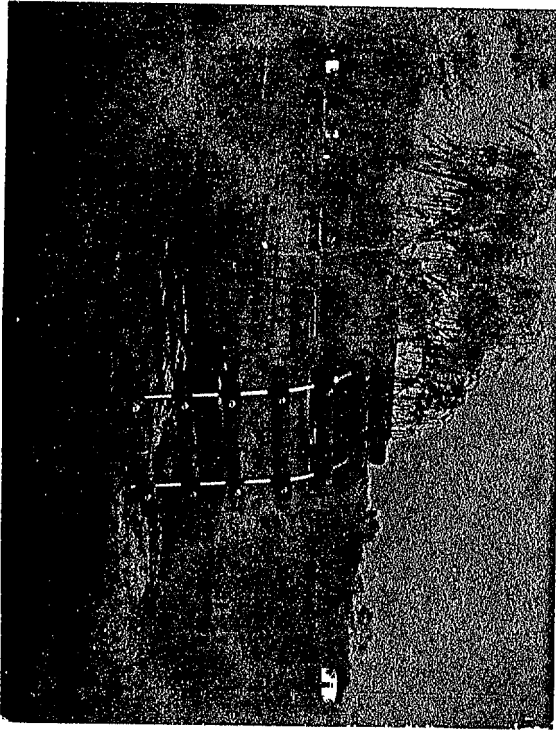


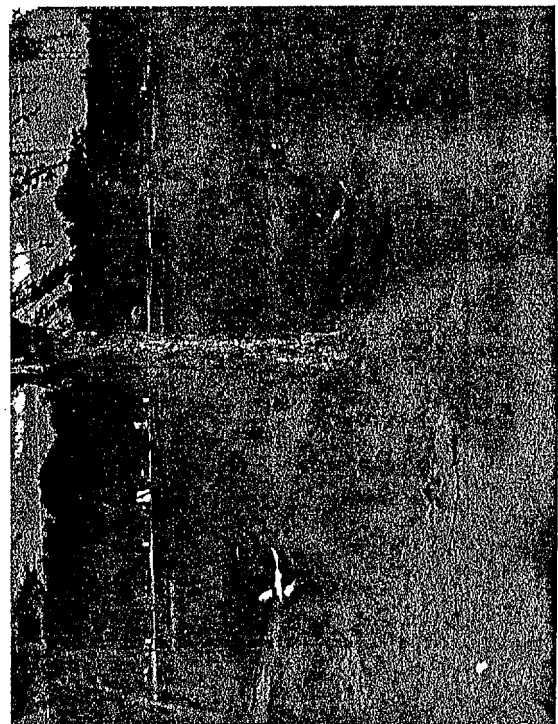
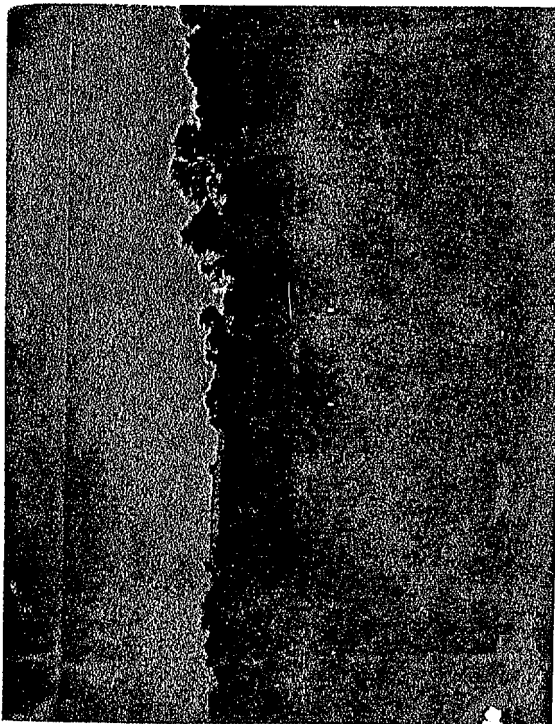
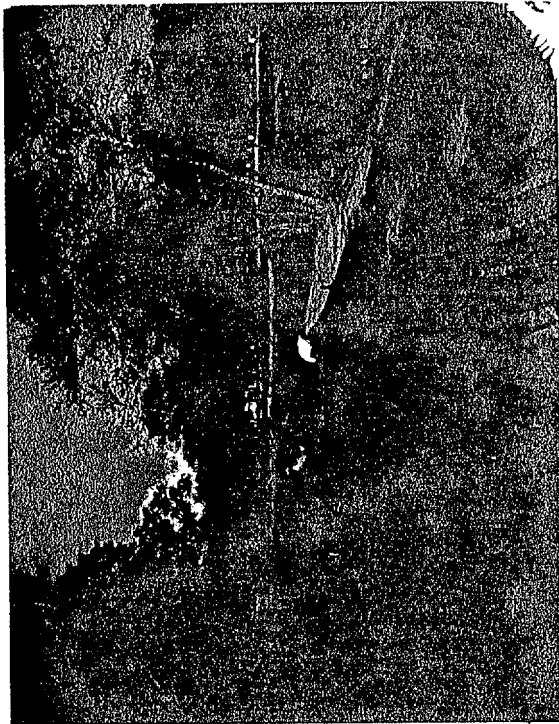
6.





# TAB B





# TAB C

POST-SESSION INTERVIEW

REMOTE VIEWING (RV) SESSION XXIII

1. (S) Post-session interviews are conducted after the completion of a session to provide the selected remote viewer with the opportunity to express himself concerning his viewing experience.
2. (S) #47.5 felt that his inability to relax and concentrate was due to two principle factors. First, he has been involved for some time with the personal problems of other individuals. This has left him emotionally drained, physically exhausted, and psychologically tense. Second, there was a lack of motivation in conducting this session. Personnel involved were almost nonchalant prior to the session. There was no atmosphere of exuberance engendering a will to succeed at remote viewing the selected target.
3. (S) #7.5 was psychologically depressed the whole day of the session. He was unable to favorably contribute to the remote viewing session. #47.5 may have sensed #7.5's depression which, in turn, may have contributed to the low target correlation of this session. #47.5 has done very well in the past.