

~~SECRET~~

Approved For Release 2003/09/11 : CIA-RDP96-00788R000900640001-3  
ORCON/NOFORN

INSCOM

GRILL FLAME

PROJECT

SESSION REPORT

CLASSIFIED BY: Director, DIA  
REVIEW ON: 31 Jul 99  
EXTENDED BY: Director, DIA  
REASON: 2-301-C (3) (6)

Approved For Release 2003/09/11 : CIA-RDP96-00788R000900640001-3

~~SECRET~~ GRILL FLAME

~~SECRET~~

## SUMMARY ANALYSIS

## REMOTE VIEWING (RV) SESSION XCVI

1. (S) This report provides documentation of a remote viewing session conducted for training purposes to enhance a remote viewer's demonstrated ability.
2. (S) The remote viewer's impressions during this session did not correlate with the randomly selected target location. The viewer gave a very detailed and beautiful description of the Grand Canyon and it is well worth reading carefully. There is no doubt in the interviewer's mind that this remote viewer was actually visiting the Grand Canyon. However, the selected target was Fort Huachuca, Arizona (see TAB B). Before starting this session, the viewer mentioned that he felt nervous. He couldn't understand why he had this feeling of nervousness. There were no personal or job related problems on his conscious mind and he felt no apprehension towards this session. This was the first of three targets that he viewed on this day. His impressions had very little or no correlation with any of these targets (see Sessions XCVII and XCIX). Perhaps this feeling of nervousness for no apparent reason is an indication that this viewer's probability of success is greatly reduced for an as yet undetermined period of time.
3. (S) The protocol used for this session is detailed in the document, Grill Flame Protocol, AMSAA Applied Remote Viewing Protocol (S), undated.
4. (S) Following is a transcript of the viewer's impressions during the remote viewing session. At TAB A are drawings made by the viewer reference his impressions of the target site. At TAB B is a map and description of the target location.

~~SECRET~~

~~SECRET~~

TRANSCRIPT

REMOTE VIEWING (RV) SESSION XCVI

#14: This will be a remote viewing session (edited for security).

PAUSE

All right, #1, the time is now 10 o'clock and I have a set of coordinates here that I will read to you.

31 degrees, 34 minutes, North  
110 degrees, 21 minutes, West

PAUSE

Go to that location and describe what you see.

PAUSE

#1: Beautiful colors. All the colors of the red spectrum.

PAUSE

+01

I can tell you what this target is before I describe it. Because I've flown over it once almost in the same view I've got right now. It looks like the Grand Canyon. Grand Canyon State Park or something. Huge crevaces in the ground. There's a beautiful river running in the bottom. Its a beautiful sight. I see small trails leading down the side of the canyon wall. Offshoot canyon to the left and right sides of the main canyon.

PAUSE

Very pretty. Its breathtaking. All the colors of the rainbow. Its definitely got to be the Grand Canyon.

PAUSE

That's all I can say about it. I mean, how do you describe. . . . Jesus! This is as good a view as I had from the plane when I flew over it.

~~SECRET~~

~~SECRET~~

#14: Do you have a feel as to where along the Canyon you are located?

PASUE

+05 #1: Yes. I keep wanting to say yosemity, but I don't . . its not right. I feel like that's analytic. Right smack dead center of the most beautiful part of the whole canyon. In the park. A place where everybody goes to see Grand Canyon. I see a lot of trails. A river in the bottom. Some park type buildings.

Its just incredibly beautiful, it really is. Just breathtaking.

#14: Well, go ahead and wander around and if you find anything interesting, let me know.

+06 #1: Wild mules. I see mules with no harness or anything just standing on the trails. I get the feeling there's not a herd of them but there's quite a few donkeys or mules. Its just incredible.

+07 This particular, this particular section has got to be the most beautiful part of all of Grand Canyon. Its very colorful and I feel like its very cool there. Its not hot like you would expect it to be in the summer. So it must be a very high part of it. . the canyon. Very, very deep section of the Canyon. Afraid to fly over it. Ha ha ha

PAUSE

+08 Yeah, its the center of the park, Frederal Park. Its the part of the Grand Canyon everybody goes to. I see a lot of cars parked in a kind of a funny looking parking area a few miles from the Canyon. Definitely Grand Canyon. Definitely.

PAUSE

+10 There's nothing else I could add to it except that I wouldn't mind staying there all day.

#14: Ha ha ha

#1: Its just so beautiful.

#14: Well, we've got some time. Go ahead and stay there for a while.

PAUSE

~~SECRET~~

~~SECRET~~

#1: I can tell you one of the park buildings is in an "L" shape. Its a log structure. Green roof. Appears to be some kind of corral nearby. Some leanto type structure for animals. Some nice, dusty, well designed, fine path that goes down past the stalls towards the canyon. Tall trees on both sides. Very crisp morning air.

+11

PAUSE

I can see for 30 miles in three directions from the edge of the lookout. There's no where else in the world you get a view like this.

+12 I see a waterfall. I didn't know they had a waterfall in the Grand Canyon.

#14: Is this waterfall associated with the river or could it . . .

#1: No. No. The river's in the bottom of the Canyon. This really sounds strange, but I feel like I'm upside down or the water's pulling up or something. Yeah.

PAUSE

I see some rock formations and there's just water falling there. A stream of water. There's a roaring noise in the background.

PAUSE

Really fascinating.

PAUSE

+15 Its really pretty. Its really pretty. There's tourists there. You know, wearing those funny hats tourists wear. Cameras, a lot of cameras. I get the feeling its a bit early for them though.

PAUSE

#14: Are you ready to challenge your artistic abilities?

#1: Yeah. Its going to be a hell of a challenge too; I'll tell you.

#14: Well, we've got some colored pencils there.

PAUSE

~~SECRET~~

~~SECRET~~

- #14: Let me know when you've got enough light.
- #1: That's fine. The problem is I could never do it justice.

PAUSE

How do you draw the Grand Canyon? I swear to God.

PAUSE

Its like the river that runs through the sand.

PAUSE

Its like the off-shoort canyon is going back up the side. I get the feeling like there might be small streams or something (not audible) here.

PAUSE

There's just like the predominant lookout somewhere to the right. And there's just bands of color through the rocks. Almost like they were painted in stripes. And its all the golds and the reds and the oranges. Really a magnificent view. That's Page 1.

Then there's like a . . . some kind of a . . . an "L" shaped log structure with a porch on the front. For some reason, I associate with a park type thing. Back here was like some leantos like stalls like you would put animals in. Like the corral type fence. . . going around it and a trail running off this way. Tall trees around it. There's like a large parking area somewhere out here. The Canyon's back this way. Its on Page 2.

And there's a . . . I got the funniest feeling I was upside down for some reason but there's a very thin stream of water. I get the feeling it was; I get mixed feelings now. I was either upside down or it was falling up one of the other. There was a . . . This was rock. I just got the feeling there was a roar associated with it and sort of a background roaring noise. Just something that didn't ring. . . didn't ring true about the rock . . . for some reason. There's this water fall, like this.

~~SECRET~~

~~SECRET~~

#14: I'm going to open this window and see if we can't get a little warmth to this place. I think we're down to about 66 degrees in here.

#1: Yes.

PAUSE

That's all I can draw.

#14: You forgot the mules and the donkeys.

#1: Oh! I can draw a picture. . I don't know how to draw a mule. Anybody sees this is going to . . . Ha ha ha ha.

I would call. . . Before I would call them. . I've got to cross out mules and donkeys. I've got to call them burros. . . because they're tiny. I'd call them burros before I'd . . . That;s not a very good burro, but I defy anybody else to draw a good burro.

#14: Okay. On that note, we'll call it the end of the session.

~~SECRET~~

# TAB A



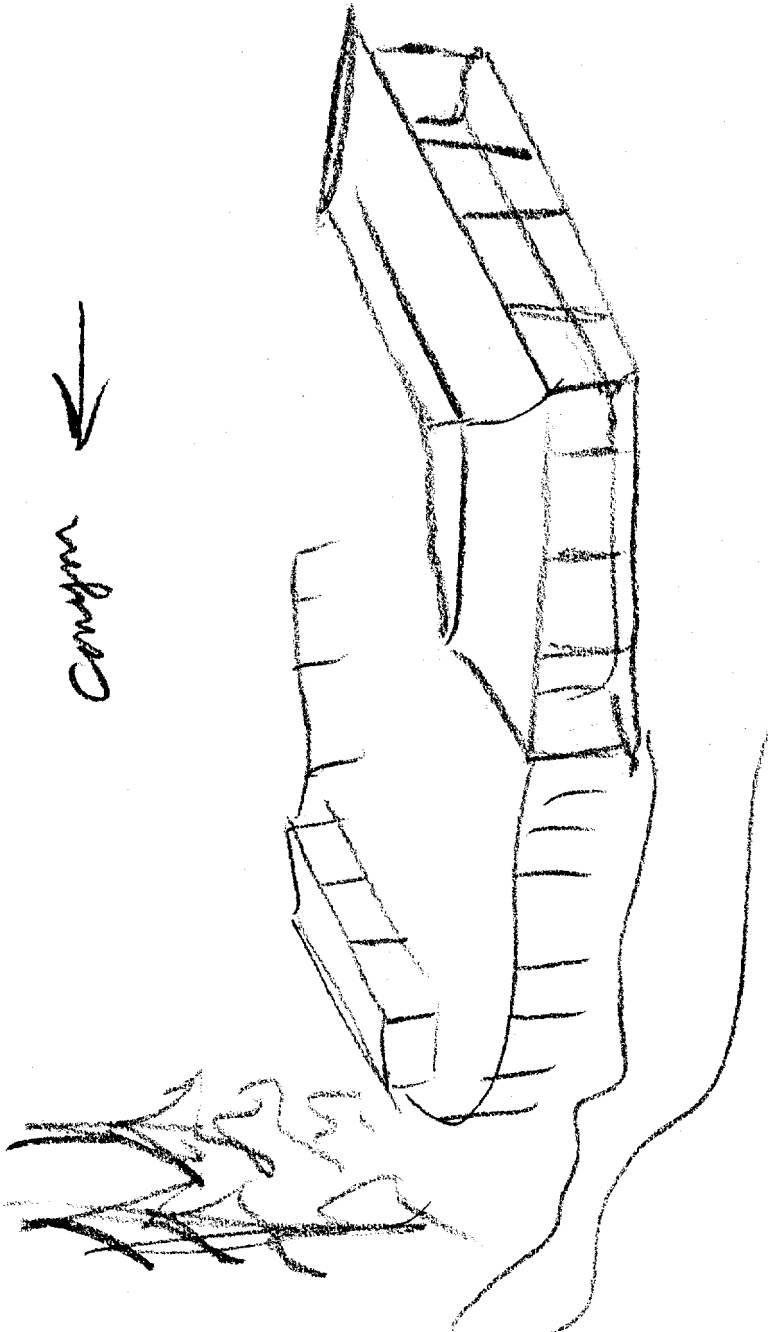


②

*PARISH*

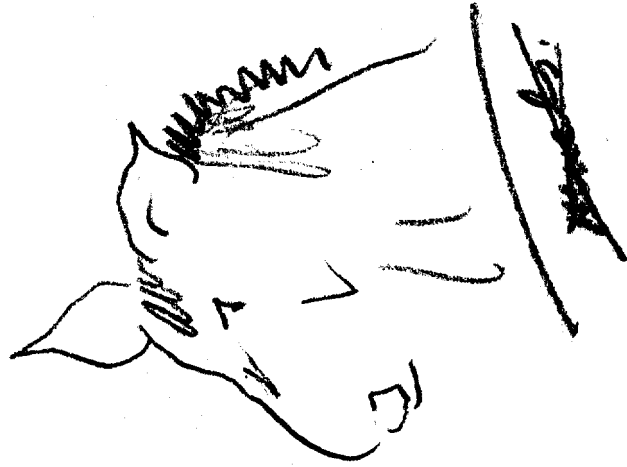


*CONYER*

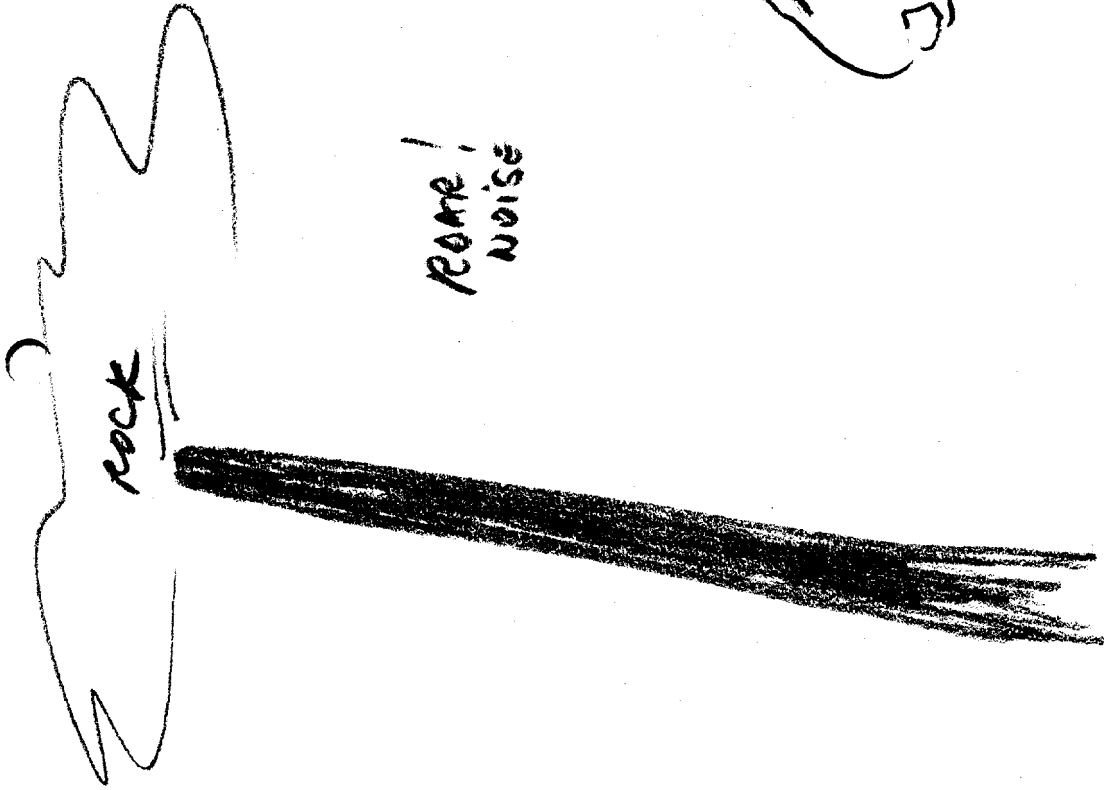


3

Bump



Roar!  
noise



rock

# TAB B

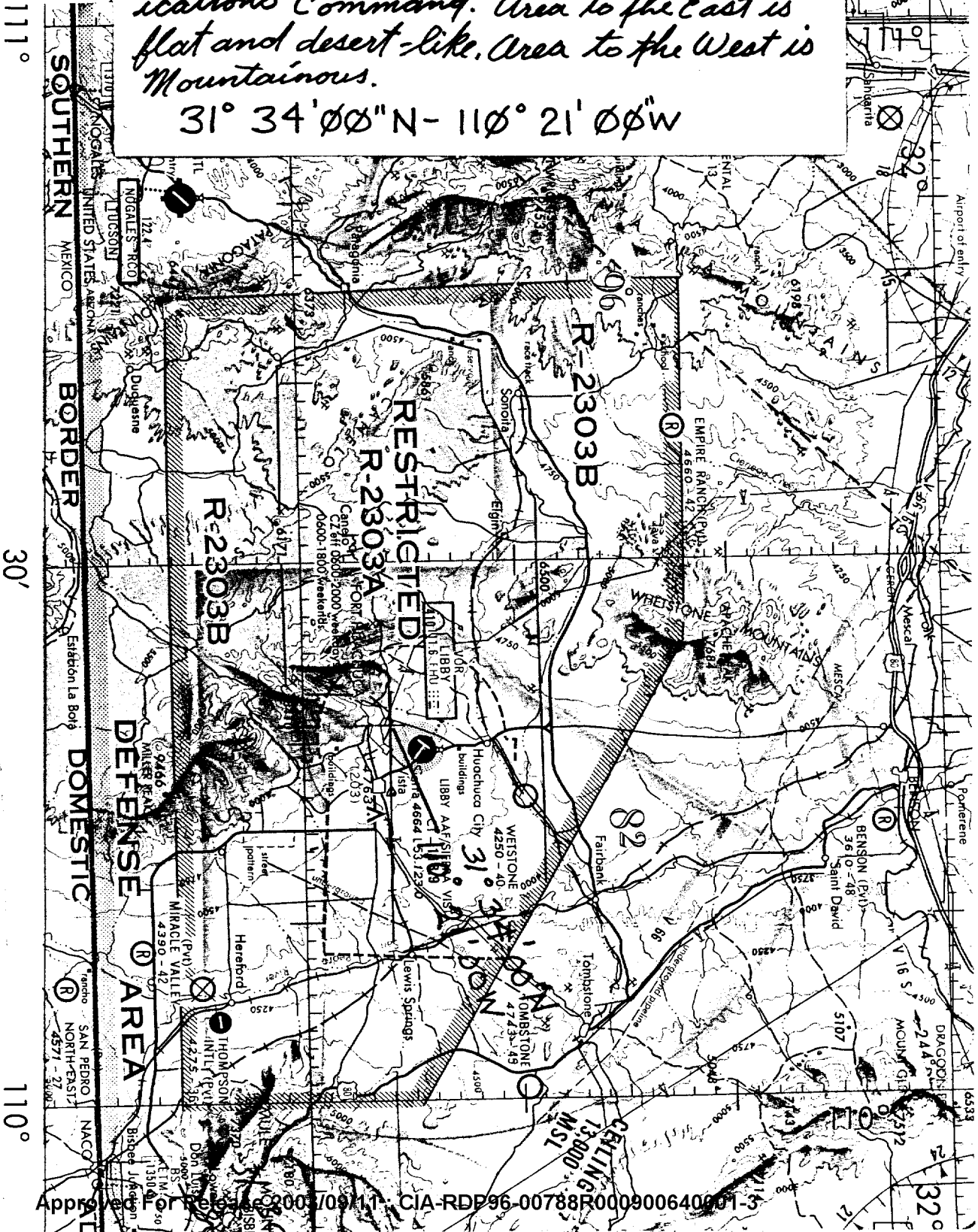
# FORT HUACHUCA

(17)

Approved For Release 2003/09/11 : CIA-RDP96-00788R000900640001-3

Army post located at the foot of the Huachuca Mountains. Home of the Army & Intel School and Communications Command. Area to the East is flat and desert-like. Area to the West is Mountainous.

31° 34' 00" N - 110° 21' 00" W



Referral Review by NIMA/DoD

Approved For Release 2003/09/11 : CIA-RDP96-00788R000900640001-3