

~~SECRET~~
ORCON/NOFORN

INSCOM

GRILL FLAME

PROJECT

SESSION REPORT

CLASSIFIED BY: Director, DIA
REVIEW ON: 30 Apr 99
EXTENDED BY: Director, DIA
REASON: 2-301-C (3) (6)

GRILL FLAME

~~SECRET~~

~~SECRET~~

SUMMARY ANALYSIS

REMOTE VIEWING (RV) SESSION XXI

1. (S) This report provides documentation of a remote viewing session conducted for the purpose of orienting a remote viewer to the protocol which will be used in the remote viewing training program at Stanford Research Institute (SRI), Menlo Park, California.
2. Target correlation during this session was relatively low in comparison to this remote viewer's past experience. While the remote viewer's verbal descriptions show little target correlation, his drawings can be matched to geometric forms at the target site. This demonstrates a classic case of right/left hemisphere function with the verbal (left) providing analytical data modulated by "noise" and the artistic (right) providing raw imagery which matches the target in some ways. The remote viewer was disturbed by ambient room noise throughout the session and found it hard to concentrate and focus on his imagery. He did, however, attain a deeply relaxed physical state and an expanded state of mental awareness. His RV dysfunction appeared to be the result of inability to concentrate during his relaxed, expanded state.
3. (S) The protocol used for this session was modified from that which will be used in later training. The protocol to be used in later training is detailed in the document, Standard Remote-Viewing Protocol (Local Targets) by Harold E. Puthoff and Russell Targ, November 1978. This session's protocol was modified in that a randomly generated, preselected target was not used. In lieu of a randomly generated, preselected target the "outbounder" or "beacon" simply chose a site which, in his opinion, was unique and identifiable.
4. (S) Following is a transcript of the viewer's impressions during the remote viewing session. At TAB A are the drawings made by the viewer reference his impressions of the target site. At TAB B are photographs of the target site. At TAB C is a post-session interview.

~~SECRET~~

~~SECRET~~

TRANSCRIPT

REMOTE VIEWING (RV) SESSION XXI

TIME

#66: This will be a remote viewing session. (Edited for security.)

PAUSE

#66: Okay, #11, #20.5 is approaching the target right now. He is looking at the target. He is observing the area. Look at the target with him. . . and describe the area to me.

PAUSE

#11: I keep seeing a bell. I mean a real bell like, you know, like the Liberty Bell.

PAUSE

#66: Okay.

PAUSE

+05 #66: Describe the target area to me.

PAUSE

#11: I can't seem to focus on anything. I had an impression of something. . . round, oval. Reminds me of a spoon.

PAUSE

#11: I see images starting to form but I can't hold it.

#66: Relax and concentrate.

PAUSE

#66: Relax and concentrate.

PAUSE

#11: I sure am getting some odd sensations.

~~SECRET~~

~~SECRET~~

#66: Describe your sensations to me.

PAUSE

#11: There's no way to describe it. I used to . . .
have these sensations when I was a kid. I used
to dream with

PAUSE

+10 #11: Like I can feel. . . I'm something other than
what I am. I don't know what.

PAUSE

#11: Let me try to get the target again.

PAUSE

#11: Whew! The tongue feels like its about ten times
its normal size. Like it weighs about ten pounds.

#66: Just relax and go with the flow. . relax and go
with the flow. Let it happen, relax and go with
the flow. . .

PAUSE

#11: (Long sigh)

PAUSE

#11: I saw what appeared to be a squirrel. But not
even a self-respecting squirrel would be out on
a day like today.

PAUSE

#11: I got the feeling that if (not audible). . .
finally (not audible).

PAUSE

+16 #66: Describe your images to me.

PAUSE

~~SECRET~~

~~SECRET~~

#11: I saw several silhouettes of like, people. But I couldn't see any, any detail. Or who they were.

PAUSE

#66: Tell me about your sensations.

#11: Right now, I'm not . . . no sensations. I'm a . . . trying to catch the images. They just keep flashing by. I can't slow them down. I can't focus them.

PAUSE

#11: I had an impression of cars, like at a used car lot or some type of car lot. Looking at the front, a squarish type grill. Kind of like the Mercedes would have. And I had a feeling of walking around to the left side of me at the door and looking inside. I get the interior. But those, just seem to be impressions.

#66: Okay.

PAUSE

#11: It almost seemed like I got . . . in a . . . sat down.

PAUSE

#11: Now I'm going to try to block that out and just start all over again.

PAUSE

#66: #20.5 will have left the target area by now.

PAUSE

#66: You going to see if you can draw any of it?

#11: Yeah. But, I really don't feel that this was a good session as far as the viewing went. But, a . . . I sure was in some altered state there for a while.

PAUSE

~~SECRET~~

~~SECRET~~

#11: My hands look calm but I sure feel shakey.

PAUSE

#66: Can you tell me a little bit about this sensation that you had?

PAUSE

#11: I said it was a sensation which I remember from when I was a quite young child.

#66: Um hm.

#11: Um. . . It felt that, the size, . . . If it was my . . . Most of this feeling took place around my head and the size of my head was about that large. I could actually feel. . . My tongue just grew about that wide and I feel like it weighed about ten pounds. And then I became very dry. But I felt like I was a solid substance. (Sentence - not audible.)

#66: Did you get any target impressions during those times?

#11: The. . . The biggest problem I was having was all the noise. Every time I would try to focus in on the target or try to see one or something, I seem to be jumping around here. Upstairs, out there, over there. But during the time of these strange feelings, I didn't have any target impressions. You know.

PAUSE

#11: I was deep into something, somewhere. But I had no problem once the; once that feeling passed. Then I started picking up . . . a . . . more solid impressions. I was able to focus on them a little bit.

#66: Okay.

#11: The . . . a . . . The first thing that I had the impression of was . . . actual bell. Shape. (DRAWING)

PAUSE

~~SECRET~~

~~SECRET~~

#11: The second one, I did. . . Shortly after the bell shape thing, I had a . . . all it was is a shape. Very hard to define. It looked like it might have been some type of support or something.

PAUSE

#11: Several times, I had silhouettes of people. . .

PAUSE

#11: I'm just sketching this in kind of a hurry. Number Four. . . looked so much like a squirrel, it had to be.

PAUSE

#11: And Five, I had this shape here that reminded me of let's say, the grill of a Mercedes or some type of car.

#11: Number Six looked like it was kind of a seat or upholstery. That might have been, if indeed that was a car, it might have been inside. Some type of seat. Or at least this. . . drawing right here, this shape.

Seven, I had . . . a shape. . . something like that. This was . . . dark and it was like sitting in the car and looking out, you know, this would be the rear view mirror. That's the impression I had.

#11: I had the impression of, and this one being, a . . . not outside, outside, but on the outside looking at something. Six was looking into something and Seven would be inside. Looking out.

PAUSE

#11: I believe that's about it.

#66: Okay, is there anything else you want to add?

#11: No. Except, I'm very doubtful about this.

#66: Okay. That'll do it.

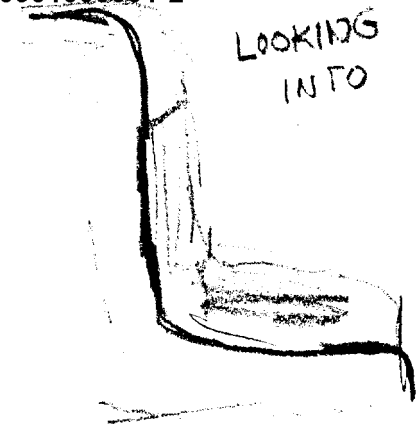
~~SECRET~~

TAB A

1.



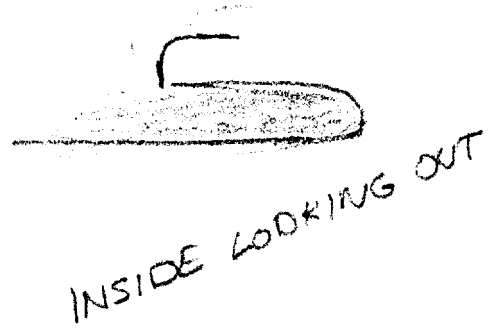
6.



2.



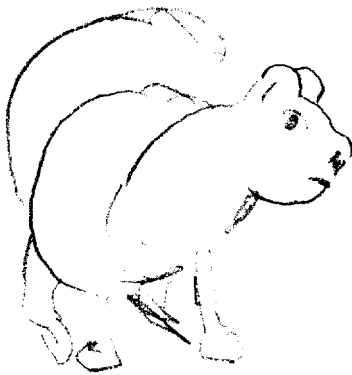
7.



3.

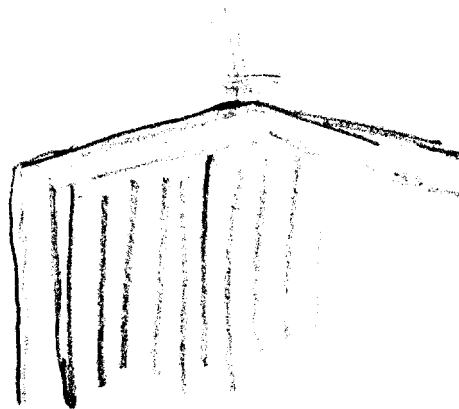


4.

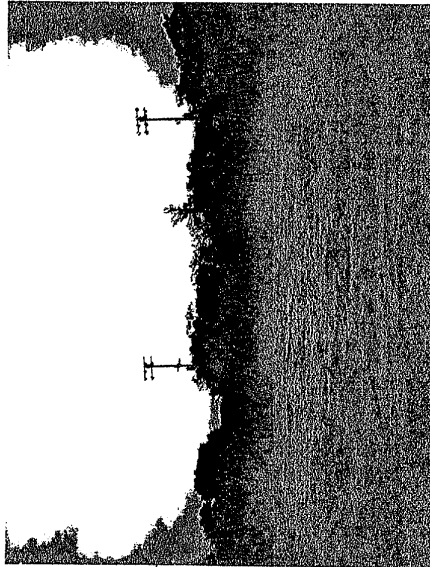
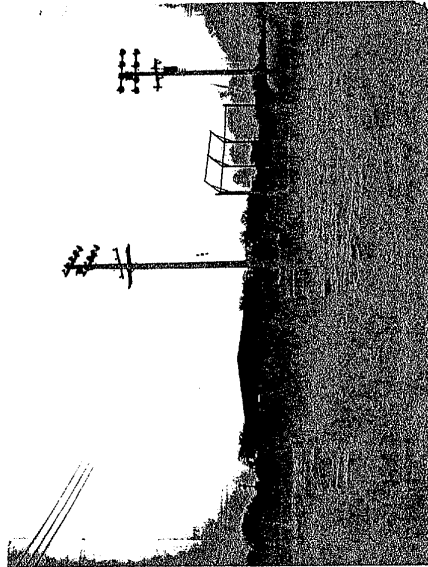
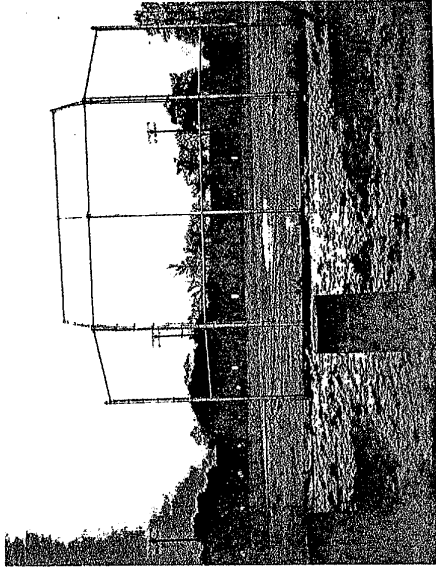


5.

OUTSIDE



TAB B



V. 79 020

TAB C

~~SECRET~~

POST-SESSION INTERVIEW
REMOTE VIEWING (RV) SESSION XXI

1. (S) Post-session interviews are conducted after the completion of a session to provide the selected remote viewer with the opportunity to express himself concerning his viewing experience.
2. (S) #11 recognized the shortcomings of this session. He wants to try doing a session during later hours of the day when there will be less room noise. #11 understands the problems associated with his attempts to analyze his target impressions.
3. (S) The relationship between #11 and #66 continues to grow and mature.

~~SECRET~~