

~~SECRET~~

ORCON/NOFORN

INSCOM

GRILL FLAME

PROJECT

SESSION REPORT

*R-007-79*  
*Copy 1 of 2 Copies*

REVIEW

CLASSIFIED BY: Director DIA  
~~SECRET~~ ON: 2 Mar 99  
EXTENDED BY: Director DIA  
REASON: 2-301-C(3)(6)

~~SECRET~~

GRILL FLAME

~~SECRET~~

SUMMARY ANALYSIS

REMOTE VIEWING (RV) SESSION I

1. (S) This report provides documentation of a remote viewing session conducted for the purpose of orienting a Remote Viewer to the protocol which will be used in the remote viewing training program at Stanford Research Institute (SRI), Menlo Park, California.
2. (S) This session was considered very successful by all participants in that the post-viewing on target analysis provided the viewer with positive feedback. The target site contained features which matched the viewer's descriptions. The Remote Viewer was anxious to conduct another session and was highly motivated.
3. (S) The protocol used for this session and which will be used in later training is detailed in the document, Standard Remote-Viewing Protocol (Local Targets) by Harold E. Puthoff and Russell Targ, November 1978.
4. (S) Following is a transcript of the viewer's impressions during the remote viewing session. At TAB A are drawings made by the viewer reference his impressions of the target site. At TAB B are photographs of the target site. AT TAB C is a post session interview.

~~SECRET~~

~~SECRET~~

TRANSCRIPT

REMOTE VIEWING (RV) SESSION I

#7.5: This will be a Remote Viewing Session. The interviewer will be #7.5; the viewer will be #11. (Edited for security.)

PAUSE

#7.5: Alright #11, let an image form in your mind and tell me about the area where #10.5 and #43.5 are located. (Pause) Tell me, what do you see in respect to where they are? (Edited for security.)

PAUSE

#11: So far, I'm drawing a blank.

#7.5: Let it come. Concentrate on the blank screen. (Pause) Direct your attention to where they are located. (Pause) Tell me, are they inside or are they outside? (Pause) What do you feel about the area where they are located?

PAUSE

#11: Right now, I'm still drawing a blank. I'll try from here to try to get some details. The only thing I can hear is buckets and pails out there now. (ADMIN NOTE: There was a great deal of noise outside the viewing room from janitors.)

#7.5: Um Hum. In the periods of quiet, between the door slamming, footsteps, and the guy mopping the floor; in those periods of silence, just take a quick look at where they are. (Pause) Look for just the slightest impression of an image. Tell me about the flashes in your mind. (Pause)

~~SECRET~~

~~SECRET~~

#11: That noise out there is frustrating.

#7.5: Uh Huh.

PAUSE

#7.5: Okay, it's now quarter after and we are leaving the target.

(ADMIN NOTE: This concluded the 15 minute on target time. #11 started to draw several impressions without talking.)

#7.5: Would you like me to turn the lights on?

#11: Yes. That noise out there is just completely disturbing me. (ADMIN NOTE: Lights are turned on and #11 continues to draw.)

#7.5: Okay, which noises did you find most disturbing?

#11: Footsteps, the door, and the bucket, then later on there was one vehicle out there and someone was out there scraping a shovel.

#7.5: You felt that you weren't able to concentrate with the noise?

#11: Yes, it is difficult, because every time I would start getting an impression of something and something happened outside, I'm just, you know, just pick up on the scrape. It sounded like somebody was out there scraping the snow, and of course, you could tell, the bucket. (Pause) And, I really didn't get anything strong.

#7.5: Okay. Will you talk to me a little bit about what your drawings are here.

#11: This is either a circle . . . .

#7.5: Okay, put a one in a circle down there. Okay, we are talking about number one.

#11: This is either a circle within a rectangle (Pause) which this would appear to be the top. This impression here. Either that or its a half circle in a triangle.

#7.5: Okay.

~~SECRET~~

~~SECRET~~

#11: Ah, the second one. This one, because of the shape.

#7.5: Put a number two down there so on the tape we understand that you are talking about number two.

#11: Right, I did have some difficulty with this one. The shape, all of a sudden my analytical side said, looks like a ship. I just left it the way I saw it. Its got kind of a -- whatever the shape is. Or maybe even a rowboat or something. For some reason, it seems to be wooden. If it was a ship. Other than that it was just a shape.

This almost seemed like a stand of trees or something. Perspectively.

#7.5: Put a little number three by that drawing so that we know. And, are we looking away, like a railroad track or something?

#11: Right, right, perspective. They have the shape of trees, but they would have leaves on them. Perhaps, maybe, I don't know.

#7.5: Or bushes?

#11: Possibility, possibility. I didn't define anything in long stems or trunk.

#7.5: So there was some kind of foilage here.

#11: It seemed to be.

#7.5: It seemed to be.

#11: It seemed to be. I really couldn't tell. All I could tell is the shape.

#7.5: Okay.

#11: Which kept repeating itself, kind of.

#7.5: Off into the distance like.

~~SECRET~~

~~SECRET~~

- #11: And four is just an impression that I had of water. Whether it be a pond or something, I don't know. It was just an impression I had -- it was a pond of water or something of water.
- #7.5: Now, as these images came to mind, you say you were interrupted by the sounds; did it seem to turn it off or what? I'm trying to understand what happened.
- #11: It didn't turn it off. As I felt that I was focusing on something, it just completely distracted it. And then I would try to get back and then I would get a few flashes here and there and then something else would happen and it would be a distraction. But I really - - - I really didn't get anything hard that I could identify. Just impressions and shapes. Actually, I was very apprehensive about starting this thing off.
- #7.5: Well, a lot of what went on here was to teach you that there is not going to be any magic going on in this room. I'm not going to suddenly plug you in to some special machine that will enable you to do this. You had to go through these first sessions to know what it was like. Just so that you would understand that. There's a lot of apprehension now and the next time that you come back you will understand exactly what's going on.
- #11: I think the biggest problem, is trying to relax and stabilize yourself. Of course, if you work at it you can block out the noises. Its just that my attention was drawn to - like when I heard that cling of the bucket out there. I formed an image of somebody with a bucket getting ready to mop the floor. Like the scraping I heard out there, I formed an image of somebody out scraping the snow.

(ADMIN NOTE: There were personnel scraping snow at the target area during the on target time. They were working with a large dump truck, a portion of which #11 later thought matched his drawing #2.)

~~SECRET~~

~~SECRET~~

#7.5: you started remote viewing whatever you were hearing.

#11: Right. Rather than . . . . It seemed the harder I would try to block that out and concentrate on the outbounders the more difficult it was to concentrate on them. (Pause)  
But, I would say the strongest of the images was the first one.

PAUSE

#7.5: Number one. How would you describe that again?

#11: It was either a circle within a rectangle or a square. Or a half circle within a triangle. It seemed like this much was very clear and this much may have suggested that.

#7.5: Where the dotted lines are it was not clear but you think that it suggested that it may have been a continuation. Okay.

#11: I also found it was very difficult trying not to concentrate on the outbounders. (ADMIN NOTE: #11 later explained that the comment was in reference to the relaxation period prior to time on target.)

#7.5: On the people themselves?

#11: Right.

#7.5: Did you get any perceptions about the people?  
(ADMIN NOTE: This was asked in reference to on target time. AT this time the Interviewer did not understand #11's previous comment.)

#11: I tried not to. Because you know that's . . . .

#7.5: Even though you were trying not to, was there anything that did come through? (ADMIN NOTE: Reference on target time.)

~~SECRET~~

~~SECRET~~

#11: I think my impression of the water -- it wasn't anything like a river or anything that was flowing.

#7.5: Standing water?

#11: Yeah, kind of like a pond or something.

#7.5: Did you get an impression of anything above or below this? (ADMIN NOTE: Reference Drawing #3.)

#11: No.

#7.5: And you are not sure whether this is foliage or not.

#11: No, all I saw was a series of shapes.

#7.5: A series of shapes.

#11: Perspectively, they seemed to go off in the distance. They reminded me more like trees. Then again, I tried not to analyze it.

#7.5: Good. So then it is just a series of receding similar shapes.

#11: Right, and it would be kind of a foliage type shape. Cloud shaped.

#7.5: Okay.

#11: And they appeared to go off into the distance. (Pause) I did get a feeling for something though.

#7.5: As I see in your first drawing of number three you drew something down here at the bottom. At this top drawing let's put 3a so that's kind of a duplicate - the second time you drew three. Put 3a down there so it won't be interpreted as being the same thing as three.

PAUSE

~~SECRET~~

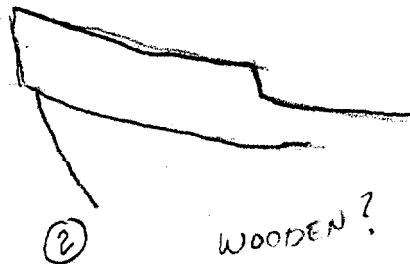
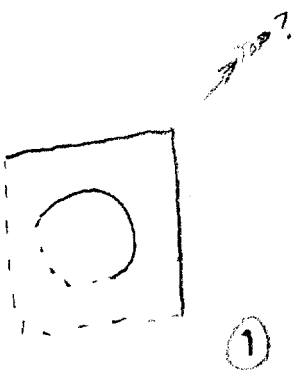
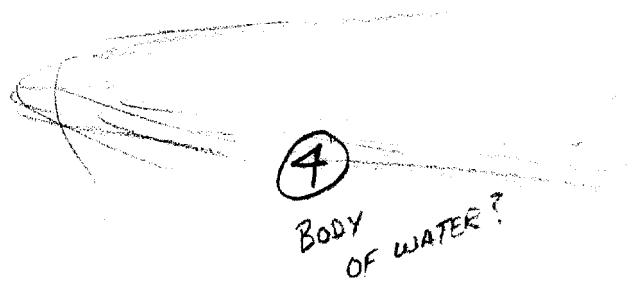
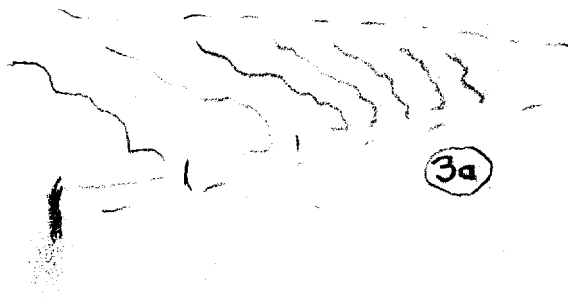


~~SECRET~~

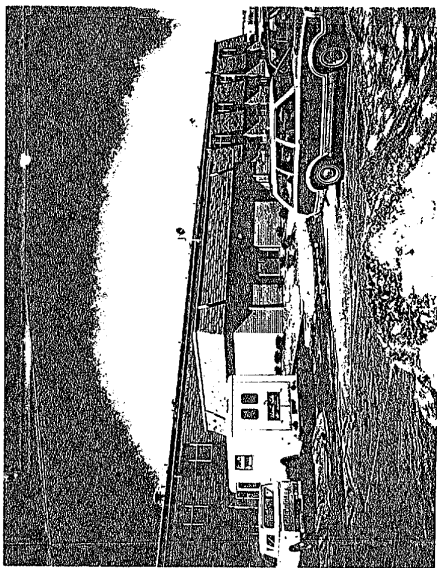
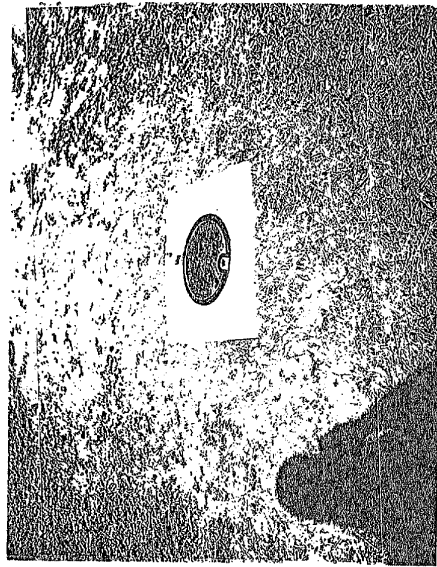
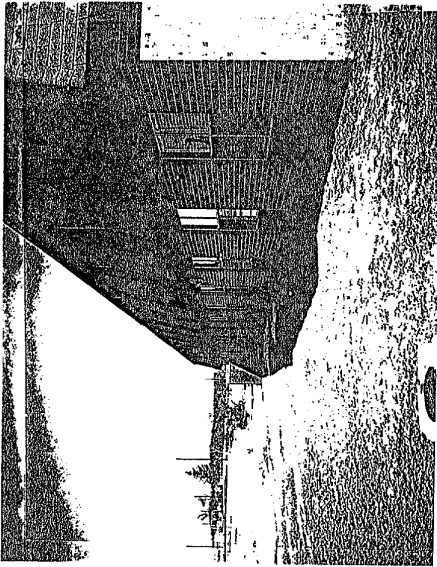
- #11: This, I kind of had a feeling. (ADMIN NOTE: Reference Drawing #3 and 3a the short vertical line in the foreground.)
- #7.5: Of the water?
- #11: When I saw this, but then again it may have been associating it with the ship. (ADMIN NOTE: The impression of water in the foreground of the "series of receding similar shapes".)
- #7.5: It may be analytical.
- #11: Right. But I; that's what, perhaps made me think of the ship or something or a boat. And then I picked this up later as a feeling or an impression. (ADMIN NOTE: #11's strongest impression of a "circle within a rectangle" was actually a cover plate for a water meter which is a predominant feature in the foreground of a "series of receding similar shapes".)

~~SECRET~~

# TAB A



# TAB B



# TAB C

~~SECRET~~

POST SESSION INTERVIEW

REMOTE VIEWING (RV) SESSION I

1. (S) Post-session interviews are conducted after the completion of a session (usually the following day) to provide the selected Remote Viewer with the opportunity to express himself concerning his viewing experience.

2. (S) During this post-session interview #11 expressed his enthusiastic desire to do more remote viewing. He stated that he was unsure at first how one would actually relax and focus his awareness. But after visiting the target site and judging for himself the results of his viewing, he ardently wanted to try again. #11 realized that he didn't verbalize during the on target time. #11 was somewhat disturbed by the ambient noise associated with the viewing room but thought he would be able to get used to the noise.

3. (S) The Interviewer and #11 agreed that the Interviewer should encourage #11 to verbalize more during the on target time. #11 and the Interviewer were compatible throughout the session as evidenced by the statements of both during the post-session interview. A positive, reinforcing experience was had by all participants.

~~SECRET~~

~~SECRET~~

## TRANSCRIPT/INTELLIGENCE CORRELATIONS

TRANSCRIPT DATA (ABSTRACT)	TARGET CORRELATIONS
<p>1. "This is either a circle within a rectangle (Pause) which this would appear to be the top. Either that or its half circle in a triangle" - - - -            "It was either a circle within a rectangle or a square. Or a half circle within a triangle. It seemed like this much was very clear and this much, may have suggested that."            (Referring to the dotted lines).</p>	<p>1. <u>Sketch correlation.</u> There is a round metal cover for a water meter set in a square cement pad on ground level at the target area. It appears as a half circle in a photo taken at the target. A second photo of this object taken after the RV session is also attached at TAB C.</p>
<p>2. "The shape, all of a sudden my analytical mind said, looks like a ship. Or maybe even a rowboat or something."</p>	<p>2. <u>Sketch correlation.</u> There was a large dump truck at the target location. The portion of the truck bed that extends forward over the cab for protection is generally of the shape of Sketch Item #2.</p>
<p>3. "This almost seemed like a stand of trees or something. Perspectively."            "They have the shape of trees, but they would have leaves on them."            "I didn't define anything in long stems or trunks."            "All I could tell is the shape - --which kept repeating itself, kind of."            "All I saw was a series of shapes.---And they appeared to go off in the distance. I did get a feeling for something though."            (Referring to vertical line in both Sketches #3 and #3a).</p>	<p>3. <u>Sketch correlation.</u> The mansard roof with inset second story windows creates a perspective view of receding similar shapes. The short vertical line in both sketches is located correctly to represent the corner of the building and/or the position of the water meter cover mentioned above.</p>
<p>4. "I think my impression of the water---it wasn't anything like a river or anything that was flowing."            "---kind of like a pond or something."</p>	<p>4. <u>Sketch correlation.</u> The parking lot has some standing water and snow piles, but the pavement is generally dry. The perceived shape resembling the prow of a ship (Item 2, above) has possibly forced the perception of water by association.</p>

~~SECRET~~