

~~SECRET~~

INSCOM  
GRILL FLAME  
PROGRAM

SESSION REPORT

CLASSIFIED BY:MSG,DAMI-ISH  
DATED:051630ZJUL78  
REVIEW ON: Feb 2001

NOT RELEASED TO FOREIGN NATIONALS

~~SECRET~~  
SECRET

~~SECRET~~

SUMMARY ANALYSIS  
REMOTE VIEWING SESSION 858

1. (S/NOFORN) This report documents a remote viewing session conducted for training purposes only.
2. (S/NOFORN) Post session analysis of the target viewing revealed little or no correlation. The viewer was disappointed, but realized what his problems were. The viewer suffered a great deal of stress during the hours prior to the session. He complained of a sinus headache during cool-down, during the session and during the drawing phase. He also appeared to be hyperactive during the entire period. Training goals (RH TGT descriptors) were not adequately achieved.
3. (S/NOFORN) The protocol used for this session is detailed in the document Standard Remote-Viewing Protocol (local target) by Harold E. Puthoff and Russel Targ, November 1978.
4. (S/NOFORN) Following is a transcript of the viewer's impressions during the remote viewing session. At TAB A are drawings made by the remote viewer reference his impressions of the target site. At TAB B are photographs of the actual target site.

NOT RELEASABLE TO FOREIGN NATIONALS

~~SECRET~~

~~SECRET~~

TRANSCRIPT

REMOTE VIEWING SESSION 858

#66: This will be a remote viewing session for 1430 hours, 9 February 1982.

PAUSE

Focus your attention now, focus your attention solely and completely on today's target. Picture in your mind #63's face and #01's face and explore the target with them as they are doing now. Concentrate and describe the target to me.

PAUSE

#25: Have a long, thin parking lot. Seems like an outside toilet and pissed 'cause they're outside.

#66: Don't talk to me. Just describe the target.

#25: Getting an impression of a roof, wood, 2 by 4 construction. Upside.... down on a V shape ...asphalt shingles. Think that's just a cover house, not a building. It's like a...just a roof out there.

#66: Describe your perspective view. Describe where you are.

#25: Looking ahead, feeling northwest,

#66: Describe #63's location.

#25: He's underneath it. But, underneath it's open ...ceilings just..open beams.

#66: Describe the activity at the target.

#25: I'm not getting much. Thought I sensed a car going by fast, but I'm not getting any activity of people. Saw a woman's face, vague, vague. I can't bring her back...getting glimpses of it. She's got her hair pulled back tight from her face.

~~SECRET~~

~~SECRET~~

#66: Describe #01's activity.

#25: He's just standing around it. It, one of the supports for the roof...this palm of his hand...

#66: Describe the surface on which #01 is standing.

PAUSE

#25: It's a concrete base....something soft over it. ...softer than concrete, there's a little cushion. Just saw a straight, white blind. I don't know what that means.

#66: Describe #63's activity.

#25: Well, I get the impression #63 is leaning on a post. One of 'em got something to eat, I think. Eat or drink. It's like a concession stand. Keep wanting to put him in a ball field. May be boards half way up this thing. They go..... up and down instead of lying horizontal.

#66: They go up and down.

#25: Yeah. I mean they (mumble) one ends on the ground ....one ends up vertical.

#66: That's fine. Don't talk to me and get involved in that. All you have to do is describe. Now, #01 has a message for you. Describe the message to me.

#25: Get me out of here. That's what he's saying. That's not the message though. I think he's forgotten the message. All he's concerned with is leaving there now. It's dumb to be where they are.

#66: Describe the imagery which leads you to that statement. Describe.

#25: They're outside in the rain. It's cold. There's no reason for them to be there. Nobody else is there.....See a stop light.

#66: Okay. I have no further questions about the target.

#25: Let me get that message from #01.....

~~SECRET~~

~~SECRET~~

- #25: The message doesn't mean anything. I don't know what the message is, but it has no relevant.....don't mean anything to anybody.....to me anyway.....just sort of wishing me well, or.....
  
- #66: Remember everything you have perceived in its complete detail. You may prepare now to draw your perceptions of the target.

~~SECRET~~

~~SECRET~~

## REMOTE VIEWING SESSION 858

(DRAWING NARRATIVE)

#25:

Okay. I'll describe drawing 1. Drawing 1 is the first impression. Inside the curly line is to sort of depict how much of the image I saw and how it was just sort of suspended in space. Like looking through a cloud with a hole in it. I didn't see anything on the other side of the..... on the outside of the squiggly circle or squiggly square shape, like in the drawing. This V shape was just this way made out of wood 2 by 4s and I believe that it was part of a roof, but that came right away, later. The first impression was of the, but it was...well, it was almost at the same time that I felt like it was a roof. So, I've drawn a line off diagonally here to show that it was connected to something. I believe it could be a roof.

Drawing 2 is what that figure became, the 2 by 4s and the V are shown in drawing 2, labeled 2 by 4. The ceiling, roof is made of asphalt tiles. Inside of the ceiling was board with beam construction in there. I'll draw a little extra lines to make it look like beams. They were sitting on some sort of support, I believe it was wood, 4 by 4 size roughly. You got through there, you got something to eat there, I think. The sides that I've drawn and I see that my drawing is not in perspective at all, that it's been screwed up in proportion. The back looks wider than the front in the drawing. I don't know why. I think that's just my lousy drawing. The wood sides went up vertically instead of horizontally like you would normally see wood, buildings laid. The floor was concrete. I believe with a soft cover I've written down here. And, I have had to fight off the temptation to say that it was soft concrete. I drew in these steps, but I don't recall seeing those steps in the session. But, for some reason they were necessary in the drawing part. This may be connected to something over in the direction of a hill here. Connected to something.

#66:

Okay. This little drawing that you've made of something here on 2 you feel is connected to something else?

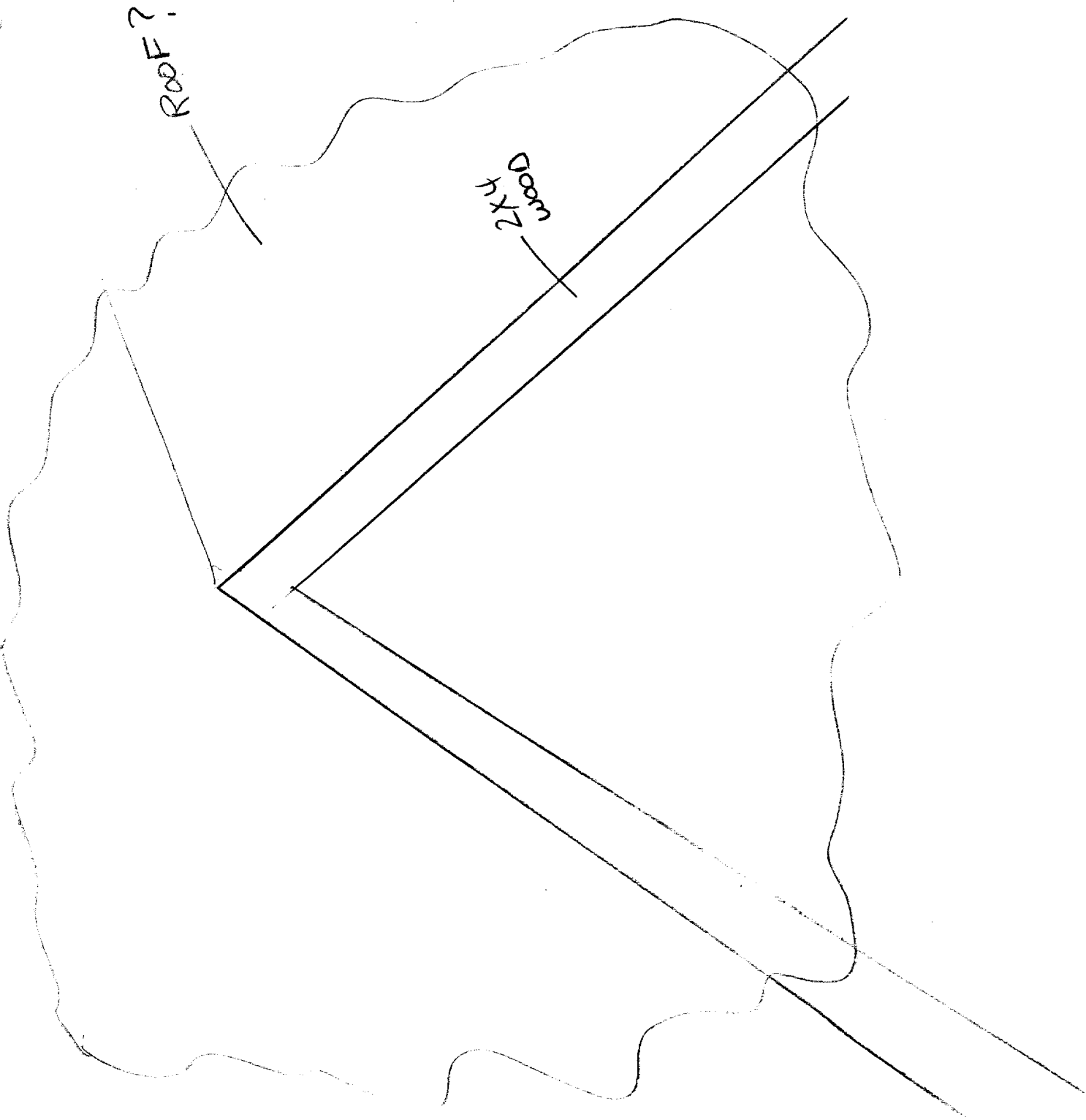
~~SECRET~~

~~SECRET~~

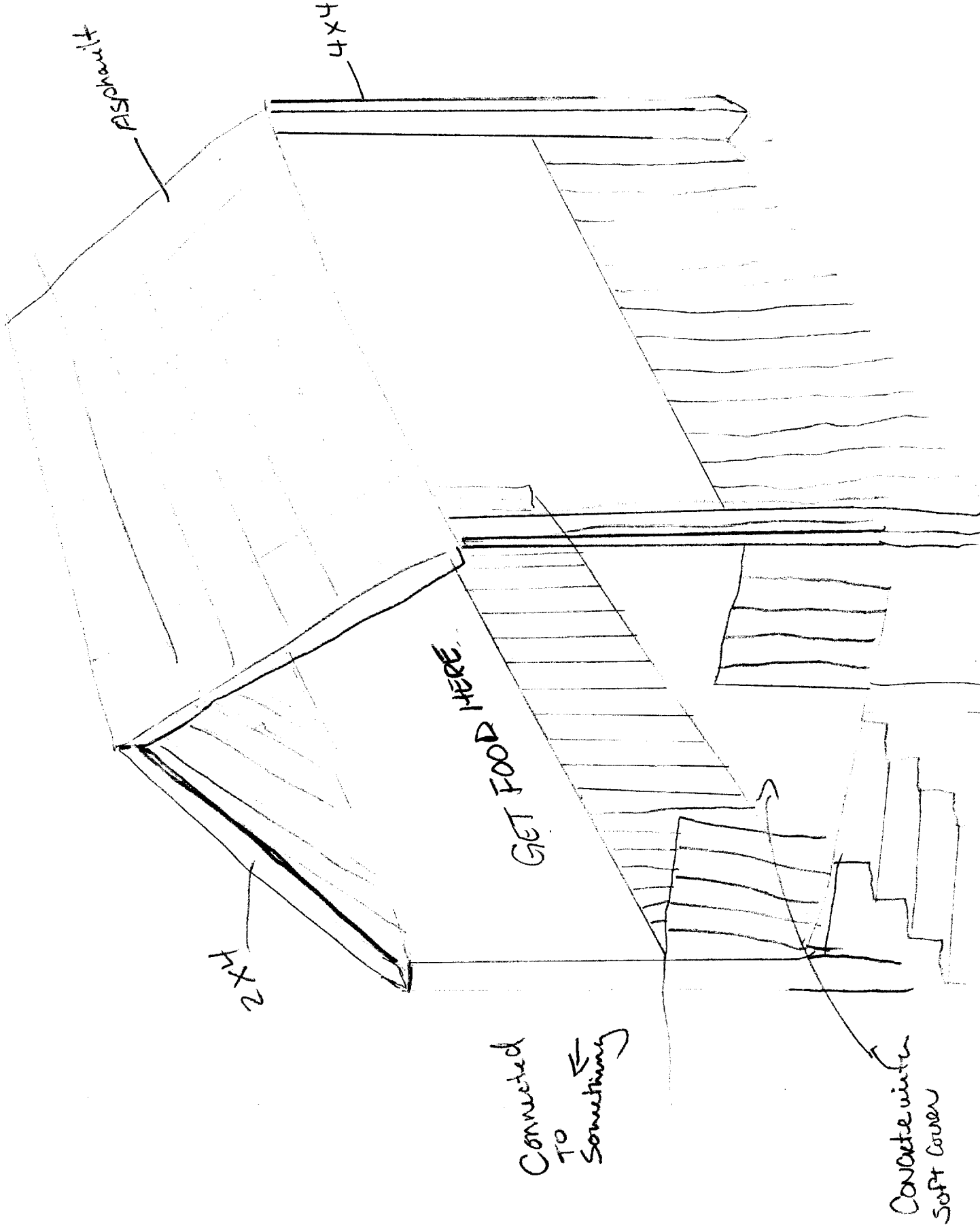
- #25: Yeah. Because you just wouldn't buy food in space there. That's the only reason I think it's connected to something. That may be analysis in overlay. Anything else on this drawing?
- #66: No. I'd like to know.....
- #25: I'd like to put my direction down here. Okay. The direction from here, I believe the target was southwest. I have no idea on distance.
- #66: Now, you said before the session that you had a headache that was bothering you. Did that continue through the session?
- #25: Parts that came and went during the session, but it didn't seem to be a major point. All I had to do was say I didn't want it, and it went away.
- #66: And, from the standpoint of confidence, how do you feel about your performance in this session?
- #25: Well, I don't know. I think that I might be right on the thing with food. That somehow this target is connected with food somehow. But, that may be it. I don't know.
- #66: I want to identify with your emotionality about this food thing. What is it that tells you that you think that it does have something to do with food?
- #25: It seemed to me, when you asked me about what #63 was doing or something like that, I got the impression that he or #01 was considering food. It seemed like a hot dog, but I don't know why in the world they would eat a hot dog right after lunch. Both of them just had lunch.
- #66: Okay. Anything else you would like to add then?
- #25: Nope.

~~SECRET~~

①







TAB

