

SECRET

INSCOM
GRILL FLAME
PROGRAM

SESSION REPORT

CLASSIFIED BY: MSG, DAMI-ISH
051630Z JUL 78
REVIEW ON: May 20002

GRILL FLAME

NOT RELEASABLE TO FOREIGN NATIONALS

ORCON

SECRET

SECRET

SUMMARY ANALYSIS

REMOTE VIEWING SESSION #910

1. (S/NOFORN) This report provides documentation of a remote viewing session conducted for training purposes only.
2. (S/NOFORN) The protocol used for this session is detailed in the document GRILL FLAME Protocol, AMSAA Applied Remote Viewing Protocol (S), undated.
3. (S/NOFORN) Post session analysis on target viewing indicates the viewer had a ~~considerable~~ amount of correlation. The viewer's attitude was positive.
4. (S/NOFORN) Following is a transcript of the viewer's impressions during the remote viewing session. At TAB A are drawings and narrative made by the viewer. At TAB B is target cuing information. Also included is available target data.

** Report faced with analysis.*

NOT RELEASABLE TO FOREIGN NATIONALS

SECRET

SECRET

TRANSCRIPT

REMOTE VIEWING SESSION #910

- #66: This will be a remote viewing session for 1000 hours 24 May 1982. It's now time to focus your attention on the target that has been selected for you today. Today, 24 May 1982. I have given you a sealed envelope containing the coordinates to the target and this designates your target for you. Working now with this sealed envelope, relax, relax, and focus your attention solely and completely on the target for today. Focus on the target and describe it to me. Do this now.
- #63: Large open circular feeling, initial gestalt. Very bright.
- PAUSE
- #66: Focus on the target and report.
- #63: I still have a very open feeling. In the distance I see like small island, green vegetation, hills.
- #66: Directly underneath you, however, the target.
- #63: Series of concentric circles, very many, very close to one another..
- #66: Visualize and report.
- #63: I see water, in the front there are several boats.
- #66: Describe behind you.
- #63: Behind, distant from me, is a street, running directly away from me. Residential area..
- #66: Focusing now only on the target, right at the target, free to move now within the target, and report.
- #63: Many small boats, "T" shaped dock, water, water is blue, bright blue....There's an island here, but I don't think that's the target. Target feel's like it is in the water.. 360 degrees surround this water. Target feels like the center of a bay, of this island..blue skies, blue water.
- #66: Focus now ^{on} those symbols, names, writings, sounds which designate this place, one from another and report.
- #63: Lighthouse, lighthouse was there. It's in Pacific.
- #66: Report raw data.

SECRET

SECRET

#63: Blue water, You like come off the west coast of North America.

#66: Report raw data.

#63: This higher overhead view shows North America to right.

#66: Visual sensation?

#63: That's it.

PAUSE

#63: Architecture of house is difficult to explain, modern oriental, old style at same time.

#66: I have no further questions concerning the target designated by the sealed envelope. However, I would like to provide you the opportunity now to explore the target. Go beyond the confines of my questions, become one with the target. Know the target and report.

#63: Dark gray rocks, with green vegetation around it, large rocks.....there's an area, ~~congested~~, Hong-Kong, oriental type area, market type area, congested, many people walking, riding bikes. That's all.

#66: All right. Focus your attention then back on my voice here in the room. With perfect conscious memory of all that you have perceived today. Prepare now to draw the target.

SECRET

TAB

SECRET

DRAWING NARRATIVE

REMOTE VIEWING SESSION #910

- #63: This a narration of my drawings. Drawing #1 shows the island, the island feel is what I've got written. The "T" shaped pier, boats, shoreline, the water and the target. I kept getting nothing, nothing, nothing, nothing from the target. And that's where I got the bright sensation, but other than that I got nothing from the target and that's where the water came in.
- #66: You have a target here in the middle of a nothingness which you call bright, and then later call water, but off in the oblique in, if this page were oriented, that would be, if the page were oriented north, to the oblique off to the northwest, you have a large X shape pattern, which you call a pier and boats mixture, Okay?
- #63: Um-um. And that, I looked off in the distance and I saw an island. And the island appeared as the small drawing in the upper right hand corner of page #1, labeled "a". I saw the island with a lighthouse on it, just as you see it there.
- #66: Okay.
- #63: In this cove, ~~here~~, that you see in drawing "a", where the arrow points to, I believe you'll find this "T" shape pier and the boats and that sort of thing. When I looked further at the island, trying to get an idea of where I was or what it was, I saw the lighthouse, which is on page 2, drawing A. And Page 2, drawing B is a very, very poor drawing of the type of architecture there. It is sort of colonial, oriental sort of feeling, ~~Hawaiian~~ sort of feeling.
- #66: Okay.
- #63: Also, in roaming through this island, I came up to very congested street area, with many people walking and riding bicycles, signs all over the place, ~~market feeling and it seems like downtown Hong Kong or something you'd see, very congested, very crowded, people just going in from shop to shop, that sort of thing.~~
- #66: Other than the Hong-Kong parallel, which is obviously analysis, you know trying to explain it, where else have you seen this type of crowded shopping, lots of signs, people walking around? Where else have you, personally, Have you personally been to Hong-Kong?

SECRET

SECRET

- #63: Mexico. Mexico is where I've seen this same sort of feeling.
- #66: Okay.
- #63: It had the feeling of a under developed area where everybody goes to buy tourist items, for inexpensive prices , much as you would see in Hong-Kong, the Philippines, that sort of thing.
- #66: All right. Now let me see if I can review this. In drawing #1 you have this "X" pattern that you have labeled as boats and you think it's on the water. Associated somewhere with this "X" pattern, which may be an island, you have a tower shaped building, that you say is a lighthouse, although in the drawings between #2 and #1, I can't see where they are connected. You have said in your verbage, that somewhere near this "X" pattern is this tall structure, which you call a lighthouse, thinking that the "X" pattern is a dock and the thing being the lighthouse, is somewhere near there. Okay. Also there are, in looking at the target in general, and if we call the target an area, in looking at that area again, you find a form of architecture that is peculiar.
- #63: Um-um.
- #66: Okay, and what words would you use to describe that.
- #63: Colonial and oriental at the same time.
- #66: Okay.
- #63: Reminds me of the palaces that you would see on Hawaii. The old, I forget the culture, but the King and Queen of Hawaii, you know the native king and queen had palaces and it reminds me of the kind of palaces that they had.
- #66: Okay. And now a third thing , or a third image or impression that you had about the target, we'll call it the target, was a city street of some kind or a shopping area of some kind?
- #63: Yes.
- #66: And you have not drawn that, however, in your words you said it looked like Hong-Kong, you've never been to Hong-Kong, but it reminded you of some other place you've been, which was what?
- #63: Mexico.
- #66: Which was Mexico. Okay, And tell me a little bit about, what is the raw data that makes you say that, What raw impressions lead you to that analysis?

SECRET

SECRET

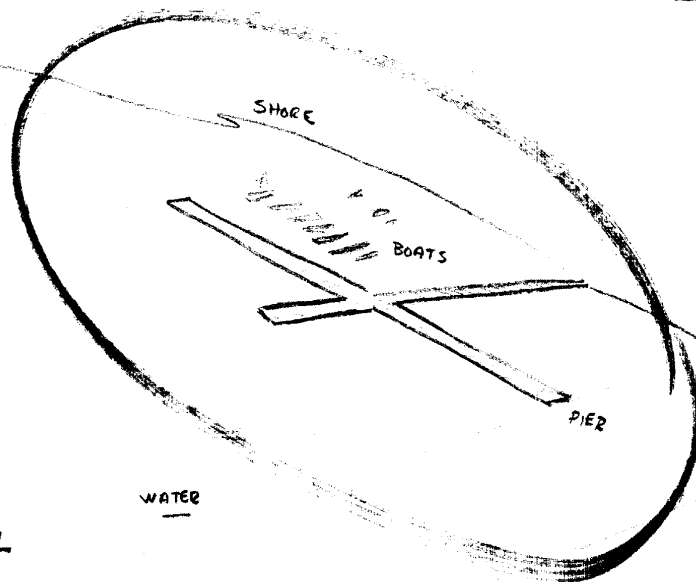
- #63: A bunch of square and rectangular objects which appear to be signs hanging on store fronts and dangling down from poles, jutting out from the fronts of stores. A lot of activity, congestion, noise and a sense of, a feeling of purchasing, like going around and buying things. Just like you would feel if you were in a Hong-Kong street, getting pushed around, bumped around by the people there and you're trying to buy little knick-knacks or stuff.
- #66: Okay.
- #63: And that was the feeling I got from it.
- #66: You said, you had seen something like this before in Mexico?
- #63: Yes.
- #66: Was that deep in Mexico or where would that be?
- #63: No. right in Nagales.
- #66: Nagales, a border town?
- #63: Yes, only more crowded than that.
- #66: Okay. So we have three kind of distinct images that are inter-related somehow. The target has an "X" shaped pattern, you feel there's a brightness there, that you labeled as water, you called this water, but there was a brightness to you. The "X" shaped pattern is somewhat off to the right of the target, associated with the "X" shaped pattern, is a what you call a lighthouse, a tower like structure, a vertical structure, man made, style type, that's associated with this "X". That's still off to right of what you call the target. Where the target "X" is on drawing #1, is some strange type of architecture?
- #63: No. Where the "X" is, I feel is in the middle of the water, I feel it's in the middle of a cove or a bay.
- #66: Okay.
- #63: In this island, as I wandered through the island looking for something that would indicate where I am, I started seeing this sort of architecture and stuff.
- #66: Oh, okay.
- #63: As I raised above and looked off at a distance at an oblique, to this island, I started seeing these objects.

SECRET

SECRET

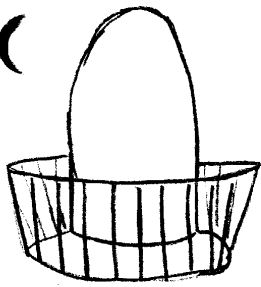
- #66: Okay. So these, this type of architecture in the city street thing ---
- #63: Is all in what I believed to be this island.
- #66: ---okay. okay. Anything else you want to add?
- #63: No. That's it.
- #66: Okay.

SECRET



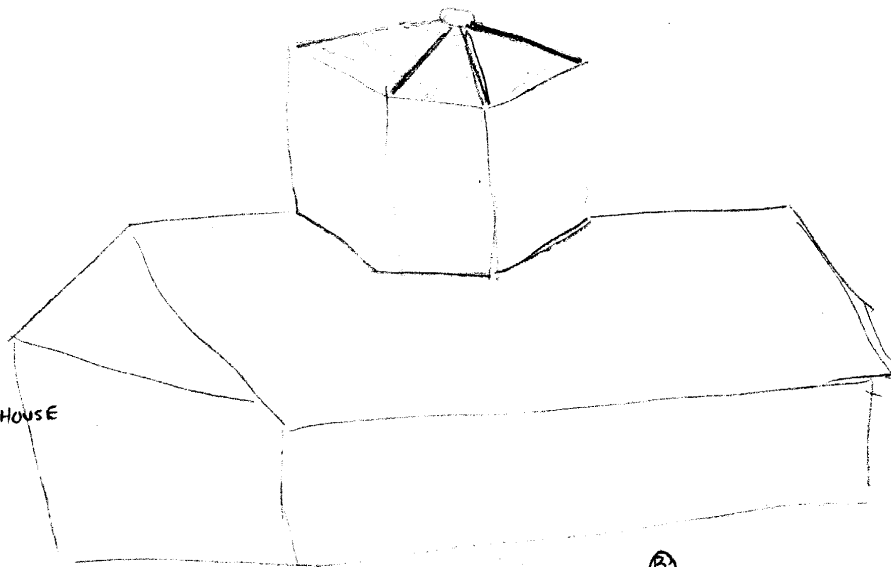
ISLAND FEEL

+
TGT



LIGHTHOUSE

(A)



COLONIAL / ORIENTAL

(B)
HOUSE

SECRET

TAB

STAT

Approved For Release 2003/09/09 : CIA-RDP96-00788R001400510001-1

Approved For Release 2003/09/09 : CIA-RDP96-00788R001400510001-1

17
