

COORDINATE REMOTE VIEWING TRAINING (CRVT)

CRVT Report: 977

DATE/TIME CONDUCTED: 131110 Dec 82

SOURCE #: 63

FILE #: 14

SITE: _____

EVALUATION: Zip - Unable to detect and/or decode site.

Tom
13 Dec 82
1110

38° N
78° 4' 10" W ——— m Break

38° N
78° 4' 10" W ——— m Break

38° N
78° 4' 10" N ———

m Break

38° N
78° 4' 10" W ———

A m Break

Aob Break

dark open
Water

38° N
78° 4' 10" W ———

A flat slab

B ———

38° N
78° 4' 10" W

A flat smooth
B land R

S-Z
bright C
beige CB
hill in distance

38° N
78° 4' 10" W

A flat
B land

S-Z
open C
nice temp CB
Wet R

38° N
78° 4' 10" W

A flat
B land
S-Z streaked CB
open C

38° N
78° 4' 10" W

A Hat
Bland

5-2
sandy CB
Flat
Break

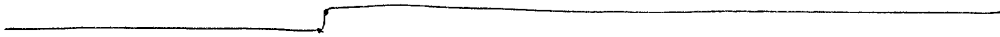
38° N
78° 4' 10" W

A M Break
~
~
~

38° N
78° 4' 10" W

A M Break
~
Hot Break
Water PC

38° N
78° 4' 10" W



A Angll

B -

S-2

sharp corners

square

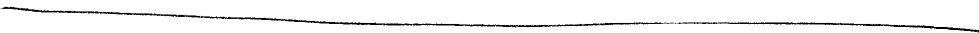
Con Break

38° N
78° 4' 10" W



M Beck

38° N
78° 4' 10" W



A flat
B - land

S-2
brown
square
blocks

manmade

38° N
78° 4' 10" W

A flat
Blind

S-2
chunky
block

Aol Break

Like a stone wall
a wall of stacked
blocks

38° N
78° 4' 10" W

A—
B—

S-2
strong C
depending on
stout Pt
Aol Break military fort.

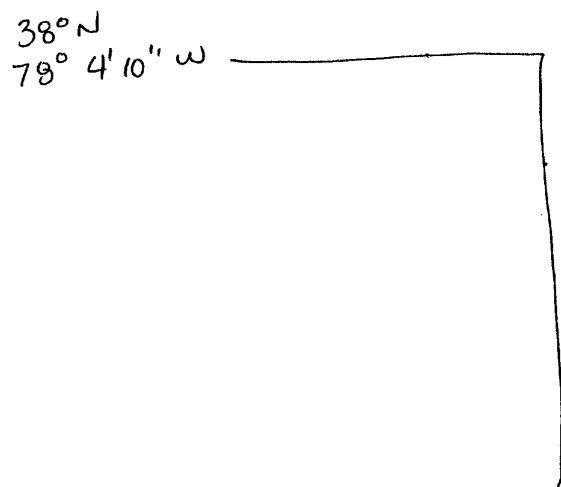
38° N
78° 4' 10" W
M Break

38° N
78° 4' 18" W
A Rising
B

38° N
78° 4' 10" W
A Rising
B manmade

- S-2
- Strong PC
- tail PC
- central PC
- alone c
- relative
- lite down PC
- Sand color PC

quiet c
dusty smells
grainy
warm
cold c



A flat/down
B structure

3-2
mand
tail
defending pc
ditching 11/12

Brech

Sum:

Flat wet land / open water

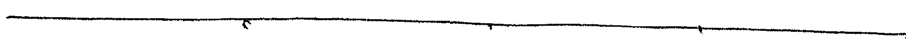
hills in distance

manmade structure stacked blocks, strong cold
alone, central quiet.

Aol Beck

fort sitting in
middle of nowhere

38°N
78°4'10"W



A flat
B land

scold

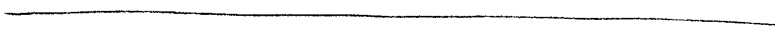
Site near hills

38°N
78°4'10"N



in Beck

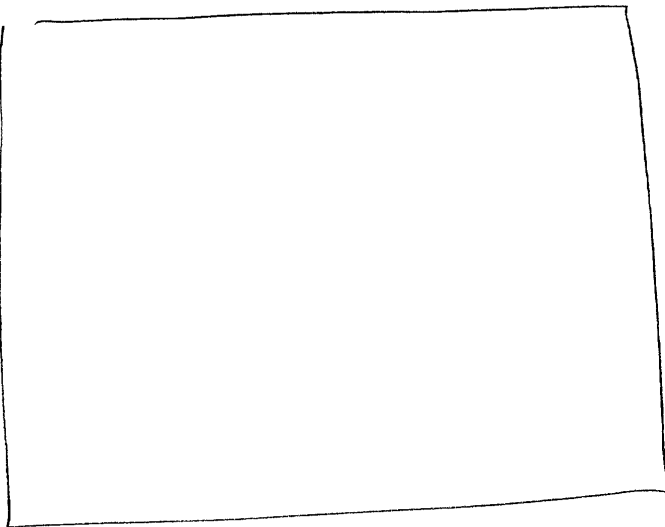
38°N
78° 4' 10" W



M Break

M.M. STRUCTURE

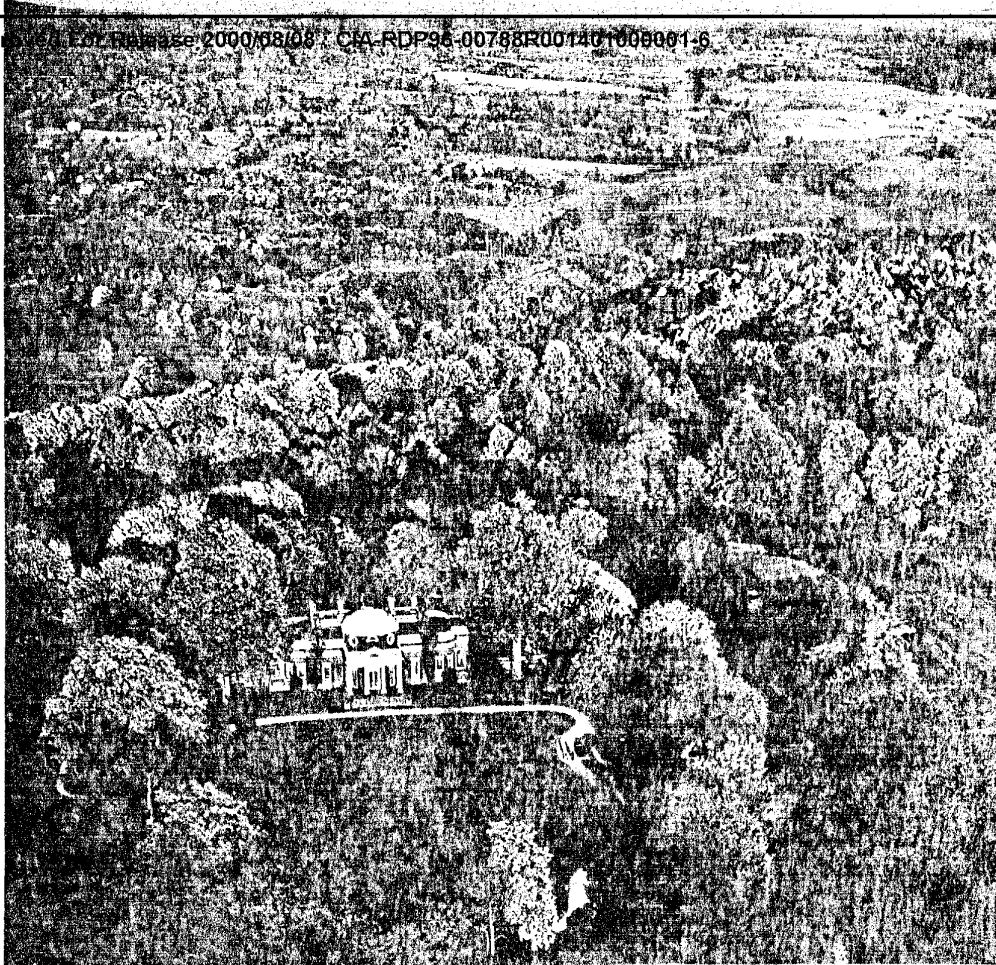
38°N
78° 4' 10" W



A enclosing
B structure of B

S-Z
manmade <
tall PC
Reinforced Edges PC
stone LFB

Ad Break
Fort
mud can
terrain open
no neg
like Alamo
- or something
End

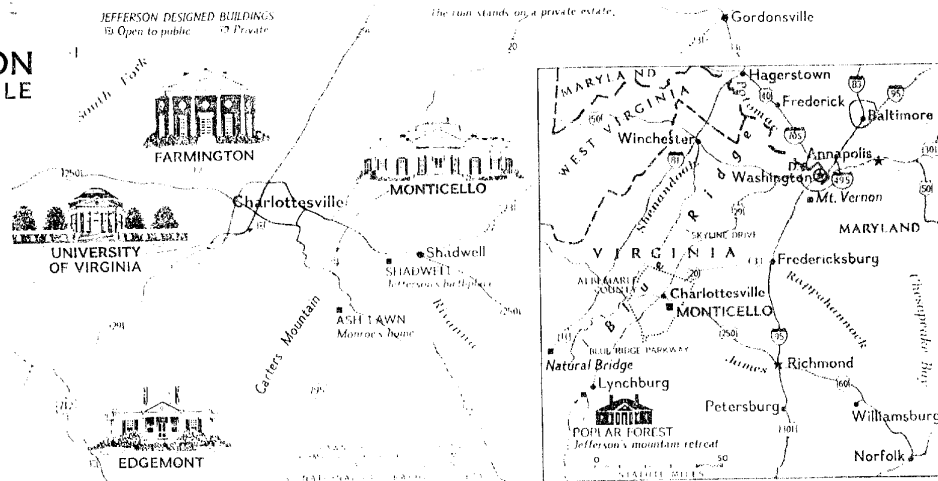


"Our own dear Monticello - where has Nature spread so rich a mantle under the eye? mountains, forests, rocks, rivers." Thus Jefferson described the surroundings of his beloved home. "He placed his mind, as he had done his house," wrote French traveler Chastellux, "on an elevated situation, from which he might contemplate the universe."

JEFFERSON SET THE STYLE



ing renovation
ing Jefferson's
dome's plinths.



CPYRGHT



Fair face of a dream realized reflects in the mirror of a fish pond. From the columned portico of the west front, the Sage of Monticello watched grandchildren at play, organizing their games and races. Monticello's stepped shoulders around the dome disappeared with extensive

decay in the mid- in 1954-5, archite original designs re