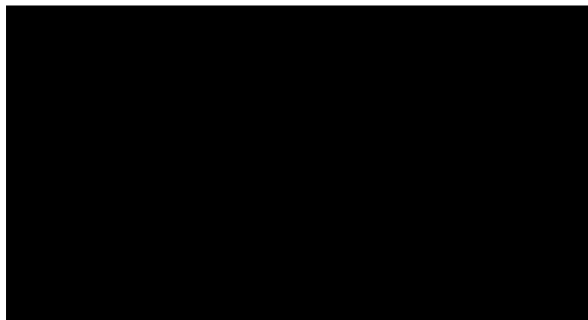


Approved For Release 2000/08/08 : CIA-RDP96-00788R001600280002-4

**SECRET**

PROJECT: 8303

SG1A      TARGET



**CENTER LANE** WARNING NOTICE!  
SPECIAL ACCESS PROCEDURE  
RESTRICT DISSEMINATION TO THOSE  
WITH VERIFIED ACCESS  
CATEGORY CL-3

**SECRET**

NOT RELEASABLE TO FOREIGN NATIONALS

Approved For Release 2000/08/08 : CIA-RDP96-00788R001600280002-4

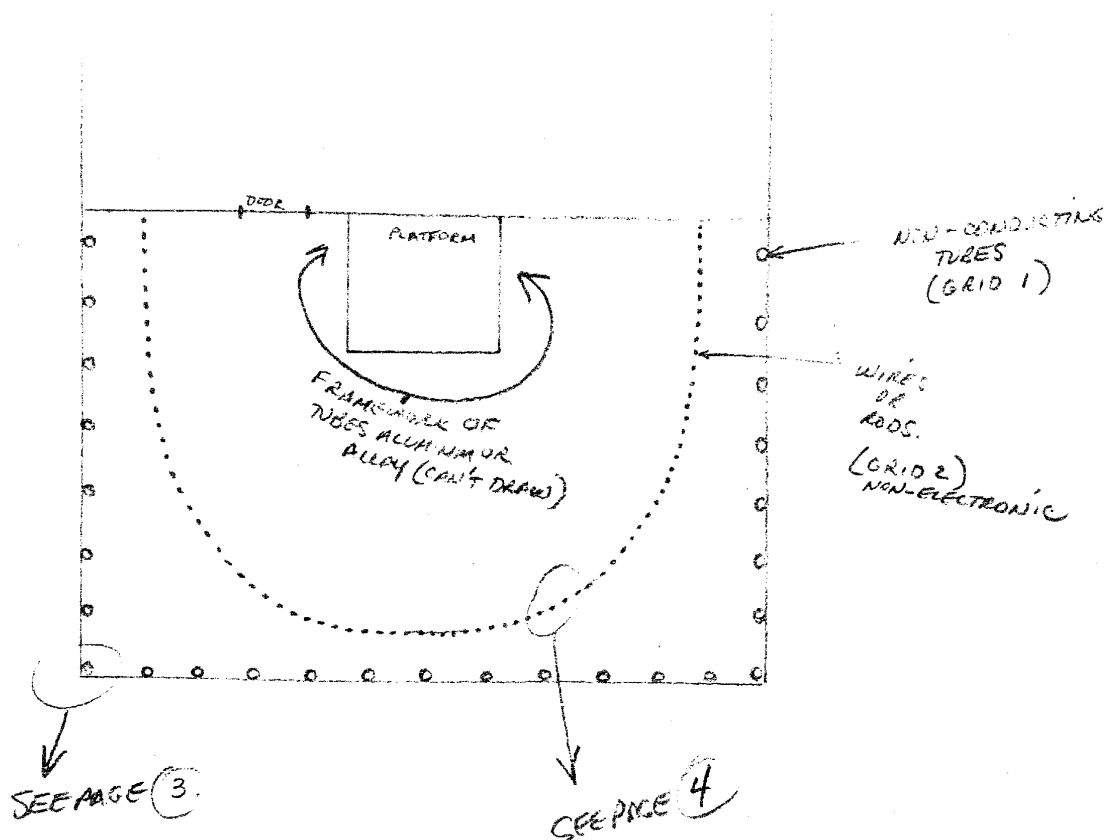
SG1A

Approved For Release 2000/08/08 : CIA-RDP96-00788R001600280002-4

Next 1 Page(s) In Document Exempt

Approved For Release 2000/08/08 : CIA-RDP96-00788R001600280002-4

**SECRET**



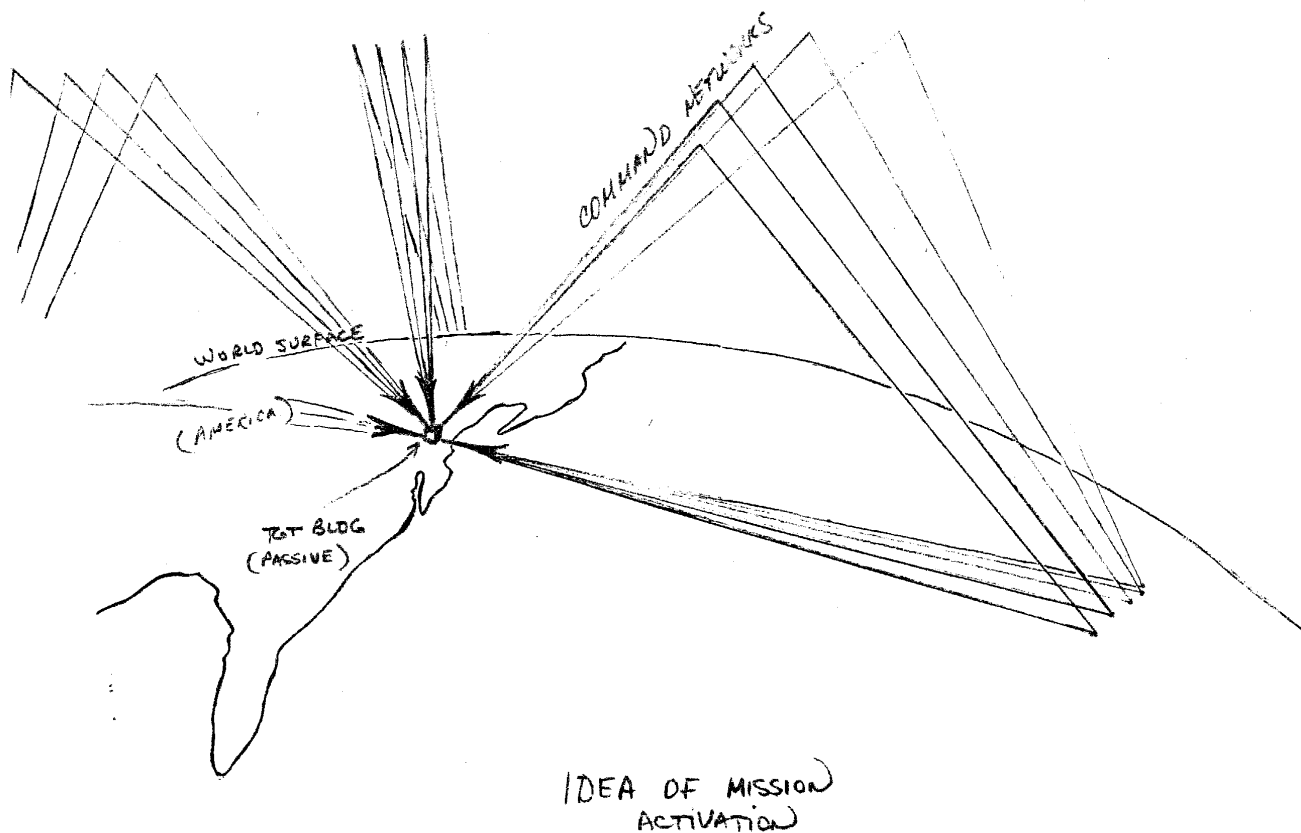
"(THIS IS) THE OUTSIDE EDGE OF THE FLOORING SUPPORTING THE NON-CONDUCTING TUBES, WHAT I CALL GRID 1 AND GRID 2, WHICH ARE FINE WIRES."

**CENTER LANE**

**SECRET**

Approved For Release 2000/08/08 : CIA-RDP96-00788R001600280002-4

**SECRET**



"(THIS) IS WHAT I CALL . . . AN IDEA OF MISSION ACTIVATION, BUT I DON'T KNOW IF . . . IT'S A COMMAND NETWORK . . . I KEEP GETTING THIS IMAGINARY DISPLAY OF TRIANGULAR COMMAND THAT WORKS SKY TO GROUND TO GROUND, AND THEY ARE ALL GOING INTO THE BUILDING . . . I DON'T KNOW IF THAT'S COLLECTION OR IF IT'S COMMAND TO COLLECT. . . . THEY'RE FROM ALL OVER, ALL DIFFERENT DIRECTIONS."

**CENTER LANE**

Approved For Release 2000/08/08 : CIA-RDP96-00788R001600280002-4

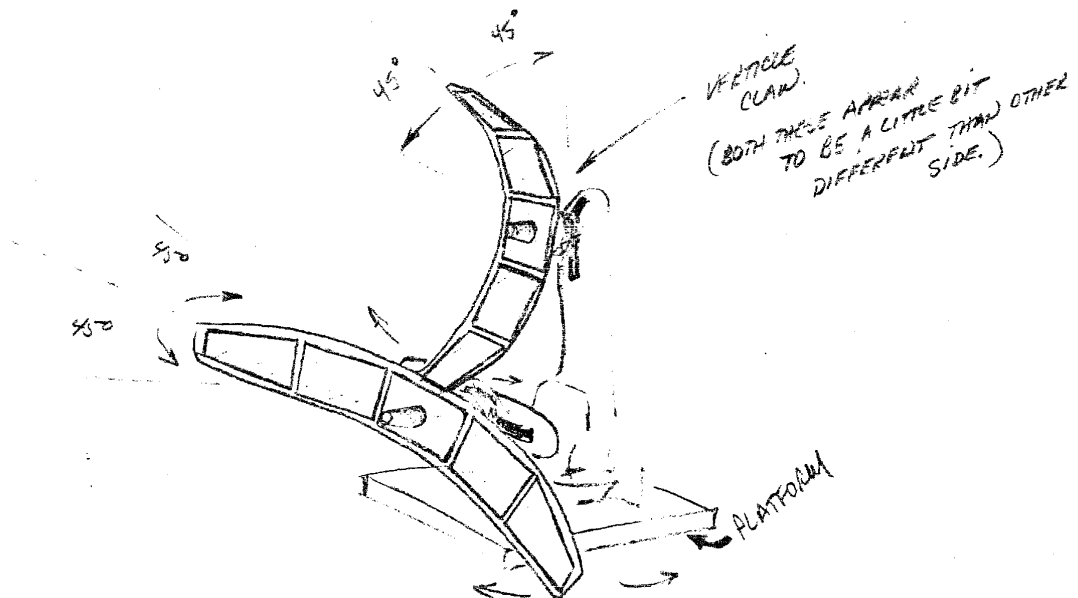
**SECRET**

NOT RELEASABLE TO FOREIGN NATIONALS

Approved For Release 2000/08/08 : CIA-RDP96-00788R001600280002-4

**SECRET**

"EVERYTHING ON THIS END OF THE BUILDING IS A MIRROR IMAGE OF THE OTHER END OF THE BUILDING, EXCEPT FOR WHAT I'VE DRAWN. THE THINGS THAT I PERCEIVE AS BEING DIFFERENT OR VARIANCES."



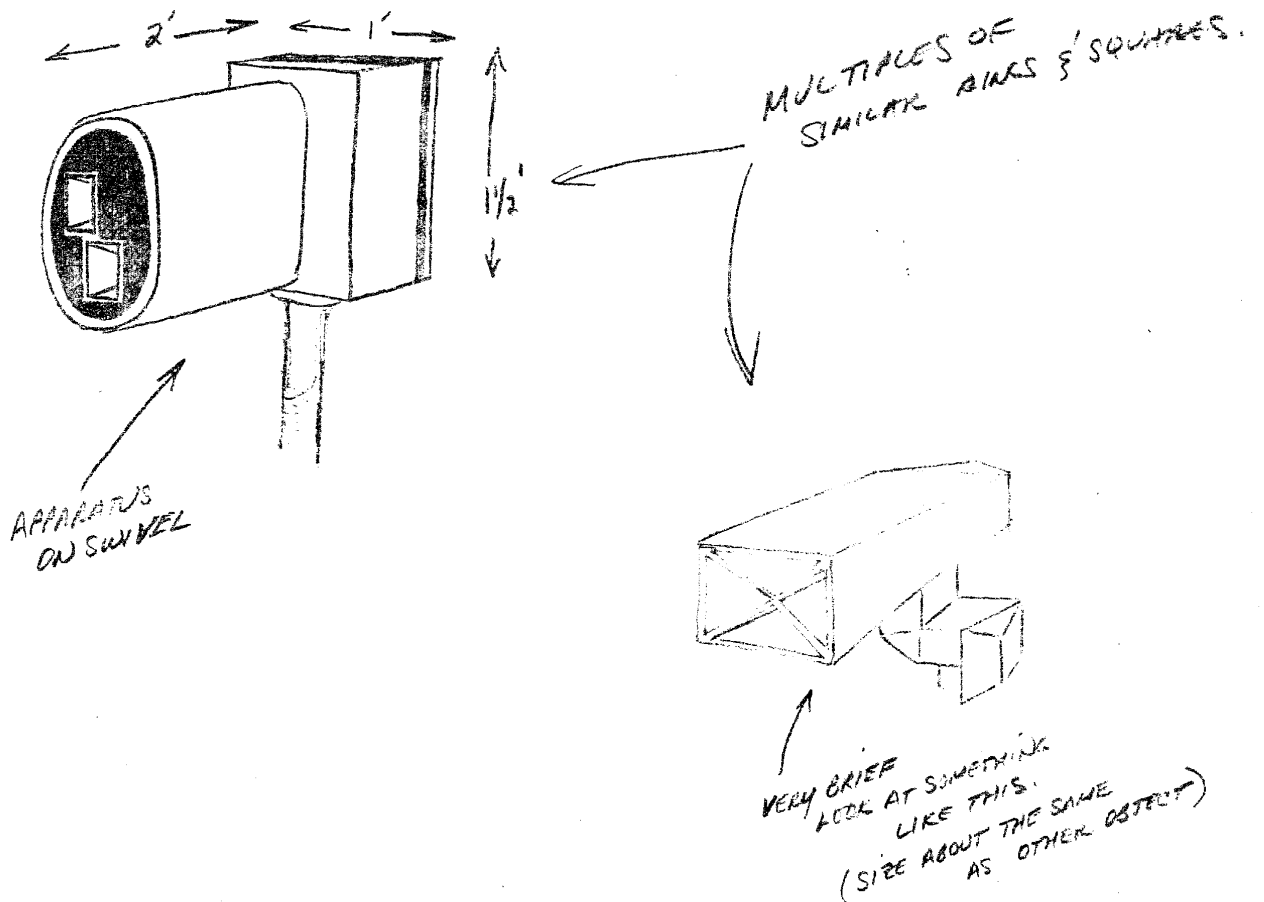
"(THIS) SHOWS A VERTICAL CLAW IN ADDITION TO A HORIZONTAL AND THEY ARE OF A DIFFERENT DESIGN . . . THEY ARE MADE OF METAL PLATES AND SOME KIND OF FRAMEWORK. . . . THEY MOVE AS INDICATED."

**CENTER LANE**

**SECRET**

Approved For Release 2000/08/08 : CIA-RDP96-00788R001600280002-4

SECRET

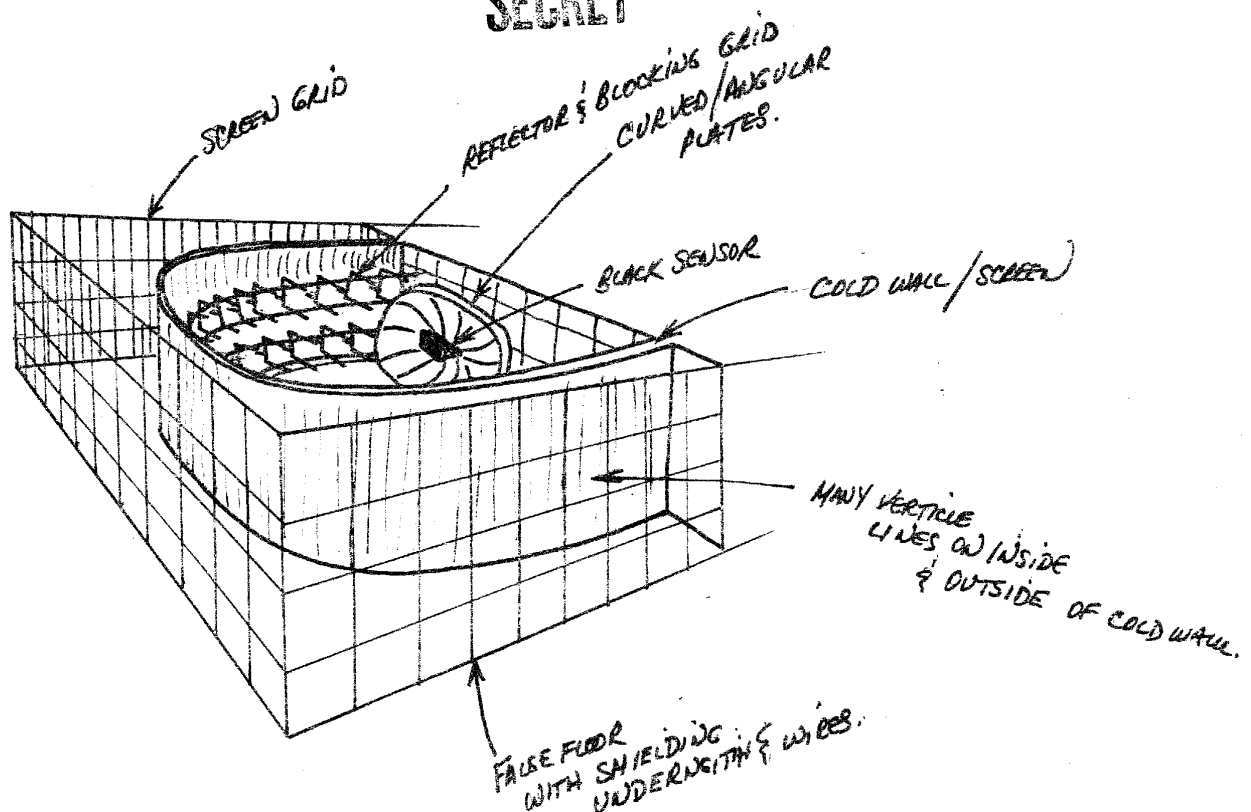


CENTER LANE

"(THESE ARE) TWO DEVICES. THEY ARE KIND OF SMALL AND THERE IS MORE THAN ONE OF EACH."

SECRET

**SECRET**

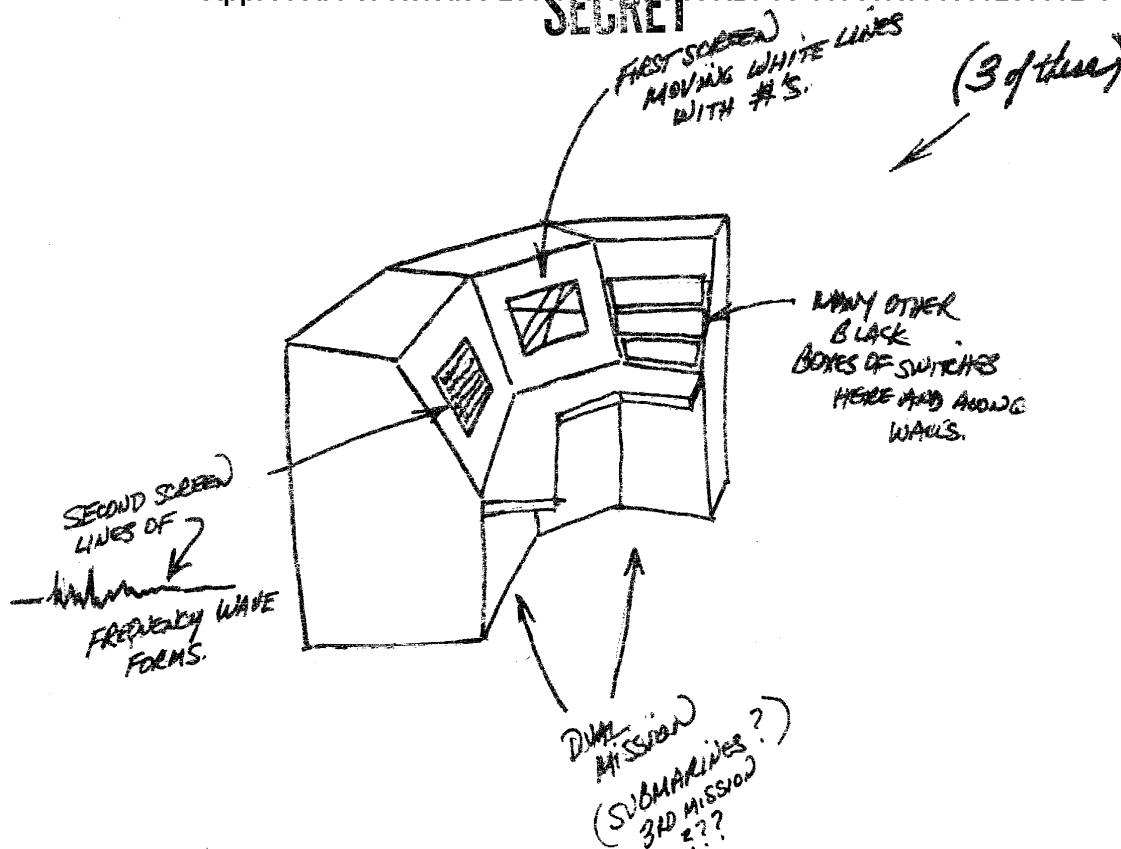


"(THIS IS) A CUTAWAY OF THE TOP OF THE . . . NEWLY CONSTRUCTED AREA. WORKING FROM THE CENTER OUT, THERE IS A CURVED, ANGULAR, PLATE-TYPE REFLECTOR DEVICE THAT MOVES UP AND DOWN AND SIDWAYS . . . IT'LL MOVE ALL DIRECTIONS. THERE'S A BLACK SENSOR TYPE BOX IN THE CENTER. OUTSIDE THAT IS (A) COLD . . . SCREEN-TYPE WALL (WITH) A LOT OF VERTICAL LINES INSIDE AND OUTSIDE. . . . INSIDE, THERE'S . . . TWO ROWS OF SOME KIND OF REFLECTOR OR BLOCKING GRID . . . THEN OUTSIDE OF ALL OF THAT, THE EXTERIOR WALL IS A SCREEN GRID . . . UNDERNEATH THERE'S A FALSE FLOOR . . . COMPLETELY SHIELDED. AND UNDERNEATH THAT IS ALL KINDS OF WIRES, JUST A SPAGHETTI FULL OF WIRES."

**CENTER LANE**

**SECRET**

**SECRET**



"THERE (ARE) . . . THREE CABINETS TOGETHER, . . . THREE SETS OF THESE ALL IN THE SAME ROOM. I GET AN IMPRESSION OF . . . TWO VIDEO SCREENS, ONE IN EACH CABINET AND THE . . . RIGHT HAND CABINET IS ALL LIGHTS AND SWITCHES (AND) BLACK BOXES. THE SCREEN TO THE LEFT IS . . . DIVIDED UP INTO FIFTEEN HORIZONTAL SECTIONS. IT'S A LIGHT GRAY AND . . . HAS A DARK LINE THAT REPRESENTS WHAT LOOKS LIKE SOME FORM OF FREQUENCY SPIKING.

**CENTER LANE**

**SECRET**

NOT RELEASABLE TO FOREIGN NATIONALS