

2

~~SECRET~~/NOFORN-SKEET CHANNELS ONLY

PROJECT SUN STREAK (U)

WARNING NOTICE: INTELLIGENCE SOURCES AND METHODS INVOLVED

CRV Session Procedures Report (S/NF/SK)

Control Number	: 8702
Date of Session	: 22Jan87
Date of Report	: 29Jan87
Source Identifier	: 003



1. (S/NF/SK) Tasking: See original tasking data sheet (attached). Per ops officer, source had probably acquired the site during his last session, but not necessarily the correct target building; more data needed.
2. (S/NF/SK) Session: Session result should be discounted; monitor, while waiting for source to arrive, attempted to remote view the site, thereby overlaying the session (at least subconsciously) with signal line noise. Also, monitor interrogated source during this session, disturbing structure.
3. (S/NF/SK) Summary: ADL Drive (probably monitor-induced) of "high tech composite aircraft/secret project".
4. (S/NF/SK) Feedback: None provided source.

SG1J



CPT, USA

~~SECRET~~/NOFORN-SKEET CHANNELS ONLY

CLASSIFIED BY: DIA-DT
DECLASSIFY : OADR

Project FY 8702

Interviewer/Monitor Tasking

1. Describe the structure known as "Building C",
SG1A



Note: "Building C" is in a complex of other lettered (A, B, etc.) buildings. "Building C" is "the most unusual at the complex."

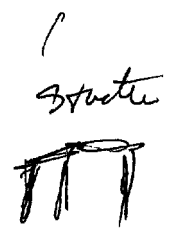
2. To be announced

Paul
22 Jan 8
F. M. ...
Ed
0908

451 200
633160

S2 D A2 E1 T I AL A15

also
chills



dy
obed

bumpy
man

brown
vast
red

tall
wide

large
head

green

flat
wa
open

brazy

A I Be
slight feeling
of exhilaration
by being in open

structure

sloping



Space
inside

like
airplane
hangar

white
shiny
smooth
rounded

color
white
long
thin
round



Boeing
aircraft

people
working

underway

underway

5 4 1/2 Underware - not exactly in "spy" sense - like plus & their work
are to be pass-protected from outside observation.

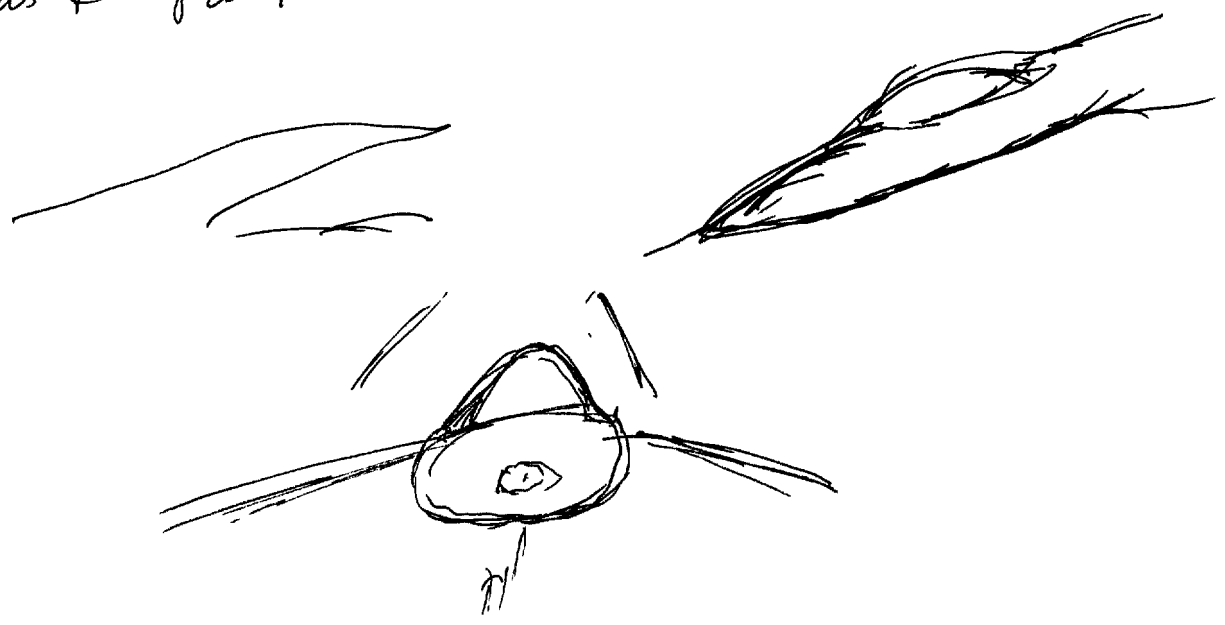
5 4 1/2 has to do with an apparatus or machine of some sort.

Steele
high tech

not
metal

Composite

5 4 1/2 when you know it, it's hard, strong, light; slightly
flexible, but doesn't sound like or feel like any sort
of structural metal. Has the feeling of craftsmanship
& high quality & quality design. Pleasing in its
contours & feel.



Squatty
with section

- experimental
semi-operational

52

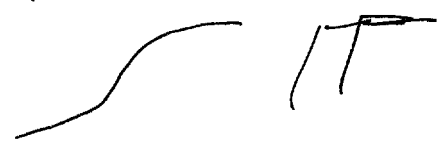
B A1 #1 T I AAL AS

5

AS

I think
it flies
hasly yet
but is
interest
to.

S 4 1/2 Unusual slope or direction or orientation to
bearing + control surface. There are some
unexpected non-curved angles.



lowes

suapt

alloy
tungsten

spacing

luntds



S 4 1/2 relatively small in proportion to others of its
class or category

S 2:

frank
on top

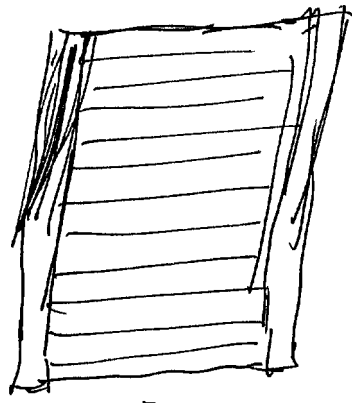
support

electronics

high
up

rails
platform
corrugated
steel

hinge
mechanism
door



wie ein
Schubladen
Rollladen

door
open
ingress

See 1/2 not for identification components - they go through

Other than this is for
finished object.

52

D

A2

F2

T

I

ADL

#6

several
structures
bliss

large open
areas

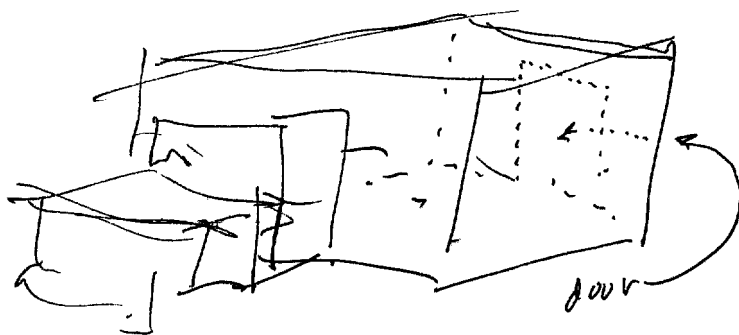
flat
spread
out

rounds
squares
lands

large
complex

windows

S4 1/2 part has lots of windows. Part doesn't
have any.



like a couple structures combined in one. smaller

"dense" structure w/ smaller rooms attached internally to larger
"spacier" structure w/ a few a one large room.

function

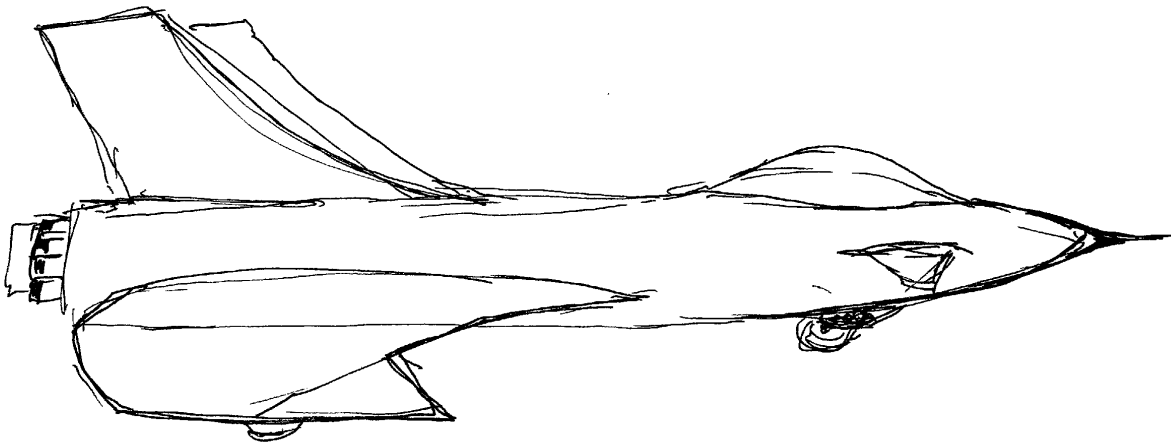
S4/2 function seems to be integrated effort (the engineering, design, prototyping, production) to go from concept to final product; not volume production but try-out prototype production.

Summary

Site involves large flat open areas reminiscent of
 a field, w/ large + small structures associated. Site occupies
 extensive territory. One structure is notably large,
 but seems an ~~an~~ amalgamation of a couple of
 structures into one for one overall purpose. ~~One~~ portion
 of structure is smaller "dense" - various small rooms with
 closer association of people. Other part is large +
 "Spacious" - consists of a few, or perhaps only one
 large "room" a way. A ^{way} door that "rolls up" - like a
 German "Rolladen". This door is not used to admit
 constituent parts - They come through other access.
 This door allows ingress + egress of finished
 product, which is light-grey or white, smooth,
 tapered, curved, shiny painted part transparent
 with planes + surfaces that are curved, slopes
 slanted, ~~smooth~~ swept + angled. It moves
 smoothly along ground, but suggests strong AC
 + Aircraft.

Experiments + semi-operations are element
 involves. Materials of object are hard, strong
 smooth, but don't sound metallic when struck.

0745



AOL-like land on
seen

low slung to ground

AOL/s Ducting has to do with
engines

AOL/s something more nose rounded and
whisker on cat but wider + thicker.

but no more - to Ex effort

Sufficiently