

~~SECRET~~/NOFORN

PROJECT SUN STREAK

WARNING NOTICE: INTELLIGENCE SOURCES AND METHODS INVOLVED

PROJECT NUMBER: 8826 SESSION NUMBER: 3
DATE OF SESSION: 881007 DATE OF REPORT: 881012
START: 1419 END: 1529
METHODOLOGY: CRV VIEWER IDENTIFIER: 18

1. (S/NF/SK) MISSION: Determine if the vessel known as ~~██████████~~ SG1A
or ~~██████████~~ which left Honduras on 21 September 1988, was carrying
drugs as suspected. If so, determine where on board the illegal
drugs were stored. Determine how they were packaged and stored.
Determine where they were unloaded and determine the final
destination for the drugs.

2. (S/NF/SK) VIEWER TASKING: Encrypted coordinates
127880/79629. The cue "item of interest" refers to any drugs
on board the vessel (if any). To determine the location of the
"item of interest" in the "structure" (location of the drugs on
board ship), viewer was given a paper with three rectangles on it
symbolizing a side, front and top view of the "structure". To
determine where the "item of interest" was unloaded and its final
destination, the viewer was given a map of the entire United
States to dowse.

3. (S/NF/SK) COMMENTS: O18 reported that the drugs are in a
squarish, round-edged, flat object that is approximately 1x3x3
feet in size. It is of a dark, matte color, but there are shiny
parts on it that reflect the light. This object is located in a
dark, metallic room that has an opening near the top where
someone can climb down a metal-runged ladder into the room.
There is also a door in the wall opposite the position of the
object. This room is in the forward, port side of the ship, just

HANDLE VIA SKEET CHANNELS ONLY
SPECIAL ACCESS REQUIRED

~~SECRET~~/NOFORN

CLASSIFIED BY: DIA (DT)
DECLASSIFY ON: OADR

memorandum

DATE: 7 October, 1988

REPLY TO
ATTN OF: DT-S

SUBJECT: SESSION SUMMARY (C/SS)

TO: DT-S (ATTN: 095)

1. (S-SS) STATISTICS:

Viewer:	018
Session date:	07 OCT 88
Start time:	1419
End time:	1529
Mode of operation:	CRV
PI:	None
AV:	None

2. (S-SS) CUING: "Continue to describe the item of interest discovered in the last session."

3. (S-SS) RESULTS:

a. The "item of interest" is a squarish, round edged, flat object, approximately 1x3x3 feet in size (see sketches, page 5). It is of a dark, matte color, but there are shiny parts on it which reflect the light.

b. The structure surrounding the item is large, fairly empty, and dark. The structure is long and thin (given by monitor), and has the "item of interest" located in it at a point in its upper, front end (see 3D location, page 7A).

c. The room in which the item is located is dark, metallic, and appears to have an opening at the top where someone can climb down a metal-runged ladder into the room. There is also a door in the wall opposite the position of the item (see sketches, page 8 for room locations).

d. Dowsing a map of the U.S. with three different taskings produced the following results:

- 1) UNLOADING OF ITEM:
 - Newport News/Norfolk: weak feeling of location
 - Charleston/Savannah : strong feeling
 - *Santa Anna, CA : sharp, painful feel
- 2) DESTINATION OF STRUCTURE:
 - Sault St. Marie : weak feeling
 - *Los Angeles, CA : weak feeling

OPTIONAL FORM NO. 10
(REV. 1-80)
GSA FPMR (41 CFR) 101-11.6
5010-114

☆ GPO : 1985 O - 461-275 (364)

~~SECRET~~/NOFORN

PROJECT SUN STREAK

WARNING NOTICE: INTELLIGENCE SOURCES AND METHODS INVOLVED

below deck. The drugs were unloaded in either Newport News/Norfolk, VA (weak); between Charleston and Savannah (strong feeling), or in Santa Anna, CA (very strong feeling). Of these O18 reported that Newport News had the weakest feeling of being the location and that Santa Anna, CA had the strongest feeling of being the location. O18 identified 6 final destinations for the drugs: St. Louis (weak feeling), Cincinnati (weak feeling), Washington, DC (weak feeling), Las Vegas (strong feeling), Boulder, CO (strong feeling), San Francisco (very strong feeling). During the each portion of the dowsing O18 commented that he felt like he was sensing two different "items," one with a weak feeling, the other with strong, painful feeling. This may be due to the same problem that caused his difficulty in the first session, especially if the customer had more than the one written requirement in mind.

4. (S/NF/SK) EVALUATION:

~~SECRET~~/NOFORN

3) DESTINATION OF ITEM:
St. Louis : weak feeling
Cincinnati : weak feeling
Washington, D.C. : weak feeling
*Las Vegas/Boulder Co: strong, sharp pain
*San Francisco : very strong pain.

* During the dowsing, there was a very strong feeling that I was sensing two different "items". One (those perceptions in the eastern half of the U.S.) was more like a "presence". The other (the perceptions in the western U.S.) entailed definite sharp, sick pain.

7 OCT 88
1419 WWP
FT M...
DSS

PI news
TV news

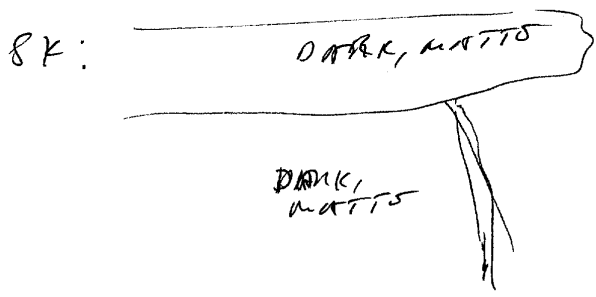
SZ D M O T I AN a/s.
(ITEM OF INTEREST) COMPACT

DARK
MATTE
Brown
SHORT
~~SHORT~~
WIDE
SQUARISH
ROUNDED

CONTINUED

(ITEM)

WIDE
JUTTING OUT

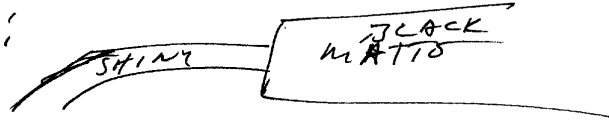


(2)

S2 P M O (ITEM) I AN NLS,

SHINY MATTS

SK:



AOL TRUK MACHINE

(ITEM)

DARK IN THE DARK

MOVES TO TIME WHEN IT'S LIGHT

S2 D M ET T I AN NLS,

RUMBLING SOUND

MOTION

SIDE TO - SIDE

SWAYING

"THUNK-THUNK" SOUND

LIKE ~~THE~~ TOWNS SHOOT IN OXYON

3

52 D A O T I AOL A/S.
(ITEM)
OF INTEREST.

MUST KNOW
BLACK
SILVER
SHINY
MATE
ROUGH FEEL
ROUNDED CORNERS
LOW
SHORT
WIDE
SQUAMISH

MOTION

REGULAR
LARGE
SWAYING
BACK & FORTH

ALL BUNK
THIS THING SHOULDN'T
BE MOVING LIKE THAT!

ALL BUNK
LIKE A
CUSHION

(4)

SZ D M OT T R

ALS

ALS
VIBES AT CUSHION

HAND
PLASTIC FOOT

FOR BNC
TURINE MOTOR

ALS
EXHAUST PIPES

~~SP~~

PIECE

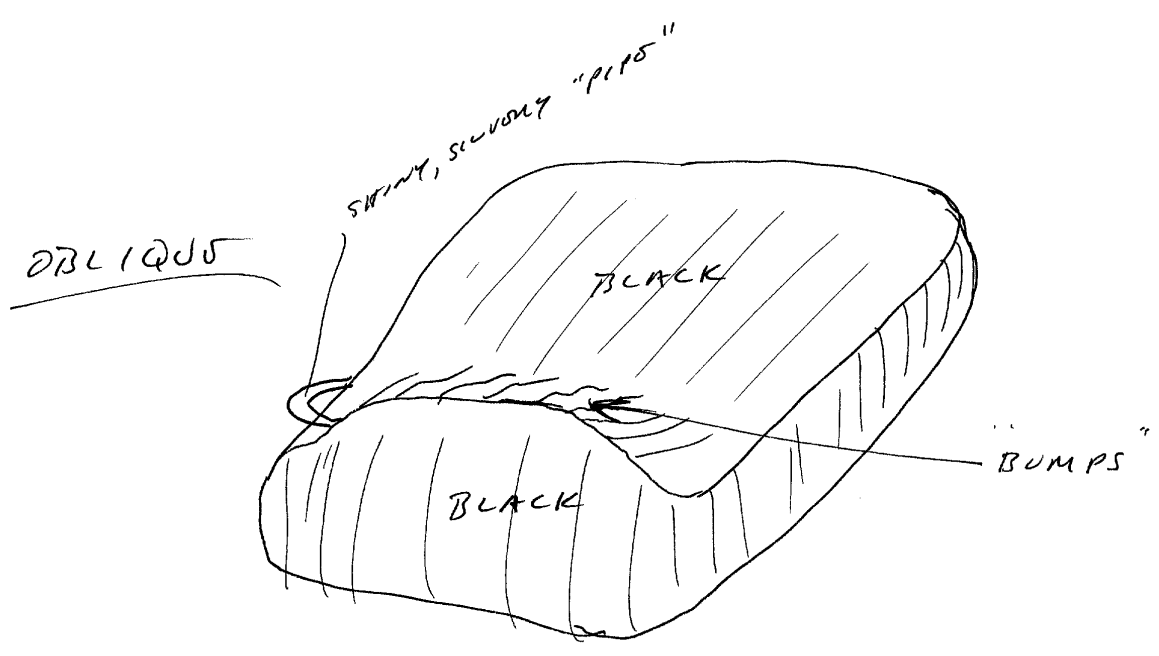
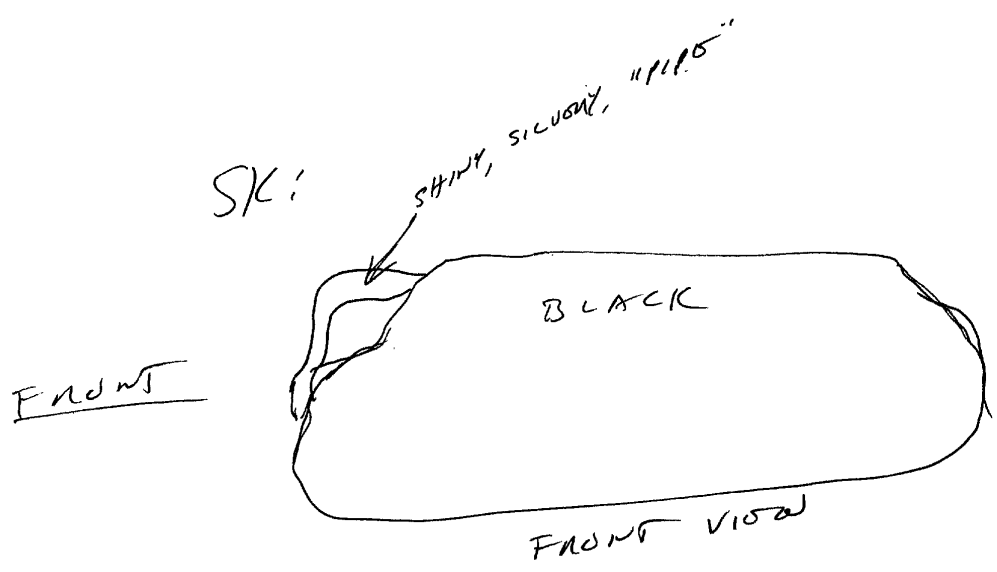
ON LEFT

SKIN?

ROUND
BENT
CUNYD

UNACCPUL

BUMPS



6

S2 D M O T I FOR ALS.

AD BK ~~AD BK~~
"PHASOM"

CONFUSION BK.

FOOL THAT THIS IS
EITHER SMALL
(1' X 3' X 3'), SITTING ON
FLOOR NOWBY, OR

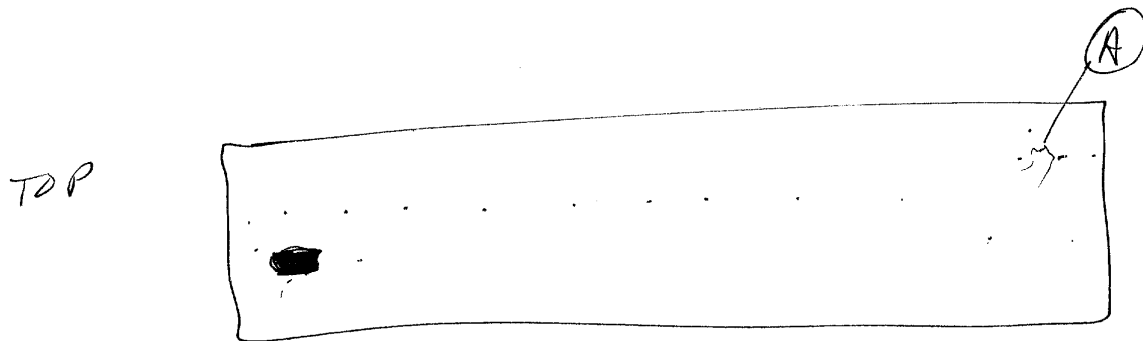
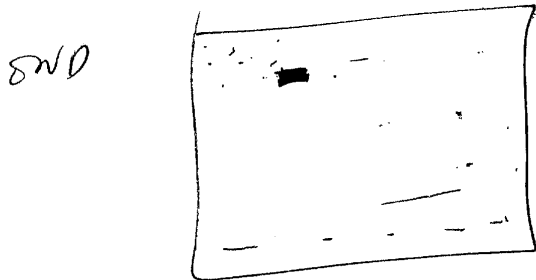
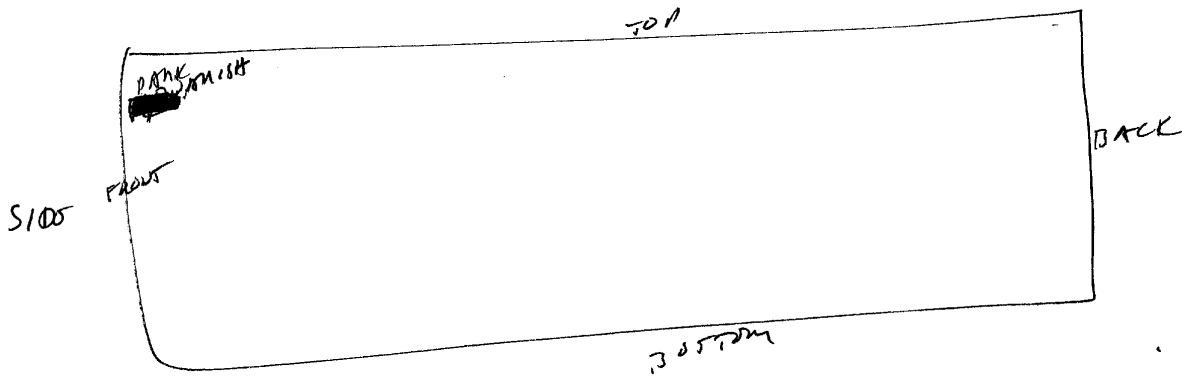
VERY LARGE (2 X 6 X 6 YARDS)
SITTING FURTHER AWAY,
ON A MUCH LOWER
LEVEL.

S6 1/2 PERCEPTION OF BOTTOM STAGE.
IT'S SMALL SIZED.

AD BK
WHAT IF THERE IS
A MOOSE + A HORSE
ONE, AND I'M NOT
SEPARATING THE TWO?

(2)

STRUCTURE :



8#

LOCATE THE ITEM (505 P 7A)

SZ D M N T, RZ NLS,
(ITEM)

DMK

SEARCH

(A)

SMTK HOW VERY IMPORTANT.

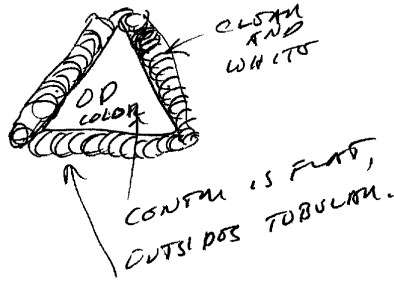
SZ D M N T, RZ NLS
(A)

DD COLOR

TRIANGULAR
FLAT

WHITE
CORNER

SK.



LIQUID

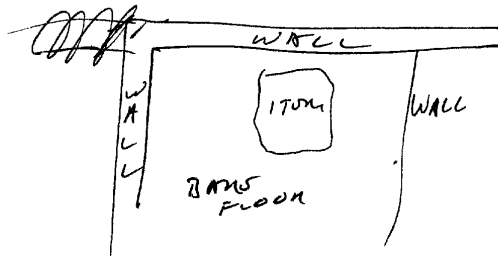
S6 1/2 LIQUID INSIDE TUBES DOESN'T EVEN BOIL
TO FILL THEM. JUST ENOUGH TO NOT CLIMB
TO SIDES IN DROPS. TUBES GLASS ON TOP +
RADIATED, MILK WHITE ON BOTTOM.

8

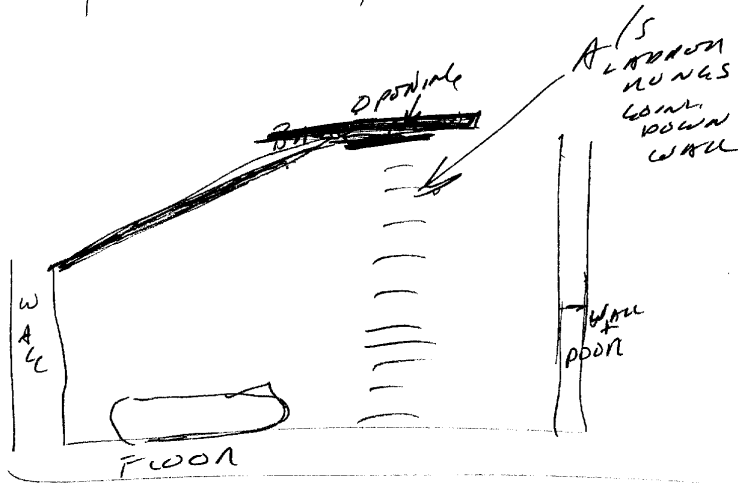
SE 0 M 07 T 1 NW NLS.
(SURROUNDING AREA)

WALL

SK!



SIDE VIEW



UNLOADING

(7)

① NEWPORT NEWS
TUNSFOLK

WEAK
FOOLING

② ~~CHARLOTTE~~
SAVONNA

STRONG
FOOLING

③ SANTA ANNA, CALIF. (STRONG
PATN)

FINAL DESTINATION (OF SHIP)

SAULT ST MARIE - WEAK FOOLING
LOS ANGELES - " "

FINAL DESTINATION (OF ITEM)

ST LOUIS (WEAK FOOL)
CINCINNATI (")
DC (")
LAS VEGAS/DOULOSA CITY (STRONG PATN)
SAN FRANCISCO (STRONG ")

6 1/2 TOTALLY DIFFERENT FOOLINGS FOR EACH HALF
OF COUNTRY - WEST HUNT SESSION END: 1529