

~~SECRET~~/STD

UNITED STATES GOVERNMENT

memorandum

DATE: 22 FEB 90

REPLY TO
ATTN OF: DT-S

SUBJECT: SUN STREAK Project 9002-C (U)

TO: HQDA, ATTN: DAMI-PO

1. (S/STD) During the period of 6 February 1990 to 21 February 1990, five sessions were to describe the residence of a target personality identified as [redacted] at geographical coordinates [redacted]

SG1A

2. (S/STD) The target area is comprised mainly of a group of structures located on a hillside in a sunny surrounding of lush vegetation. Similar rolling hills are in the immediate area. Viewer 003's perception of the principal structure along with what appeared to be a water tower are outlined in an overhead sketch (TAB A). Viewer 018 perceived the principal structure represented in a sketch at TAB B. Viewer 025 perceived an isolated shed where drugs were stored (TAB C). There was a feeling of isolation and abandonment surrounding the target area. Cocaine as well as other drugs were stored at the shed. Viewer 025 also stated, "Initially, the drugs are transported by land, and then by air." Three viewers perceived the presence of water at the foot of the hill where the principal structures are located.

3. (S/STD) (OPS COMMENT) The contents of paragraph 2, represents a composite of information reported substantially by four sources.

ENCL
TAB A & TAB B
SKETCHES

[redacted]

Branch Chief

SG1J

HANDLE VIA STIPPLE CHANNELS ONLY

CLASSIFIED BY: HQDA (DAMI-PO)
DECLASSIFY BY: OADR

~~SECRET~~/STD

OPTIONAL FORM NO. 10
(REV. 1-80)
GSA FPMR (41 CFR) 101-11.6
5010-114

☆ GPO : 1984 O - 461-275 (272)

~~SECRET~~ / STD

Draft

WORKING PAPER

22 FEB 90

DT-S

SUBJECT: SUN STREAK Project 9002-C (U)

HQDA, ATTN: DAMI-IO

1. (S/STD) During the period of 6 February 1990 to 21 February 1990, five sessions were to describe the residence of a target personality identified as [redacted] at geographical coordinates [redacted]

SG1A

SG1A

2. (S/STD) The target area is comprised mainly of a group of structures located on a hillside in a sunny surrounding of lush vegetation. Similar rolling hills are in the immediate area. Viewer 003's perception of the principal structure along with what appeared to be a water tower are outlined in an overhead sketch (TAB A). Viewer 018 perceived the principal structure represented in a sketch at TAB B. Viewer 025 perceived an isolated shed where drugs were stored (TAB C). There was a feeling of isolation and abandonment surrounding the target area. Cocaine as well as other drugs were stored at the shed. Viewer 025 also stated, "Initially, the drugs are transported by land, and then by air." Three viewers perceived the presence of water at the foot of the hill where the principal structures are located.

3. (S/STD) (OPS COMMENT) The contents of paragraph 2, represents a composite of information reported substantially by four sources.

SG1J

ENCL
TAB A & TAB B

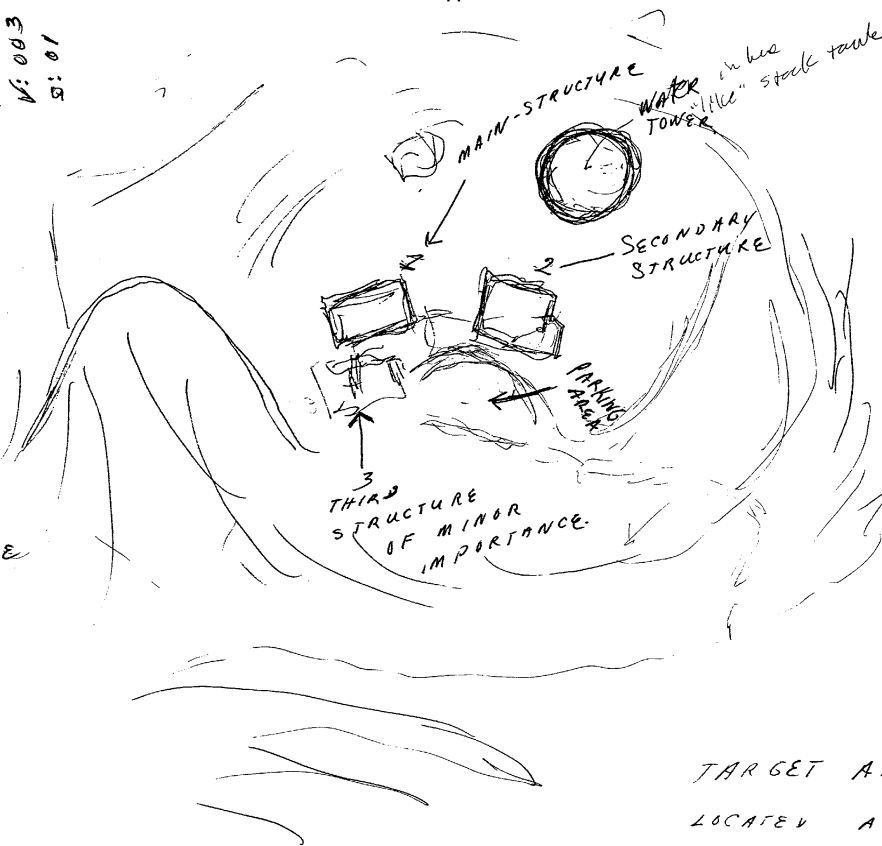
[redacted]

~~SECRET~~ / STD

P: 90022
D: 900224
V: 003
S: 01

702

NEW METAL STRUCTURE



open wild lot
 few in
 scattered
 trees
 bushes
 vegetation
 enclose

TAB A

8/5
 "it" from a
 vantage

TARGET AREA
 LOCATED ATOP

P: 9002-C
V: 018
S: 01

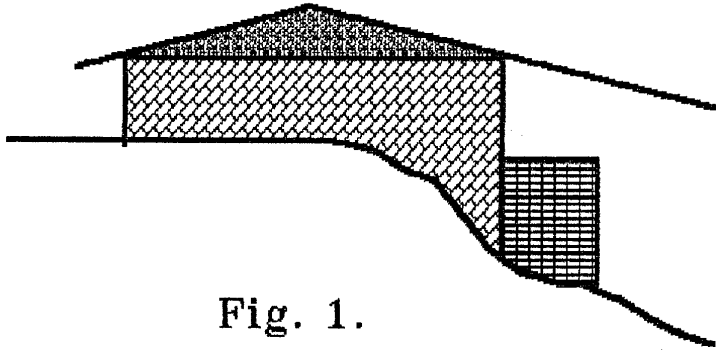


Fig. 1.

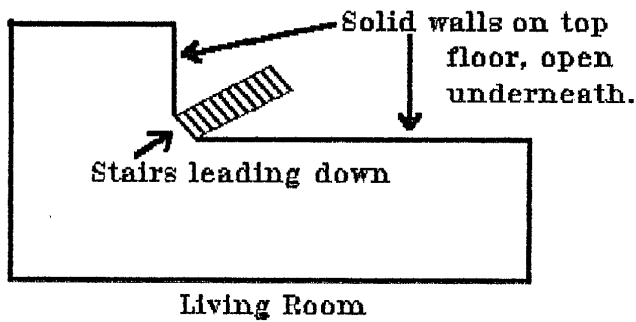


Fig. 2.

TABB