

~~SECRET~~/NOFORN

PROJECT SUN STREAK

WARNING NOTICE: INTELLIGENCE SOURCES AND METHODS INVOLVED

PROJECT NUMBER: 9006 SESSION NUMBER: 02
DATE OF SESSION: 1 MAR 90 DATE OF REPORT: 1 MAR 90
START: 0715 END: 0800
METHODOLOGY: SOLO VIEWER IDENTIFIER: 095

SG1A

1. (S/STD) MISSIONS: Determine the current location of a vessel identified as the suspected of transporting illegal drugs. Determine where the drugs will be unloaded. Describe how the drugs are packed and where they are stored aboard ship.
2. (S/STD) VIEWER TASKING: Determine and describe how the illegal drugs are wrapped and where they are stored aboard ship.
3. (S/STD) COMMENTS: No inclemencies noted. A Summary of Information is attached to this report.
4. (S/STD) EVALUATION:
5. (S/STD) SEARCH EVALUATION:

HANDLE VIA STIPPLE CHANNELS ONLY

~~SECRET~~/NOFORN

CLASSIFIED BY: HQDA (DAMI-PO)
DECLASSIFY ON: OADR

~~SECRET~~ / STD

WORKING PAPER

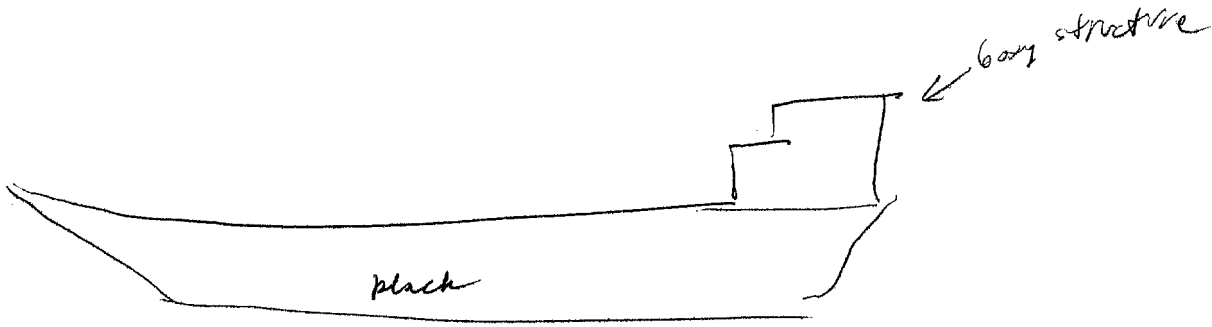
F: 9006
V: 095
D: 900301
T: 0715-0800
S: 02

SUMMARY OF INFORMATION

The vessel is a long, flat, black vessel with a boxy structure near the stern. The vessel is carrying medium sized, flat ended cylindrical containers. These are less than 2 feet high and less than 1.5 feet in diameter. The containers can only be opened once hence only a small fraction are checked by customs. The containers held a very thick liquid with solids (fist sized & smaller) suspended in it. The vessel is carrying a number of these containers which are arranged on rows on board. The contraband is hidden some of these containers. It is white, solid and in plastic bags the size of 2-5 lb sugar bags. One of these bags is in the bottom of a number of these cylindrical containers. Less than 1/3 of the containers have contraband in them. When looking at the arrangement of cylinders the second container from starboard in the second row from the bow has contraband in it. The containers containing contraband are (look, weight, labels, marks etc.) identical to those which don't. The only way anyone can tell which contains contraband is by how they are arranged on board.

HANDLE VIA STIPPLE CHANNELS ONLY

~~SECRET~~ / STD



↑
long flat vessel

easy to find
containers
with contraband

STARBOARD

bow

