

35 APR 90

SECRET/NOFORN

PROJECT SUN STREAK

WARNING NOTICE: INTELLIGENCE SOURCES AND METHODS INVOLVED

PROJECT NUMBER:	0127C (1ng)	SESSION NUMBER:	1
DATE OF SESSION:	24 APR 90	DATE OF REPORT:	25 APR 90
START:	1435	END:	1520
METHODOLOGY:	CRV	VIEWER IDENTIFIER:	052

1. (S/SK) MISSION: To describe the target sites (The Very Large Antenna Array telescope in New Mexico) in Stage 4 terminology.
2. (S/SK) VIEWER TASKING: Encrypted coordinates only.
3. (S/SK) COMMENTS: No Physical Inclemencies. This was 052's first stage 4 session. The 2 week break from sessions caused by the leave schedule caused a very negative effect on 052. There was some site contact in every stage, but it was minimal. The session was finally ended by objectifying 052's frustration and stopping to prevent more. Because there was such an extremely small amount of discernible data, no session summary was requested for this session. Post session training consisted of a complete review of the session for structural accuracy.
4. (S/SK) EVALUATION: *2*
5. (S/SK) SEARCH EVALUATION: N/A

MONITOR: 018

Summary report and brief forwarded.

HANDLE VIA SKEET CHANNELS ONLY

SECRET/NOFORN

CLASSIFIED BY: DIA (DT)
DECLASSIFY: OADR

052
24 Apr 90
Ft. Meade
1435
018

PI: none
AV: none

211265
562112



- A. Wavy Across
soft
- B. Water
- A. Angle
hard
- B. Structure

211265
562112



- A. Wavy Across
soft
- B. Water
- A. Angle
hard
- B. structure
- A. sloping down
smooth
- B. —

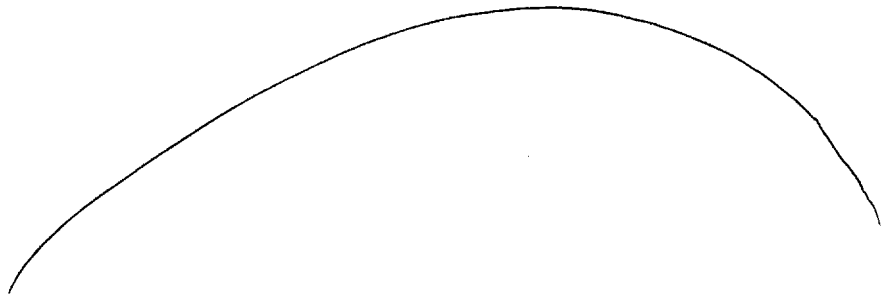
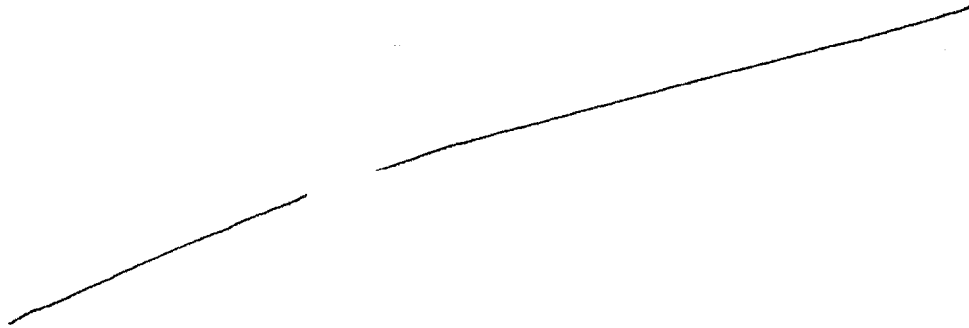
S2

Black

Blue

Brown

choking feeling



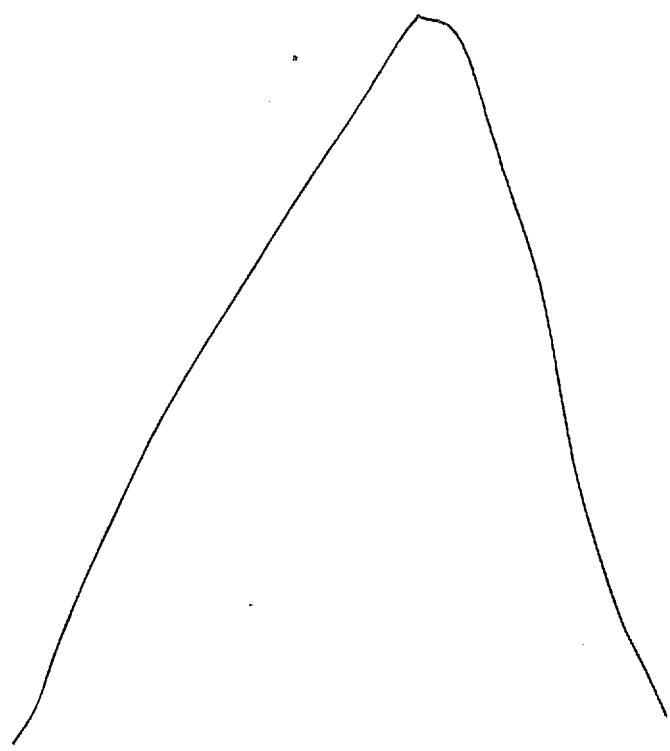
∪ Angles

∪ sharp

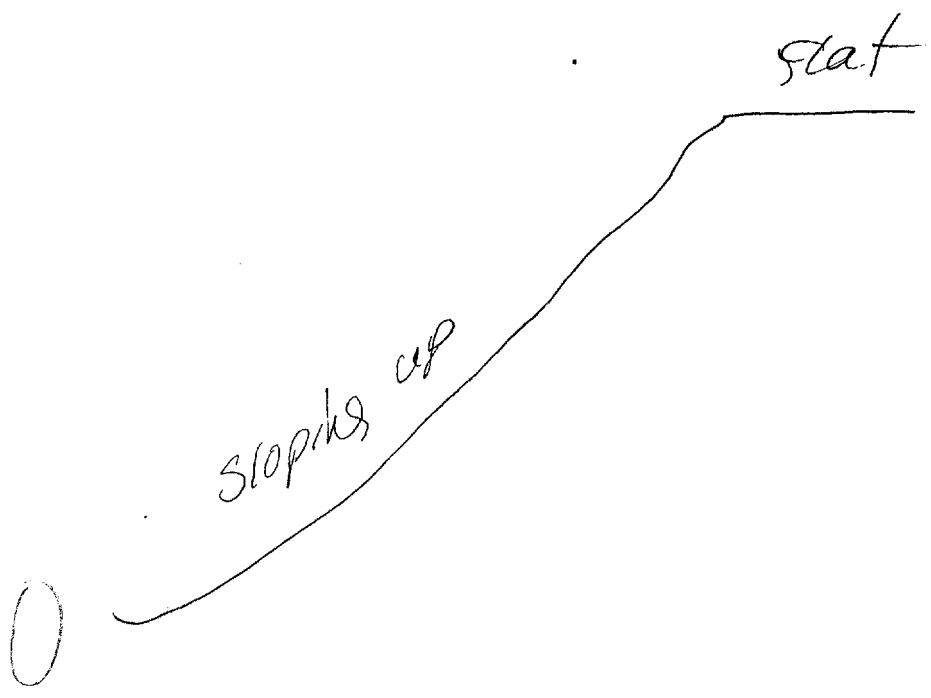
∪ pointed

∪ bright

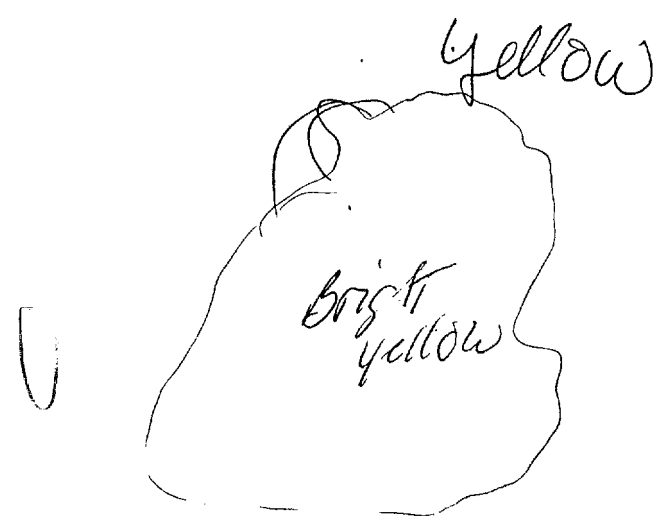
∪ Red



∪ pointy things

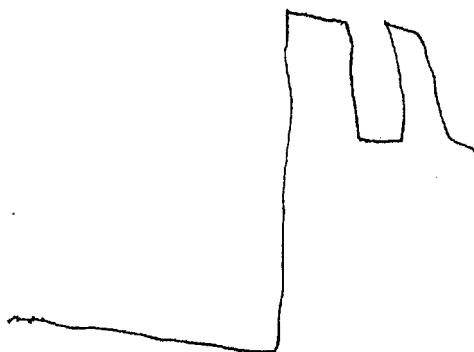


Stage 2



Blue

Vertical



211265

562112

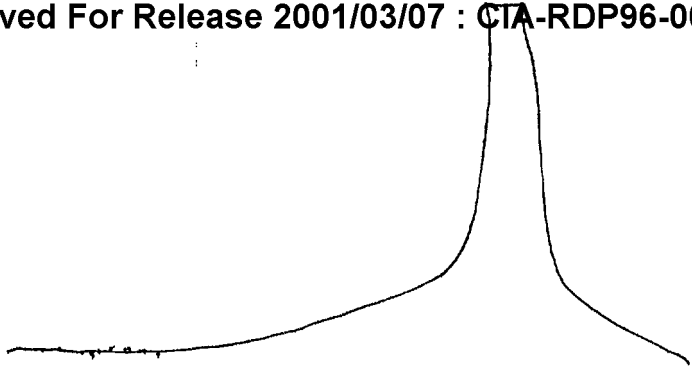
X A. Wavy Across
soft

Y B. Water

O A. Angles
hard

U B. Structures

211265
562112



Y A. Sloping up
Soft

Y B. Land

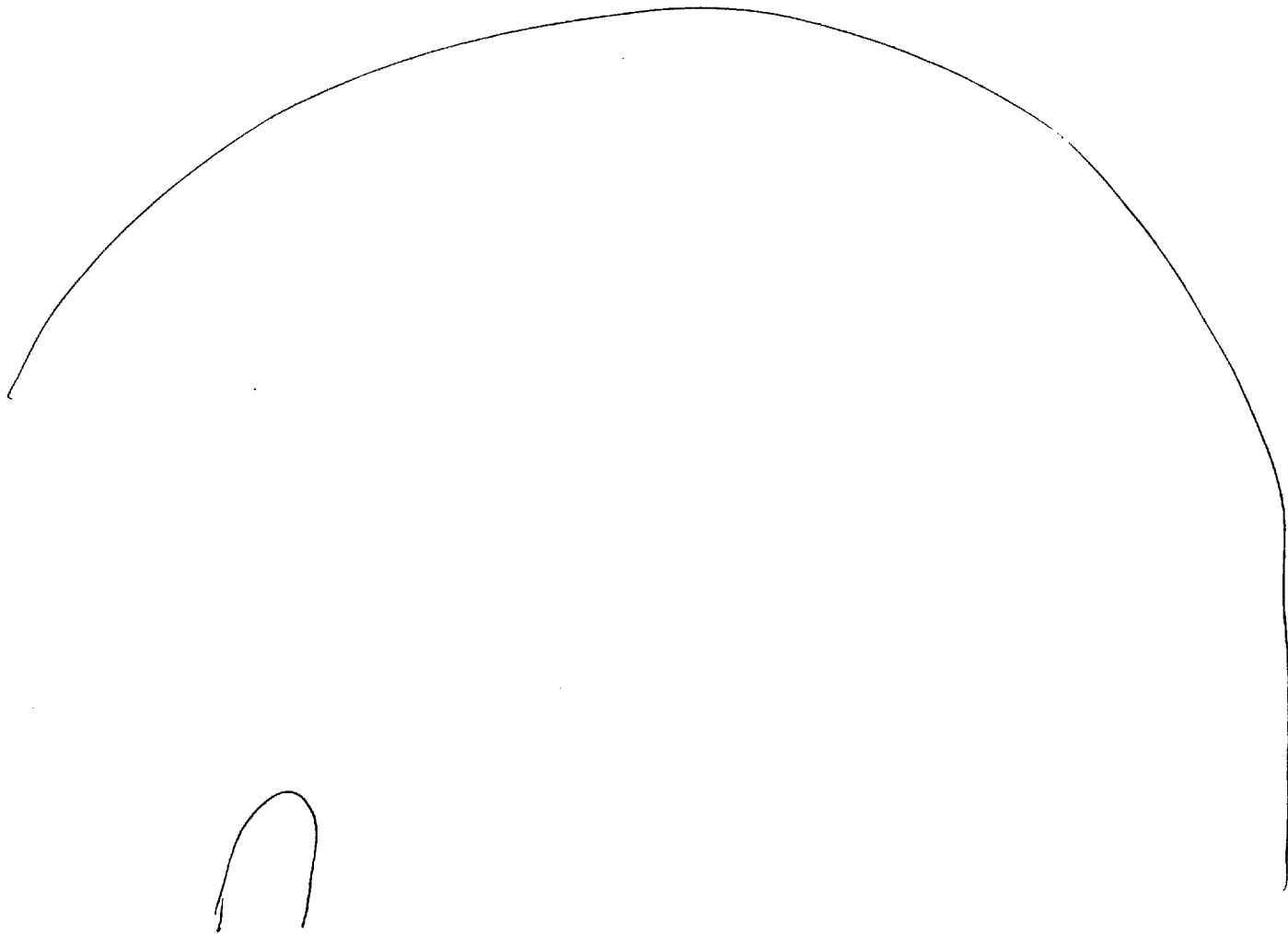
O A. Angle
hard

\ B. Structure

52

Black
Blue

Dark



ROC
Caverns
of
Cappidocia

AOL BK
o desert/
o sand

Blue

o people sounds

o high pitched

AOL
like female

From 500 ft. above
the site, the structures
should be perceivable

Blue

o Bright center

o Dark

DOG sound

ADL BK

Dog shape

too much BK

mind is racing.

- o Something in center
- o Surrounded by something else
- o Circular >

ADL BK

M — Storchengl

AF BK

Frustration.

Seems I forgot how to do this. Haven't done a ~~thing~~ in a while.

S4

S2 D (Circular) AI EI T I (something) AOL A/S

Green
Round →
Big →

Board

Dark

(pointy things)

Green
Blue

Sharp

Angles

Dirt small

Reel

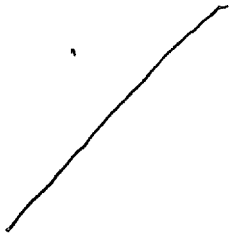
Round

Scan/
with system

S2 D AI EI T I ADC A/S

Bright

Big



(structures)

pointed

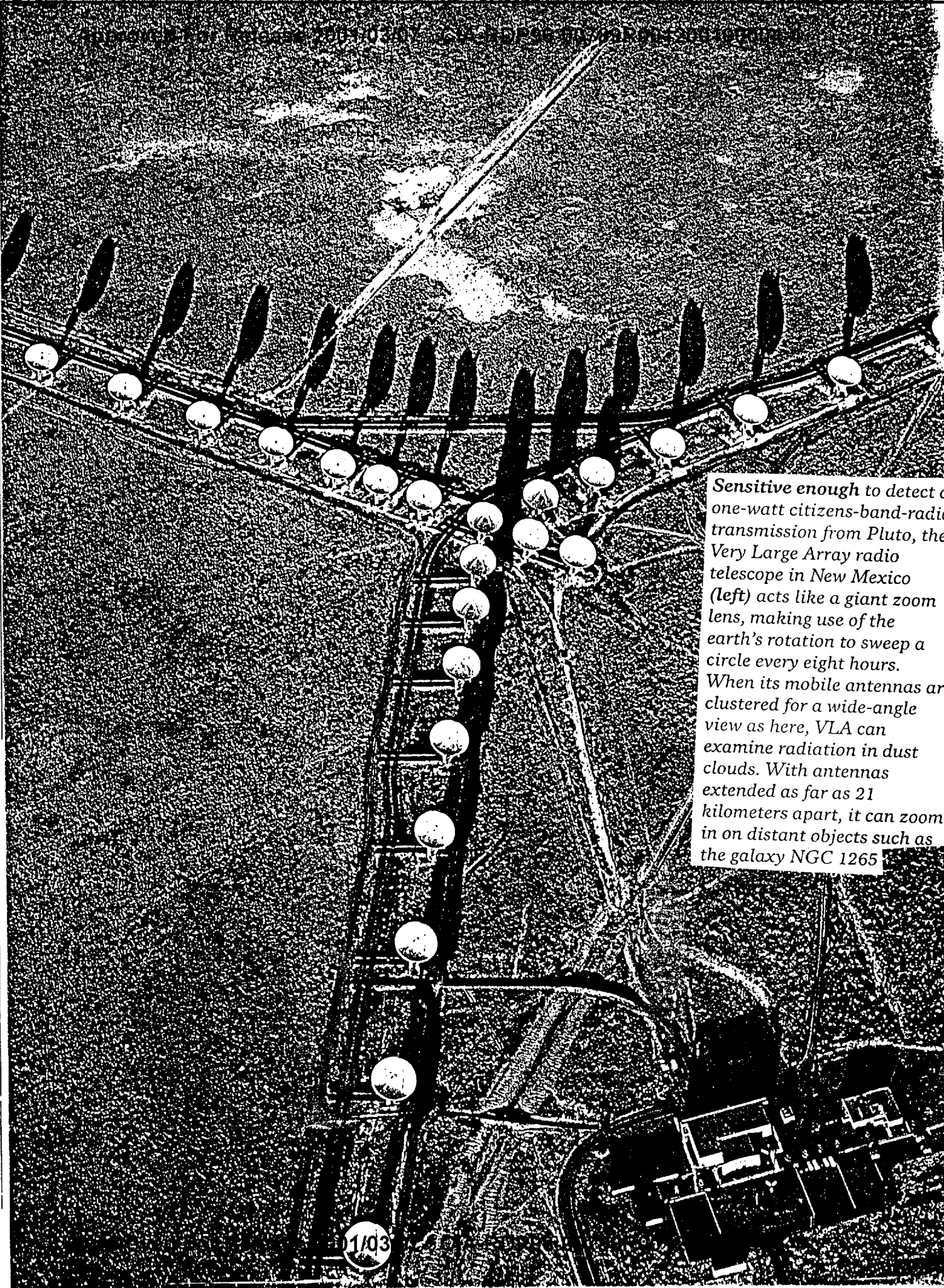
Big

vertical

Session end

1520

Very Large Array radio telescope New Mexico



Sensitive enough to detect a one-watt citizens-band-radio transmission from Pluto, the Very Large Array radio telescope in New Mexico (left) acts like a giant zoom lens, making use of the earth's rotation to sweep a circle every eight hours. When its mobile antennas are clustered for a wide-angle view as here, VLA can examine radiation in dust clouds. With antennas extended as far as 21 kilometers apart, it can zoom in on distant objects such as the galaxy NGC 1265

11/03