

REMOTE VIEWING TRAINING SESSION

```

*****
*
*
* Remote Viewer : LB
*
* Interviewer : FA
*
* Observer(s) : _____
*
*
* Date : 01/29/85
*
* Starting Time : 1310 hours, local
*
* Site # : 0099
*
* Site Acquisit.: CRV (CRV ERV PRV ARV BRV Other _____)
*
* Working Mode : GT (GT HE Other _____)
*
* Feedback class: C ( A B C Other _____)
*
*****

```

```

*****
*
* Ending time : 1345 hours, local
*
* Notes : 15 45'S 69 28'W
*
* Highest stage : 04
*
* Evaluation : +
*
*****

```

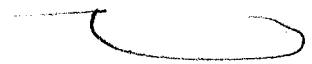
```

*****
*
* DESCRIPTION OF SITE
* Actual : The Uru Indian floating village on Lake Titicaca, Bolivia
*
* RV summ.: Straw native huts on land/water interface, maybe on water
*
*
*
*****

```

29 JAN 85  
1310 HRS  
FT. MEADE,  
(FRESO)

15° 45' S  
69° 28' W



A: ACROSS  
SMOOTH

B: \_\_\_\_\_  
A: DOWN  
CURVED  
SEMI-ROUGH

B: WATER C

A: RISING  
UNDOWN  
ROUGH

B: LAND C

L/W INTERFACE C

- S2: ✓ BROWN C
- SANDY PC
- GREEN C
- ✓ FRESH PC
- ✓ OPEN C
- ✓ SUNNY C
- ✓ BRIGHT C
- ✓ CLEAN C
- SALTY C
- BLUE C
- HEAT
- ✓ HOT AIR CFB
- SANDY FEEL PC

AOL BROWN

SEMI-VISUAL OF REFLECTION  
WELD LOOKING DOWN TO  
WATER - HOLD

AOL BRNDR  
BUILDINGS / CITY

15° 45' S  
67° 28' W



A: CONCRETE  
GROUND  
LAYER  
MAN MADE

B: \_\_\_\_\_

15° 45' S  
67° 28' W

MISS BRNDR

AOL BRNDR  
KINDLY MINOS.

15° 45' S  
67° 28' W



A: SMOOTH  
FEEL

B: WATER

A: ROUGH  
UNDOUBT

B: LAND

A: ROUGH  
JAGGED

B: L/W INTERFACE

15° 45' S  
67° 28' W



A: RULING  
SMOOTH  
NATURAL

B: LAND

SZ: FOSSES LIKE STRAW

3

15° 45' S

69° 28' W

MISS BREAK

15° 45' S

69° 28' W

A: MISS BREAK  
ADL BREAK  
END OF A BONE

15° 45' S

69° 28' W



A: CURVING  
BACK  
AIRY  
SMOOTH

B: ———

A: HARD  
CORROD

B: EARTH

S2: THIN  
SUBPONDOD

TAN C

DRY C

MANY C

TASTES LIKE SAND

RISING TO POINT

STRANDOD C

PARALLEL C

LOTS OF THESE

SURROUNDED BY OILWADDS C

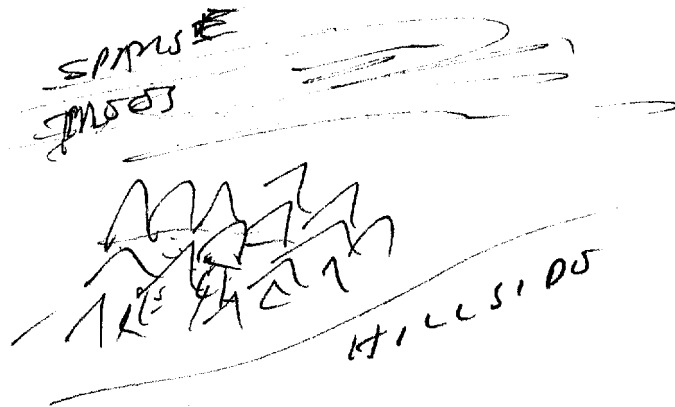
CLUSTOD C

REALLY DIRTY

MUD - DIRT

PLY

4



ROAD BRANCH  
LIKE A CLUSTER  
OF VARIOUS HUTS  
BY A HILLSIDE

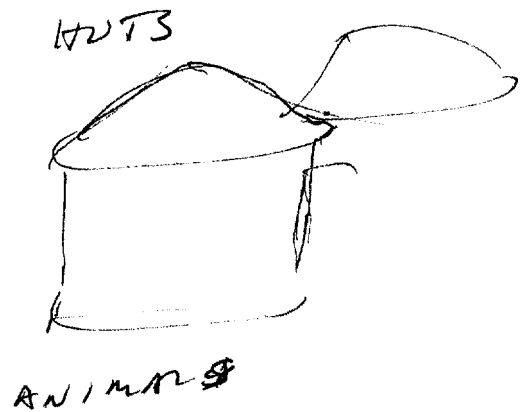
S2: D, A1, E1, T, 1, ROAD 1/3

LOW  
ROUND -  
GROUPS OF 5

ROAD BRANCH  
ZUPU/  
ZULL HUTS,

BUSBY  
TWO-COLORS  
POINTY  
ROUND PL

ONLY  
GROUPS



(5)

S2: D A I E T I AOL A/S

EVEN WITH SUCH OTHER  
SAMENESS

LOW

LOTS OF THEM

KIDS

~~AWAY FROM~~

AOL NADAK  
REMINDED OF  
SESSION W/ FLOATING  
VILLAGES ON STRAW  
ISLANDS

ON WATER

NATIVE HUTS - LOTS OF STRAW -  
HUTS -

SUMMARY:

SITE IS A GROUPING OF NATIVE HUTS  
MADE OF STRAW AND EARTH NEAR A LAKE/  
WATER INTERFACES IN A VERY DRY REGION.  
HUTS ARE POINTED ON TOP (ROUND POINTS).  
I DON'T KNOW WHETHER THEY ARE ON THE WATER  
OR NOT, BECAUSE I AM REMINDED OF ANOTHER  
SESSION, BUT I FEEL THEY MAY BE.

6

SZ: D KI E7 T I AOL A/S

HUTS

LOW  
NOT RAISED

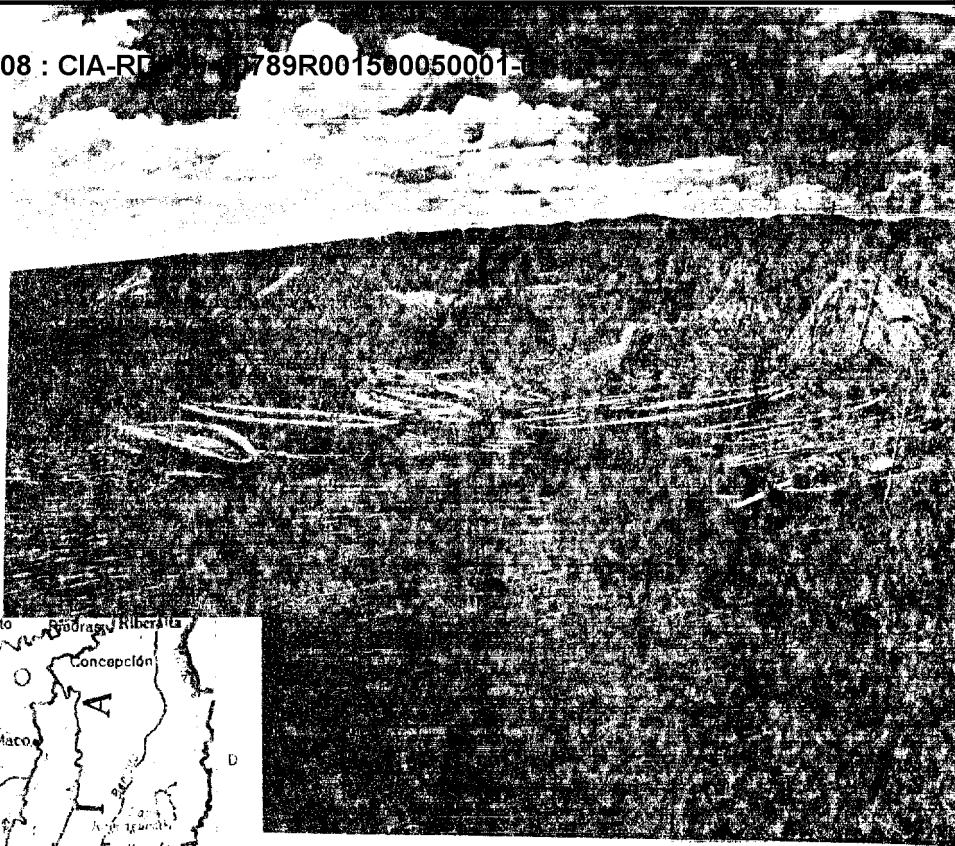
LIVING

REEDS

AOL BUILT  
THE REED SEA

SITE ~~IS~~ END

1345

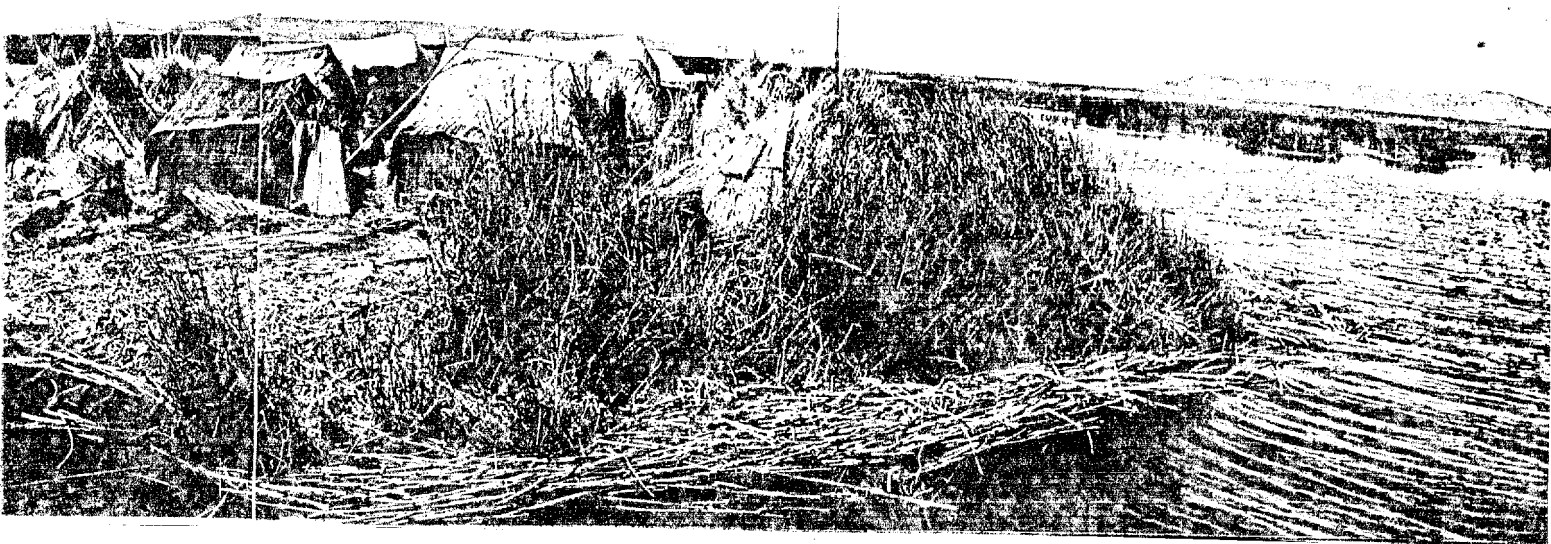


# Titicaca, Abode of the Sun

CPYRGHT



CPYRGHT



## Floating world of the Urus

**B**OUNTIFUL AND BUOYANT, totora reeds from Titicaca's shallows supply the Urus with material for homes and boats. Reeds even provide the "ground" these fisherfolk walk on, since they live on floating islands (above). As bottom layers rot, the Indians spread new layers on top.

Seated on the spongy surface (left), an Uru woman grinds barley for making gruel or mush.

Like the Aymaras, the Urus fashion boats of totora (below). Norwegian anthropologist Thor Heyerdahl theorizes that their ancestors may have learned the art from ancient Mediterranean mariners who crossed the Atlantic in similar boats of papyrus. Aymaras from Titicaca helped Dr. Heyerdahl construct a seagoing craft to test his theory (see the January 1971 *GEOGRAPHIC*).

