

REMOTE VIEWING SESSION DATA

 * Remote Viewer : PS 003
 * Interviewer : FA 051
 * Observer(s) : _____
 * _____
 * _____
 * Date : 10/08/85
 * Starting time : 0901 hours, local
 * Site # : 0143
 * Acquisition by: (CRV) ERV PRV ARV BRV Other _____
 * Working mode : (GT) HEM Other _____
 * Feedback class: A (B) C .
 *

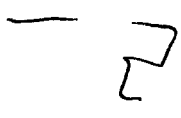
765701
709159

 * Ending time : 1056 hours, local
 * Notes : SVI Tng - MPI Stomach ache, Bill problem
 * Highest stage : VI
 * Evaluation : + 4
 *

 * Actual site : J.M. Davis Gun Museum
 * RV summary : pg 7
 * _____
 * _____
 *

Paul
8 Oct 85
Ft. Meade
20755
Mr. Fred
0901

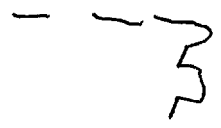
765701
709159



A. across
land
B. land

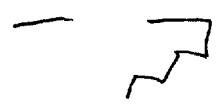
A. a
conjunction break

765701
709159



A
conjunction break

765701
709159



A - along
solid
B. land

A. along
solid
solid
solid
solid

Solid

B. S fracture

S. 2
white
smooth
grey
green
bumpy
cool
brown

rough
metallic taste
sweet smell
red
rounded
tall
blocky
slipping
large
curving
solid

A2 BK
intensity - 1/2 lb
1/3 piece



s. 2

D

AI

EI

T

I

AOL

ALS

bushes

people walking

Sunny

water sound

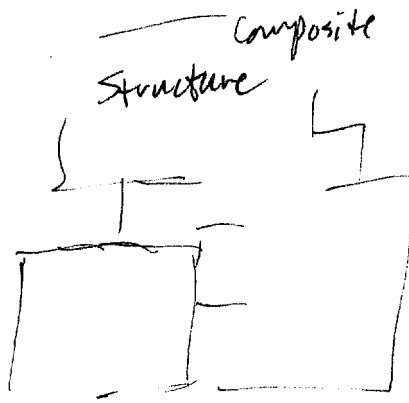
AOL BK
like a
fountain

AOL BK
SRI
complex

Pinkish
color

different
levels

separate
areas



S-2
blade

D AI EI T I AOL AS

rounded

Scientific

AOL Bk
Scientific

Composite
structure

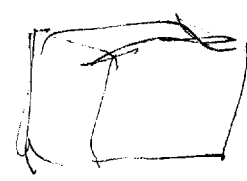
different
purposes

one goal

learning

working
seeking

buildings



inside

large
room

tables

people

concentrating
curious

~~process~~

AOL Bk
University

S-2

D

A I

E I

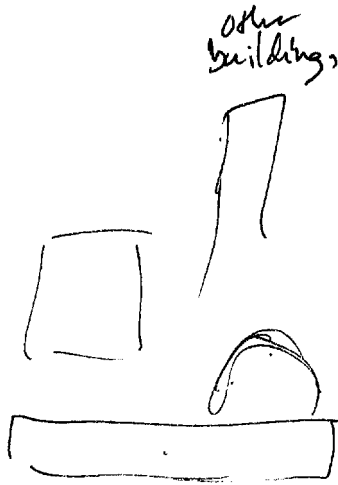
T

I

AdL

As

AdL Blk
Telescope



other building,

AdL Blk
20/6



inside

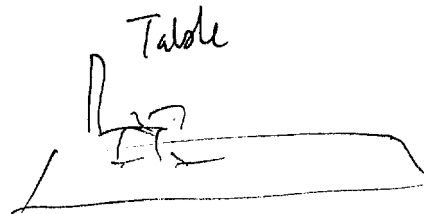
group of
people

Clusters
around
something

clustered

watching

participating



Table

Something on
table

S-2

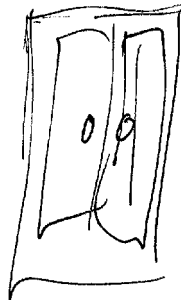
D A I E I T I A L M S
vandal

metal
glass

for Bk
Chemistry
experiment

equipment

cases



glass
front

Site is a ^{Composite} blocky structure ^{with} ~~with~~ different levels and separate areas. Inside one portion is a large room w/ tables & people concentrating & clustered around a table. There is equipment, metal & glass, and glass-fronted cases which are arrayed along walls; contain loose & hanging objects, & metal supports. Give the sense of display, storage, preservation & protection. An authority figure is the focus of attention of a group of people with some common element among them. The Authority figure is instructing the group on objects on table, normally kept in cases. Objects of interest in case are heavy, metal, oily, & have wood parts; there is writing on different color backgrounds in the cases. Objects suggest an AOL of "Weapons," in that they can be assembled/disassembled; are potentially dangerous, are metallic, smell oily, have various metal parts & rounded surfaces, must be "set up" & "oriented" properly.

end
10:56

S. 2

D

A2

EI

T

I

AOL

Als

glass-fronted
cases

AOL Bk
computer
boxes

~~Fall~~

tall

lined
up

lined up
along
wall

Something
inside
cases

AOL Bk
Five base

display
storage
preservation
protection

AOL Bk
Games like
people

A2 Bk
Pleasant

Musty
smell

S-2
white
smooth

D
rounded
off

A2

EI

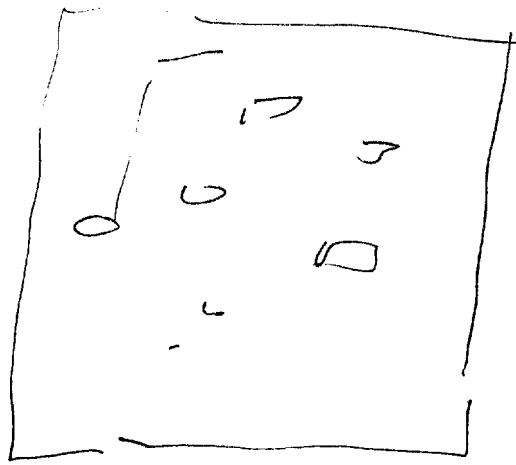
T I

del A/S

del Bk
refrigerator

del Bk
Natural Hist.
museum
w/ snakes
& skeletons

large open
lighted room



del Bk
feels like a
classroom

wood

Suz

D

AJ

EJ

T

I

ADL

ALS

SUI

study
research
preparation

things
hanging
inside

loose
objects

lighted
display

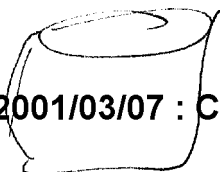
locked

ADL BK
Cadaver

object(s)
on table

soft
malleable
hard
or
edged

round object



S-2

D

AZ

EJ

T

J

HOL

AS

glass
metal

AZ BK
Chills

fall was
the
object



objects
in
cases

Books

fabric
metal
supports

BOL BK
wall (locks)
at UCS

HOL BK
looks like
bookshelves

Preserve
Objects
emanations ?

Jars
fluids
specimens
animals

AZ BK
Yuk
Formaldehyde
taste

AOL-D BK
biological
preservation.

5-2

D AI EI T I A/L A/S

Structure
blackboard
water color

A/L Bk
Schoolroom
w/ anatomy chart

A/L Bk
like my old
school

rooms

Administrative
functional
central
operative

lots of
rooms

Groups of
people

Varying
purposes

Subj; lots of
consideration

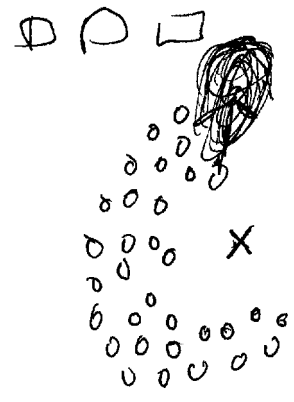
S-2

D AI EI T I A/L A/S

person

authority
figure

to be
"like an
"Instructor"
kinds are of
Mr. Wizard



AOL Bk
like a
Classroom
Situation

inanimate
objects

displayed

metal
wood
writing

Colours

Instructions
background
Information
"how-to"

AOL Bk
Military w/ weapons
museum
displayed

S-2 D AI EI T I AOL MS

prints

instructions

green

AOL BIC
military
doctrine/
Basic
training

bound
metal
implements

parts



pink
cyan
brown
green
orange

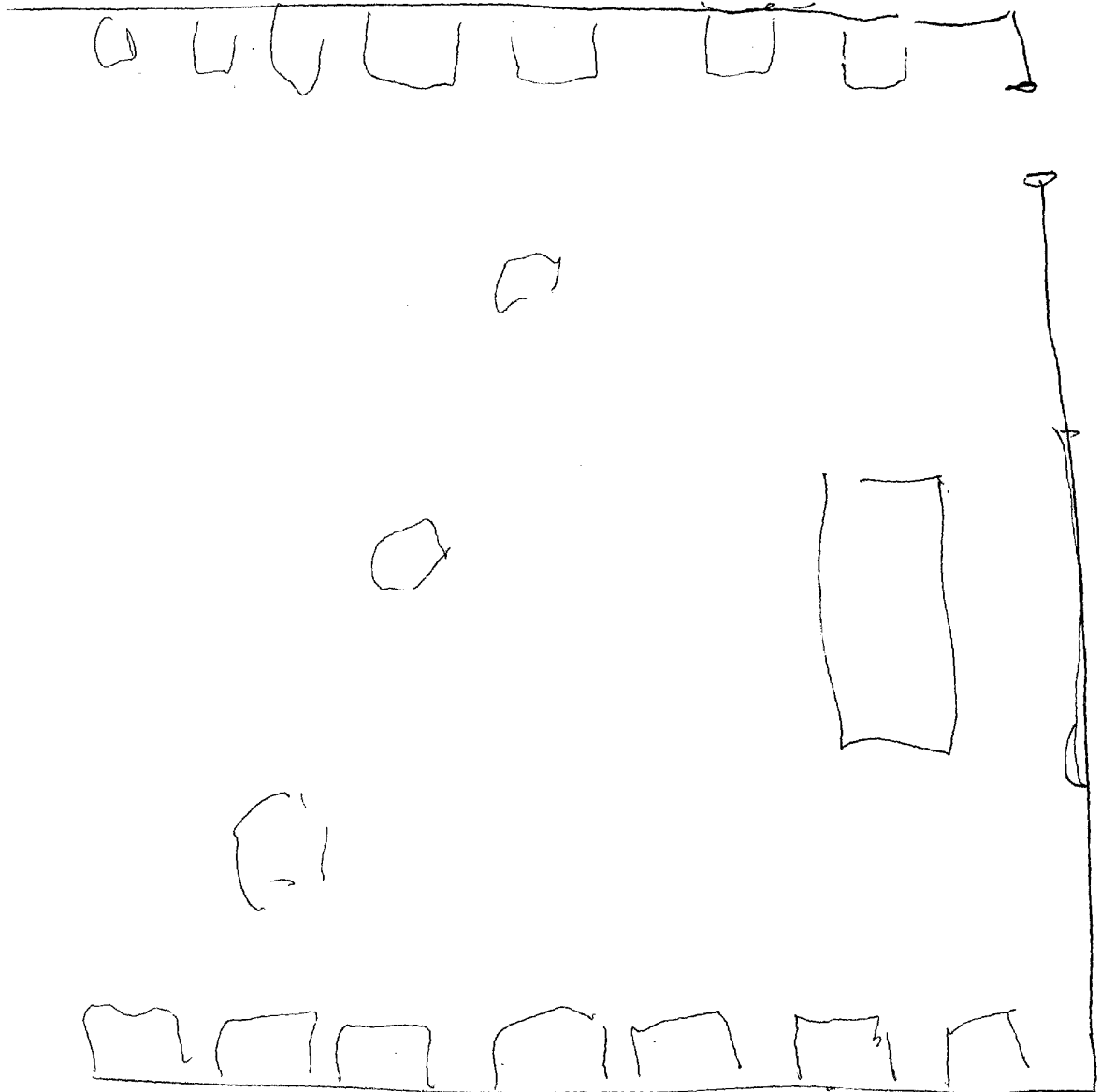
AOL BIC
distance

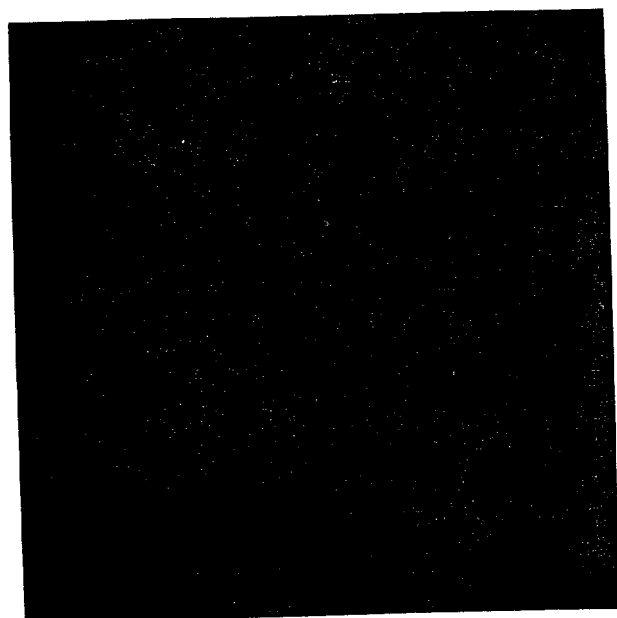
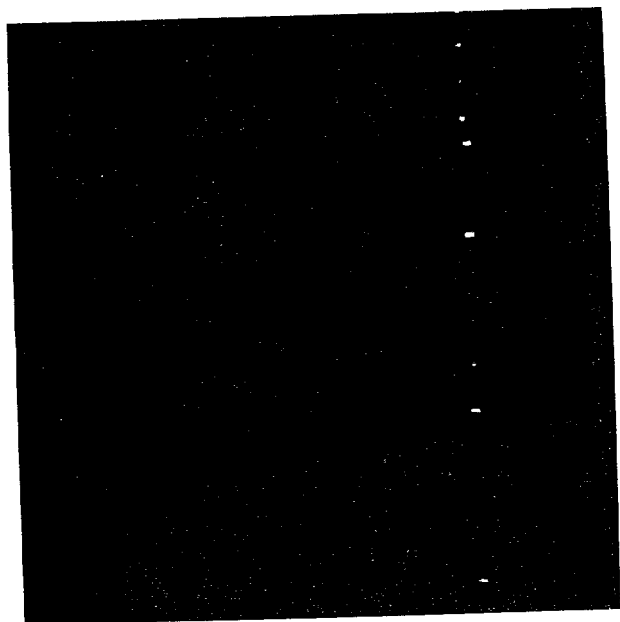
AO L
Basic training
prior examinations?
Group
Instructor
uniform
Class room

AO L
Ordinance
Prior examinations?
rooms
meter
parts
disassembly
assembly
utilization
OD color
hollow
containers
orientation of object
dangerous
swell
set up
arranged neatly
authentication wire
austere
primary color

H/L
 Displayed Weapons
 Prior emanations?
 oily metal
 heavy
 curved/curved around shape
 mechanical objects
 oily smells
 lettering
 glass case
 long round metal

AOL Visual
 machine gun





Approved For Release Museum Takes Aim At Gun History

For 7-year-old James Monroe Davis, swallowing a bitter spoonful of medicine was one of life's most dreaded evils. This time, he required more coaxing than usual. Take the medicine, his father said, and he would get a surprise.

The bribe worked. Young Davis opened, swallowed, and collected his reward—a boy's .410 gauge shotgun that cost \$1.50 in 1894. That was the beginning of a firearm collection Davis spent the rest of his life assembling. More than 20,000 firearms and related artifacts are now housed in the J.M. Davis Gun Museum in Claremore, Oklahoma.

Visitors can walk for a mile through the collection, viewing some relics that date far back, such as a 14th-century, hand-held cannon from the Orient. Along with the guns, the museum also has large collections of antique German steins, Indian artifacts, World War I posters, and John Rogers statuary, popular during the Victorian period. Rogers' sentimental portrayal of everyday people is similar to Norman Rockwell's works.

Davis moved to Oklahoma in 1916, after trading several thousand acres of Arkansas timberland for the Mason Hotel in Claremore. He worked the desk at night, which afforded him ample time for his passionate hobby. Gun collectors from all over the world journeyed to Claremore to trade pieces and information with the noted authority at the small hotel.

Before long, the lobby, hallways, dining room, and seven upstairs rooms were filled with firearms. At the entrance to the museum stands the old key box and registration desk, with dozens of guns arranged geometrically above it just as they were in the hotel lobby.

"On rainy afternoons, my wife and I would farm out our children and go to the hotel. We would spend hours looking at the guns, until our necks gave out," says Lee Good, who has been with the museum since it opened in 1969.

The collection spans the history of firearms from the mid-1300's and basically stops with weaponry from World War II. There are ornately decorated pistols, as well as handguns so small they can be hidden in a woman's palm.

Muzzle-loading rifles and Colt pistols, which played major roles in the history of this country, take up much of the collection. The muzzle-loading firearm was a primary weapon during the American Revolution, War of 1812, and Civil War.



At the J.M. Davis Gun Museum in Claremore, Oklahoma, weapons belonging to Bonnie Parker, John Wesley Hardin, and Pretty Boy Floyd are seen in the Gallery of Outlaw Guns.

Later, along with the Winchester rifle and Colt revolver, it helped settle the West.

There are about 1,000 Colt firearms in the collection, including a rare Walker Colt, manufactured in 1847. Following the advice of Texas Ranger Samuel Walker, the Colt Patented Firearms Company designed a pistol for mounted troops. The result was the .44 caliber model with a 9-inch barrel that weighs almost 5 pounds. The Walker Colt can be fired six times without reloading.

Many of the firearms feature unusual design styles. The wide-muzzled blunderbuss was used in the late 1700's and early 1800's. The muzzle of the largest one that's on exhibit measures more than 4 inches in diameter.

"The design of the blunderbuss was strictly a psychological thing," says Good. "It didn't scatter the shot like the muzzle suggests."

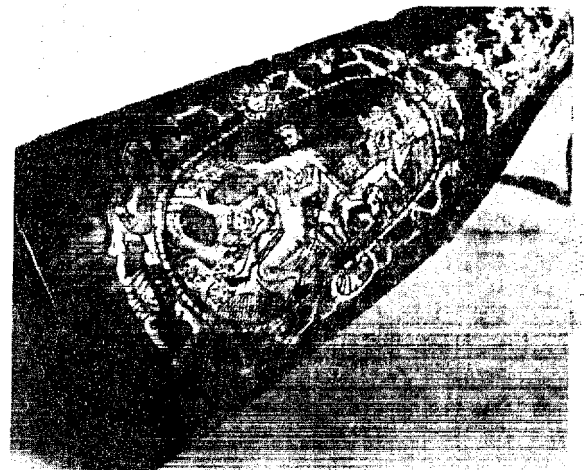
Many of the pieces indicate the gun-makers were expert craftsmen. One of the most ornate models is a rifle with a Miquelet lock mechanism, a style that originated in Spain around 1600. The gun is decorated with more than 50,000 pieces of natural and stained ivory, brass, and gold inlays. Another piece designed primarily as a work of art is a 17th-century German crossbow. Ivory, bone, and mother-of-pearl inlays form signs of the zodiac and other celestial figures along the stock.

The smallest gun in the museum is the

Kolibri, which weighs only 2.5 ounces and fires miniscule 2.7 mm cartridges. The largest is an .82 caliber musket made in China. The overall length of that gun is 8 feet, 10 inches.

Almost everyone who visits the museum is eventually drawn toward the Gallery of Outlaw Guns, to view firearms once used by such infamous owners as Pancho Villa, John Wesley Hardin, Pretty Boy Floyd, and Bonnie Parker.

The museum, at 333 North Lynn Riggs Blvd., is open daily from 8:30 a.m. to 5 p.m., and from 1 to 5 p.m. on Sunday. Additional information on the collection is available by writing to J.M. Davis Gun Museum, Box 966, Claremore, Oklahoma 74018; or call (918) 341-5707.



The stock of a 17th-century German crossbow is decorated with ivory, bone, and mother-of-pearl.