

REMOTE VIEWING SESSION DATA

* Remote Viewer : PS 003

* Interviewer : FA 021

* Observer(s) : _____

* _____

* _____

* Date : 05/29/85

* Starting time : 1322 hours, local

* Site # : 102P

* Site Acquisit.: (CRV) ERV PRV ARV BRV Other _____

* Working Mode : (GT) HEM Other _____

* Feedback class: (A) B C

345901
901164

* Ending time : 1536 hours, local

* Notes : AV-Military Truck, PE ASD Rogers

* Highest stage : V

* Evaluation : 1

* Actual site : Radio Tower

* RV summary : A/S ps 23

* _____

* _____

Ar
PI
Military Truck
ASD Paper

SG1J

29 May 85
Ft. Meade, MD
20755

SG1J

13:22

345901
901164



S-2
dk grey
hard

A. swell up
well
solid

B. sandstone

A. descending
angular
solid

B. sand

ADL BK
basalt cliffs

345901
901164



A. across
front
with
how
B. sounder

A.
Confusion break

345901
901164



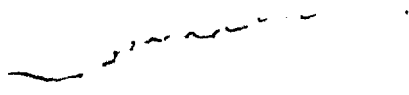
A. across
Confusion ble

345901
901164



A. across
waves
third
B. water

34 5901
901164



A - So
Confusion bk
AOL BK
Sand

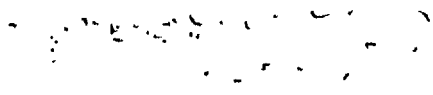
345901
901164



A. across
Arrow
B. Sand

AOL BK
Sand

34 5901
901164



A

AOL BK
Strong lishy
island

345901

901164

[Faint scribbled text]

S-2

A.
miss break

A. lumpy
hard

B. rocks

Confusion break

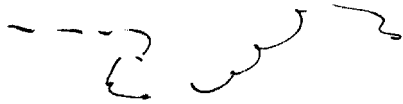
ACL Break
large field/area
of smooth water rounds
& stones

345901
901164



A. confusion ble

345901
901164



A. Unhappy
L
break
AOL BK
dent So. Wat

345901
901164



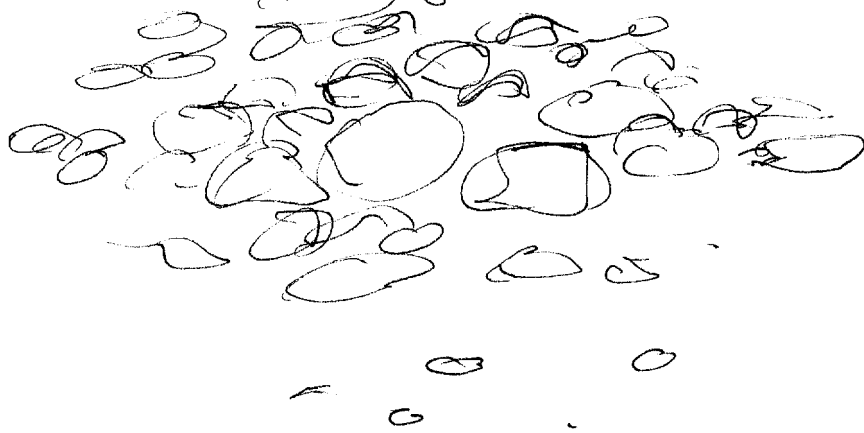
A. scattered
around
unhappy
solid

B.

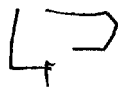
S-2

yellowish
cream color
"clacking" sound
Smooth
Cool
rounded
spreadout
low
flat
scattered

AZ DA
Pleasant features



395901
901164



A. around angles
solid
B. structures

S-2
black

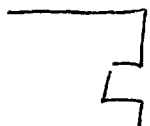
Adv BK
tan paper shades

345901.
901164



miss bk

345901
901164



A. along
angle
along

hand

B. Structures

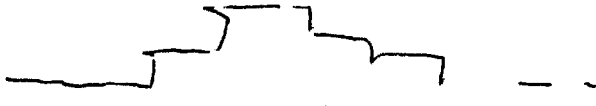
S-2
rising

Por Blc
power lily
tower

345901901.

break

345901
901164



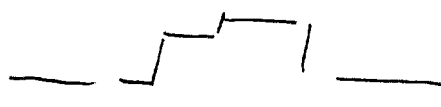
A. across
up and
up and
down
hard

B. structure

S-2
white
smooth
~~cool~~
dry
dusty taste
crunchy sound
brown

Hot Break
Pueblor

345901
901164



A - across
solid
B. hard

A. up and
up and
solid

B. structure

A. Hot BK
O can

345901
901164



Confusion blk

345901
901164



A. across
side
B. found

A. upward
up
side

B. structure

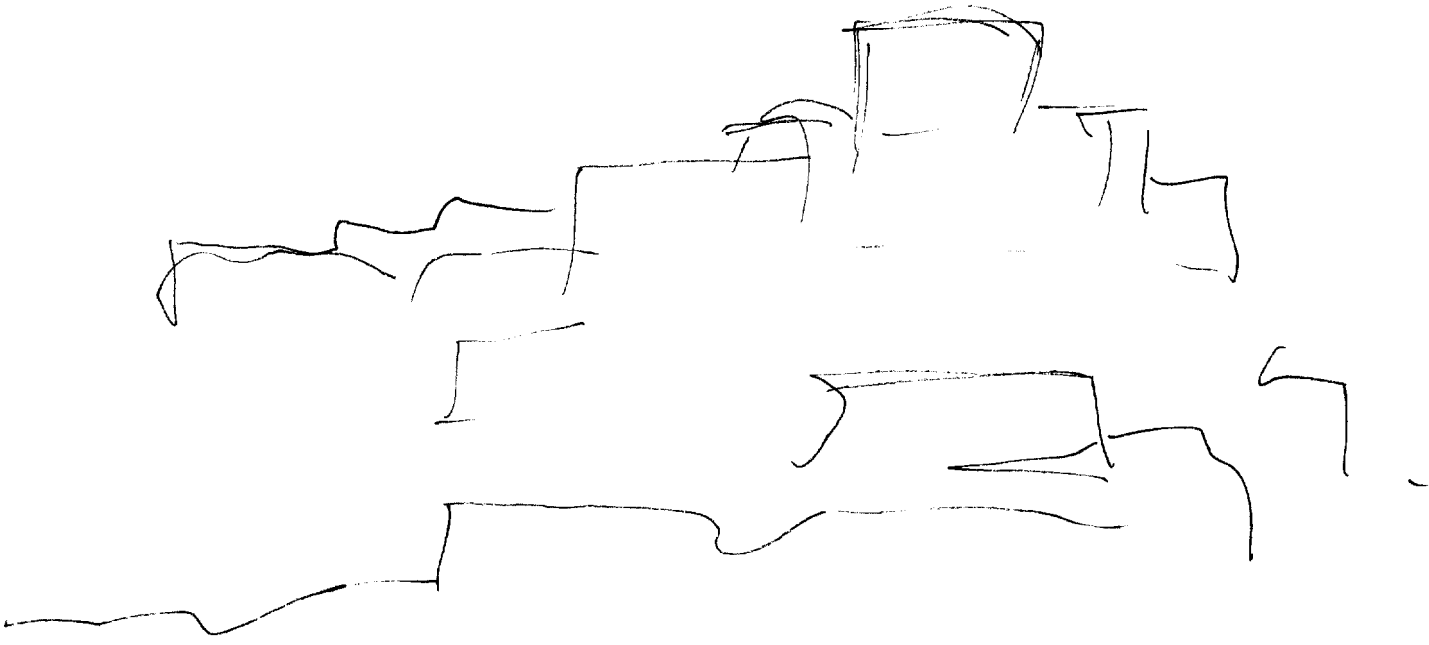
A. across
flow
B. water

S. 2
Chilly
grey
hazy
damp
misty
d. ind sound
sharp snide
shiny
green
black
blue black
reddish

brownish
uneven
rough
stocked
angular
high up
squat
stepped down
spread out

A.I. bk
lonely





AdC Bk
Hobian Sea Village
on Cliff.

Site is a set of structures near water in a relatively dry land-setting; ~~containing~~ many small, rounded objects, suggesting of water-polished stones are present. ~~Site~~ Structures are high up, squat, stepped down, & somewhat spread out.

S-2:
red +
white

12
A/L A/S
A/L B/L
SO. Nevada

colors
many
various

rocks

sandy

A/S
Sheep
AOL B/L
Navajo Sheep
ranch

slim

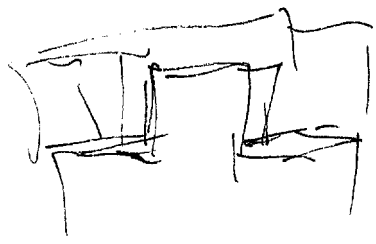
vegetation

hills

barren

open

Structure



tan

AOL B/L
like fort
in NA desert

S 2
green

D

A I

E I

T

I

ADL

ALS

Abroads

rustling
fresh
staircase
smell

AI Bk
pleasing
relaxing

ADL Bk
warm spr.
NV

people

working

Indigenous

AL Bk
African

Crofts

inland
springs

Slight
fear
anxiety

fixed
insecurity

hp

S-2
blade

D

AJ

EI

T

J

A/L

A/S

secondary

A/L BK
Africa
Tribal
dress

dusty

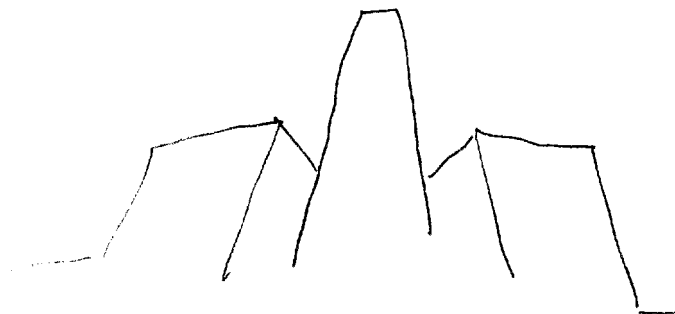
Trees

A/S
somewhat
backward
2d or 3d
world

red

A/L BK
Africa
standing
near palm

structure



15
ADL ALS

S. 2

stone

⊗

carved

abutting
adjoining

various
heights

open

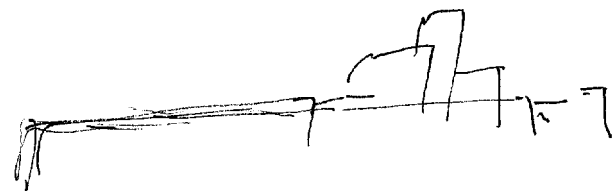
closed

old

old

ADL BK
Egyptian
Ruins

Structures



walls

yellowish

massive
solid

ADL BK
Samarqand

6

S-2

D

AJ

BI

T

I

AOL

ALS

blm

AOL Bk
Nubians

AOL Bk
Goats

ALS
Goats

AOL Bk
gems

Stones

AOL Bk
gemstone
mining

AOL Bk
site has to do
with acquiring,
processing, working,
& selling precious stones

ingrisc

~~SECRET~~

people
objects
emotions?
→ staffs
Clothing
buildings
Voices

people
attributes
emotions?

A/S
Stone
-viraged
well
w/dip
pole

people
attributes
emotions?
dark-skinned
indigenous
subst. stone bond
colorful clothing
long "
unintelligible language
pastoral
emaciated

people
subjects
emotions?

herding
surviving
grooming
raising
oppression
thieving

people
topics
emotions?

A/S
texts

AOL BK
Ethiopian



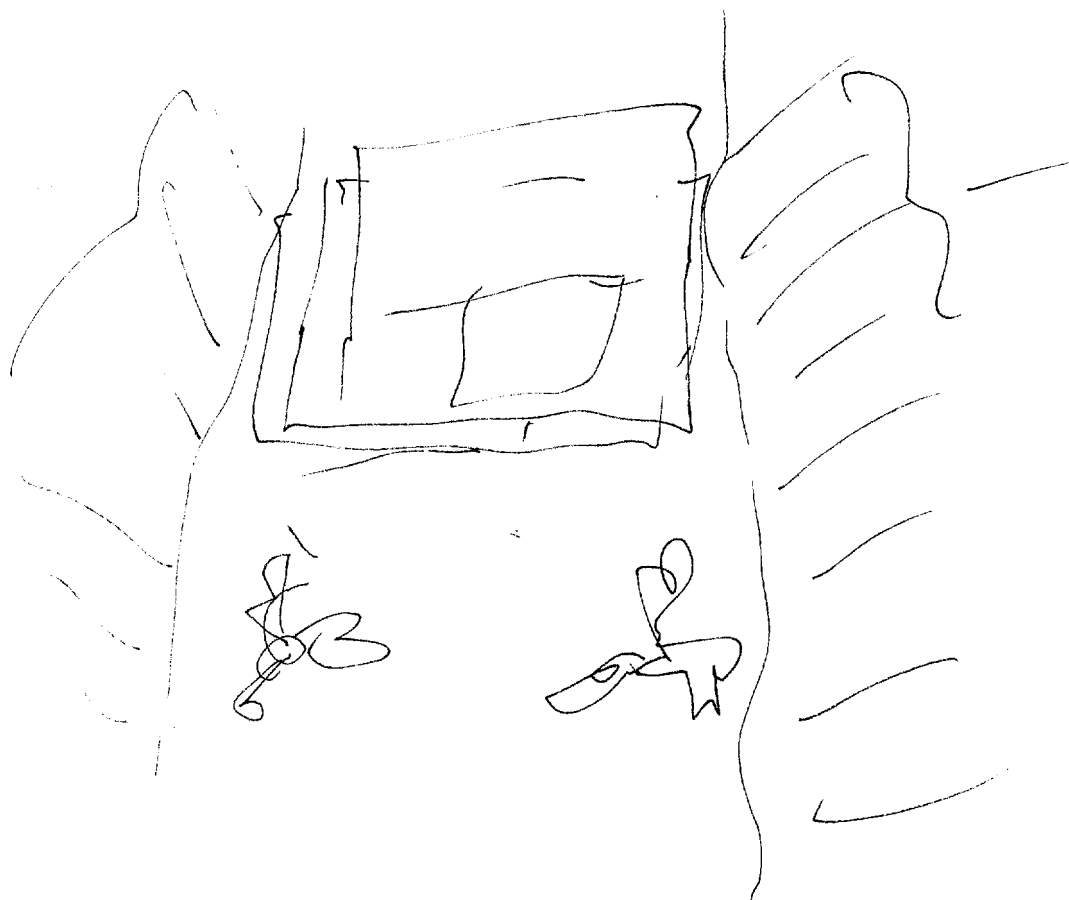
A. around
angles
hard

B. structure

AR BK
Faction began Post in
N. Africa

AR BK
Vast expanses
of Sand

AR BK
Castle in
Iran



Box Bk
St. Katharine's
Monastery

Unintelligible
language
objects
enumerations?
People
Culture
History
empire

Unintelligible
language
attributes
enumerations?
Global
rapid
foreign
non-European
student

APL BC
poly-semantic

Unintelligible
language
subjects?
day-to-day living
conversations
Coordination
Cultural interaction
directly
personal communication

APL BC
African
Usulu usulu
Zimbabwe

Unintelligible
language
topics?

children
animals
herding
chores
politics
concerns
barter

Empire
Objects
Emanations ?

Cities
nations
Subjects
armies
monuments
rulers
barbarians
weapons
coins
goods
vessels
animals
cultures
forifications

Empire
attributes
emanations?
exploitive
imposed
arbitrary
bloodthirsty
demanding
extracting
enslaving
brutal
widespread
foreign
long-lived

Empire
Subjects
Emanations?
Conquest
Subjugation
Colonialism
religion
trade
exploitation
enslavement
superiority
mediocrity

for
D. Howard
P. 123

Empire
topics
evolution?
expropriation
education
cultural
beneficial

HOLBIC
Middle
Eastern

Animals
Objects
Emanations?
harnesses
loads
foods
food
clothing
sounds
smells

~~animals~~
animals
attributes
emanations?
domestic
important
load-bearing
herding
transportation
disorganized
Economically important
heavily used
culturally central
Ubiquitous

animals
 subjects
 excavations?
 diggings

animals
 topics
 excavations?
 food
~~food~~
 forage
 subsistence
 motive power
 fuel

end
 1536

Site is a pastoral area involving dark skinned people in a semi-arid setting very dependent on a variety of domestic animals. People wear flowing, colorful clothing. Structures present are old, multi-level, walled, stone, furnished in color, adjoining abutments, with both open & covered areas. Though they are old they still are in use. An empire seems to have been historically important to the area. Area is very rocky & hilly, possibly of predominantly reddish colors.