

' OTHER B ' SUMMARY

Source #101

SG1A

The building at coordinates [REDACTED] is large, wide and has several levels. Through the north side of the building, a form of energy flows out, or in, along a linear path. At the end of this path, some distance from the building, is a structure where the energy takes on a fan-shaped pattern.

A similar linear flow passes through the south side of the building. This path terminates at a housed, metal structure where the energy weakens or dissipates in a manner unlike that to the north (NFI).

These energy 'lines' are connected to monitoring equipment at two separate points within the building. The equipment has glass panels, dials and bright yellow and/or white lights. There are levers on the walls nearby and separate (control) booths. Both lines of energy, (N and S), are linked together in some way within the building by yet a different kind of energy (NFI).

Another form of energy goes up and back down through the top of the building. It takes the form of a powerful beam with a feeling like heat. The beam is directed/aimed at a rectangular shaped device in space. The ratio of the information passed on this beam is two-thirds up/one-third down.

The 'down link' passes into a round, box-like device and thence through electron tubes and circuitry to a large computer. From here data is distributed to smaller, specialized computers and to printers which produce graphs and charts with lines, colors, squares and cubes (NFI). Ideas associated with these things are: global, hemisphere, sorting, analyzing, boundaries and limits. This operation is entirely automated, with digits/symbols being passed back and forth from machine to machine. Humans, (who are mainly technician types and 'watch officers' on continuous shift work), are not involved until late in the process.

The overall feel for this building and its mission is generally one of centralized monitoring, receiving, processing and data transmission. However, strongly present also are ideas of: subterfuge, clandestine, disguising, misleading and cover.

Additional Tasking:

A structure located 245 meters WSW of the building discussed above was generally described as a low, square, thick, reinforced building in a 'sensitive area.' It was recognized as an ammo storage area

Monitor's Summary

SG1A

The building at coordinates [REDACTED] is large, wide and has several levels. Through the north side of the building, a form of energy flows out, or in, along a linear path. At the end of this path, some distance from the building, is a structure where the energy takes on a fan-shaped pattern.

A similar linear flow passes through the south side of the building. This path terminates at a housed, metal structure where the energy weakens or dissipates in a manner unlike that to the north (NFI).

These energy 'lines' are connected to monitoring equipment at two separate points within the building. The equipment has glass panels, dials and bright yellow and/or white lights. There are levers on the walls nearby and separate (control) booths. Both lines of energy, (N and S), are linked together in some way within the building by yet a different kind of energy (NFI).

Another form of energy goes up and back down through the top of the building. It takes the form of a powerful beam with a feeling like heat. The beam is directed/aimed at a rectangular shaped device in space. The ratio of the information passed on this beam is two-thirds up/one-third down.

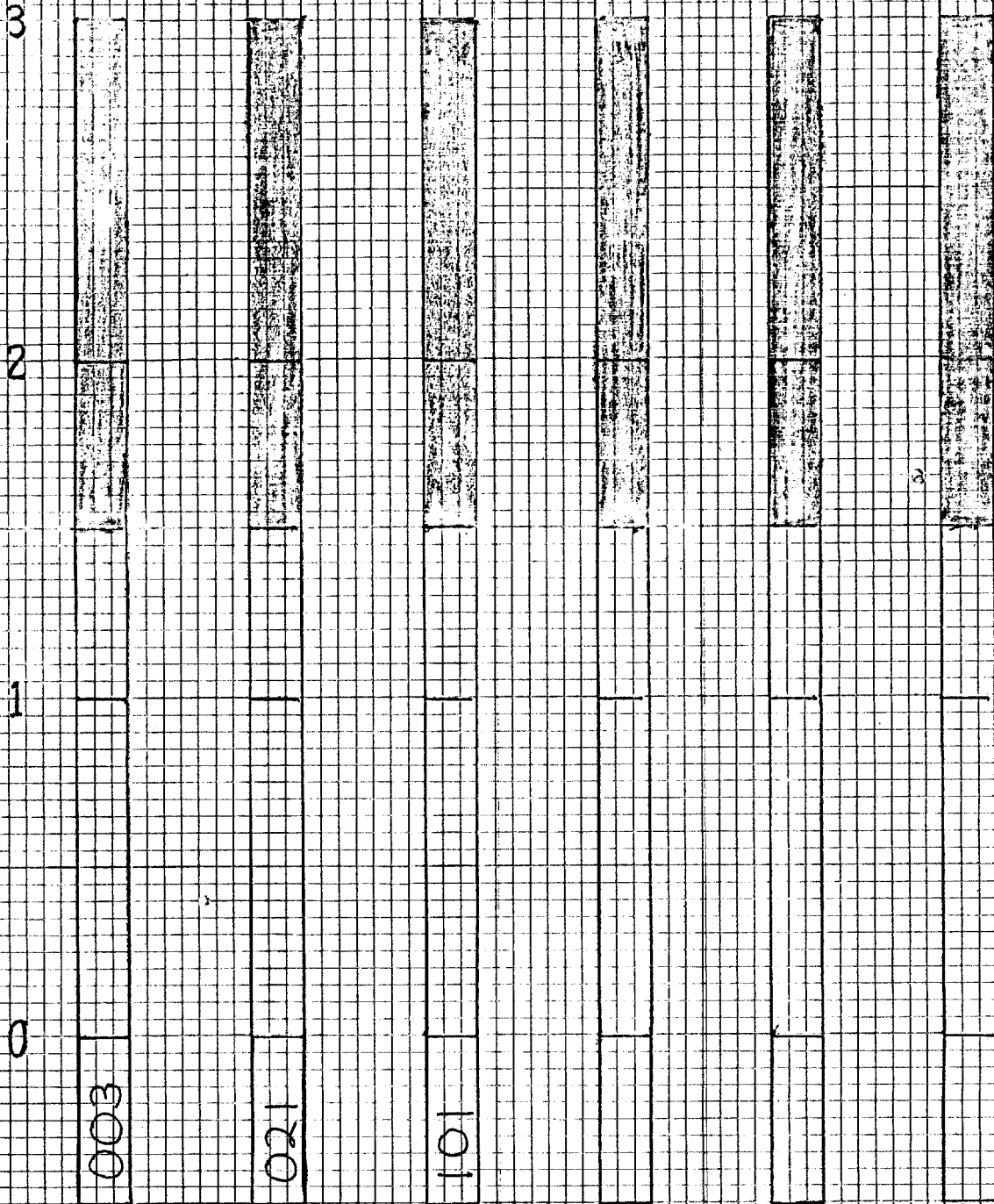
The 'down link' passes into a round, box-like device and thence through electron tubes and circuitry to a large computer. From here data is distributed to smaller, specialized computers and to printers which produce graphs and charts with lines, colors, squares and cubes (NFI). Ideas associated with these things are: global, hemisphere, sorting, analyzing, boundaries and limits. This operation is entirely automated, with digits/symbols being passed back and forth from machine to machine. Humans, (who are mainly technician types and 'watch officers' on continuous shift work), are not involved until late in the process.

The overall feel for this building and its mission is generally one of centralized monitoring, receiving, processing and data transmission. However, strongly present also are ideas of: subterfuge, clandestine, disguising, misleading and cover. ✓

Additional Tasking:

A structure located 245 meters WSW of the building discussed above was generally described as a low, square, thick, reinforced building in a 'sensitive area.' It was recognized as an ammo storage area

PROJECT B



REMOTE VIEWER

PHICM-10 X 10 TO 1 INCH
10TH LVE HEAVY