

Approved For Release 2000/08/08 : CIA-RDP96-00789R002100220001-4



PROJECT SUN STREAK

U3162.11

Approved For Release 2000/08/08 : CIA-RDP96-00789R002100220001-4



PSYCHOENERGETICS

REMOTE VIEWING (RV)

- ABILITY TO DESCRIBE REMOTE AREAS OR CONCEALED DATA VIA UNKNOWN MENTAL PROCESSES

REMOTE ACTION (RA)

- ABILITY TO INFLUENCE PHYSICAL OR BIOLOGICAL SYSTEMS VIA UNDEFINED PHYSICAL MECHANISMS

U3162.05



SECRET

DIA'S MOTIVATION FOR PURSUING THIS PROGRAM

- **ESTABLISH WHETHER A THREAT EXISTS**
- **IF SO, WHAT ARE ITS DIMENSIONS?**
- **CAN THE PHENOMENON BE EXPLOITED?**

SECRET

S3162.01

SG1A

Approved For Release 2000/08/08 : CIA-RDP96-00789R002100220001-4

Next 1 Page(s) In Document Exempt

Approved For Release 2000/08/08 : CIA-RDP96-00789R002100220001-4



SECRET

GRILL FLAME REPORT

REMOTE VIEWING (RV) IS A REAL PHENOMENON,
AND IS NOT DEGRADED BY DISTANCE OR SHIELDING
RV ABILITY CAN BE IMPROVED BY APPROPRIATE
TRAINING

RV HAS POTENTIAL FOR U.S. INTELLIGENCE
APPLICATIONS

POTENTIAL THREAT TO U.S. NATIONAL SECURITY
EXISTS FROM FOREIGN SOURCES

SECRET NOFORN

S3162.08



SCIENCE PANEL

<u>NAME</u>	<u>TITLE/ORGANIZATION</u>	<u>AREA</u>
DR. DONALD M. KERR	DIRECTOR, LOS ALAMOS NATIONAL LABORATORY, LOS ALAMOS, NM	NUCLEAR PHYSICS CHAIRMAN, COMMITTEE ON R/D, INTERNATIONAL ENERGY AGENCY
DR. FRED ZACHARAISON	PROFESSOR OF PHYSICS, CALIFORNIA INSTITUTE OF TECHNOLOGY, PASADENA, CA	THEORETICAL PHYSICS, JASON COMMITTEE
DR. W. ROSS ADEY	CHIEF OF STAFF, RESEARCH DIV, VETERANS ADMINISTRATION HOSPITAL, LOMA LINDA, CA	NEUROPHYSIOLOGY, BIOEFFECTS OF NIEMR

U3102-13



SECRET

SCIENCE PANEL'S REPORT

PRINCIPAL FINDINGS

IMPLICATIONS ARE REVOLUTIONARY
MERITS CONTINUED FUNDING IN THE
NATIONAL INTEREST
EVIDENCE TOO IMPRESSIVE TO DISMISS
AS MERE COINCIDENCE
LACK OF PHYSICAL MODEL DOES NOT
PRECLUDE EXISTENCE
INITIATE A FIVE-TO-TEN YEAR PROGRAM
INVOLVE ADDITIONAL LABS

SECRET NOFORN

S3162.09



ANTICIPATED APPLICATIONS

DESCRIPTION OF OTHERWISE INACCESSABLE AREAS

**TIP-OFF FOR REDIRECTING OTHER COLLECTION
ASSETS**

NARROW DOWN POSSIBILITIES

LOCATION

OVER-ALL FUNCTION

ANTICIPATE NEAR-TERM ACTIVITIES OR EVENTS

DETERMINE PRESENCE/ABSENCE OF TARGETS

TREATY MONITORING

HOSTAGES

35L3162-4



VIEWER'S RESPONSE CALIBRATION SESSION

desert. — C

acols: — Hoover Dam —
Breaks

A tall
B structure S
A angles
B Building .clf.

aal dish antennas —
huge —————

rows of them

34L3162-4

CPYRGHT
Approved For Release 2000/08/08 : CIA-RDP96-00789R002100220001-4



RADIO TELESCOPE NEW MEXICO



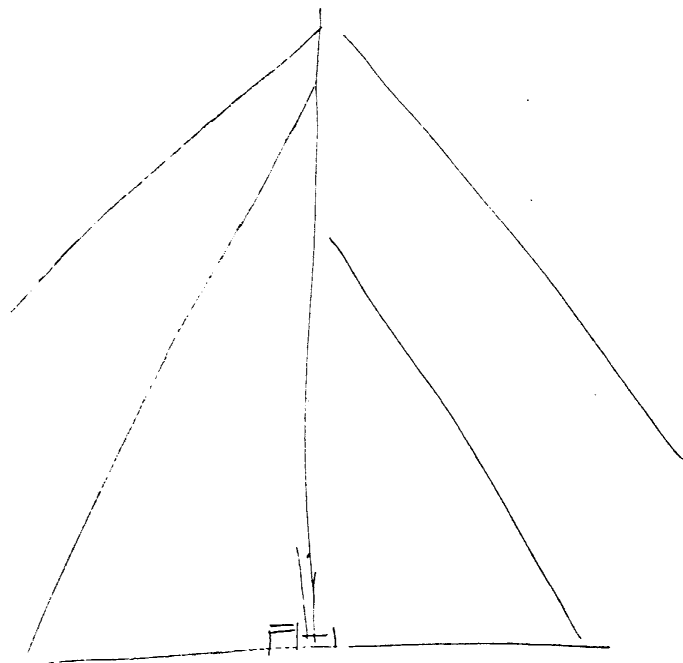
32L3162-4

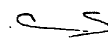
Approved For Release 2000/08/08 : CIA-RDP96-00789R002100220001-4



CALIBRATION SESSION

VIEWER'S RESPONSE



like radio tower : 
flat area C
Swampy
smells - P

31L3162-4

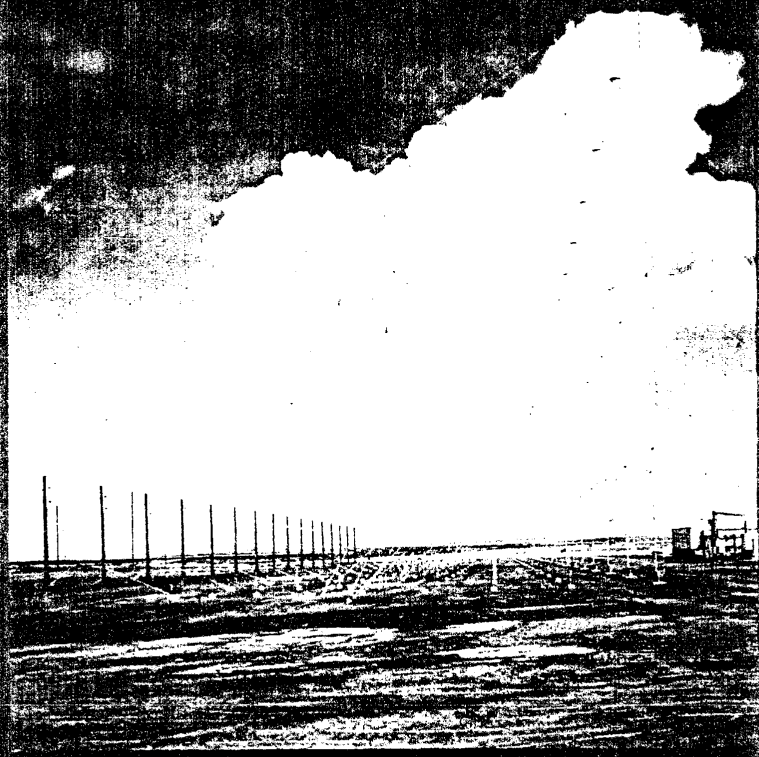
Approved For Release 2000/08/08 : CIA-RDP96-00789R002100220001-4



ANTENNA FARMS

LOST HILLS, CA

33L3182-4



Approved For Release 2000/08/08 : CIA-RDP96-00789R002100220001-4

CPYRGHT

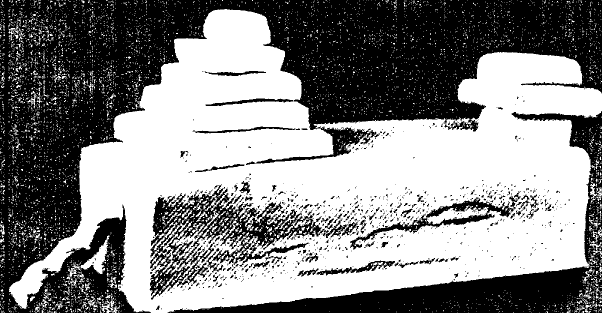
Approved For Release 2000/08/08 : CIA-RDP96-00789R002100220001-4



VIEWER'S RESPONSE



TULUM RUINS, MEXICO



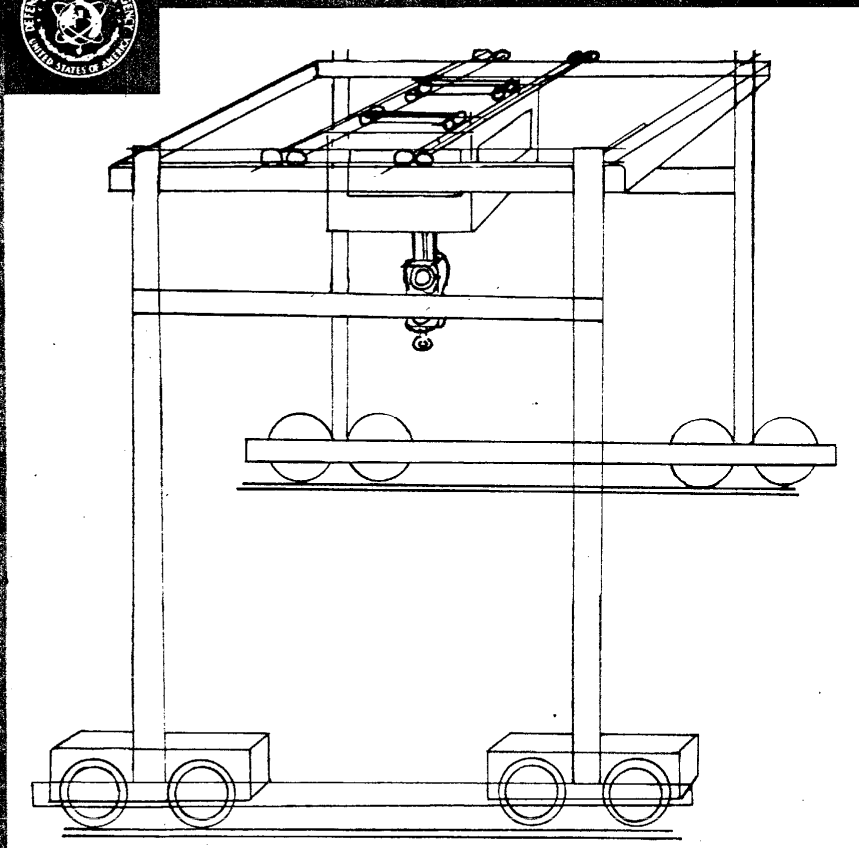
VIEWER'S RESPONSE

13L3162-2

SG1C

Approved For Release 2000/08/08 : CIA-RDP96-00789R002100220001-4

Approved For Release 2000/08/08 : CIA-RDP96-00789R002100220001-4



VIEWER'S RESPONSE

"I can see some very heavy...looks like railroad track, but they're spread much too wide so it looks like a riding gantry."

19L3162-2

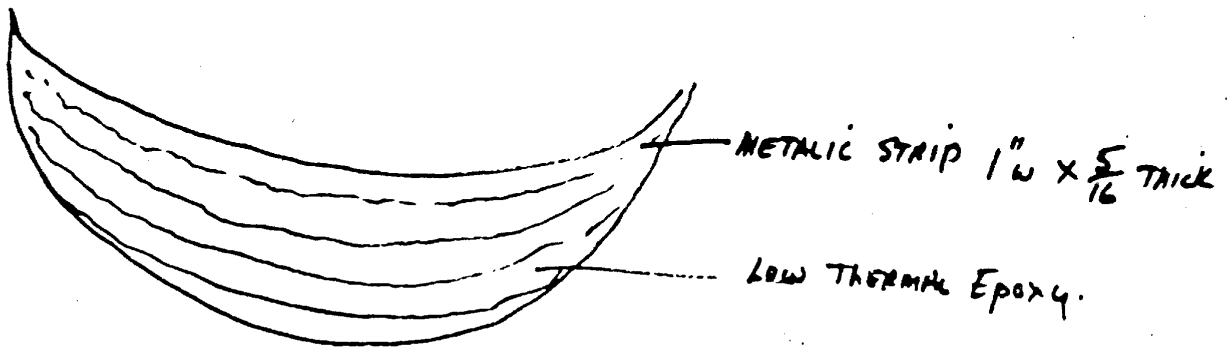
SG1C

Approved For Release 2000/08/08 : CIA-RDP96-00789R002100220001-4

Approved For Release 2000/08/08 : CIA-RDP96-00789R002100220001-4



VIEWER'S RESPONSE



20L3162-2

SG1C

Approved For Release 2000/08/08 : CIA-RDP96-00789R002100220001-4

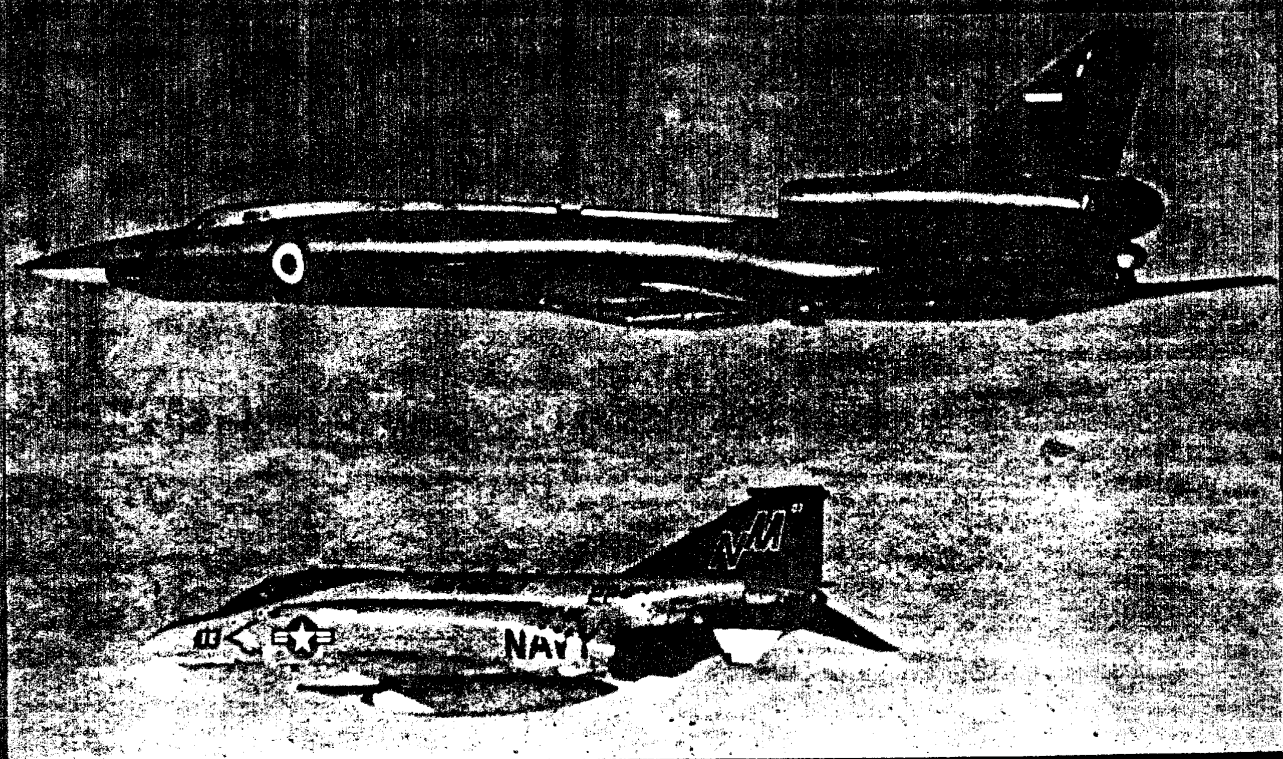
Next 2 Page(s) In Document Exempt

Approved For Release 2000/08/08 : CIA-RDP96-00789R002100220001-4

Approved For Release 2000/08/08 : CIA-RDP96-00789R002100220001-4



BLINDER C

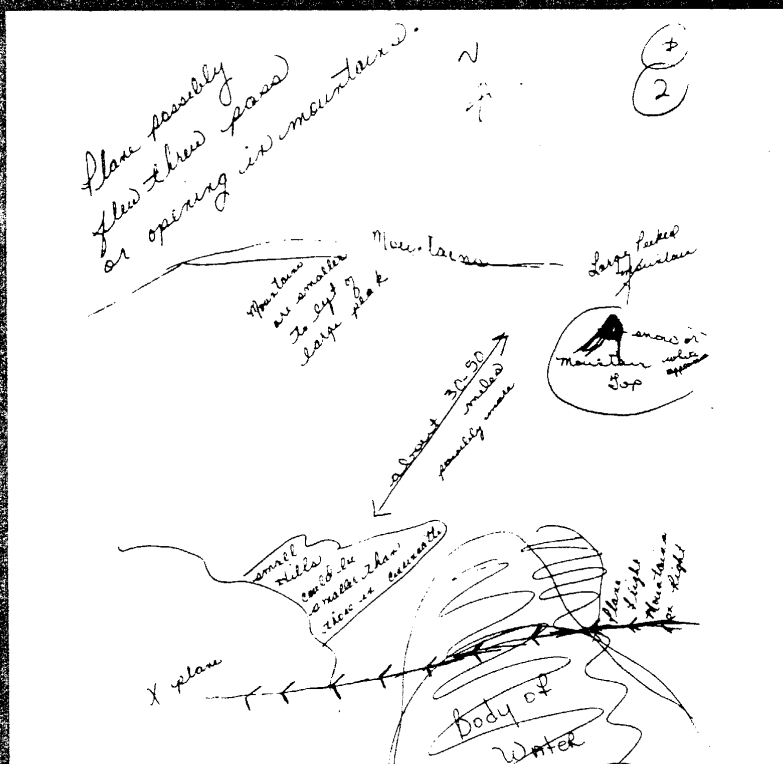


09L3162-1

Approved For Release 2000/08/08 : CIA-RDP96-00789R002100220001-4



VIEWER'S RESPONSE



10L3162-1

SG1B

Approved For Release 2000/08/08 : CIA-RDP96-00789R002100220001-4

Next 9 Page(s) In Document Exempt

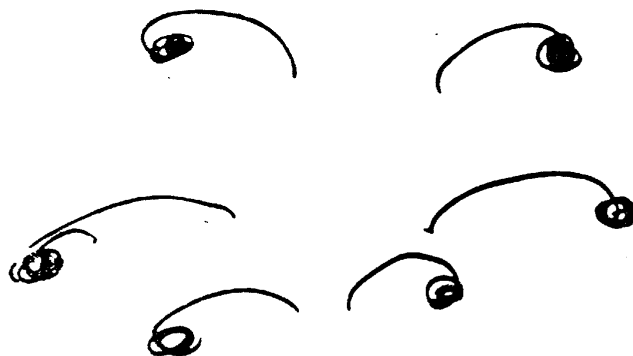
Approved For Release 2000/08/08 : CIA-RDP96-00789R002100220001-4



VIEWER'S RESPONSE

SG1B

Sept 13, 1979



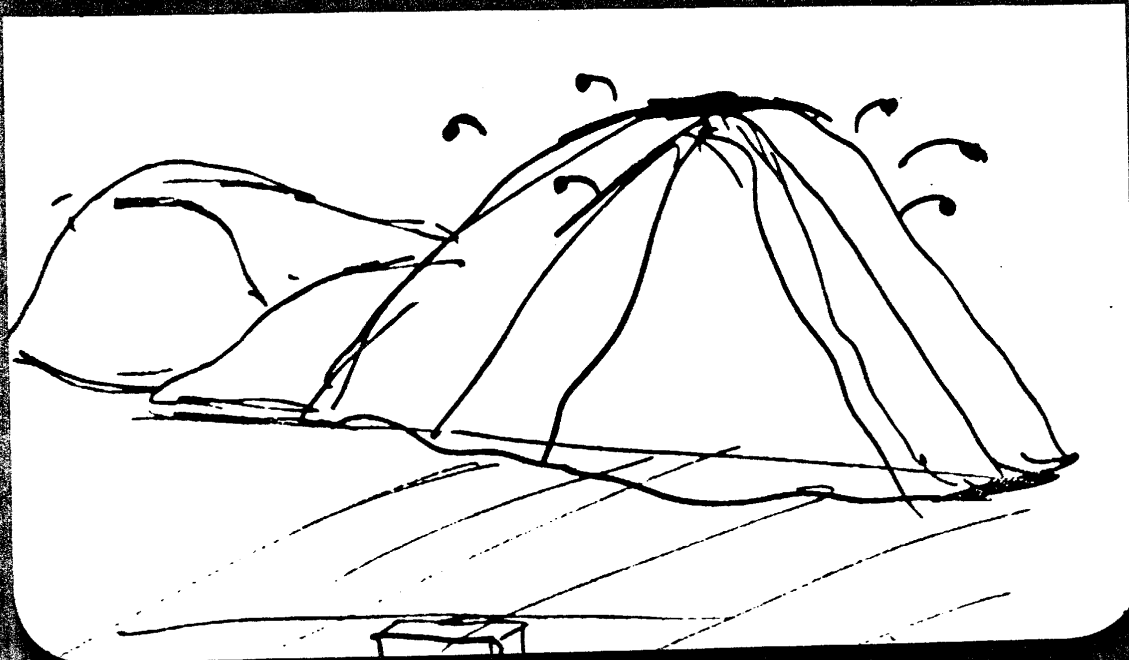
Sparks in the
sky.

18L3162-2

Approved For Release 2000/08/08 : CIA-RDP96-00789R002100220001-4



VIEWER'S RESPONSE



17L3162-2

Approved For Release 2000/08/08 : CIA-RDP96-00789R002100220001-4

SG1B

Approved For Release 2000/08/08 : CIA-RDP96-00789R002100220001-4

Next 4 Page(s) In Document Exempt

Approved For Release 2000/08/08 : CIA-RDP96-00789R002100220001-4

Approved For Release 2000/08/08 : CIA-RDP96-00789R002100220001-4

LEBANON HOSTAGES?

★ BEIRUT

SYRIA

0 20
KILOMETERS

Approved For Release 2000/08/08 : CIA-RDP96-00789R002100220001-4

SECRET



PROJECT REPORTING ON U.S. HOSTAGES SUMMARY

**ADDITIONAL SOURCE OF POSITIVE INFORMATION
STIMULATES ANALYTIC DELIBERATIONS
MAY HELP FOCUS / GUIDE COLLECTION EFFORTS
FORCES REEVALUATION OF EXTANT THEORIES /
METHODOLOGIES
SEVERAL INSTANCES OF STARTLING CORROBORATION
WITH OTHER INTELLIGENCE
IMPRESSIVE, LOGICAL CONSISTENCY
REPORTING ASSESSED AS RELIABLE AND
ACCURATE**

SECRET NOFORN WNINTEL

S4672.17

SG1B

Approved For Release 2000/08/08 : CIA-RDP96-00789R002100220001-4

Next 2 Page(s) In Document Exempt

Approved For Release 2000/08/08 : CIA-RDP96-00789R002100220001-4

SECRET



BASIC TASKING APPROACH

GIVEN:

VESSEL NAME

VESSEL TYPE

LAST KNOWN LOCATION

TASK:

ARE ILLEGAL DRUGS ON-BOARD?

WHEN AND WHERE WILL UNLOADING OCCUR?

ROUTE?

SECRET NOFORN

S4672.12



SECRET

RECOGNITION OF SUPPORT EXTRACTS

TO: DIA
FROM: COMMANDANT
SUBJ: DIA SPECIAL PROJECTS DIVISION SUPPORT

1. (S/NF/LIMDIS) I WOULD LIKE TO COMMEND THE EFFORTS OF YOUR SPECIAL PROJECTS DIVISION FOR THE ENTHUSIASTIC SUPPORT THEY HAVE PROVIDED TO U.S. OPERATIONS. ALTHOUGH THIS SUPPORT WAS EXPERIMENTAL IN NATURE AND CONDUCTED ON A TEST CASE BASIS ONLY, IT TRULY REPRESENTS A UNIQUE AVENUE IN OUR COMMON EFFORT TO COME TO GRIPS WITH THE ACTIVITIES OF MARITIME DRUG SMUGGLERS.

2. (S/NF/LIMDIS) ONE PARTICULARLY NOTEWORTHY CASE WHERE THE INFORMATION OBTAINED THROUGH THE PROGRAM APPEARED TO CORRELATE AND THUS ASSISTED IN OUR INTERDICTION EFFORTS WAS THE SEIZURE OF THE VESSEL WITH APPROXIMATELY 6 TONS OF THAI MARIJUANA BOUND FOR THE U.S. THE SPECIFICS OF THIS CASE AND THE EXACT NATURE OF YOUR ASSISTANCE ARE INCLUDED IN THE ENCLOSURE TO THIS LETTER.

SECRET NOFORN LIMDIS

S4672.09



SECRET

TEST CASE

RECEIVED TASKING ON 16 NOV 1988
RESPONDED 18 NOV 1988

DATA SUMMARY:

DRUGS ARE ON BOARD
SOME IN "CRYSTAL" FORM
IN BOW AREA
WILL UNLOAD AT SEA:
FIRST AREA: 30° N/150° W
SECOND AREA: 38° N/142° W
WILL PROCEED TO U.S. WEST
COAST (CA. AREA)

RECEIVED BY DIA ON 22 NOV 1988

DATA SUMMARY:

LARGE (20 TON) SHIPMENT

WILL RENDEZVOUS AT SEA:
AT 30° N/148° W ON 7 DEC 88
OTHER AREAS LATER
WILL PROCEED TO U.S. WEST
COAST (CA. AREA & N.W. COAST)

SECRET NOFORN LIMDIS

S4672.11

SG1B

Approved For Release 2000/08/08 : CIA-RDP96-00789R002100220001-4

Approved For Release 2000/08/08 : CIA-RDP96-00789R002100220001-4



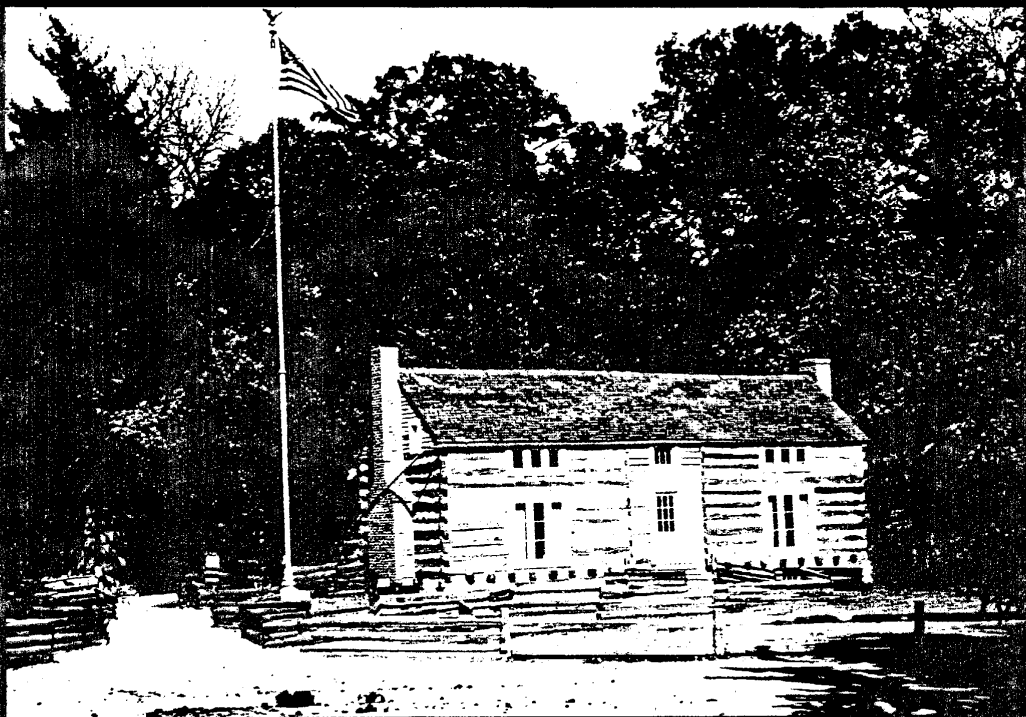
CONFIDENTIAL

DATA SUMMARY

"THE BUILDING 14.8 KM SW OF THE ST. LOUIS ARCH HAS A SOMBER, QUIET, OFFICIAL FEEL. PEOPLE GO TO THIS PLACE WITH A COMMON PURPOSE; TO SEEK KNOWLEDGE. THEY ARE INTERESTED AND CURIOUS ABOUT THE BUILDING AND ITS HISTORY. THE HISTORY OF THIS BUILDING DEALS WITH OLD COLONIAL AMERICA. THE BUILDING IS LOCATED ON FLAT LAND, LIKE A FARM AND HAS SOMETHING TO DO WITH A MAN. THIS MAN (DEAD NOW) WORE A UNIFORM AND WAS A HISTORICAL MILITARY LEADER. THIS BUILDING WAS THIS MAN'S HOME. THIS MAN WAS A LEADER AND WAS APPROXIMATELY 5'10" TALL, HAD BLACK HAIR AND A BEARD, WAS HEAVYSET AND STONEFACED. IN THINKING ABOUT THE ABOVE INFORMATION I SEE A PICTURE IN MY MIND OF U.S. GRANT."

CONFIDENTIAL

C4672.07



THE FOLLOWING DESCRIPTION APPEARS ON THE REVERSE SIDE OF THE ABOVE POSTCARD

GRANT'S FARM

RESTORED CABIN, BUILT BY 18TH PRESIDENT, GENERAL ULYSSES S. GRANT ON LAND HE ONCE OWNED. A TRACKLESS TRAIN TOUR THROUGH AREAS FREELY ROAMED BY DEER, ELK, BISON AND OTHER WILD ANIMALS. THERE ARE ALSO A MINIATURE ZOO, BIRD AND ELEPHANT SHOW PLUS MORE. ADMISSION IS FREE, HOWEVER ADVANCE RESERVATIONS ARE REQUIRED. ANHEUSER BUSCH OPERATES AND MAINTAINS GRANT'S FARM. 10501 GRAVIO ROAD, ST. LOUIS, MISSOURI 63123.



SECRET

SIGNAL TO NOISE CHARACTERISTICS

NOISE SOURCES

ANALYTICAL OVERLAY

ASSOCIATIONAL OVERLAY

MONITOR OVERLAY

ENVIRONMENTAL OVERLAY

SECRET

S3162.04



SECRET

SEQUENCE OF TARGET ACQUISITION

RECOGNITION AND DECODING OF GESTALTS
ACHIEVING SENSORY CONTACT WITH TARGET
EXPERIENCING MOTION/MOBILITY WITHIN
TARGET

RECOGNITION AND DECODING OF MINOR SIGNALS
WHILE SUSTAINING MAJOR GESTALTS

DECODING SPECIAL CHARACTERISTICS OF TARGET
ANALYTICAL RECOGNITION AND DECODING OF
SIGNIFICANT ASPECTS OF THE TARGET

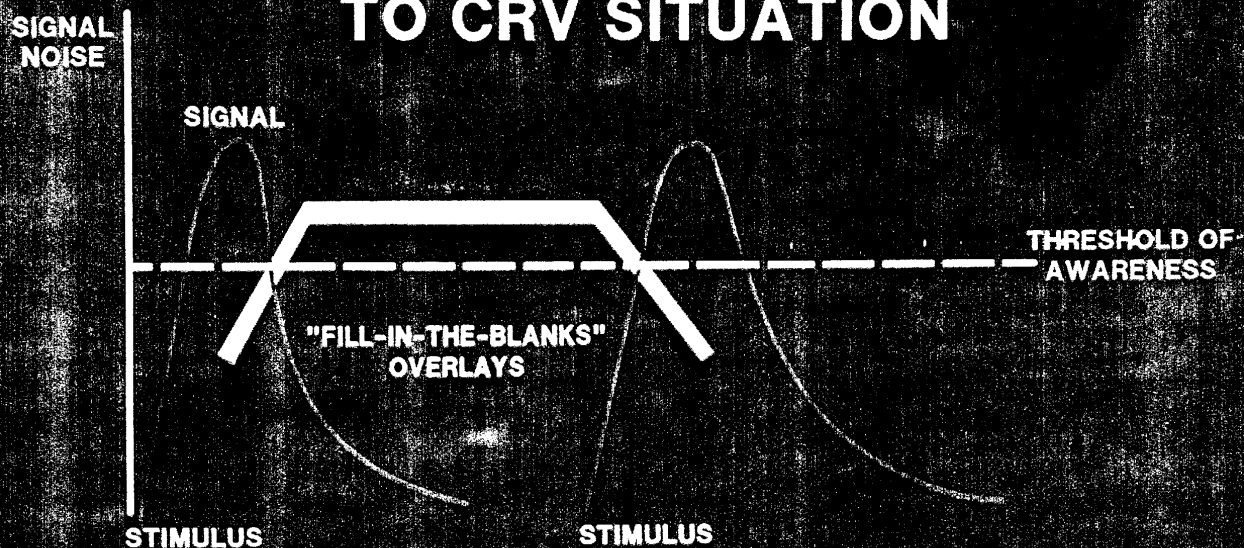
SECRET NOFORN

S3162.10



SECRET

SCHEMATIC REPRESENTATION OF REMOTE VIEWER RESPONSE TO CRV SITUATION



SECRET

S3182.14



SECRET

FURTHER DEVELOPMENT REQUIRED

- **HIGHER RESOLUTION DATA**
- **PRECISE SEARCH LOCATIONS**
- **SPECIFIC EVENT PREDICTION**
- **BREAK CODES**

**SPECIAL ACCESS REQUIRED
SECRET**

S3162.16



SECRET

GOAL:

ESTABLISH REMOTE VIEWING AS A RELIABLE INTELLIGENCE TOOL

SPECIAL ACCESS REQUIRED
SECRET

53162'15