

**SECRET**

DATA SUMMARIES

(S/NF/SG/LIMDIS) Following are the perceived highlights from each source.

- (S/NF/SG/WN/LIMDIS) Source A:

SG1A -- [REDACTED] is a healthy man in his thirties who is fair, blue eyed and of English descent. He is associated with military bases. He works for a large bureaucratic organization in a large building work environment with windows. He has been associated with imagery to include satellites (computerized screens), industry, and was possibly around ships or planes in his past. He also has been exposed to energy or electrical systems. This individual writes reports and may deal with types of contracting. He has had a military career. He wants to be on his own now working for another organization and he has a personal relationship. His activities this year include the issue or new work or new employment. He has experienced some difficulty with the people he works with. He will be leaving because he wishes to change organizations. He may be interested in overseas work. In June, May-August, of 1994 he will transition away from military related work. He is waiting for this new job.

SG1A -- [REDACTED] prefers to be alone, but is always surrounded by people and has a majestic outlook or is a majestic thinker. He may have trouble with internal revenue and is not a good person for management. He is personable, a listener, and is reliable with a rustic manner. He may be one to command rank from his peers, but does not receive it because he is essentially in what he feels to be an unimportant or low position.

- (S/NF/SG/WN/LIMDIS) Source B:

-- The target individual is middle aged, has pudgy cheeks and a pot marked complexion, wears glasses, is over weight (has a round body shape) and deals with electronically related stuff. He is preoccupied with the concept of a "flip chart"(?).

**REPRODUCTION REQUIRES  
APPROVAL OF ORIGINATOR  
OR HIGHER DOD AUTHORITY**

**WARNING NOTICE-INTELLIGENCE  
SOURCES OR METHODS INVOLVED**

**FURTHER DISSEMINATION  
ONLY AS DIRECTED BY DIA/PAG  
OR HIGHER DOD AUTHORITY**

**CLASSIFIED BY MULTIPLE SOURCES  
DECLASSIFY ON OADR**

1

**SECRET**

**NOT RELEASABLE TO FOREIGN NATIONALS**

SECRET

-- He is a womanizer, frequents "girly" shows/institutions, is a control freak and a real pig (i.e. slime ball). The concepts of unsavory and unrepentant are associated with this individual.

-- His activities will involve watching a portion of a river-like body of water and the traffic moving upon it. It will be a location where steps lead from a higher level downward along a stone block wall to just above the water surface (Attachment A). The water here is dark gray/green and feels really dirty. The surface appears lumpy and stringy at times.

-- There is a "V"-shaped trough or canal within this vicinity. It is steep, the sides are hard like cement, slippery and gooey, it smells stagnant here and the "exit" appears to be suspended several feet above a lower level. There are the concepts of underground and emerging associated with this feature.

-- The target's intentions are associated with the following concepts: projectiles/missiles/rocket; a glowing substance shooting out of a pointed object; a fast, linear movement; slowing rotating motion; direction; and sensing.

-- The term "Binder Cap" is also associated with what this individual is up to.

--All of the sketches relate to what the target is involved with (Attachments B-E). It feels as if he is involved with a connection with a Middle Eastern regime; one that does not feel too friendly.

-- Other unidentified or seemingly disassociated concepts, figures, etc. are:

--- a series of "V"-shaped angles superimposed upon one another.

--- a spinning motions which feel to simultaneously spin in both a vertical and horizontal direction.

--- something or someone being "out-of-place".

--- structures reminiscent of stone-lined tunnels or sewers.

2

SECRET

NOT RELEASABLE TO FOREIGN NATIONALS

STAR GATE

WNINTEL

LIMDIS

**SECRET**

- a cross-shaped object which sits atop a tall pole.
- computers.
- "super gun" (?).
- "sighting" apparatus.
- inverted cones.
- tracking.
- projectiles.
- electric motor armature.

- (S/NF/SG/WN/LIMDIS) Source C:

-- The target is a male individual as stated in the tasking dated 7 April 94. One can easily assume that the individual is oriental/American based on his name.

-- The individual is middle-aged and looks younger than his age. The individual is light-skinned and has light brown to blondish hair. The individual dresses casual and is quiet. At times he seems vague. He can be friendly. He is considered intelligence and has a technical background.

-- The individual has had training and jobs with classified material and he may have a SIGINT background because radar was associated with him. The individual was perceived reading documents that were not written in English. The individual works at night.

-- The individual is a loner. He spends a lot of time by himself. He may not currently be married.

-- The individual will travel a lot by plane this year.

**SECRET**

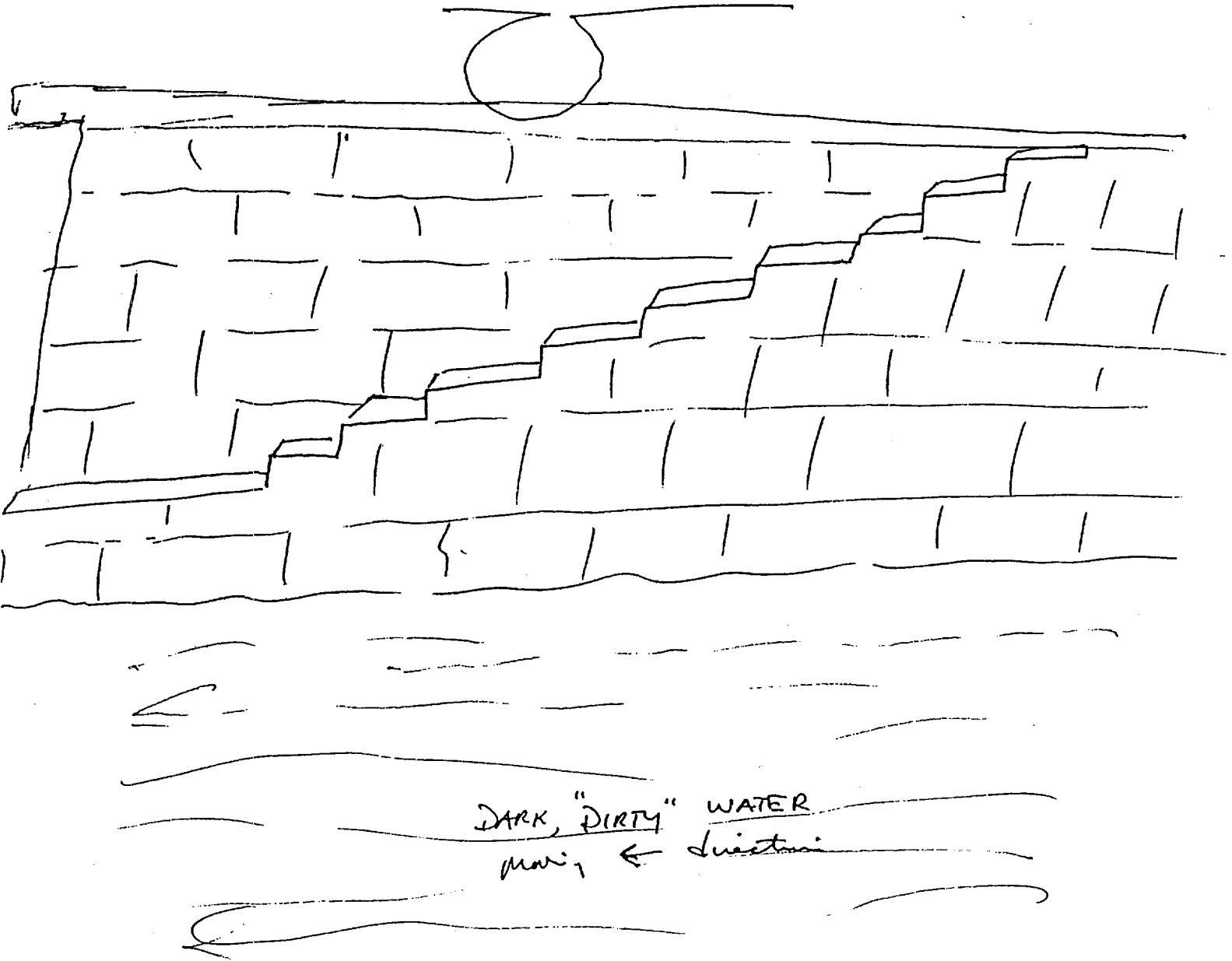
**NOT RELEASABLE TO FOREIGN NATIONALS**

**STAR GATE**

**WNINTEL**

**LIMDIS**

**SECRET**

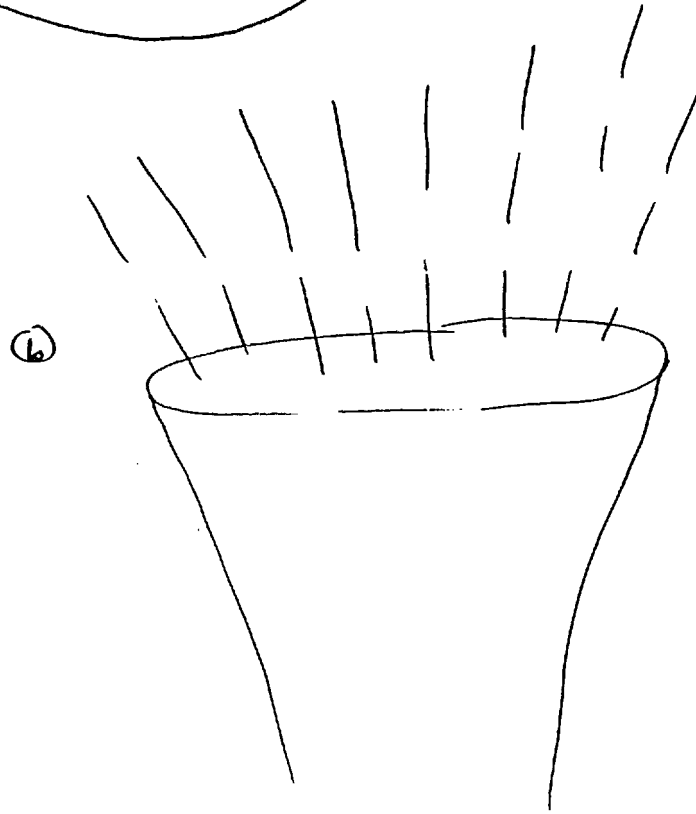
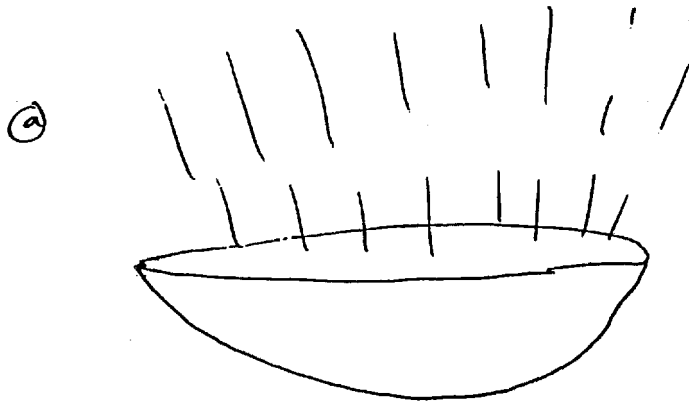


**SECRET  
NOFORN  
STAR GATE**

**ATTACHMENT A**

**SECRET**

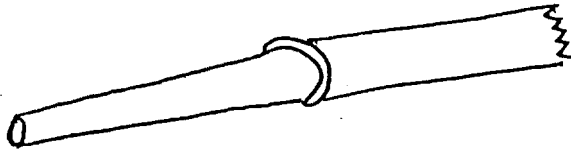
*Unidentified figures / concepts*



**SECRET  
NOFORN  
STAR GATE  
LIMDS**

~~SECRET~~

(b)



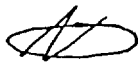
"concept of  
- Binder cap"

(c)

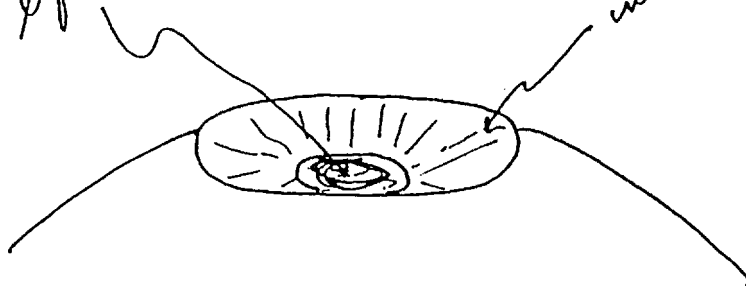


(d)

liquid material



inverted "cone" shape

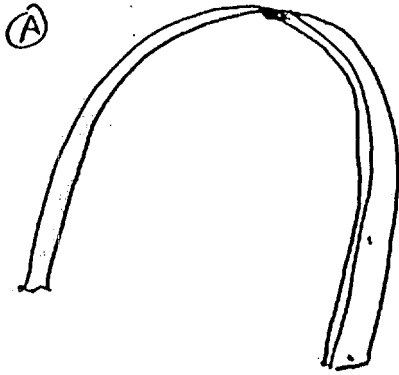


SECRET

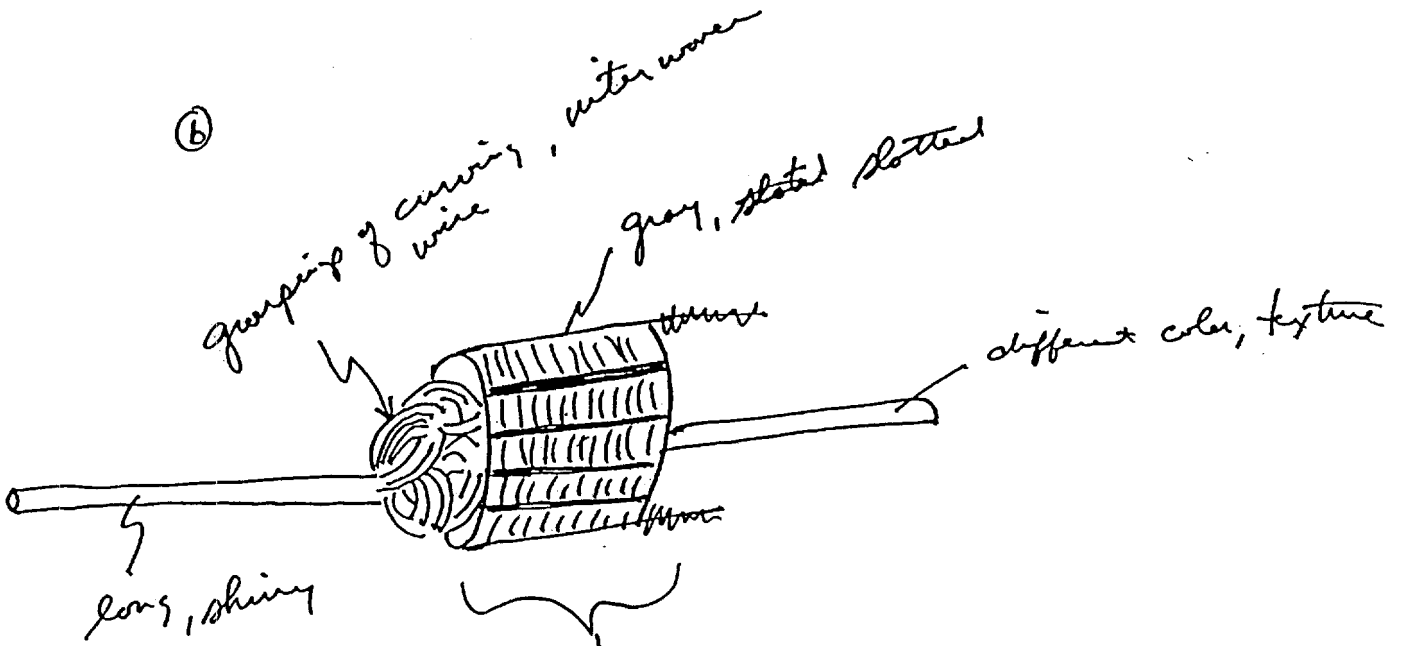
NOFORN  
STAR GATE

LIMIDS

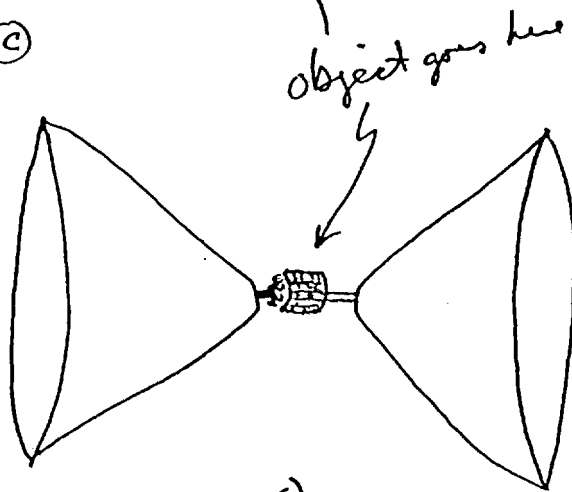
**SECRET**



ⓐ



ⓒ

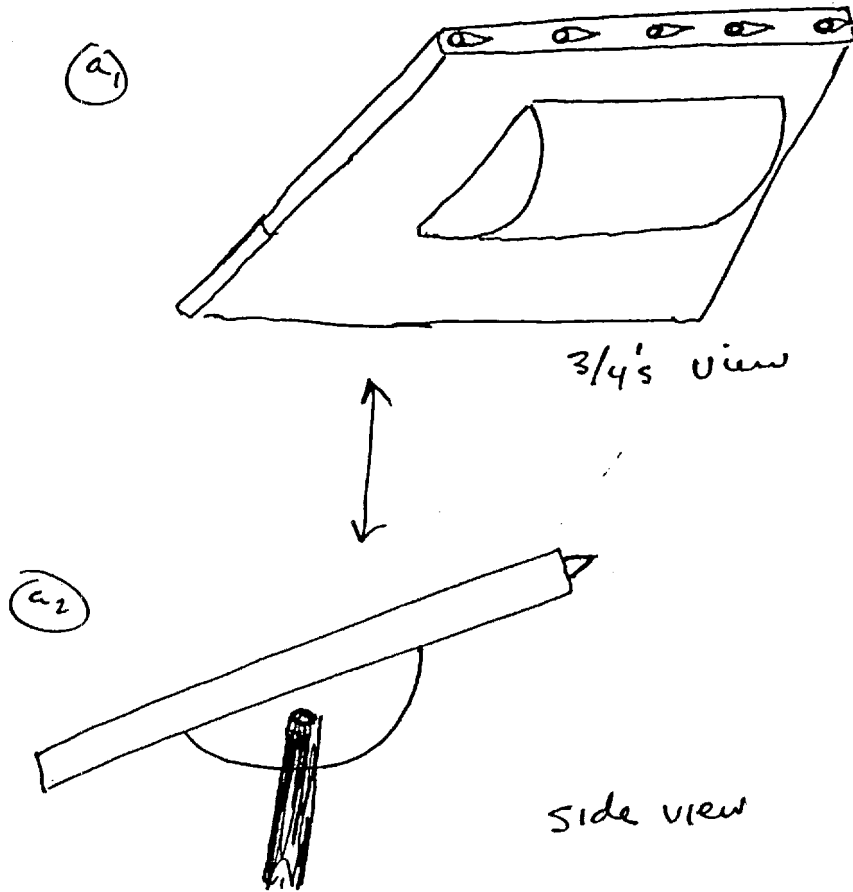


- concept of inverted cones

**SECRET  
NOFORN**

**STAR GATE  
LIMDS**

**SECRET**



**SECRET**  
**NOFORN**  
**STAR GATE**  
**LIMIDS**



SECRET

PROJECT EVALUATION FEEDBACK

PROJECT NO. \_\_\_\_\_  
 DATE OF PROJECT \_\_\_\_\_

SG1J

The following is an evaluation form for the project you reviewed. Please complete this form and return to [REDACTED] Chief, Technology Assessments and Support Activity.

A. Is the information accurate? (Circle response)

<u>Categories</u>	Source <u>A</u>	Source <u>B</u>	Source <u>C</u>
Yes (true)	(1)	(1)	(1)
May be true	(2)	(2)	(2)
Possibly true	(3)	(3)	(3)
No	(4)	(4)	(4)
Possibly not true	(5)	(5)	(5)
Unsure	(6)	(6)	(6)

B. What is value of the Source(s)' information? (Circle response)

Major significance	(1)	(1)	(1)
High value	(2)	(2)	(2)
Of value	(3)	(3)	(3)
Low value	(4)	(4)	(4)
No value	(5)	(5)	(5)

UNCLASSIFIED WHEN BLANK

SECRET

NOT RELEASABLE TO FOREIGN NATIONALS

LIMITED DISSEMINATION

STAR GATE

