

SESSION INFORMATION

- A. TARGET DATA:
 Task/Target No. : 93-204-P
 Session No. : 01 & 02
- B. PERSONNEL DATA:
 Source No. : 049
 Monitor's No. : N/A
 Beacon/Sender No. : N/A
- C. SESSION DATA:
 Date Task Received : 15 SEP 93
 Session Date : 17 & 20 SEP 93
 Start Time : 1110
 Stop Time : 1210
 Method Used : CRV
 Aids/Distractions (PIs) : Preoccupied with move.
 Pre-session Hunches (AVs) : None
 Date Summary Returned : 21 SEP 93
- D. EVALUATION DATA:
 Viewer's Estimate :
 Evaluator's Estimate :
- E. SESSION SUMMARY:

The target is currently associated with a location which is WSW of the city of Mogadishu. The following attributes are associated with this location:

- a flat, dusty area bordered by a curved wall along one edge and a straight wall along another edge (see diagram 1). These two walls intersect. There is an object reminiscent of a tower which sits within the level area.

- the "tower" object (see diagram 2a) has a large, cylindrically shaped tank-like feature on top. There is a wooden plank platform which sits a short distance below the tank.

- this location is associated with water. There is also a strong odor which smells like dried fish.

- there is a structure which occurs nearby and on the same side of the street/road of the wall-tower feature mentioned above. This structure gives strong impressions of having had two functions: "a hanger converted into a warehouse" or "a warehouse which has been converted into a hanger".

- a twin engined aircraft is stored within this structure (see diagram 2b). It has been "civilianized"; that is, a military aircraft converted into a civilian aircraft. It has what seems to be overly large engines about mid-wing. The wings appear to go

through the middle of the engines.

The mode of travel by which the target is moving is via an open bed truck which is used to transport large, flat pieces of rock or stone (see diagram page 3). This truck has the following associated with it:

- there is a hidden compartment hidden in the bed. It is camouflaged by the large flat rocks which the truck routinely transports. This compartment is being used to hide "combat" related objects: hard, metal tubes and large amounts of similarly shaped objects reminiscent of large ammo or projectiles.

- this truck has a second distinctive feature: a green metal/wood tool or storage box which sits at the front of the cargo bed section.

- this truck is bringing these large, flat pieces of rock or stone into the city of Mogadishu. The origin of this rock is close to the mountainous area. The rock is taken from the side of the foothills rather than "up" from the ground.

- one can see this area (reminiscent of a quarry) with binoculars from Mogadishu.

- there is a "stop" between the location where the rock is taken from the earth and Mogadishu where weapons/ammo are placed in the compartment.

- the wall-tower location, the structure containing the aircraft and the weapon/ammo "loading" point are all within the same vicinity of each other.

The target is protected...more like "warned" or alerted to patrols in his general vicinity by (Viewer's Note: I'm almost embarrassed to mention this, but...) a flock of goats!!! The warning signal is the presence of a single black goat within a group or flock of white goats. I know...I know...

Additional, seemingly unrelated, objects are depicted on page 4 diagrams. No relationship with the aforementioned could be ascertained during the operation.

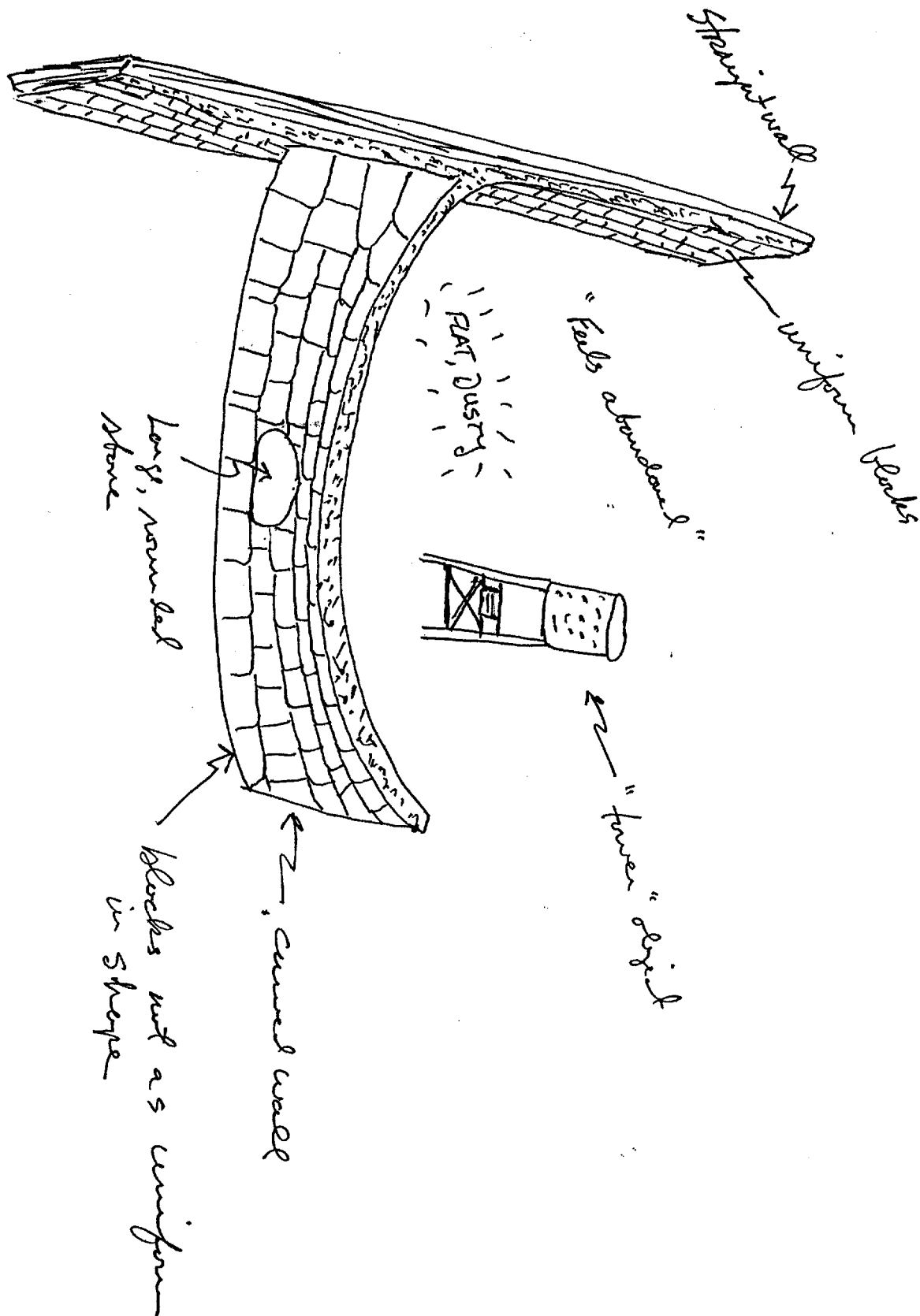
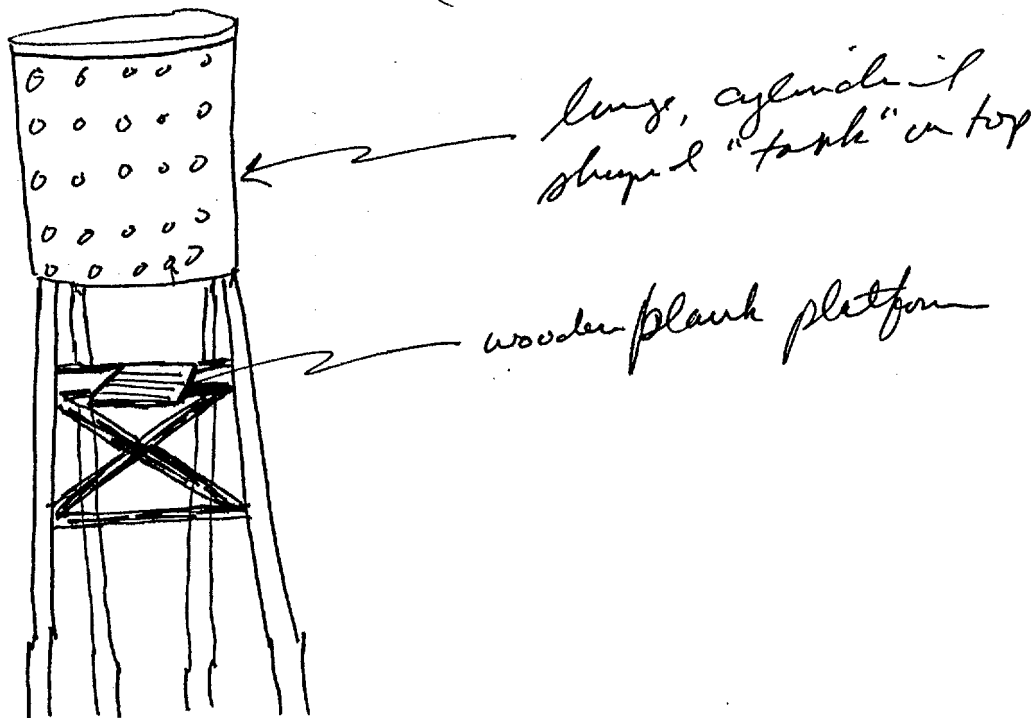


Diagram 1

(a)



(b)

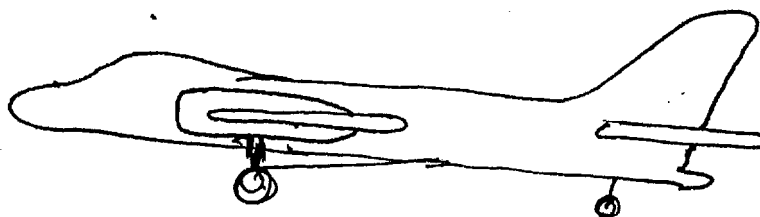
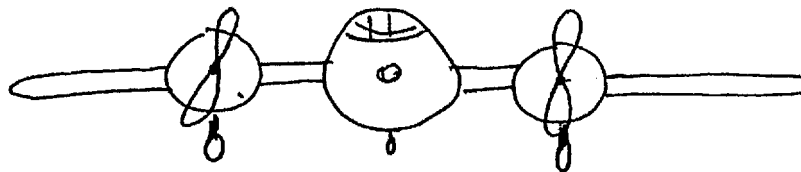
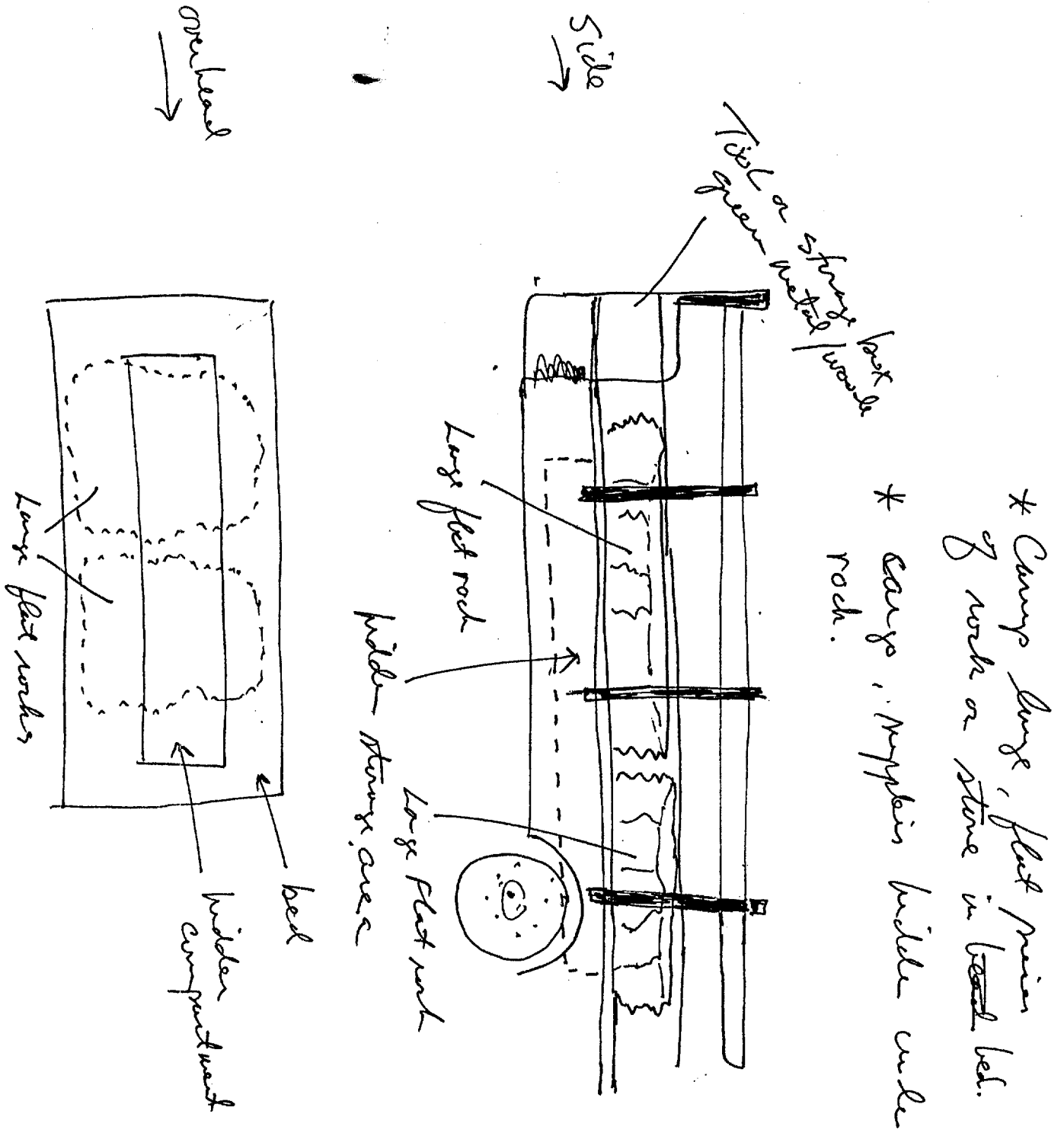
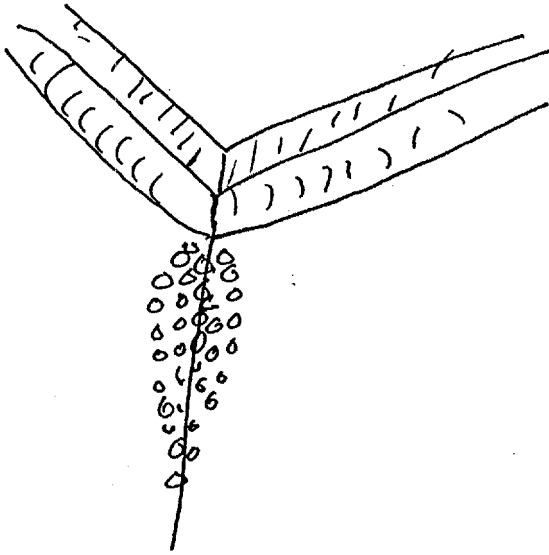


Diagram 2a-2b



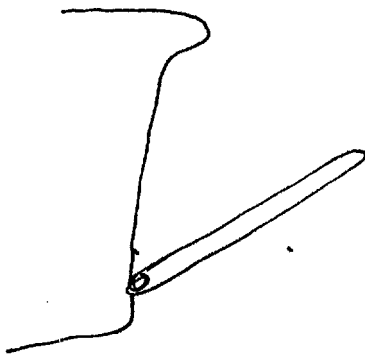
* Camp large, flat pieces of rock or stone in ~~bed~~ bed.
 * large, irregular hidden under rock.

Diagram 3

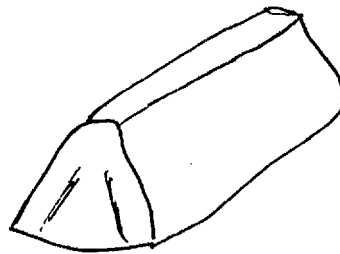


~~As~~ A/S
Looks like
bunches of grapes
hanging from eaves.

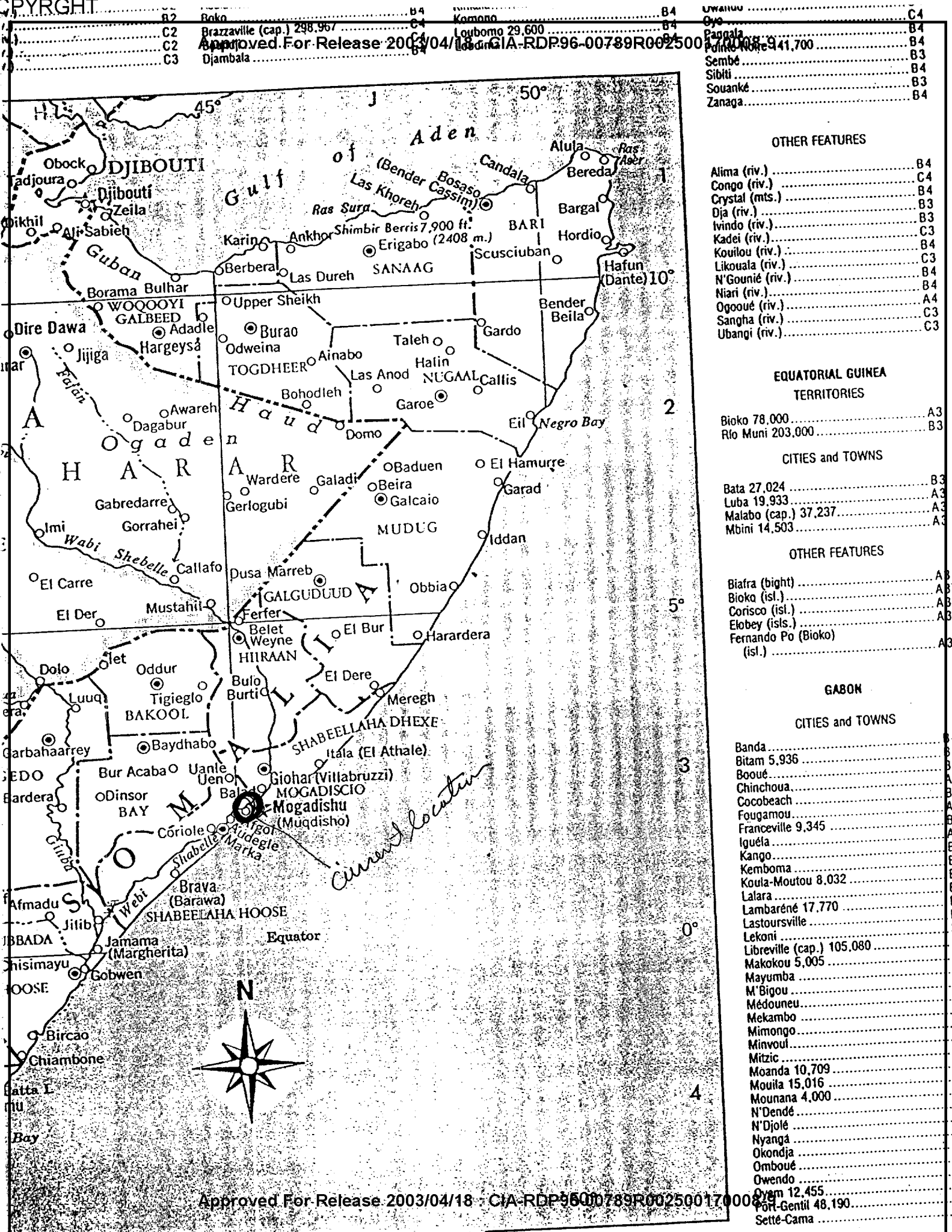
Plate glass in wrapping



Metal door opening &
closes



Brushed metal
appearance



B2	Bako	B4
C2	Brazzaville (cap.) 298,967	C4
C2	Approved For Release 2003/04/18 : CIA-RDP96-00789R002500170008-9	B4
C3	Djambala	B4

B4	Komono	B4
B4	Louhomo 29,600	B4
B4	Approved For Release 2003/04/18 : CIA-RDP96-00789R002500170008-9	B4

B4	Uwainu	C4
B4	Oyo	B4
B4	Pangala	B4
B4	Pulmankere 941,700	B4
B3	Sembé	B3
B4	Sibiti	B4
B3	Souanké	B3
B4	Zanaga	B4

OTHER FEATURES

B4	Alima (riv.)	B4
C4	Congo (riv.)	C4
B4	Crystal (mts.)	B4
B3	Dja (riv.)	B3
B3	Ivindo (riv.)	B3
C3	Kadei (riv.)	C3
B4	Kouilou (riv.)	B4
C3	Likouala (riv.)	C3
B4	N'Gounié (riv.)	B4
B4	Niari (riv.)	B4
A4	Ogooué (riv.)	A4
C3	Sangha (riv.)	C3
C3	Ubangi (riv.)	C3

EQUATORIAL GUINEA TERRITORIES

A3	Bioko 78,000	A3
B3	Rto Muni 203,000	B3

CITIES and TOWNS

B3	Bata 27,024	B3
A3	Luba 19,933	A3
A3	Malabo (cap.) 37,237	A3
A3	Mbini 14,503	A3

OTHER FEATURES

A3	Biafra (bight)	A3
A3	Bioko (isl.)	A3
A3	Corisco (isl.)	A3
A3	Elobey (isls.)	A3
A3	Fernando Po (Bioko) (isl.)	A3

GABON

CITIES and TOWNS

B4	Banda	B4
B3	Bitam 5,936	B3
B3	Booué	B3
A4	Chinchoua	A4
B3	Cocobeach	B3
B4	Fougamou	B4
B4	Franceville 9,345	B4
A4	Iguéla	A4
B3	Kango	B3
B3	Kemboma	B3
B4	Koula-Moutou 8,032	B4
B3	Lalara	B3
B4	Lambaréné 17,770	B4
B3	Lastoursville	B3
B3	Lekoni	B3
A4	Libreville (cap.) 105,080	A4
B3	Makokou 5,005	B3
A4	Mayumba	A4
B3	M'Bigou	B3
B3	Médouneu	B3
B3	Mekambo	B3
B3	Mimongo	B3
E3	Minvoul	E3
E3	Mitzié	E3
E3	Moanda 10,709	E3
E3	Mouila 15,016	E3
E3	Mounana 4,000	E3
E3	N'Dendé	E3
E3	N'Djolé	E3
E3	Nyangá	E3
E3	Okondja	E3
E3	Omboué	E3
E3	Owendo	E3
E3	Oyam 12,455	E3
E3	Port-Gentil 48,190	E3
E3	Setté-Cama	E3

TASKING SHEET

SOURCE NO: 049

DATE: 15 Sept 93

SUSPENSE: 16 Sept 93

1200 Hrs

1. PROJECT NUMBER: 93-204-P

2. METHOD/TECHNIQUE: Method of Choice

3. BACKGROUND: This tasker is a follow-on to the special project of 1 & 2 September 93.

4. ESSENTIAL ELEMENTS OF INFORMATION: _____

--	
--	
--	
--	
--	
--	
--	
--	
--	
--	

SG1A

5. COMMENTS: Coordinates: 114251/503142