

~~SECRET~~

DATA SUMMARIES

(S/NF/SG/LIMDIS) Following are perceived highlights from each source. The period covered is 5-6 October 1993.

- (S/NF/SG/LIMDIS) Source (Green Data):

-- There are at least five, possibly seven men being held prisoner. A Christian man is present. The prisoners are depressed and under nourished and no-one as of yet has been killed. They are being held captive in a walled area complex in downtown Mogadishu. The prisoners are located in the underground level of a two story building in a dungeon area downstairs in the back quarters. It is one of the minor buildings with a taller building nearby. The soldiers are being deprived of healing and future hope. The building's surroundings include: a rounded area out back, sand, and guards in the vicinity. Figuratively speaking, there is not flowing water nearby like a body of water (such as the sea), but water and a water tower can be found near the complex.

-- It was perceived that the prisoners are being held at Building 52, the Ministry of Foreign Affairs, which is located near the Water Development Agency, a prison and hospital.

-- The dead bodies of American soldiers have been moved in a northern direction from the compound where they were before and are placed on top of one another.

- (S/NF/SG/LIMDIS) Source (Red Data):

-- The American soldiers were moved around quickly after they were captured. The American soldiers were brought to areas that were close to military offices and the Military Academy. They were also moved in and out of an Army Hospital and an Army camp. (Please see map for areas).

REPRODUCTION REQUIRES
APPROVAL OF ORIGINATOR
OR HIGHER DOD AUTHORITY

FURTHER DISSEMINATION
ONLY AS DIRECTED BY DIA/PAG
OR HIGHER DOD AUTHORITY

CLASSIFIED BY MULTIPLE SOURCES
DECLASSIFY ON OADR

1

~~SECRET~~

NOT RELEASABLE TO FOREIGN NATIONALS
STAR CLTE

~~SECRET~~

-- The plans and intentions are to move the American soldiers away from the Mogadishu area into the northern area of the country as fast as possible. This is so that U.S. forces cannot find them. The plan is to transport the prisoners to an area known as Karin and Dire Dawa.

-- The prisoners will not be kept together. They will be scattered. The prisoners will be kept in cave like dwellings and will be moved every several days. They will not be kept in the same area of confinement. This is so that they will not be found.

-- The prisoners are scared. They are given water but very minimum to eat. The prisoners will have a safe return before Christmas. The prisoners are not perceived as having major health problems.

-- The bodies of the dead U.S. soldiers are desecrated. They are not being stored in any one place.

- (S/NF/SG/LIMDIS) Source (Black Data):

-- Five American soldiers are currently being held in the building so located on the map and sketched in the accompanying diagrams.

-- The Americans are located on an upper floor of the building in a series of three rooms. This building (or one close by) is associated with grinding and there is a strong, sweet smell reminiscent of fruit. It has a plain, stucco front with prominent dark colored timbers or wooden beams.

-- There is the concept that the vicinity of this building is "a city within a city". There is a nearby building which has a "museum" perception about it. There are a number of cultural items i.e. artifacts and this building has complex designs on the walls.

-- The Americans have been moved around in large, cargo-type trucks. There is an overwhelming expression of torture, mistreatment and injuries that are very apparent. It is perceived that one has recently died and is covered with a heavy, off-white cloth. There is a large box/chest type object near this individual. It is perceived as if this individual is not with the others.

~~SECRET~~

NOT RELEASABLE TO FOREIGN NATIONALS
STAR CATE

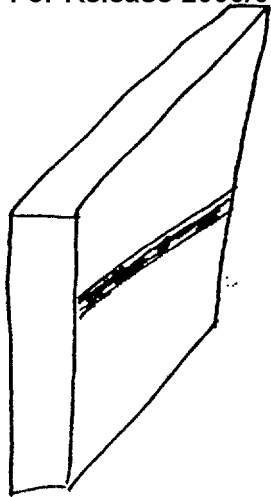
~~SECRET~~

-- There is a small faction within the hierarchy which wants to lead the Americans to safety. Two of these individuals are involved with guarding the Americans in the building.

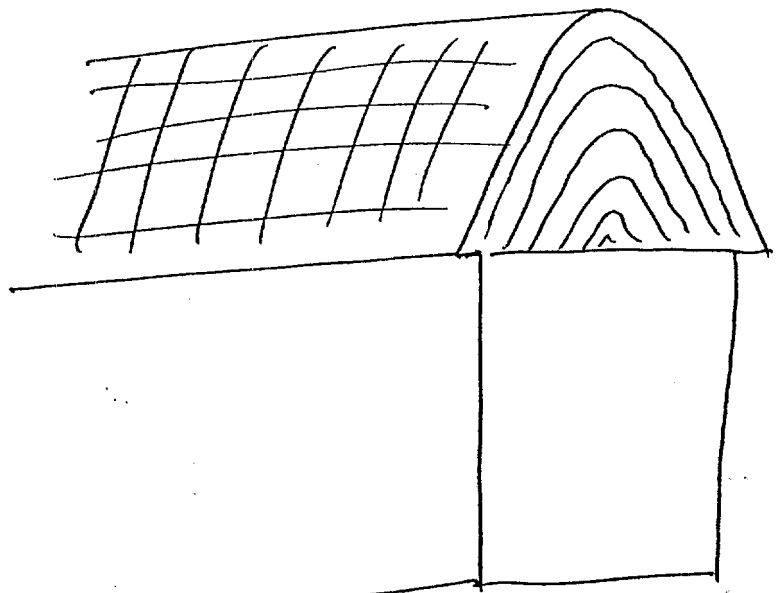
~~SECRET~~

NOT RELEASABLE TO FOREIGN NATIONALS
STAR CITE

- UNIDENTIFIED FEATURES -

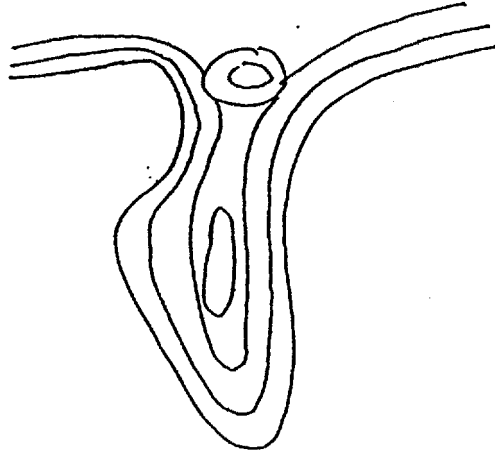


WPECKage



Enclosure 3a

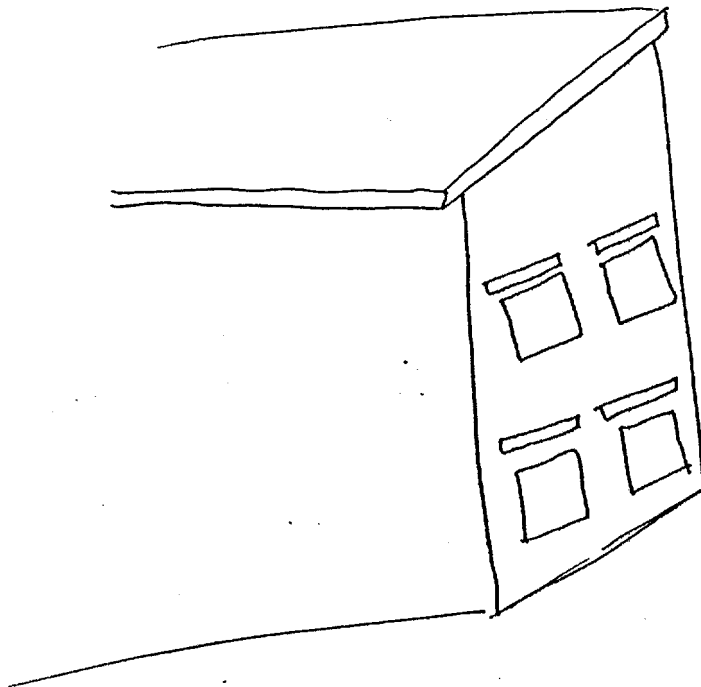
d



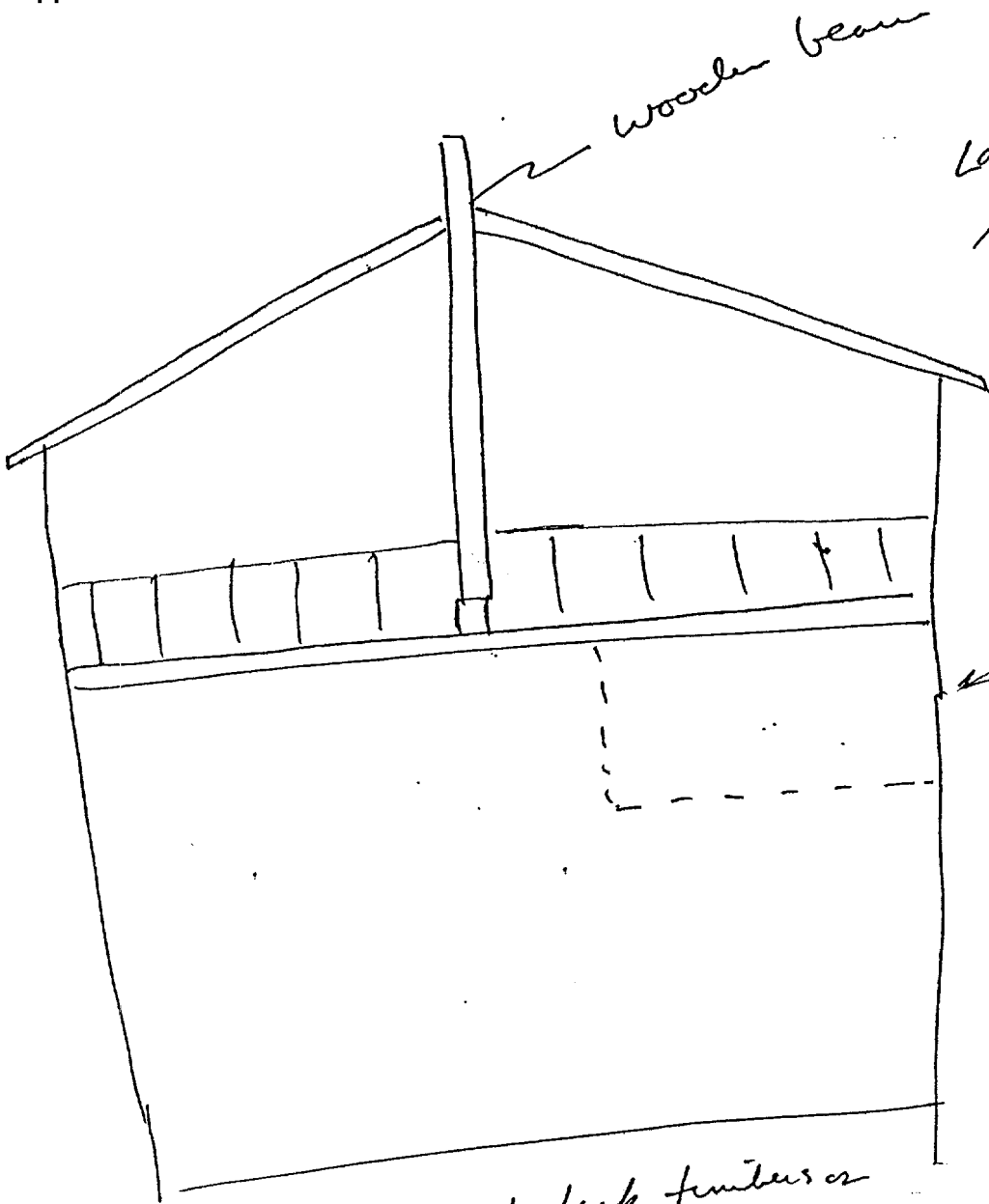
Contour lines

curved surface

roof top



*upper story
wooden floor
couch or bed*



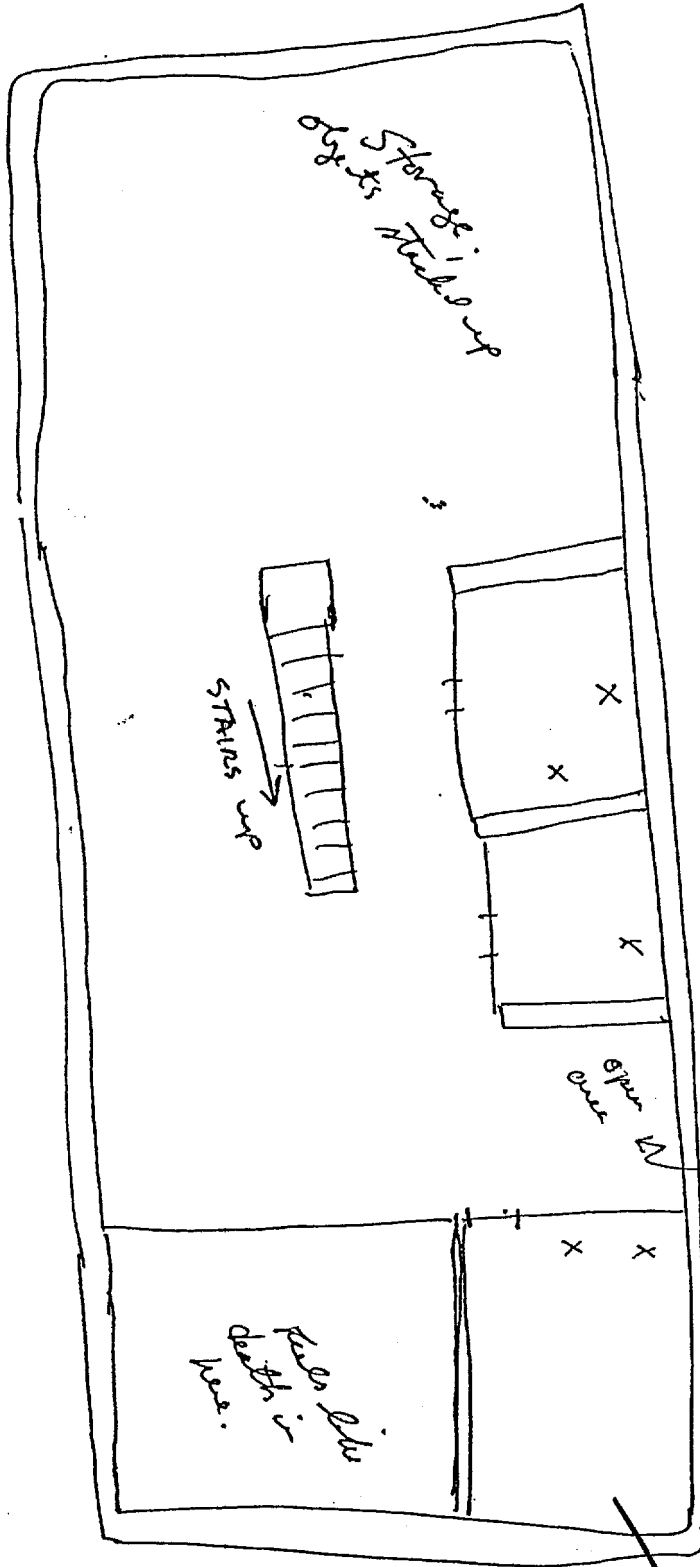
Large bldg;
storage, com-
munication

upper story
room
(see next page)

Plain bldg w/ dark timber or
beams.

- torched
- mis treated
- unusable
- moved about in
trucks

X = Location of American soldiers/parts



Slits on floor

part part

