

SESSION INFORMATION

A. TARGET DATA:

Task/Target No. : 93-218-P
Session No. : 01

B. PERSONNEL DATA:

Source No. : 049
Monitor's No. : NA
Beacon/Sender No. : NA

C. SESSION DATA:

Date Task Received : 19 NOV 93
Session Date : 19 NOV 93
Start Time : 1043
Stop Time : 1120
Method Used : CRV
Distractions (PIs) : Tired
Pre-session Hunches (AVs) : Large, angular shapes (see sketch)
Date Summary Returned : 19 NOV 93

D. EVALUATION DATA:

Viewer's Estimate :
Evaluator's Estimate :

E. SESSION SUMMARY:

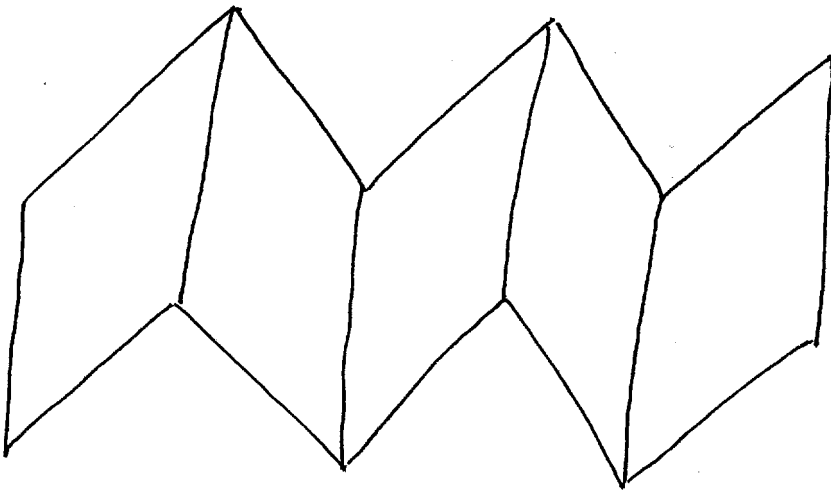
The target contains the perception of a rapid, downward and directed movement of water over a series of angularly shaped features (see sketch on page 4). There is a sense that the water "separates from itself" and then "rejoins itself" (reminiscent of water running through a series of ponds/pools or through a grist mill). There is an area where the water is very smooth and almost glass-like in appearance. It is circular in appearance and feels like a pond or pool.

There is a high feature or structure which is of concrete construction. This is associated with electricity or electrical equipment.

There is also a structure which consists of a series of adjacent, similarly shaped features which occurs within the vicinity of the aforementioned. This structure or feature is a conglomerate of shapes and lines (to include curved or angled tubes or pipes) and is also somehow associated with electrical equipment.

There is a sense of "forward" movement; that is, a concept of "pushing ahead" i.e. like parting something to get through it. There is also the concept of large, door-like features which swing open and close. The concepts of "covers" and "lights" are also associated with the target.

Other features associated with this target are depicted and explained on pages 1 and 2 of the sketches.



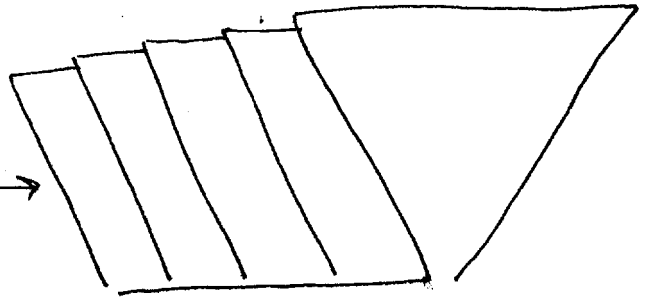
Advanced
Visual
←

6
6

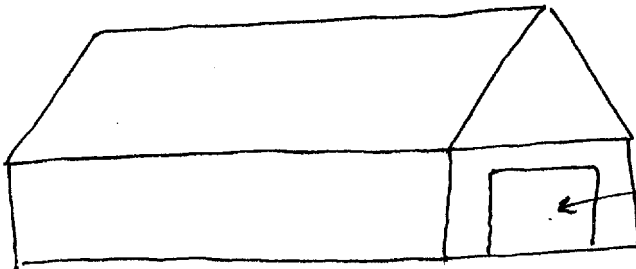


← trough like object

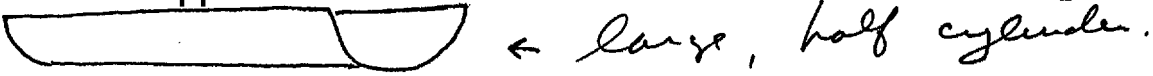
Series of adjacent,
similarly shaped
features →



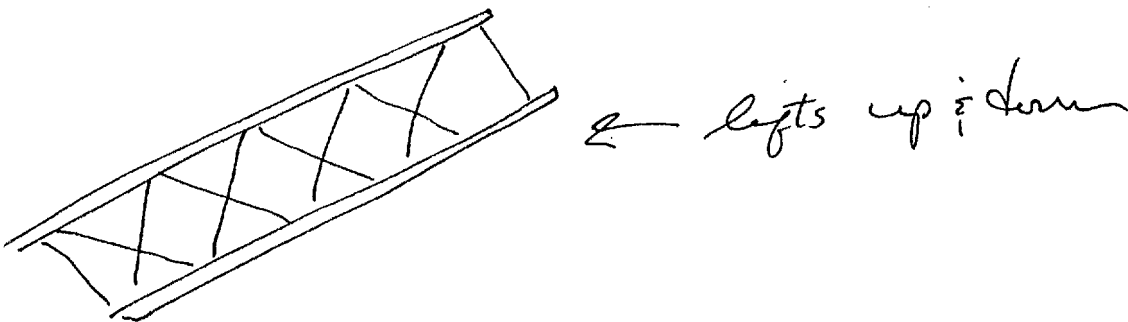
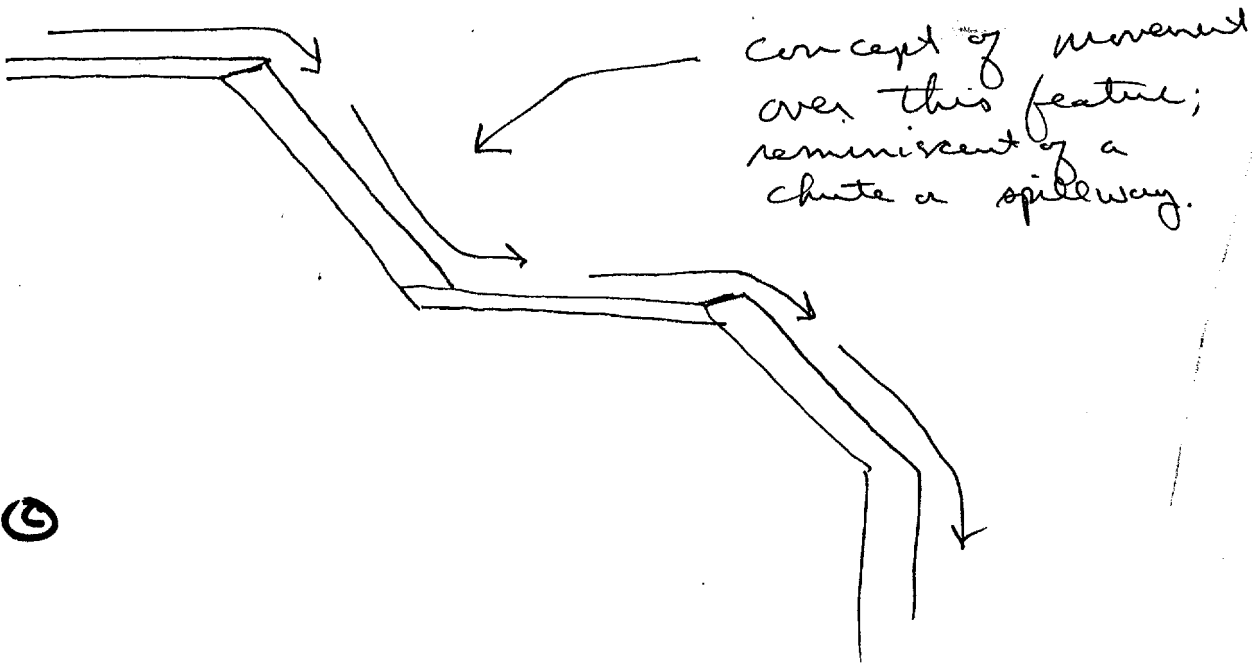
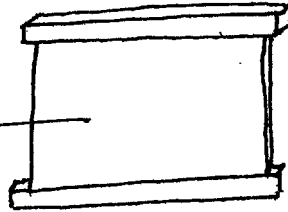
6
6

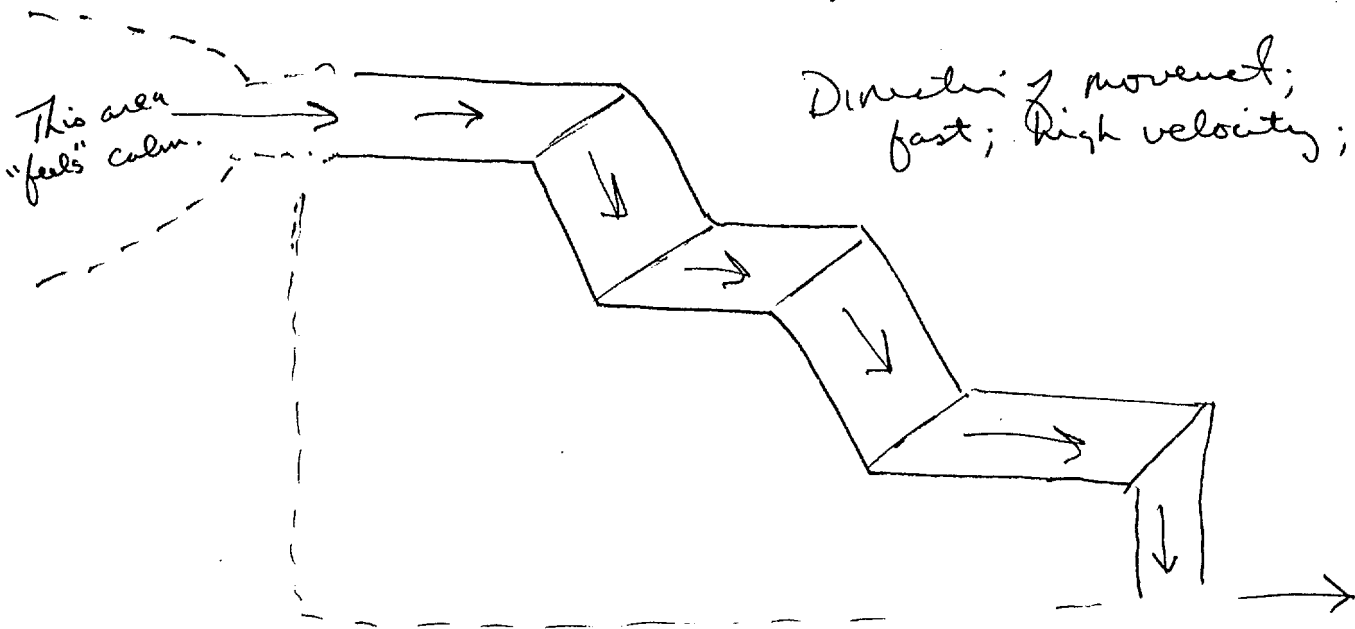


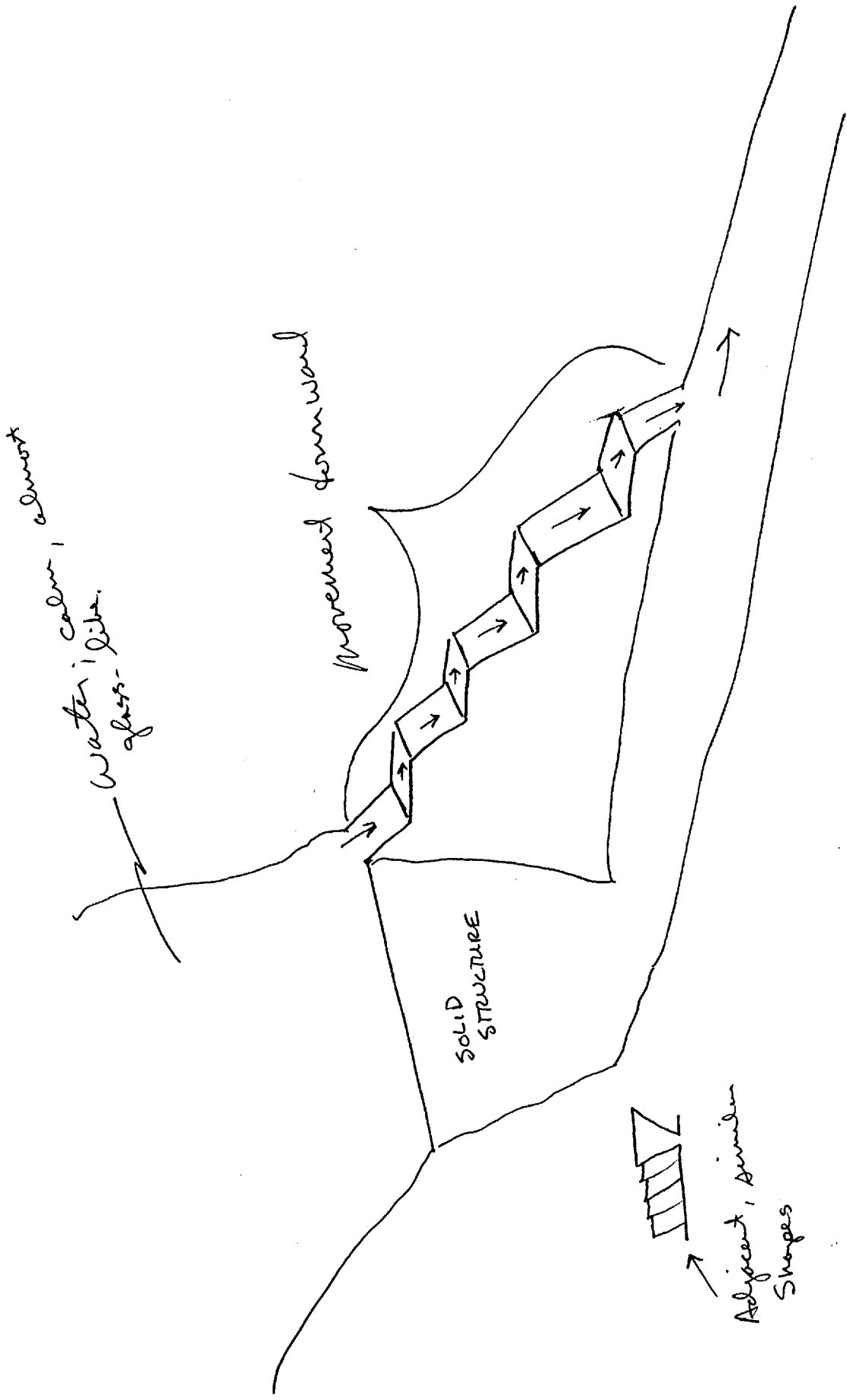
← Large door or doorway



Translucent gray, almost metallic, panel held by two wooden supports







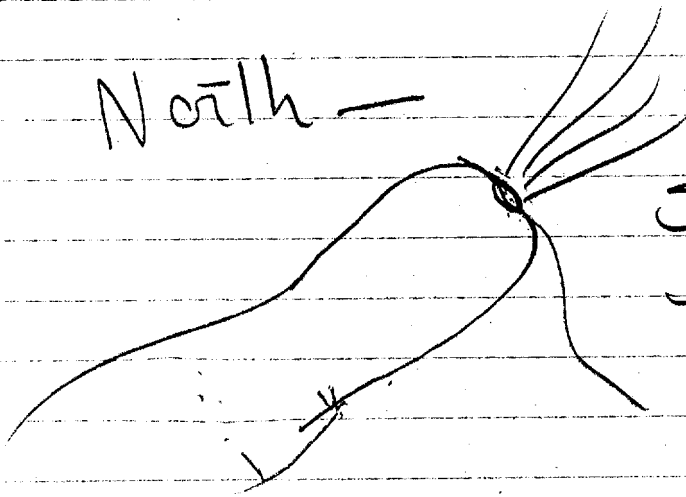
018

Friday

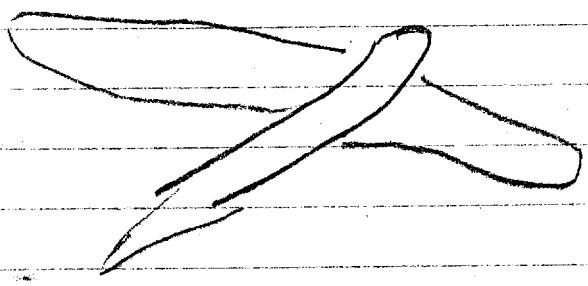
7

~~Blowing~~

North —



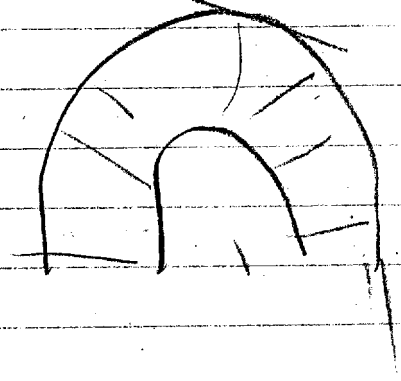
Something
blowing
out
hole.

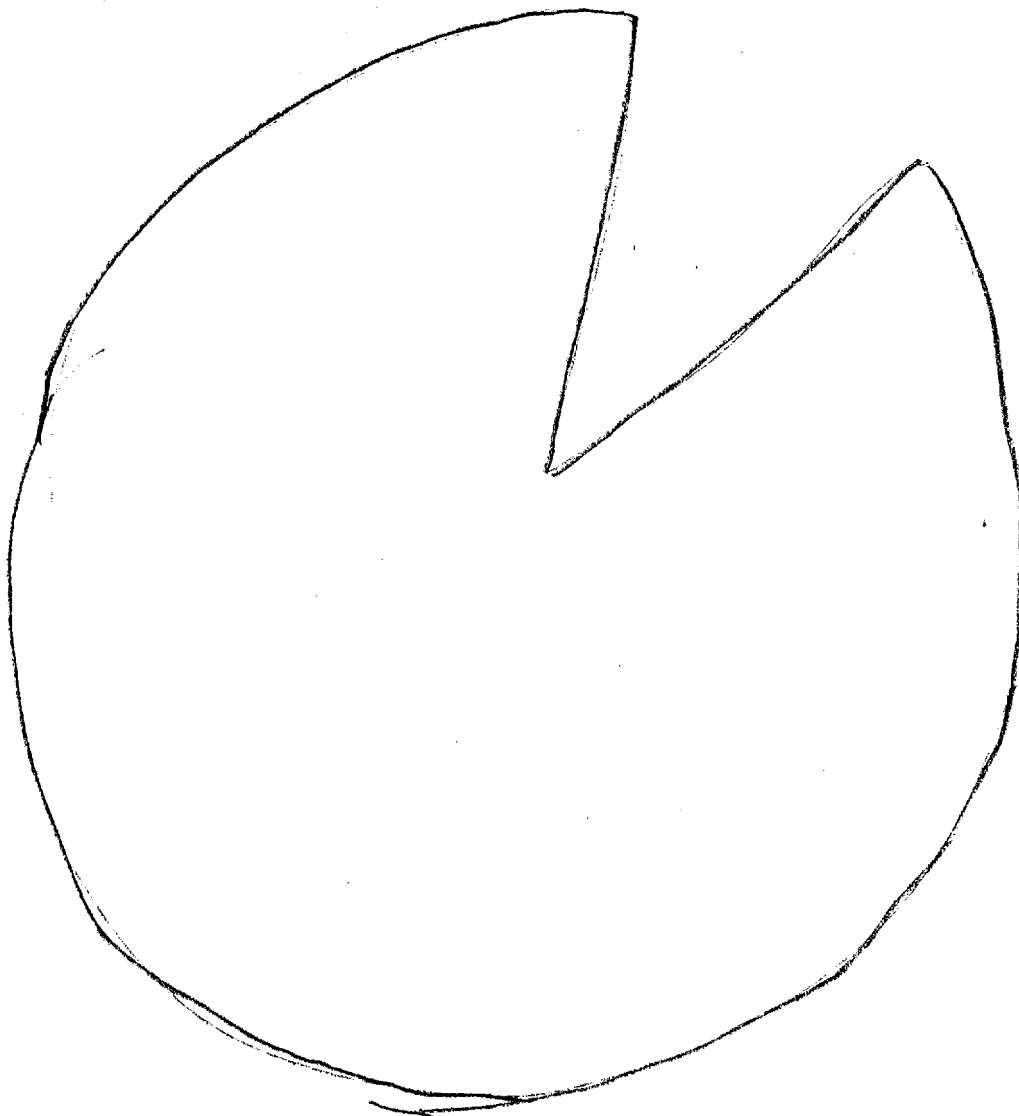


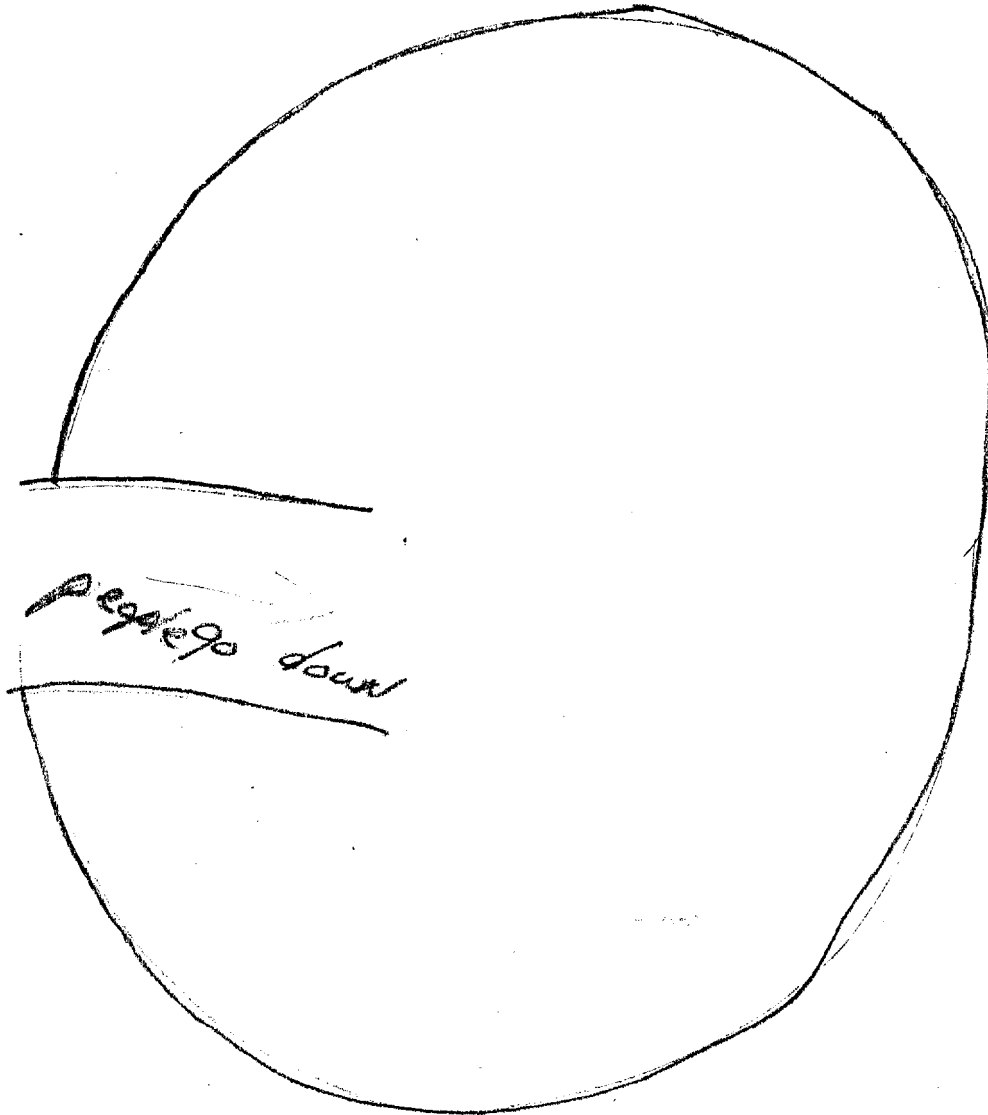
Tube Like

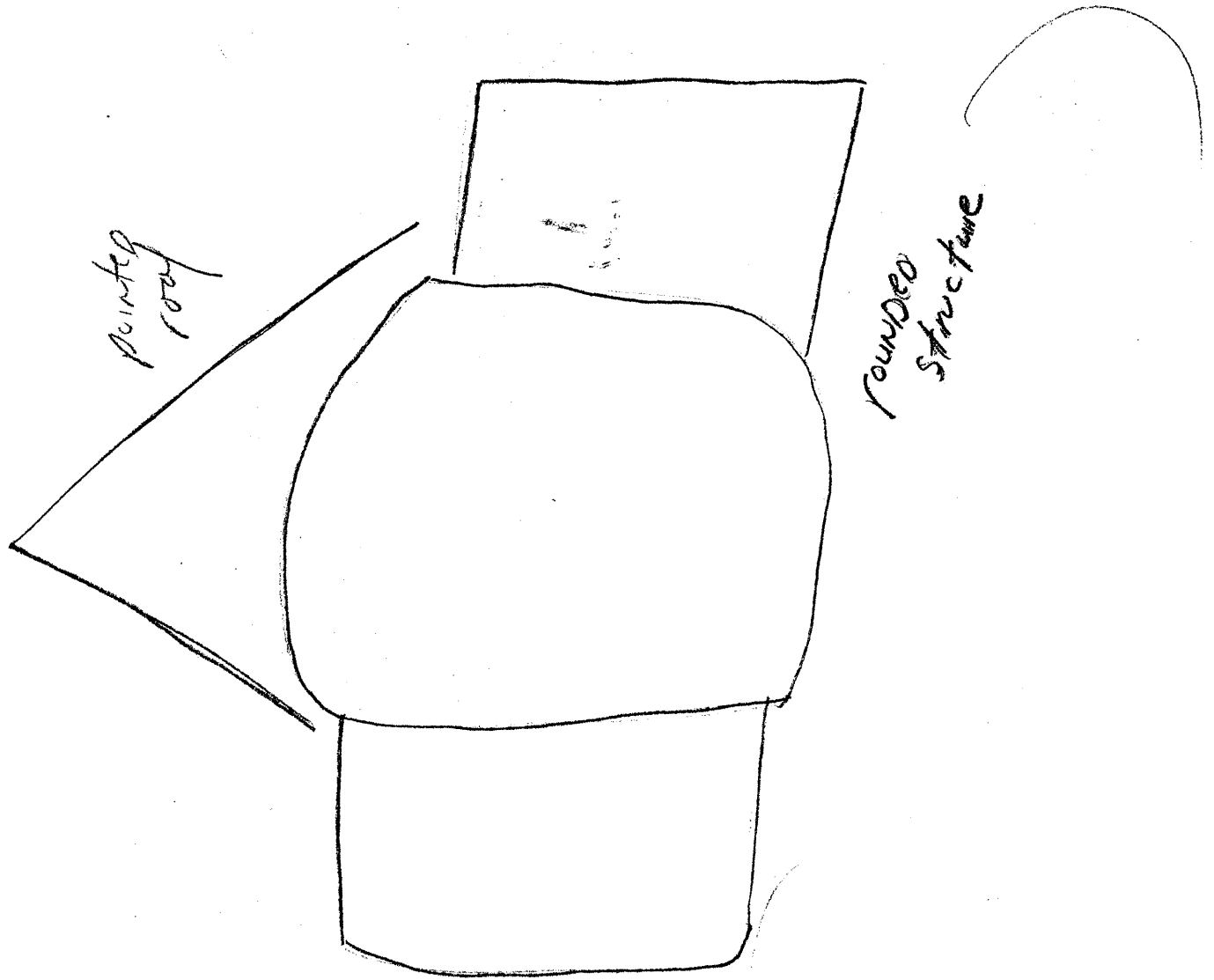


Tower
or Tall
Sort of
structure

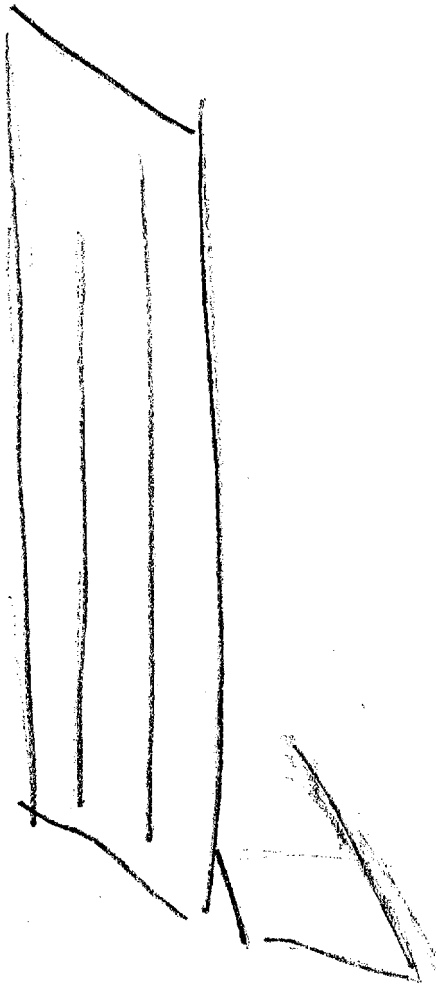


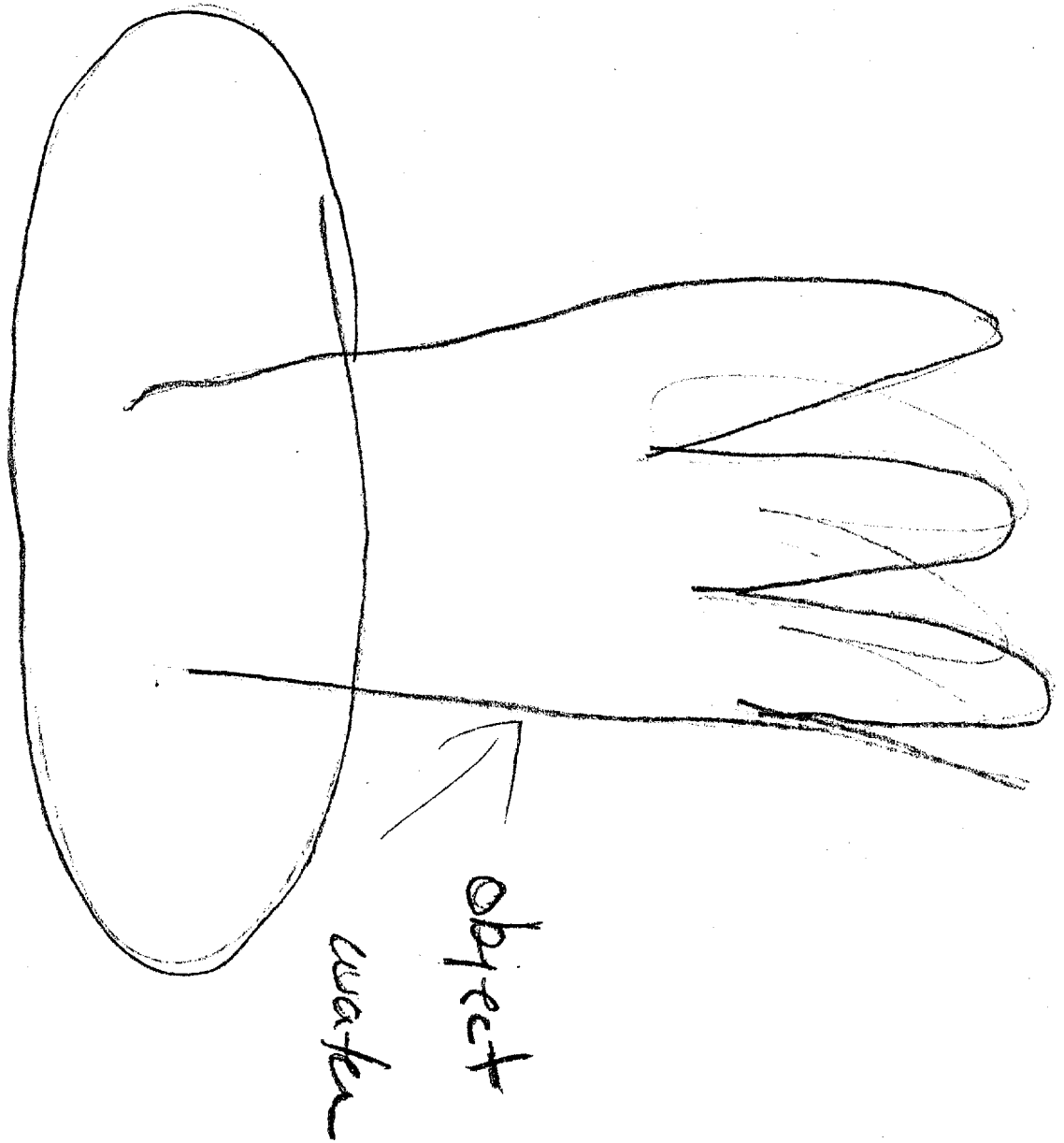


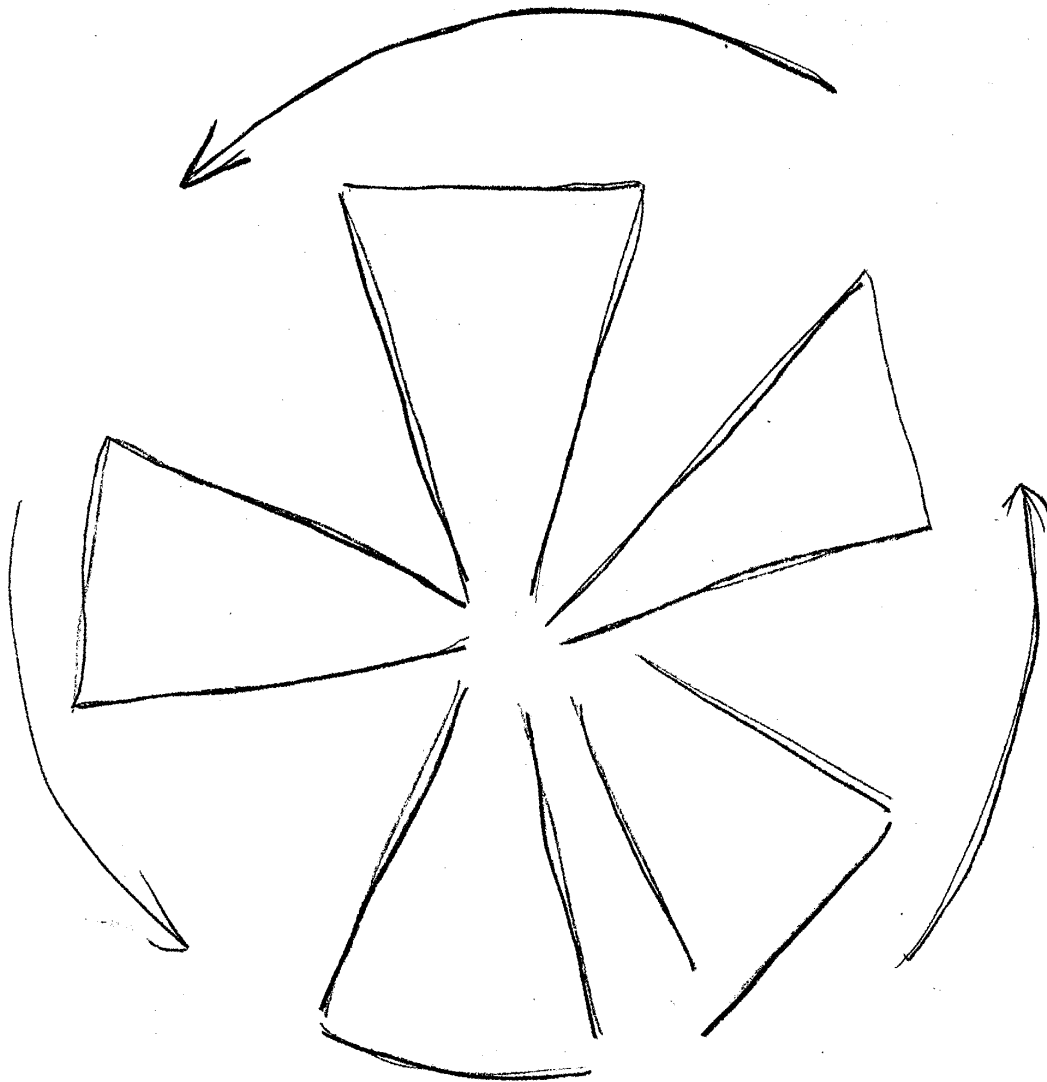




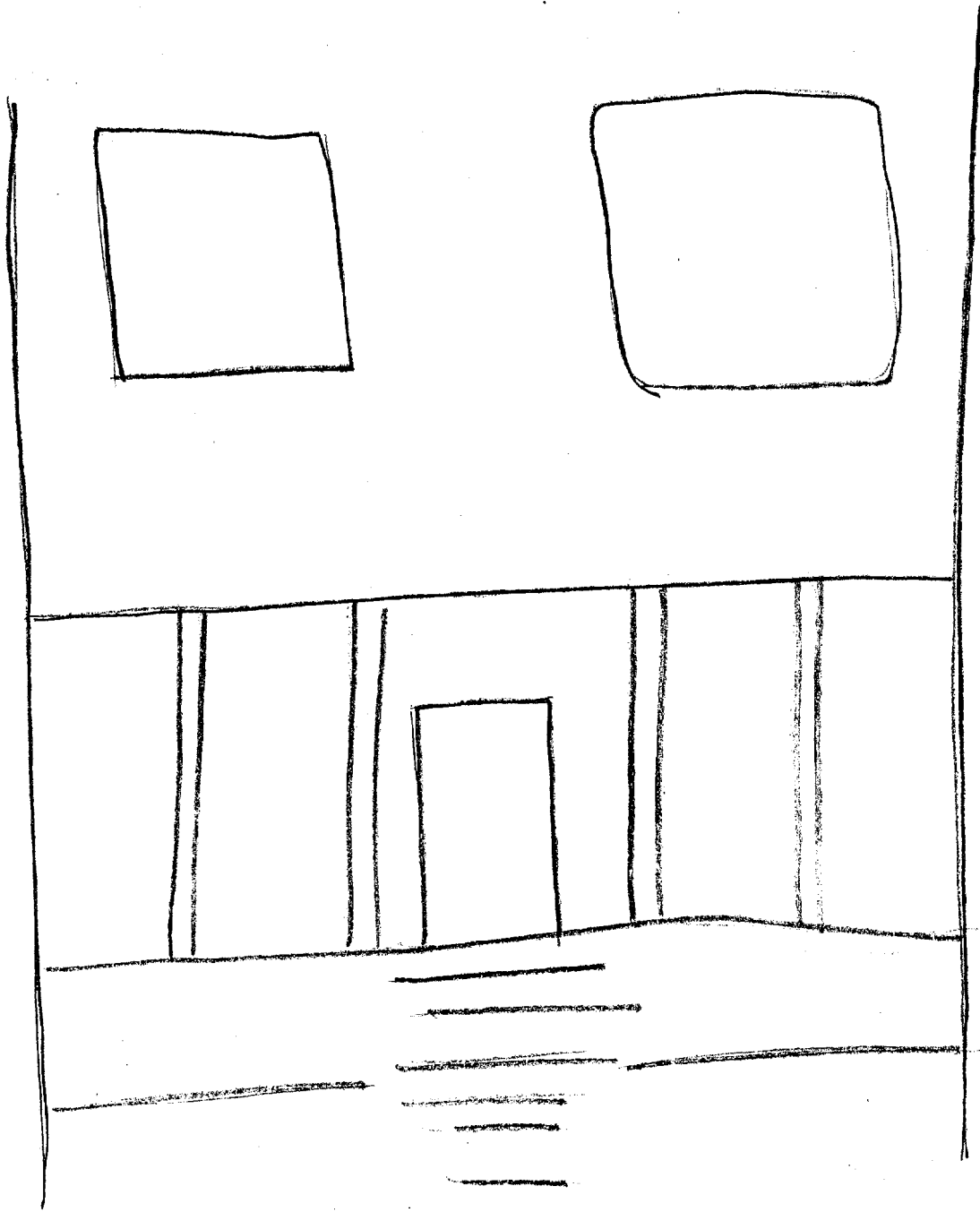
Vehicle
type
object



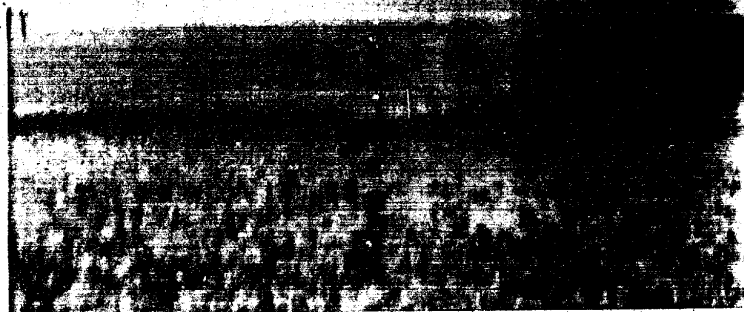




*Circular propeller shaped
object moving in motion.
Active*



White Structure



#2

