

~~SECRET~~

DATA SUMMARIES

(S/NF/SG/LIMDIS) Following are the perceived highlights from each source.

- (S/NF/SG/LIMDIS) Source A:

-- The target is a large progressive or modern structure. There may be stairs in the vicinity and this place has certain policies and procedures. There are some people at the site (men) in business apparel. Something is being watched or observed at this site and it appears to be a working environment. Someone is writing or jotting down notes. Communications are at the target site and plans may be made here. A theme or purpose for this structure appears to be new ideas, materials, or articles which are either produced or perhaps on display that may be considered a thought wave of the future. Some types of films or filming may be associated to possibly include tapes or sound tracks. There is a round object at the site and some sheets of metal. At one point, I perceived a green sign with the numbers 46 or 66 that is the size of a highway or interstate sign.

- (S/NF/SG/LIMDIS) Source B:

-- **VIEWER'S NOTE:** I had the overall sense of overlapping scenes resulting in a confusing collage of images and objects. It's as if the beacon was being inundated with drastically differing aspects of their surroundings. (see sketch a for advanced visual images prior to start of session).

-- There is a large block-shaped structure with several sections of differing heights (sketch b). The background is dark and reminiscent of either a thick stand of trees or a densely covered slope. This structure has a lot of windows.

-- There is a large flat surface that appears paved but it does not feel necessarily like a road or parking lot. It also has a sense of being "up in the air" or "suspended" above ground.

**REPRODUCTION REQUIRES
APPROVAL OF ORIGINATOR
OR HIGHER DOD AUTHORITY**

**FURTHER DISSEMINATION
ONLY AS DIRECTED BY DIA/PAG
OR HIGHER DOD AUTHORITY**

**CLASSIFIED BY MULTIPLE SOURCES
DECLASSIFY ON OADR**

1

~~SECRET~~

NOT RELEASABLE TO FOREIGN NATIONALS

~~SECRET~~

-- There are pieces of bent, convoluted metal bars reminiscent of the barrier posts within parking areas that have been run into by vehicles. Other metal bars nearby are painted yellow, reminiscent of a gate or other restrictive access device.

-- A large, dark bird is sitting to the right of either the target scene or the beacon person themselves; it is not afraid of humans and it's presence causes a chuckle or two.

-- There is a large, open grassy area reminiscent of a park setting. There is some sort of festivity nearby reminiscent of an annual picnic or cookout for an office or other group of associated people; it is a small group. There is a section of cyclone-like fencing nearby. It is only partial, like a half fence of the outfield or a back stop to a ball diamond. These are three of the aforementioned scenes (from the viewer's note) which feel as if they overlap onto the specific target.

- (S/NF/SG/LIMDIS) Source B: **OTHER PERCEPTIONS INCLUDE:**

-- Smoke or dust appears to bellow upwards in the distance; however, the depth perception is hard to get a handle on. It also resembles the smoke trail from a model rocket or the contrail of a jet.

-- There is an object with a lattice-like surface. However, the small squares are separated by raised ridges (like a waffle with sharp ridges).

-- The music from a radio within the vicinity of the beacon has been left on and is too loud.

-- There are several sections of a reflecting angled surface reminiscent of glass.

-- There are shapes reminiscent of the interior hull of unfinished boats(?).

-- There is a sense of moderately high cliffs overlooking water (like a river) nearby.

-- There is an association with transportation here; i.e. maybe shipping/receiving of material.

-- There is bubble-shaped glass which appears to come out of the ground with no associative indicators. Feels enigmatic.

~~SECRET~~

**NOT RELEASABLE TO FOREIGN NATIONALS
STAR GATE**

~~LIMDIS~~

~~SECRET~~

- (S/NF/SG/LIMDIS) Source C:

-- The site consisted of a large square tall structure. This structure stood very high and one cannot miss it. It looked as though it was light blue in color and it can be considered pretty. The structure reminded me of a "sky-scraper" with lots of windows. Overall, I felt that I was in a city or a large town environment however, this structure was isolated. I could sense people but I did not see the people.

-- Below the structure, the environment seemed natural. I could see a large rock and some natural features.

~~SECRET~~

NOT RELEASABLE TO FOREIGN NATIONALS
STAR GATE

LIMDIS

~~SECRET~~

(a)



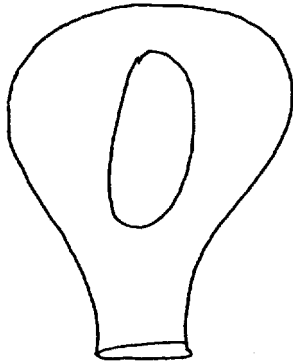
A/V sketch (Advanced Visual image prior to start of session).
* see pre-session hunches

(b)



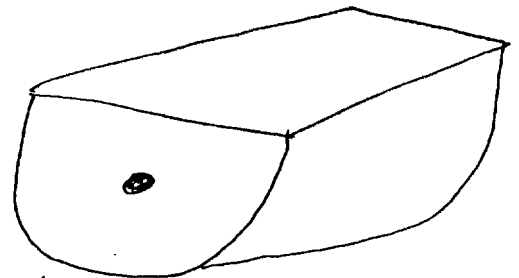
U/I curved surface(s)

(c)



U/I object which is close to beacon.

(d)



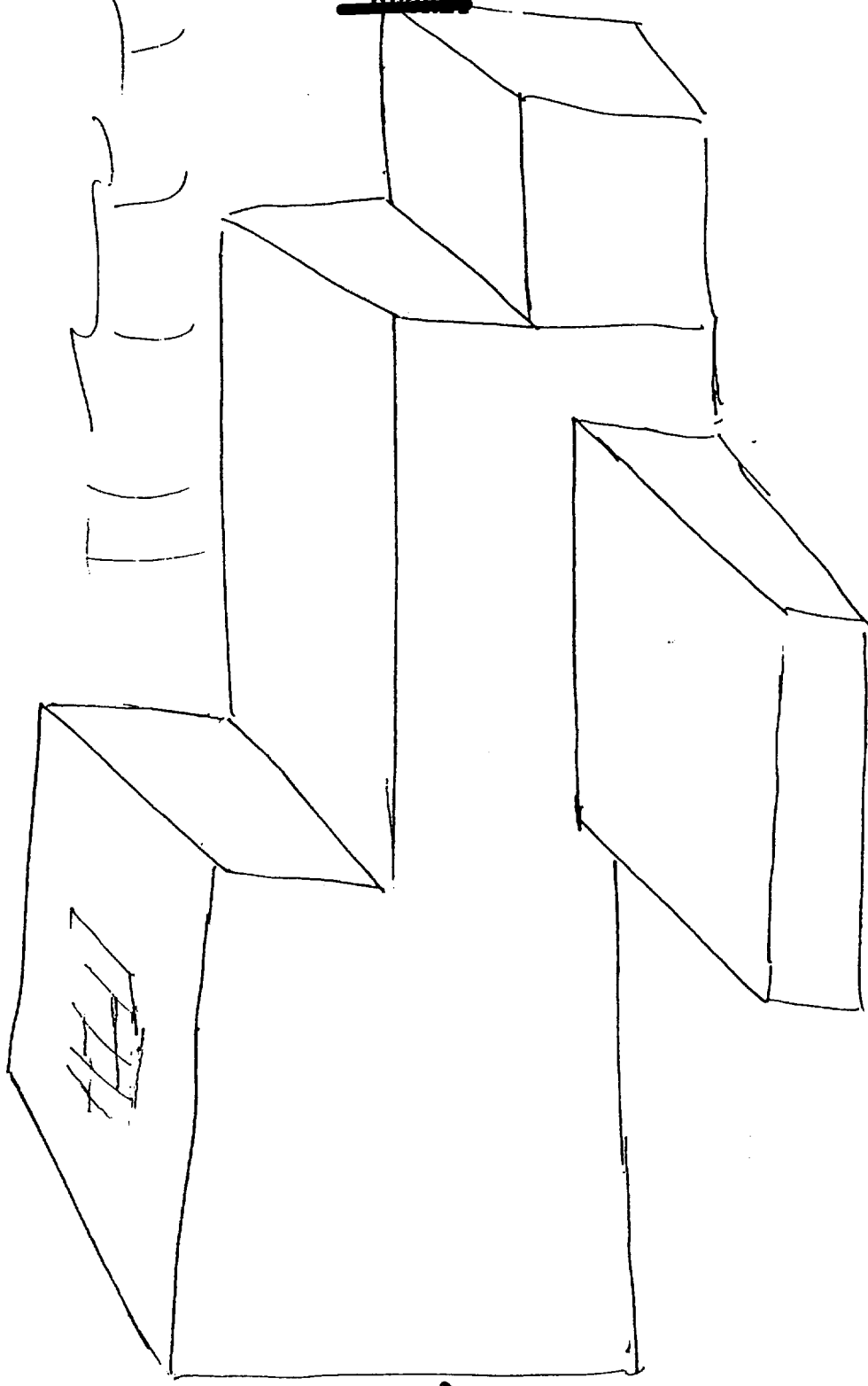
Hopper-like device

~~SECRET~~
NOT FOR
STAR GATE
LINDIS

(Source B)
Sketch a

~~SECRET~~

Dark here in background;
maybe trees or a vegetated
slope.



lots of windows

3-5 stories
↑

~~SECRET~~
NOFORN
STAR GATE
LIMDIS

(Source B)
Sketch b