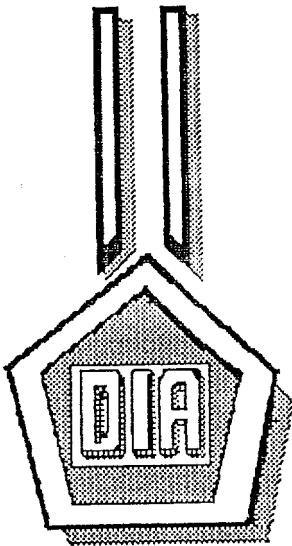


~~SECRET~~

DT-S- 1024-SL



DEFENSE
INTELLIGENCE
AGENCY

SUMMARY REPORT (U)

PROJECT 91007

23 January 1991

NOFORN

~~SECRET~~

Appendix A

PROJECT 91007

REPRODUCTION REQUIRES APPROVAL OF
ORIGINATOR OR HIGHER DOD AUTHORITY.
FURTHER DISSEMINATION ONLY AS DIRECTED
BY DT OR HIGHER DOD AUTHORITY.

23 JANUARY 1991

CLASSIFIED BY: DIA/DT
DECLASSIFY ON: OADR

PROJECT 91007

23 Jan 91

SUMMARY

1. (S/NF/LIMDIS) TARGETING DATA: A sealed envelope of the target site was provided to DT-S with task instructions attached. This sealed envelope was not opened and was returned to DT. The attached instructions were followed.

2. (U) TASK:

(S/NF/LIMDIS) Describe activities and purpose of target area; provide backup sketches.

3. (U) RESPONSES:

a. (U) SOURCE 049:

(1) (U) DATE OF INFORMATION (DOI): 23 Jan 91.

(2) (S/NF/LIMDIS) DATA SUMMARY:

- Site function is associated with unusual emanations and has numerous automatic functions:

o High technology diagnostics.

o Emanations may cause physical maladies (i.e., nausea, headaches).

o Flashes of blue are relevant.

- Object/equipment associations include:

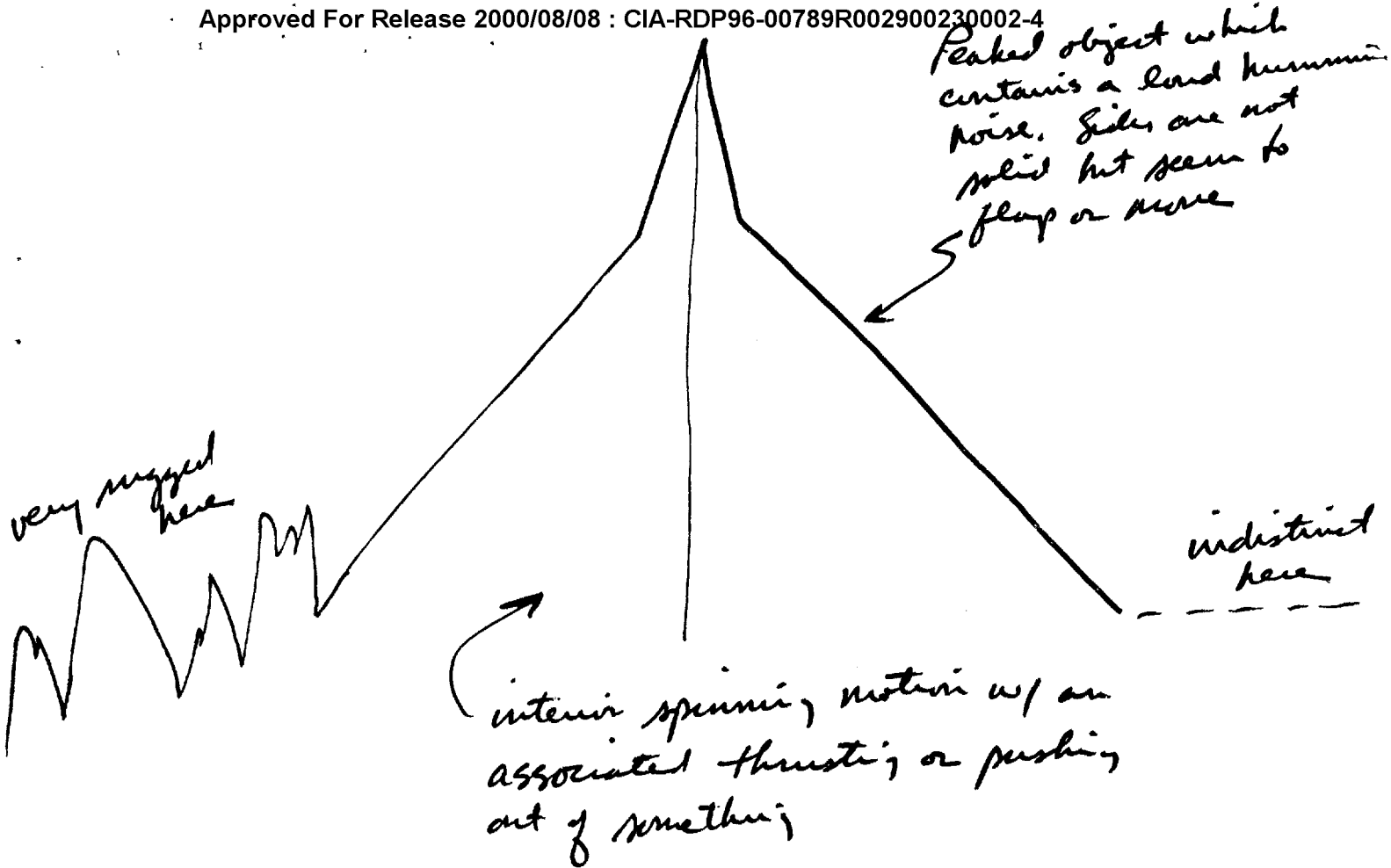
o Large pyramid or peaked shapes (FIG 1), with humming sounds and spinning motion.

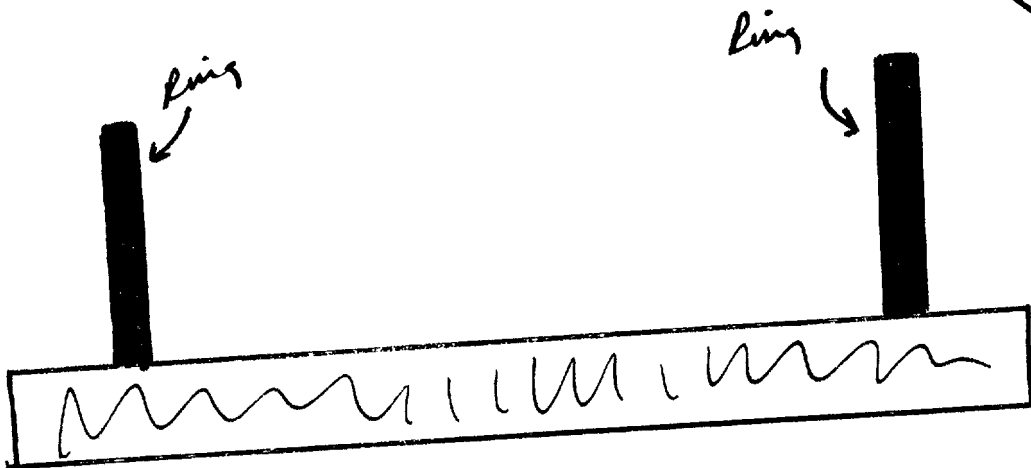
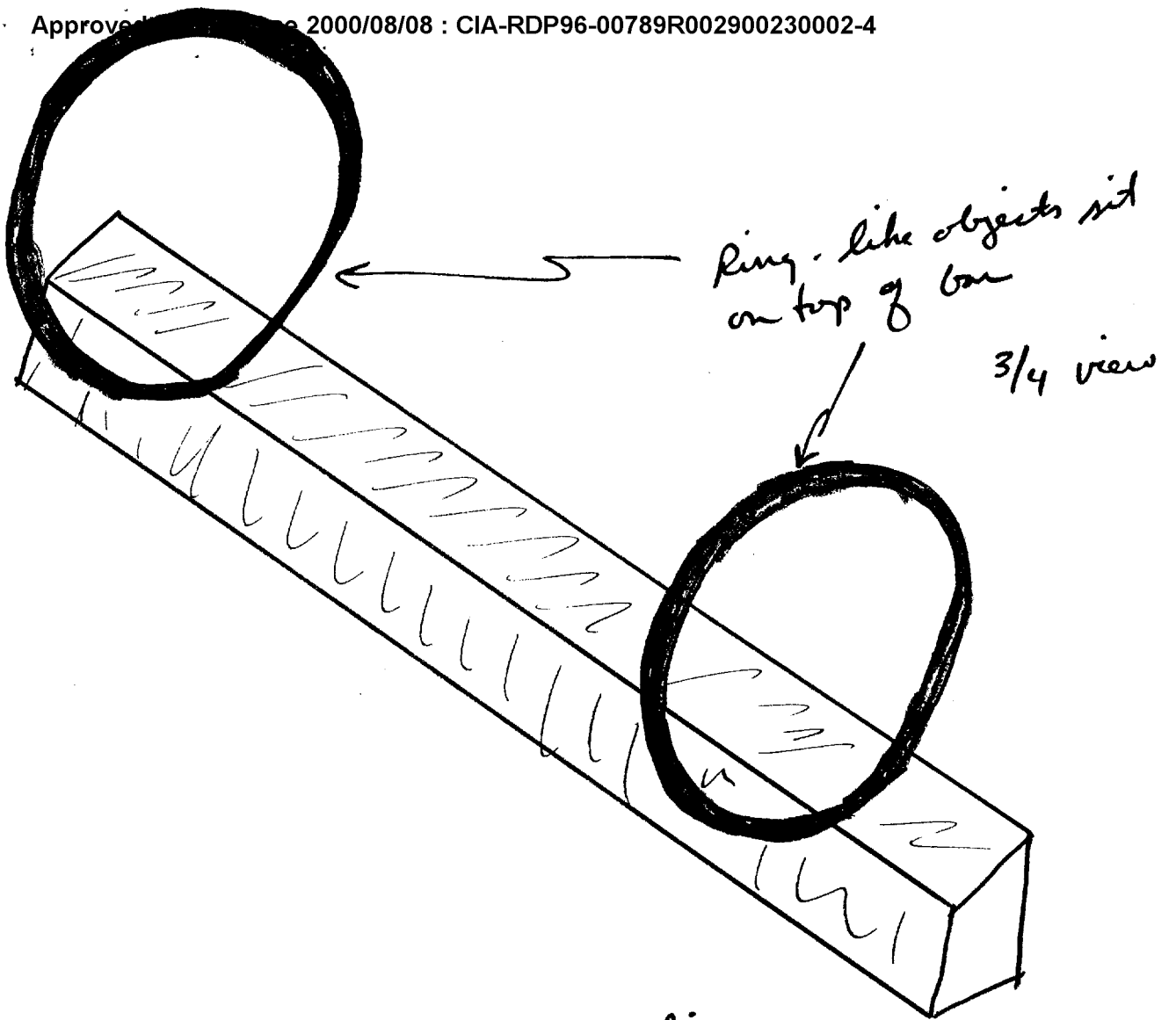
o May be flaps on the object.

o Bars and disks are also present, with rings (FIG 2).

o Many disarrayed thin elongated objects are present.

- Overall area is flat with features incorporated into very rugged terrain.





profile view

b. (U) SOURCE 052:

(1) (U) DOI: 23 Jan 91.

(2) (S/NF/LIMDIS) DATA SUMMARY:

- Function is associated with storage and loading, possibly with underground aspects:
 - o May have chemical munitions.
 - o Shaking and vibration motions are associated, with some circular motion.
 - o Ceiling may have a sliding/opening capability, and may be made of very thin metal.
- Main object(s) have missile-like shapes.
- Various smaller objects have fan type shapes (FIG 3).

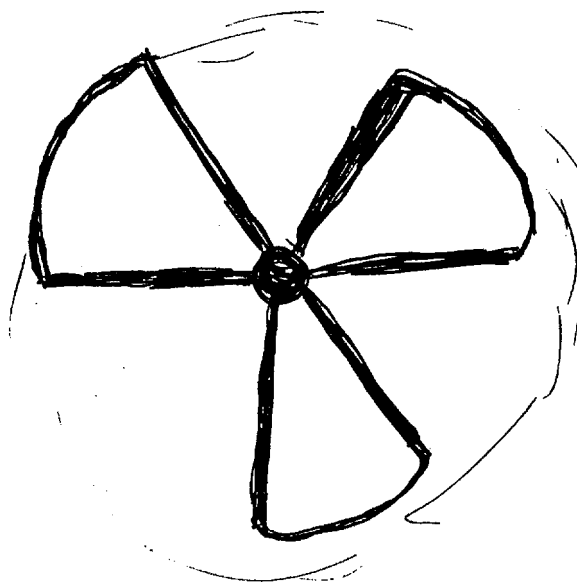
c. SOURCE 079:

(1) (U) DOI: 23 Jan 91

(2) (S/NF/LIMDIS) DATA SUMMARY:

- Main function seems to be related to mines:
 - o Possibly mine assembly, mine staging/deployment.
 - o Mines seem to be of a shallow surface type.
- Main site area is heavily dependent on a river or some type of water supply, though it is not near a river.
 - o Area may have a natural mining function or once was a mineral mine.
 - o Some association to "mile" or "nile".
 - o Area is in a Mid East country.

(Different aspect)
Rounded object
Shiny in middle
3-4 Blade-like shapes
Around it



4. (U) REMARKS:

a. (S/NF) Main sense of area is that it is remote, and may be involved in some sort of munitions storage/staging activity.

b. (U) This target can be reexamined to focus in on main aspects of interest.