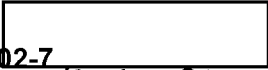


P.I.s -  
A.V.s - none



18 FEB 88

1533 HRS

(HIGGINS/PRESENT LOCATION)


SG1J

8809




f. across, angle up  
angle across, across  
current field

Structure


8808 

A. curving up, curving  
 reverse

8809 

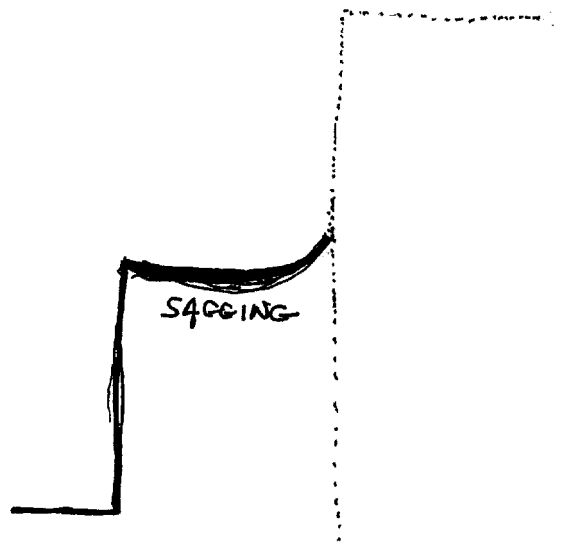
A. across, angle up, angle across  
 hard  
 B. structure

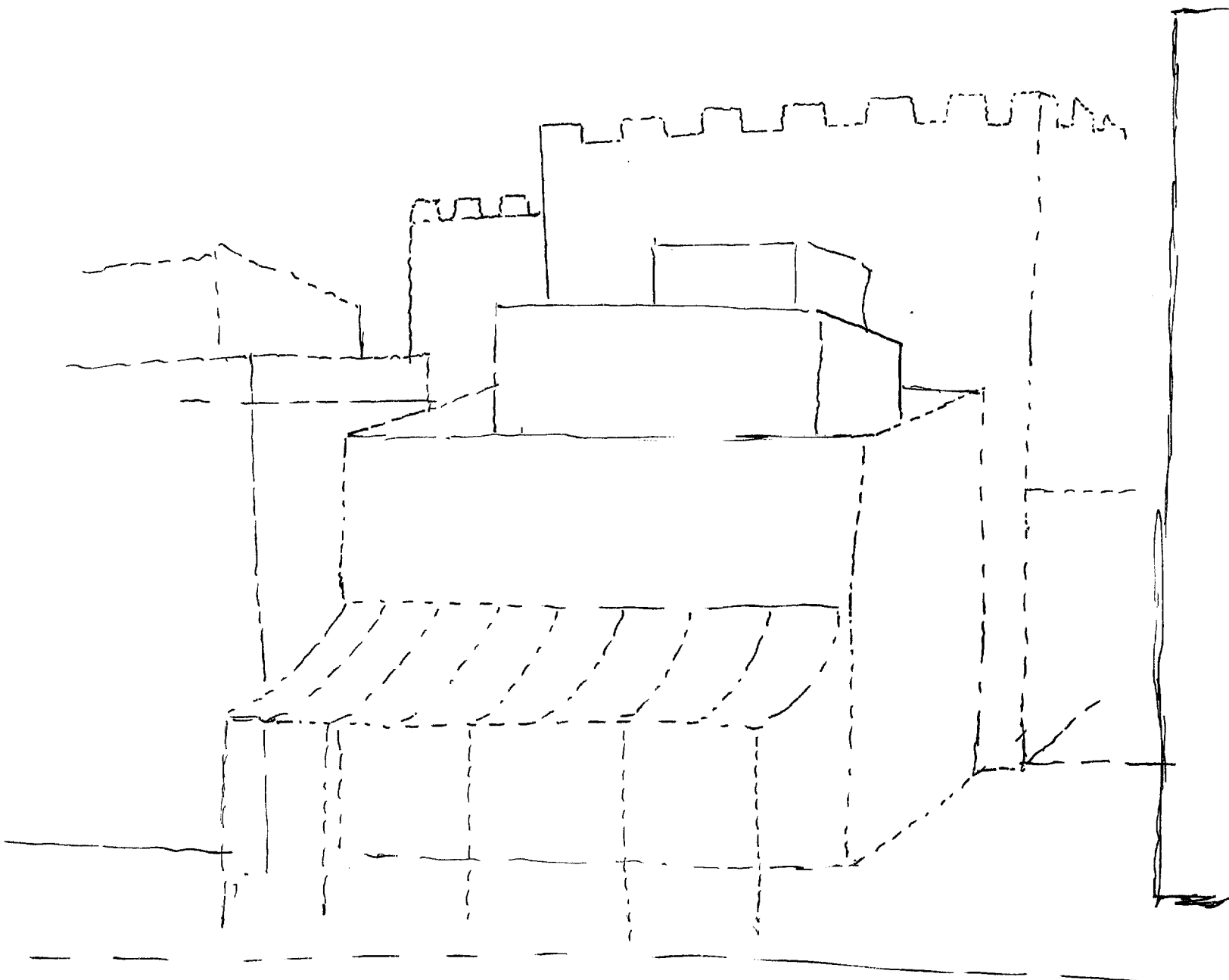
A. incline up, angle up,  
 angle across  
 hard  
 B. structure

8809 

A across, angle up,  
angle across  
hard  
B structure

S-2  
brown  
tan  
rough  
dusty  
dirty  
gentle  
angles  
rectangles  
arriving up

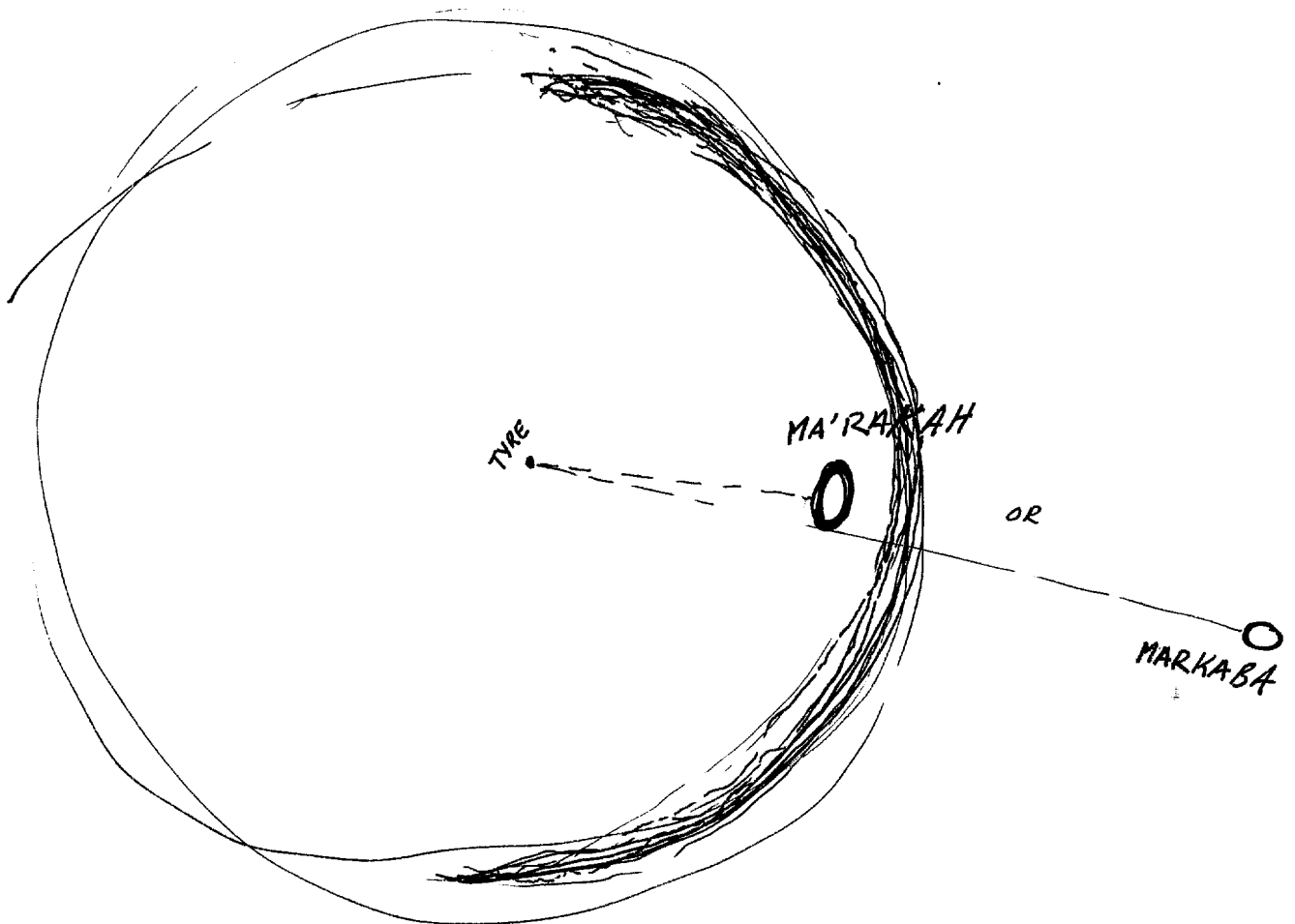




BAZARK  
FORTRESS  
CRUSADES CASTLE  
MUD BRICK

(Beaufort Castle?)

4 1/2 - a very old section of a town.... buildings are all connected and stacked together, side-by-side and on top of each other... old decaying crumbling brickwork. A large fortress like structure in the background. Hardly any windows in the structures. Feeling of being crowded. Like a bazaar



*4<sup>1</sup>/<sub>2</sub> - feel that he is not very far from Tyre at this time. I feel very strongly that his present location is MA'RAKAH!*

*1630HRS*