



The Wishing

Well in Luray Caverns has produced more than two million coins having a value in excess of \$200,000 during recent years. The proceeds are given to national health organizations. This is one of the numerous photographic opportunities in Luray Caverns.

Open Every Day In The Year

Hours of Admission. Luray Caverns is open every day, including Sunday, all year. Guided tours of one or more persons are admitted to the Caverns about every 20 minutes.

	Luray Caverns		Car & Carriage Caravan
	First Tour	Last Tour	
March 15-June 14	9:00 a.m.	6:00 p.m.	Open 10:00 a.m.
June 15-Labor Day	9:00 a.m.	7:00 p.m.	Closes 1 1/2 hours after last cave tour
Labor Day-Nov. 14	9:00 a.m.	6:00 p.m.	
Nov. 15-March 14	9:00 a.m.	4:00 p.m.	
Sat.-Sun.	9:00 a.m.	5:00 p.m.	

Hours and rates of admission subject to change without notice. For additional information, phone 703/743-6551 or write Luray Caverns, Box 748, Luray, Va. 22835.

VA. MAP INSIDE!

VIRGINIA'S LURAY CAVERNS

NEAR SKYLINE DRIVE

VA. MAP INSIDE!

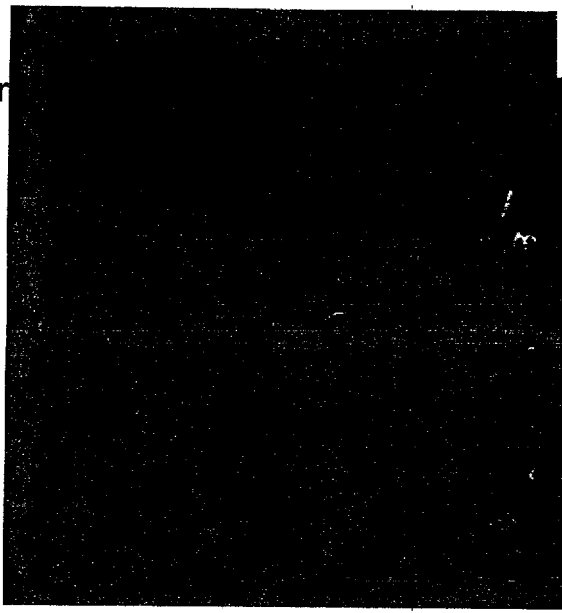
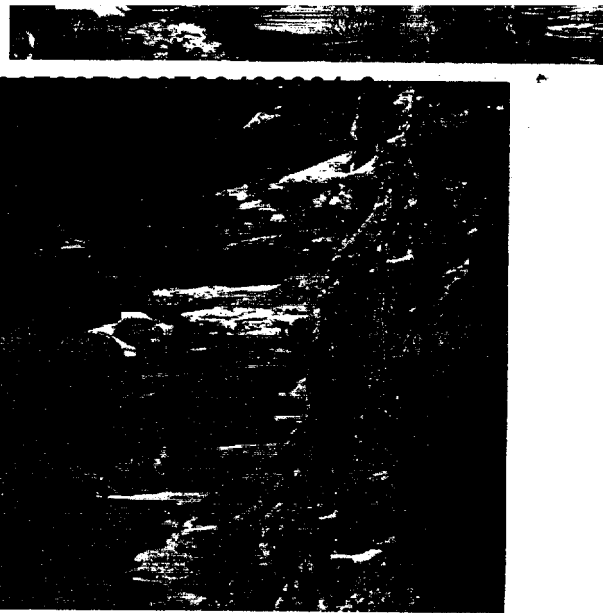
VIRGINIA'S LURAY CAVERNS

NEAR SKYLINE DRIVE

LARGEST AND MOST POPULAR

OPEN EVERY DAY

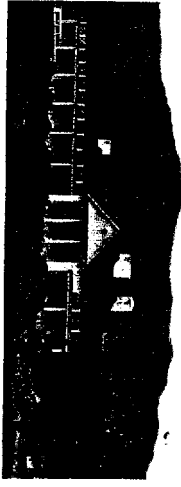
Approved F



of formations and variety of natural colors and wonderland are unsurpassed. Monumental columns in rooms with ceilings in 140 feet high—shimmering draperies ring, glistening stone, beautiful cascades of clear pools. You will be fascinated by unique stalactites as those resembling "fried eggs" lie up. Be certain to bring your camera to savor the awe-inspiring grandeur of the world's most popular cavern in eastern America.



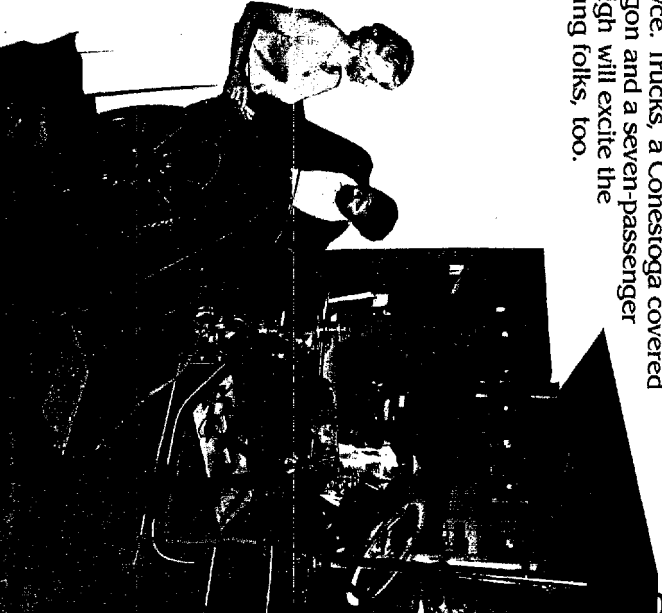
LURAY TRAVEL CENTER OF THE HONORABLE SHENANDOAH VALLEY provides all travel services including fine dining, lodging and campgrounds. There's also boating and fishing on the fabled Shenandoah River. Nearby are historic sights and only 10 minutes to the East is the Central Entrance to Shenandoah National Park and Skyline Drive. From I-81 the park's highest elevations and major visitor services are most accessible via Exit 67 and U.S. 211 East. **LURAY CAVENES** offers complete travel facilities including a restaurant, gift and specialty shops and two motels (703/743-4531 or 743-4536) with swimming pools and magnificent mountain views. **COUNTRY CLUB RESORT** features a scenic 18 hole golf course, tennis and attractive Golf/Tennis Vacation Package Plans (703/743-6551—9 a.m.—5 p.m., daily). **LURAY CAVENES AIRPORT** with a 3500' paved, lighted runway has complete fly-in facilities and courtesy transportation to all caverns properties.



THE HISTORIC CAR AND CARRIAGE OPERATING The history of transportation unfolds in the Historic Car and Carriage Caravan at Luray Caverns. This outstanding exhibit features a collection of antique cars, carriages, coaches and costumes dating from 1625. A prize in the collection of authentically restored vehicles is the 1892 Benz, one of the oldest cars in the country still in operating condition. You'll also see a 1908 Baker Electric, a 1911 Hupmobile, a 1915 Stanley Steamer—and Rudolph Valentino's 1925 Rolls Royce. Trucks, a Conestoga covered wagon and a seven-passenger sleigh will excite the young folks, too.



LURAY SITTING TOWER. A carillon of 47 bells, the largest bell weighing 7640 pounds; the smallest 12 1/2 pounds. Reclats are given for a 45 minute period Tues., Thurs., Sat., Sun., June, July and August. Weekends only Mar., Apr., May, Sept., Oct. Carillonneur, David Breneman



Discover Another World



Lowered into the earth on the end of a rope, Andrew Campbell and Benton Stebbins followed winding passageways from one gigantic room to the next. Even in the flickering candlelight, they knew they had made a spectacular discovery.

The soaring cavern walls reflected every color of the rainbow. The light from their candles danced over the surface of crystal-clear pools. And every way they turned, there were formations more breathtaking than the last. Since that August day in 1878, visitors by the millions have made Luray Caverns the most popular cave in the East, a world of magic and majesty still as "Marvelously Beautiful" as it was in newspaper headlines over a century ago.

During the one hour conducted tour, taken over comfortable paved walkways, you will be astonished at the variety of formations and be absolutely amazed when you "hear rocks sing" on the world's only Stalacpipe Organ.

STALACPIPES ARE ONLY THE BEGINNING. After the caverns' tour you can explore the romantic history of transportation at the Historic Car and Carriage Caravan. Then relax and browse through gift and specialty shops or just admire the beauty of the surroundings.

A VACATION EXPERIENCE YOU WILL REMEMBER. When getting your vacation's worth means something exciting and different, there's nothing on earth like Luray Caverns and there's never a better time to discover this REGISTERED NATURAL LANDMARK than this year.

THE GREAT STALACPIPE ORGAN

The world's only Stalacpipe Organ is a many-acre symphony of sight and sound. The inventor, Ieland W. Sprinkle, combined Man's genius and the Hand of God when he created this unusual and fascinating musical instrument. Stalacpites tuned to concert pitch and accuracy are struck by electronically controlled rubber-tipped plungers to produce music of symphonic quality. . . you must see and hear this amazing instrument to appreciate it.

Plunger Striking Stalacpipe

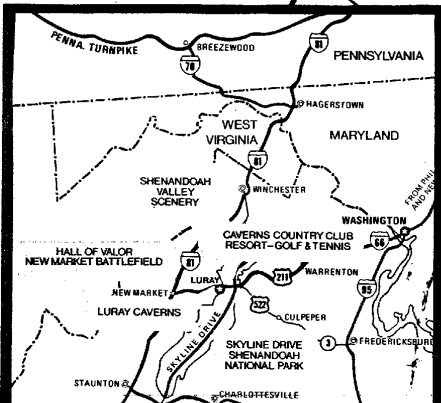


For R
 The
 plus
 in
 this
 Discover
 more
 and
 format
 sunny-
 the me
 largest

92R00076000000



MAP KEY
 ARROWS INDICATE
 NEAREST INTERSTATE EXIT TO
 LURAY CAVERNS
 ▲ TRAVEL INFORMATION STATION



MILEAGE TO LURAY CAVERNS FROM

SKYLINE DRIVE, VA	9	NEW ORLEANS, LA	1063
INTERSTATE 81	13	NEW YORK CITY, NY	329
BALTIMORE, MD	131	PHILADELPHIA, PA	226
BREEZEWOOD, PA	114	PITTSBURGH, PA	245
CHARLOTTE, NC	306	RICHMOND, VA	126
CHARLOTTESVILLE, VA	63	ROANOKE, VA	139
FREDERICKSBURG, VA	70	VIRGINIA BEACH, VA	236
GETTYSBURG, PA	119	WASHINGTON, DC	89
HARRISBURG, PA	167	WILLIAMSBURG, VA	177

- MEMBERS OF SOUTHERN HIGHLANDS ATTRACTIONS**
- Biltmore House
 - Blowing Rock
 - Chimney Rock
 - Christus Gardens
 - Folk Art Center
 - Gatlinburg Sky Lift
 - Grandfather Mountain
 - Incline Railway
 - Lost Sea
 - Luray Caverns
 - Natural Bridge
 - New Market Battlefield
 - Oconalufee Indian Village
 - Rock City
 - Rocky Mount
 - Ruby Falls
 - Tweetsie Railroad
 - Unto These Hills
 - Old Salem

